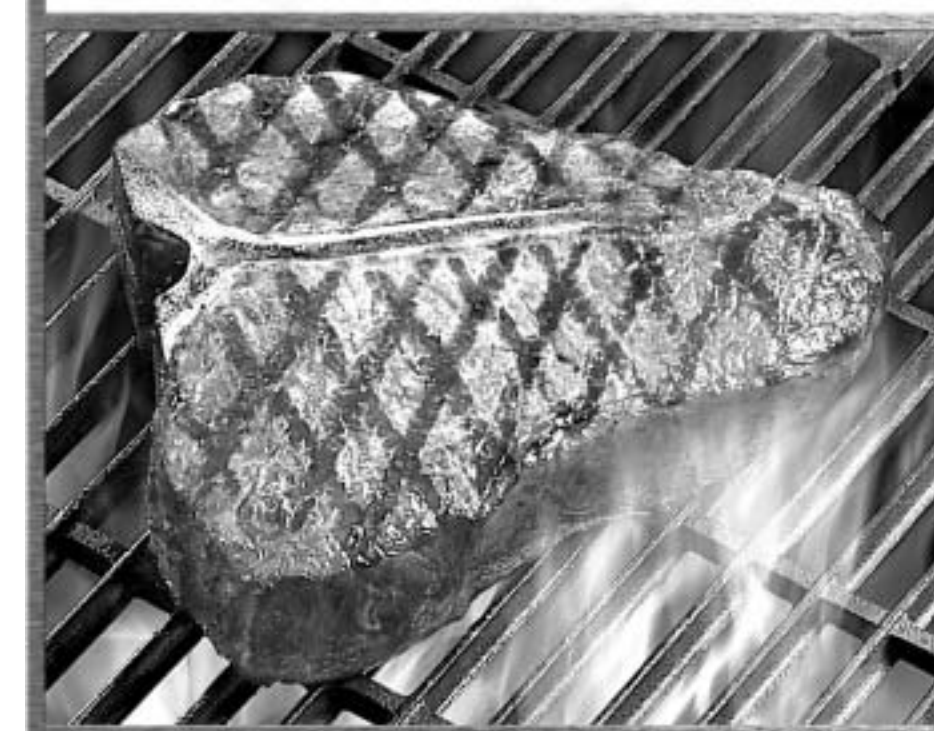
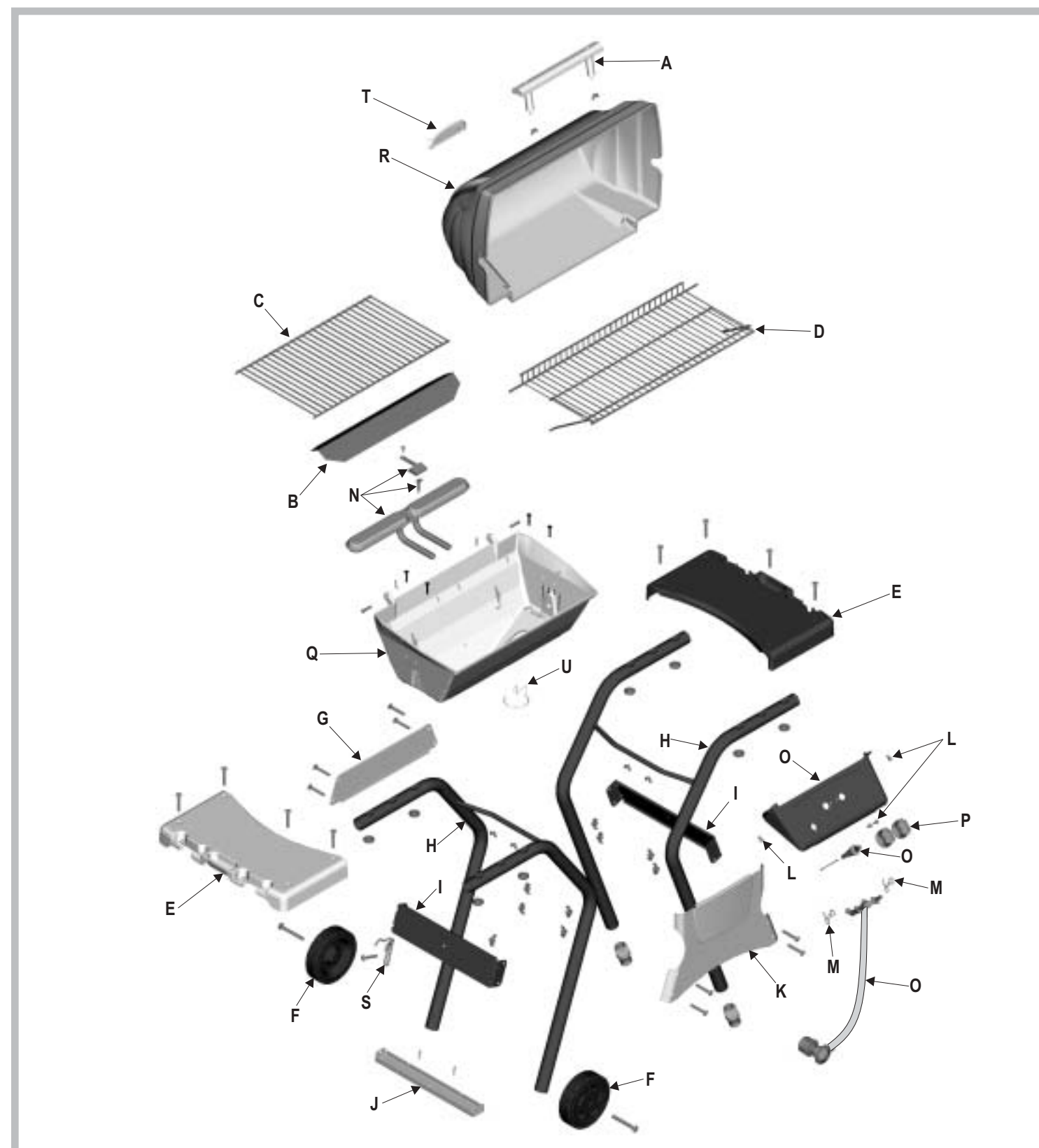


Parts List - Model 461633803

Key	Qty.	Description	Part #	Key	Qty.	Description	Part#
A	1	Handle	4090009	1	Hardware Bag, Cart	4254046	
B	1	Vaporiser Bar	4151038	1	Hardware Bag, Shelves	4254005	
C	1	Cooking Grate	4152738		Replacement Ignition Module Bag	4506709	
D	1	Warming Rack	4152866				
E	2	Side Shelf	4154279				
F	2	Wheel	4154569				
G	1	Back Support Brace	4500251				
H	2	Leg Assembly	4502376				
I	2	Side Support Brace	4502373				
J	1	Tank Support Bracket	4502093				
K	1	Front Panel	4502118				
L	4	#10x1/2", T-20, Self-Tap Screw	4080043				
M	2	Valve Clip	4156172				
N	1	Burner/Collector Assembly	4505081				
O	1	Control Panel Assembly	4530075				
P	2	Control Knob	4154470				
Q	1	Grill Bottom	4580422				
R	1	Grill Lid	4581018				
S	1	Tank Retainer Wire	4151018				
T	1	Logo Plate	4157144				
U	1	Grease Clip	5156607				

Optional Assembly Hardware
We realize some customers prefer to use tools. **Optional hex nuts** have been provided for you to use.



461633803 / 0-4165165 (10-28-02)

12000

461633803
ASSEMBLY MANUAL



THIS GRILL IS FOR OUTDOOR USE ONLY

CAUTION: Read and follow all safety statements, assembly instructions, and use and care directions before attempting to assemble and cook.

INSTALLER/ASSEMBLER: Leave these instructions with consumer.

CONSUMER: Keep this manual for future reference.

WARNING
Failure to follow all manufacturer's instructions could result in serious personal injury and/or property damage.

CAUTION
Some parts may contain sharp edges – especially as noted in the manual! Wear protective gloves if necessary.

If you have any questions or need assistance during assembly, please call **1-800-241-7548**.

THERMOS

1 **Parts to assemble:**
 2 Leg Assembly
 1 Front Panel
 2 Side Support Brace
 4 Carriage Bolt, 2"
 4 Plastic Tee Knob

A. Lay leg assemblies on their sides.
 B. Place front panel on legs.
 C. Braces attach to inside of legs.
 D. Secure with carriage bolts and tee knobs.

Front Panel
 Leg Assembly
 Side Support Brace

Qty. 4
 Qty. 4

NOTE: To prevent scratching, lay grill on packing material to assemble.

2 **Parts to assemble:**
 1 Back Support Brace
 4 Carriage Bolt, 2"
 4 Plastic Tee Knob

A. Turn assembly upside-down
 B. Secure back brace and side braces to legs with carriage bolts and tee knobs.

Back Support Brace
 Side braces on inside of legs.

Qty. 4
 Qty. 4

3 **Parts to assemble:**
 1 Tank Support Bracket
 2 Wheel
 2 Axle Bolt
 2 Hitch Pin
 2 Leg Extender

A. Insert axle bolts through wheels, left legs and bracket. Bracket fits inside legs.
 B. Secure with hitch pins in ends of axle bolts.
 C. Push leg extenders into right legs.

Wheel
 Leg Extender
 Tank Support Bracket

Qty. 2
 Qty. 2

4 **Parts to assemble:**
 1 Grill Bottom Assembly
 4 Carriage Bolt, 1/2"
 4 Metal Wing Nut

A. Stand cart upright.
 B. Make sure ignitor wire is connected to ignitor.
 C. Place grill bottom onto supports. Control panel overlaps front panel.
 D. Secure with carriage bolts and wing nuts.

Grill Bottom
 Ignitor Wire
 Control Panel

Qty. 4
 Qty. 4

5 **Parts to assemble:**
 1 Vaporiser Bar
 1 Cooking Grate

A. Place vaporiser bar onto the two inner support ridges at each end of grill bottom. Bar should rest between the outer support ridges. See inset below.
 B. Place cooking grate onto grill bottom.

Cooking Grate
 Vaporiser Bar
 Outer Support Ridge

NOTE: Ceramic briquets are not required.

6 **Parts to assemble:**
 2 Side Shelf
 8 Carriage Bolt, 2"
 8 Crown Fasteners

A. Place shelves onto legs (curved edge inward).
 B. Secure with carriage bolts and crown fasteners.

Side Shelf
 Curved Edge

Qty. 8
 Qty. 8

7 **Parts to assemble:**
 1 Grill Lid
 1 Handle Assembly
 2 Metal Wing Nut
 2 Hinge Pin
 2 Hitch Pin
 1 Logo Plate

A. Attach lid to grill bottom with hinge and hitch pins.
 B. Attach handle assembly to lid with two metal wing nuts.
 C. Snap logo plate into grill lid.

Handle Assembly
 Grill Lid (Lid style may vary.)

Qty. 2
 Qty. 2
 Qty. 2

8 **Parts to assemble:**
 1 Warming Rack

A. Slide rear pivot wire of warming rack into holes in grill lid.
 B. Insert leg wires into top hole of three-hole pattern in side of grill bottom.

Note: Wires at rear of warming rack should point upward.

Warming Rack

9 **Parts to assemble:**
 1 Tank Retainer Wire
 1 Carriage Bolt, 1/2"
 1 Plastic Tee Knob

A. Attach retainer wire to left side brace with carriage bolt and tee knob. Leave loose.

Tank Retainer Wire

Qty. 1
 Qty. 1

10 **Parts to assemble:**
 1 LP Gas Tank

LP tank is sold separately. Fill and leak check before attaching to grill and regulator.

A. Center LP tank on support bracket with collar opening to front.
 B. Slide retainer over tank collar and tighten tee knob.

Tank Collar
 LP Gas Tank

CAUTION
 Tank collar opening must face to front of cart once tank is attached.
 Failure to install tank correctly may allow gas hose to be damaged in operation, resulting in the risk of fire.

See Use & Care manual to perform the "Burner Flame Check" and for important safety instructions before using.

11 **Parts to assemble:**
 1 Grease Clip

A. Hang grease clip beneath grill bottom.
 B. Hang an empty soup can (not included) from grease clip.

Rear view of grill.
 Grease Clip

CAUTION
 Failure to install cup in clip will cause hot grease to drip from bottom of grill with risk of fire or property damage.