

INTRODUCTION

• LOBB Power Humidifiers are the most versatile, "common sense" designed humidifiers on the market today. They offer you, the homeowner, the most trouble-free, high capacity power humidifiers yet built. Based on the proven high efficiency of the rotating drum principle, these units deliver controlled pure water vapor into the home up to 18 gallons per day.

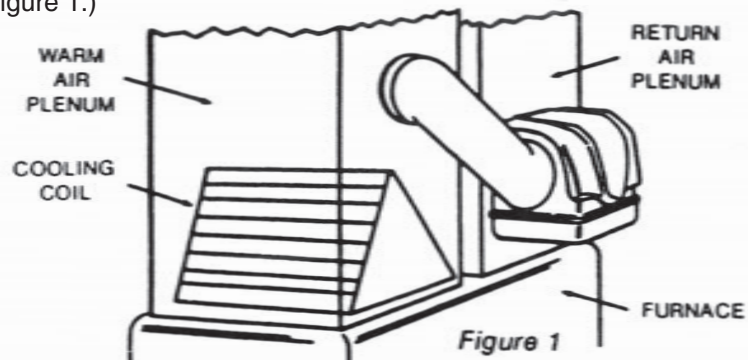
• **OPERATING PRINCIPLE:** Evaporation takes place as the heated air from your furnace passes through the moisture laden evaporative pad. This pad, is wetted as it slowly rotates in a float controlled level of water. The moistened warm air is then passed on into the duct system.

• The operating principle is exactly the same on all LOBB Power Humidifier models. Your LOBB Humidifier housing is manufactured of the highest quality non-corrosive, easily cleaned fiberglass. All component parts, except pad and pan liner are warranted for two years.

• Given the necessary maintenance, your LOBB Humidifier will provide many years of trouble-free performance and the comfort of adequate and controlled indoor relative humidity. Carefully read the instructions enclosed in the Homeowners Manual on caring for your new LOBB Power Humidifier.

INSTALLATION INSTRUCTIONS FOR MODELS WA-2700 & WA-1700 POWER HUMIDIFIERS

1. Both Models WA-2700 and WA-1700 are designed to allow mounting on either the warm air plenum of the return air plenum. Select a location on either plenum that will allow easy access for cleaning and servicing. NOTE: When a cooling coil for central air conditioning is involved, caution should be taken to insure "tapping in" where there is any restriction of air-flow to the humidifier. (See Figure 1.)



IMPORTANT: It is the responsibility of the INSTALLER to insure that the installation is made in accordance with local codes, and in a manner that does not conflict with warranties on other equipment.

9. Insert the rotating drum. The LOBB WA-2700 and WA-1700 Humidifiers are designed to insert or remove the drum from either top or bottom of unit.

10. A. Attach water pan on WA-2700 with stainless steel pan clips. Clips are applied with dimpled side up into molded slot and locked in position by sliding 1/4" toward back of unit.

10. B. Attach water pan on WA-1700 by inserting pan so that molded lips on rear of pan lock into rear bar on case – secure by use of brass holding screw in front.

11. Water Level Adjustment- If necessary

With pan in place, open water supply saddle valve. To adjust water level, loosen turn thumb screw and adjust float arm up or down. Move float arm up to increase water level, or move it down to lower the water level. Tighten thumb screw after adjustment. Water level should be approximately 1/2" below the upper edge of the pan liner.

Do Not Overtighten Thumb Screw!

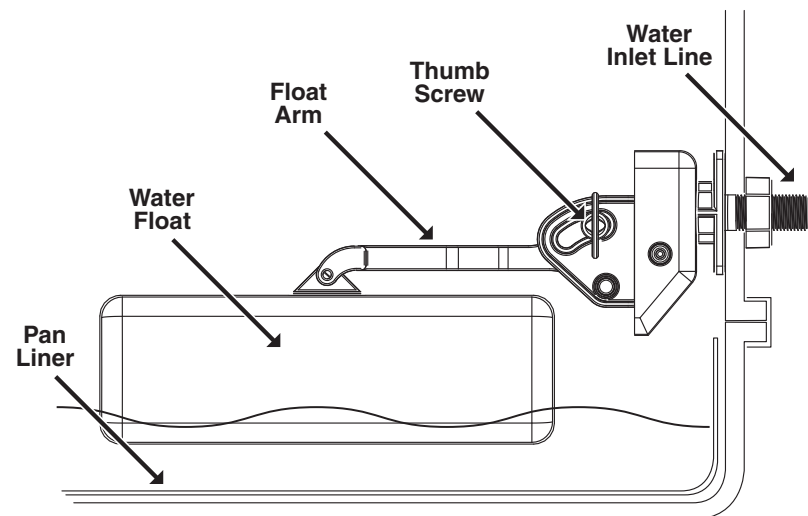
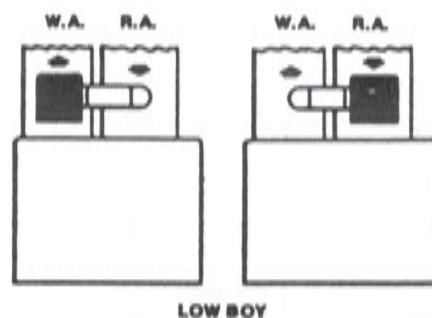
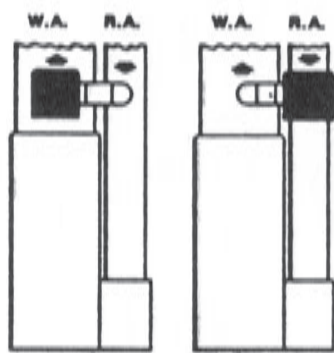


Figure 5

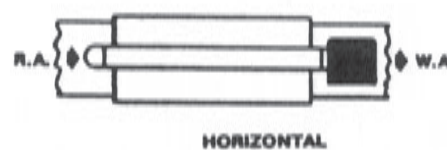
PROPER APPLICATIONS OF MODEL WA-2700 & WA-1700



LOW BOY



HIGH BOY



HORIZONTAL

2. When mounting position has been located on the plenum, scribe a level line 12" up from the top of the furnace. Place edge of the pressure sensitive template on the scribed line and smooth out.

3. Center punch the four (4) holes as indicated for model being installed, and drill 1/8" holes. Using a heavy screw driver or chisel and hammer, slash starting hole in the center of cutting line on template. Insert shears and cut to line and follow outline for opening. Remove remainder of template. (See Figure 2.)

WIRING – 24 VOLT

1. All wiring must comply with local codes and ordinances. See diagrams below. (Other optional diagrams are shown in humidistat instructions.)

NOTE: Necessary low voltage wire to be provided by installer.

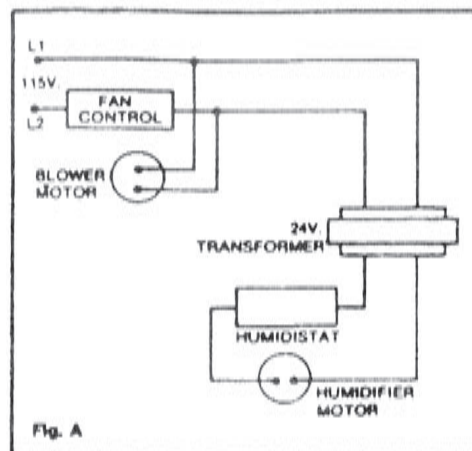


Fig. A

FIG. A. Typical wiring diagram for system with single speed blower motor.

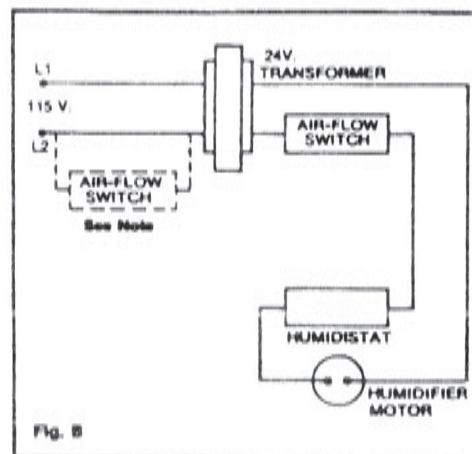


Fig. B

FIG. B. Typical wiring diagram for systems with multi-speed blower or when power source is external to furnace system.

NOTE: Air flow switch can be located ahead of transformer when electronic air cleaner is also to be controlled.

2. Set furnace controls so that fan is running. Turn humidistat to "ON" – Humidifier should run. Set furnace controls so that fan stops – Humidifier should stop.

3. Set furnace controls and humidistat to desired condition (35% is recommended). The humidifier will operate automatically.

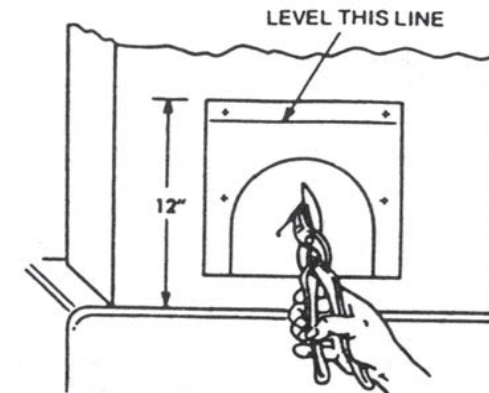


Figure 2

4. Model WA-2700 & WA-1700 are designed with a reversible side cover plate for the by-pass openings. Select the side to be used and insert one of the metal collars into opening and secure by bending tabs down. Side cover plates are installed in opposite opening.

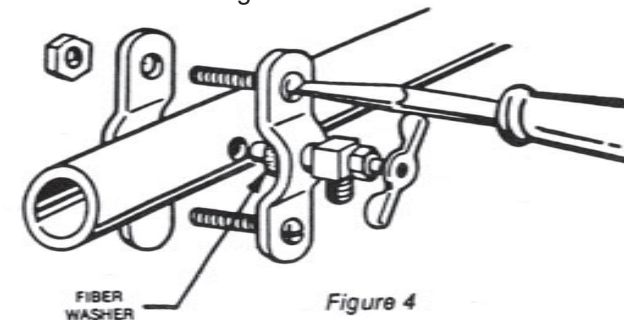
5. Insert two (2) top mounting screws and hang main body of humidifier on plenum. -- DO NOT TIGHTEN.

6. Sighting along a level line, select a location for the connecting collar. Using the collar as a template, scribe a circle. Check diameter before cutting. (7" for Model WA-2700 and 6" for Model WA-1700.) Use same cutting procedure. Insert collar and secure by bending down tabs.

7. Make by-pass connection using necessary pipe and elbows or flexible duct. Insert two (2) bottom mounting screws. Tighten all four (4) screws.

WATER SUPPLY

8. Select nearest water pipe. Mount saddle valve as illustrated in drawing (See Figure 4.) Two (2) brass ferrules and two (2) 1/4" compression nuts are furnished to complete the connections at the saddle valve and the unit. The installer will furnish the necessary length of 1/4" water inlet tubing.



LOBB®

Power Humidifiers

Installation and Operation Instructions



WA-2700
Plenum Type

WA-1700
Plenum Type



723 S. Route 31 • West Dundee, IL 60118

(248)623-0222

Fax (248)623-0445

Website • www.lobbair.com