

This Owner's Manual is provided and hosted by [Appliance Factory Parts](#).

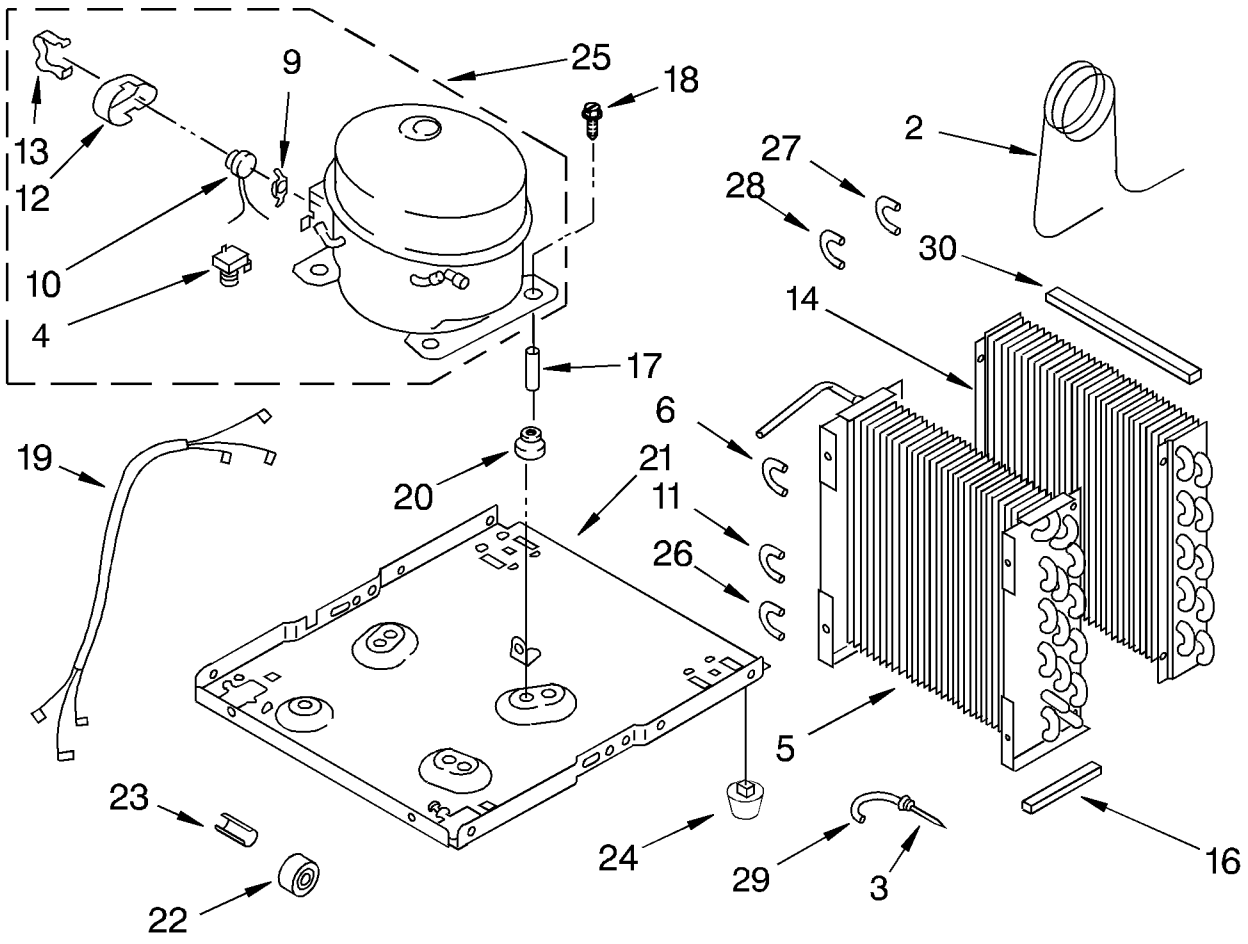


CHAMBERS BPDH4000AS2 Owner's Manual

[Shop genuine replacement parts for CHAMBERS
BPDH4000AS2](#)

[Find Your CHAMBERS Dehumidifier Parts - Select From 11 Models](#)

----- Manual continues below -----



LITERATURE PARTS

| | | |
|----|------------|---------------------------------|
| | LIT1165327 | Sheet, Tech |
| | LIT1165310 | Diagram, Wiring |
| | LIT1162709 | Use & Care Guide Manual |
| 2 | 1162154 | Tube, Restrictor (46.0" Length) |
| 3 | 1162526 | Strainer |
| 4 | 950058 | Relay |
| 5 | 1163097 | Condenser |
| 6 | 1158407 | Bend Return (1) |
| 9 | 950061 | Spring, Overload |
| 10 | 1163837 | Overload |
| 11 | 708531 | Bend Return (8) |
| 12 | 950055 | Cover, Terminal |
| 13 | 950056 | Retainer, Cover |
| 14 | 1162933 | Evaporator |
| 16 | 1162372 | Seal |
| 17 | 646498 | Sleeve (4) |
| 18 | 1166034 | Bolt, 1/4-28 x 1 (4) |
| 19 | 1164816 | Harness, Wire |
| 20 | 646499 | Grommet (4) |
| 21 | 1157584 | Base |
| 22 | 998726 | Roller (2) |
| 23 | 489015 | Roll Pin-2.0 LG |
| 24 | 951886 | Glide-Natural (2) |
| 25 | 1164774 | Compressor, (Complete Assembly) |
| 26 | 708532 | Bend, Return (4) |
| 27 | 855199 | Bend, Return (8) |
| 28 | 854624 | Bend, Return (1) |
| 29 | 1156533 | Bend, Return (1) |
| 30 | 1162348 | Seal, Evaporator Top |

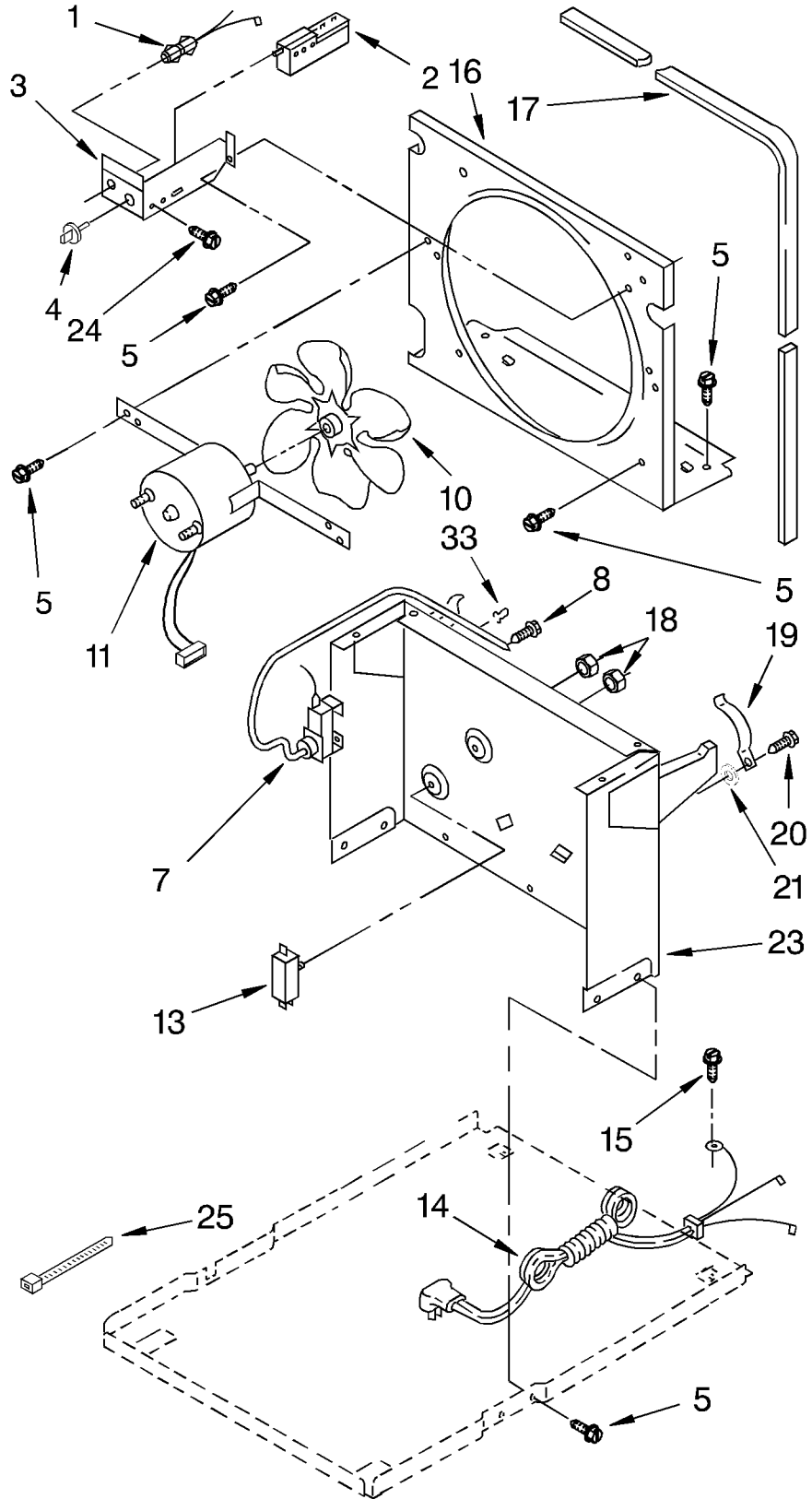
Following Parts Not Illustrated and Optional Parts Not Included

| | |
|---------|------------------|
| 1162476 | PTC Start Device |
| 1162477 | PTC Clamp |
| 1162377 | Wire Assy. (2) |
| 488480 | Screw 8-18 x 1/2 |

REFRIGERANT CHARGE 8.75 OZ.

AIR FLOW AND CONTROL PARTS

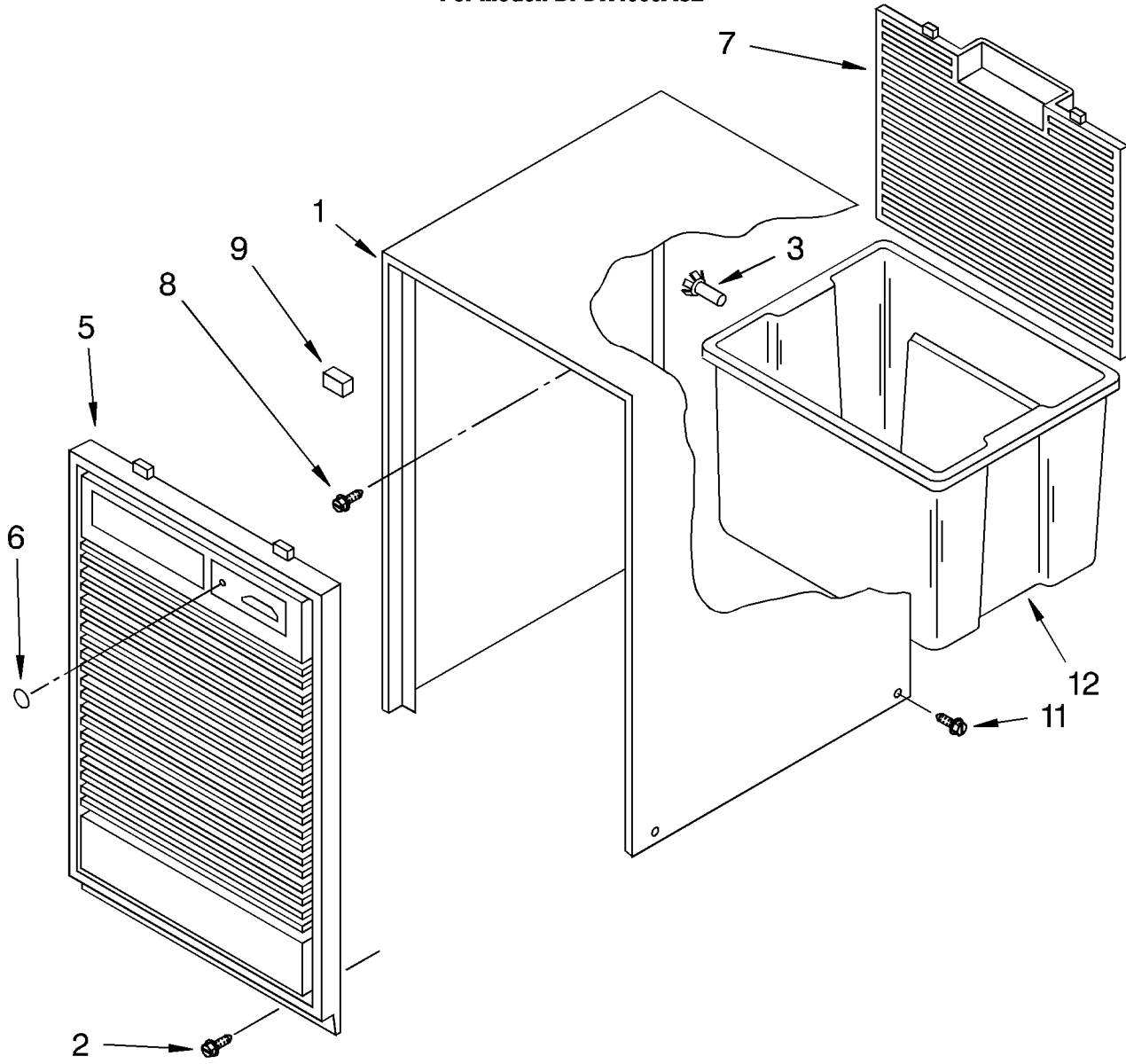
For Model: BPDH4000AS2



| | | |
|----|---------|-----------------------------------|
| 1 | 1164804 | Light, Indicator |
| 2 | 1162578 | Humidistat, Control |
| 3 | 951284 | Bracket, Control |
| 4 | 1162670 | Knob, Control (1) |
| 5 | 488480 | Screw, S.M. #8 x 1/2 |
| 7 | 1164779 | Control, Deicer |
| 8 | 488234 | Screw, 8-32 x 1/4 (2) |
| 10 | 949645 | Blade, Fan |
| 11 | 1164813 | Motor, Fan |
| 13 | 999747 | Switch, Water Level Control |
| 14 | 1164784 | Cord, Appliance |
| 15 | 487871 | Screw, 8-32 x 3/8 |
| 16 | 998779 | Plate, Orifice |
| 17 | 1162704 | Seal |
| 18 | 489001 | Palnut, 3/8-32 |
| 19 | 1161718 | Spring, Water Level |
| 20 | 1166054 | Screw 8-18 x 5/8 |
| 21 | | Washer, Repair |
| | 489083 | .030 Thickness |
| | 489091 | .045 Thickness |
| | 489029 | .060 Thickness |
| 23 | 1163800 | Support |
| 24 | 1162513 | Screw, S.M.#8 x 1/4 |
| 25 | 602851 | Tie, Cable (3) |
| 33 | 471363 | Clamp, Tube To Evaporator Mtg (2) |

CABINET PARTS

For Model: BPDH4000AS2



| | | |
|----|---------|---------------------------------|
| 1 | 998821 | Cabinet |
| 2 | 1164763 | Screw, 8-32 x 1/2 (2) |
| 3 | 998813 | Retainer, Pin (2) (Rear Grille) |
| 5 | 1162669 | Grille, Front |
| 6 | 998846 | Lens, Light |
| 7 | 998832 | Grille, Rear |
| 8 | 489073 | Screw, 8 x 3/8 |
| 9 | 948584 | Spacer, Grille |
| 11 | 1158781 | Screw |
| 12 | 951901 | Pan, Condensate |

Following Parts Not Illustrated and Optional Parts Not Included

| | |
|--------|---|
| 485426 | Lacquer, Starlight Gray (1/2 Pt. Uncut) |
| 646753 | Cap, Condensate Pan |
| 647338 | Washer, Cap (Condensate Pan) |
| 799833 | Epoxy, Tube (Aluminum Repair) |
| 505168 | Tape, No Drip (30') Valve, Access |
| 978025 | 1/4" Tube O.D. |
| 978026 | 5/16" Tube O.D. |
| 978027 | 3/8" Tube O.D. |
| 978028 | 1/2" Tube O.D. |
| 978029 | 5/8" Tube O.D. |
| 978030 | 3/4" Tube O.D. |
| 978865 | Seal, Ring Access Valve (20 Pack) |
| 212643 | Permagum (4 - 12" Strips) |