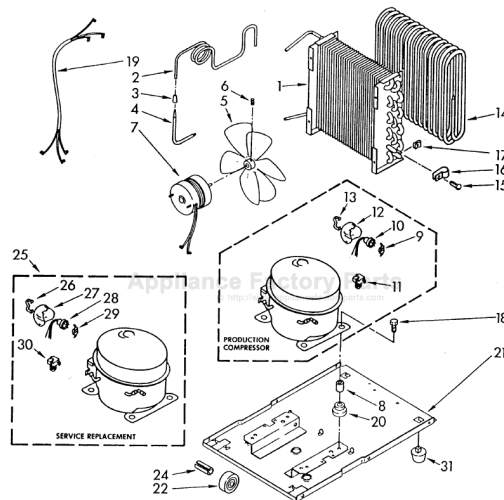


This Owner's Manual is provided and hosted by [Appliance Factory Parts](http://Appliance Factory Parts).



# WHIRLPOOL AD0152XM0 Owner's Manual

[Shop genuine replacement parts for WHIRLPOOL  
AD0152XM0](#)



[Find Your WHIRLPOOL Dehumidifier Parts - Select From 309 Models](#)

----- Manual continues below -----

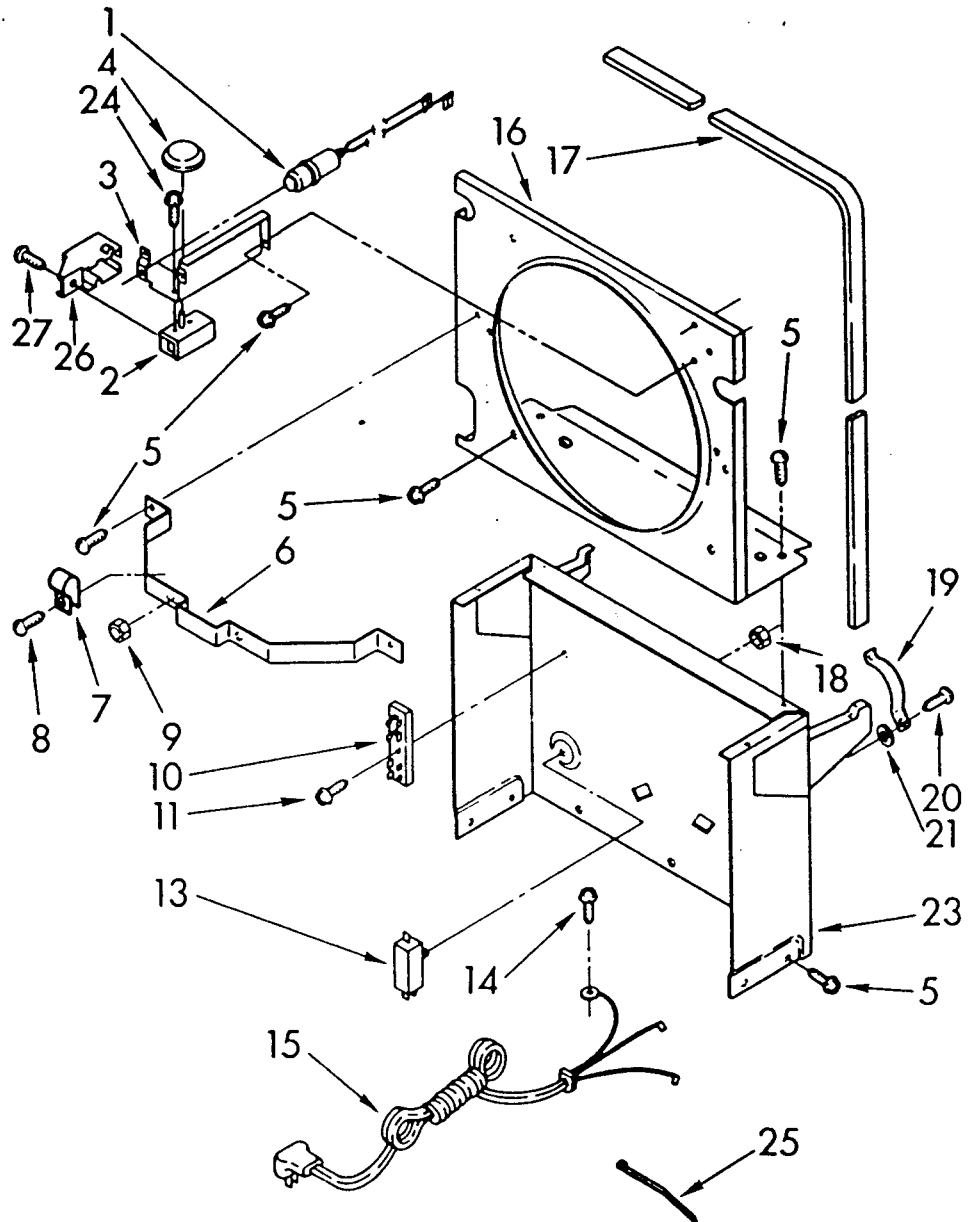
**PARTS  
LIST  
FOR**



**DEHUMIDIFIER**

**MODEL  
AD-0152-XM0**

**FRAME AND CONTROL PARTS**



1-84 Litho in U.S.A.

**Whirlpool CORPORATION**  
Benton Harbor, Michigan.

159-G-12

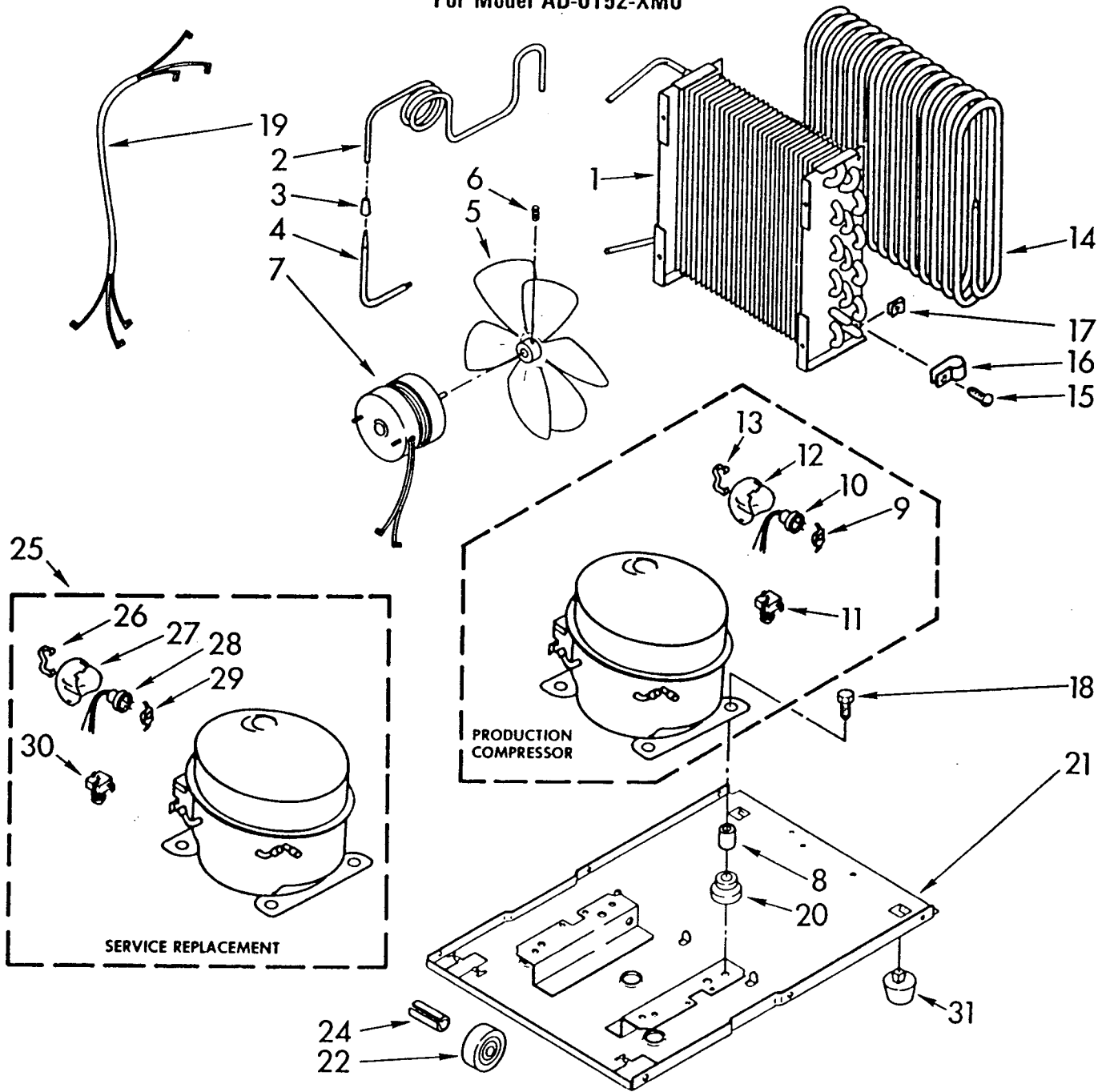


Part No. 789048

|    |        |                                      |
|----|--------|--------------------------------------|
| 1  | 950747 | Light, Indicator                     |
| 2  | 951280 | Humidistat Assembly                  |
| 3  | 951285 | Bracket, Humidistat & Light Assembly |
| 4  | 998859 | Knob, Humidistat Control             |
| 5  | 488624 | Screw, SM #8 x 3/8A                  |
| 6  | 998777 | Bracket, Fan Motor Mounting          |
| 7  | 488946 | Clamp, Tube (4)                      |
| 8  | 487910 | Screw, 8 x 1/2A                      |
| 9  | 488130 | Nut, Fan Motor 8-32 (2)              |
| 10 | 950431 | Board, Terminal                      |
| 11 | 488966 | Screw, SM #6 x 3/8                   |
| 13 | 998783 | Switch, Water Level Control          |
| 14 | 487871 | Screw, 8-32 x 5/32                   |
| 15 | 950743 | Cord, Appliance                      |
| 16 | 998779 | Plate, Orifice                       |
| 17 | 998802 | Seal                                 |
| 18 | 489001 | Palnut, 3/8-32                       |
| 19 | 998730 | Spring, Water Level                  |
| 20 | 488480 | Screw, SM #8 x 1/2A                  |
| 21 |        | Washer, Repair                       |
|    | 489083 | .030 Thickness                       |
|    | 489091 | .045 Thickness                       |
|    | 489029 | .060 Thickness                       |
| 23 | 998729 | Support                              |
| 24 | 488889 | Screw, 8-32 x 5/32                   |
| 25 | 857547 | Tie, Cable                           |
| 26 | 951281 | Cover, Terminal                      |
| 27 | 488234 | Screw, 8-32 x 1/4                    |

# UNIT PARTS

For Model AD-0152-XM0



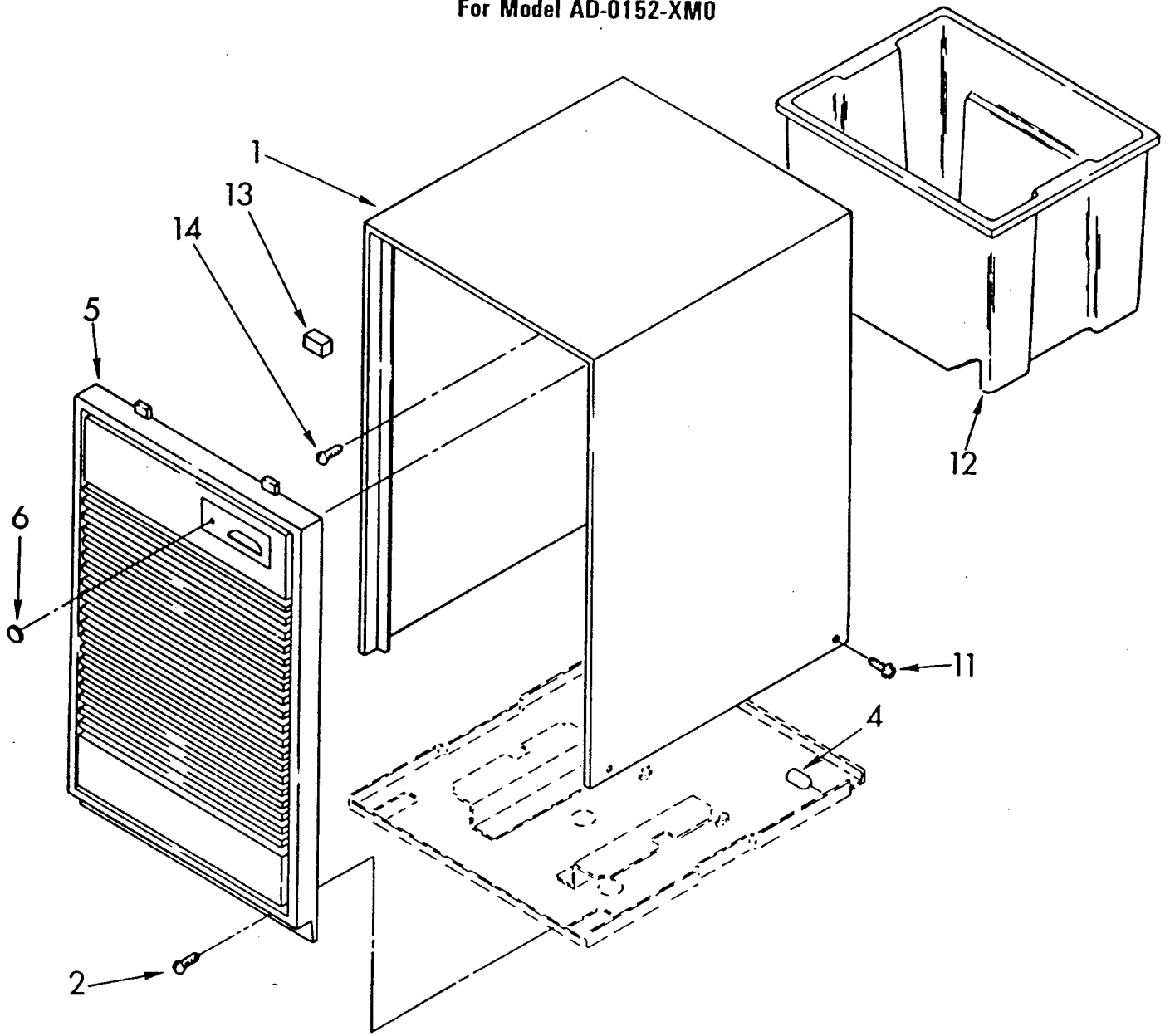
FOR ORDERING INFORMATION REFER TO PARTS PRICE LIST

789048

|    |        |   |
|----|--------|---|
| 1  | 949893 | Condenser                               |
| 2  | 998759 | Tube, Restrictor (Length 35.0")         |
| 3  | 474013 | Strainer, Outlet Tube                   |
| 4  | 949896 | Tube, Outlet (Includes Item 3)          |
| 5  | 948756 | Blade, Fan (Includes Item 6)            |
| 6  | 488035 | Setscrew, 1/4 x 5/16                    |
| 7  | 949635 | Motor, Fan                              |
| 8  | 646498 | Sleeve (4)                              |
| 9  | 950061 | Spring, Overload                        |
| 10 | 950248 | Overload, Protector                     |
| 11 | 950249 | Relay, Start                            |
| 12 | 950055 | Cover, Terminal                         |
| 13 | 950056 | Retainer, Cover                         |
| 14 | 995082 | Evaporator                              |
| 15 | 487910 | Screw, 8 x 3/8 (4)                      |
| 16 | 488946 | Clamp, Tube (4)                         |
| 17 | 486197 | Nut, Speed (4)                          |
| 18 | 488400 | Screw, 1/4-28 x 1" (4)                  |
| 19 | 484136 | Harness, Wire                           |
| 20 | 646499 | Grommet (4)                             |
| 21 | 949976 | Base                                    |
| 22 | 998726 | Roller (2)                              |
| 24 | 489015 | Roll Pin (2)                            |
| 25 | 485780 | Compressor, Service (Complete Assembly) |
| 26 | 831282 | Retainer, Cover                         |
| 27 | 865068 | Cover, Terminal                         |
| 28 | 876690 | Overload, Protector                     |
| 29 | 549086 | Spring, Overload                        |
| 30 | 876693 | Relay                                   |
| 31 | 998725 | Glide (2)                               |

# CABINET PARTS

For Model AD-0152-XM0



|    |        |                          |
|----|--------|--------------------------|
| 1  | 998821 | Cabinet                  |
| 2  | 489104 | Screw, 8-32 x 3/8 (2)    |
| 4  | 998869 | Cap, Thread Cover (2)    |
| 5  | 950269 | Grille, Front            |
| 6  | 998846 | Light Lens               |
| 11 | 489016 | Screw, TC 8-32 x 3/8 (4) |
| 12 | 998801 | Pan, Condensate          |
| 13 | 948584 | Spacer, Grille           |
| 14 | 489073 | Screw, SM #8 x 32 (2)    |

Parts Not Illustrated And Optional Parts (Not Included)

|        |   |
|--------|---|
| 646753 | Cap, Condensate Pan                     |
| 647338 | Washer, Cap (Condensate Pan)            |
| 485426 | Lacquer, Starlight Gray (1/2 Pt. Uncut) |
| 799351 | Thinner (1 Gal.)                        |
| 484310 | Kit, Evaporator Repair (Aluminum Epoxy) |
| 505168 | Tape, No Drip                           |
| 978025 | Valve, Access (1/4")                    |
| 978026 | Valve, Access (5/16")                   |
| 978027 | Valve, Access (3/8")                    |
| 978028 | Valve, Access (1/2")                    |
| 978029 | Valve, Access (5/8")                    |
| 978030 | Valve, Access (3/4")                    |
| 998866 | Guide, Use & Care                       |
| 950626 | Sheet, Tech (Service Information)       |
| 950628 | Guide, Use & Care                       |
| 789048 | List, Repair Parts                      |