

This Owner's Manual is provided and hosted by [Appliance Factory Parts](#).



HERRMIDIFIER HE 1400 Owner's Manual

[Shop genuine replacement parts for HERRMIDIFIER HE
1400](#)



[Find Your HERRMIDIFIER Air Cleaner Parts - Select From 27 Models](#)

----- Manual continues below -----



®

Z

Table Of

Introduction

Unit speci

Facts you

Replacing

Commen

Dear Owners:

Congratulations
family can now
know, because
Today, as the
improve the

The following
Electronic Ai

INTRODU

This elect
precipitator
including
indoor air

Air mover
ventilating
through a
large port

UNIT SPEC

This air clean
nents are th

Cabinet

Mounts to
prefilters.

Ionizing-Co

Collect the

FACTS Y ELECTRO

Dusting a

Your new
air. Unfo
furniture a
they can
particulat
cleaner c

How the A

Trion design
of controlling
the unit dir
thermistor t
at this tem
through the
surface. Th
effect allow
moving air a

High Alt

Because
nuisance
condition

1. Turn
2. Remo
3. Remo
cabin
4. Firml

REPLAC

Ionizing w
and fixed
breaks, th
However,
as the bro
loose and

Although t
owner. Tri

Comme

Q. Why

A. The a

many

locat

partic

can't

illum

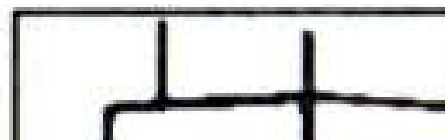
local

Q. What if
unit? Is

A. If the za
then on
has suc
microsc
blower a
the duc
air stre

MAINTENANCE

NOTICE
be s



To wash
ionizing-co
ever, Trion
the air clea
of dishwa
properly a

- 1. Place e**
to 4 oz
deterge

2. All...

COMMON

Rapid arc

Excessive

UNIT D

THE UNIVERSITY OF CHICAGO



TECHNICAL

(Specifications)

**MODELS WITH
INSTALLED AT**

PART NUMBER

UNIT COLOR

AIR FLOW S

ELECTRICAL

TYPICAL

Shaded illustration



AIR CLEANER

Atomizing

If an atomizing
it must be m

1. Mount the
a distance
arcing as
2. Install a s
and the a
3. Clean the

SELECT LOCATION

Remember
inspection area
in front and
removal and
section entire

DIRECTION

This air cle

INSTALLA

CAUTION
electronic
installati
(See Fig
hardware
installati
should b

7. Local
flow
are

8. Mo
duc
The
she
If th
inst
hea

ELECTRIC

CAUTION

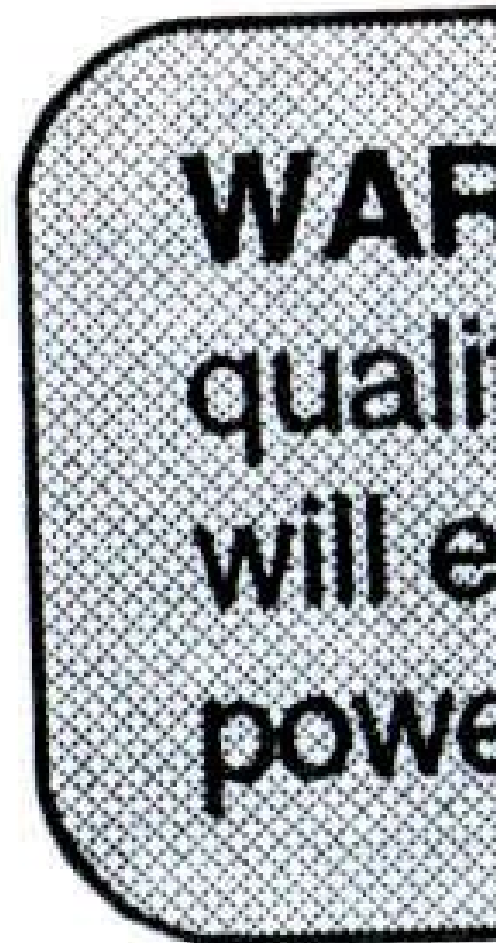
If the elec

control o

control is

All wire s

SYSTEM



1. The
2. Swi

TROUBLE

CAUTION

- These
techn
- Risk of
repair
- Exerc
- When
residu
driver

PRIMARY

If there is
power su
switch an
Diagram

Follow th
supply a

4. Equip

SECONDARY

IONIZING

The cell is at the
center of the
electrically

If the space
conductive
bridging or

CHECK

If the out
cabinet,
assembly
check th

Servicing
simplified
designer

10. With
instruc
11. Depre
collec
12. The m
13. If no v
assem
meter
14. If the p

TROU

Is unit operati

Yes

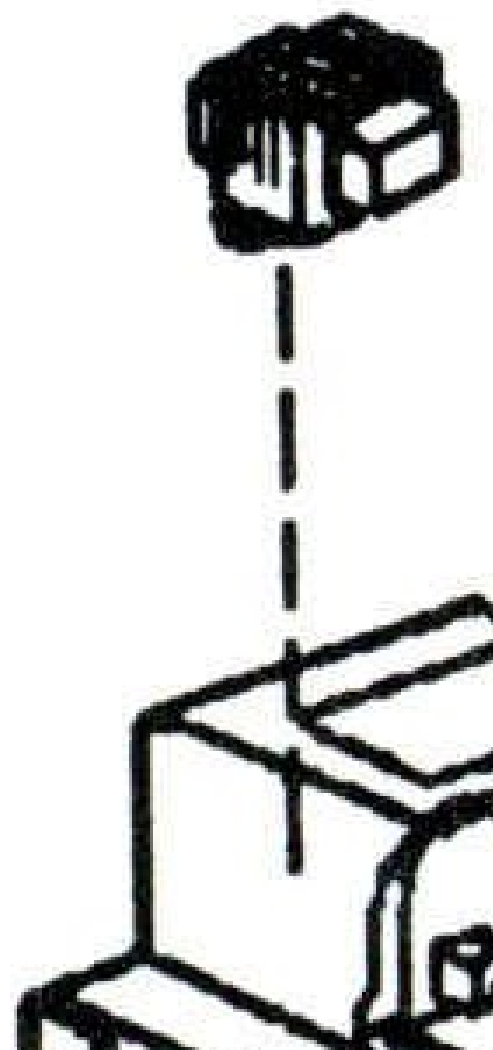


WARNING:

The following steps will

1. Replace breakers
2. Repair o
3. Inspect A

1. Check t
2. Repair o
3. Replace
4. Inspect



1	HIGH FREQU
2	POWER TRAY
3	OPTIONAL EL
4	ON/OFF SWI
5	SAFETY INTER