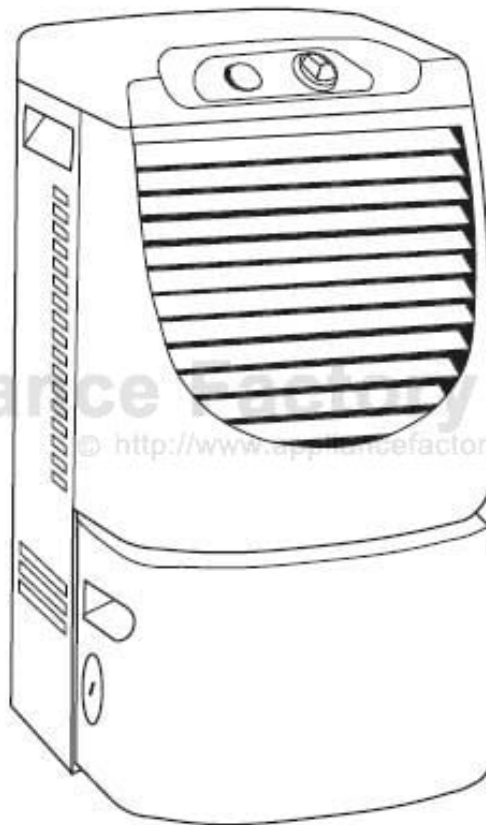


This Owner's Manual is provided and hosted by [Appliance Factory Parts](#).



# WHIRLPOOL RD50CBM0 Owner's Manual

[Shop genuine replacement parts for WHIRLPOOL  
RD50CBM0](#)



[Find Your WHIRLPOOL Dehumidifier Parts - Select From 309 Models](#)

----- Manual continues below -----

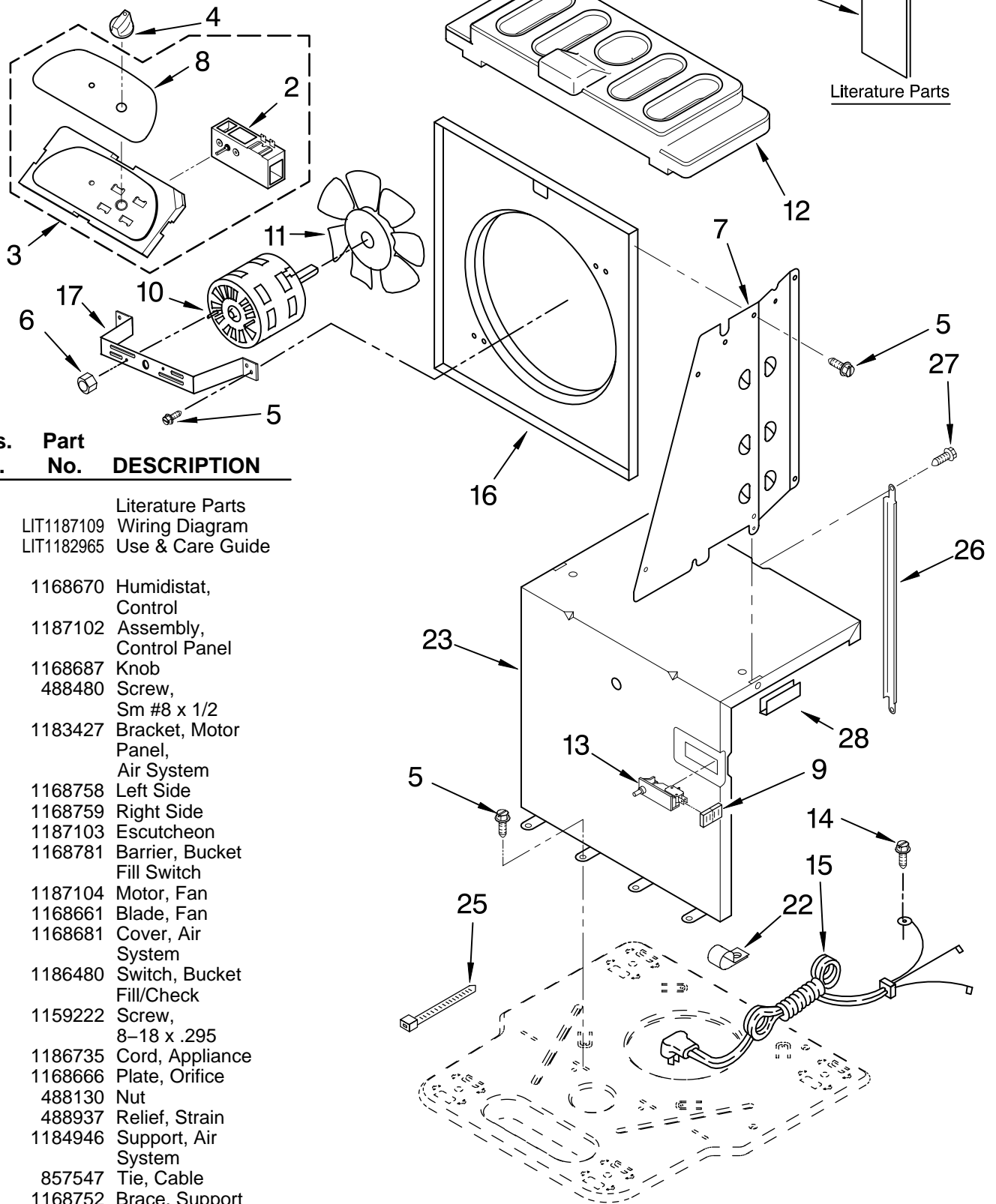


# AIR FLOW AND CONTROL PARTS

For Model: RD50CBM0

DEHUMIDIFIER

BY WHIRLPOOL CORPORATION

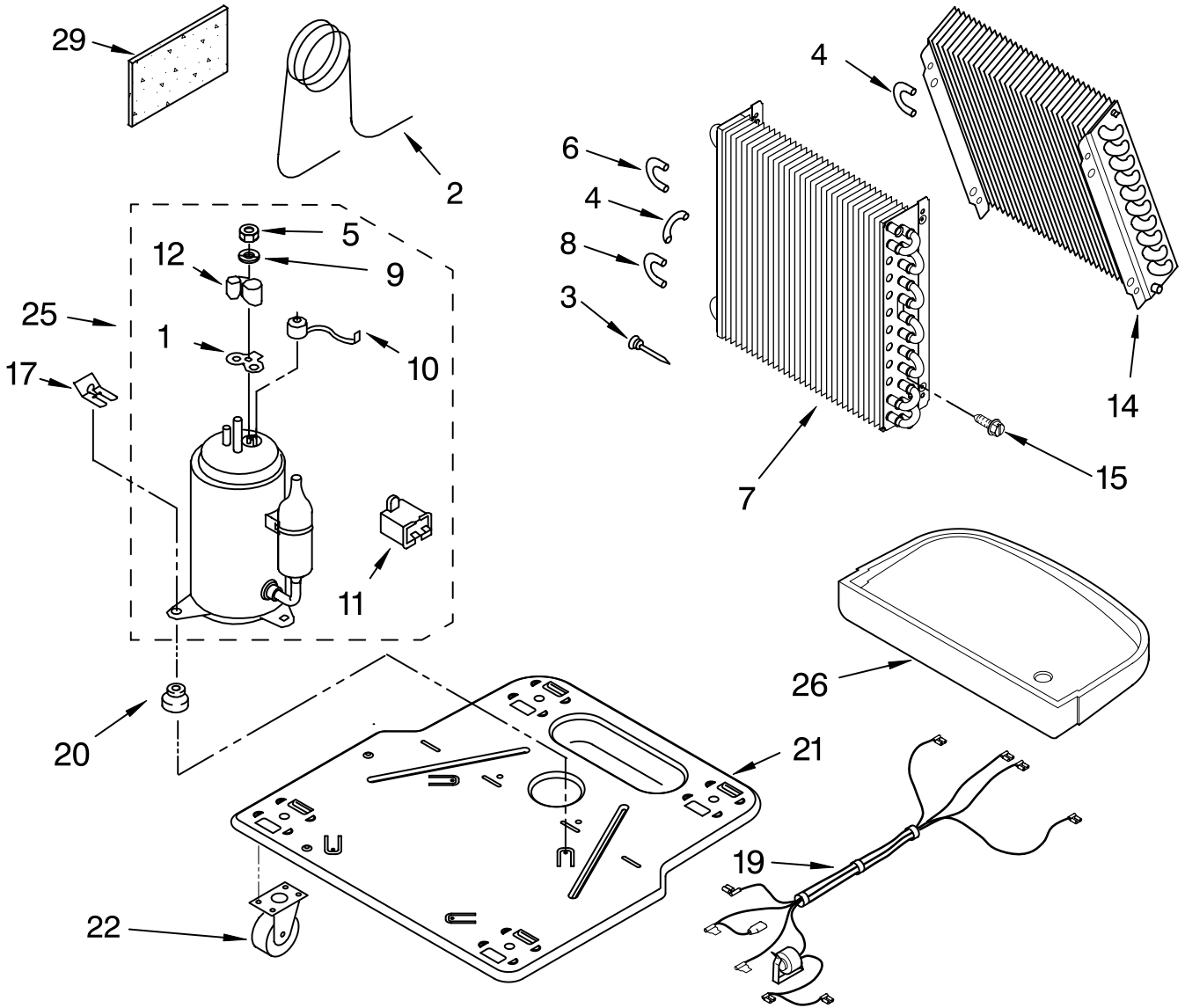


Illus. No.	Part No.	DESCRIPTION
1	LIT1187109 LIT1182965	Literature Parts Wiring Diagram Use & Care Guide
2	1168670	Humidistat, Control
3	1187102	Assembly, Control Panel
4	1168687	Knob
5	488480	Screw, Sm #8 x 1/2
6	1183427	Bracket, Motor Panel,
7	1168758 1168759	Left Side Right Side
8	1187103	Escutcheon
9	1168781	Barrier, Bucket Fill Switch
10	1187104	Motor, Fan
11	1168661	Blade, Fan
12	1168681	Cover, Air System
13	1186480	Switch, Bucket Fill/Check
14	1159222	Screw, 8-18 x .295
15	1186735	Cord, Appliance
16	1168666	Plate, Orifice
17	488130	Nut
22	488937	Relief, Strain
23	1184946	Support, Air System
25	857547	Tie, Cable
26	1168752	Brace, Support
27	1157158	Screw, 8-18 X 3/8
28	1180634	Edge Guard

FOR ORDERING INFORMATION REFER TO PARTS PRICE LIST

# UNIT PARTS

For Model: RD50CBM0



Illus. No.	Part No.	DESCRIPTION	Illus. No.	Part No.	DESCRIPTION	Illus. No.	Part No.	DESCRIPTION
1	1182118	Gasket, Terminal Cover	8	8031222	Bend, Return	22	1164241	Caster (4)
2	1168734	Tube, Restrictor (Length 30.00")	9	1182120	Gasket, Nut	25	1186706	Compressor, (Complete Assembly)
3	1162526	Strainer	10	1186960	Overload, Protector	26	1168761	Pan, Drain
4	708532	Bend, Return Evaporator	11	1186186	Capacitor	29	1184625	Insulation (Restrictor Tube)
5	1186128	Nut, Hex	12	1184748	Cover, Terminal			
6	8031223	Bend, Return Condenser	14	1185204	Evaporator			
7	1186756	Condenser	15	488480	Screw, 8 x 1/2 (4)			
			17	8011446	Clip, Compressor			
			19	1187106	Harness, Wire			
			20	1186709	Grommet (3)			
			21	1186674	Base			

### REFRIGERANT CHARGE

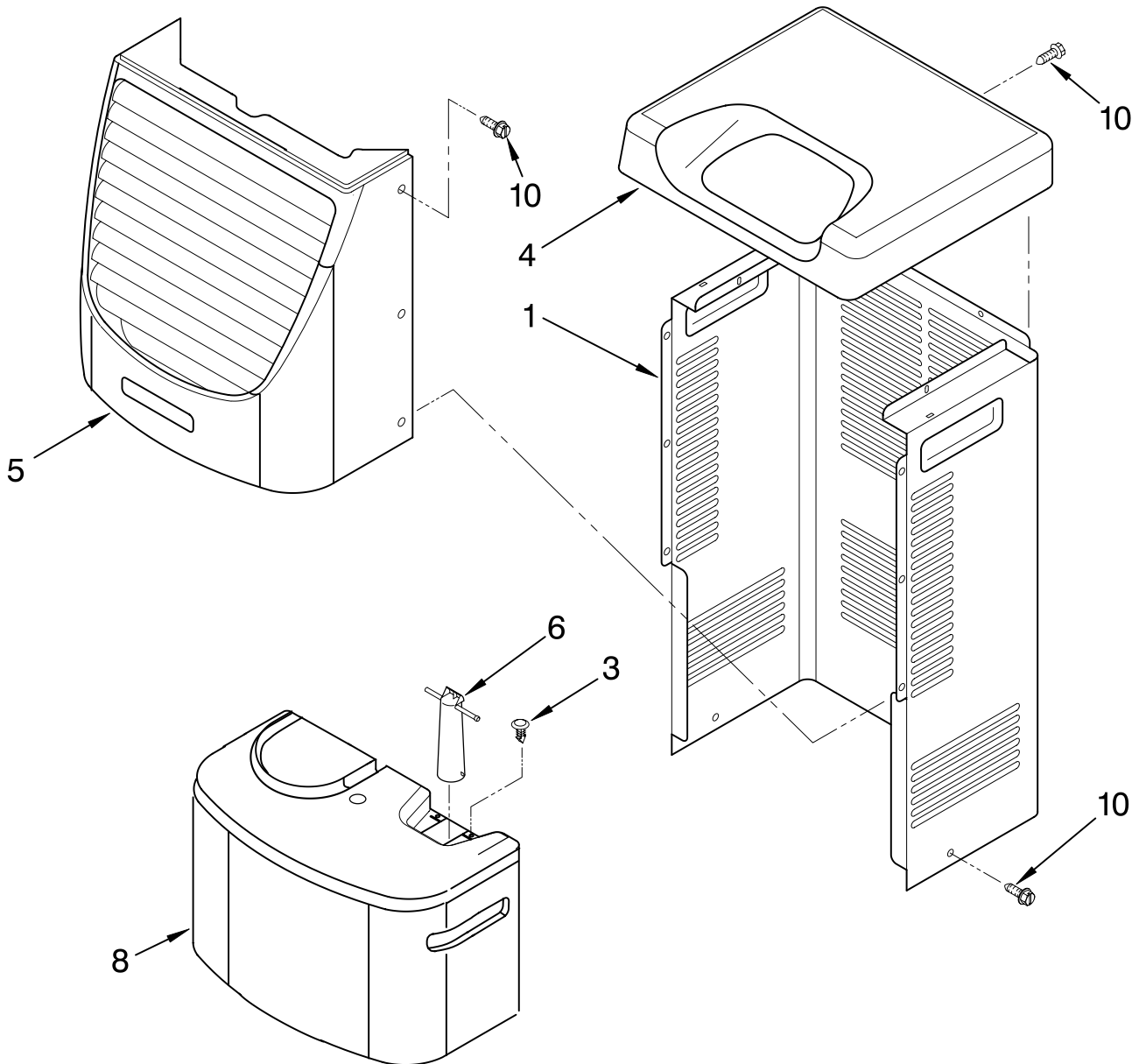
9.5 oz.

**Production Compressor Requires Production Electrical Components.  
Service Compressor Requires Service Electrical Components.  
For Further Information, Refer to Filmcard 19.1.**

FOR ORDERING INFORMATION REFER TO PARTS PRICE LIST

# CABINET PARTS

For Model: RD50CBM0



Illus. No.	Part No.	DESCRIPTION	Illus. No.	Part No.	DESCRIPTION	Illus. No.	Part No.	DESCRIPTION
1	1186822	Cabinet	OPTIONAL PARTS			978025	1/4" Tube O.D.	
3	1186430	Clip, Float	Following Parts Not Illustrated and Optional Parts Not Included			978026	5/16" Tube O.D.	
4	1168652	Cover, Top				978027	3/8" Tube O.D.	
5	1182059	Cover, Front	978028	1/2" Tube O.D.				
6	1172075	Float	978029	5/8" Tube O.D.				
8	1182080	Bucket, Condensate	978030	3/4" Tube O.D.				
10	1168744	Screw	978865	Seal, Ring Access Valve (20 Pack)				
			484310	Epoxy, Tube (Aluminum Repair)				
			505168	Tape, No Drip Valve, Access				

FOR ORDERING INFORMATION REFER TO PARTS PRICE LIST