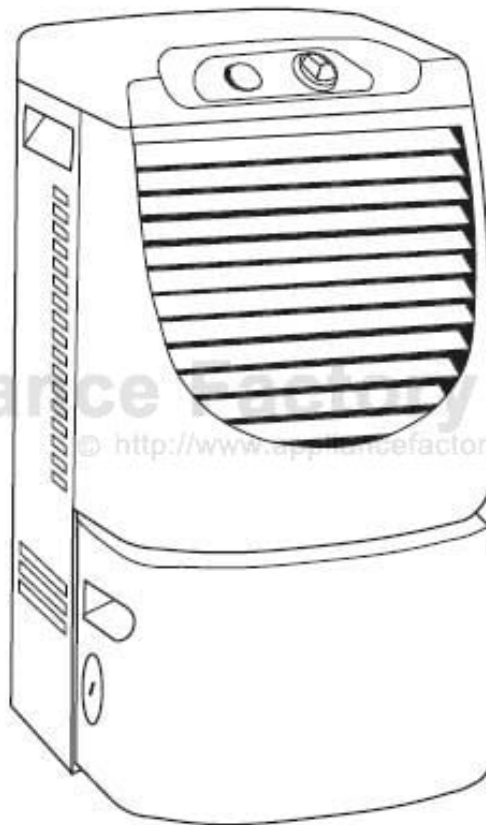


This Owner's Manual is provided and hosted by [Appliance Factory Parts](#).



WHIRLPOOL RD50CBM3 Owner's Manual

[Shop genuine replacement parts for WHIRLPOOL
RD50CBM3](#)



[Find Your WHIRLPOOL Dehumidifier Parts - Select From 309 Models](#)

----- Manual continues below -----

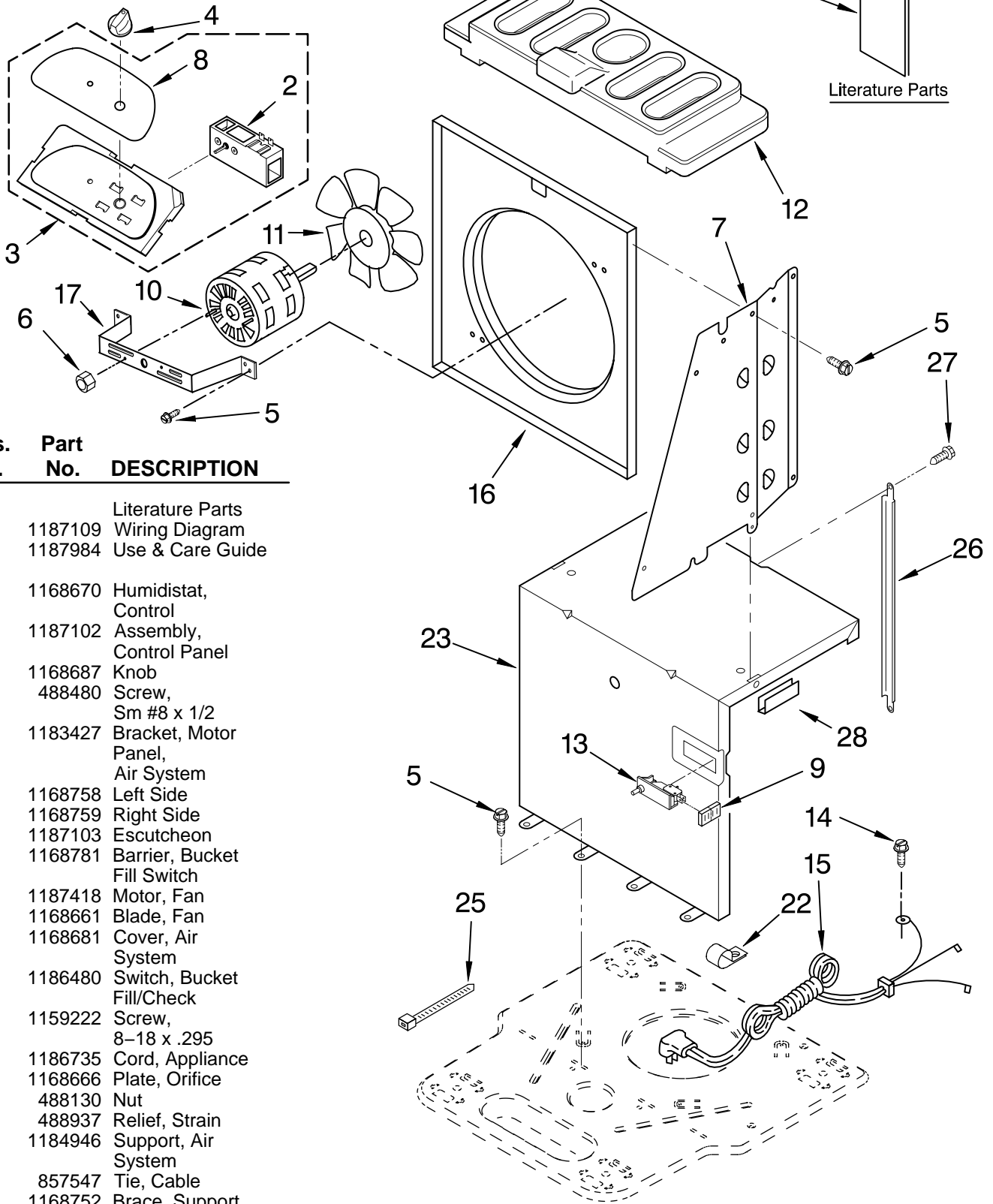


AIR FLOW AND CONTROL PARTS

For Model: RD50CBM3

DEHUMIDIFIER

BY WHIRLPOOL CORPORATION

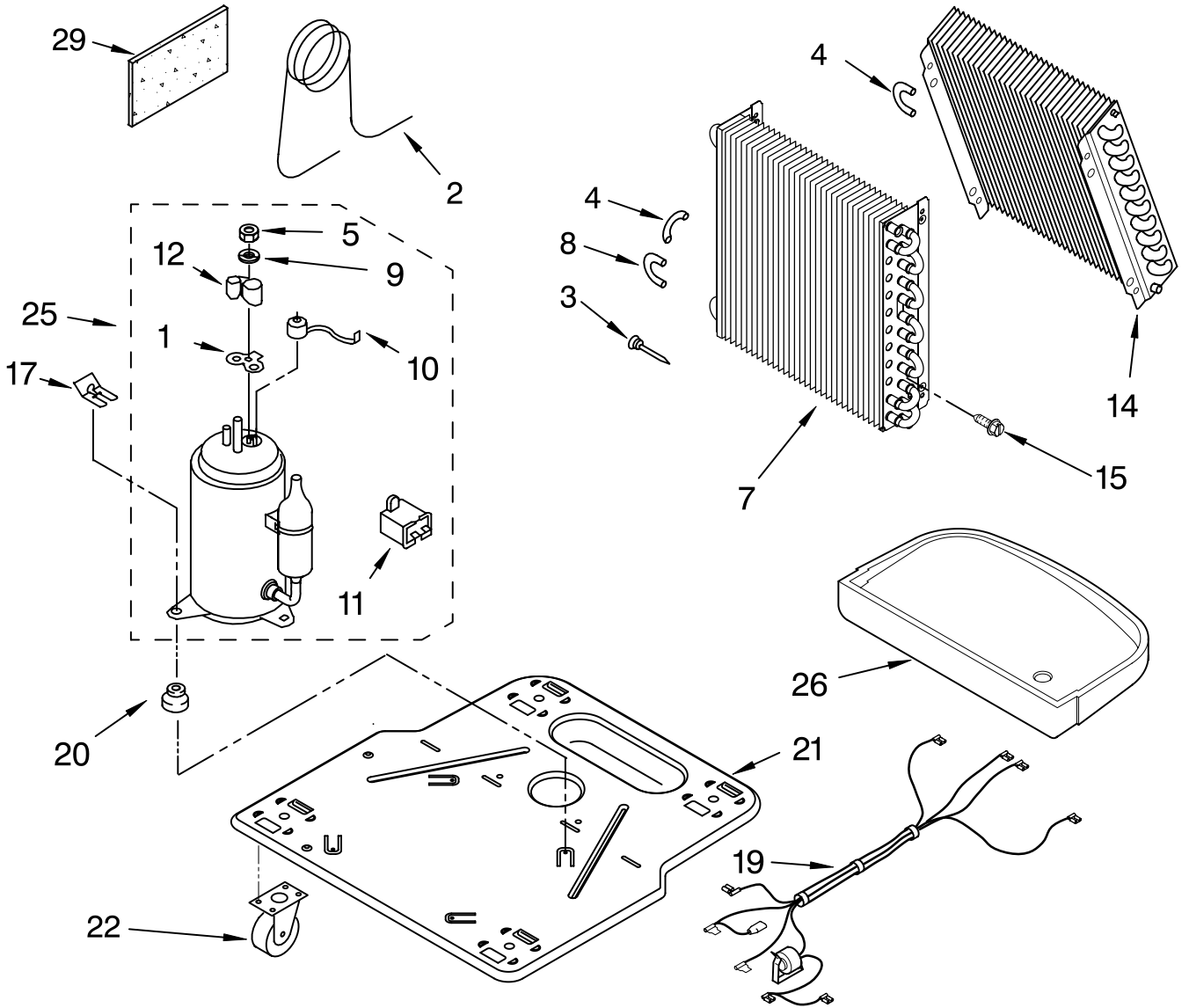


| Illus. No. | Part No. | DESCRIPTION |
|------------|----------|-----------------------------|
| 1 | | Literature Parts |
| | 1187109 | Wiring Diagram |
| | 1187984 | Use & Care Guide |
| 2 | 1168670 | Humidistat, Control |
| 3 | 1187102 | Assembly, Control Panel |
| 4 | 1168687 | Knob |
| 5 | 488480 | Screw, Sm #8 x 1/2 |
| 6 | 1183427 | Bracket, Motor Panel, |
| 7 | | Air System |
| | 1168758 | Left Side |
| | 1168759 | Right Side |
| 8 | 1187103 | Escutcheon |
| 9 | 1168781 | Barrier, Bucket Fill Switch |
| 10 | 1187418 | Motor, Fan |
| 11 | 1168661 | Blade, Fan |
| 12 | 1168681 | Cover, Air System |
| 13 | 1186480 | Switch, Bucket Fill/Check |
| 14 | 1159222 | Screw, 8-18 x .295 |
| 15 | 1186735 | Cord, Appliance |
| 16 | 1168666 | Plate, Orifice |
| 17 | 488130 | Nut |
| 22 | 488937 | Relief, Strain |
| 23 | 1184946 | Support, Air System |
| 25 | 857547 | Tie, Cable |
| 26 | 1168752 | Brace, Support |
| 27 | 1157158 | Screw, 8-18 X 3/8 |
| 28 | 1180634 | Edge Guard |

FOR ORDERING INFORMATION REFER TO PARTS PRICE LIST

UNIT PARTS

For Model: RD50CBM3



| Illus. No. | Part No. | DESCRIPTION |
|------------|----------|----------------------------------|
| 1 | 1182118 | Gasket, Terminal Cover |
| 2 | 1168734 | Tube, Restrictor (Length 30.00") |
| 3 | 1162526 | Strainer |
| 4 | 708532 | Bend, Return Evaporator |
| 5 | 1186128 | Nut, Hex |
| 7 | 1187544 | Condenser |
| 8 | 708531 | Bend, Return |
| 9 | 1182120 | Gasket, Nut |

| Illus. No. | Part No. | DESCRIPTION |
|------------|----------|---------------------|
| 10 | 1186960 | Overload, Protector |
| 11 | 1186186 | Capacitor |
| 12 | 1184748 | Cover, Terminal |
| 14 | 1185204 | Evaporator |
| 15 | 488480 | Screw, 8 x 1/2 (4) |
| 17 | 8011446 | Clip, Compressor |
| 19 | 1187734 | Harness, Wire |
| 20 | 950212 | Grommet (3) |
| 21 | 1186674 | Base |

| Illus. No. | Part No. | DESCRIPTION |
|------------|----------|---------------------------------|
| 22 | 1164241 | Caster (4) |
| 25 | 1187683 | Compressor, (Complete Assembly) |
| 26 | 1168761 | Pan, Drain |
| 29 | 1184625 | Insulation (Restrictor Tube) |

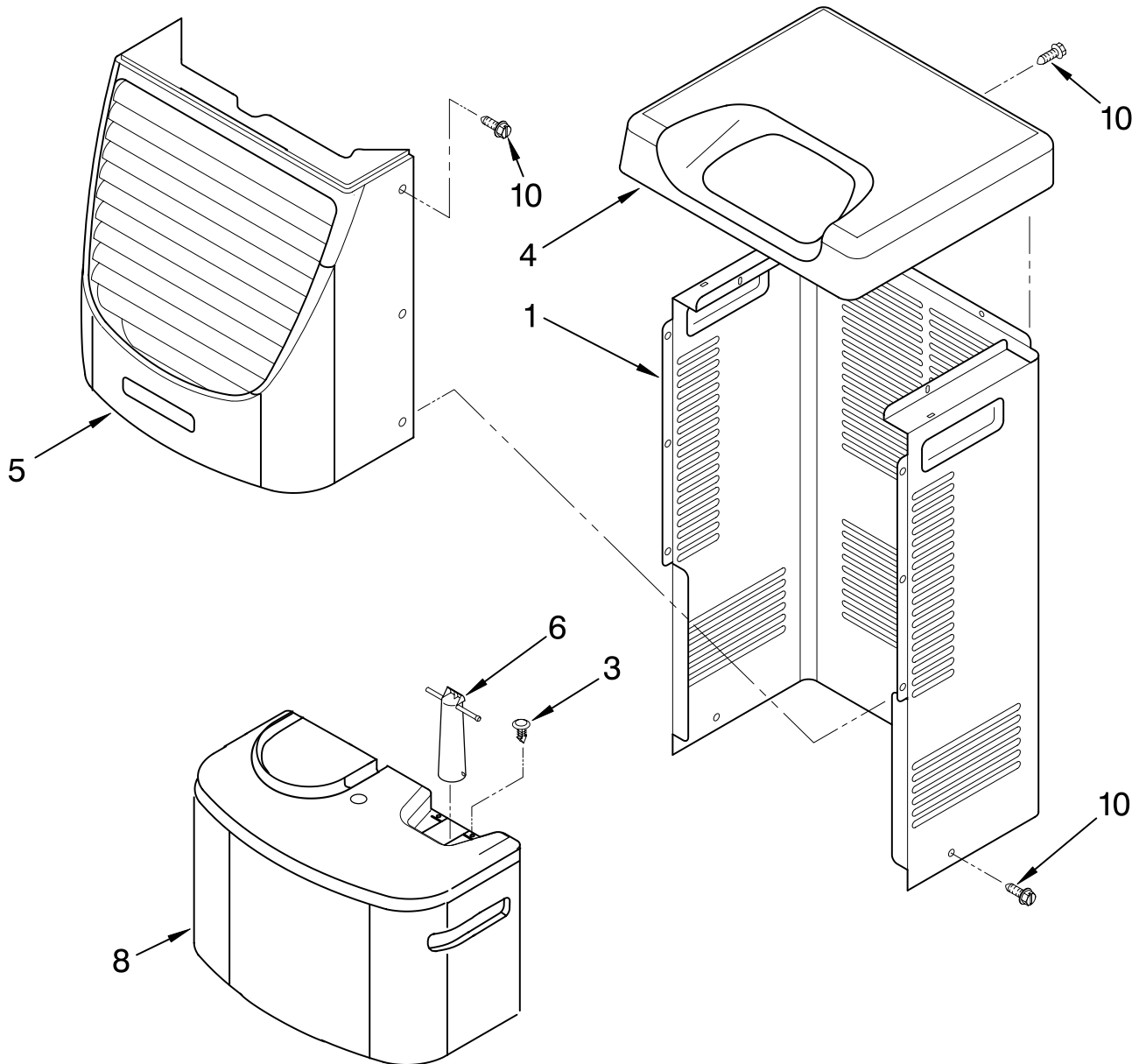
REFRIGERANT CHARGE

8.0 oz.

FOR ORDERING INFORMATION REFER TO PARTS PRICE LIST

CABINET PARTS

For Model: RD50CBM3



| Illus. No. | Part No. | DESCRIPTION |
|------------|----------|--------------------|
| 1 | 1186822 | Cabinet |
| 3 | 1186430 | Clip, Float |
| 4 | 1168652 | Cover, Top |
| 5 | 1182059 | Cover, Front |
| 6 | 1172075 | Float |
| 8 | 1182080 | Bucket, Condensate |
| 10 | 1168744 | Screw |

| Illus. No. | Part No. | DESCRIPTION |
|--|----------|-------------------------------|
| OPTIONAL PARTS | | |
| Following Parts Not Illustrated and Optional Parts Not Included | | |
| | 484310 | Epoxy, Tube (Aluminum Repair) |
| | 505168 | Tape, No Drip Valve, Access |

| Illus. No. | Part No. | DESCRIPTION |
|------------|------------|-----------------------------------|
| | 978025 | 1/4" Tube O.D. |
| | 978026 | 5/16" Tube O.D. |
| | 978027 | 3/8" Tube O.D. |
| | 978028 | 1/2" Tube O.D. |
| | 978029 | 5/8" Tube O.D. |
| | 978030 | 3/4" Tube O.D. |
| | 978865BULK | Seal, Ring Access Valve (20 Pack) |

FOR ORDERING INFORMATION REFER TO PARTS PRICE LIST