

# PARTS LIST

for

**ROPER**®

## AIR CONDITIONER

### MODEL

### X10002W01



FOR CUSTOMER SATISFACTION ALWAYS USE  
FACTORY SPECIFICATION PARTS

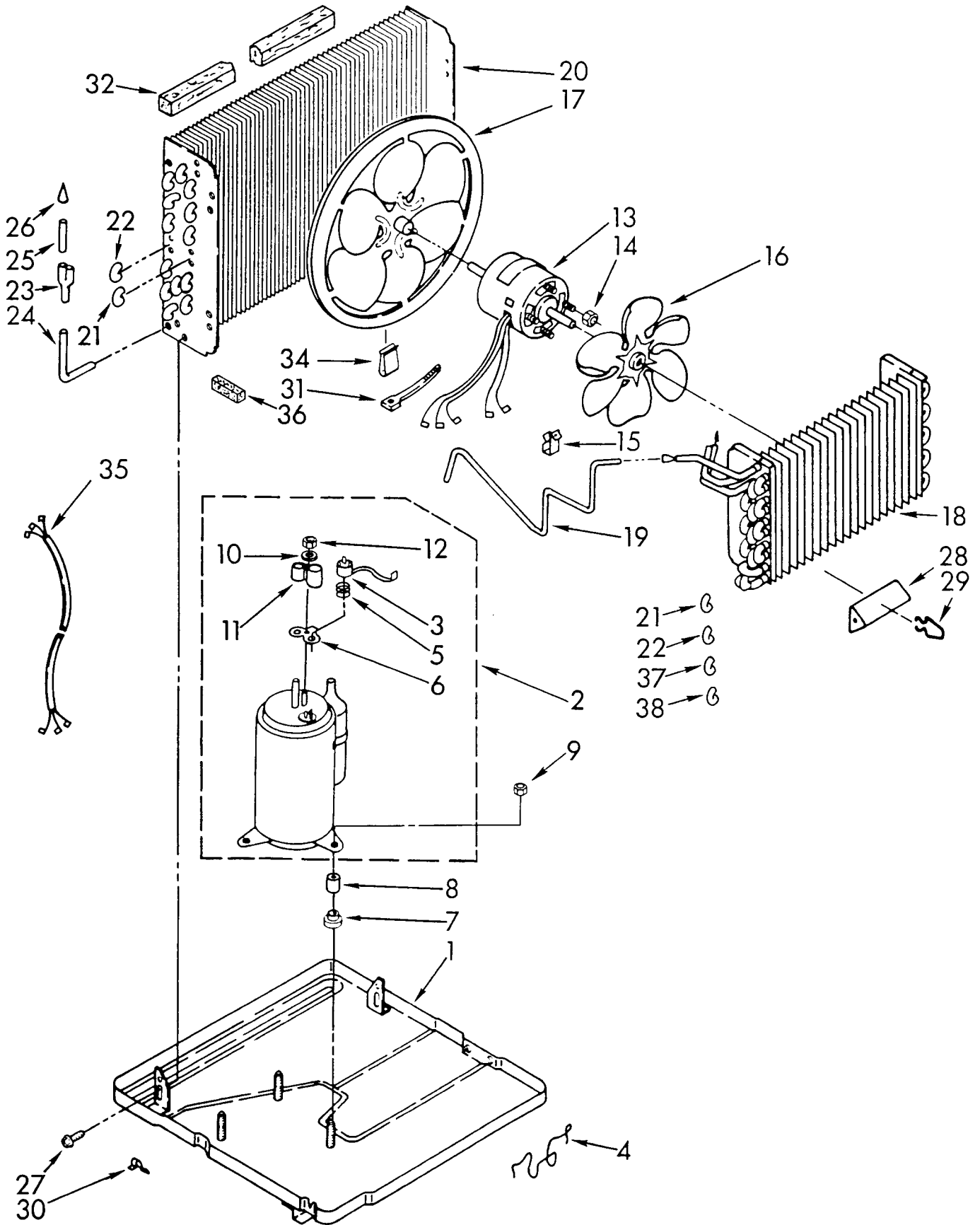


**Whirlpool** CORPORATION  
Benton Harbor, Michigan.

© 1990 WHIRLPOOL CORPORATION

# UNIT PARTS

For Model: X10002W01



- 21 → 6
- 22 → 6
- 37 → 6
- 38 → 6

FOR ORDERING INFORMATION REFER TO PARTS PRICE LIST

|    |         |                                             |
|----|---------|---------------------------------------------|
| 1  | 950019  | Base                                        |
| 2  | 819045  | Compressor                                  |
| 3  | 951865  | Overload                                    |
| 4  | 949634  | Clip, Cabinet Front Mtg (2)                 |
| 5  | 950032  | Spring, Overload                            |
| 6  | 950035  | Gasket, Cover                               |
| 7  | 950021  | Grommet, Compressor Mounting (3)            |
| 8  | 950020  | Sleeve, Compressor Mounting (3)             |
| 9  | 858121  | Nut, Lock (3)                               |
| 10 | 950037  | Gasket, Nut                                 |
| 11 | 950036  | Cover, Terminal                             |
| 12 | 950027  | Nut, Hex 1/4-28                             |
| 13 | 947852  | Motor, Fan                                  |
| 14 | 488130  | Nut, Hex Keps 8-32 (4)                      |
| 15 | 852451  | Clamp, Cable                                |
| 16 | 1157116 | Blade, Fan (Evaporator)                     |
| 17 | 997904  | Blade, Fan (Condenser)                      |
| 18 | 1156532 | Evaporator                                  |
| 19 | 1156455 | Tube, Restrictor (Length 49.0")             |
| 20 | 1155550 | Condenser                                   |
| 21 | 708531  | Bend, Return Condenser (16) Evaporator (12) |
| 22 | 708532  | Bend, Return Condenser (4) Evaporator(2)    |
| 23 | 947364  | Tube, Flow Divider                          |
| 24 | 1155580 | Tube, 90~ Connect                           |
| 25 | 484230  | Tube, Outlet (Includes No. 26)              |
| 26 | 49599   | Strainer, Tube                              |
| 27 | 488480  | Screw, SM #8 x 1/2A (7)                     |
| 28 | 996773  | Anticipator, Temperature                    |
| 29 | 475577  | Clip, Temperature Anticipator               |
| 30 | 855930  | Clamp, Tube                                 |
| 31 | 857547  | Tie, Cable                                  |
| 32 | 948090  | Seal, Condenser Top                         |
| 34 | 876034  | Clip, Fan Balancing                         |
| 35 | 484136  | Harness, Wiring                             |
| 36 | 859600  | Seal, Condenser Bottom                      |
| 37 | 1158407 | Bend, Return (2)                            |
| 38 | 1156533 | Bend, Return (2)                            |

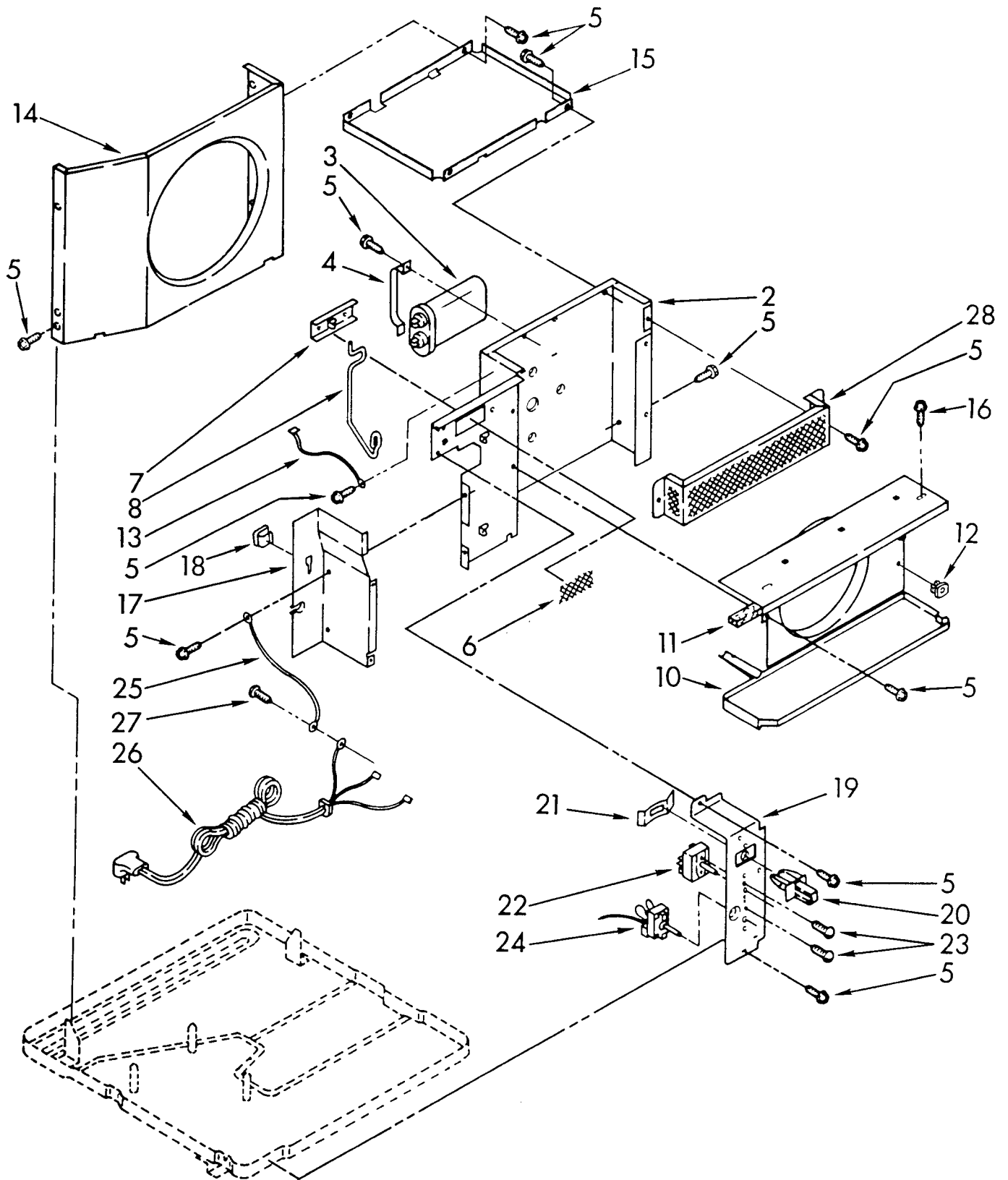
Following Parts Not Illustrated

LITERATURE PARTS

|            |                            |
|------------|----------------------------|
| LIT1159051 | Sheet, Tech                |
| LIT1155974 | Instructions, Installation |
| LIT1155970 | Guide, Use and Care        |
| LIT4316240 | List, Repair Parts         |

# AIR FLOW AND CONTROL PARTS

For Model: X10002W01

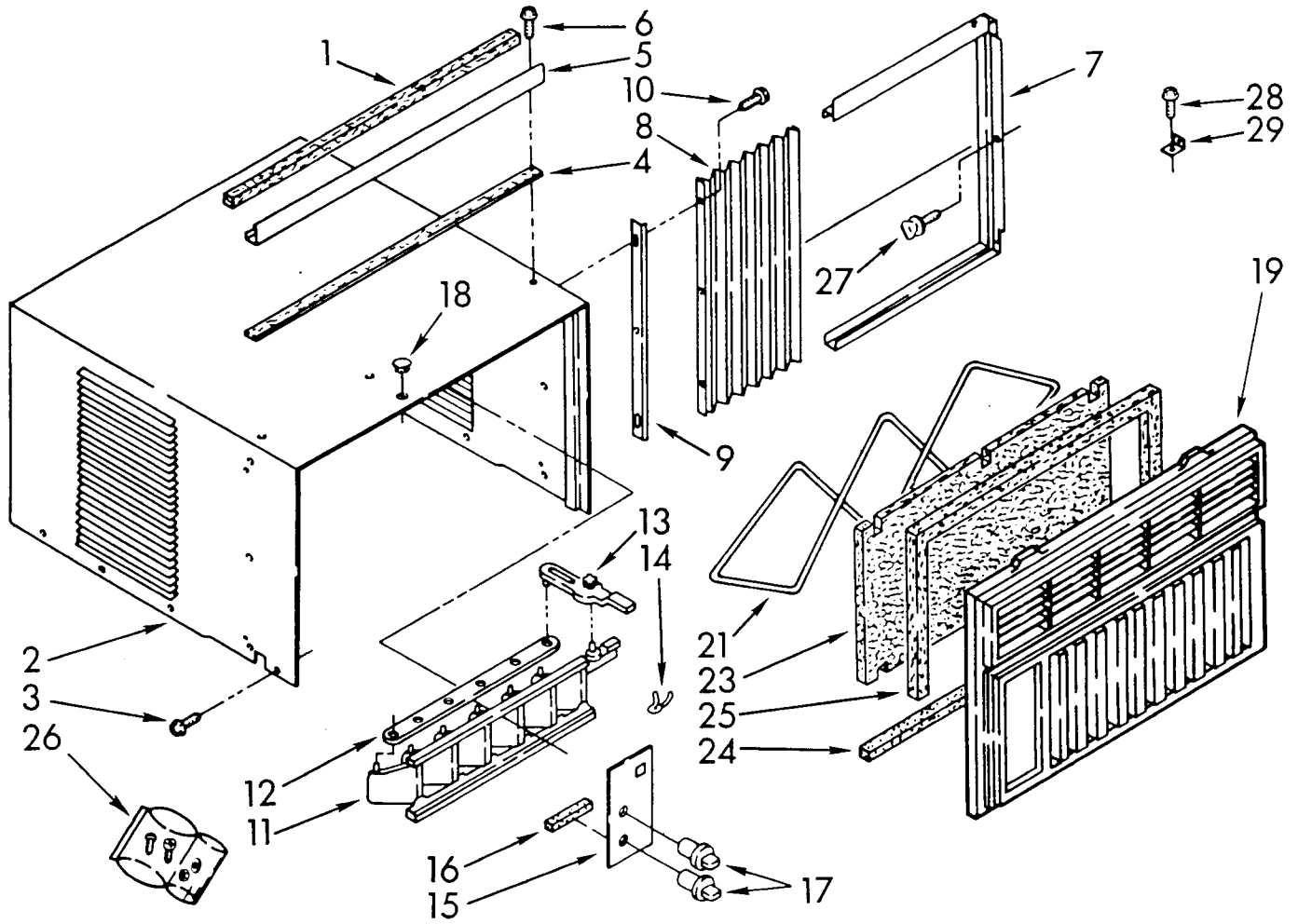


FOR ORDERING INFORMATION REFER TO PARTS PRICE LIST

|    |         |                                     |
|----|---------|-------------------------------------|
| 2  | 1156321 | Wall, Dividing                      |
| 3  | 952384  | Capacitor, Running                  |
| 4  | 856105  | Bracket, Running Capacitor          |
| 5  | 488480  | Screw, S.M.#8 x 1/2                 |
| 6  | 856929  | Screen, Exhaust Door                |
| 7  | 646134  | Door, Exhaust                       |
| 8  | 856042  | Arm, Exhaust Door                   |
| 10 | 948219  | Shroud, Evaporator (Includes No.11) |
| 11 | 948220  | Insulation, Evaporator Cover        |
| 12 | 487808  | Fastener, Snap                      |
| 13 | 857568  | Wire, Capacitor Ground              |
| 14 | 856037  | Shroud, Condenser                   |
| 15 | 1156536 | Support, Unit                       |
| 16 | 487910  | Screw, S.M.#8 x 1/2 (2)             |
| 17 | 994560  | Extension, Dividing Wall            |
| 18 | 644401  | Retainer, Clip                      |
| 19 | 996966  | Panel, Control                      |
| 20 | 953066  | Actuator, Exhaust Door              |
| 21 | 858765  | Retainer, Detent Spring             |
| 22 | 950283  | Switch, Rotary                      |
| 23 | 488734  | Screw, Machine 6-32 x .175 (4)      |
| 24 | 949431  | Control, Temperature                |
| 25 | 856094  | Wire, Ground                        |
| 26 | 646139  | Cable, Appliance                    |
| 27 | 487871  | Screw, ST 8-32 x 3/8                |
| 28 | 856912  | Guard, Evaporator Impeller          |

# CABINET PARTS

For Model: X10002W01

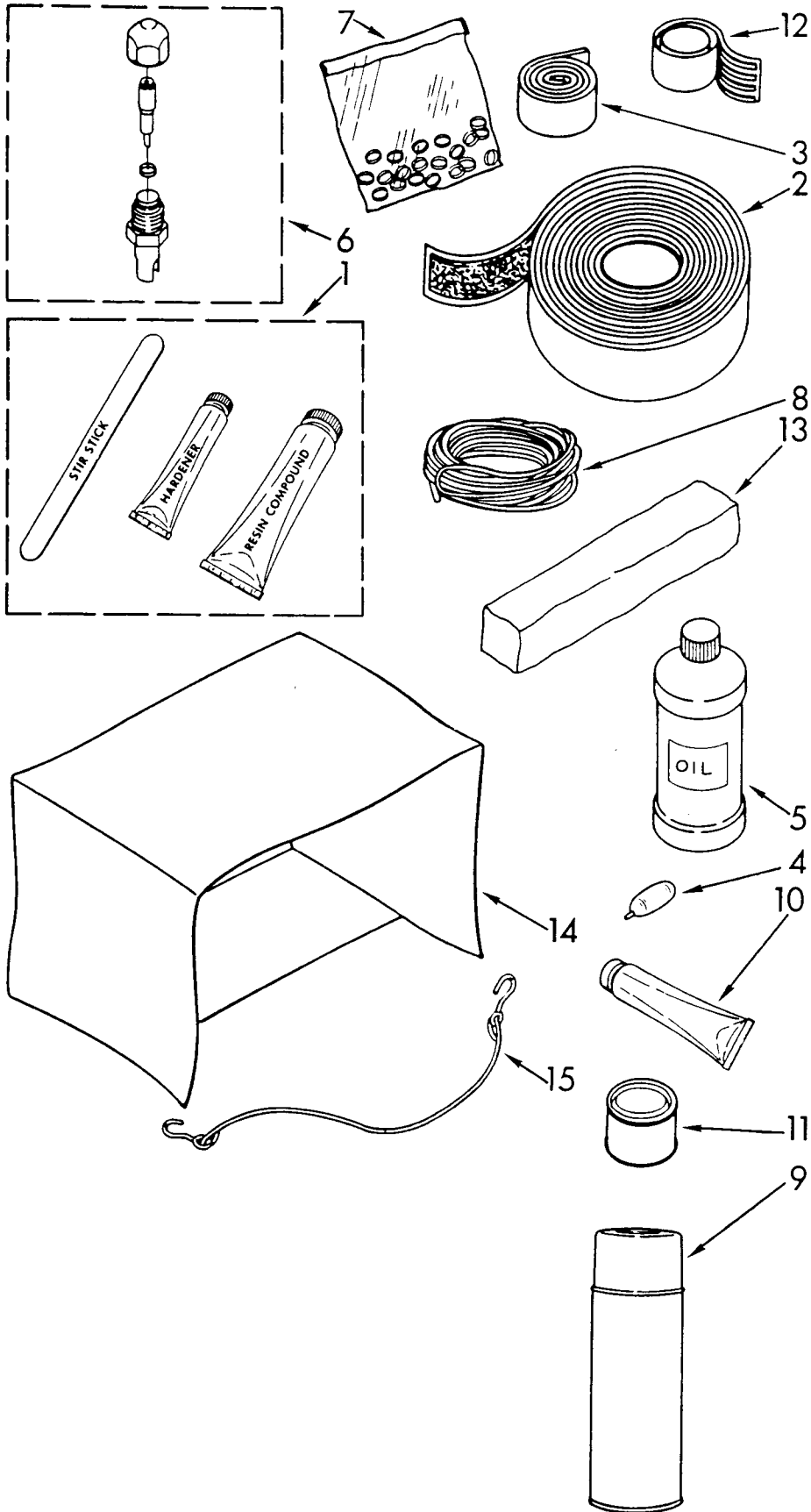


FOR ORDERING INFORMATION REFER TO PARTS PRICE LIST

|    |         |                                     |
|----|---------|-------------------------------------|
| 1  | 469877  | Seal, Meeting Rail                  |
| 2  | 1157124 | Cabinet                             |
| 3  | 488875  | Screw, ST 8-32 x 3/8 (8)            |
| 4  | 856989  | Seal, Strip                         |
| 5  | 993786  | Channel, Top Mounting               |
| 6  | 488720  | Screw, SM #10 x 1/2AB (3)           |
| 7  | 855572  | Housing, Curtain R.S.               |
|    | 855573  | Housing, Curtain L.S.               |
| 8  | 947160  | Curtain (2)                         |
| 9  | 644224  | Retainer, Curtain (2)               |
| 10 | 488730  | Screw, SM #8 x 7/16A (6)            |
| 11 | 641481  | Louver, Vertical                    |
| 12 | 641482  | Link, Vertical Louver               |
| 13 | 645887  | Handle, Vertical Louver             |
| 14 | 641484  | Spring, Detent                      |
| 15 | 1158167 | Plate, Escutcheon                   |
| 16 | 470036  | Spacer, Escutcheon Plate (2)        |
| 17 | 953054  | Knob, Control (2)                   |
| 18 | 1157126 | Cover, Hole                         |
| 19 | 1158196 | Front, Cabinet                      |
| 21 | 646963  | Retainer, Filter                    |
| 23 | 855246  | Filter, Air                         |
| 24 | 852923  | Seal, Cabinet Front                 |
| 25 | 645883  | Seal, Strip (Top & Sides)           |
| 26 | 476180  | Bag, Accessory                      |
| 27 | 475581  | Screw, Thumb (2)                    |
| 28 | 488255  | Screw, Round Head Wood #8 x 3/4 (1) |
| 29 | 644228  | Bracket, Window Lock                |

# OPTIONAL PARTS (NOT INCLUDED)

For Model: X10002W01



FOR ORDERING INFORMATION REFER TO PARTS PRICE LIST

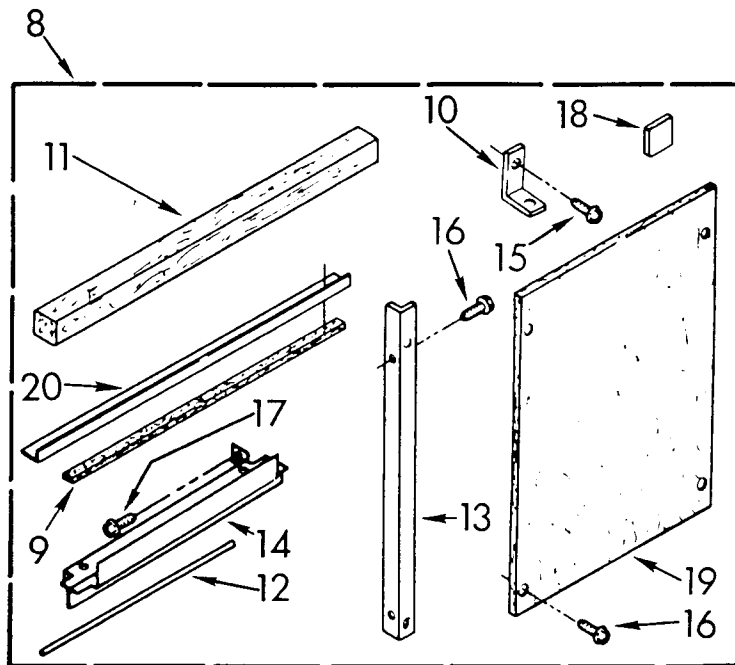
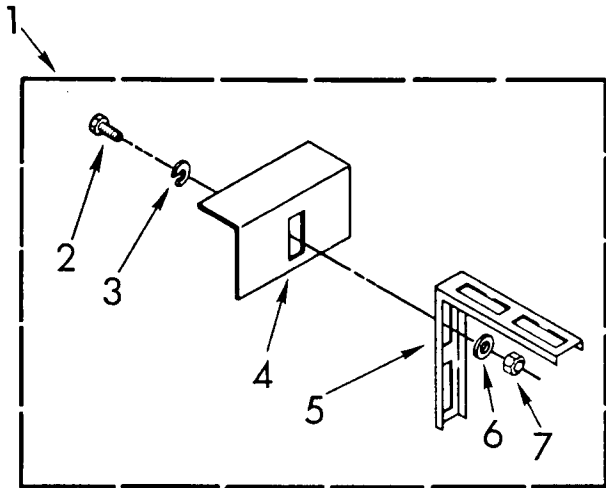


|    |        |                                                   |
|----|--------|---------------------------------------------------|
| 1  | 799833 | Epoxy, Tube (Aluminum Repair)                     |
| 2  | 505168 | Tape, No Drip 30'                                 |
| 3  | 479502 | Tape, Vinyl 36'                                   |
| 4  | 10943  | Oil, Turbine 1 Fl. Oz.                            |
| 5  | 99243  | Oil, Turbine 8 Fl. Oz.                            |
| 6  |        | Valve, Access                                     |
|    | 876764 | 3/16" Tube O.D.                                   |
|    | 978025 | 1/4" Tube O.D.                                    |
|    | 978026 | 5/16" Tube O.D.                                   |
|    | 978027 | 3/8" Tube O.D.                                    |
|    | 978028 | 1/2" Tube O.D.                                    |
|    | 978029 | 5/8" Tube O.D.                                    |
|    | 978030 | 3/4" Tube O.D.                                    |
| 7  | 978865 | Seal, Ring Access Valve (20-Pack)                 |
| 8  |        | Wire, 25'Roll                                     |
|    | 10875  | Blue 16 Ga.                                       |
|    | 242820 | Black 14 Ga.                                      |
|    | 242825 | Red 14 Ga.                                        |
|    | 242826 | White 14 Ga.                                      |
|    | 47261  | Black 12 Ga.                                      |
|    | 299885 | Red 12 Ga.                                        |
|    | 47263  | White 12 Ga.                                      |
| 9  | 813684 | Adhesive, Insulation (24 Oz. Spray)               |
| 10 | 279368 | Adhesive, Insulation (2 Oz. Tube)                 |
| 11 | 485426 | Paint, Touch-up Starlight Gray 1/2 Pint (Lacquer) |
| 12 | 212643 | Sealer, Permagum 4-1" Strips                      |
| 13 | 99344  | Sealer, Permagum 1 Lb. Bar                        |
| 14 |        | Cover, Winter                                     |
|    | 484066 | 28 x 19 x 31"                                     |
|    | 484067 | 19 x 12 x 14"                                     |
|    | 484069 | 27 x 19 x 6 to 27"                                |
|    | 484184 | 22 x 15 x 3 to 18"                                |
| 15 | 813610 | Retainer, Cord (Winter Cover)                     |

# INSTALLATION PARTS

For Model: X10002W01

The Accessory Installation Kits illustrated below may or may not be included with your Air Conditioner. They have been made available only as an accessory to help you install the Air Conditioner where special circumstances may require them. If one of these accessory kits has been installed with your Air Conditioner and repair parts are required at some later date, you may select the correct part number from this listing.



FOR ORDERING INFORMATION REFER TO PARTS PRICE LIST

|    |         |                                            |
|----|---------|--------------------------------------------|
| 1  | 485678  | Kit, Outside Sill (For Additional Support) |
| 2  | 488750  | Bolt, 1/4-20 x 3/4 (6)                     |
| 3  | 488808  | Washer, Flat (6)                           |
| 4  | 645515  | Bracket, Sill (2)                          |
| 5  | 485466  | Bracket, Rail (2)                          |
| 6  | 486009  | Washer, Lock (6)                           |
| 7  | 486035  | Nut, 1/4-20 (6)                            |
| 8  | 1155851 | Kit, Economy Installation                  |
| 9  | 855266  | Seal, Strip                                |
| 10 | 644228  | Bracket, Window Lock                       |
| 11 | 469877  | Seal, Meeting Rail                         |
| 12 | 212643  | Sealer, Permagum                           |
| 13 | 646233  | Angle, Side Mounting (2)                   |
| 14 |         | Bracket, Top Mounting                      |
|    | 645562  | Right Side                                 |
|    | 645563  | Left Side                                  |
| 15 | 488255  | Screw, Wood #8 x 3/4 (6)                   |
| 16 | 488481  | Screw, S.M. #10 x 3/8 (6)                  |
| 17 | 488017  | Screw, S.M. #8 x 3/8 (6)                   |
| 18 | 995274  | Spacer, Filler Board (2)                   |
| 19 | 646237  | Board, Filler (2)                          |
| 20 | 646232  | Channel, Top                               |

Following Parts Not Illustrated

LITERATURE PARTS

|            |                                                   |
|------------|---------------------------------------------------|
| LIT485706  | Instructions, Installation (Outside Sill Kit)     |
| LIT1155124 | Instructions, Installation (Economy Mounting Kit) |