

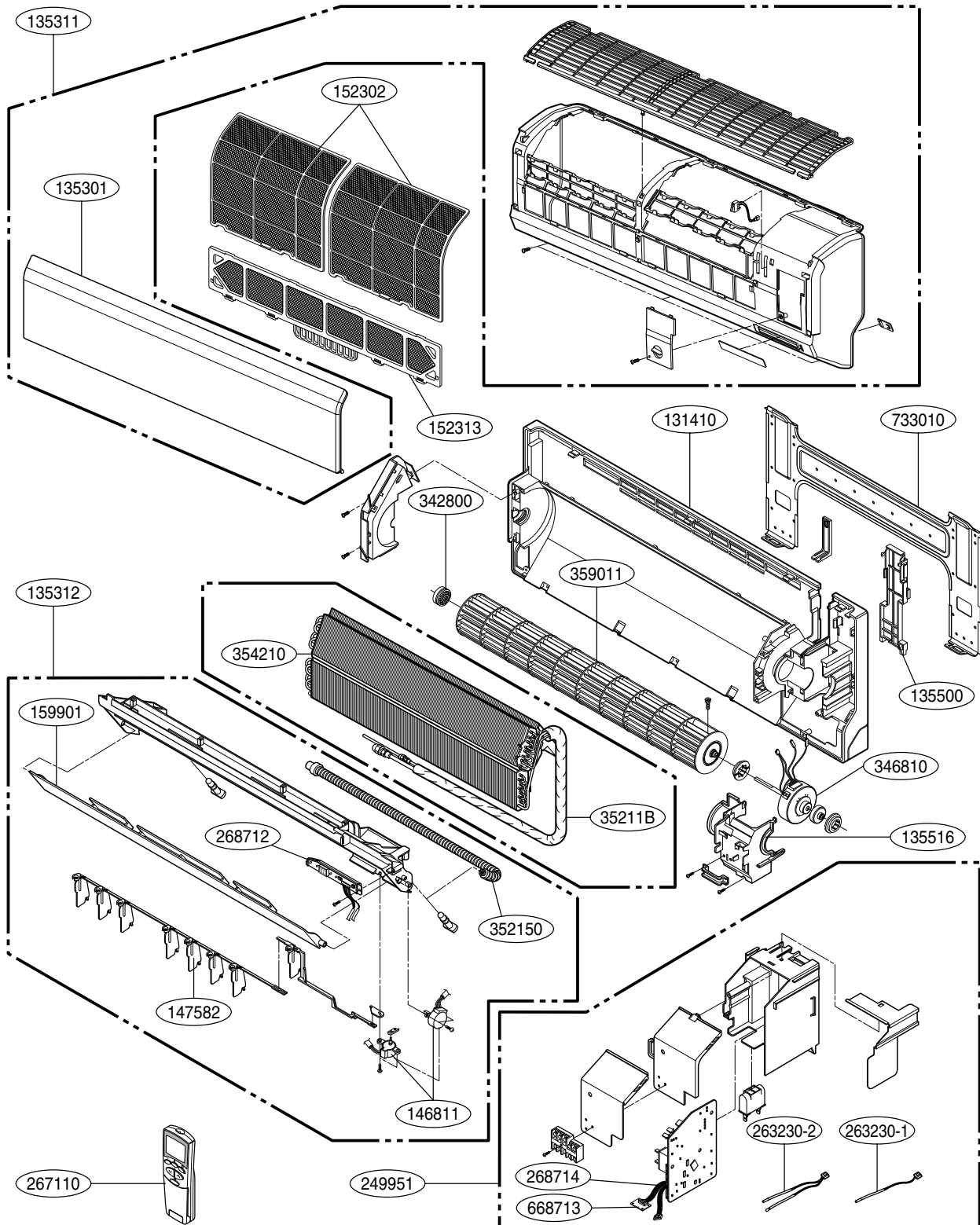
HEAT CONTROLLER, INC.

REPLACEMENT
PARTS LIST

**DMC/DMH Series
Tri Zone Ductless
Mini-Split Systems
A/C and Heat Pumps**

Exploded View & Replacement Parts List

Indoor Unit

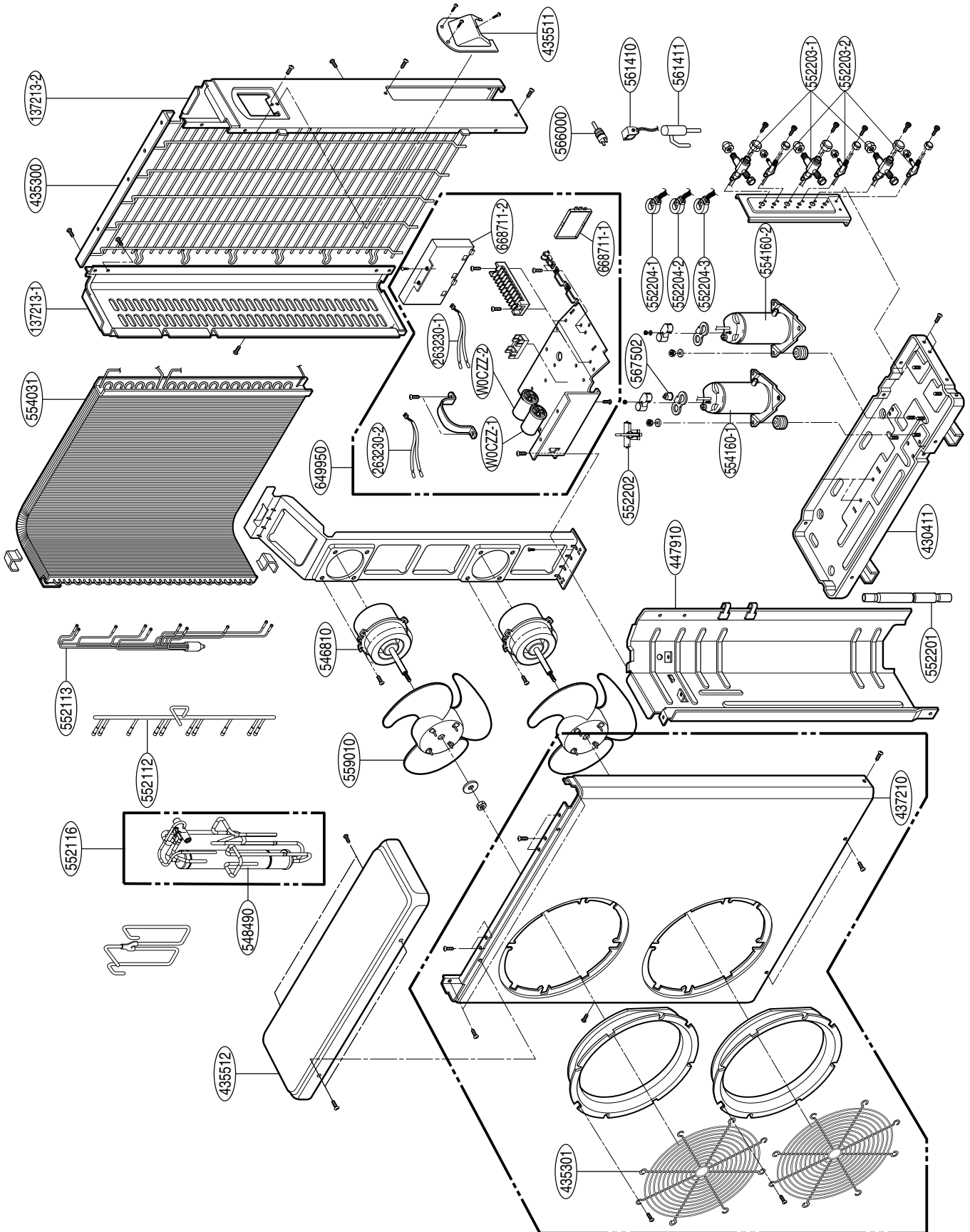


Exploded View & Replacement Parts List

LOCATION No.	DESCRIPTION	PART No.		REMARKS
		DMC36TB-1	DMH36TB-1	
131410	CHASSIS ASSEMBLY	3141A20034A	3141A20034A	
135311	GRILLE ASSEMBLY,DISCHARGE(INDOOR)	3531A10362M	3531A10362M	
135312	GRILLE ASSEMBLY,FRONT(INDOOR)	AEB30610001	AEB30610002	
135314	GRILLE,INLET	3530A10297A	3530A10297A	
135500	COVER	3550A30315A	3550A30315A	
135516	COVER ASSEMBLY,MOTOR	3551A20156B	3551A20156B	
146811	MOTOR ASSEMBLY,DC,STEPPING	4681A20055A	4681A20055A	
147582	LOUVER,VERTICAL	4758A30058A	4758A30058A	
152302	FILTER,AIR	5230A20064A	5230A20064A	
152313	FILTER ASSEMBLY,DEODORIZER	5231A20040K	5231A20040K	
159901	LOUVER,HORIZONTAL	5990A20068A	5990A20068A	
263230-1	THERMISTOR,NTC	6323AQ3226T	6323AQ3226T	
263230-2	THERMISTOR,NTC	6323A20004A	6323A20004A	
267110	REMOTE CONTROLLER ASSEMBLY	6711A20128K	6711A20128L	
268711	PCB ASSEMBLY	6871A20989C	6871A20989B	
268712	PCB ASSEMBLY,DISPLAY	6871A20682A	6871A20682A	
268714	PCB ASSEMBLY,MAIN	6871A20782A	6871A20782A	
342800	BEARING	4280A20004B	4280A20004B	
346810	MOTOR ASSEMBLY,AC,INDOOR	4681AR2295L	4681AR2295L	
35211B	TUBE ASSEMBLY,TUBING	5211A15008A	5211A15008A	
352150	HOSE ASSEMBLY,DRAIN	5251A20011G	5251A20011G	
354210	EVAPORATOR ASSEMBLY,FIRST	ADL30058601	ADL30058601	
359011	FAN ASSEMBLY,CROSS FLOW	5901A20017H	5901A20017H	
733010	PLATE ASSEMBLY,INSTALLATION	3301A20020A	3301A20020A	

Outdoor Unit

DMC36TB-1, DMH36TB-1



Parts List

LOCATION No.	DESCRIPTION	PART No.		REMARKS
		DMC36TB-1	DMH36TB-1	
137213-1	PANEL ASSEMBLY,SIDE	3721A10110A	3721A10110A	
137213-2	PANEL ASSEMBLY,SIDE	3721A10111C	3721A10111C	
263230-1	THERMISTOR,NTC	6323A20028A	6323A20028A	
263230-2	THERMISTOR,NTC	6323A20026A	6323A20026A	
430411	BASE ASSEMBLY,OUTDOOR	3041AP2741H	3041AP2741H	
435300	GRILLE,REAR	3530A10176B	3530A10176B	
435301	GRILLE,DISCHARGE	3530A20006G	3530A20006G	
435511	COVER ASSEMBLY,CONTROL(OUTDOOR)	3551A10044H	3551A10044G	
435512	COVER ASSEMBLY,TOP(OUTDOOR)	3H03266H	3H03266H	
437210	PANEL ASSEMBLY,FRONT(OUTDOOR)	3721A10109C	3721A10109C	
447910	BARRIER ASSEMBLY,OUTDOOR	4791A10019B	4791A10019B	
546810	MOTOR,UNCLASSIFIED	4681AR1392X	4681AR1392X	
548490	ACCUMULATOR	4848A20006L	4848A20006L	
552112	TUBE ASSEMBLY,CONDENSER(IN)	5211A11010A	5211A11010A	
552113	TUBE ASSEMBLY,CONDENSER(OUT)	5211A12001A	5211A12001A	
552116	TUBE ASSEMBLY,REVERSE	AJR30839801	AJR30839801	
552201	VALVE,CHECK	5220A30004A	5220A30004A	
552202	VALVE,REVERSE	5220AR3228E	5220AR3228E	
552203-1	VALVE,SERVICE	5220A20001K	5220A20001K	
552203-2	VALVE,SERVICE	2H02479J	2H02479J	
552204-1	DRAWING,ASSEMBLY	6877A20050A	6877A20050A	
552204-2	DRAWING,ASSEMBLY	6877A20050B	6877A20050B	
552204-3	DRAWING,ASSEMBLY	6877A20050C	6877A20050C	
554031	CONDENSER ASSEMBLY,BENDING	5403A20168C	5403A20168A	
554160-1	COMPRESSOR SET,KOREA	2520UGHK2AA	2520UGHK2AA	
554160-2	COMPRESSOR SET,KOREA	TBZ30111701	TBZ30111701	
559010	FAN ASSEMBLY,PROPELLER	5901A10033A	5901A10033A	
561410	SOLENOID	-	3A02028Z	
561411	VALVE,EXPANSION BODY	6140A90001K	6140A90001K	
566000	SWITCH,PRESSURE	6600L000013	6600L000013	
649950	CASE ASSEMBLY,CONTROL(OUTDOOR)	4995A00002H	4995A00002H	
668711-1	PCB ASSEMBLY,MAIN	6871A20500B	6871A20500B	
668711-2	PCB ASSEMBLY	6871A20479E	6871A20479E	
W0CZZ-1	CAPACITOR,FILM,BOX	0CZZA20007Q	0CZZA20007Q	
W0CZZ-2	CAPACITOR,FILM,BOX	2H01451S	2H01451S	

**Design, material, performance data and components
subject to change without notice.**

HEAT CONTROLLER, INC.

1900 Wellworth Ave., Jackson, Michigan 49203 • Ph. 517-787-2100 • Fax 517-787-9341

THE QUALITY LEADER IN AIR CONDITIONING

www.heatcontroller.com