

This Owner's Manual is provided and hosted by [Appliance Factory Parts](#).



# Thermos 4618239 Owner's Manual

[Shop genuine replacement parts for Thermos 4618239](#)

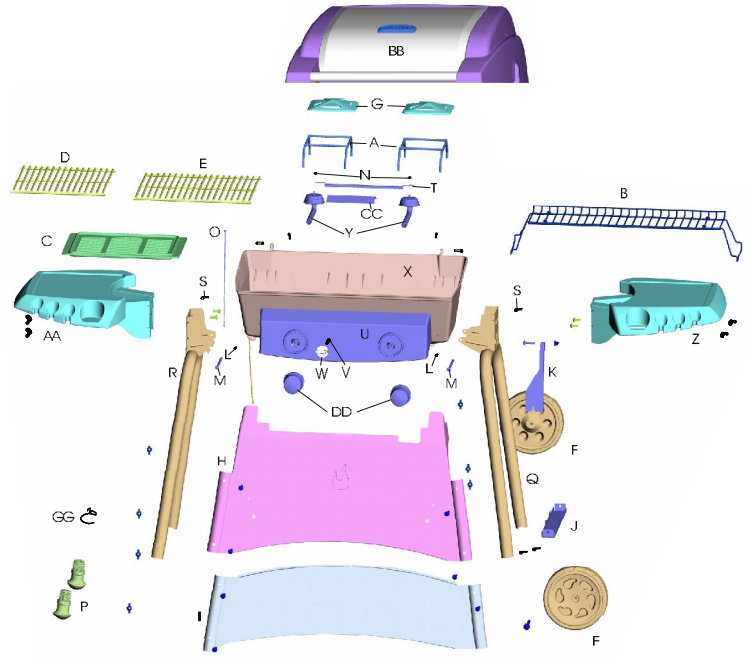


[Find Your Thermos Grill Parts - Select From 1975 Models](#)

----- Manual continues below -----

**Parts List - Model 4618239**

| Key Qty. | Description | Part #                 | Key Qty. | Description | Part # |                      |         |
|----------|-------------|------------------------|----------|-------------|--------|----------------------|---------|
| A        | 2           | Tent Frame             | 4151014  | DD          | 2      | Control Knob         | 4154507 |
| B        | 1           | Warming Rack           | 4152043  | EE          | 1      | Hardware, Cart Assy. | 4254007 |
| C        | 1           | Griddle                | 4152038  | FF          | 1      | Hardware, Shelf      | 4254010 |
| D        | 1           | Cooking Grid, 12"      | 4152045  | GG          | 1      | Grease Clip          | 5156607 |
| E        | 1           | Cooking Grid, 15"      | 4152046  |             |        |                      |         |
| F        | 2           | Wheel                  | 4156657  |             |        |                      |         |
| G        | 2           | Burner Tent            | 4500226  |             |        |                      |         |
| H        | 1           | Upper Panel            | 4502072  |             |        |                      |         |
| I        | 1           | Lower Panel            | 4502073  |             |        |                      |         |
| J        | 1           | Tank Support           | 4502058  |             |        |                      |         |
| K        | 1           | Tank Retainer          | 4502113  |             |        |                      |         |
| L        | 2           | 10x1/2" Screw, Selftap | 4080043  |             |        |                      |         |
| M        | 2           | Pivot Pin              | 4080066  |             |        |                      |         |
| N        | 2           | 3/16 Pal Nut           | 4153096  |             |        |                      |         |
| O        | 1           | Ignitor Wire           | 4153184  |             |        |                      |         |
| P        | 2           | Leg Extender           | 4154516  |             |        |                      |         |
| Q        | 1           | Right Leg              | 4502158  |             |        |                      |         |
| R        | 1           | Left Leg               | 4502159  |             |        |                      |         |
| S        | 2           | 3/4" Hitch Pin         | 4156515  |             |        |                      |         |
| T        | 1           | Carry-over Tube        | 4500227  |             |        |                      |         |
| U        | 1           | Console Assembly       | 4530033  |             |        |                      |         |
| V        | 1           | Rotary Ignitor         | 4153187  |             |        |                      |         |
| W        | 1           | Ignitor Knob           | 4154208  |             |        |                      |         |
| X        | 1           | Grill Bottom           | 4580316  |             |        |                      |         |
| Y        | 2           | Burner                 | 5068016  |             |        |                      |         |
| Z        | 1           | Right Shelf Assembly   | 4520011  |             |        |                      |         |
| AA       | 1           | Left Shelf Assembly    | 4520012  |             |        |                      |         |
| BB       | 1           | Grill Top              | 4570033  |             |        |                      |         |
| CC       | 1           | Shield                 | 5501038  |             |        |                      |         |



**M**  
**TO**  
**REC**  
**B**  
 THE GR  
**BF**  
**LUNCH**