

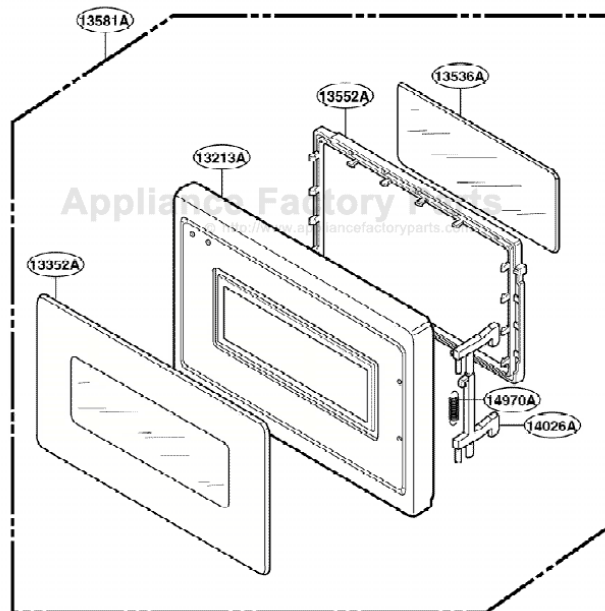
This Owner's Manual is provided and hosted by [Appliance Factory Parts](http://ApplianceFactoryParts.com).



GOLDSTAR GSC-6001 Owner's Manual

[Shop genuine replacement parts for GOLDSTAR
GSC-6001](#)

DOOR PARTS



[Find Your GOLDSTAR Microwave Parts - Select From 234 Models](#)

----- Manual continues below -----



GoldStar

Website <http://biz.lgservice.com>

MICROWAVE OVEN SERVICE MANUAL

MODEL: GSC-6001

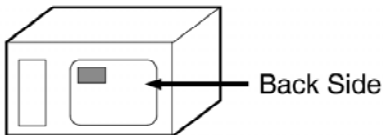
CAUTION

BEFORE SERVICING THE UNIT, READ THE SAFETY PRECAUTIONS IN THIS MANUAL.

P/NO : 3828W5S0126

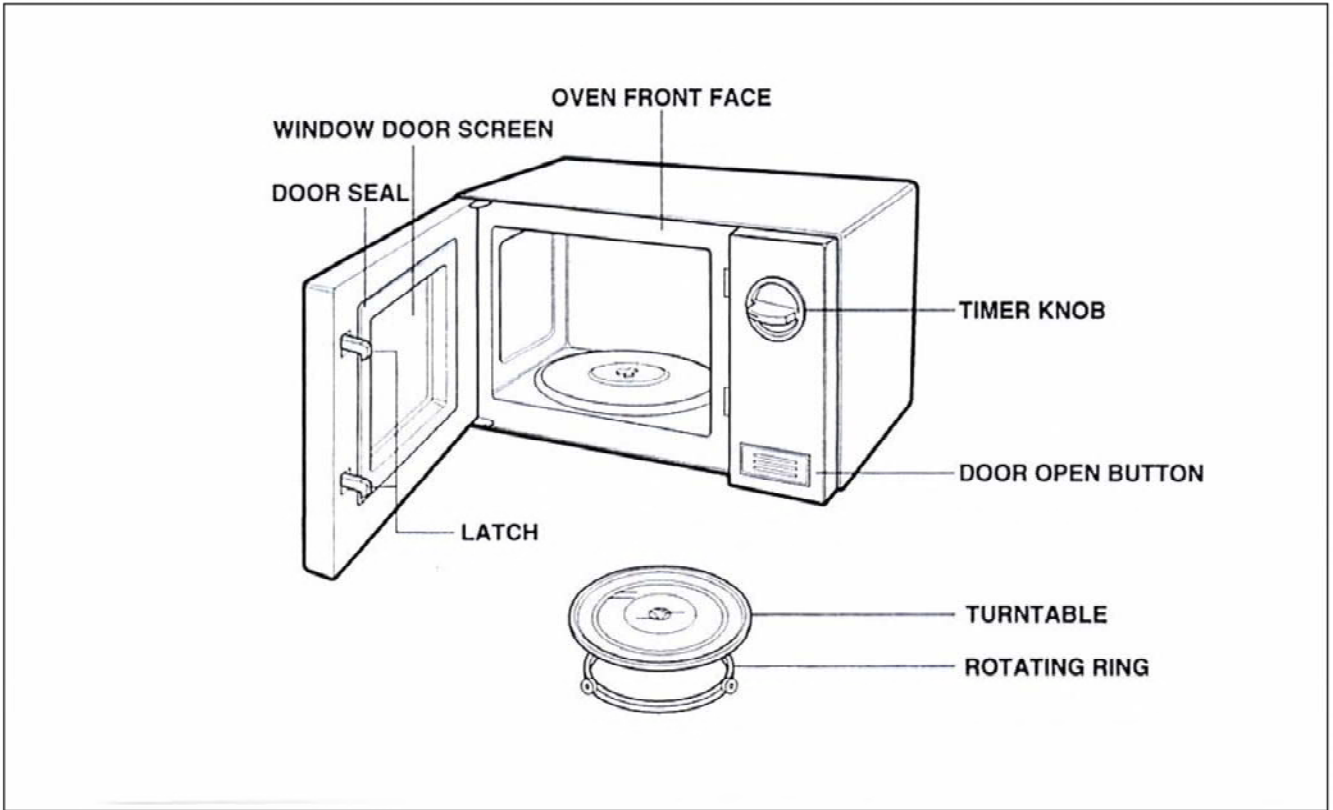
April, 1996
Printed in Korea

SPECIFICATIONS

ITEM	DESCRIPTION
MODEL	GSC-6001
Power Requirement	120V AC 60 Hz 910W (8.5A) Single phase, 3 wire ground
Power Output	600W full microwave power (IEC60705)
Microwave Frequency	2450 MHz
Magnetron	2M214 - 39F
Timer	15 min
Outside Dimensions	18 ¹ / ₂ (W) x 9 ³ / ₈ (H) x 12 ⁵ / ₈ (D)mm
Cavity Dimensions	11 ¹ / ₄ (W) x 7 ¹ / ₄ (H) x 12 ³ / ₈ (D)mm
Net Weight	25 lbs (approx.)
Shipping weight	28 lbs (approx.)
Control Complement	Mechanical Rotary System Full Power Cooking
Rating Label Location	 <p>The diagram shows a 3D perspective view of a rectangular microwave oven. An arrow points from the text 'Back Side' to the back panel of the oven, which features a small rectangular label area.</p>
Accessories	Owner's manual & cooking guided Glass turntable Rotating ring
<p>This microwave oven is designed for household use only. It is not recommended for commercial purposes.</p>	

OPERATING INSTRUCTIONS

Features

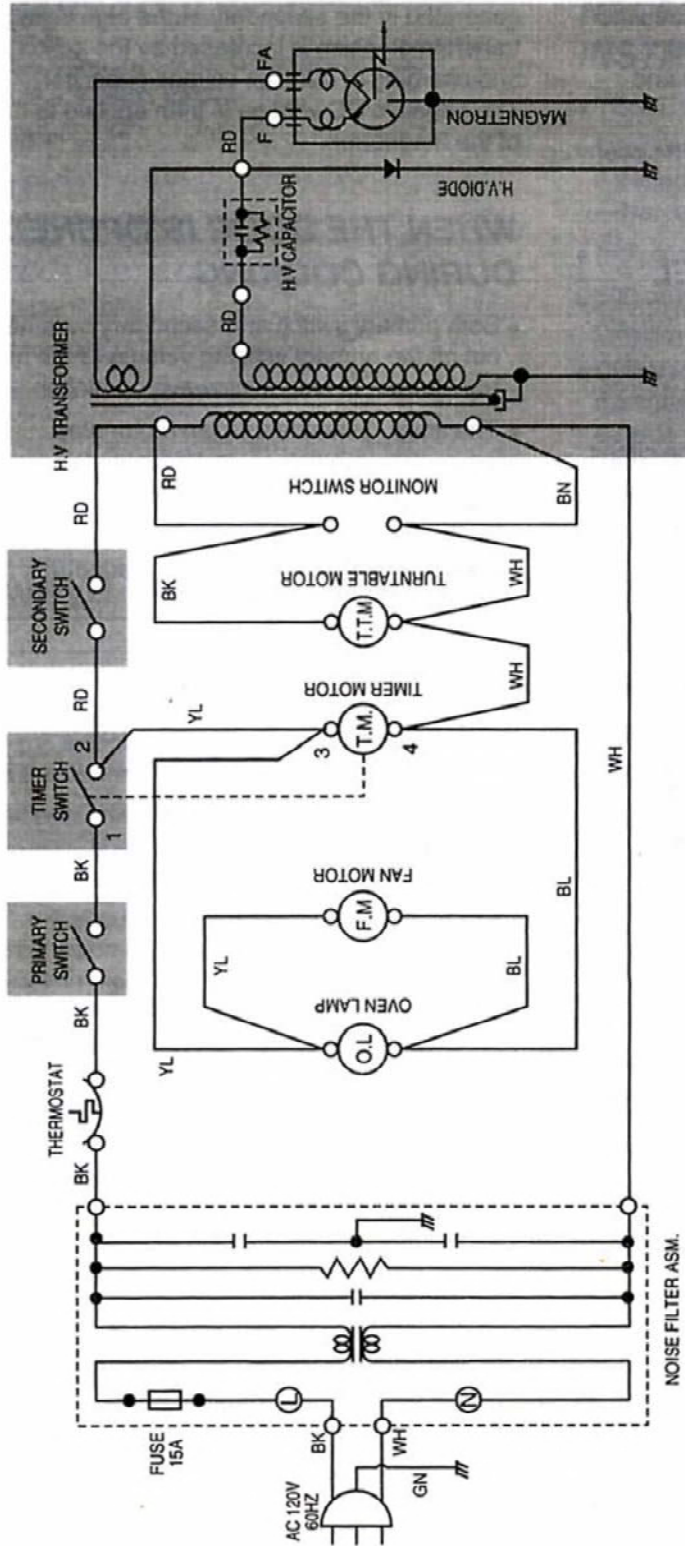


SCHEMATIC DIAGRAM

MICROWAVE OVEN

GSC - 6001

April., 1996



NOTE : DOOR IS OPENED

BN : BROWN

BL : BLUE

YL : YELLOW

PK : PINK

RD : RED

BK : BLACK

WH : WHITE

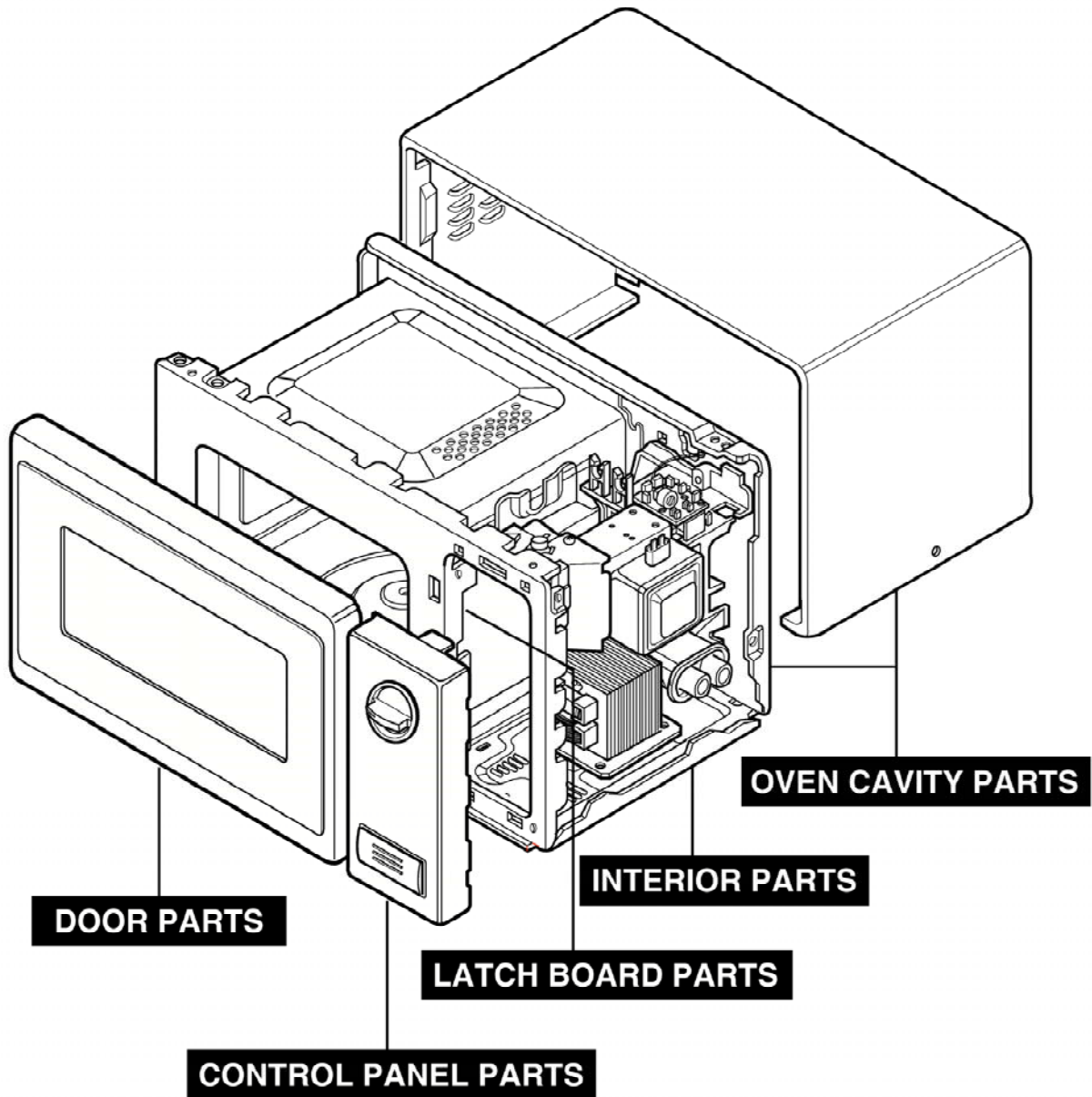
GN : GREEN

IMPORTANT SAFETY NOTE: THE SHADED AREA ON THIS SCHEMATIC DIAGRAM INCORPORATES SPECIAL FEATURES IMPORTANT FOR PROTECTION FROM MICROWAVE RADIATION, FIRE AND ELECTRICAL SHOCK HAZARDS. WHEN SERVICING IT IS ESSENTIAL THAT ONLY MANUFACTURERS SPECIFIED PARTS BE USED FOR THE CRITICAL COMPONENTS IN THE SHADED AREAS OF THE SCHEMATIC DIAGRAM.

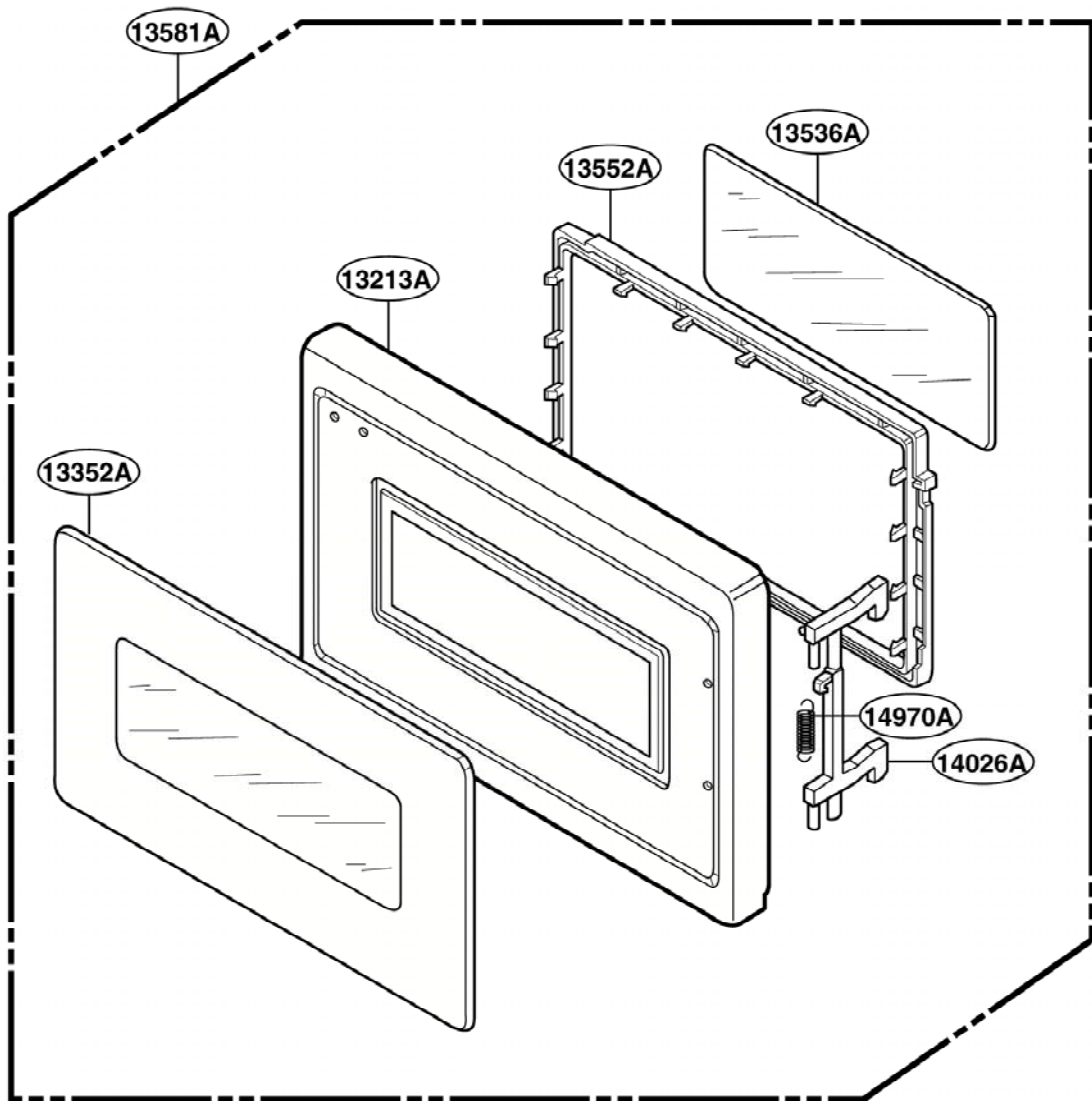
NOTICE: SINCE THIS IS BASIC SCHEMATIC DIAGRAM. THE VALUE OF COMPONENTS AND SOME PARTIAL CONNECTION ARE SUBJECT TO CHANGE FOR IMPROVEMENT.

EXPLODED VIEW

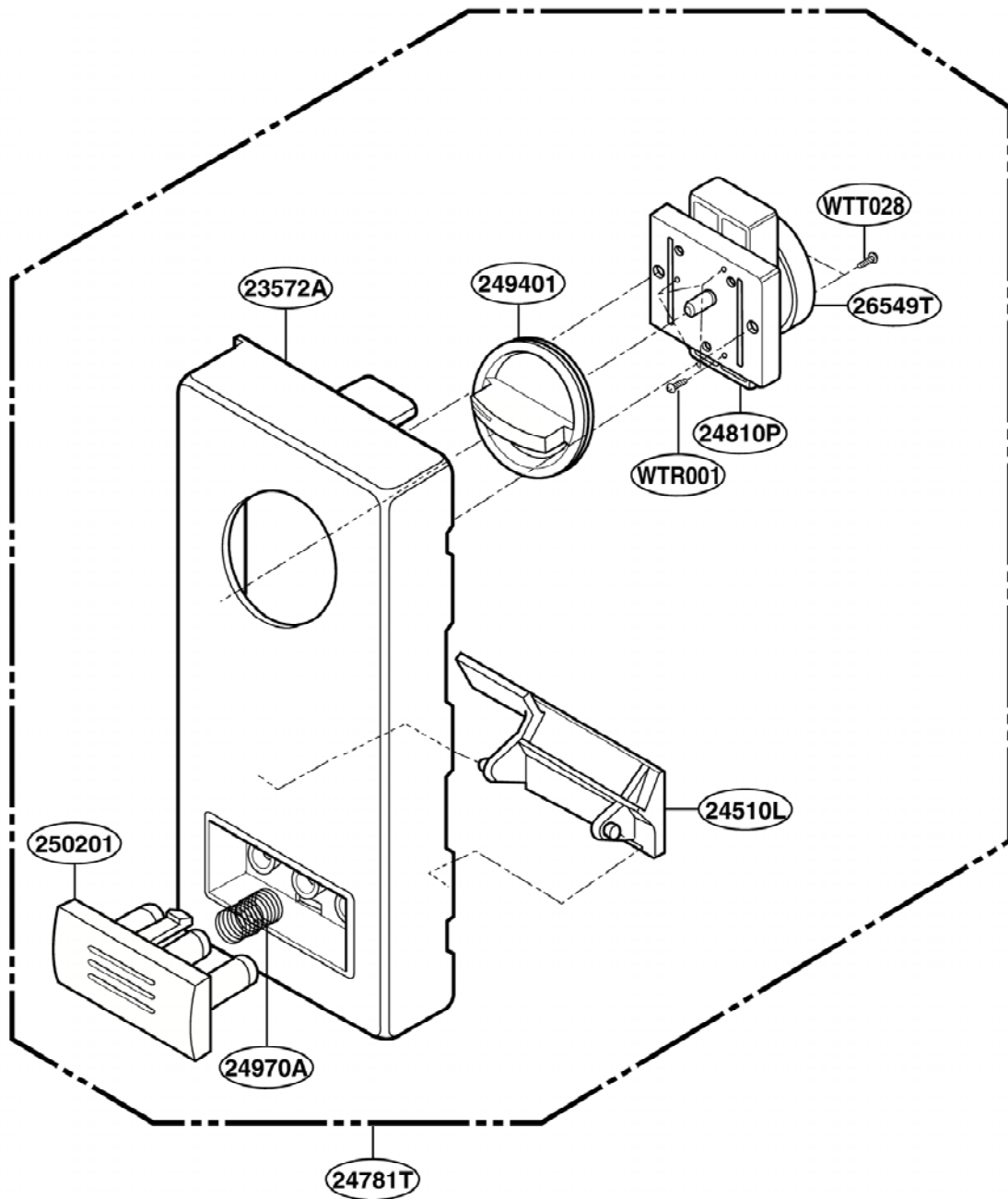
INTRODUCTION



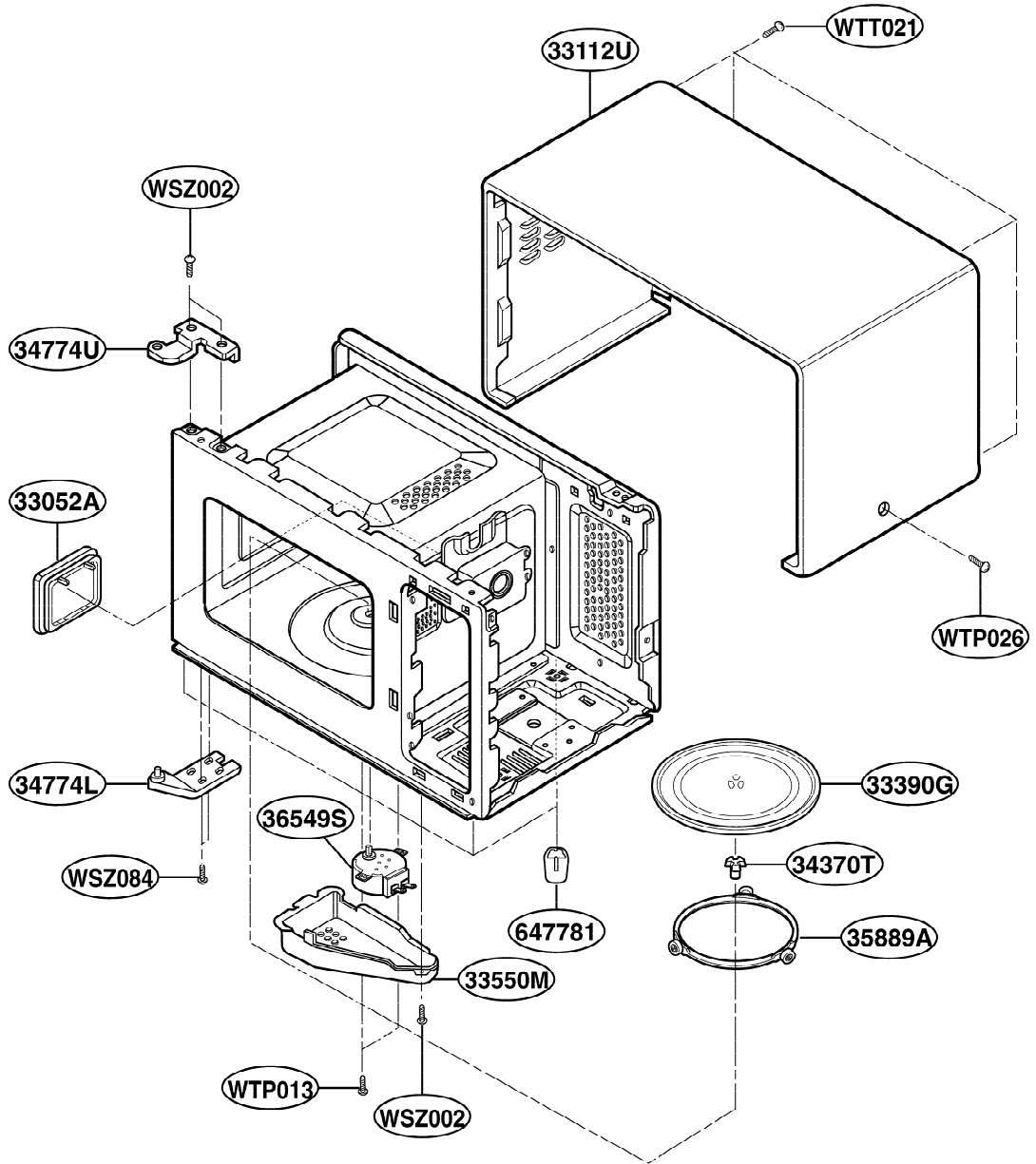
DOOR PARTS



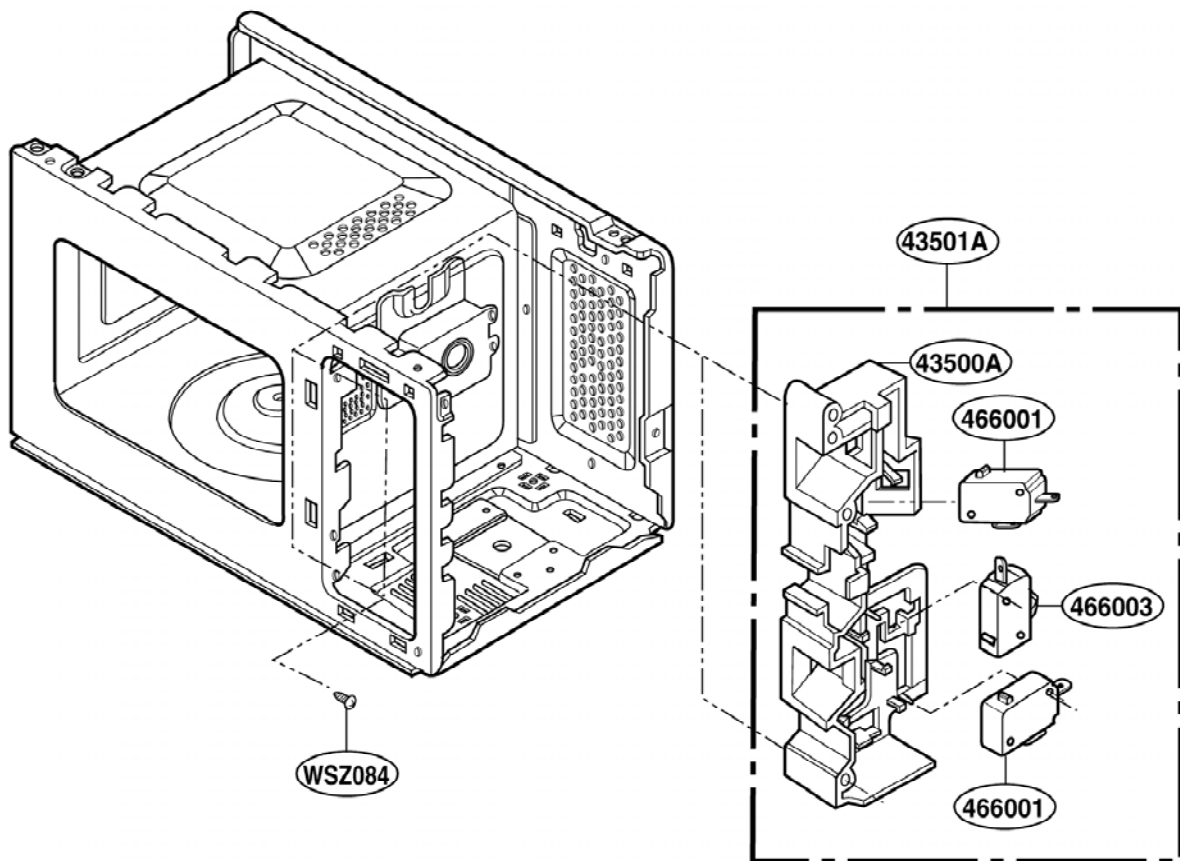
CONTROL PANEL PARTS



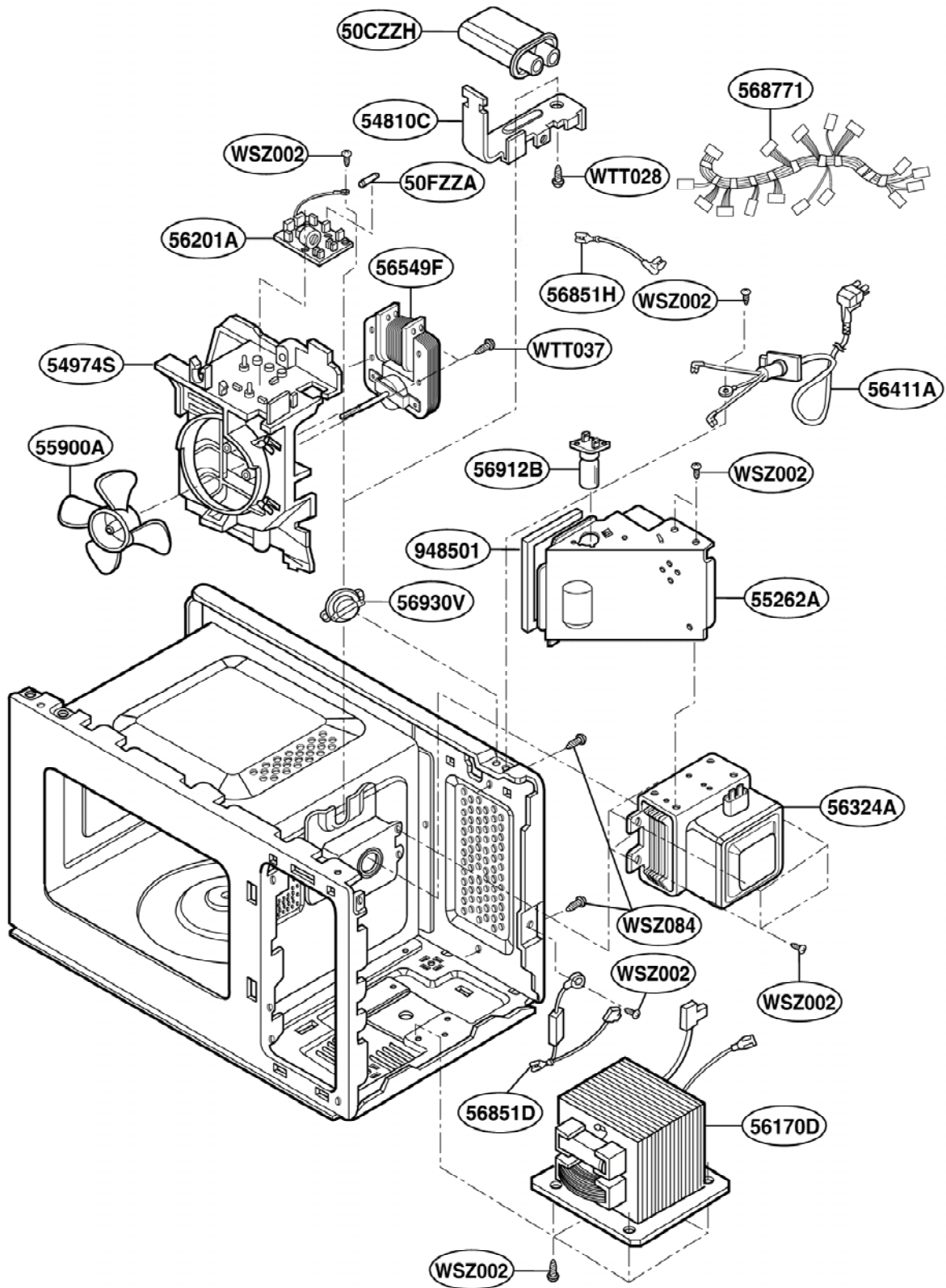
OVEN CAVITY PARTS



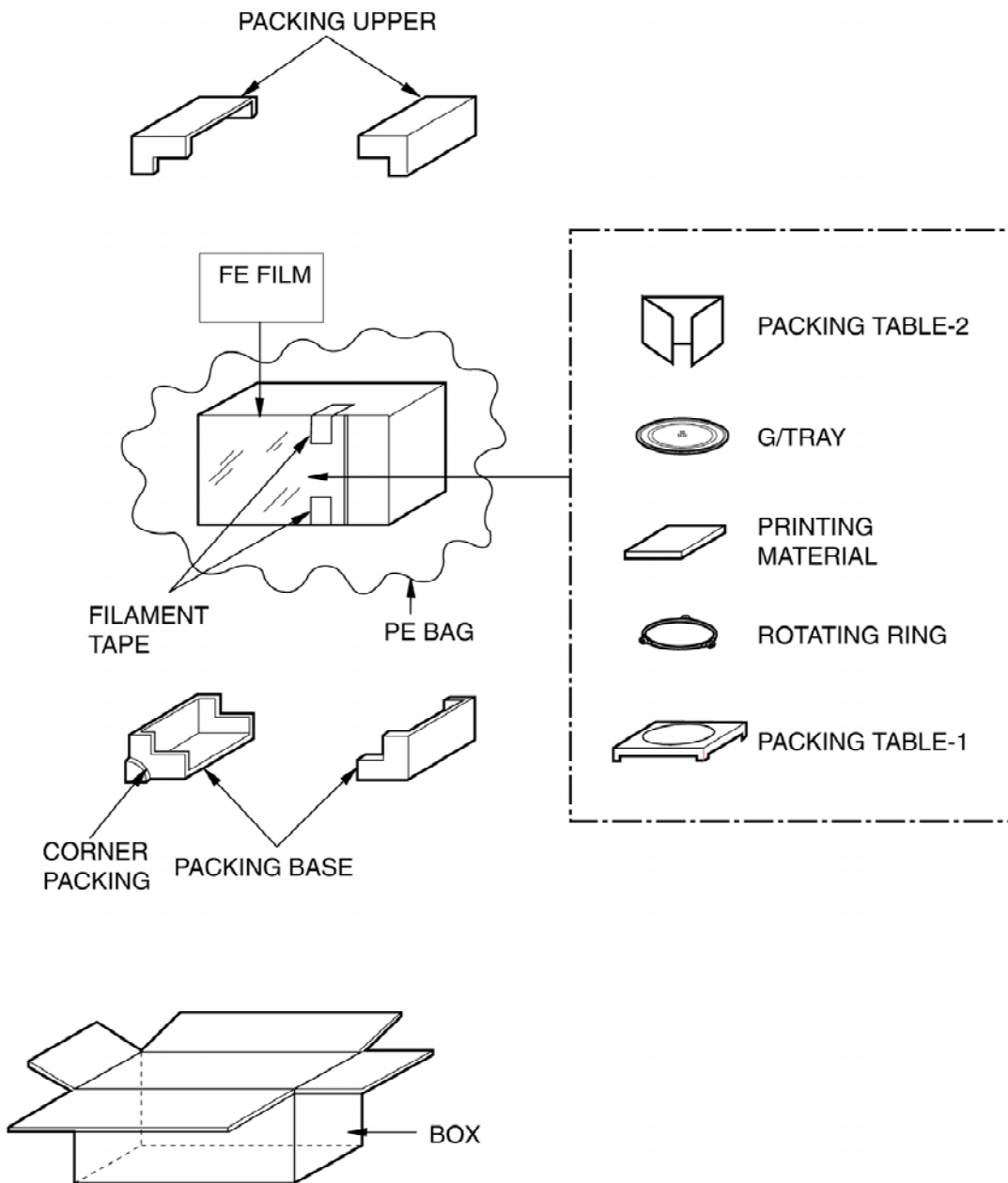
LATCH BOARD PARTS



INTERIOR PARTS



PACKING AND ACCESSORIES



REPLACEMENT PARTS LIST

Rev.1 Nov 18, 2005

LOC. NO.	PART NO.	DESCRIPTION	SVC	ALTERNATE
*01	3828W5A0118	MANUAL,OWNERS	R	
*02	3828W5S0126	MANUAL,SERVICE	R	
*10	3890W2ZC09E	BOX	R	
13213A	3213WRA001B	DOOR FRAME ASSEMBLY	R	
13352A	3352W1A044F	FRONT SCREEN	R	
13536A	3536WRA001A	SEAL TAPE	R	
13552A	3552WRA001A	CHOKE COVER	R	
13581A	3581W1A062Y	DOOR ASSEMBLY	R	
14026A	4026WRA001A	LATCH	R	
14970A	4970WRA001A	SPRING	R	
23572A	3572W1A021D	PANEL,CONTROL	R	
24510L	4510WRA001A	LEVER	R	
24781T	4781W1T007D	CONTROLLER ASSEMBLY,MECHANICAL	R	
24810P	4B74662A	BRACKET,MISC	R	
249401	4940WRG001E	KNOB	R	
24970A	4B72023A	SPRING	R	
250201	5020WRG002B	BUTTON	R	
26549T	2B71446B	MOTOR(CIRC),TIMER	R	
33052A	3052W3A007A	CANOPY,RESIN	R	
33112U	3112WRU001Q	OUT CASE,U-BENDING	R	
33390G	2B71852A	TRAY,GLASS	R	
33550M	3550WRA001A	BRACKET,MOTOR	R	
34370T	4370WRT001C	SHAFT,TURN TABLE	R	
34774L	4775WRP001A	HINGE ASSEMBLY	R	
34774U	4774WRP001A	BRACKET,HINGE	R	
35889A	5889W2A005B	ROTATING RING ASSEMBLY	R	
36549S	6549W2S002E	MOTOR(CIRC),SYNCHRONOUS	R	2B72754E
36549S	6549W2S002E	MOTOR(CIRC),SYNCHRONOUS	R	6549WRS001G
43500A	3500WRA001A	BOARD,LATCH	R	
43501A	3501WRA001E	BOARD ASSEMBLY,LATCH	R	
466001	3B73362F	SWITCH,MICRO	R	3B73362E
466001	3B73362F	SWITCH,MICRO	R	6600W1K004C
466003	3B73361E	SWITCH,MICRO	R	3B73361D
466003	3B73361E	SWITCH,MICRO	R	6600W1K004B
50CZZH	0CZZW1H002A	CAPACITOR,DRAWING[HIGH VOLTAGE]	R	
50FZZA	3B70856G	FUSE,DRAWING	R	3B74133F
54810C	4810W4C003A	BRACKET,CAPACITOR	R	
54974S	4974W1S010A	GUIDE,SUCTION	R	
55262A	5262W2A009A	DUCT	R	
55900A	2B72125A	FAN	R	
56170D	6010WRH005A	TRANSFORMER,HIGH VOLTAGE	R	6010WRH006A
56170D	6010WRH005A	TRANSFORMER,HIGH VOLTAGE	R	6010WRH007A
56201A	2B72130F	FILTER ASSEMBLY(CIRC)	R	
56324A	2B71732B	MAGNETRON	R	
56411A	6411W2A002A	POWER CORD ASSEMBLY	R	
56549F	2B73670B	MOTOR(CIRC),FAN	R	2B73642B
56851D	3B73348D	CABLE ASSEMBLY	R	
56851H	3B73347A	CABLE,HIGH VOLTAGE	R	

R : SERVICE PARTS

LOC. NO.	PART NO.	DESCRIPTION	SVC	ALTERNATE
568771	6877W1T189A	HARNESS	R	
56912B	6912W3B002G	LAMP,DRAWING	R	6912W3B002L
56930V	6930WRT001C	HARNESS	R	6930WRT002C
647781	4778WRA001A	LEG	R	
948501	3B72244J	CUSHION	R	
WSZ002	1SBF0402418	SCREW TAP TITE(S),BINDING HEAD	R	
WSZ084	4B70188B	SCREW,DRAWING	R	
WTP013	1TPL0402418	SCREW TAPPING,PAN HEAD	R	
WTP026	1TPL0402422	SCREW TAPPING,PAN HEAD	R	
WTR001	1TRL0302618	SCREW TAPPING,BRIZER HEAD	R	
WTT021	1TTL0402418	SCREW TAPPING,TRUSS HEAD	R	
WTT028	1TTL0402818	SCREW TAPPING,TRUSS HEAD	R	
WTT037	1TTL0403818	SCREW TAPPING,TRUSS HEAD	R	

R : SERVICE PARTS

