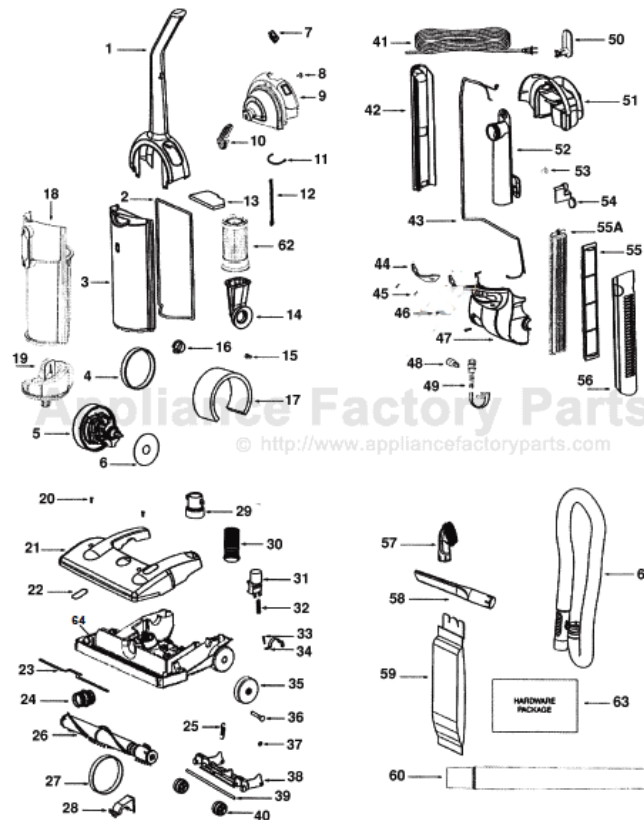


This Owner's Manual is provided and hosted by [Appliance Factory Parts](http://www.appliancefactoryparts.com).



# GE 106575 Owner's Manual

[Shop genuine replacement parts for GE 106575](#)



[Find Your GE Vacuum Cleaner Parts - Select From 21 Models](#)

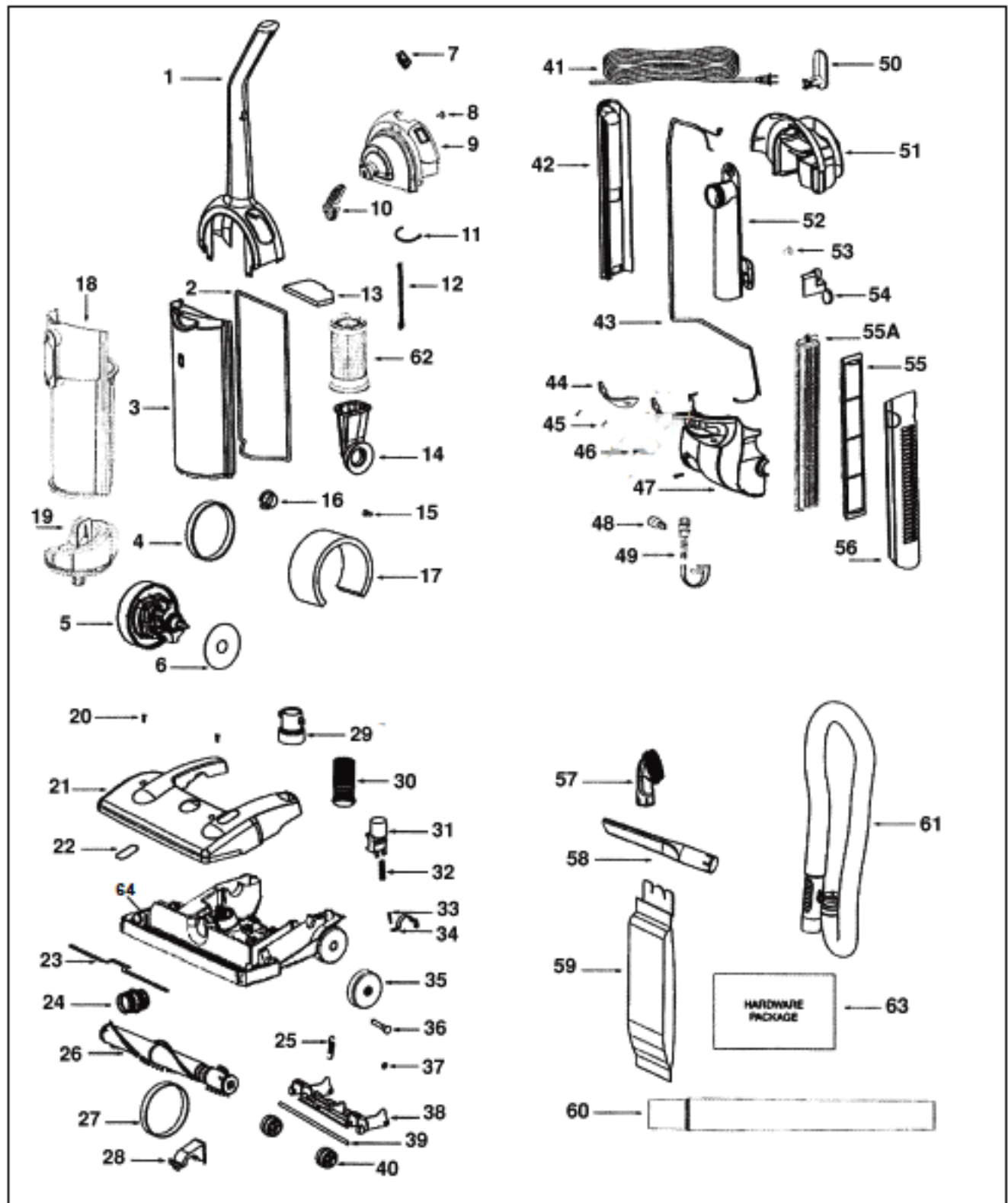
----- Manual continues below part list -----

## Available Replacement Parts for GE 106575

<a href="#">e-39266</a>	BELT OEM EUREKA EXTENED LIFE 1 PACK
<a href="#">E-70772</a>	FILTER, SECONDARY WALMART & GE VAC 1PK
<a href="#">e-60990-2</a>	BRUSH
<a href="#">E-54943</a>	Spring,
<a href="#">E-39173A-119N</a>	Front wheel
<a href="#">HR-3500</a>	HEADLIHT BULB

# EUREKA Original & Replacement

GENERAL ELECTRIC UPRIGHT  
Paper Bag Models GE5500, 106575  
Dirt Cup Models GE5550, 106585



# Original & Replacement **EUREKA**

## GENERAL ELECTRIC UPRIGHT Paper Bag Models GE5500, 106575 Dirt Cup Models GE5550, 106585

KEY	PART NO.	DESCRIPTION	KEY	PART NO.	DESCRIPTION
1	E-39435-1	Handle Assembly	37	E-54432-1	Retaining Ring
2	E-70728-1	Bag Cover Gasket GE5500, 106575	38	E-14993C-119N	Front Wheel Carriage
3	E-71122A	Bag Cover GE5500, 106575	39	E-71551	Front Axle
4	E-27962	Gasket	40	E-39173A-119N	Front Wheel
5	NLA	Motor	41	E-38880-26	Power Cord
6	E-38888A	Motor Shield	42	E-15692-355N	Extension Tube Housing
7	E-39455-1	Switch	43	E-39362-1	Upper Cord Assembly
8	E-80180	Screw	44	E-28466A-313N	Lens
9	E-71116-1	Top Housing GE5500, 106575	45	E-53238-8	Screw
9	E-71116-2	Top Housing GE5550, 106585	46	E-53238-27	Screw
10	E-39357-355N	Latch	47	E-61438-1	Motor Cover GE5500, 106575
11	E-46713-5	Cable Tie	47	E-61438-2	Motor Cover GE5550, 106585
12	E-39252-9	Thermostat GE5500, 106575	48	E-57940-2	Bulb
13	E-70772	Secondary Filter GE5500, 106575	48	HR-3500	Bulb
14	E-71114-1	Air Duct GE5500, 106575	49	E-38828B-5	Headlight Socket
14	E-71114-3	Air Duct GE5550, 106585	50	E-70864A-119N	Upper Cord Hook
15	SS-3270	Wire Nut	51	E-53238-1	Carry Handle
16	E-27552B	Grommet	52	E-61438-2	Rear Tube Assembly GE5500, 106575
17	E-72224-1	Sound Foam	52	E-57940-2	Rear Tube Assembly GE5550, 106585
18	E-71154-1	Dust Cup Assembly GE5550, 106585	53	HR-3500	Fastener
19	E-71152A-1	Plenum Assembly GE5550, 106585	54	E-38828Bst	Hose Retainer
20	E-53238-44	Screw	53	Filter F30	Micron Filter GE5500, 106575
21	E-71059A-1	Hood GE5500, 106575	56	E-61984	Hepa Filter Style GE-1 GE5550, 106585
21	E-71059A-2	Hood GE5550, 106585		GER-1800	HEPA Filter Style GE-1 GE5550, 106585
22	E-28469-313N	Belt View Window	NR	NLA	Filter Cover Slide On Style GE5500, 106575
23	E-58506-3	Gasket	56	E-71587-2	Filter Cover Latch Style GE5550, 106585
24	E-28243A-318N	Hose Adaptor	57	E-60990-2	Combination Brush
25	E-54043	Spring	58	E-28497-119N	Crevice Tool
26	E-80909-3	Brushroll	59	E-61983	Paper Bag Style GE-1 3 PK
26	ER-2035	Brushroll	59	GER-1471	Paper Bag Style GE-1 Microlined DVC 3 PK
27	E-39266	Belt	59	GER-1431	Paper Bag Style GE-1 Micro Filtration Envirocare 3 PK
27	E-61120	Belt 2 PK			
28	E-54376-2	Belt Cap Assembly	60	E-71119-1	Nesting Wands
29	E-28496-119N	Hose Cuff	61	E-61440-3	Hose Assembly GE5500, 106575
30	E-38479-4	Nozzle Hose	61	E-61440-4	Hose Assembly GE5550, 106585
31	E-28468-355N	Handle Release	62	E-61770	Dirt Cup Filter GE5550, 106585
32	E-60133	Spring	63	E-71118A	Hardware Package
33	E-53238-27	Screw	64	E-60938-6	Base
34	E-38420-2	Clamp			
35	E-61875	Rear Wheel			
36	E-38590A	Rear Axle			