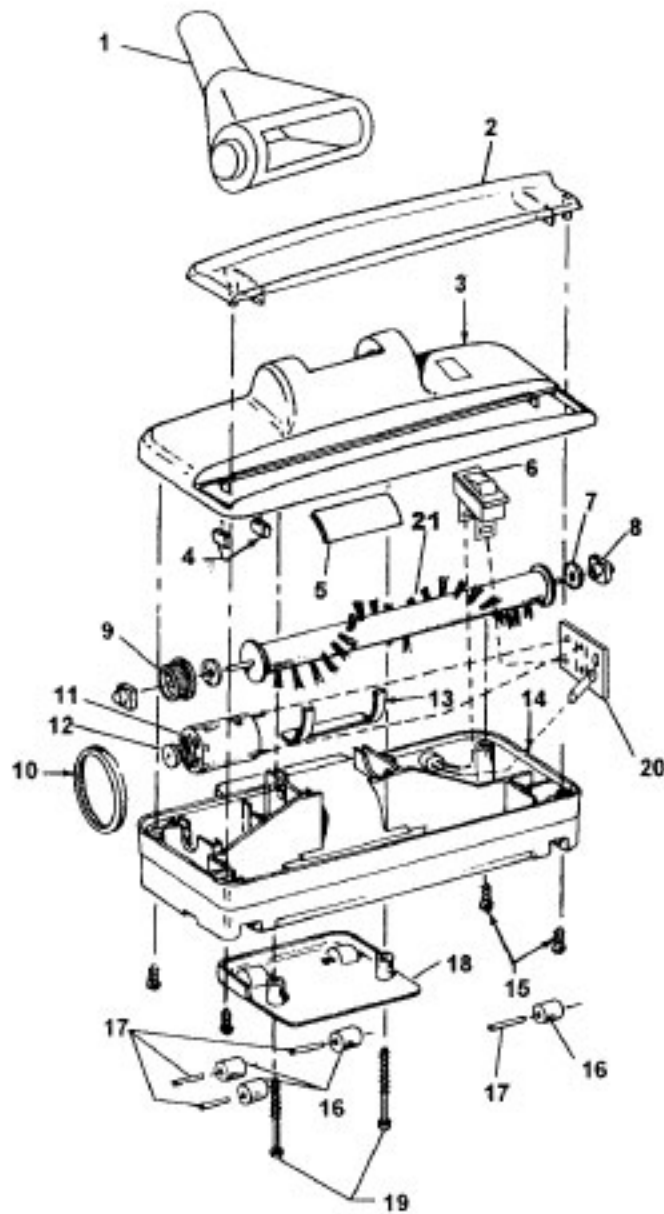


**Quik Broom w/ Power Nozzle and Tools**

**Model S2610**

Ref. No.	Part No.	Description	Ref. No.	Part No.	Description
1	39454061	Handle	25	21329108	Washer
2	27479307	Wire Tie	26	24118214	Motor Bearing
3	37227002	Air Intake Door	27	36134006	Bearing Retainer
4	46326005	Receptacle Assem.	28	214793DA	Screw
5	28161063	Switch	29	21479443	Screw
6	37222023	Front Housing - ACF	30	27618508	Wire Connector
7	39442045	Hose Wrap	31	37222016	Rear Housing - ABE (incl. it. 14)
8	43615087	Filter / Separator Assembly	32	21447236	Screw
9	21447236	Screw	33	46363110	Attachment Cord
10	43645047	Dirt Cup - (Inc. It. 11)	34	21447072	Screw (3)
11	36153004	Latch - AG	35	43491014	Hose Assembly
12	21642021	Nut	36	36433119	Tool Holder
13	21312818	Washer	37	38351018	Spring
14	38783022	Seal	38	21447124	Screw
15	43566012	Fan Assembly	39	37227002	Air Intake Door
	43566019	Fan Assembly			
16	34123048	Motor Support Seal	Items Not Illustrated		
17	42193024	Motor Housing Assembly			
18	31148011	Spacer		38765021	Secondary Filter
19	44731085	Armature Assembly		34341011	Retainer Clip (Used to secure Receptacle Assembly - Item 4)
20	45312072	Field Assembly (incl. it. 24)	Packaging Material		
21	31195005	Motor Mount Insulator		56512178	Owners Manual
22	37193026	Motor Brush Housing		58134040	Carton
23	38353014	Spring (2)		58364018	Cleaner Support
24	47313010	Motor Brush Assembly (includes 2 brushes and 2 crimps)			



Ref. No.	Part No.	Description
Powered Nozzle Comp. - 48438131		
1	59139300	Nozzle Connector
2	59139259	Agitator Housing Lens
	59139260	Foam Seal Lens
3		Agitator Housing
4		Rubber Block
5	59139244	Seal
6	59139295	Switch
7		Washer
8	59139228	Agitator Bearing
9		Pulley
10	59139232	Belt
11	59139230	Agitator Motor
12	59139275	Motor Pulley
13	59139245	Seal
14		Bottom Plate
15	59139209	Screw
16	59139233	Roller
17	59139234	Roller Shaft
18		Bottom Cover
19		Screw
20	59139293	Circuit Board w/ Attach. Cord
21	59139227	Agitator Assembly

Items Not Illustrated

59139294	Cord Strap
171078--	Torx Driver (Used to remove item 19 Screw)