

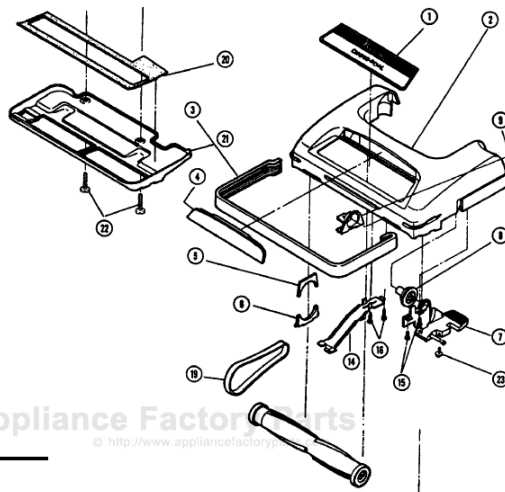
This Owner's Manual is provided and hosted by [Appliance Factory Parts](#).



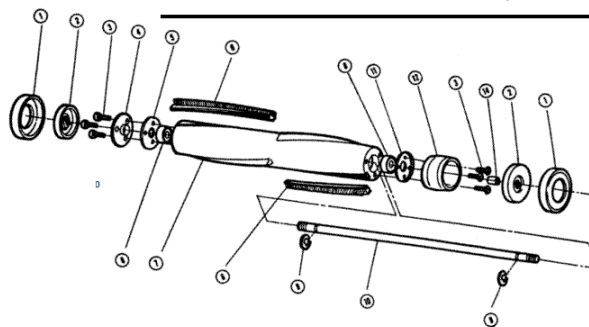
PANASONIC 5520 Owner's Manual

[Shop genuine replacement parts for PANASONIC 5520](#)

Body Unit



Agitator Assembly



[Find Your PANASONIC Vacuum Cleaner Parts - Select From 605 Models](#)

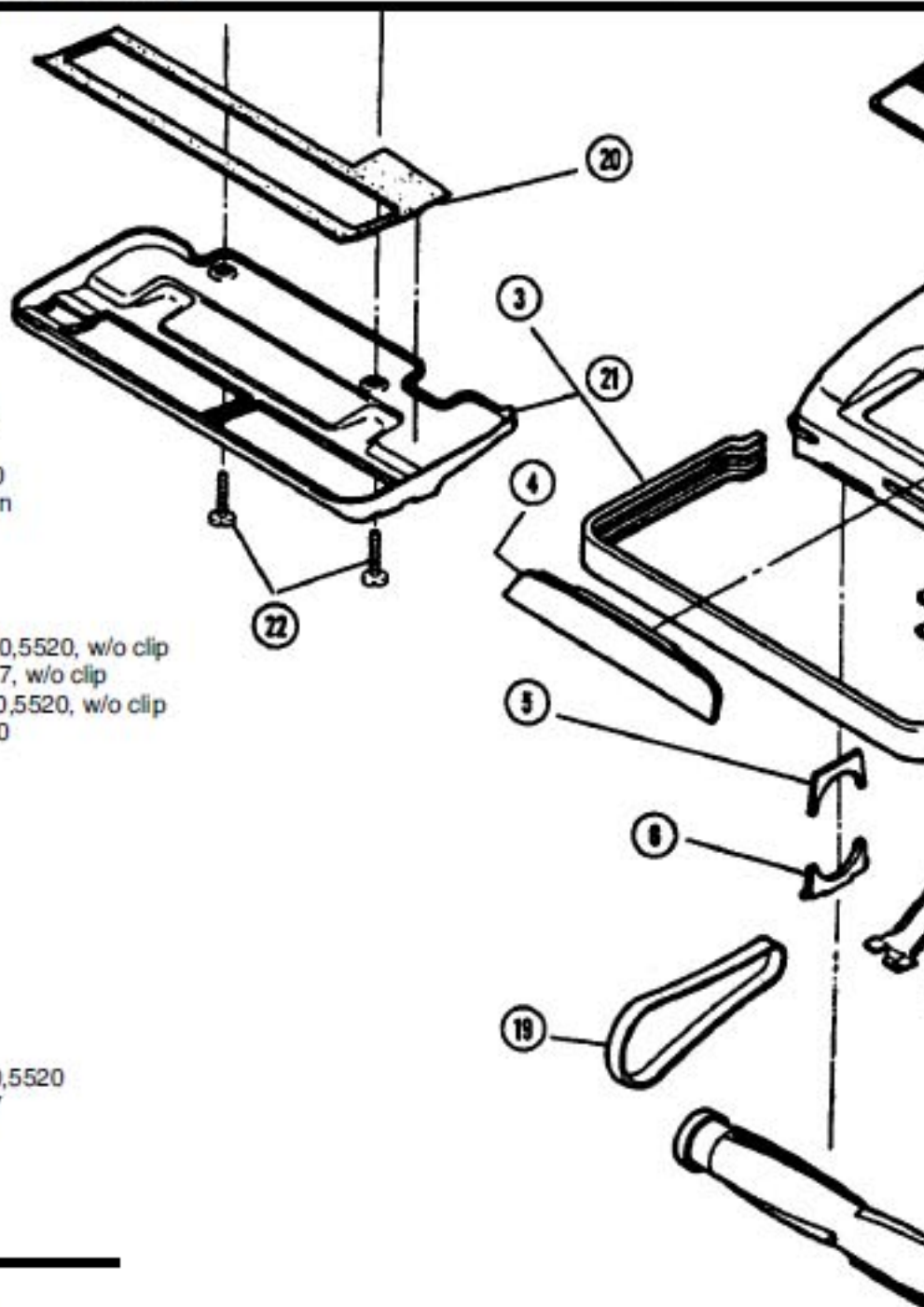
----- Manual continues below -----

PANASONIC

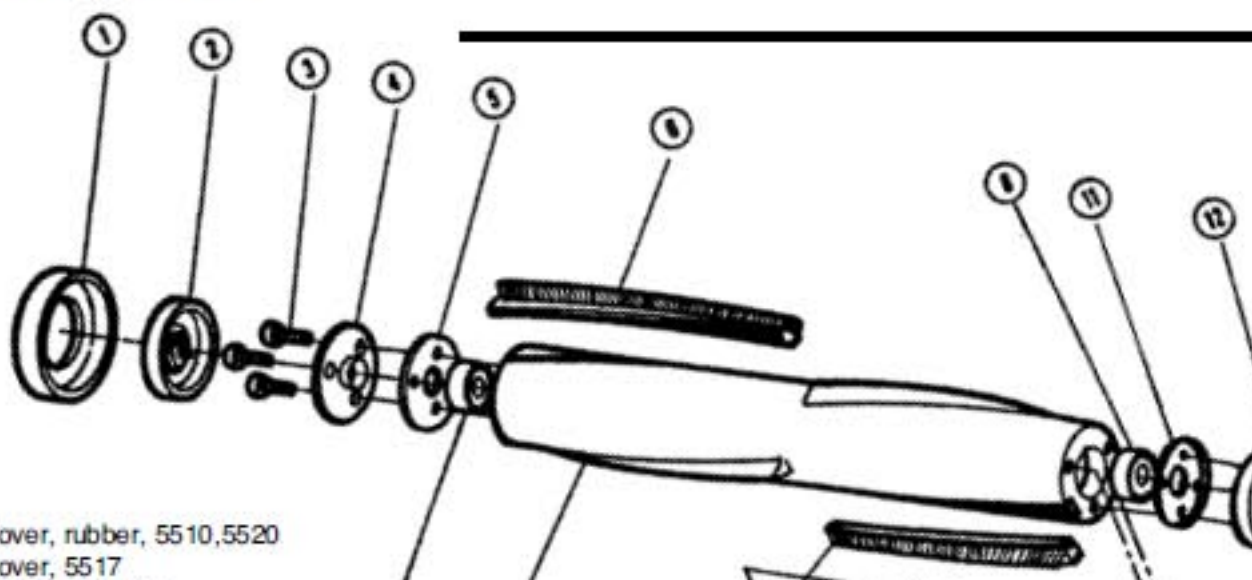
Models: MC-5510, MC-5517, MC-5520

Body Unit

- | | | |
|-----|---------|---|
| A1 | P-21 | Top Mark, 5510,5520 |
| A1 | P-00200 | Top Mark, 5517 |
| A2 | N/A | Nozzle Housing, red, 5510 |
| A2 | P-01040 | Nozzle Housing, 5517 |
| A2 | N/A | Nozzle Housing, grey, 5520 |
| A3 | P-107 | Furniture Guard, dark brown |
| A3 | P-10704 | Furniture Guard, 5517 |
| A4 | P-217 | Cover, lens, 5510 |
| A4 | P-21704 | Cover, lens, 5517 |
| A4 | P-2170 | Cover, lens, grey, 5520 |
| A5 | P-005 | Agitator Holder, upper, 5510,5520, w/o clip |
| A5 | P-005 | Agitator Holder, upper, 5517, w/o clip |
| A6 | P-050 | Agitator Holder, lower, 5510,5520, w/o clip |
| A7 | P-807 | Pedal Assembly, 5510,5520 |
| A7 | P-80700 | Pedal Assembly, 5517 |
| A8 | P-257 | Bearing, plastic holder |
| A9 | P-787 | Bearing, metal holder |
| A14 | P-4300 | Belt Cover |
| A15 | P-46 | Screw, for frame |
| A16 | P-46 | Screw, for bearing |
| A19 | P-2287 | Belt, 2 pack |
| A19 | P-200 | Belt, sold each (R) |
| A20 | P-197 | Body Packing, gasket |
| A21 | P-277 | Base Plate, 5510,5520 |
| A21 | P-27700 | Base Plate, 5517 |
| A22 | P-20 | Screw, for base plate, 5510,5520 |
| A22 | P-68000 | Screw, for base plate, 5517 |
| A23 | P-516 | Screw, long foot pedal |



Agitator Assembly

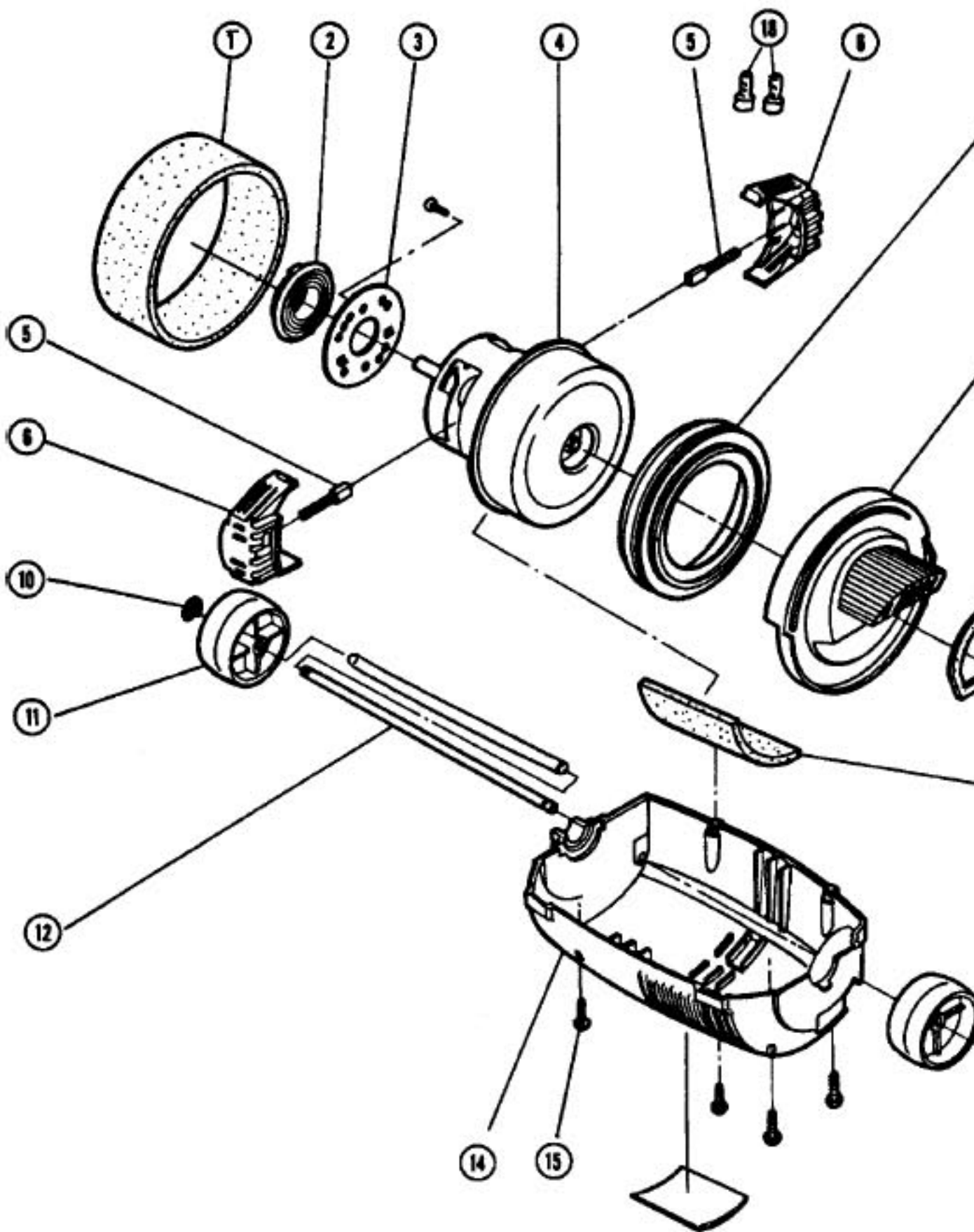


- | | | |
|----|---------|------------------------------|
| B1 | P-41000 | End Cover, rubber, 5510,5520 |
| B1 | P-41000 | End Cover, 5517 |

PANASONIC

Models: MC-5510, MC-5517, MC-5520

Motor Housing Unit



PANASONIC

Models: MC-5510, MC-5517, MC-5520

Power Switch Unit

