

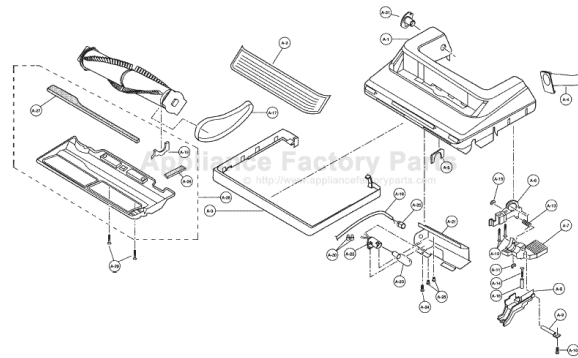
This Owner's Manual is provided and hosted by [Appliance Factory Parts](http://www.appliancefactoryparts.com).



PANASONIC 6855 Owner's Manual

[Shop genuine replacement parts for PANASONIC 6855](#)

Nozzle Housing



[Find Your PANASONIC Vacuum Cleaner Parts - Select From 605 Models](#)

----- Manual continues below -----

PANASONIC

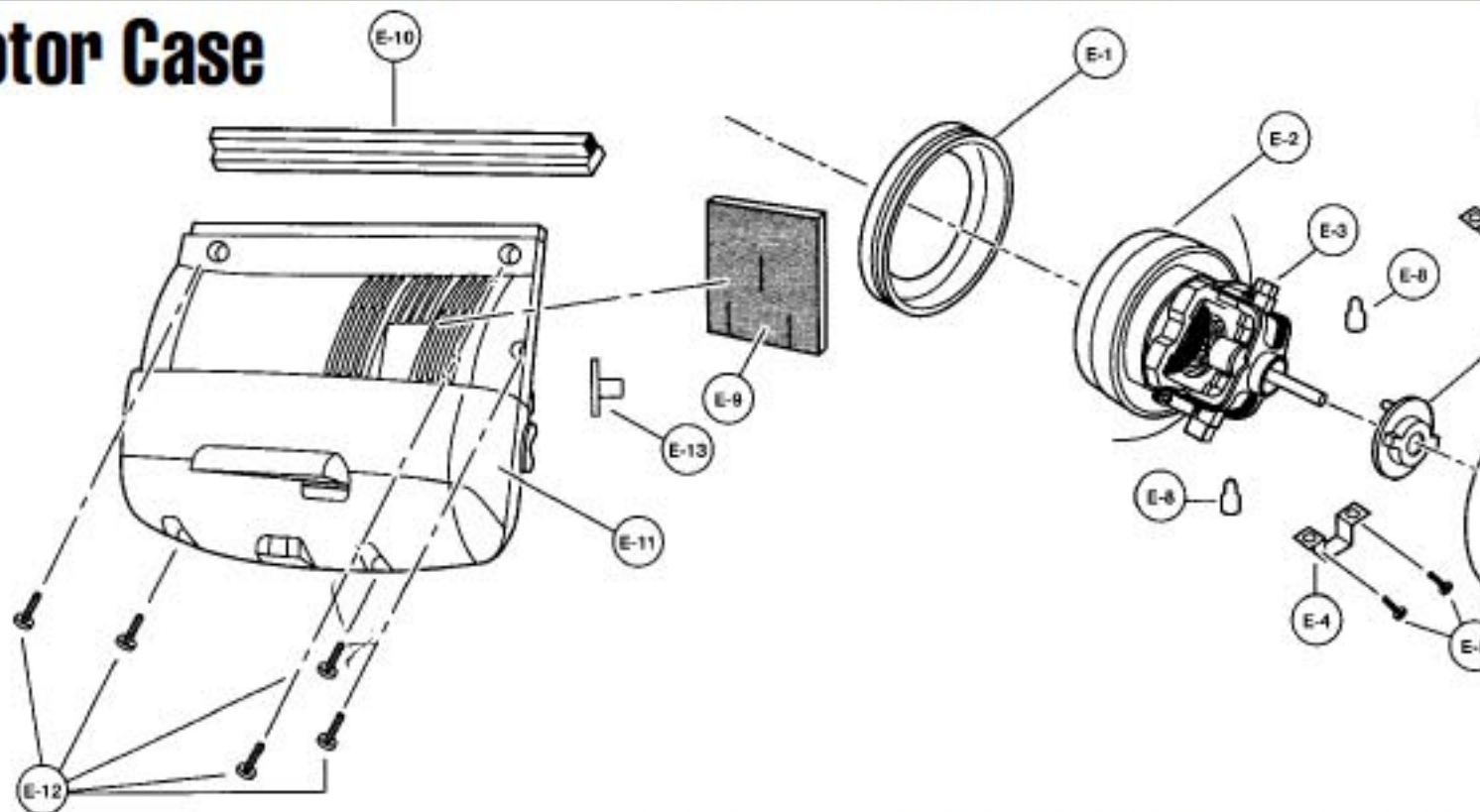
Models: MC-6810, MC-6815, MC-6837, MC-6855

20	P-000132	Screw, switch cover
21	P-161	Roller Shaft
22	P-6115	Washer, roller shaft
23	P-0114	Wheel, black
24	N/A	E-Clip
25	P-115P	Paper Bag, type U3, 3 pack
25	P-115PT	Paper Bag, type U3, 12 pack
25	253	Paper Bag, 3 pack (R)

25	253-12	Paper Bag, 12 pack (R)
25	MF-11	Paper Bag, 3 pack, micro-filtration (R)
26	P-7023	Secondary Filter
27	P-000037	Dust Cover, 6815, 6855
27	P-000285	Dust Cover, 6810
27	P-000301	Dust Cover, 6837
28	P-9893	Filter Supporter, 6855, 6837

29	P-309	
30	P-000	
31	P-000	
32	P-000	
33	P-253	
34	P-000	
35	P-000	

Motor Case



1	P-0293	Motor Support, rubber front
2	P-000062	Motor Assembly, 6815, 6855
2	P-000144	Motor Assembly, 6810
2	P-2908	Motor Assembly, 6837
3	P-0035	Carbon Brush Assy, 6815, 6855
3	P-9834	Carbon Brush Assy, 6810
3	P-27009	Carbon Brush Assy, 6837
4	P-0036	Retainer Bracket
5	P-0037	Screw, retainer bracket
6	P-99111	Motor Support Rubber, rear

7	P-99300	
8	P-00062	
9	P-5960	
10	P-1912	
11	P-00006	
11	P-00028	
11	P-00013	
12	P-00013	
13	P-7805	
	P-0410	

Rear Dust Compartment

1	N/A	Dust Compartment, 6810
1	P-000020	Dust Compartment, 6815
1	P-000021	Dust Compartment, 6855, 6837
2	P-000286	Handle Assembly, 6810
2	P-000018	Handle Assembly, 6815, 6855, 6837
3	P-7035	Upper Cord Hook
4	P-000048	Screw, handle
5	P-8972	Suction Inlet Cover
6	P-9894	Packing, suction inlet
7	P-0648	Hose Assembly, w/ air inlet

