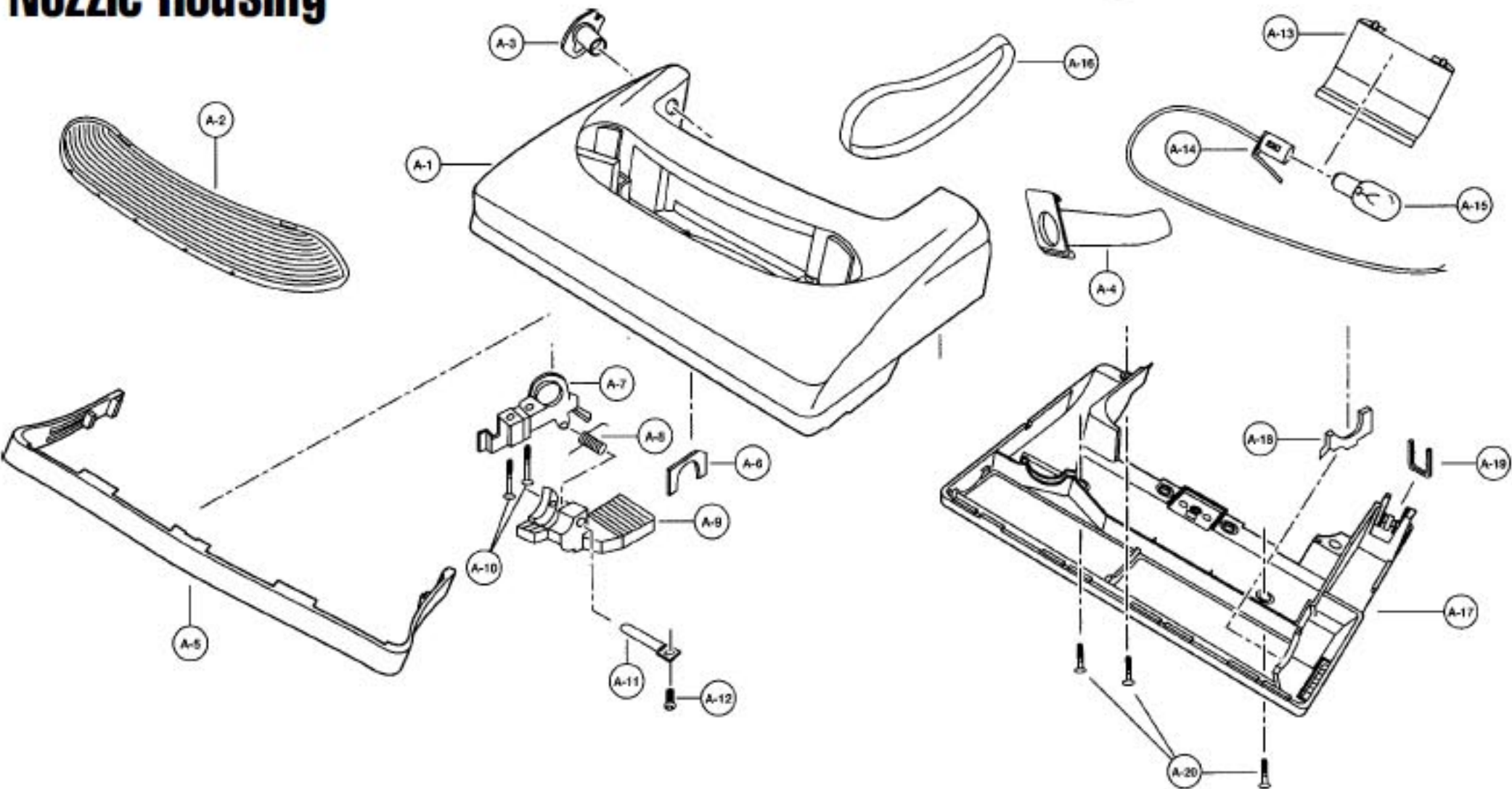


Models: MC6915, MC-6955

## Nozzle Housing



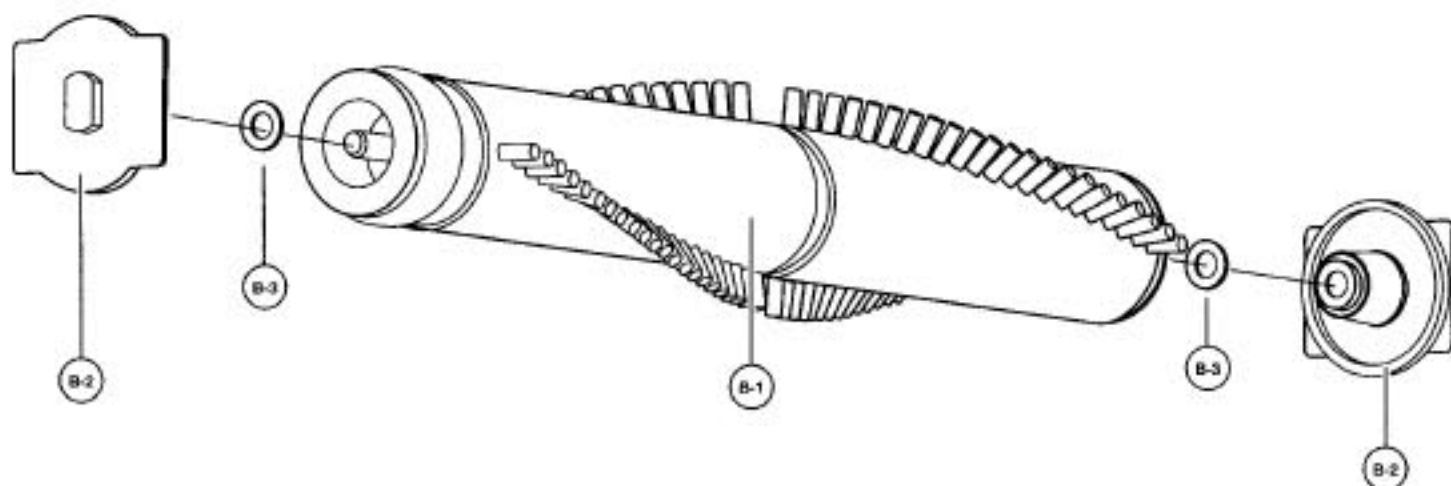
- 1 .... P-000288 ..... Nozzle Housing, 6915
- 1 .... P-000289 ..... Nozzle Housing, 6955
- 2 .... P-10105 ..... Window
- 3 .... P-2500 ..... Plastic Shaft
- 4 .... P-000063 ..... Nozzle Pipe
- 5 .... P-10107 ..... Furniture Guard
- 6 .... P-81 ..... Tight Packing
- 7 .... P-000095 ..... Frame

- 8 .... P-000010 ..... Pedal Spring
- 9 .... P-4720 ..... Pedal
- 10 .. N/A ..... Screw, frame
- 11 .. P-5120 ..... Shaft, pedal
- 12 .. N/A ..... Screw, pedal shaft
- 13 .. P-10109 ..... Reflector
- 14 .. P-9367 ..... Bulb Socket
- 15 .. P-2810 ..... Bulb

- 16 .. P-2287 ..... Belt, type UB, 2 pack
- 16 .. P-200 ..... Belt, sold each (R)
- 17 .. P-000113 ..... Bottom Plate, 6915, 6955
- 18 .. P-7500 ..... Bottom Plate Packing
- 19 .. P-43 ..... Belt Cover
- 20 .. P-000015 ..... Screw, bottom plate

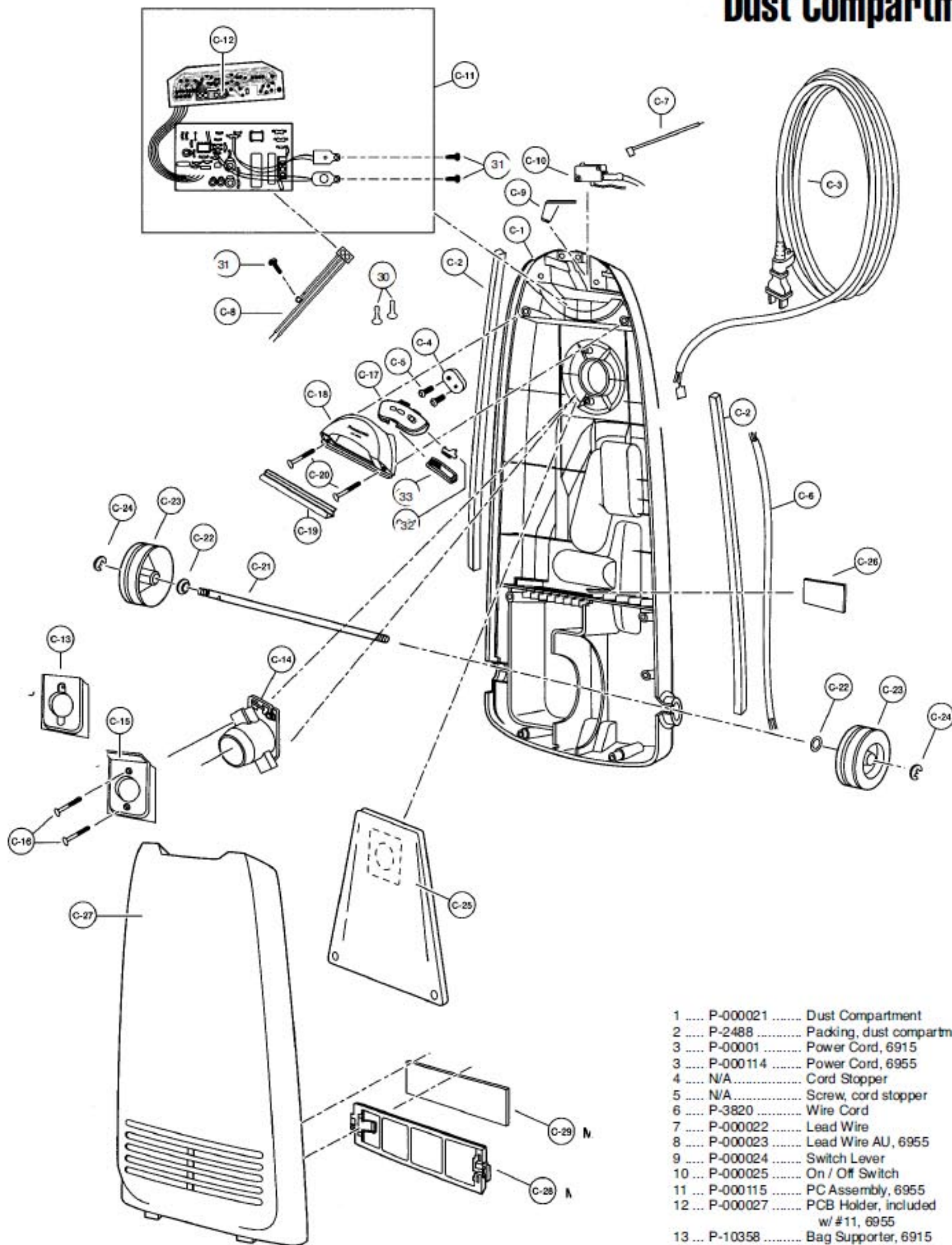
## Agitator Assembly

- 1 .... P-9212 ..... Agitator Body
- 2 .... P-0693 ..... End Cap A
- 3 .... P-0694 ..... End Cap B
- 4 .... P-0030 ..... Washer





## Dust Compartment



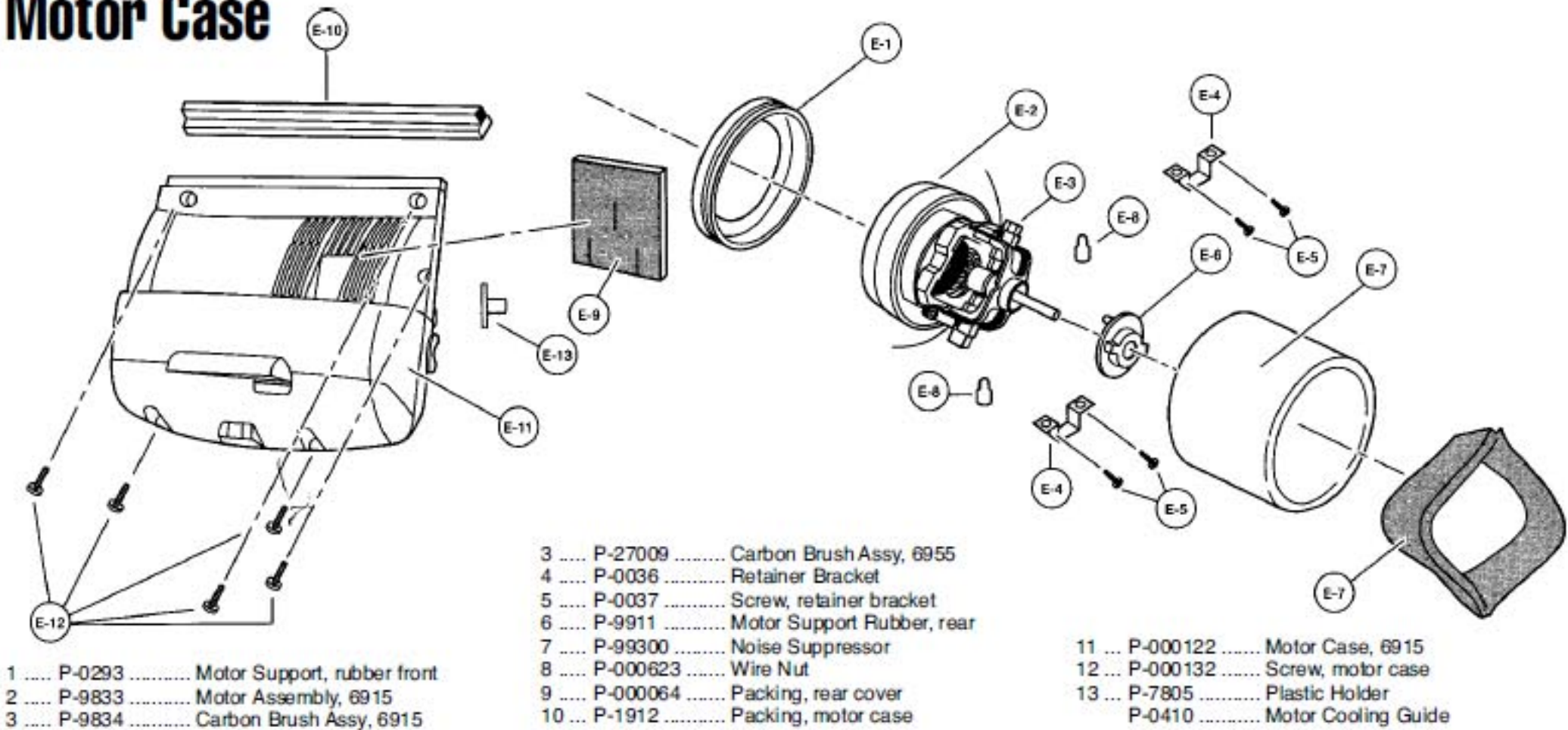
- |    |       |          |       |                                      |
|----|-------|----------|-------|--------------------------------------|
| 1  | ..... | P-00021  | ..... | Dust Compartment                     |
| 2  | ..... | P-2488   | ..... | Packing, dust compartment            |
| 3  | ..... | P-00001  | ..... | Power Cord, 6915                     |
| 3  | ..... | P-000114 | ..... | Power Cord, 6955                     |
| 4  | ..... | N/A      | ..... | Cord Stopper                         |
| 5  | ..... | N/A      | ..... | Screw, cord stopper                  |
| 6  | ..... | P-3820   | ..... | Wire Cord                            |
| 7  | ..... | P-00022  | ..... | Lead Wire                            |
| 8  | ..... | P-00023  | ..... | Lead Wire AU, 6955                   |
| 9  | ..... | P-00024  | ..... | Switch Lever                         |
| 10 | ..... | P-00025  | ..... | On / Off Switch                      |
| 11 | ..... | P-000115 | ..... | PC Assembly, 6955                    |
| 12 | ..... | P-00027  | ..... | PCB Holder, included<br>w/ #11, 6955 |
| 13 | ..... | P-10358  | ..... | Bag Supporter, 6915                  |



Models: MC-6915, MC-6955

- |  |  |  |
|--|--|--|
| 14 ... P-000029 ..... Bag Supporter, 6955    | 22 ... P-6115 ..... Washer, roller shaft                   | 26 ... P-7023 ..... Secondary Filter     |
| 15 ... P-000290 ..... Fin Cover, 6955        | 23 ... P-0114 ..... Wheel, black                           | 27 ... P-000118 ..... Dust Cover, 6915   |
| 16 ... P-000132 ..... Screw                  | 24 ... N/A ..... E-Clip                                    | 27 ... P-000119 ..... Dust Cover, 6955   |
| 17 ... P-000031 ..... Ornamental Plate, 6955 | 25 ... P-115P ..... Paper Bag, type U3, 3 pack             | 28 ... P-000505 ..... Filter Supporter   |
| 18 ... P-00015 ..... Switch Cover, 6915      | 25 ... P-115PT ..... Paper Bag, type U3, 12 pack           | 29 ... P-3099 ..... Electrostatic Filter |
| 18 ... P-000117 ..... Switch Cover, 6955     | 25 ... 253 ..... Paper Bag, 3 pack (R)                     | 30 ... P-000623 ..... Wire Nut           |
| 19 ... P-000034 ..... Packing, switch cover  | 25 ... 253-12 ..... Paper Bag, 12 pack (R)                 | 31 ... P-2531 ..... Screw, 6955          |
| 20 ... P-000132 ..... Screw, switch cover    | 25 ... MF-11 ..... Paper Bag, 3 pack, micro-filtration (R) | 32 ... P-000043 ..... Sensor Knob, 6955  |
| 21 ... P-161 ..... Roller Shaft              |  | 33 ... P-000044 ..... LED Lens, 6955     |

## Motor Case



## Rear Dust Compartment

