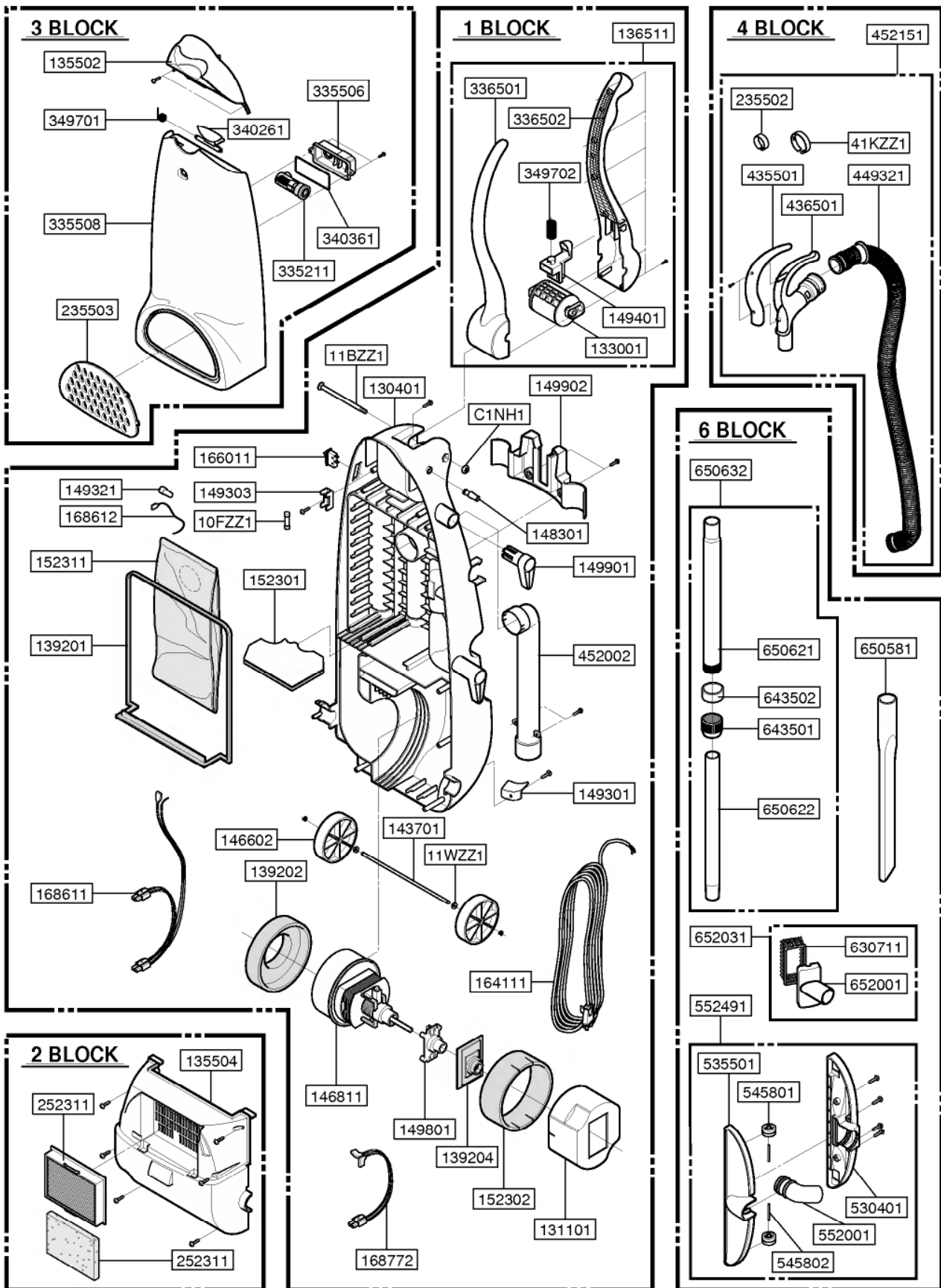
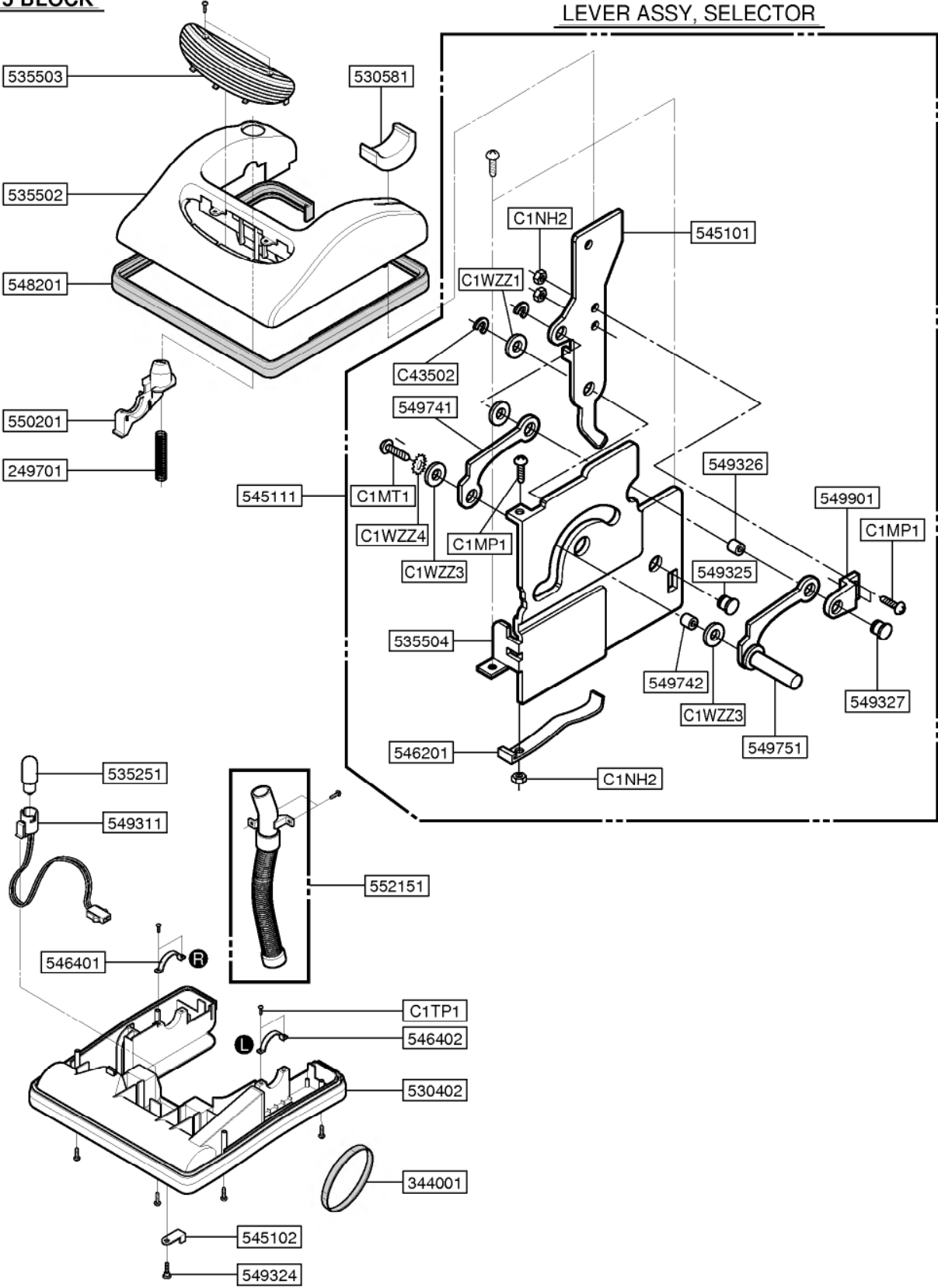


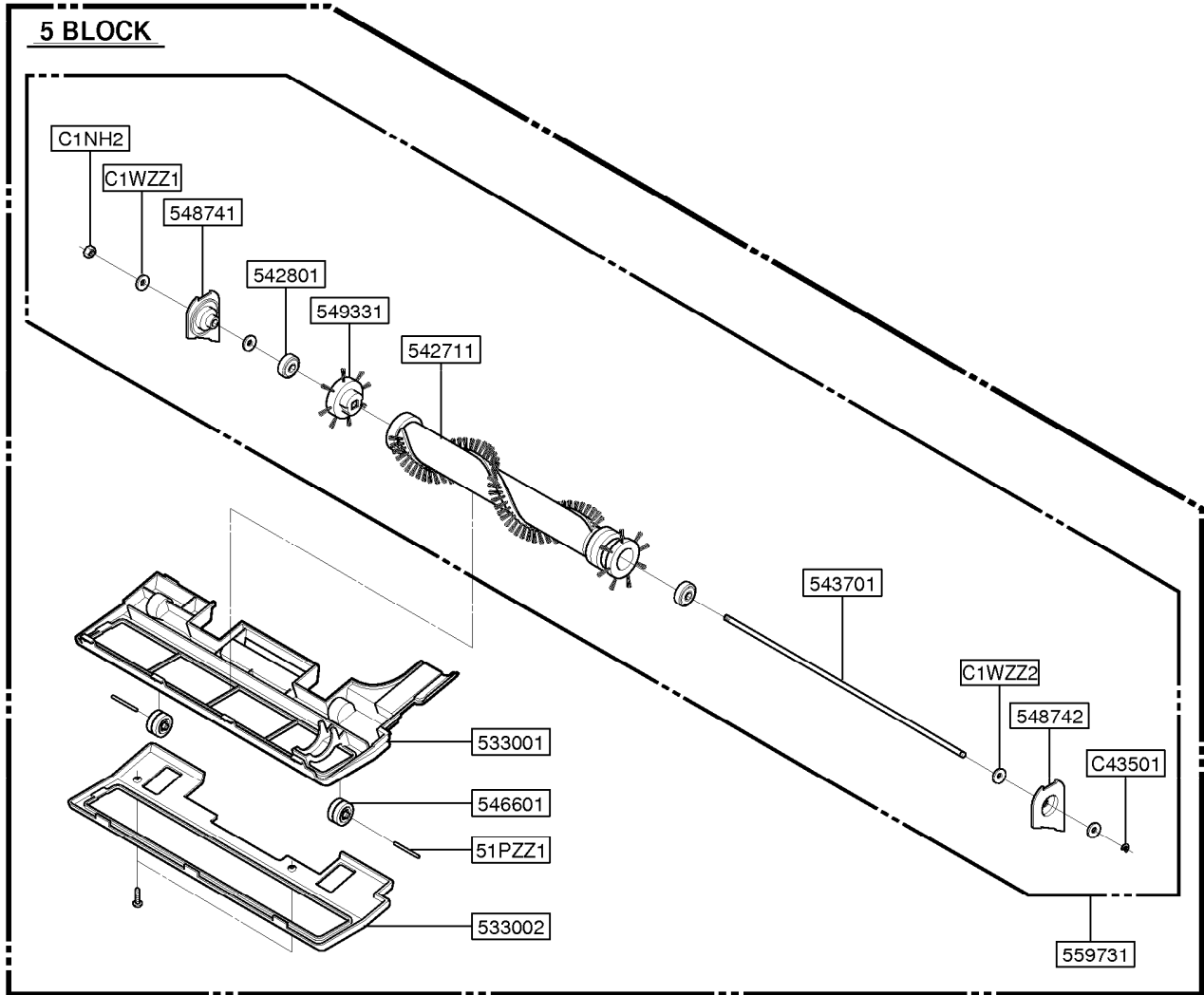
# EXPLODED VIEW



**5 BLOCK**

**LEVER ASSY, SELECTOR**





# REPLACEMENT PARTS LIST

| BLOCK  | LOCATION NO. | PART NAME                   | PATR NO.     |              | BLOCK                             | LOCATION NO.          | PART NAME                      | PATR NO.             |             |  |
|--------|--------------|-----------------------------|--------------|--------------|-----------------------------------|-----------------------|--------------------------------|----------------------|-------------|--|
|        |              |                             | V-7515T      | V-7513T      |                                   |                       |                                | V-7515T              | V-7513T     |  |
| 1      | 130401       | BASE, BODY                  | 3040FI1456A  | 3040FI1456A  | 2                                 | 135504                | COVER, MOTOR                   | 3550FI1471B          | 3550FI1471A |  |
|        | 131101       | CASE, ABSORBER              | 3110FI12001A | 3110FI12001A |                                   | 252311                | FILTER ASS'Y, EXHAUST          | 5231FI2447A          | -           |  |
|        | 133001       | PLATE, ROTATE               | 3300FI1451A  | 3300FI1451A  | 252311                            | FILTER ASS'Y, EXHAUST | -                              | 5231FI3752A          |             |  |
|        | 136511       | HANDLE ASS'Y                | 3651FI1307B  | 3651FI1307A  | 3                                 | 135502                | COVER, FRONT                   | 3550FI1470A          | 3550FI1470A |  |
|        | 139201       | PACKING, DUST SEAL          | 3920FI1277A  | 3920FI1277A  |                                   | 235503                | COVER, EXHAUST FILTER          | 3550FI2453A          | 3550FI2453A |  |
|        | 139202       | PACKING, MOTOR MOUNTING     | 3920FI3732A  | 3920FI3732A  |                                   | 335211                | INDICATOR ASS'Y                | 3I23019J             | 3I23019J    |  |
|        | 139204       | PACKING, SEAL               | 3920FI3735A  | 3920FI3735A  |                                   | 335506                | COVER, INDICATOR               | 3550FI3390B          | 3550FI3390B |  |
|        | 143701       | SHAFT, WHEEL                | 4660FI4562A  | 4660FI4562A  |                                   | 335508                | COVER, DUST                    | 3550FI1469B          | 3550FI1469A |  |
|        | 146602       | WHEEL, LARGE                | 4660FI3733A  | 4660FI3733A  |                                   | 340261                | LATCH                          | 4026FI3662B          | 4026FI3662A |  |
|        | 146811       | MOTOR ASS'Y, VC             | 4681FI2434A  | 4681FI2434A  |                                   | 340361                | SEAL, INDICATOR                | 4036FI4074A          | 4036FI4074A |  |
|        | 148301       | BUSHING, CORD               | 4830FI4640A  | 4830FI4640A  | 349701                            | SPRING, LATCH         | 4970FI4691A                    | 4970FI4691A          |             |  |
|        | 149301       | HOLDER                      | 4930FI3758A  | 4930FI3758A  | 4                                 | 235502                | COVER, CONTROL                 | 3550FI4658B          | 3550FI4658A |  |
|        | 149303       | HOLDER, FUSE                | 4930FI4667A  | 4930FI4667A  |                                   | 435501                | COVER, GRIP HANDLE             | 3550FI1465B          | 3550FI1465A |  |
|        | 149321       | CONNECTOR (MECH), NYLON     | 4H50253B     | 4H50253B     |                                   | 436501                | HANDLE, GRIP                   | 3650FI1467A          | 3650FI1467A |  |
|        | 149401       | KNOB, REGULATION            | 4940FI2001A  | 4940FI2001A  |                                   | 452151                | HOSE ASS'Y, FLEXIBLE           | 5215FI1302B          | 5215FI1302A |  |
|        | 149801       | SUPPORTER, MOTOR            | 4980FI3669A  | 4980FI3669A  |                                   | 41KZZ1                | KEY                            | 1KZZFI4002A          | 1KZZFI4002A |  |
|        | 149901       | HANGER, CORD                | 4990FI3027A  | 4990FI3027A  |                                   | 449321                | CONNECTOR, HOSE ASM            | 5215FI2228A          | 5215FI2228A |  |
|        | 149902       | HANGER, GUIDE               | 4990FI2001A  | 4990FI2001A  |                                   | 5                     | 530581                         | PEDAL, SELECTOR      | 3058FI3001A |  |
|        | 152301       | FILTER (MECH), MOTOR SAFETY | 5230FI3747A  | 5230FI3747A  | LEVER ASSY, SELECTOR              |                       | 533002                         | PLATE, BOTTOM (IRON) | 3300FI1453A |  |
|        | 152302       | PACKING, ABSORBING          | 4I23008B     | 4I23008B     | 535504                            |                       | BOARD, HEAD                    | 3500FI2239A          |             |  |
|        | 152311       | FILTER ASS'Y, PAPER         | 5231FI2391A  | 5231FI2391A  | 545101                            |                       | LEVER, SELECTOR                | 4510FI3585A          |             |  |
|        | 164111       | POWER CORD ASS'Y            | 6411FI2422A  | 6411FI2422B  | 545111                            |                       | LEVER ASS'Y, SELECTOR          | 4511FI3633A          |             |  |
|        | 166011       | SWITCH ASS'Y                | 6601FI3487A  | 6601FI3487A  | 546201                            |                       | STOPPER, SPRING                | 4620FI4008A          |             |  |
|        | 168611       | WIRE ASS'Y, CONNECTOR       | 6861FI2001A  | 6861FI2001A  | 549325                            |                       | CONNECTOR (MECH), SHAFT[LEVER] | 4932FI4189A          |             |  |
|        | 168612       | WIRE ASS'Y                  | 6861FI3003A  | 6861FI3003A  | 549326                            |                       | CONNECTOR (MECH), RING         | 4932FI4192A          |             |  |
|        | 168772       | LEAD WIRE ASS'Y, MOTOR      | 6861FI3001A  | 6861FI3001A  | 549327                            |                       | CONNECTOR (MECH), PIN          | 4932FI4193A          |             |  |
|        | 336501       | HANDLE, UPPER               | 3650FI1468B  | 3650FI1468A  | 549741                            |                       | GUIDE, SELECTOR                | 4974FI4051A          |             |  |
|        | 336502       | HANDLE, LOWER               | 3650FI1469A  | 3650FI1469A  | 549742                            |                       | GUIDE, RING                    | 4974FI4052A          |             |  |
|        | 349702       | SPRING, REGULATION          | 4970FI4693A  | 4970FI4693A  | 549751                            |                       | GUIDE ASS'Y, SELECTOR          | 4975FI4001A          |             |  |
|        | 452002       | PIPE, CONNECTOR             | 5200FI1211A  | 5200FI1211A  | 549901                            |                       | HANGER, SELECTOR               | 4990FI4001A          |             |  |
|        | 10FZZ1       | FUSE                        | 416037W      | 416037W      | C1MP1                             |                       | SCREW MACHINE, PAN HEAD        | 1MPC0402418          | -           |  |
| 11BZZ1 | BOLT         | 1BZZFI4002A                 | 1BZZFI4002A  | C1MT1        | SCREW MACHINE, TRUSS NUT, HEXAGON | 1MTC0403318           | -                              |                      |             |  |
| 11WZZ1 | WASHER       | 1WZZFI4002B                 | 1WZZFI4002B  | C1NH2        | NUT, HEXAGON                      | 1NHB0801018           | -                              |                      |             |  |
| C1NH1  | NUT, HEXAGON | 1NHB0801018                 | 1NHB0801018  | C1WZZ3       | WASHER                            | 1WZZFI4002D           | -                              |                      |             |  |
|        |              |                             |              | C1WZZ4       | WASHER, STOP                      | 1WZZFI4001A           | -                              |                      |             |  |
|        |              |                             |              | C43502       | RING, E                           | 4080070D              |                                |                      |             |  |

| BLOCK | LOCATION NO. | PART NAME                   | PATR NO.    |             |
|-------|--------------|-----------------------------|-------------|-------------|
|       |              |                             | V-7515T     | V-7513T     |
| 5     | 249701       | SPRING, BUTTON              | 4970FI4689A | 4970FI4689A |
|       | 344001       | BELT                        | 4400FI3347A | 4400FI3347A |
|       | 530402       | BASE, HEAD                  | 3040FI1458A | 3040FI1458A |
|       | 533001       | PLATE, BOTTOM               | 3300FI1452A | 3300FI1452A |
|       | 535251       | BULB                        | 3525FI4001A | 3525FI4001A |
|       | 535502       | COVER, HEAD                 | 3550FI1468B | 3550FI1468A |
|       | 535503       | COVER, LIGHT                | 3550FI1467A | 3550FI1467A |
|       | 542711       | BAR ASS'Y, AGITATOR         | 4271FI1001A | 4271FI1001A |
|       | 542801       | BEARING, HEAD               | 4280FI4040A | 4280FI4040A |
|       | 543701       | SHAFT, AGITATOR             | 4370FI3656A | 4370FI3656A |
|       | 545102       | LEVER, PLATE                | 4510FI4666A | 4510FI4666A |
|       | 546401       | STRAP, HEAD[R]              | 4640FI4001A | 4640FI4001A |
|       | 546402       | STRAP, HEAD[L]              | 4640FI4002A | 4670FI4002A |
|       | 546601       | WHEEL, SMALL                | 4660FI3734A | 4660FI3734A |
|       | 548201       | BUMPER, HEAD                | 4820FI1448A | 4820FI1448A |
|       | 548741       | FIXTURE, AGITATOR[L]        | 4874FI2002A | 4874FI2002A |
|       | 548742       | FIXTURE, AGITATOR[R]        | 4874FI2001A | 4874FI2001A |
|       | 549311       | HOLDER ASS'Y, LAMP          | 4931FI3685A | 4931FI3685A |
|       | 549324       | CONNECTOR (MECH), LEVER     | 4932FI4190A | 4932FI4190A |
|       | 549331       | CONNECTOR ASS'Y (MECH), BAR | 4933FI2003A | 4933FI2003A |
|       | 550201       | BUTTON, RELEASE             | 5020FI2320A | 5020FI2320A |
|       | 552151       | HOSE ASS'Y, HEAD            | 5215FI3001A | 5215FI3001A |
|       | 559731       | AGITATOR ASS'Y              | 5973FI1001A | 5973FI1001A |
|       | 51PZZ1       | PIN                         | 4I22094B    | 4I22094B    |
|       | C1WZZ1       | WASHER                      | 1WZZFI4002A | 1WZZFI4002A |
|       | C1WZZ2       | WASHER                      | 1WZZFI4002C | 1WZZFI4002C |
|       | C1TP1        | SCREW TAPPING, PAN HEAD     | ITPL0403318 | ITPL0403318 |
|       | C43501       | RING, E                     | 4O80070A    | 4O80070A    |

| BLOCK | LOCATION NO. | PART NAME           | PATR NO.    |             |
|-------|--------------|---------------------|-------------|-------------|
|       |              |                     | V-7515T     | V-7513T     |
| 6     | 530401       | BASE, NOZZLE        | 3040FI1465A | 3040FI1465A |
|       | 535501       | COVER, NOZZLE       | 3550FI1466A | 3550FI1466A |
|       | 545801       | ROLLER              | 4I30001A    | 4I30001A    |
|       | 545802       | ROLLER, PIN         | 4I30002A    | 4I30002A    |
|       | 552001       | PIPE, SUCTION       | 5200FI3736A | 5200FI3736A |
|       | 552491       | NOZZLE ASS'Y, FLOOR | 5249FI1386A | 5249FI1386A |
|       | 630711       | BODY ASS'Y, BRUSH   | 3071FI4001A | 3071FI4001A |
|       | 643501       | RING, CONTROL       | 4350FI3754A | 4350FI3754A |
|       | 643502       | RING, FIXING        | 4350FI3755A | 4350FI3755A |
|       | 650581       | TOOL, CREVICE       | 5058FI2212A | 5058FI2212A |
|       | 650621       | WAND, UPPER         | 5062FI2053A | 5062FI2053A |
|       | 650622       | WAND, LOWER         | 5062FI2052A | 5062FI2052A |
|       | 650632       | WAND ASS'Y, SUB     | 5063FI1444A | 5063FI1444A |
|       | 652001       | PIPE, BRUSH         | 5200FI2452A | 5200FI2452A |
|       | 652031       | BRUSH ASS'Y, DUST   | 5203FI2067A | 5203FI2067A |