

Model	VTCB423HTU.CLSESRS		
Language	English		
Page	26	Color(cover/body)	1/1
Material	Weight 100g	Size(W*H)	150×220(mm)
Date	2007.07.30	Designer	Shi Pengfei
Part No.	3828FI9002W	Description	Service manual

### Chage Record

No.	Change content	ECO No.	Date	Designer	Confirm
①					
②					
③					
④					
⑤					
⑥					
⑦					
⑧					
⑨					

**SEARS**

MODEL 721.24195S

**DIVISION 20**

**BASIC FIELD MANUAL**  
**FOR**  
**CANISTER VACUUM CLEANER**

**MODEL 721.24195S**

**AUGUST, 2007**

# FOREWORD

---

**BEFORE SERVICING THE UNIT, READ THE "SAFETY PRECAUTIONS" IN THIS MANUAL.**

## MODEL 721.24195S

### MECHANICAL SERVICE INFORMATION

# TABLE OF CONTENTS

<b>1. SAFETY PRECAUTIONS .....</b>	<b>3</b>
<b>2. CAUTIONS .....</b>	<b>3</b>
<b>3. DESCRIPTION/SPECIFICATIONS</b>	
3.1 MODEL 721.24195S.....	4
<b>4. DISASSEMBLY .....</b>	<b>5-8</b>
<b>5. TROUBLE SHOOTING .....</b>	<b>9-11</b>
<b>6. BLOCK DIAGRAM/SCHEMATIC DIAGRAM/CIRCUIT DIAGRAM</b>	
6.1 MODEL 721.24195S.....	12
<b>7. POWER AND CONTROL CIRCUIT BOARD</b>	
7.1 MODEL 721.24195S.....	13
<b>8. EXPLODED VIEW/REPLACEMENT PARTS LIST</b>	
8.1 MODEL 721.24195S.....	14~20

# 1. SAFETY PRECAUTIONS

**BEFORE OPERATING THIS VACUUM CLEANER, READ THIS SERVICE MANUAL THOROUGHLY, AND OBSERVE EACH POINT CAREFULLY.**

## 1. Change the paper bag in case the indicator moves toward red.

- 1) If the dust bag is full, intake power will be reduced.
- 2) When the dust bag is full of dust, pull out the dust bag from the bag mount.

## 2. Filter

- 1) The filter is composed of a clean filter, a exhaust filter and filter bag.
- 2) Never use the vacuum cleaner without filters. It may harm to the motor.

**NOTE :** Re-use of the clean filter.

- Never wash the filter in a washing machine or in a dishwasher.
- Never use hot water for washing the filter.
- Re-use the filter after drying it completely in the shade.
- Do not dry near fire or direct sun ray.

## 3. Dust indicator

Dust indicator shows you red color when the filter is full of dust.

Then, change the bag with new one.

## 4. Avoid suction such materials as :

- 1) Liquid or wet dust :  
Clog the ventilation holes and reduces the intake power significantly and harms the motor.
- 2) Inflammable liquids such as benzene, alcohol or solvents.
- 3) Burning objects such as cigarette butts.
- 4) Bulky objects such as vinyl, paper etc.
- 5) Sharp objects such as needles, pins, metal or glass particles etc.

## 5. Attachments

- Nozzle : for cleaning wooden floor, the room floor and carpet.
- Brush/Crevice Tool(without brush): for cleaning any crevice, inside corners of window frames.(However, do not use the crevice tool more than 20 minutes.)  
Brush/Crevice Tool (with brush): for delicate vacuuming of fabrics on the furniture, curtains, etc.
- Upholstery Nozzle : for vacuuming the dust on the upholstery.

## 6. Close supervision is necessary when this vacuum cleaner is used by or near children. Children's carelessness may cause damage to the cleaner or injure persons.

## 7. Air exhausted from the vacuum cleaner is normally warm. But if extraordinarily hot air is exhausted, check if the extension pipe, hose or dust bag is clogged or not.

## 8. Electric shock could occur if used outdoors or on wet surfaces.

# 2. CAUTIONS

**BEFORE ATTEMPTING TO SERVICE OR ADJUST ANY PART OF THE VACUUM CLEANER, DISCONNECT THE ELECTRICAL POWER SUPPLY CORD FROM THE WALL OUT**

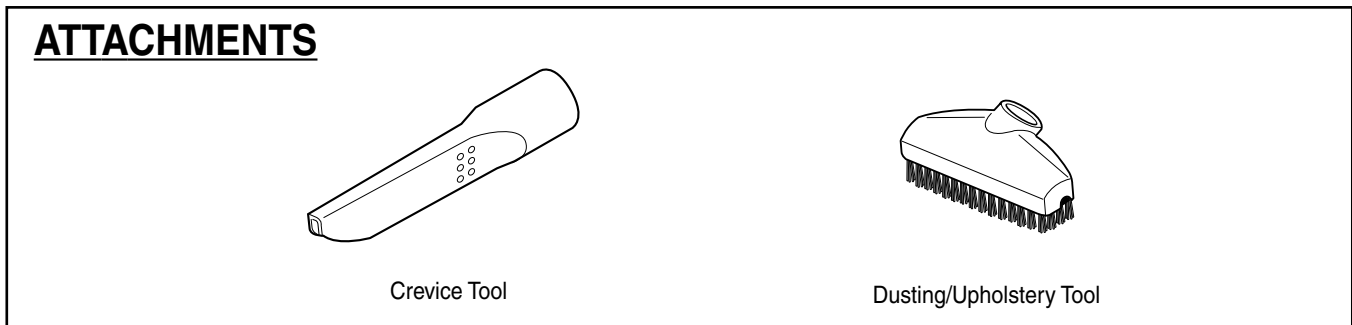
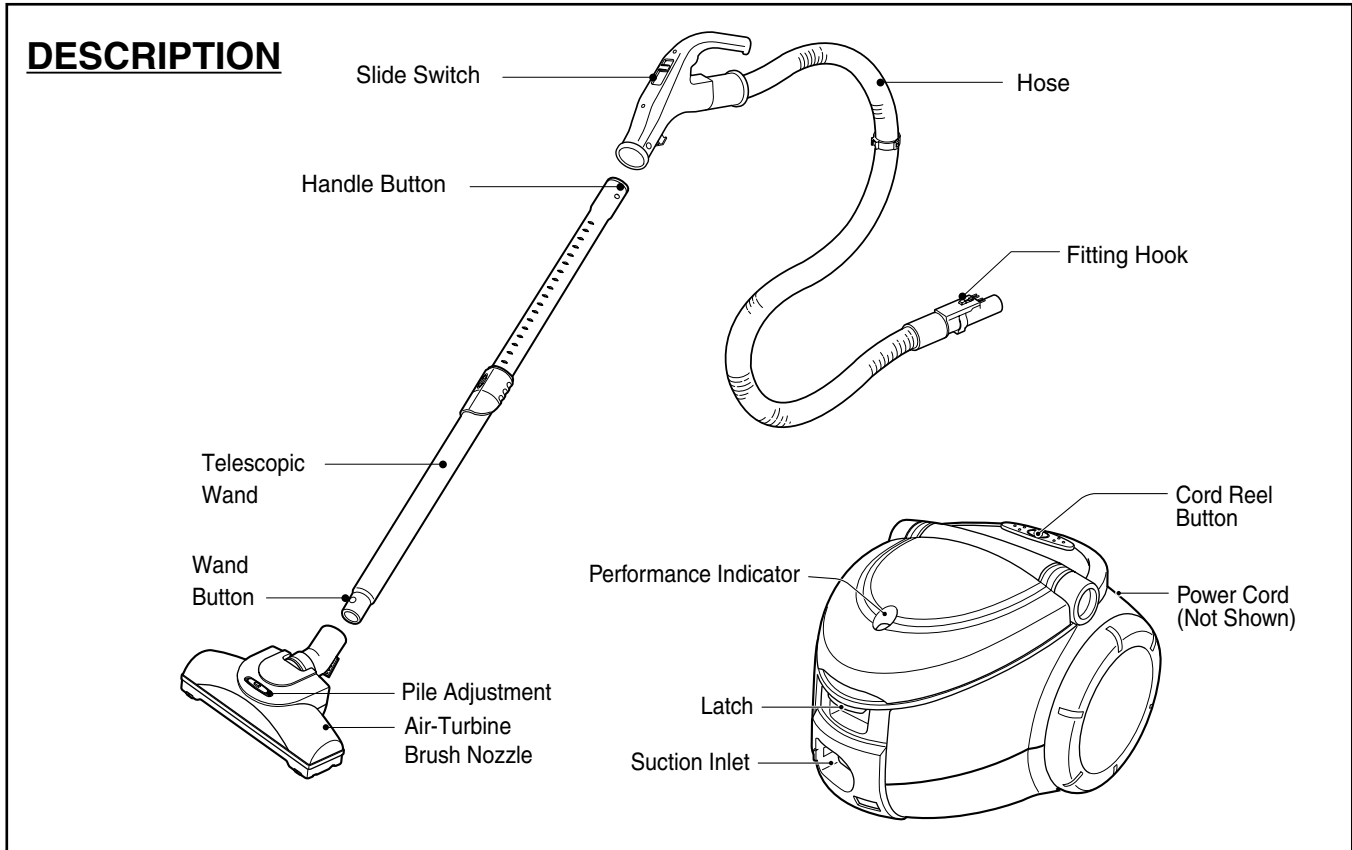
## 1. Motor exchange

- 1) Separate the Body Cover and Body Base by unfastening the screws.
- 2) Disconnect the lead wires.
- 3) Lift the old motor and replace it with a new one.

## 2. In case of exchanging other parts, refer to the exploded view.

# 3. DESCRIPTION/SPECIFICATIONS

## 3.1 MODEL 721.24195S



## SPECIFICATIONS

- **POWER SOURCE:** ON RATING PLATE
- **POWER CONTROL:**  
**MAIN:** SLIDE CONTROL ON HANDLE
- **CAPACITY:** 2.5 l
- **CORD LENGTH:** 5.3 m
- **HOSE LENGTH:** 1.5 m
- **NET WEIGHT:** 4.7 kg
- **PACKING WEIGHT:** 9.2 kg
- **NET DIMENSION:** 296 x 369 x 248 (W x D x H)mm
- **PACKING DIMENSION:** 330 x 579 x 330(W x D x H)mm

- **ATTACHMENTS**
- FLEXIBLE HOSE ASSY .....1EA
- TELESCOPIC WAND .....1EA
- AIR-TURBINE BRUSH NOZZLE .....1EA
- DUSTING/UPHOLSTERY TOOL .....1EA
- CREVICE TOOL .....1EA

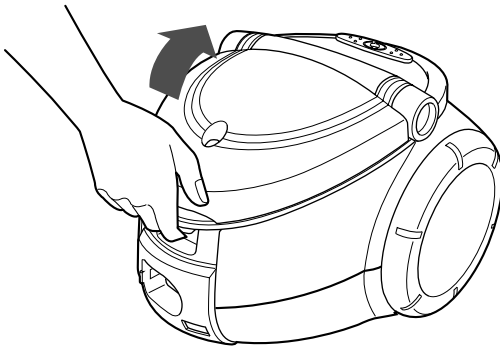
## 4. DISASSEMBLY

**NOTE:** Before attempting to service or adjust any part of the vacuum cleaner, disconnect the electrical power supply cord from the wall outlet.

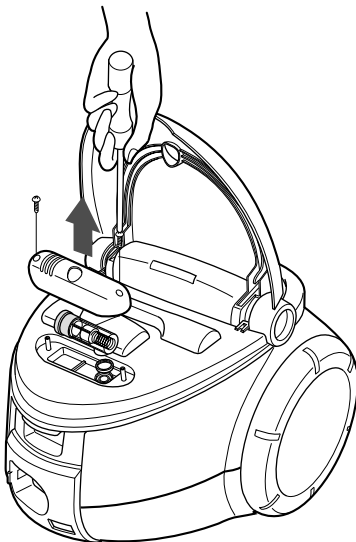
- Almost all the parts of this vacuum cleaner can be assembled with a screw driver and each connecting component easily fits each other. Disassemble one by one referring to the exploded view.
- If possible, don't disassemble except for the necessary parts. It is not necessary to disassemble the parts that are not detailed in the exploded view.

### 4.1 Filter Cover Assembly Replacement

- 1) Grasp body base and open filter cover.

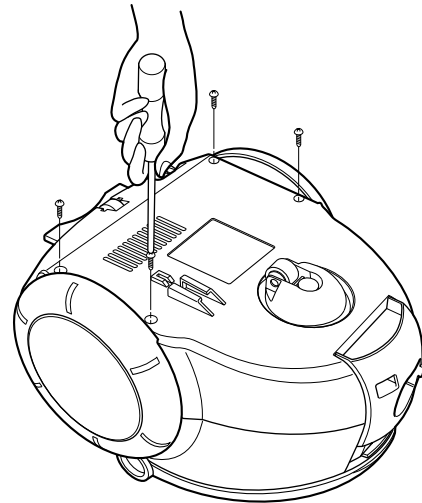


### 4.2 Indicator Assembly Replacement

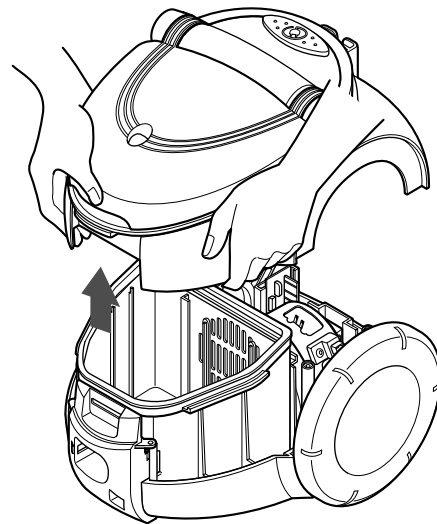


### 4.3 Body Cover Assembly Replacement

- 1) Open the filter cover and remove the two screws and remove the four screws fastening the body base.

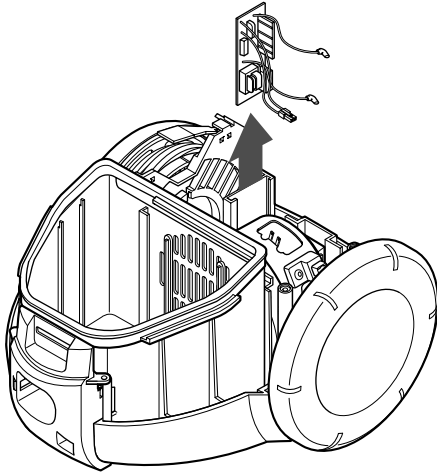


- 2) Lift body cover in the direction of the arrow.



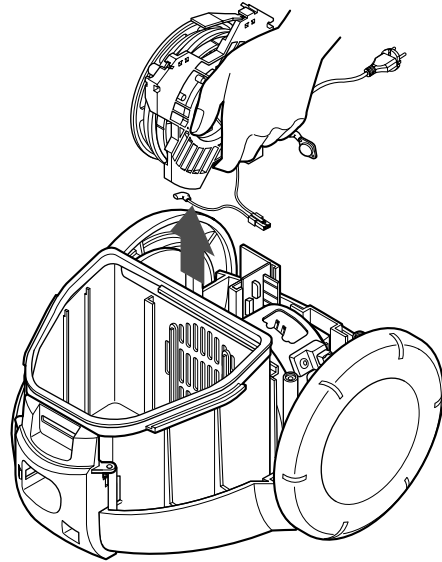
#### 4.4 P.W.B ASS'Y Replacement.

- 1) Lift the P.W.B ASS'Y in the direction of the arrow.



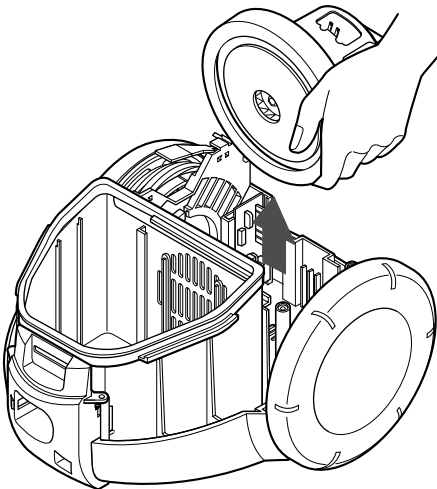
#### 4.6 Cord reel assembly replacement

- 1) Lift the cord reel assembly from the body base in direction of the arrow.
- 2) Strip off the lead wires.



#### 4.5 Motor Assembly Replacement

- Lift the motor assembly in direction of the arrow after stripping off the lead wires.

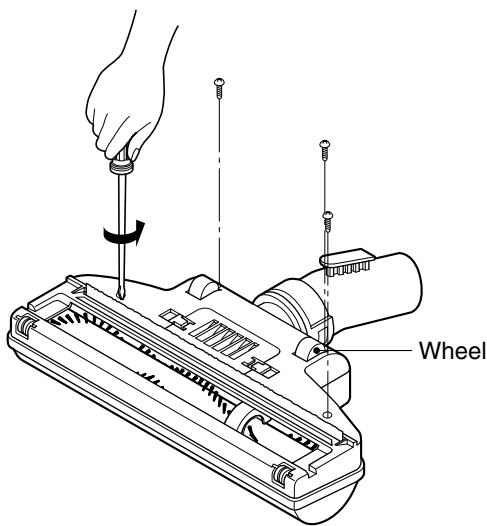


#### 4.7 Belt Changing and Brush Cleaning MODEL 721.24195S

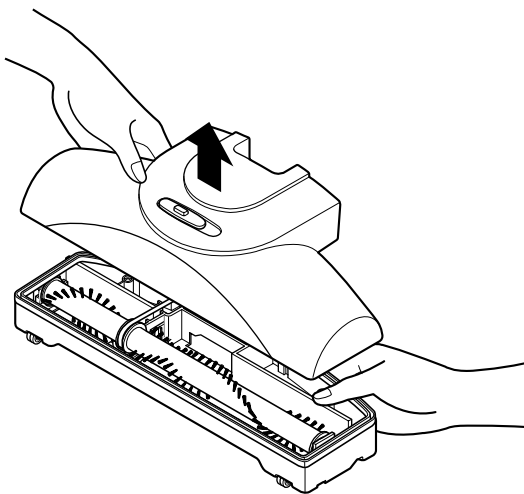
- Disconnect cleaner from electrical outlet. Check and remove hair, string and lint build-up frequently in the Air-Turbine Brush Nozzle brush and brush support areas. If build-up becomes excessive, disconnect Air-Turbine Brush Nozzle from Telescopic wand.

#### TO REMOVE BELT

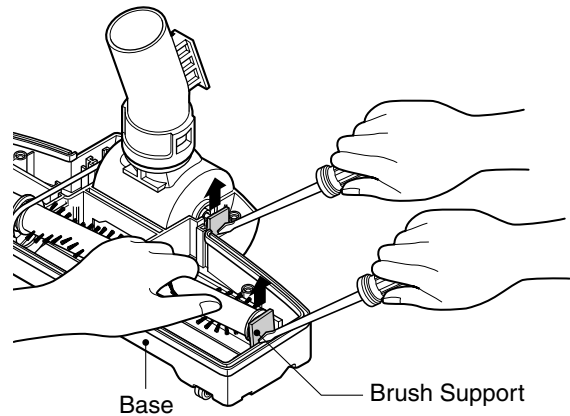
- 1) Turn Air-Turbine Brush Nozzle upside down.
- 2) Unscrew the four Air-Turbine Brush Nozzle cover screws.



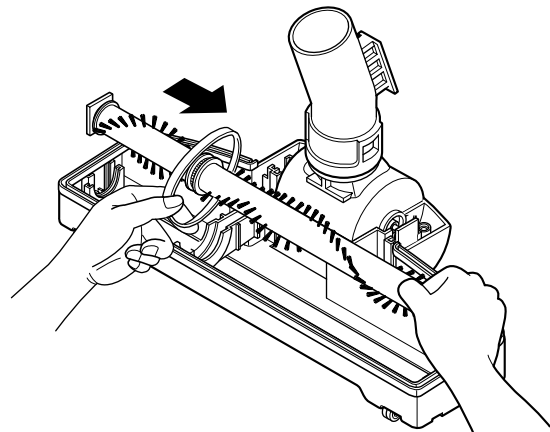
- 3) Turn Air-Turbine Brush Nozzle rear side up and tilt cover forward from back until front snaps free.



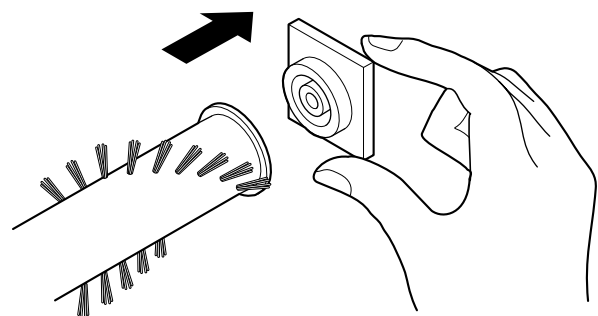
- 4) Carefully insert and lift screwdriver at each brush support to free brush from base.



- 5) Remove worn belt.



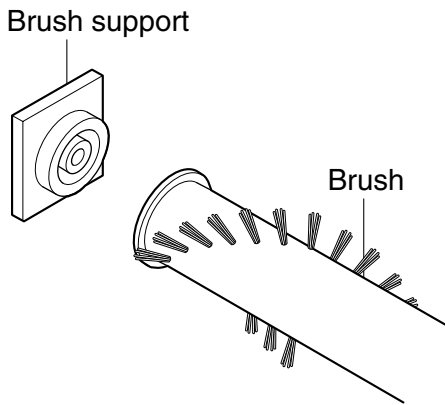
- 6) Slide brush supports off to check and clean brush support areas. See PARTS LIST for picture of complete brush assembly.



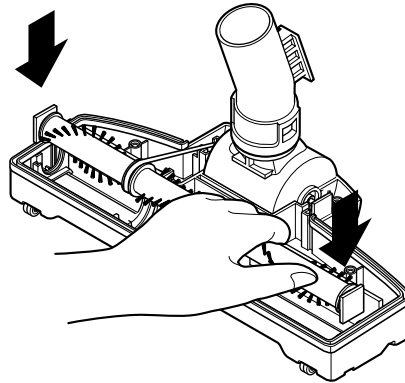


**TO REPLACE BELT:**

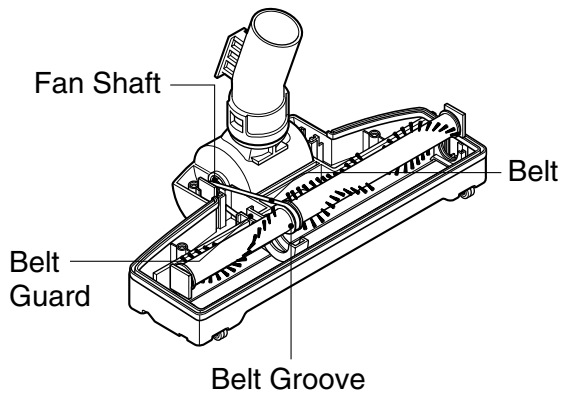
1) Install brush supports onto brush.



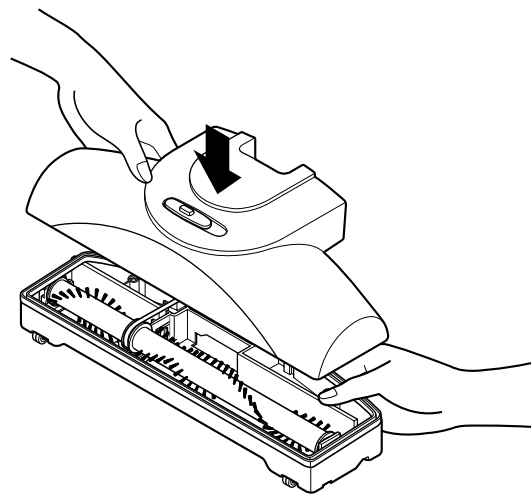
3) Insert each support into its base slot.



2) Install new belt in belt groove on the brush, then over the fan shaft. Be sure belt is between the belt guards.

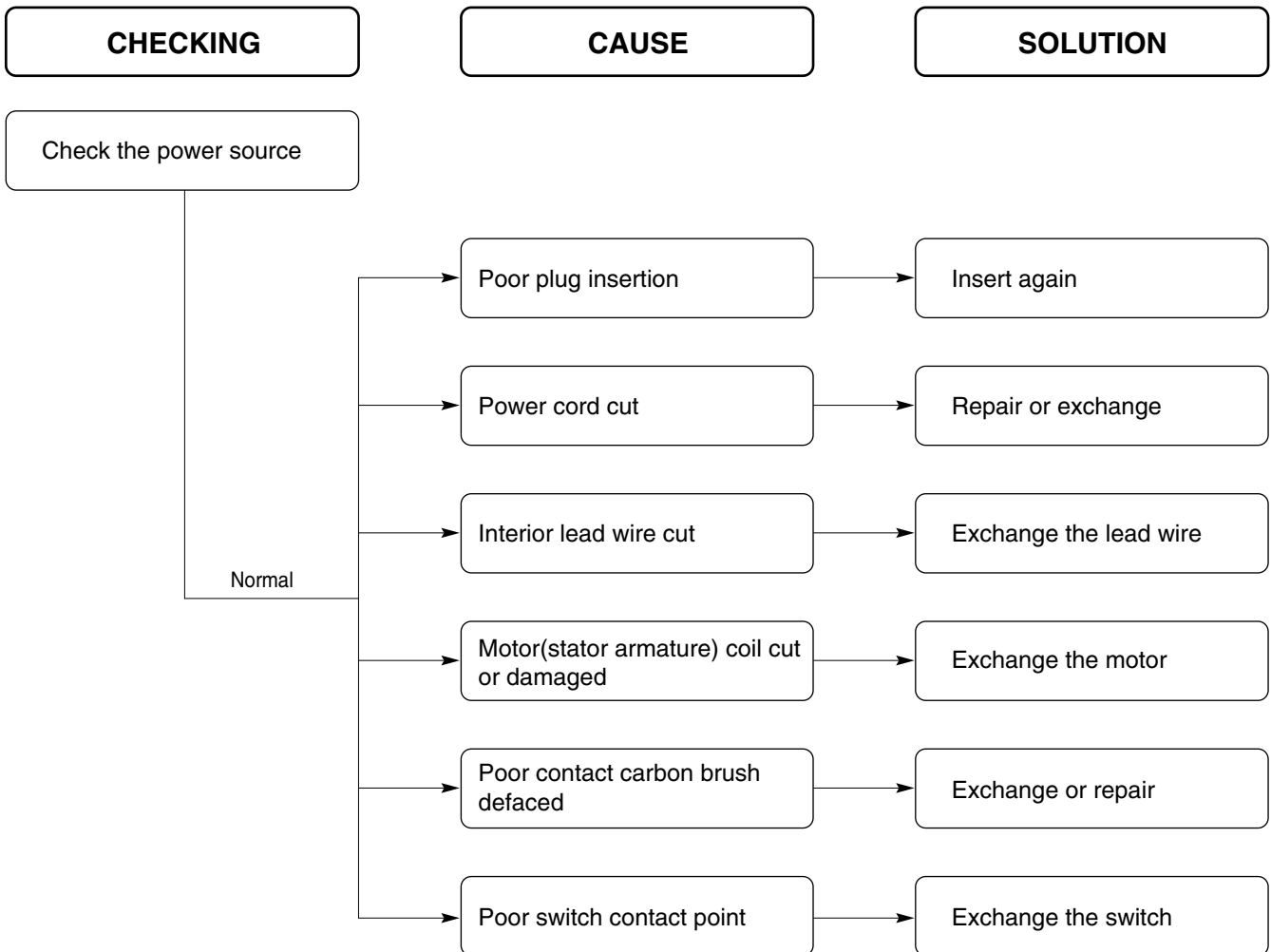


4) Push cover and base together.

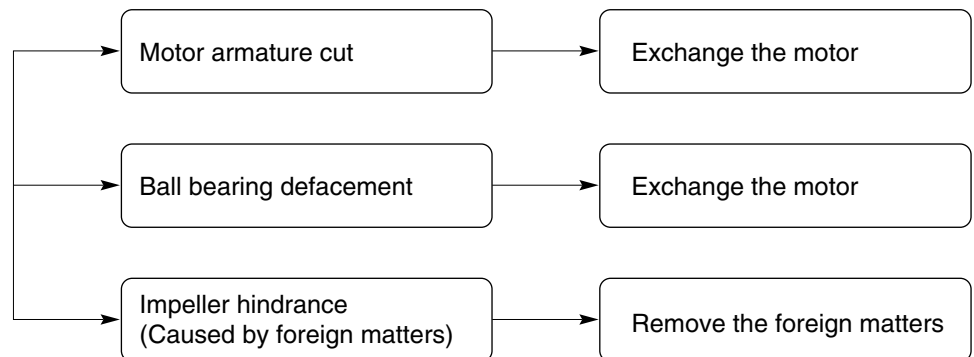


# 5. TROUBLE SHOOTING

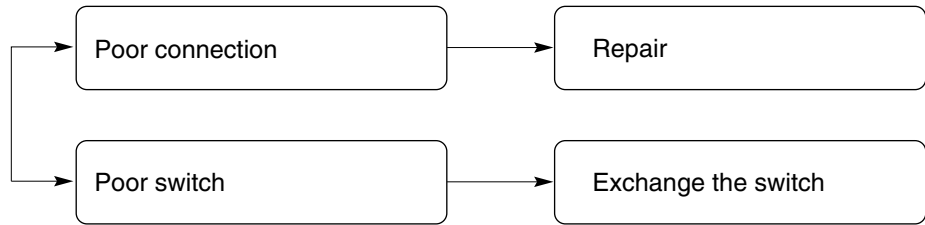
## 1) SWITCH ON BUT MOTOR DOES NOT RUN.



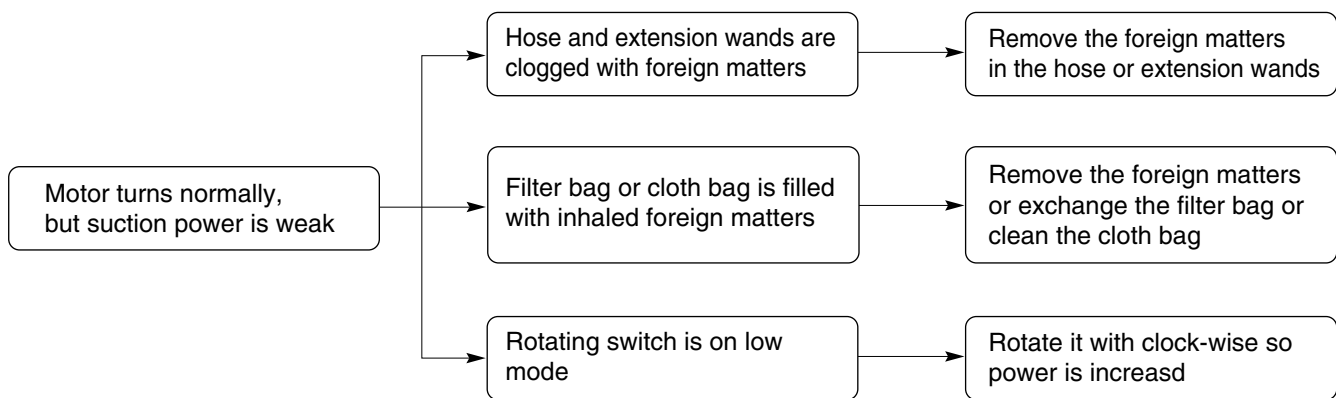
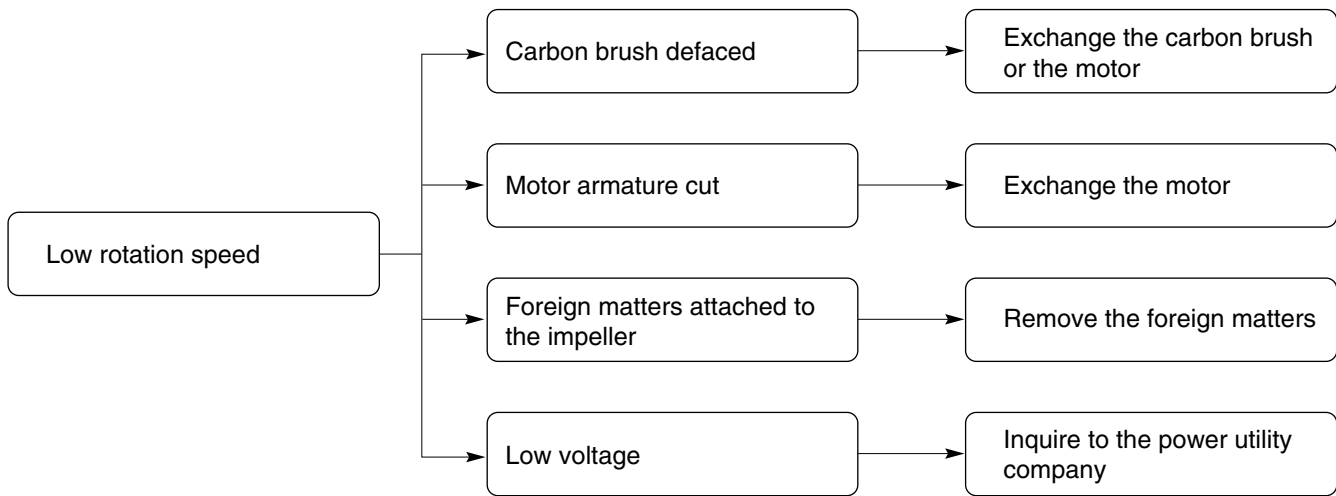
## 2) SWITCH ON, MOTOR DOES NOT RUN BUT BUZZES.



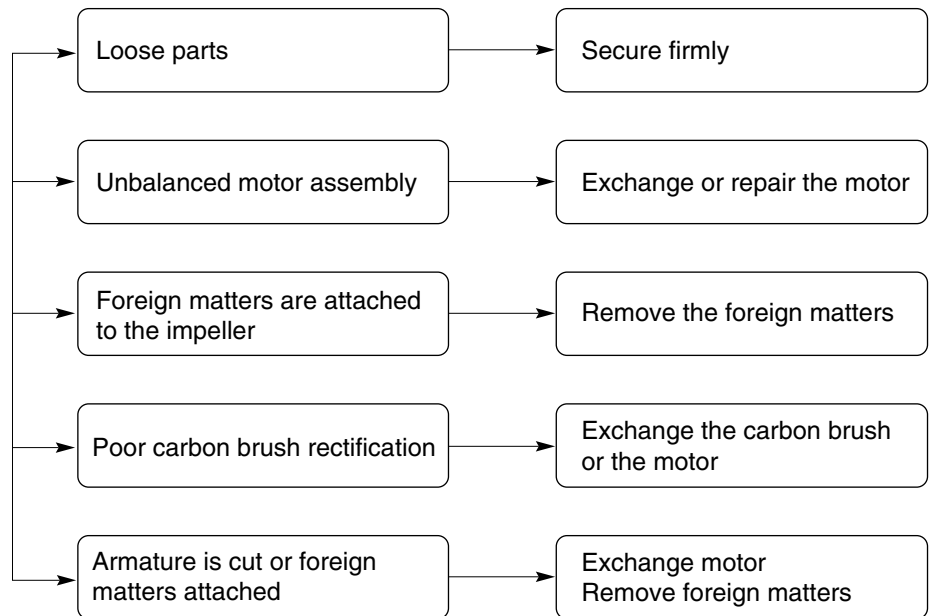
**3) SWITCH OFF BUT MOTOR RUNS.**



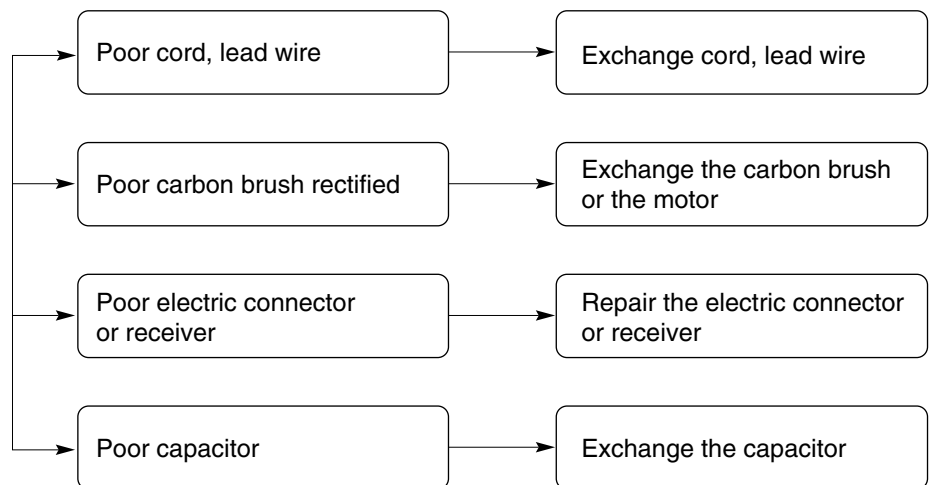
**4) WEAK SUCTION POWER**



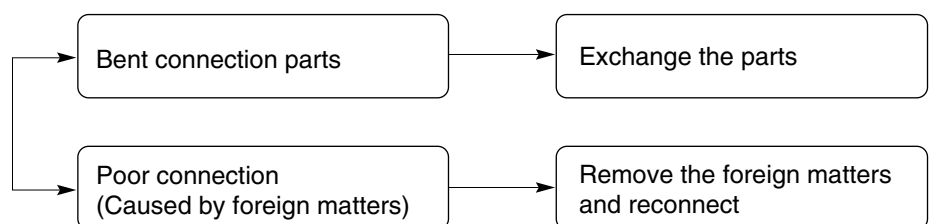
## 5) VIBRATION NOISES



## 6) RADIO, TV RECEPTION DISTURBANCE



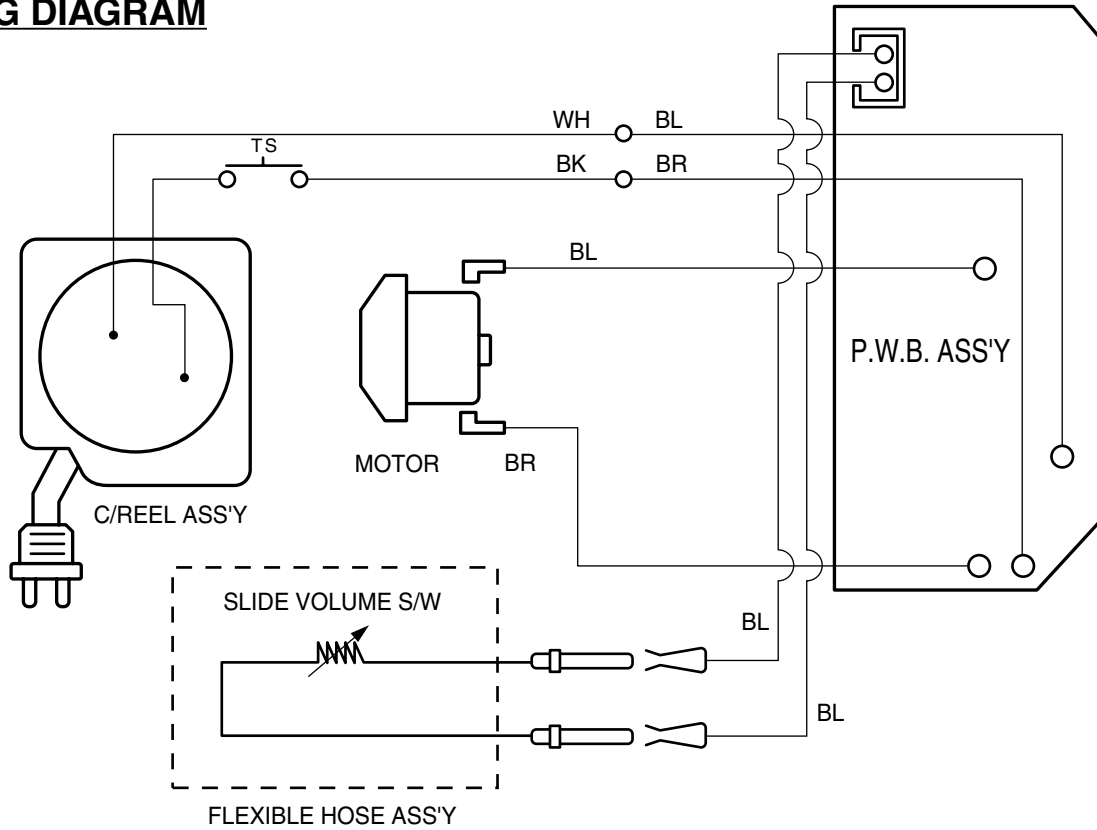
## 7) IMPROPER TUBE OR NOZZLE CONNECTION



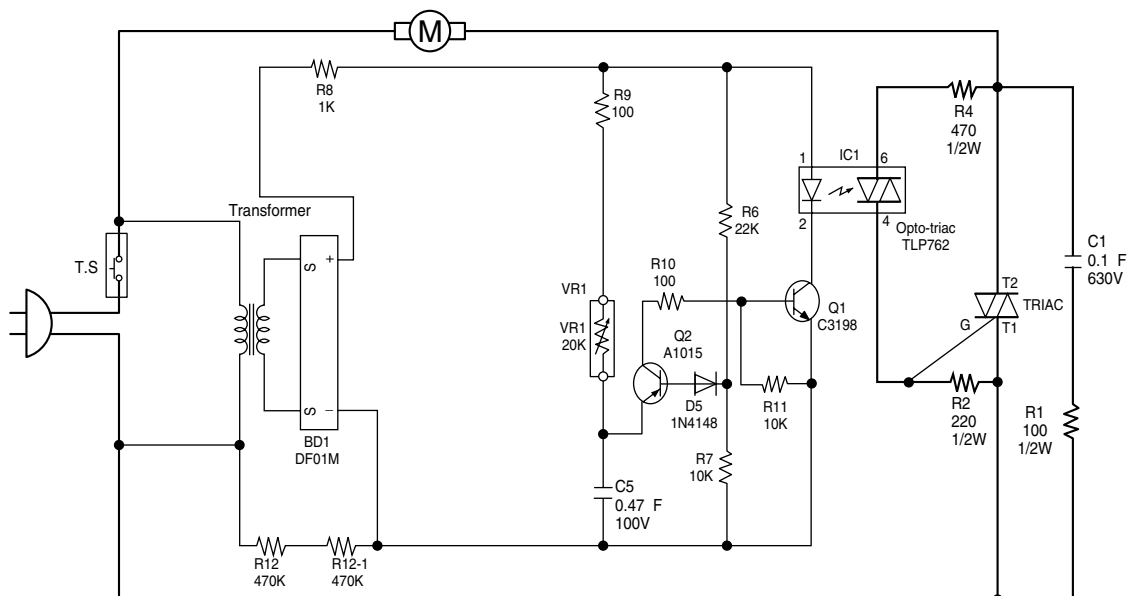
# 6. BLOCK DIAGRAM/SCHEMATIC DIAGRAM/CIRCUIT DIAGRAM

## 6.1 MODEL 721.24195S

### WIRING DIAGRAM

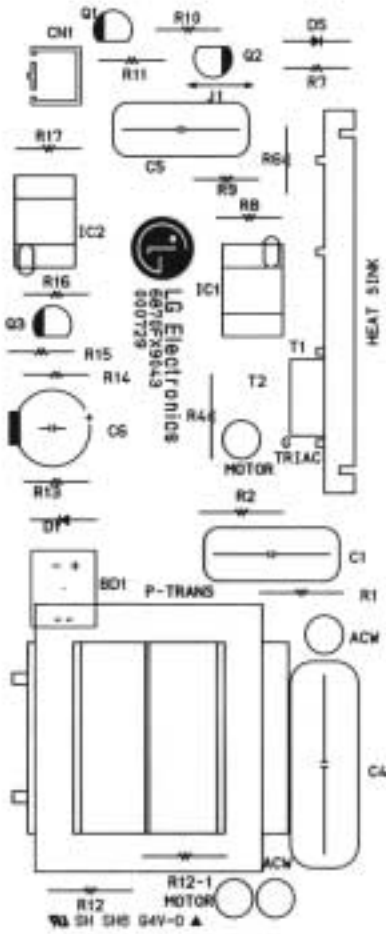


### SCHEMATIC DIAGRAM

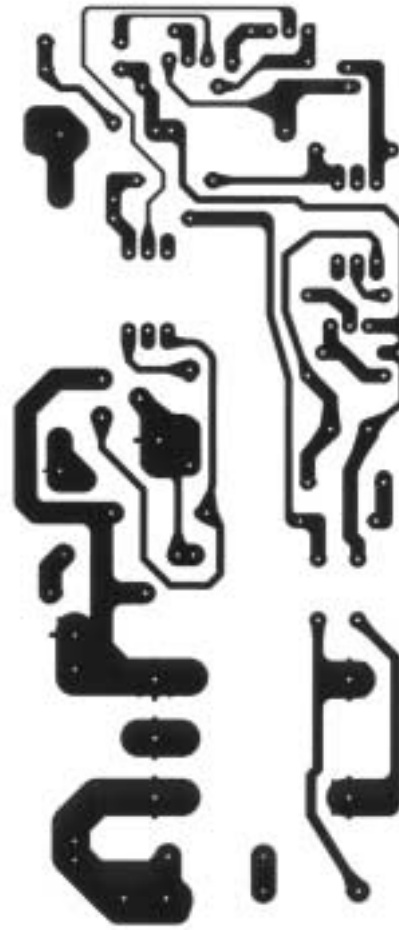


# 7.POWER AND CONTROL CIRCUIT BOARD

## 7.1 MODEL 721.24195S



COMPONENT SIDE



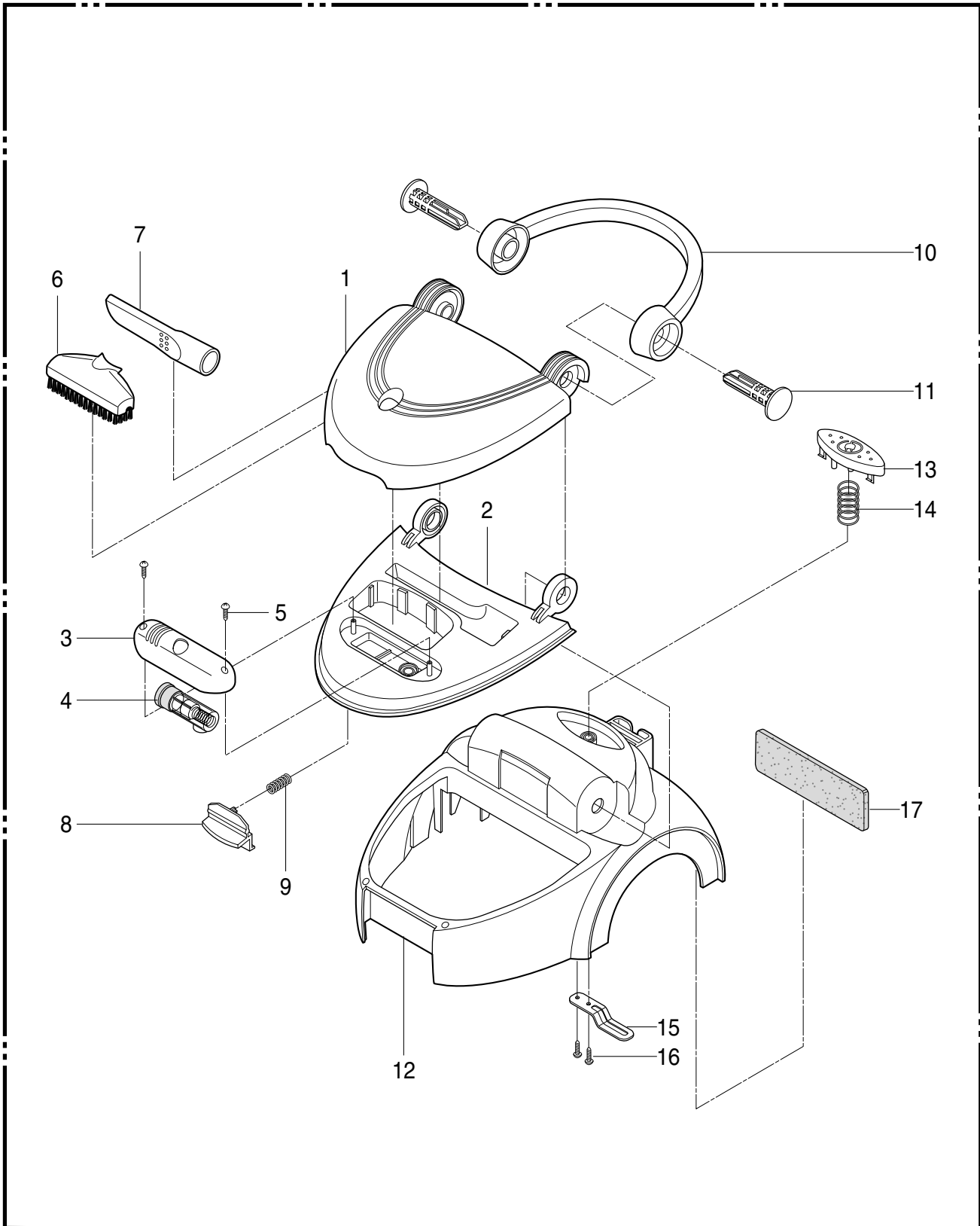
SOLDER SIDE

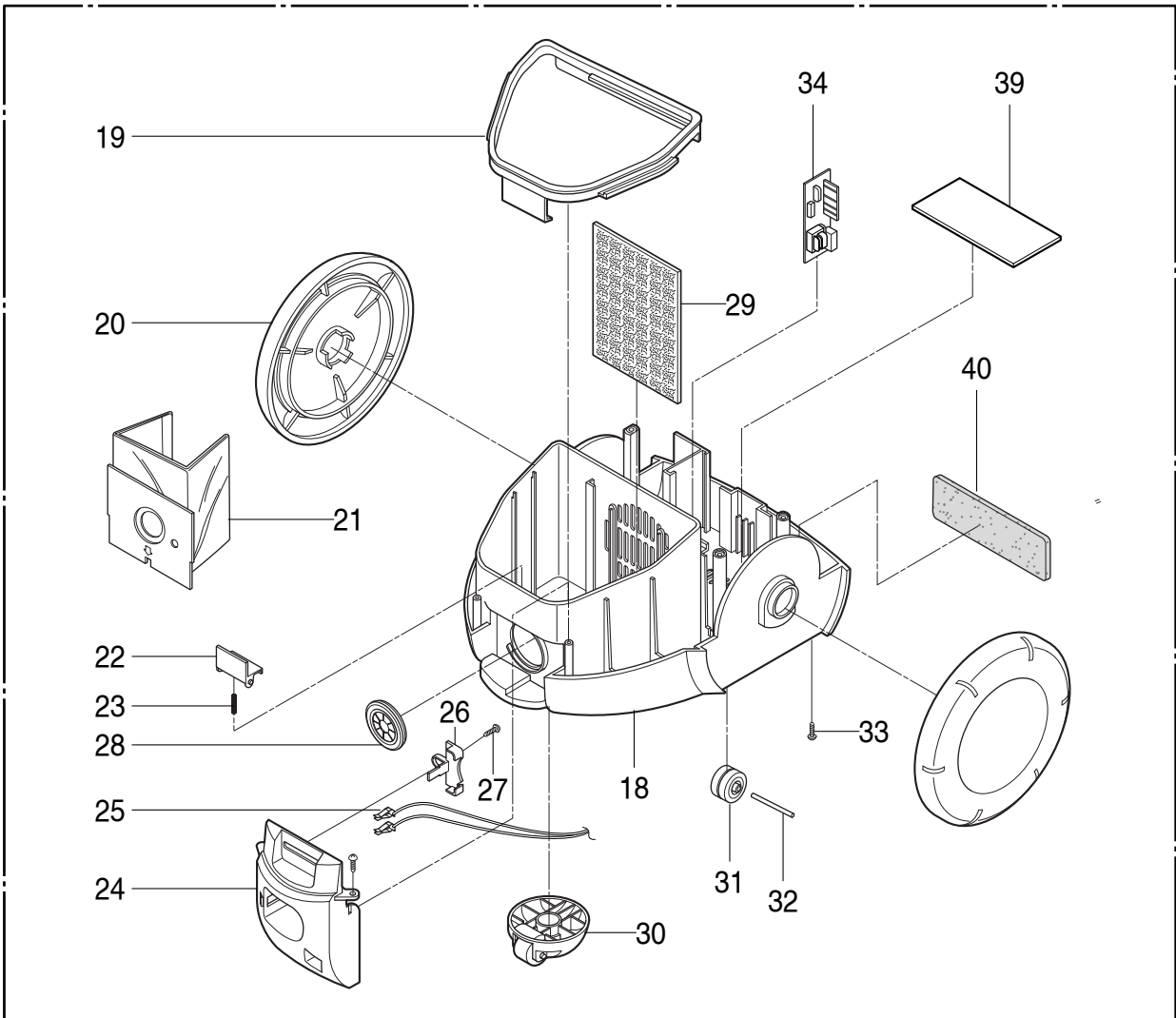
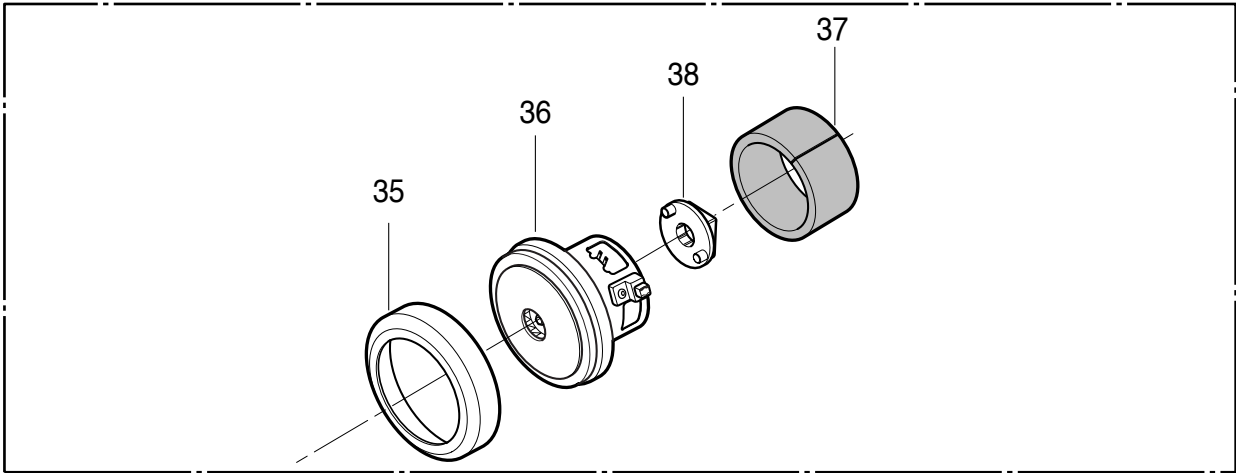
# 8.EXPLODED VIEW/REPLACEMENT PARTS LIST

## 8.1 MODEL 721.24195S

MODEL 721.24195S

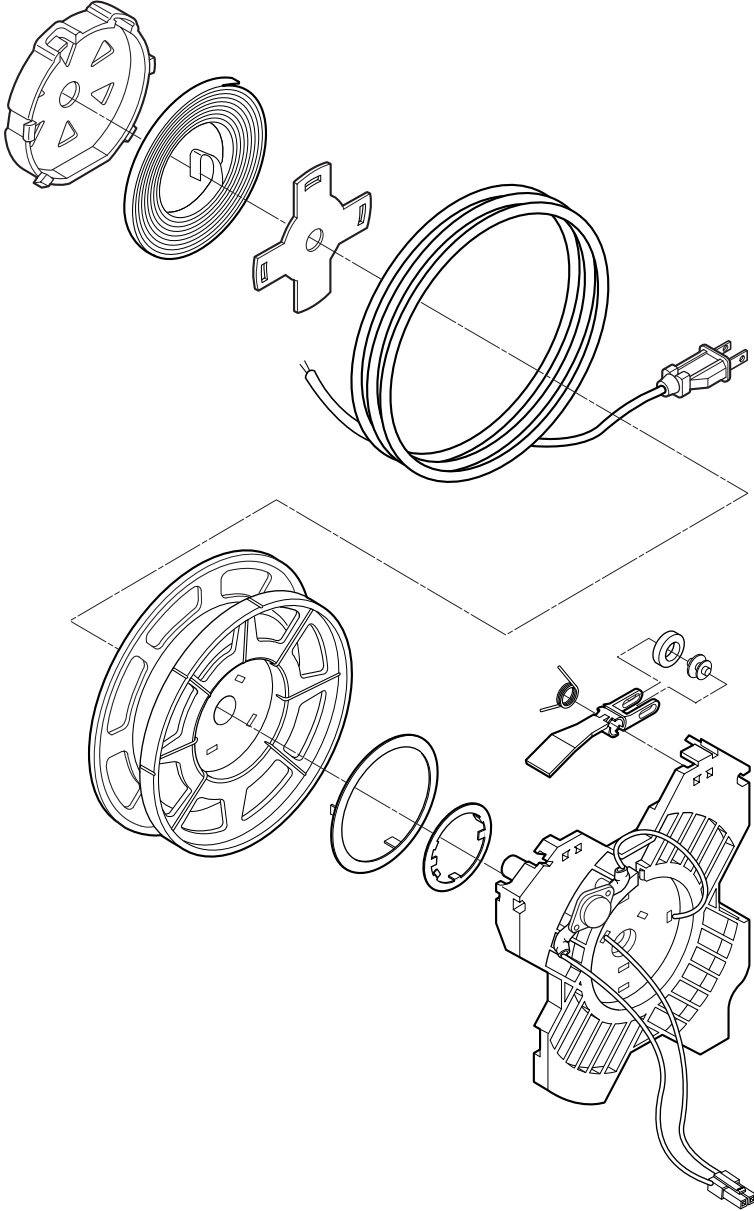
### EXPLODES VIEW

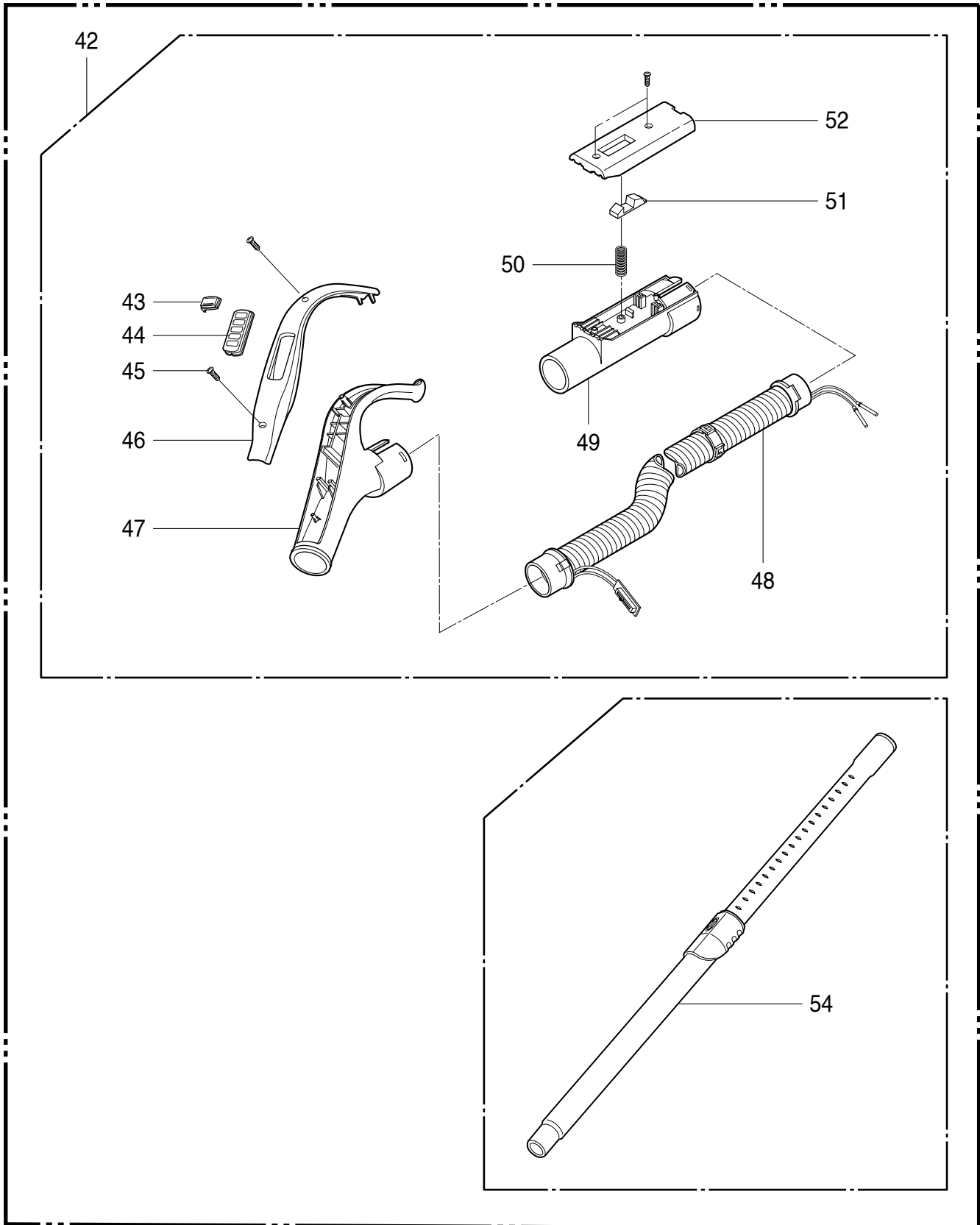


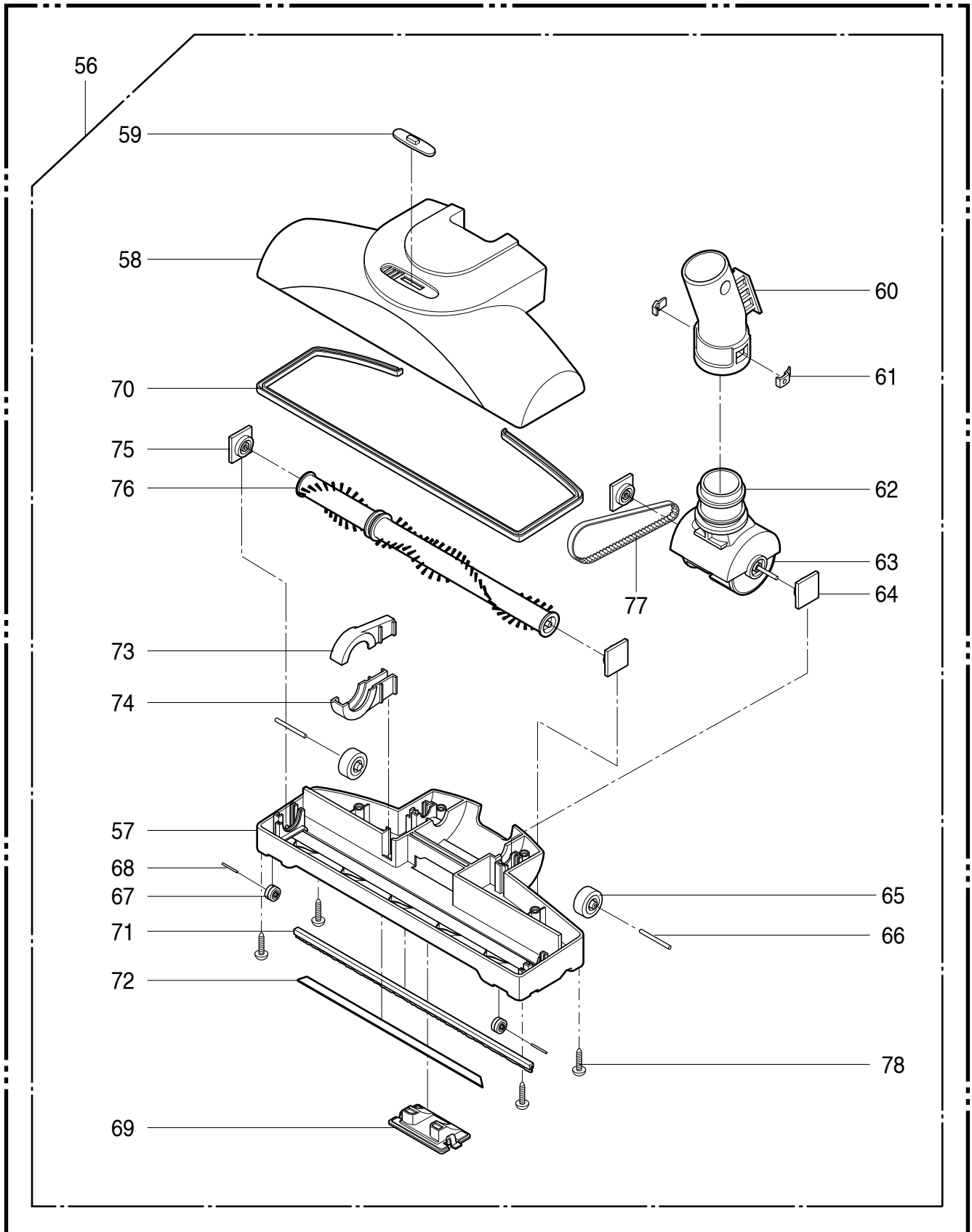




41







**REPLACEMENT PARTS LIST**

MODEL 721.24195S

LOCATION NO.	PART NO.	DESCRIPTION	REMARKS
1	3550FI1759K	ACCESSORY COVER	
2	3550FI1758H	FILTER COVER	
3	3550FI3868H	INDICATOR COVER	
4	3I23019L	INDICATOR	
5	1TPL0302418	SCREW 3*8	
6	5203FI2071A	DUST BRUSH ASS'Y	
7	5058FI3593A	CREVICE TOOL	
8	4026FI3691G	LATCH	
9	4970FI4260A	LATCH SPRING	
10	3650FI2422A	HANDLE	
11	4370FI3678A	HANDLE SHAFT	
12	3550FI1757B	BODY COVER	
13	5020FI3806B	CORD WINDING BUTTON	
14	4I70024A	CORD WINDING SPRING	
15	4510FI2441A	CORD WINDING LEVER	
16	1TPL0402818	SCREW 4*12	
17	5230FI3558B	EXHAUST FILTER	
18	3040FI1525A	BODY BASE	
19	3920FI1289A	DUST SEAL PACKING	
20	4661FI1008H	WHEEL ASS'Y	
21	*5231FI2390J	DUST BAG	
22	4480FI3752A	FILTER SETTING HOOK	
23	4I23017A	FILTER SETTING HOOK SPRING	
24	3550FI1756B	FRONT COVER	
25	3I23038G	TERMINAL PLATE ASS'Y	
26	3I23009L	TERMINAL SUPPORTER	
27	1TPL0402818	SCREW 4*12	
28	4036FI3036A	TERMINAL PACKING	
29	5230FI3248F	MOTOR SAFETY FILTER	
30	4441FI3608D	CASTER ASS'Y	
31	4I22017A	ROLLER	
32	4I22094A	ROLLER SHAFT	
33	1TPL0403318	SCREW 4*20	
34	6871FX2130G	PWB ASS'Y	
35	3920FI3766A	MOTOR MOUNT PACKING	
36	4681FI2373Y	MOTOR	
37	3940FI3646A	ABSORBING SPONGE	
38	3920FI3859A	MOTOR SEAL PACKING	
39	5230FI3557C	EXHAUST FILTER	
40	3940FI3311B	EXHAUST SPONGE	

**REPLACEMENT PARTS LIST**

MODEL 721.24195S

LOCATION NO.	PART NO.	DESCRIPTION	REMARKS
41	4687FI1468H	CORD WINDING ASS'Y	
42	AEM30953708	HOSE ASS'Y	
43	4940FI3431A	SLIDE KNOB	
44	3500FI3617B	SWITCH BOARD	
45	1TPL0302416	SCREW 3*8	
46	3550FI1511D	HANDLE COVER	
47	3650FI1474F	GRIP HANDLE	
48	4930FI2360T	HOSE	
49	5200FI2357M	FITTING PIPE	
50	4I23028A	HOOK SPRING	
51	3I23013J	FITTING HOOK	
52	3550FI2358J	F/PIPE COVER	
53	5201FI2485A	TELESCOPIC WAND	
55	5249FI1414E	NOZZLE ASSEMBLY, TURBINE	
57	3040FI1502B	NOZZLE BASE	
58	3550FI1637B	NOZZLE COVER	
59	4940FI3736A	PILE ADJUSTMENT	
60	5200FI2497B	SUCTION PIPE	
61	1KZZFI3001B	KEY	
62	4930FI2452B	SUCTION PIPE HOLDER	
63	5901FI2001A	FAN ASSEMBLY	
64	4280FI3003A	BEARING BALL	
65	4581FI3001A	ROLLER ASSY	
66	4370FI3669A	SHAFT	
67	4581FI3002A	ROLLER ASSY	
68	4370FI3670A	SHAFT	
69	3550FI2540B	COVER FLOW	
70	4820FI2399B	NOZZLE BUMPER	
71	5882FI2001A	SWEEPER	
72	4766FI3709A	FELT	
73	3740FI3712A	PROTECTOR(MECH)BELT	
74	3740FI3711A	PROTECTOR(MECH)BELT	
75	4280FI3004A	BEARING BALL	
76	5973FI2001A	BRUSH	
77	4400FI3349A	BELT	
78	1TPL0403116	SCREW 4*16	

# MEMO

---

# MEMO

---

# MEMO

---



