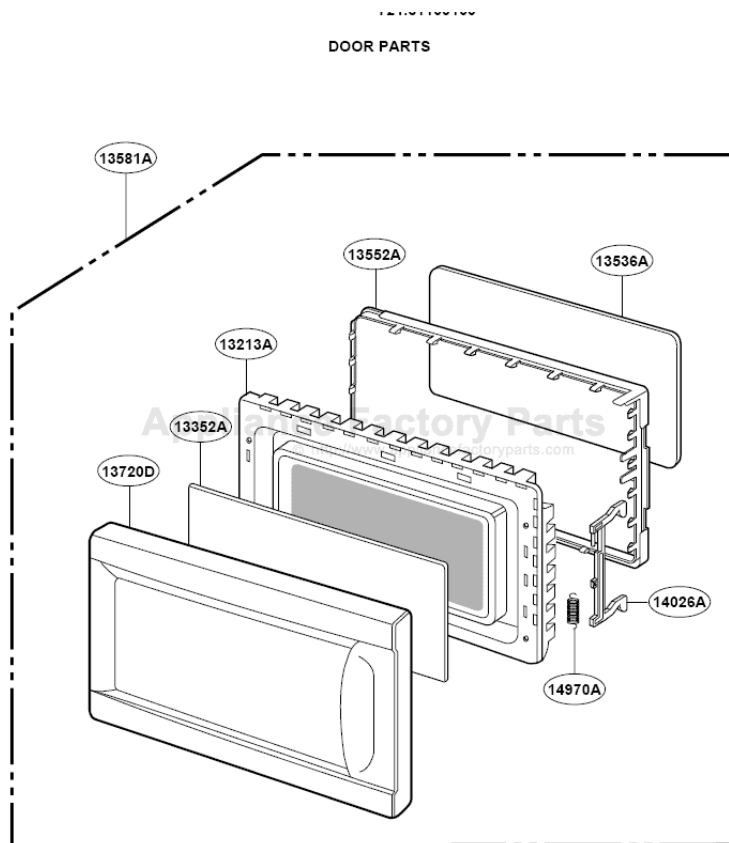


This Owner's Manual is provided and hosted by [Appliance Factory Parts](http://ApplianceFactoryParts.com).



Kenmore 721.61109100 Owner's Manual

[Shop genuine replacement parts for Kenmore
721.61109100](#)

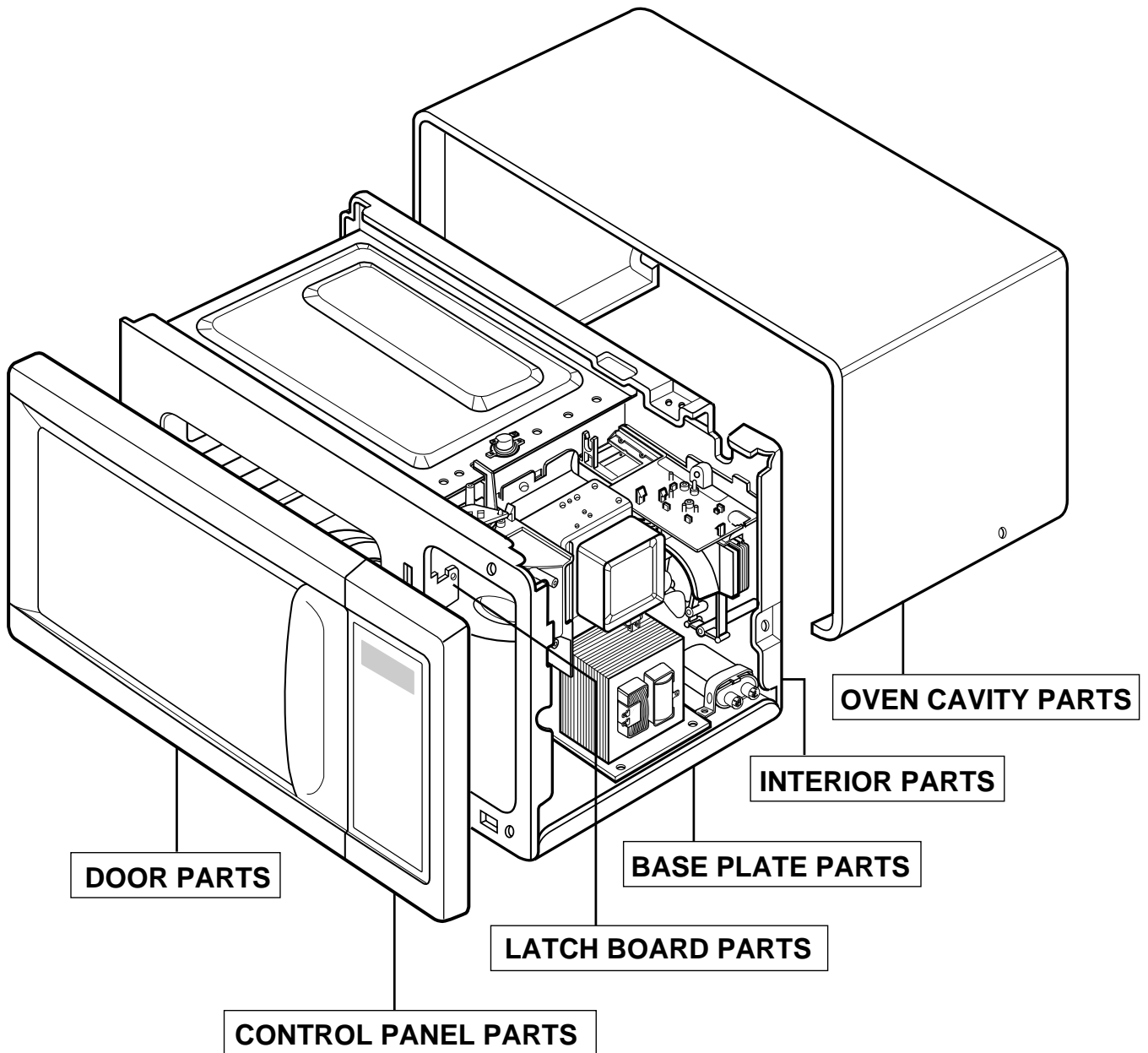


[Find Your Kenmore Microwave Parts - Select From 532 Models](#)

----- Manual continues below -----

**KENMORE MICROWAVE OVEN
MODEL NO. 721.61102100
721.61109100**

INTRODUCTION

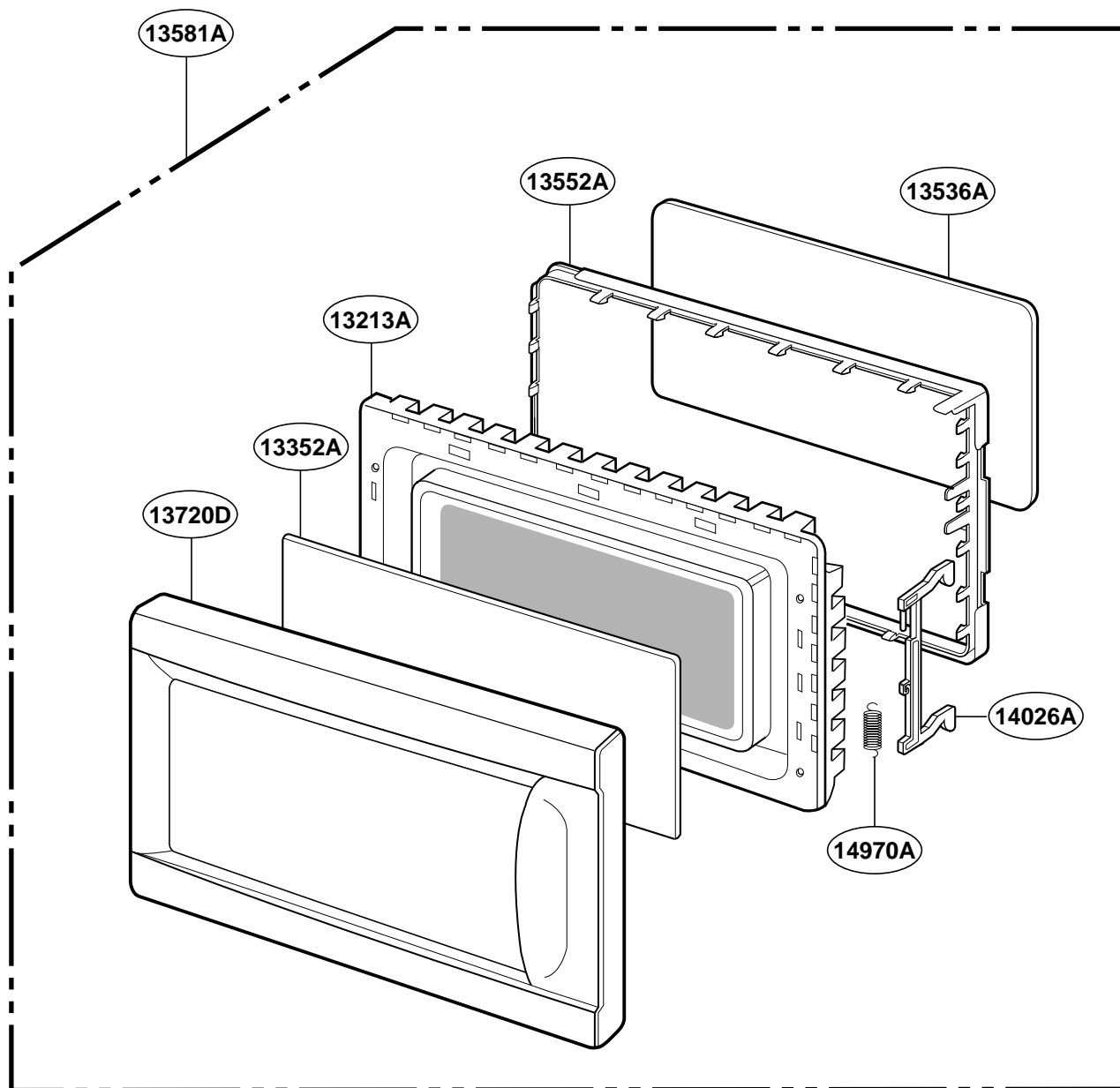


*** ALL SERVICE ON MICROWAVE OVENS SHOULD BE PERFORMED BY A QUALIFIED TECHNICIAN USING APPROVED TESTING EQUIPMENT. CUSTOMERS SHOULD NOT ATTEMPT TO REPLACE PARTS IDENTIFIED BY A TRIPLE ASTERISK(***)

January. 2002

KENMORE MICROWAVE OVEN
MODEL NO. 721.61102100
721.61109100

DOOR PARTS

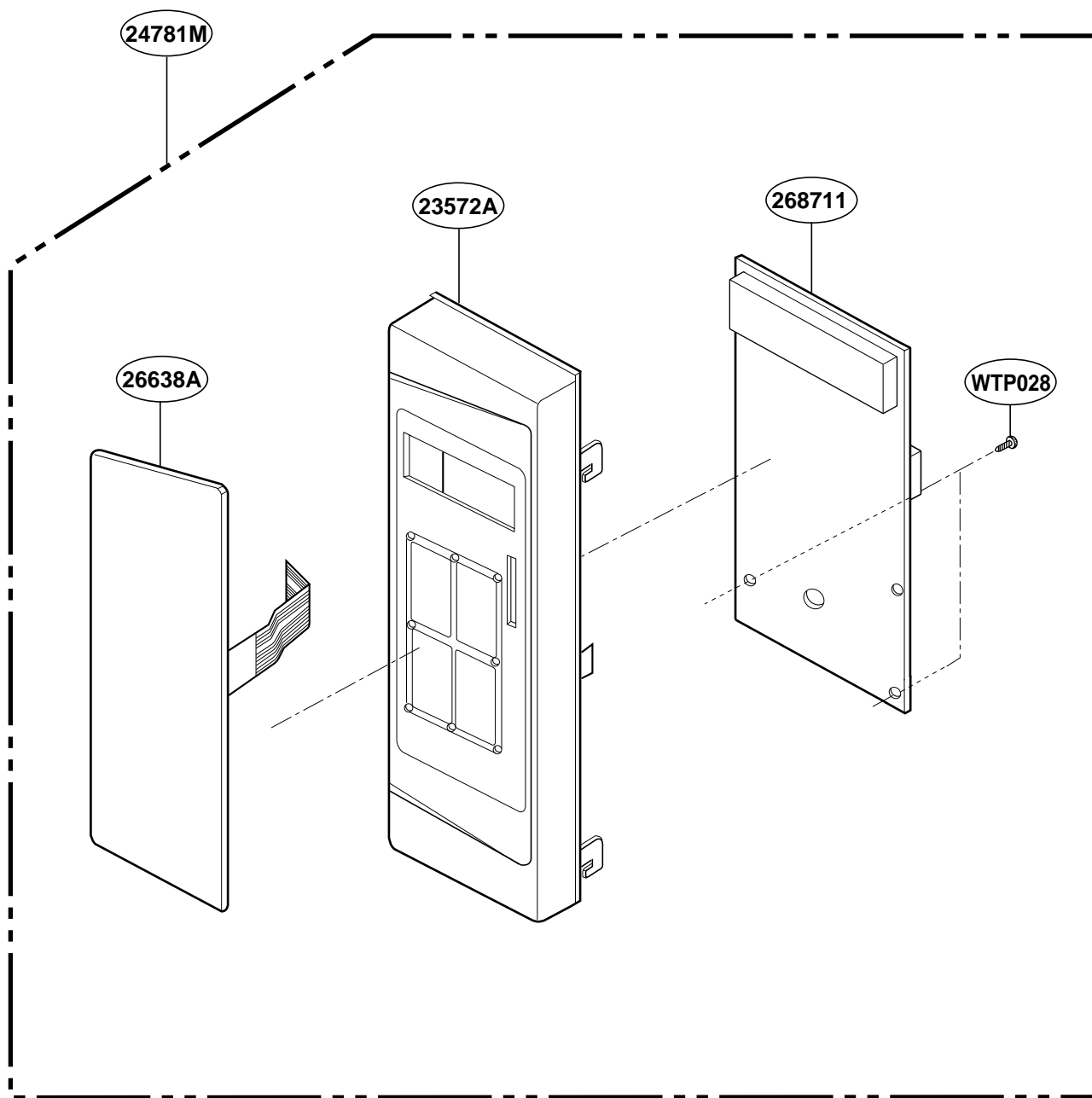


*** ALL SERVICE ON MICROWAVE OVENS SHOULD BE PERFORMED BY A QUALIFIED TECHNICIAN USING APPROVED TESTING EQUIPMENT. CUSTOMERS SHOULD NOT ATTEMPT TO REPLACE PARTS IDENTIFIED BY A TRIPLE ASTERISK(***)

January. 2002

KENMORE MICROWAVE OVEN
MODEL NO. 721.61102100
721.61109100

CONTROLLER PARTS

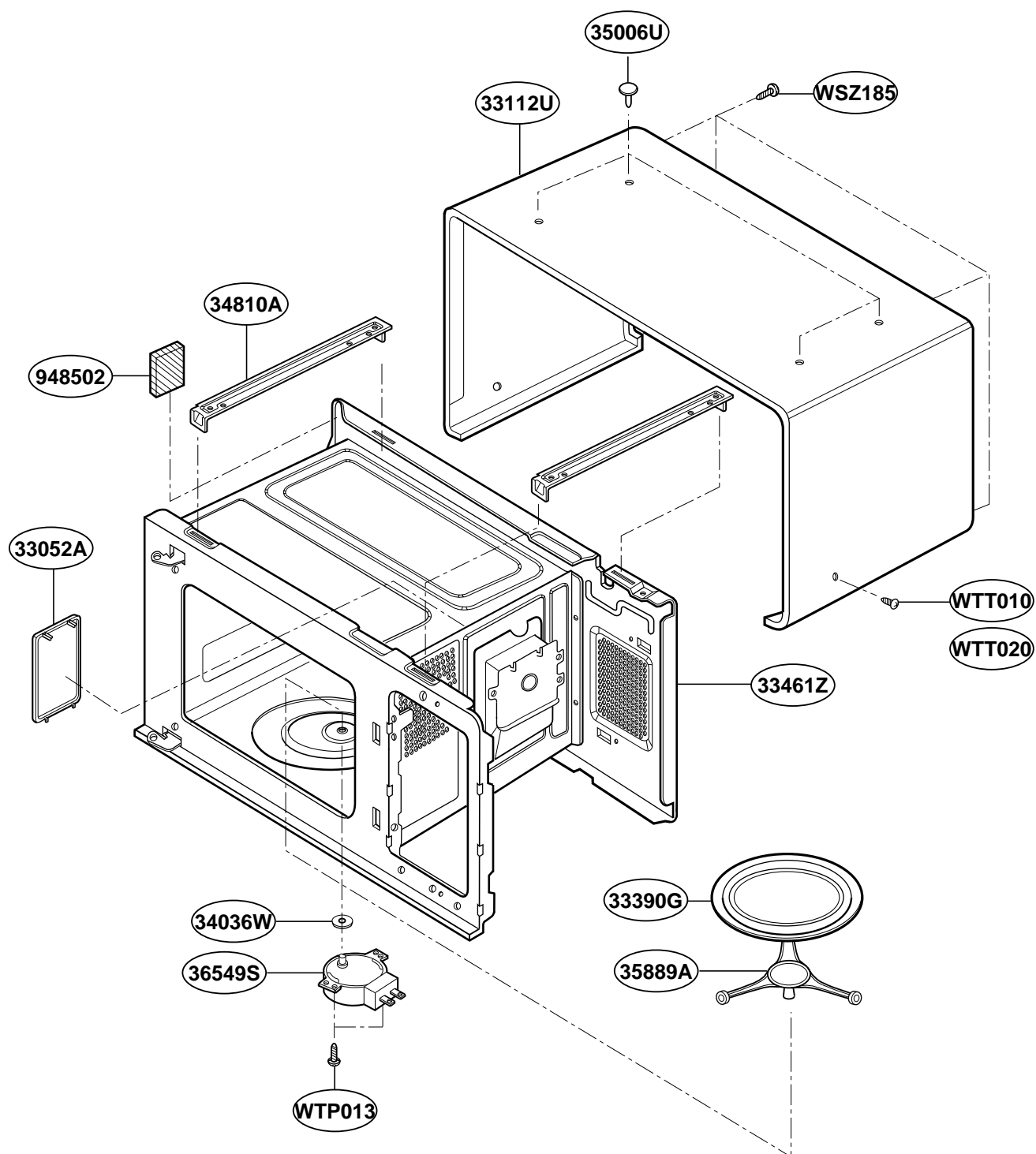


*** ALL SERVICE ON MICROWAVE OVENS SHOULD BE PERFORMED BY A QUALIFIED TECHNICIAN USING APPROVED TESTING EQUIPMENT. CUSTOMERS SHOULD NOT ATTEMPT TO REPLACE PARTS IDENTIFIED BY A TRIPLE ASTERISK(***)

January. 2002

KENMORE MICROWAVE OVEN
MODEL NO. 721.61102100
721.61109100

OVEN CAVITY PARTS

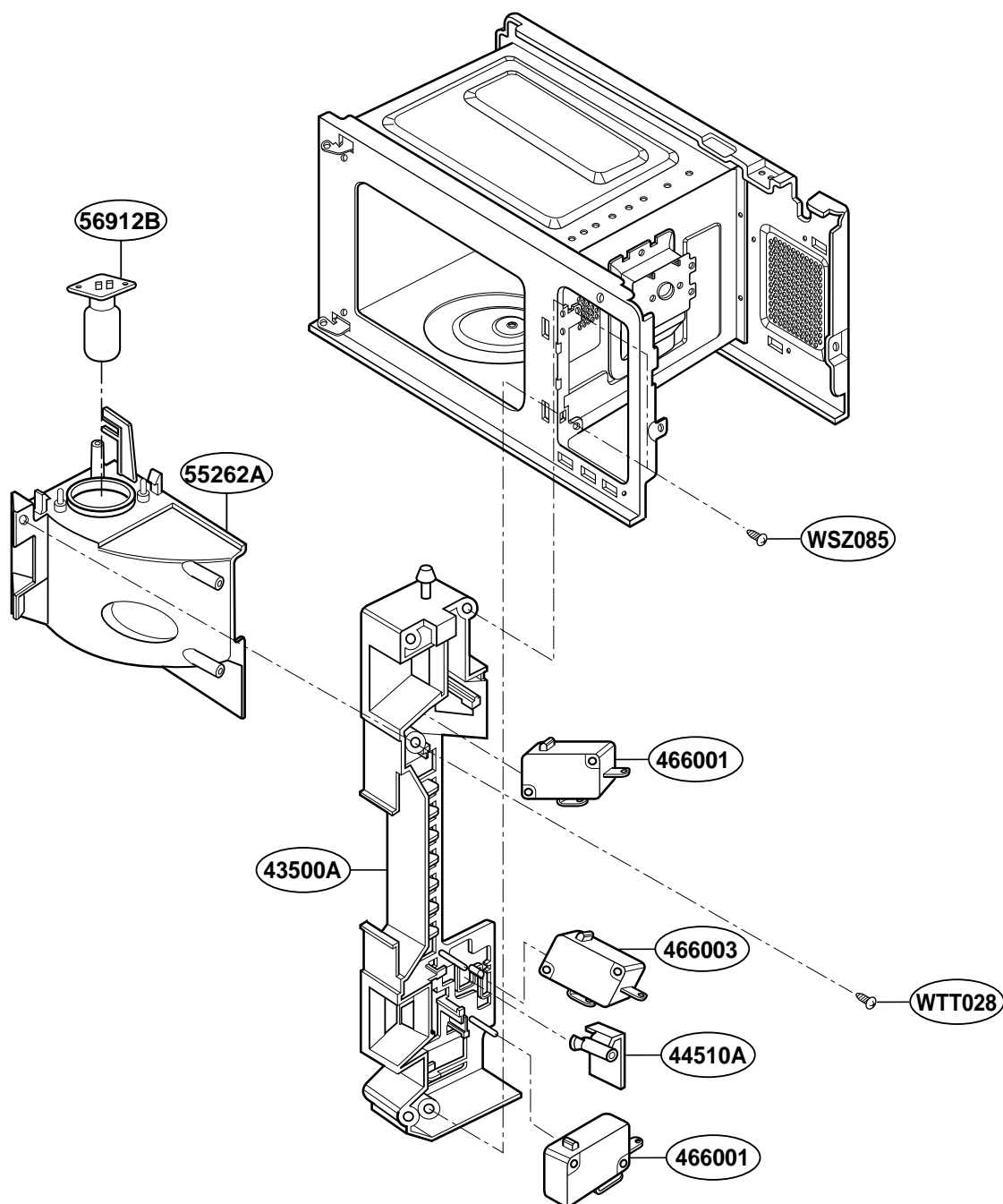


*** ALL SERVICE ON MICROWAVE OVENS SHOULD BE PERFORMED BY A QUALIFIED TECHNICIAN USING APPROVED TESTING EQUIPMENT. CUSTOMERS SHOULD NOT ATTEMPT TO REPLACE PARTS IDENTIFIED BY A TRIPLE ASTERISK(***)

January. 2002

KENMORE MICROWAVE OVEN
MODEL NO. 721.61102100
721.61109100

SUCTION GUIDE PARTS

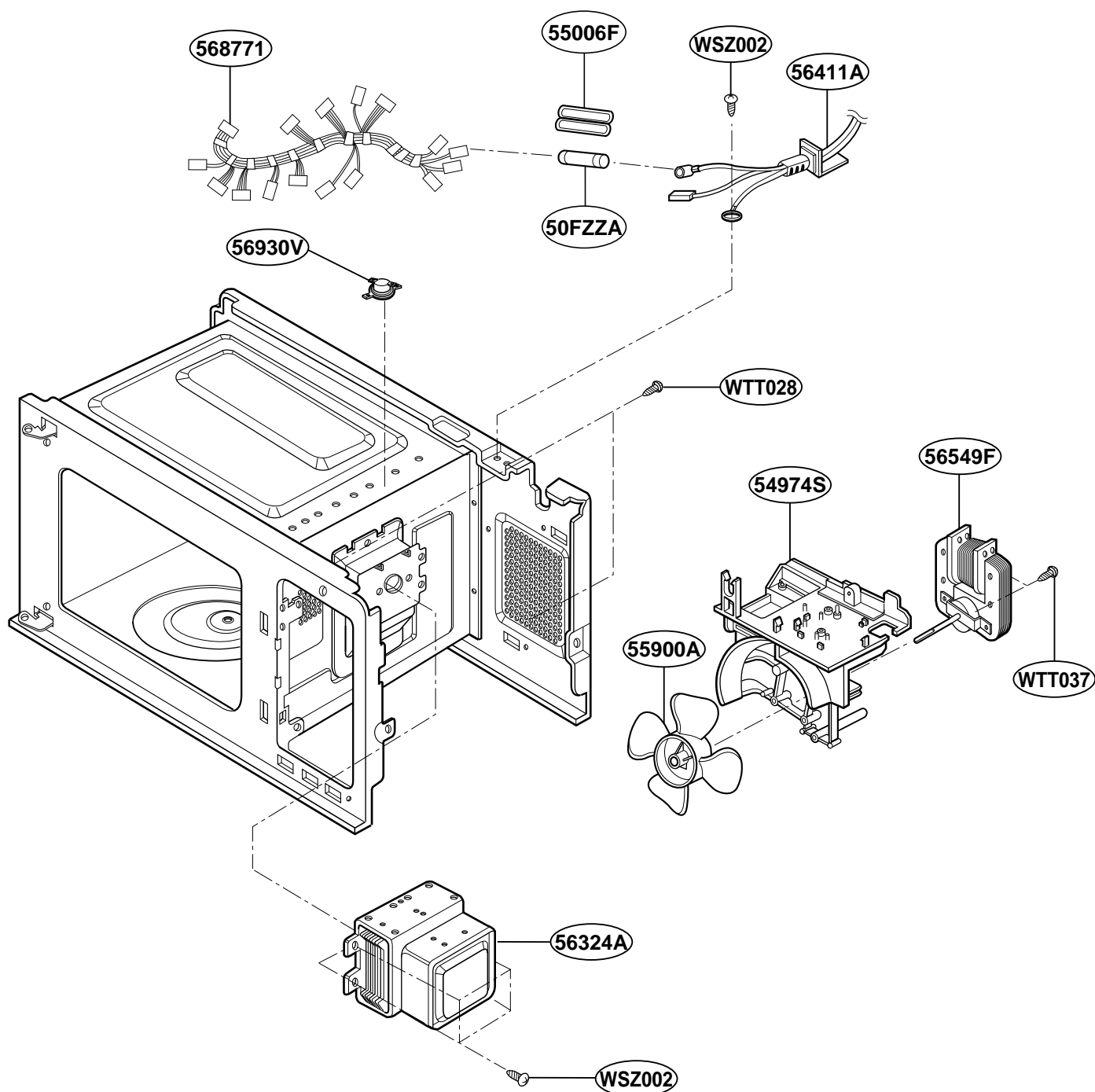


*** ALL SERVICE ON MICROWAVE OVENS SHOULD BE PERFORMED BY A QUALIFIED TECHNICIAN USING APPROVED TESTING EQUIPMENT. CUSTOMERS SHOULD NOT ATTEMPT TO REPLACE PARTS IDENTIFIED BY A TRIPLE ASTERISK(***)

January. 2002

KENMORE MICROWAVE OVEN
MODEL NO. 721.61102100
721.61109100

OVEN INTERIOR PARTS

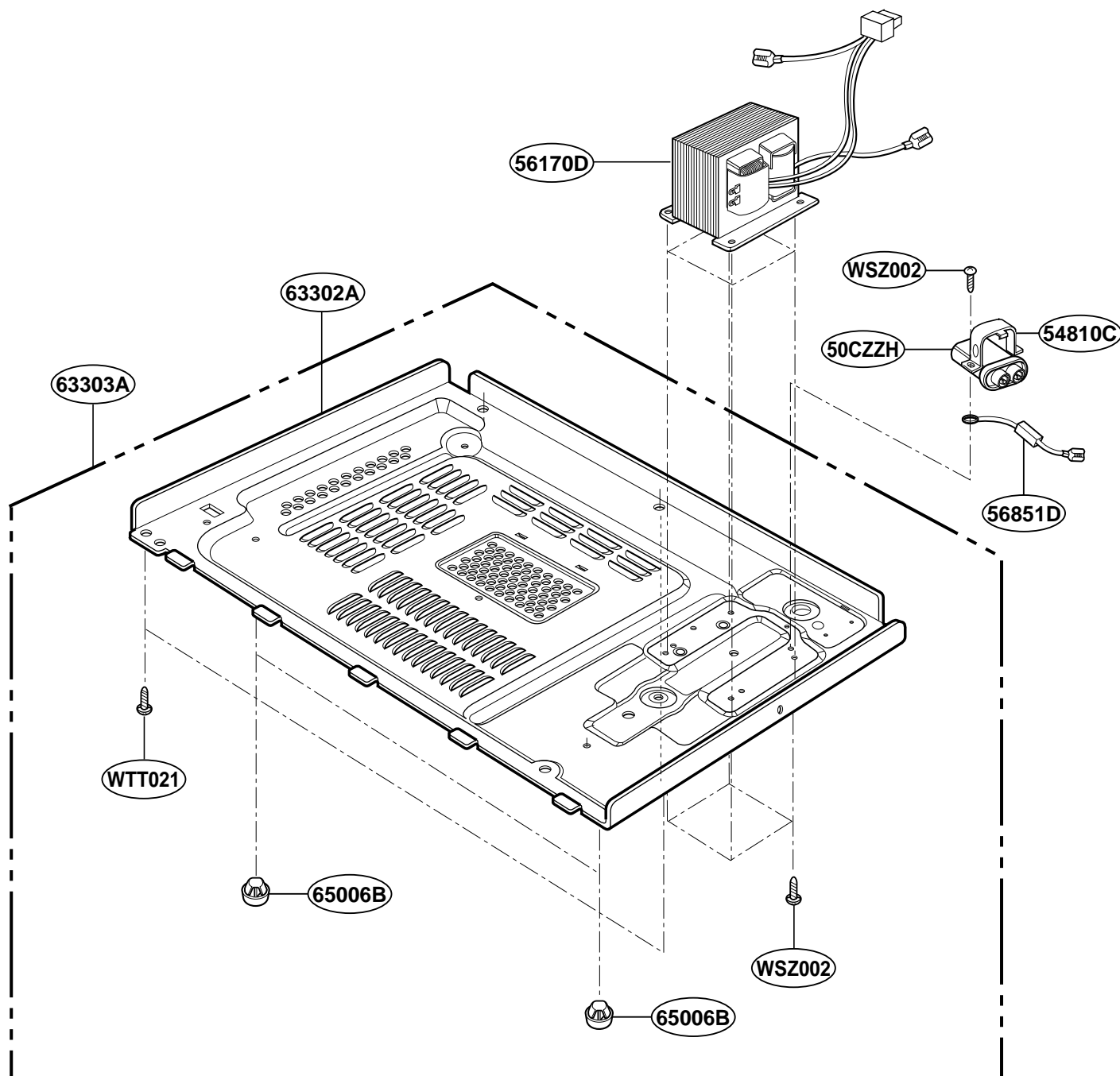


*** ALL SERVICE ON MICROWAVE OVENS SHOULD BE PERFORMED BY A QUALIFIED TECHNICIAN USING APPROVED TESTING EQUIPMENT. CUSTOMERS SHOULD NOT ATTEMPT TO REPLACE PARTS IDENTIFIED BY A TRIPLE ASTERISK(***)

January. 2002

KENMORE MICROWAVE OVEN
MODEL NO. 721.61102100
721.61109100

BASE PLATE PARTS



*** ALL SERVICE ON MICROWAVE OVENS SHOULD BE PERFORMED BY A QUALIFIED TECHNICIAN USING APPROVED TESTING EQUIPMENT. CUSTOMERS SHOULD NOT ATTEMPT TO REPLACE PARTS IDENTIFIED BY A TRIPLE ASTERISK(***)

January. 2002