

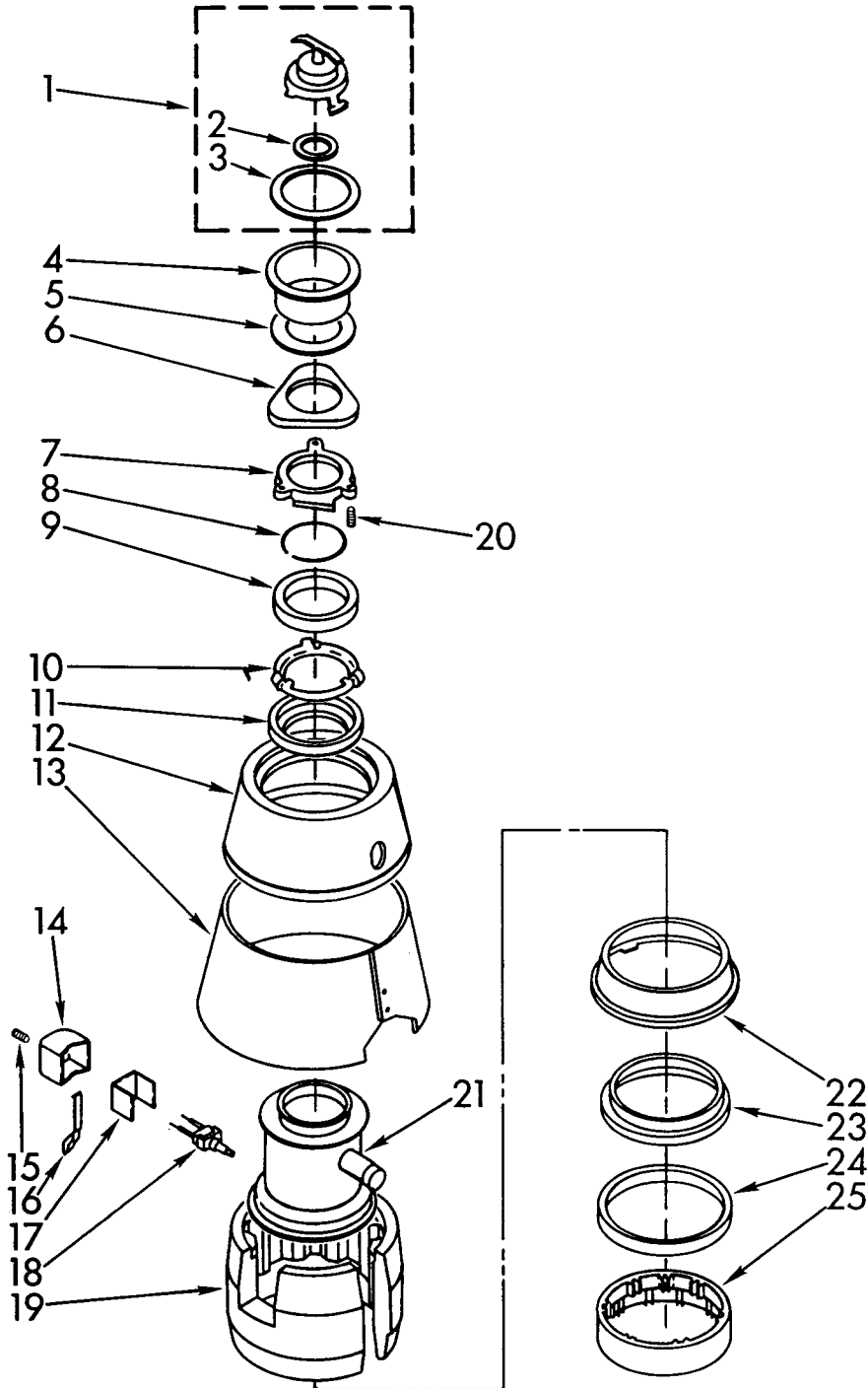
PARTS LIST FOR

KitchenAid®

DISPOSER

**MODEL
KBDS250X**

UPPER HOUSING AND FLANGE PARTS



10-92 Litho in U.S.A.

KitchenAid

ST. JOSEPH, MI 49085

© 1991, 1992 KITCHENAID



Part No. 4211560 Rev. A

10-92

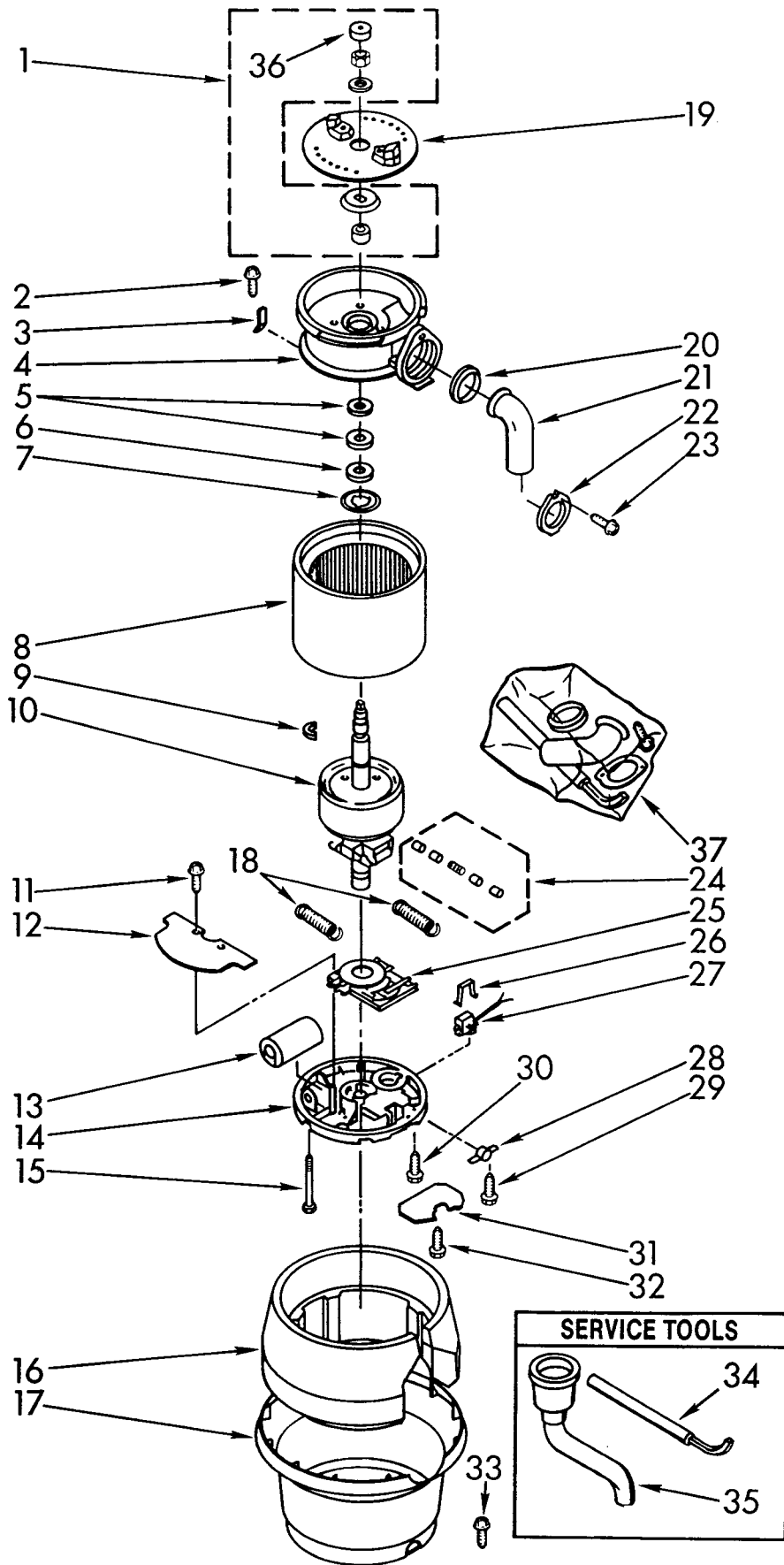
1	4211409	Lock Stopper Assembly
2	4211355	Gasket, Stopper (Inner)
3	4211410	Gasket, Stopper (Outer)
4	4211301	Flange, Strainer
5	4211302	Gasket, Strainer
6	4211303	Flange, Backup
7	4211304	Flange, Mounting
8	4211306	Ring, Retainer
9	4211411	Gasket, Mounting
10	4211308	Flange, Body
11	4211359	Gasket, Body
12	4211443	Shell Assembly, Trim (Top)
13	4211413	Band Assembly, Trim
14	4211417	Cover, Switch
15	4211418	Screw, Tapping (Switch Cover)
16	4211419	Bracket, Wire Cover
17	4211416	Insulation, Switch Cover
18	4211415	Switch, Push Button
19	4211420	Insulation, Top
20	4211305	Screw, Backup (3)
21	4211414	Container, Body Assembly (Includes Sound Insulation)
22	4211421	Body, Lower
23	4211365	Gasket, Shredder
24	4211366	Insulation, Sound
25	4211367	Shredder, Stationary

Following Parts Not Illustrated

LIT4211451	Guide, Use And Care
LIT4211452	Instructions, Installation
LIT4211560	Repair Parts List

LOWER HOUSING AND MOTOR PARTS

For Model: KBDS250X



1	4211311	Kit, Sleeve And Seal (Includes Nut, Washer, Slinger & Sleeve)
2	4211329	Screw, Shield
3	4211422	Shield, Wire Cover
4	4211535	End Bell Assembly (Upper)
5	4211405	Washer, Phenolic (2)
6	4211406	Washer, Rubber
7	4211493	Washer, Thrust
8	4211375	Stator Assembly
9	4211376	Ring, C
10	4211494	Rotor And Shaft Assembly
11	4211380	Screw (4)
12	4211381	Insulation, Shield
13	4211385	Capacitor
14	4211470	End Frame Assembly (Lower)
15	4211389	Bolt, Thru (4)
16	4211393	Insulation, Bottom
17	4211486	Shell Assembly,
18	4211378	Spring(2) (Centrifugal Actuator)
19	4211368	Shredder Assembly, Rotating
20	4211344	Gasket, Tailpipe
21	4211370	Tailpipe
22	4211345	Flange, Tailpipe
23	4211346	Screw, Tailpipe
24	4211468	Transfer Assembly
25	4211469	Switch Assembly (Start)
26	4211383	Clip, Overload
27	4211384	Overload, Protector
28	4211387	Clamp, BX
29	4211388	Screw, Clamp (2)
30	4211390	Screw, Ground
31	4211391	Cover, Terminal
32	4211380	Screw
33	4211395	Screw, Tapping
34	4211435	Emergency, Wrench Assembly
35	4211396	Adapter, Sink Assembly
36	4211341	plug
37	4211567	Kit, Installation (Includes Nos. 20, 21, 22, 23, 34, Instructions and Use and Care Guide