



**SPLIT TYPE
ROOM AIR CONDITIONER
WALL MOUNTED type**

**SERVICE
MANUAL**

Models

Indoor unit	Outdoor unit
MW18C3F	MR18C3F

CONTENTS

SPECIFICATIONS	1
OUTLINE AND DIMENSIONS.....	2
REFRIGERANT SYSTEM DIAGRAM	3
CIRCUIT DIAGRAM	4
INDOOR PCB CIRCUIT DIAGRAM	5
OUTDOOR PCB CIRCUIT DIAGRAM	8
ERROR CONTENTS.....	10
DISASSEMBLY ILLUSTRATION.....	11
PARTS LIST	14
STANDARD ACCESSORIES.....	16

SPECIFICATIONS

TYPE	COOLING ONLY INVERTER
INDOOR UNIT	MW18C3F
OUTDOOR UNIT	MR18C3F
COOLING CAPACITY	18,000 Btu/h (5.28 kW)

ELECTRICAL DATA

POWER SOURCE	208 - 230 V
FREQUENCY	60 Hz
RUNNING CURRENT	7.7 A
INPUT WATTS	1.73 kW
E.E.R.	3.05 kW /kW
MOISTURE REMOVAL	5.9 Pt/h (2.8 L/hr)
AIR CIRCULATION -High	412 cfm (700 m3/hr)

COMPRESSOR

TYPE	Hermetic type, 4 pole, 3 phase, DC inverter motor, Rotary
DISCRIMINATION	DA130A1F-25F
REFRIGERANT R410A	2-9/16 lbs. (1,150 g)

FAN MOTOR

POWER SOURCE	208 - 230 V	
INDOOR UNIT	HIGH-SPEED	1,480 r.p.m.
	MED-SPEED	1,260 r.p.m.
	LOW-SPEED	1,040 r.p.m.
	QUIET	850 r.p.m.
OUTDOOR UNIT	860 r.p.m.	

DIMENSIONS

INDOOR UNIT	H x W x D	10-13/16 x 31-1/8 x 8-7/16 inch
		275 x 790 x 215 mm
OUTDOOR UNIT	H x W x D	22-3/4 x 31-1/8 x 11-13/16 inch
		578 x 790 x 300 mm

WEIGHT

INDOOR UNIT	Gross / Net	26 lbs. / 20 lbs. (12 kg / 9 kg)
OUTDOOR UNIT	Gross / Net	97 lbs. / 88 lbs. (44 kg / 40 kg)

NOISE LEVEL

INDOOR UNIT	HIGH	44 dB
	MED	38 dB
	LOW	32 dB
	QUIET	25 dB
OUTDOOR UNIT		50 dB

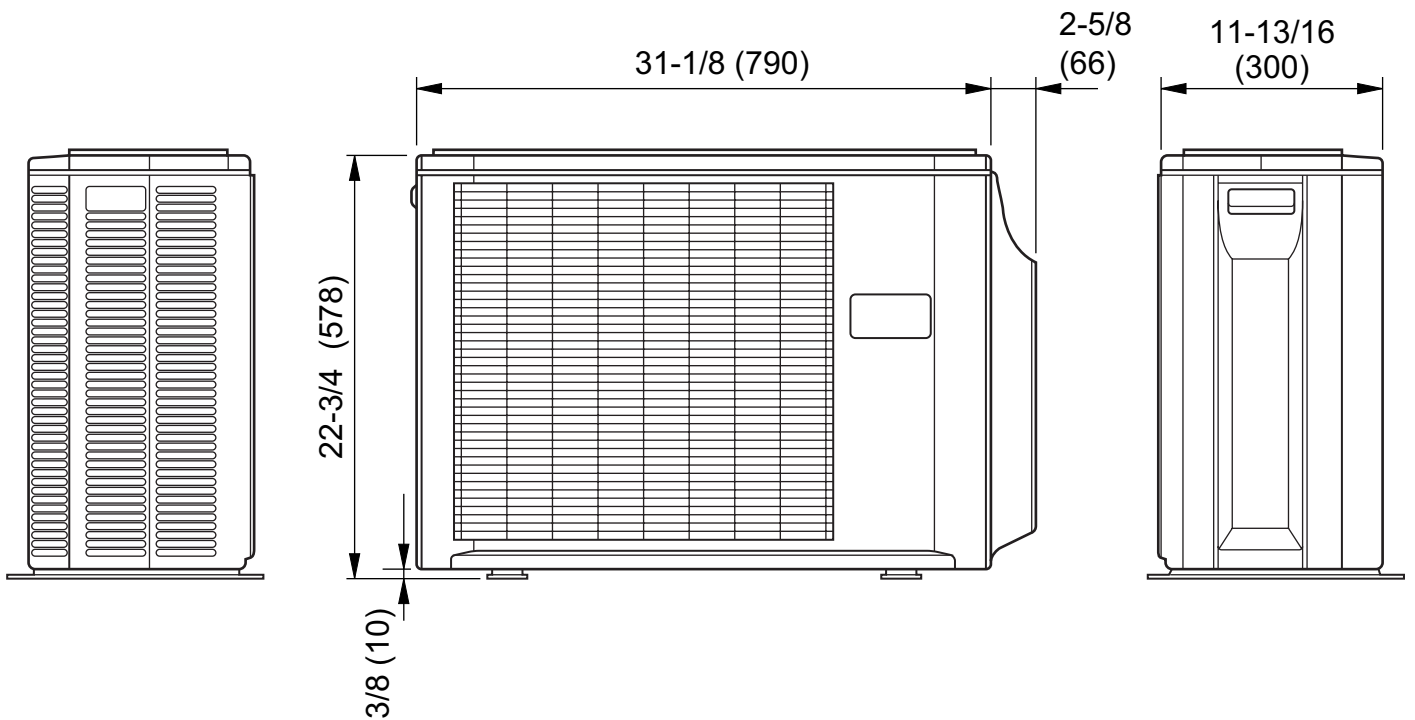
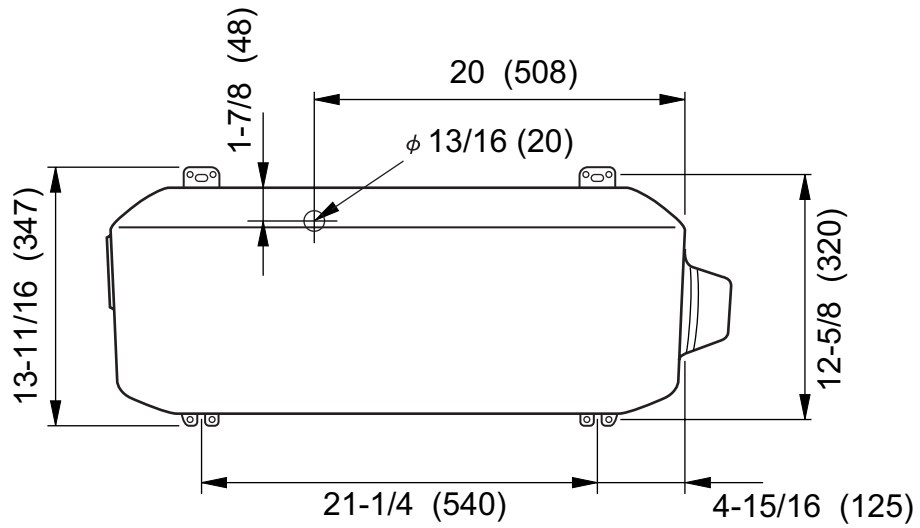
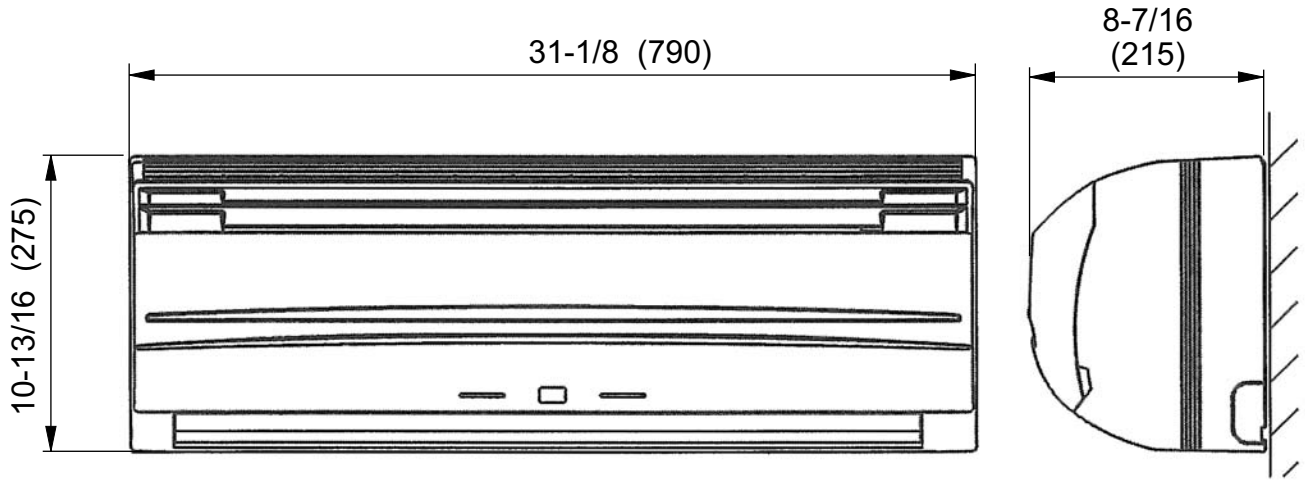
REFRIGERANT (R410A)

Pipe Length	49 ft. (15 m)	2-9/16 lbs. (1,150 g)
FULL CHARGE	66 ft. (20 m)	2-3/4 lbs. (1,250 g)
ADDITIONAL REFRIGERANT		3/16 oz./ft. (20 g/m)

DIMENSIONS

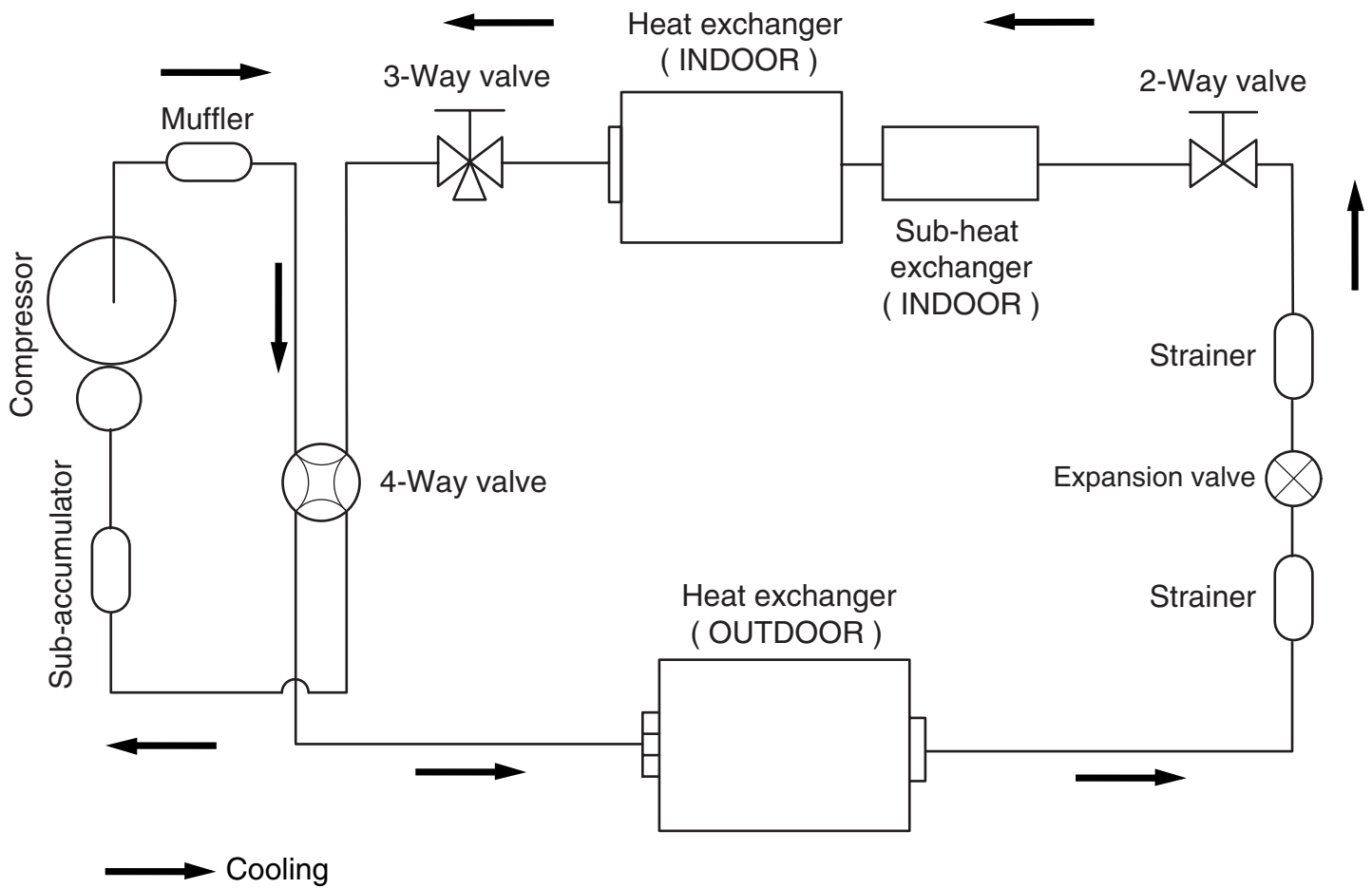
Models : MW18C3F / MR18C3F

unit : inch (mm)



REFRIGERANT SYSTEM DIAGRAM

Model : MW18C3F / MR18C3F



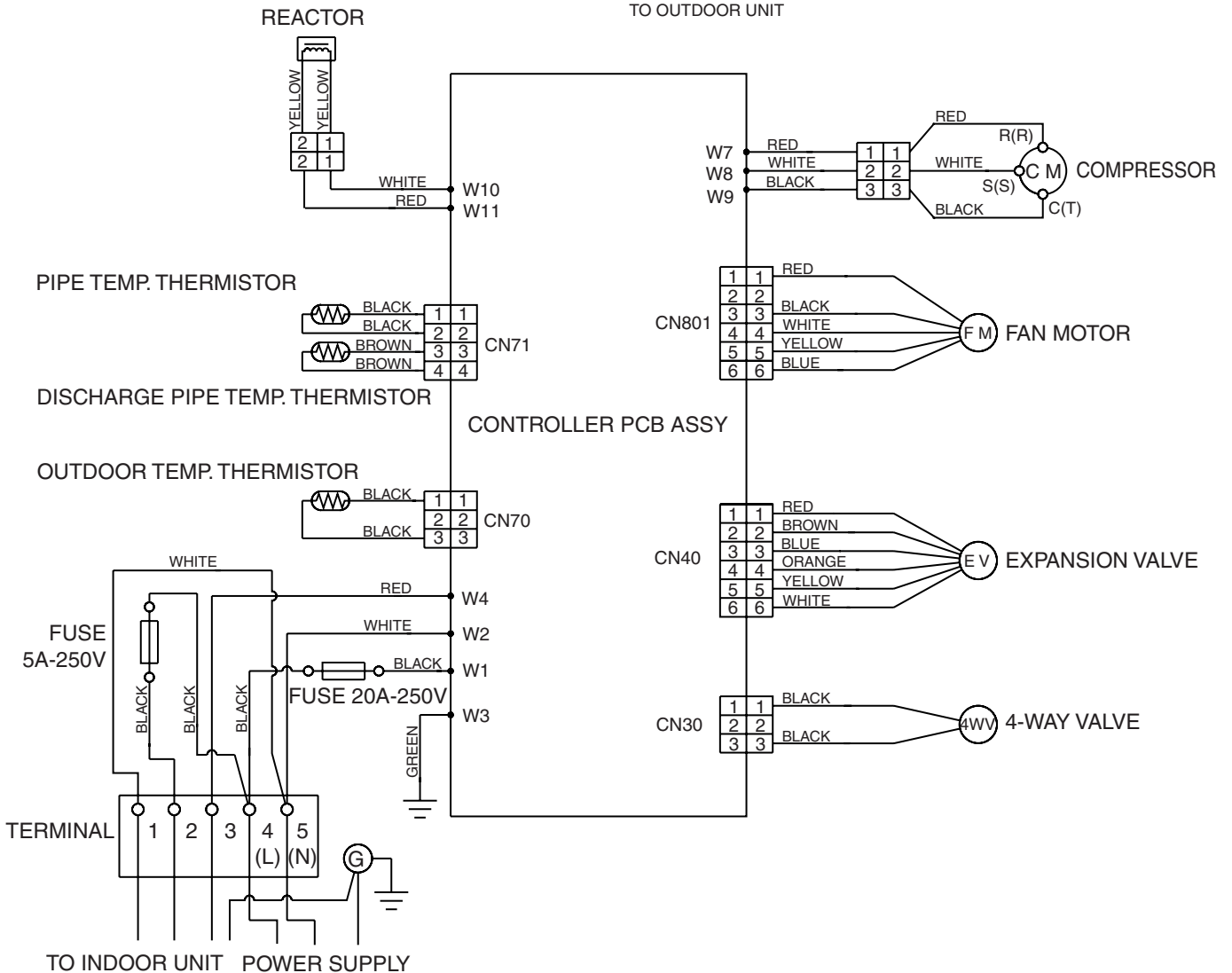
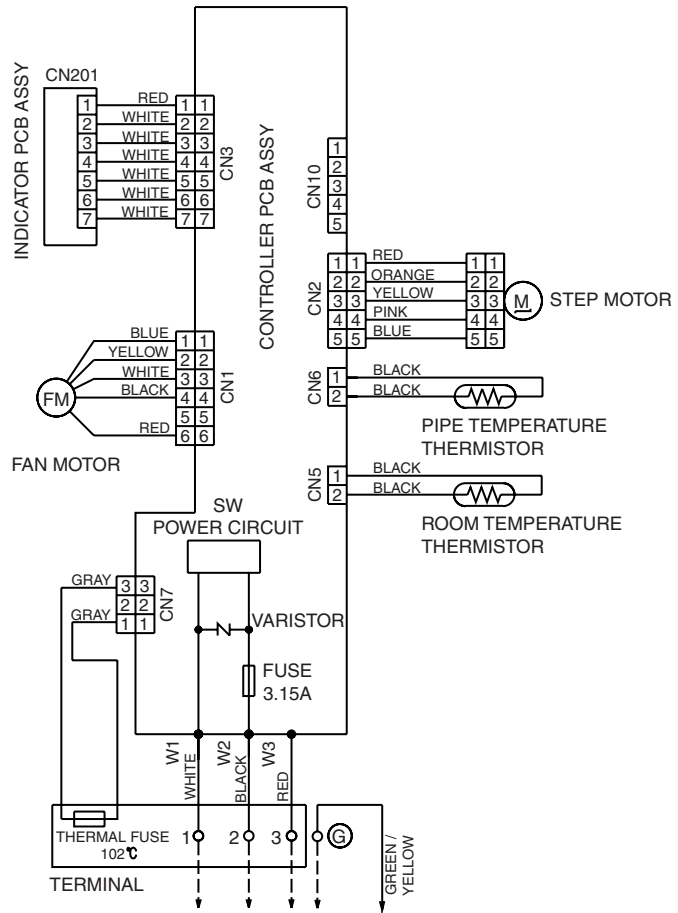
Refrigerant pipe diameter
 Liquid : 1/4" (6.35 mm)
 Gas : 1/2" (12.7 mm)

CIRCUIT DIAGRAM

Model :
MW18C3F / MR18C3F

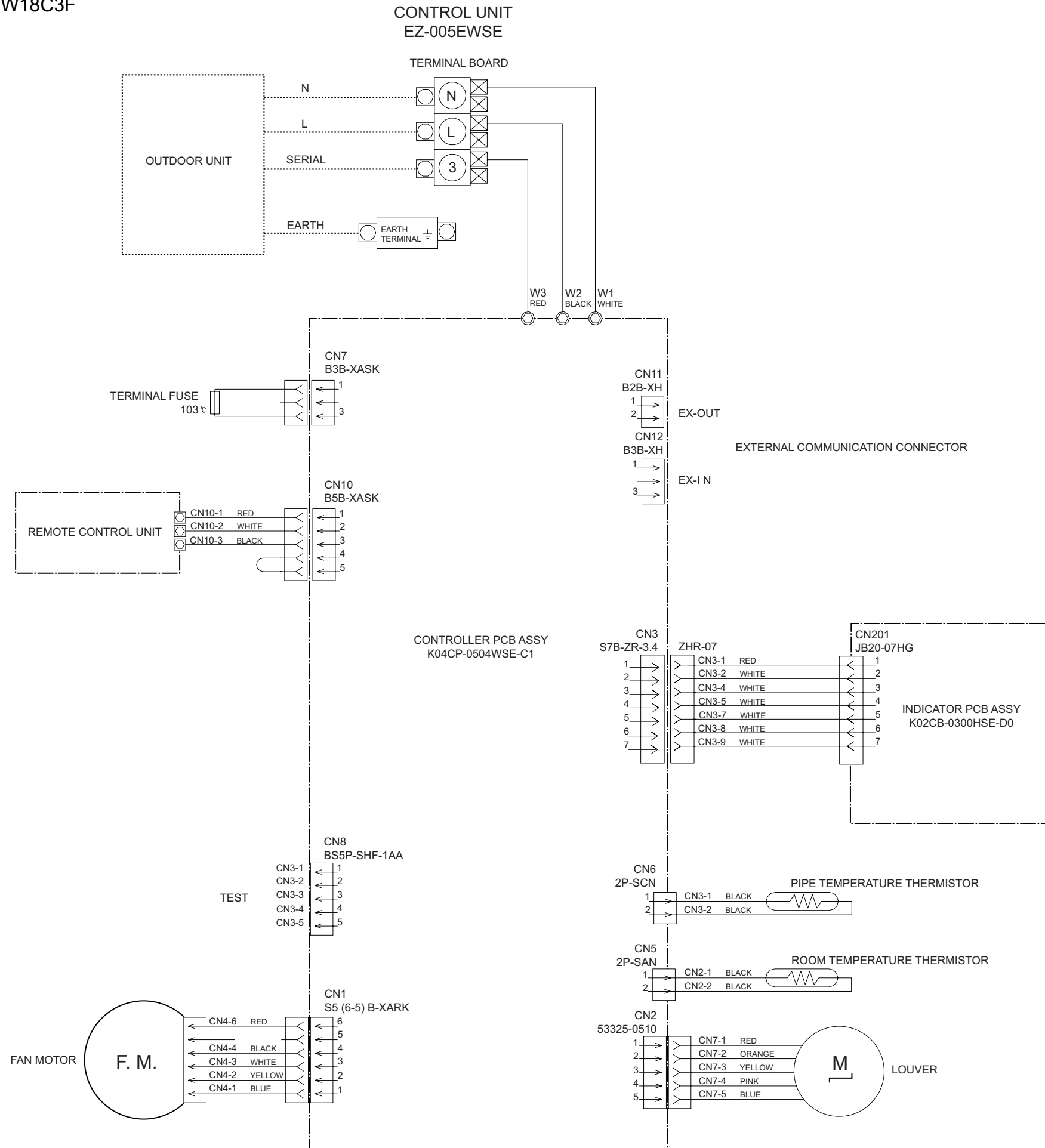
INDOOR UNIT

OUTDOOR UNIT

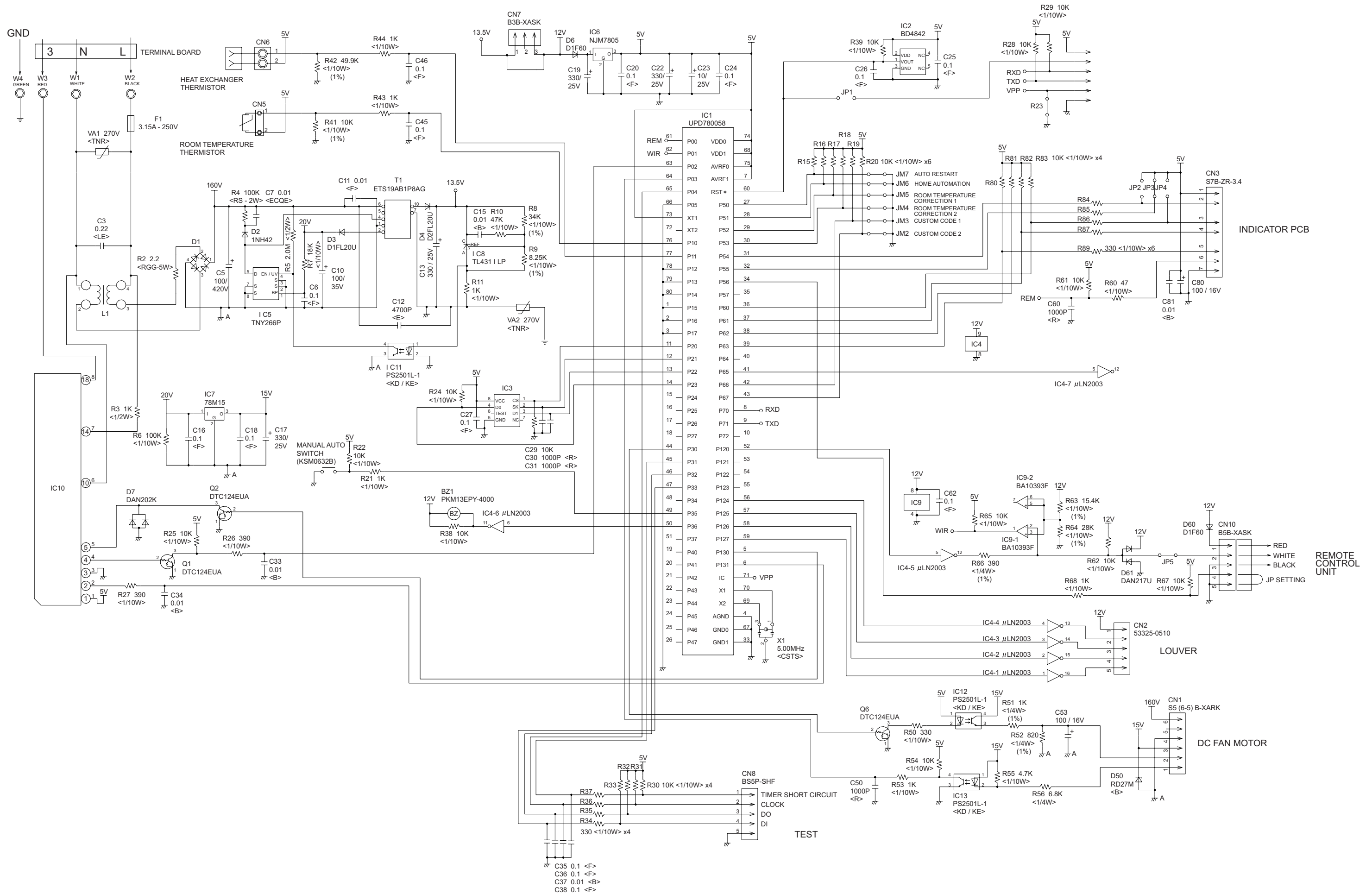


INDOOR PCB CIRCUIT DIAGRAM

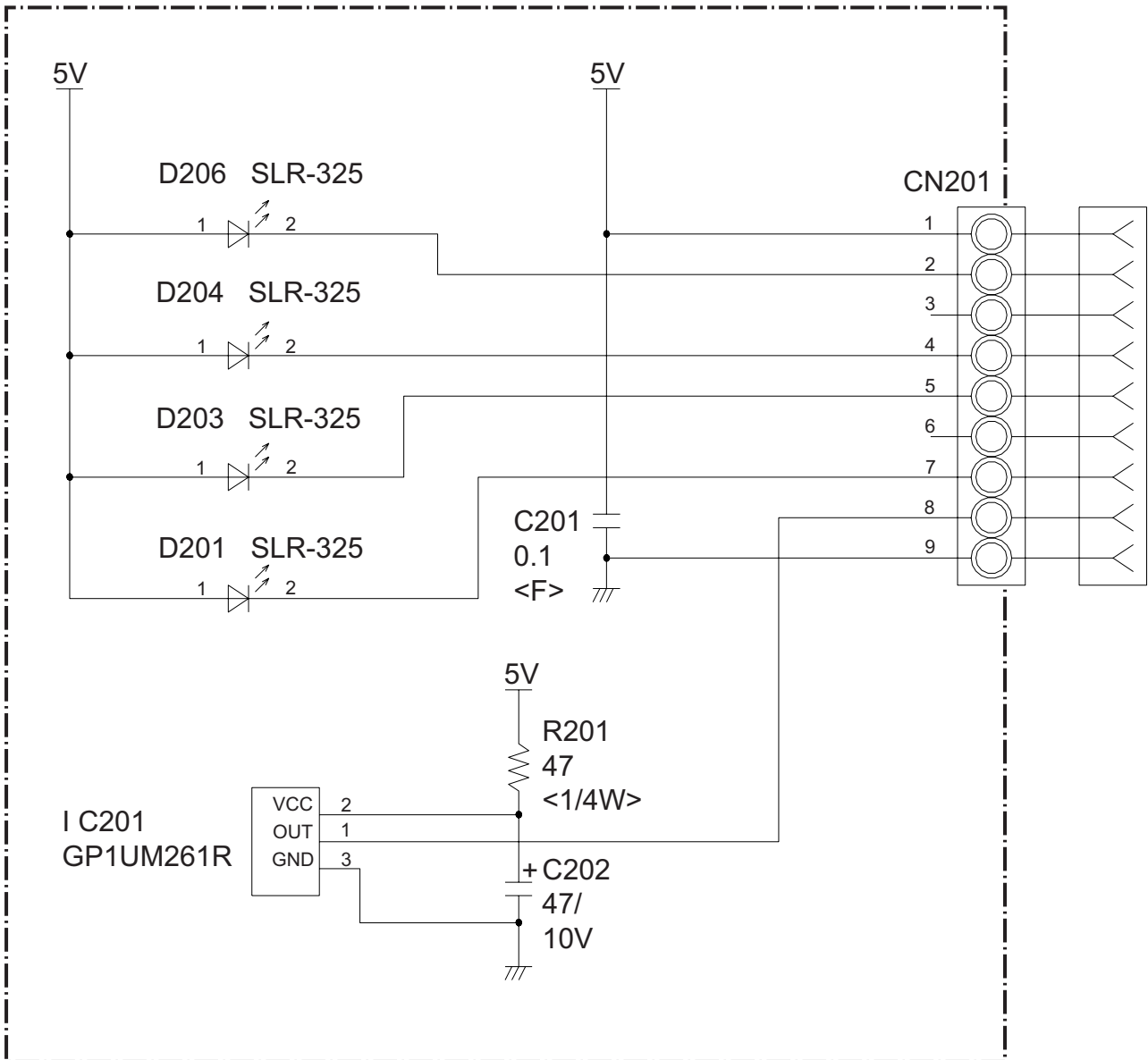
Model : MW18C3F



CONTROLLER PCB ASSEMBLY
K04CP-0504WSE-C1



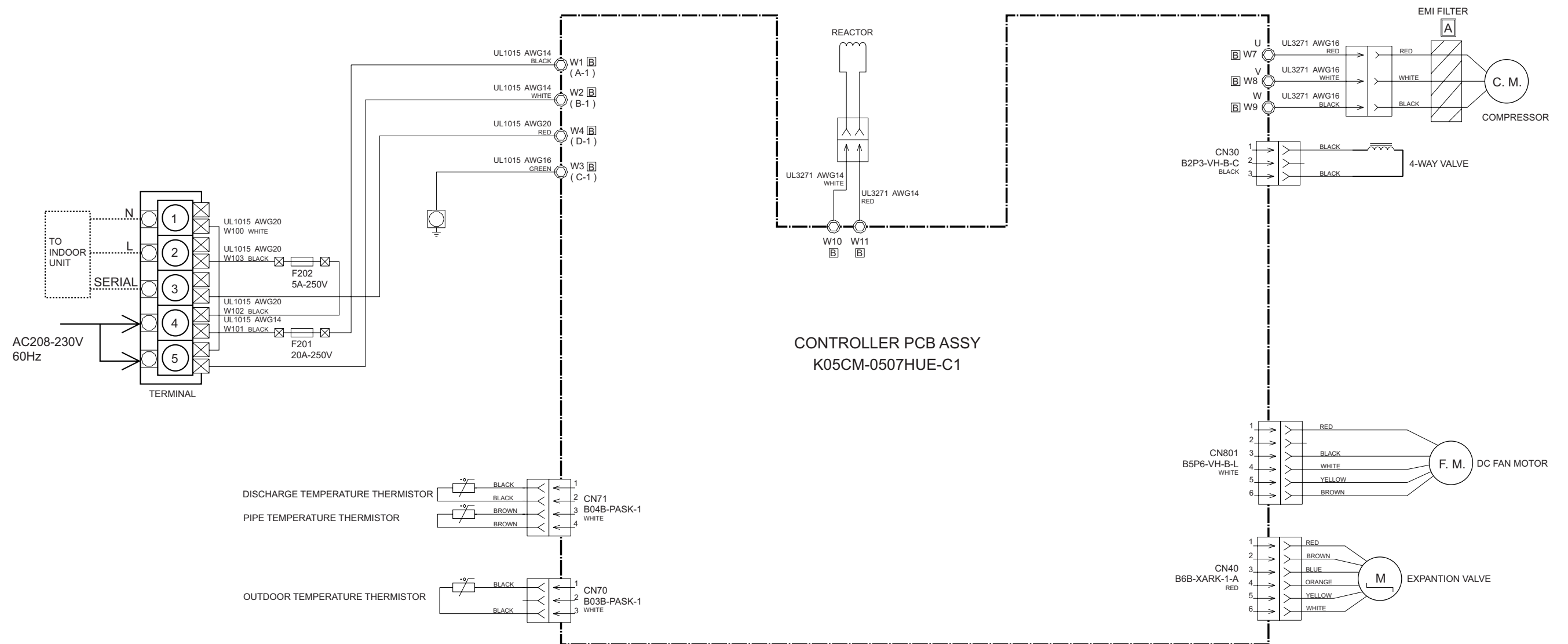
Model : MW18C3F



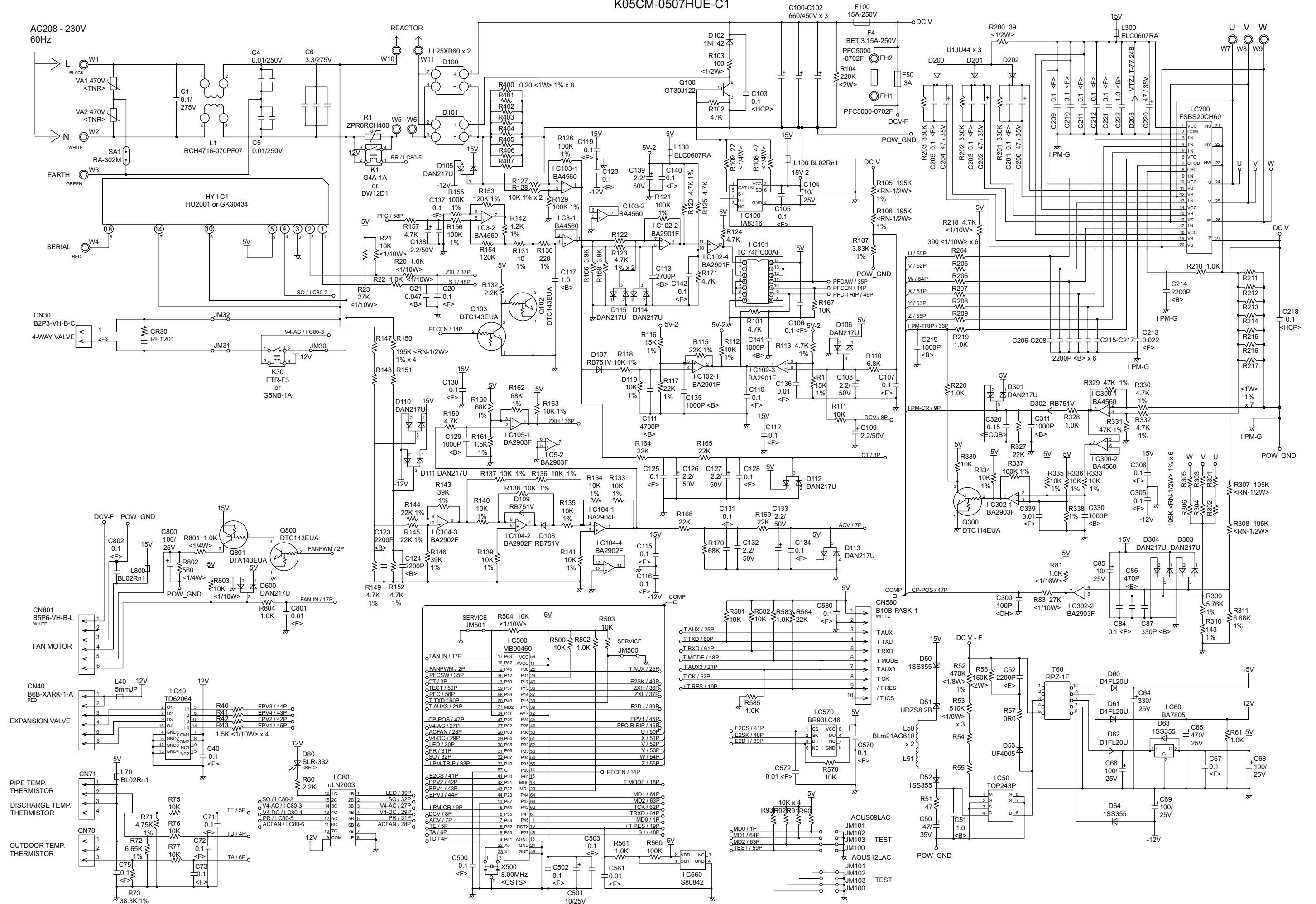
OUTDOOR PCB CIRCUIT DIAGRAM

Model : MR18C3F

INVERTER ASSEMBLY EZ-005SHUE



CONTROLLER PCB ASSY
K05CM-0507HUE-C1



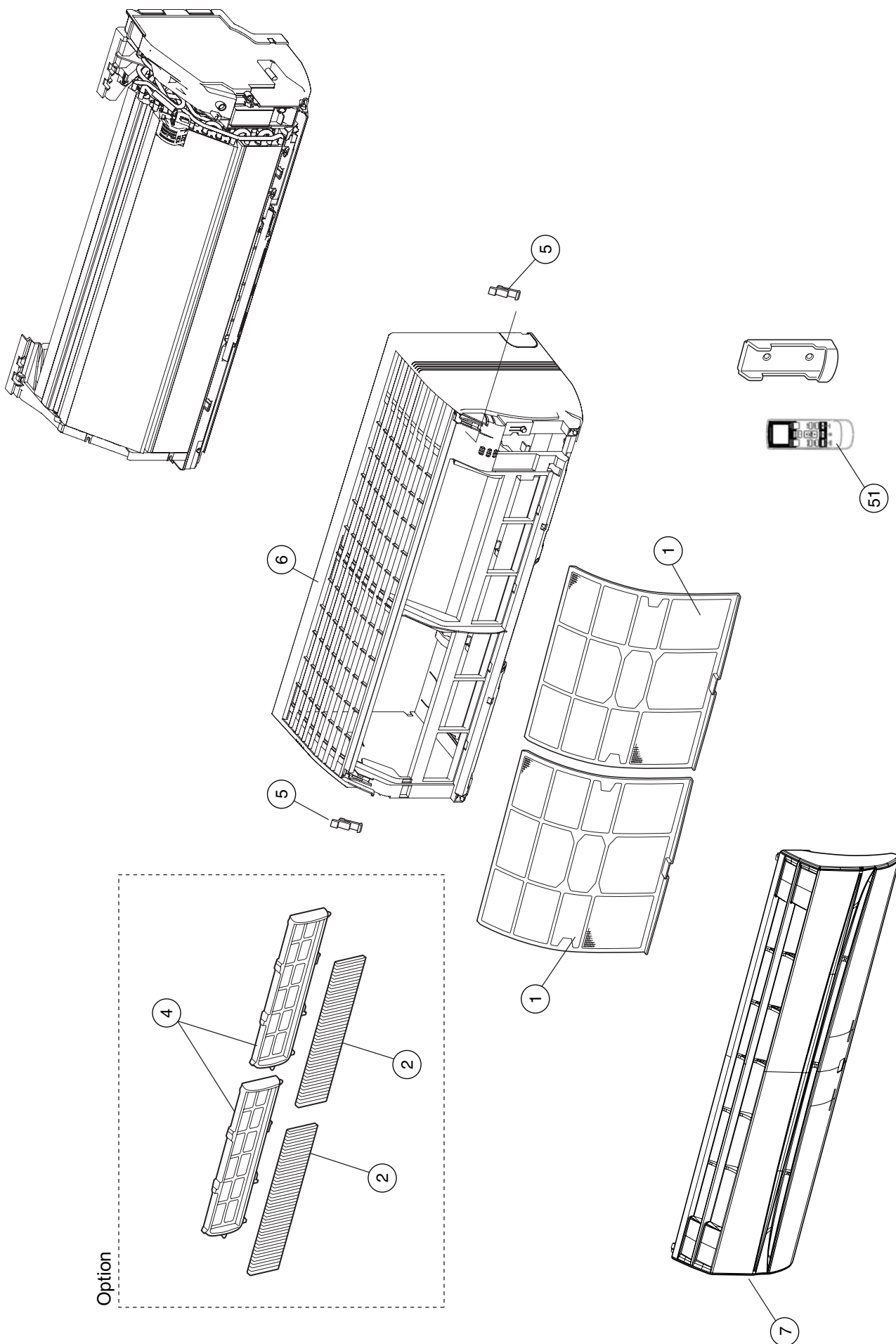
ERROR CONTENTS

Model : MW18C3F

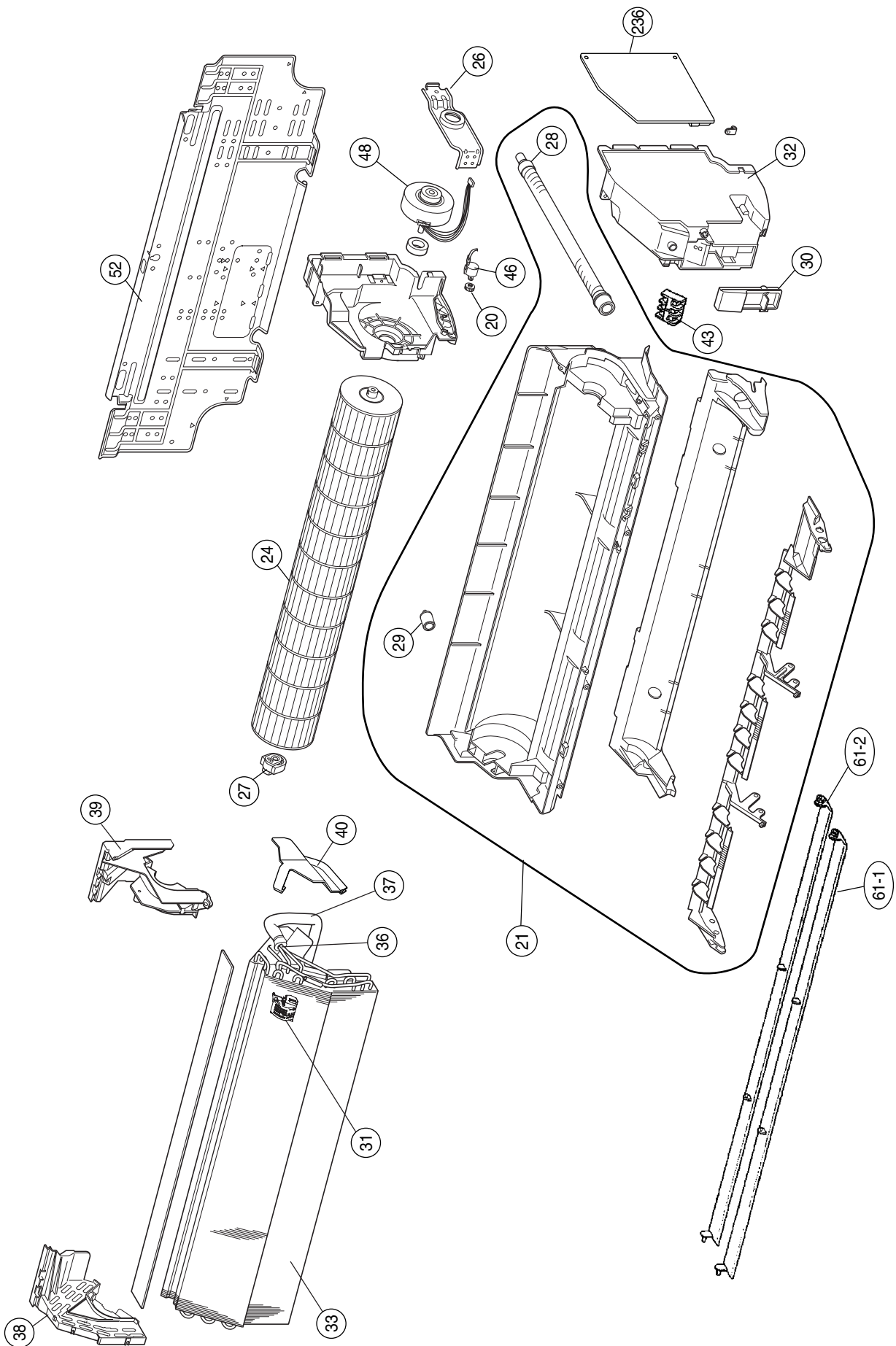
Error	Display		Error
	Operation LED	Timer LED	
Serial signal error	Normal	2 flash	Serial signal (reverse) error, at operation start up
		3 flash	Serial signal (reverse) error, during operation
		4 flash	Serial signal (forward) error, at operation start up
		5 flash	Serial signal (forward) error, during operation
Indoor unit thermistor error	2 flash	2 flash	Indoor temperature thermistor open / short
		3 flash	Heat exchanger middle thermistor open / short
Outdoor unit thermistor error	3 flash	2 flash	Discharge thermistor open / short
		3 flash	Heat exchanger thermistor open
		4 flash	Outdoor temperature thermistor open / short
Indoor unit control error	4 flash	2 flash	Forced automatic SW welded
		3 flash	Main relay welded
		4 flash	Power interruption error
		7 flash	VDD permanent stop protection
		8 flash	reverse VDD permanent stop protection
Outdoor unit control error	5 flash	2 flash	Current trip error
		3 flash	CT abnormal
		5 flash	Compressor location detection error
		6 flash	Outdoor unit fan drive system abnormal
Indoor fan motor error	6 flash	2 flash	Abnormal lock
		3 flash	Abnormal rotation
Refrigerant cycle error	7 flash	2 flash	Discharge Temperature abnormal
		3 flash	Cooling high pressure abnormal rise
Optional function error	8 flash	4 flash	PFC circuit error
Model information error	0.1 sec on/off	0.1 sec on/off	Model information error

DISASSEMBLY ILLUSTRATION

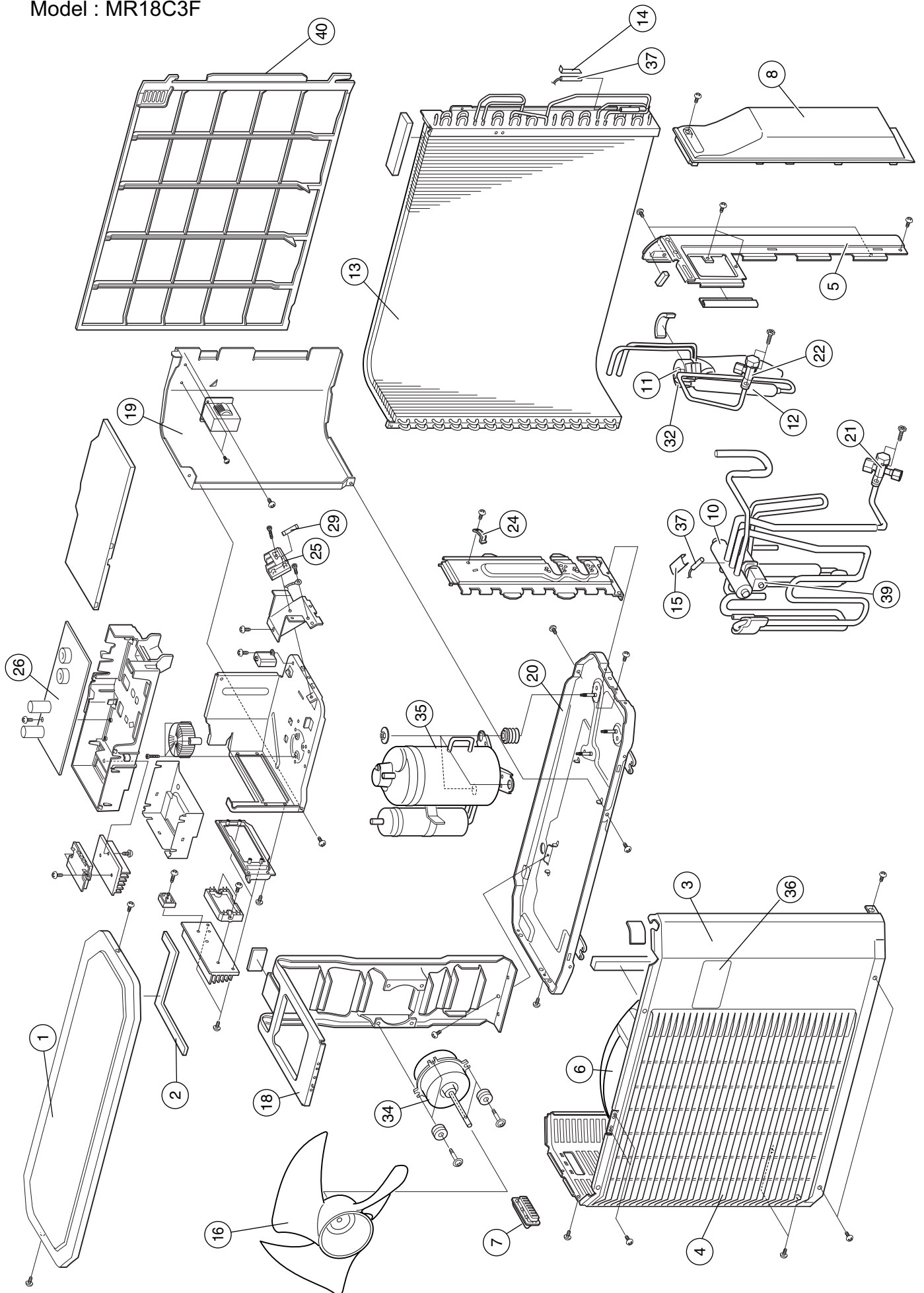
Model : MW18C3F



Model : MW18C3F



Model : MR18C3F



PARTS LIST

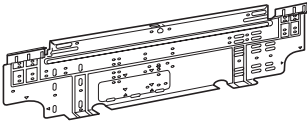



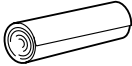
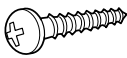

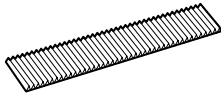
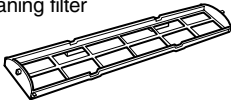

INDOOR UNIT

Ref. No	Description	Part No.	Ord. Q'ty
		MW18C3F	
1	Air Filter	67201200	
4	Holder (Filter)	67201256	
5	Clamper (Grille)	67201257	
6	Front Panel	67200936	
7	Intake Grille Assy	67201230	
20	Gear-A	67201202	
21	Casing Assy	67201206	
24	Crossflow Fan Assy	67201233	
26	Clamp (Motor)	67201258	
27	Shaft Holder-C Assy	67200922	
28	Drain Hose Assy	67201259	
29	Drain Cap Assy	67201211	
30	Wire Clamper	67201260	
32	Cover (Switch)	67201237	
33	Evaporator Total Assy	67201214	
36	Joint Pipe Assy	67201238	
37	Insulation (Pipe)-E	67201217	
38	Holder (Evaporator)-L Assy	67201239	
39	Holder (Evaporator)-R	67201219	
40	Water Seal	67201220	
42	Air Seal	67201215	
43	Terminal	67201222	
46	Step Motor	67201225	
48	Fan Motor Assy	67201240	
51	Remote Control Unit	67201548	
52	Bracket Panel	67201242	
61-1	Flow Control Panel-U	67201203	
61-2	Flow Control Panel-Z	67201204	
236	Controller PCB Assy	67201261	
		(K04CP-0504WSE-C1)	
---	Pipe Temperature Thermistor	67201245	
---	Room Temperature Thermistor	67201246	
---	Indicator PCB Assy	67201247	
---	Evaporator B Assy	67201255	

OUTDOOR UNIT

Ref. No	Description	Part No.	Ord. Q'ty
		MR18C3F	
1	Top Panel Assy	67201400	
2	Top Panel Seal	67201401	
3	Cabinet Sub Assy	67201402	
4	Blow Down Grille	67201403	
5	Cabinet Right Assy	67201472	
6	Fan Ring	67201405	
7	Grip	67201406	
8	Switch Cover Assy	67201407	
10	4-Way Valve	67201408	
11	Expansion Valve Assy	67201409	
12	Strainer	67201410	
13	Condenser Assy	67201411	
14	Thermistor Spring-A	67206400	
15	Thermistor Spring-A	67201412	
16	Propeller Fan	67201413	
18	Motor Bracket	67201414	
19	Separator	67201415	
20	Base Assy	67201416	
21	3-Way Valve Assy	67201417	
22	2-Way Valve Assy	67201418	
24	Cord Clamp	67201419	
25	Terminal	67201332	
26	Inverter PCB Assy	67201420	
29	Fuse	67201421	
32	Expansion Valve Coil	67201422	
34	Fan Motor	67201423	
35	Compressor Assy	67201424	
36	Emblem Rear	67201473	
37	Heat Exchanger Thermistor		
39	Solenoid Coil	67201427	
---	IPM	67201428	
---	Outdoor Temp. Thermistor	67201429	
---	Thermistor	67201430	
---	Thermistor Assy	67201431	

STANDARD ACCESSORIES

Name and Shape	Part No.
	MW18C3F
Wall hook bracket 	9310001004
Remote control unit 	9315027061
Remote control unit holder 	9305642045
Battery (penlight) 	0600185534
Cloth tape 	9310519004
Tapping screw (big) (φ 4 x 25) 	0700076046
Tapping screw (small) (φ 3 x 12) 	0700019036
Air cleaning filter 	9312153015
	9311925033
Air cleaning filter frame 	9306602017
Seal A 	9304536000

0511G2949