

Broil King®

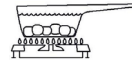
REDDI-BILT BARBECUES

ASSEMBLY MANUAL & PARTS LIST

MANUEL DE MONTAGE & LISTE DE PIECES



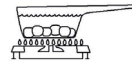
Broil King
REGAL XL 20
962-24
962-27



Broil King
REGAL XL 40
962-44
962-47



Broil King
REGAL XL 70
962-74
962-77



Broil King
950-44
950-47

RETAIN FOR FUTURE REFERENCE

VEUILLEZ CONSERVER POUR REFERENCE ULTERIEURE

1-800-265-2150

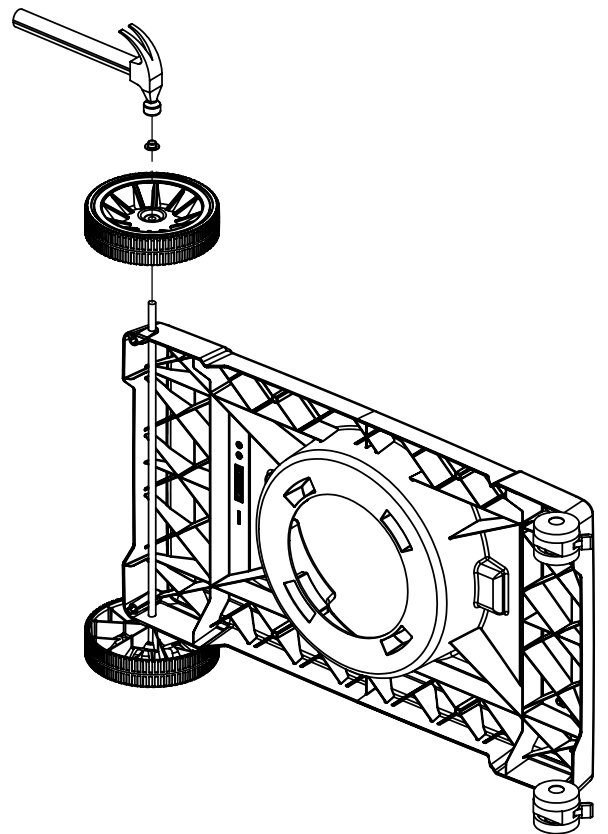
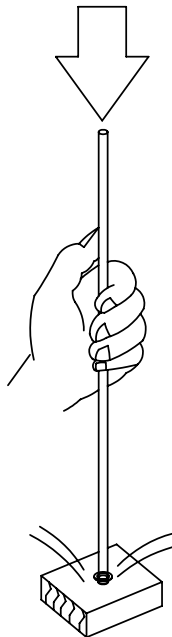
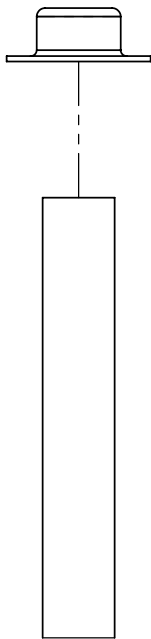
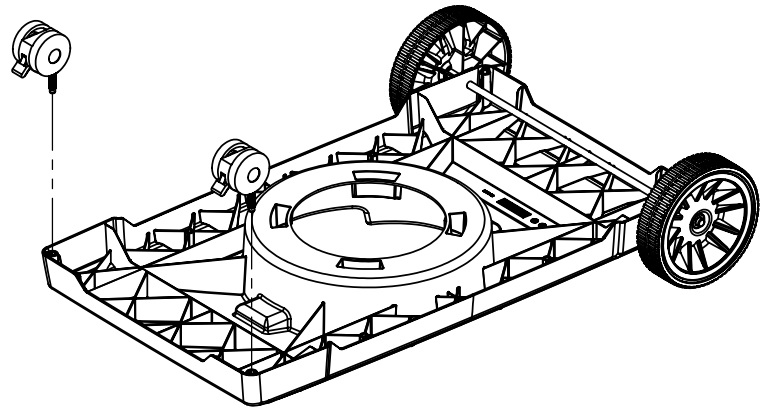
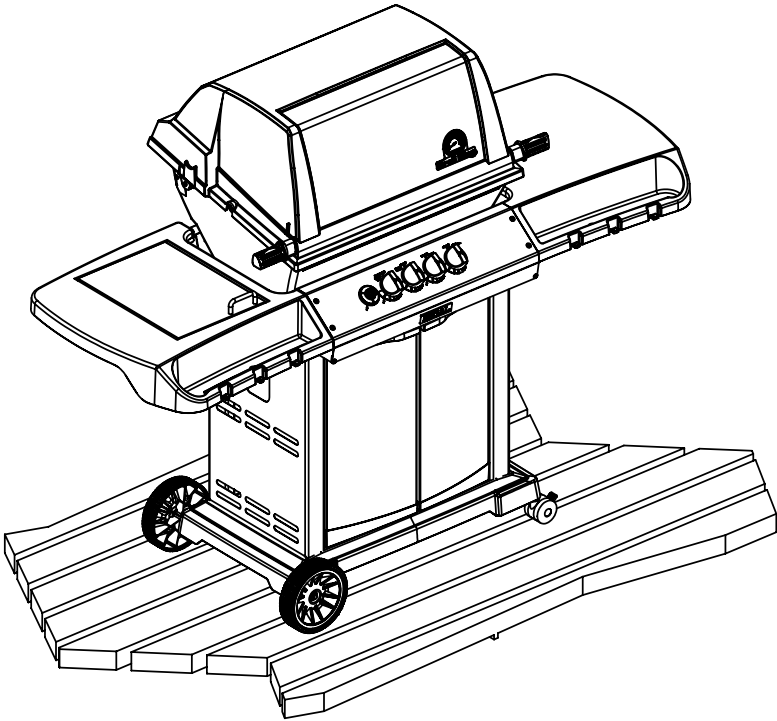
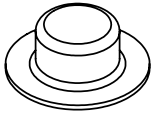
info@omcbbq.com

Onward
MANUFACTURING COMPANY
SINCE 1906
585 KUMPF DRIVE LIMITED
WATERLOO, ONTARIO, CANADA
N2Y 1K3

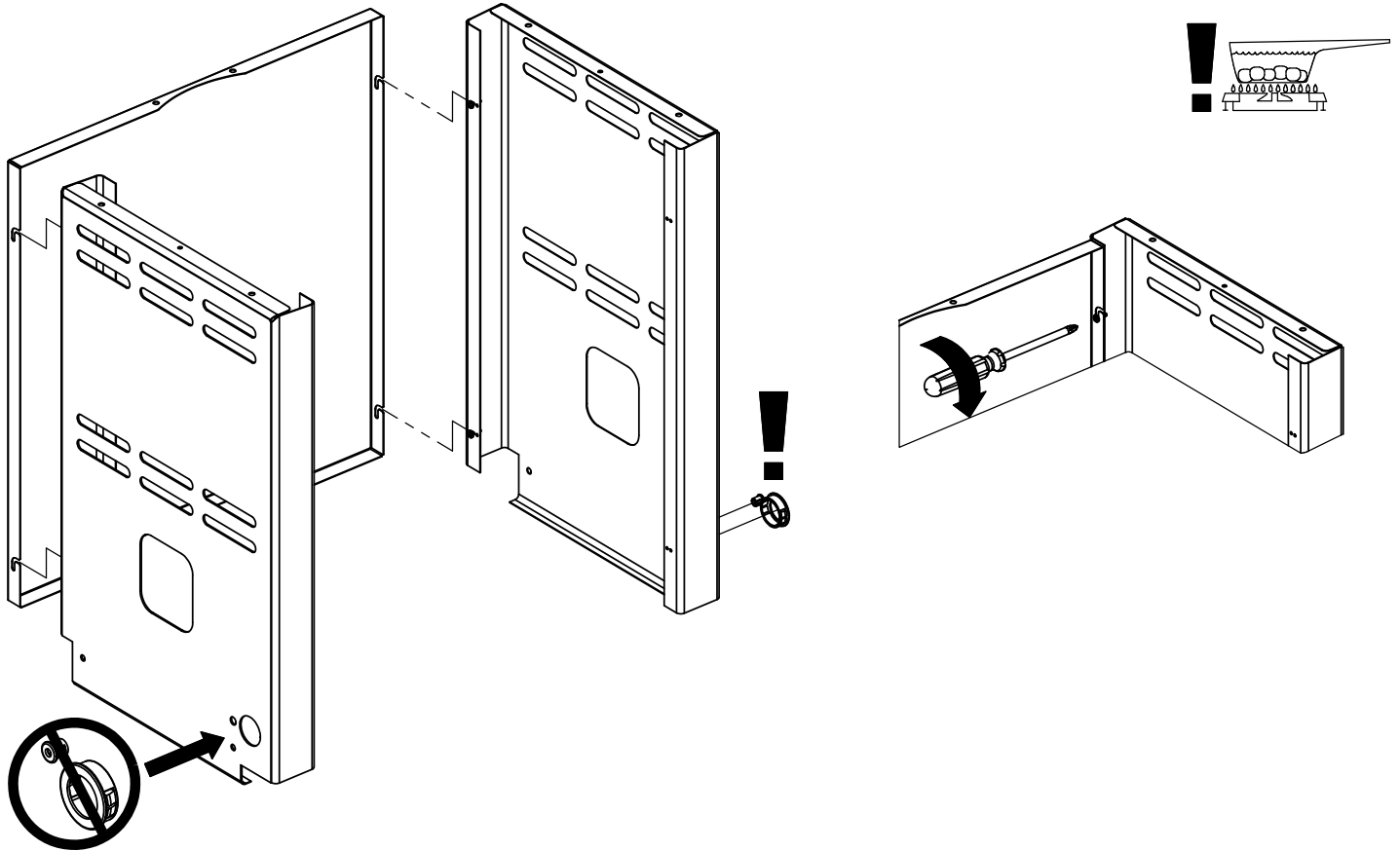
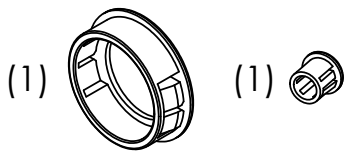
10084-K74 REV B 12/07

1

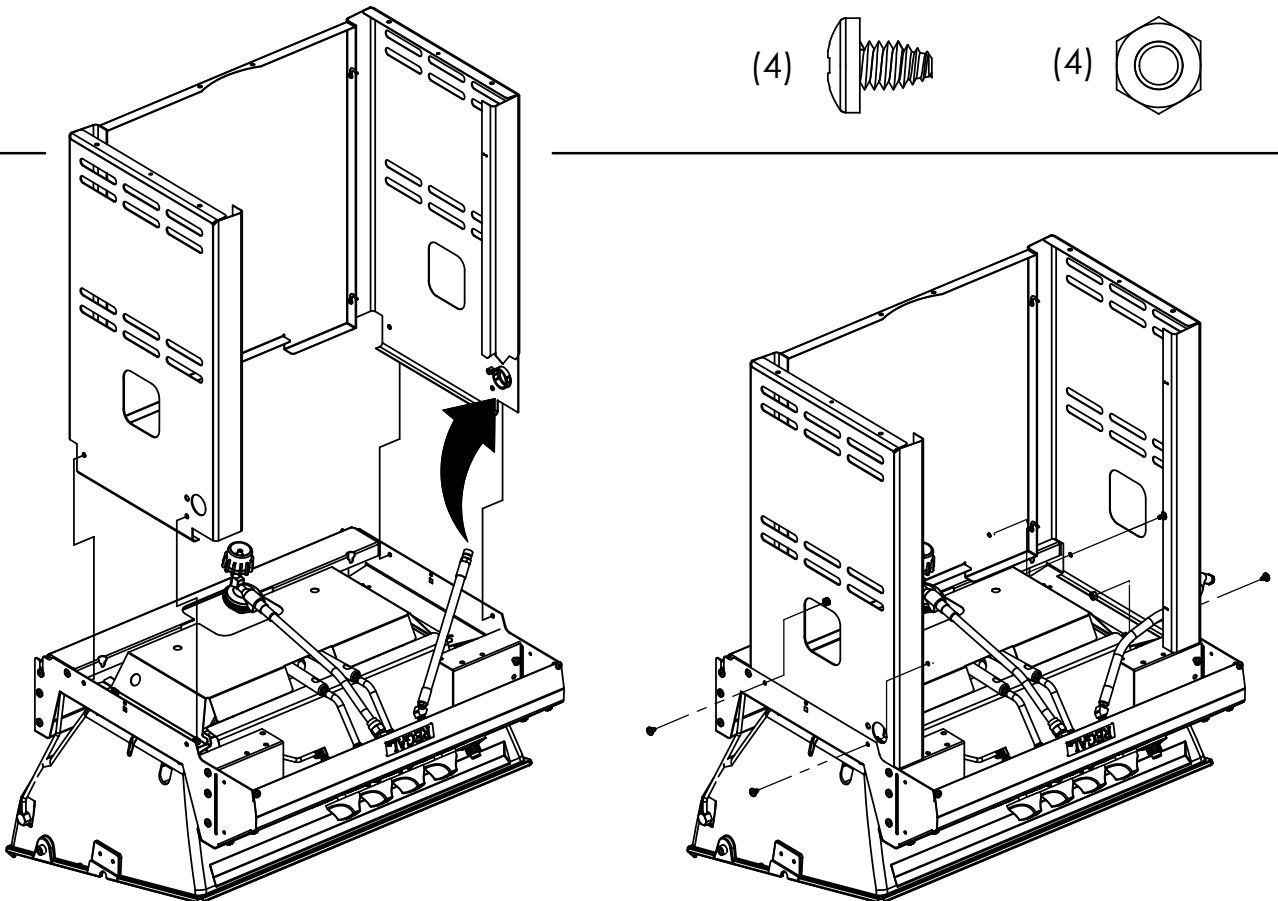
(2)



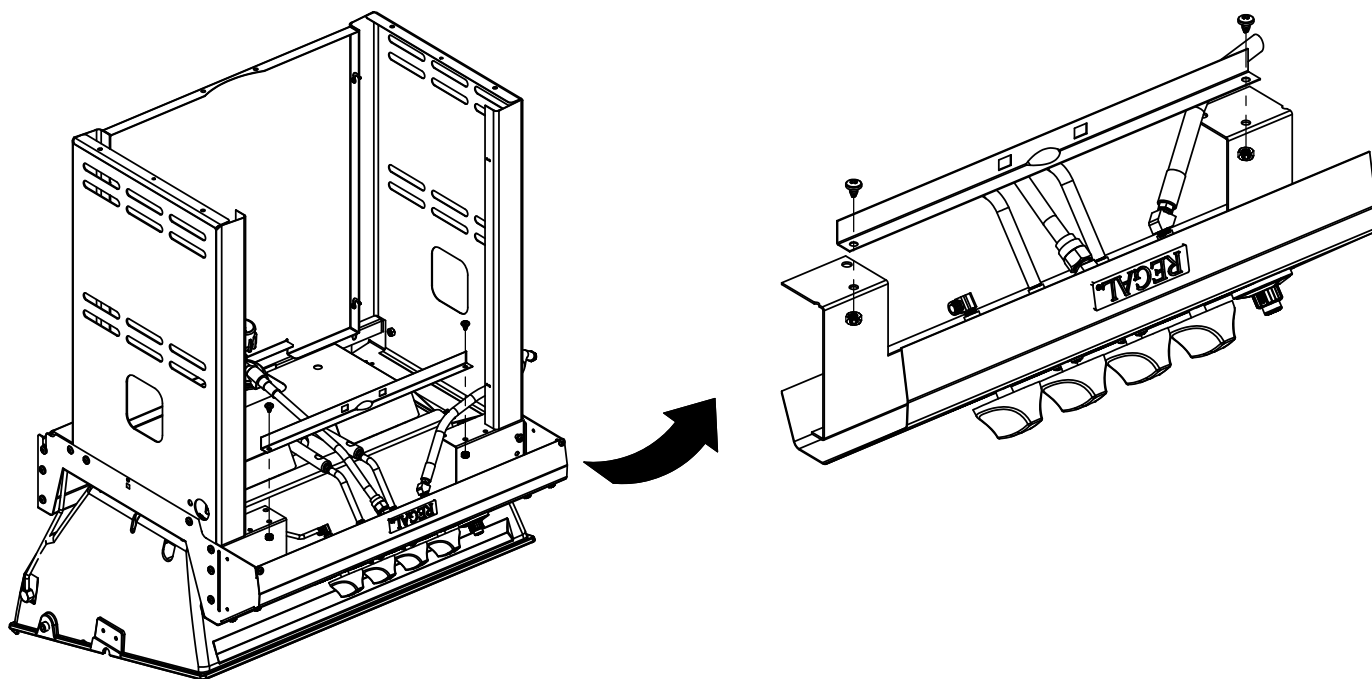
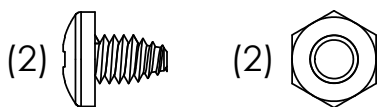
2



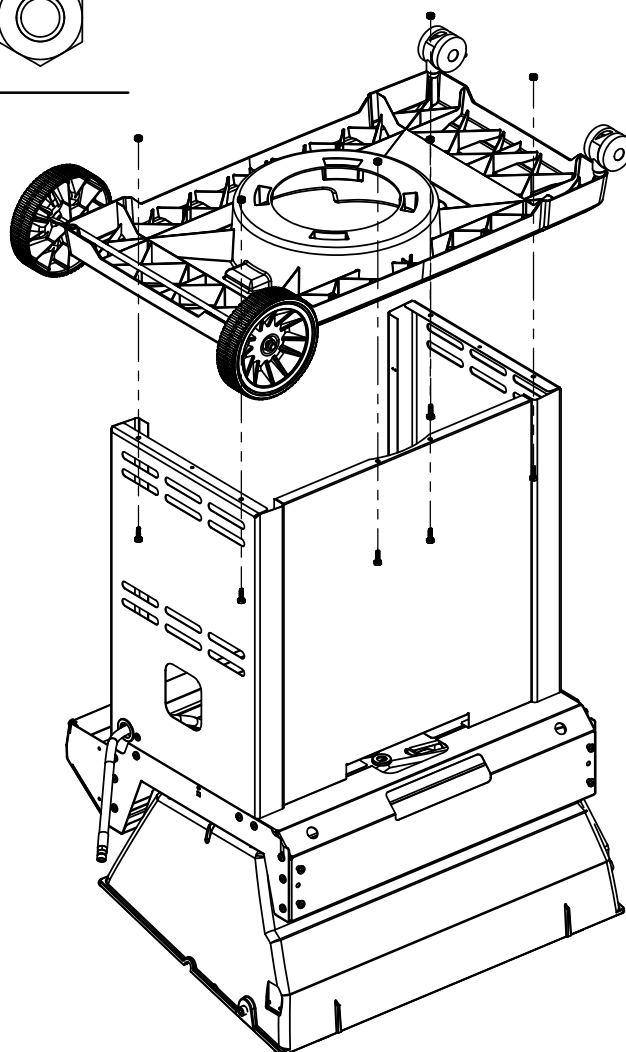
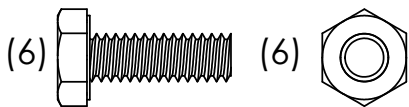
3



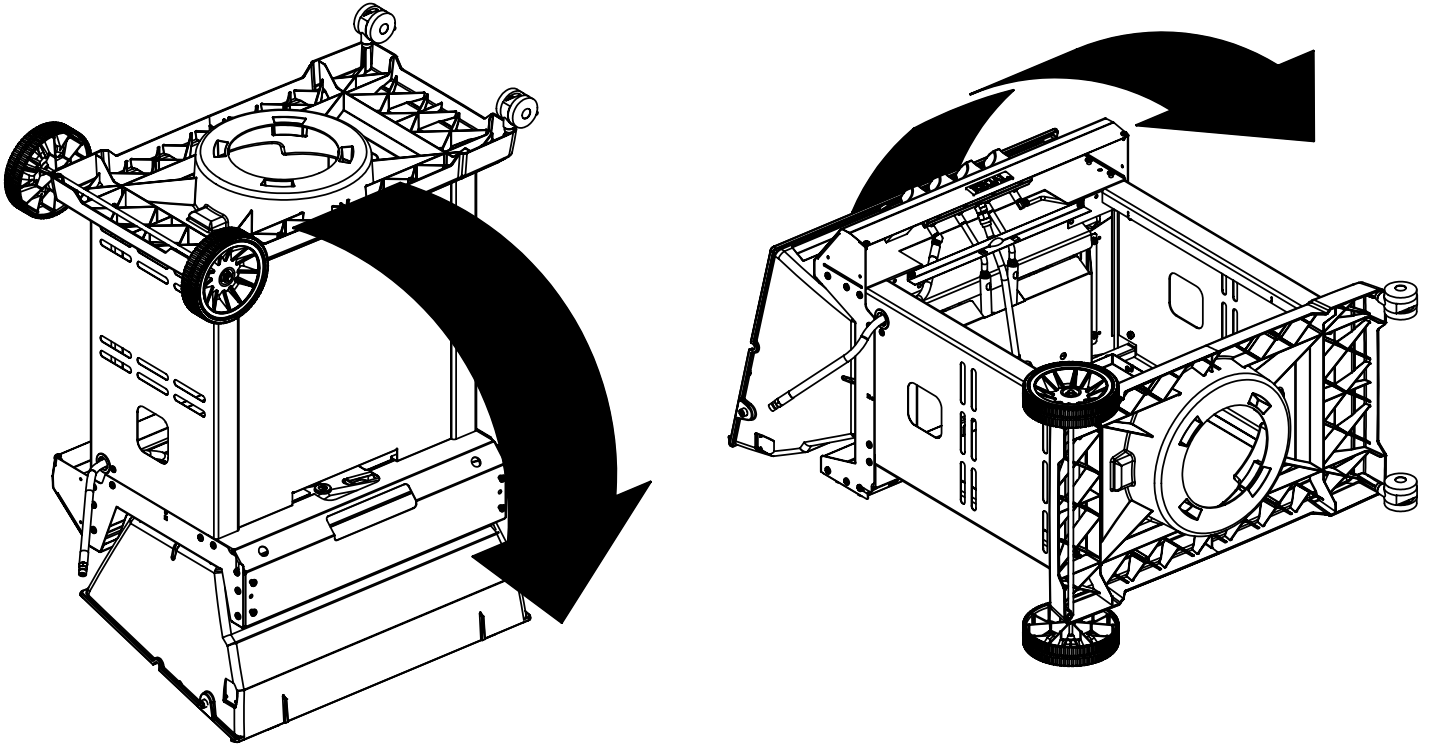
4



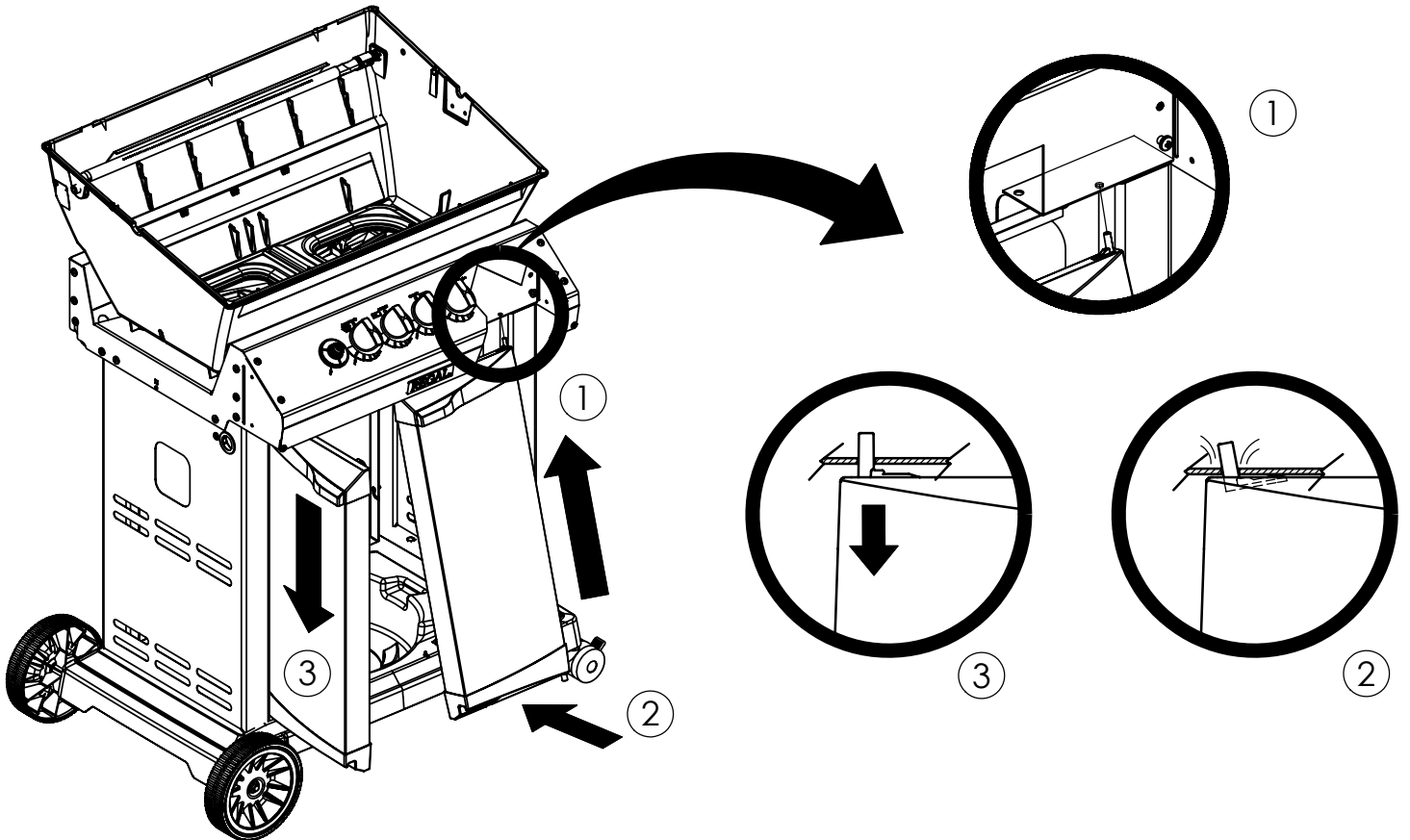
5



6

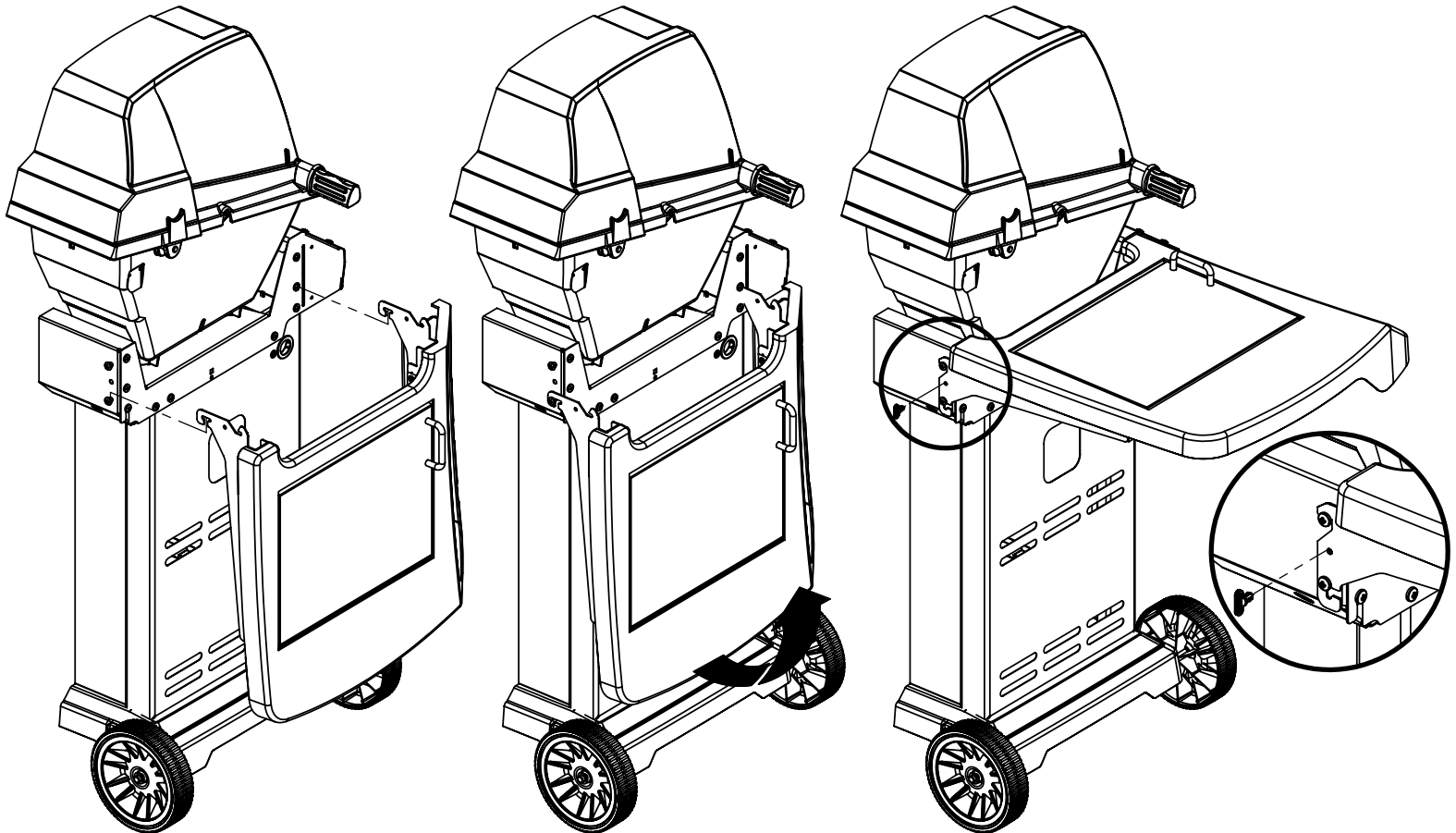
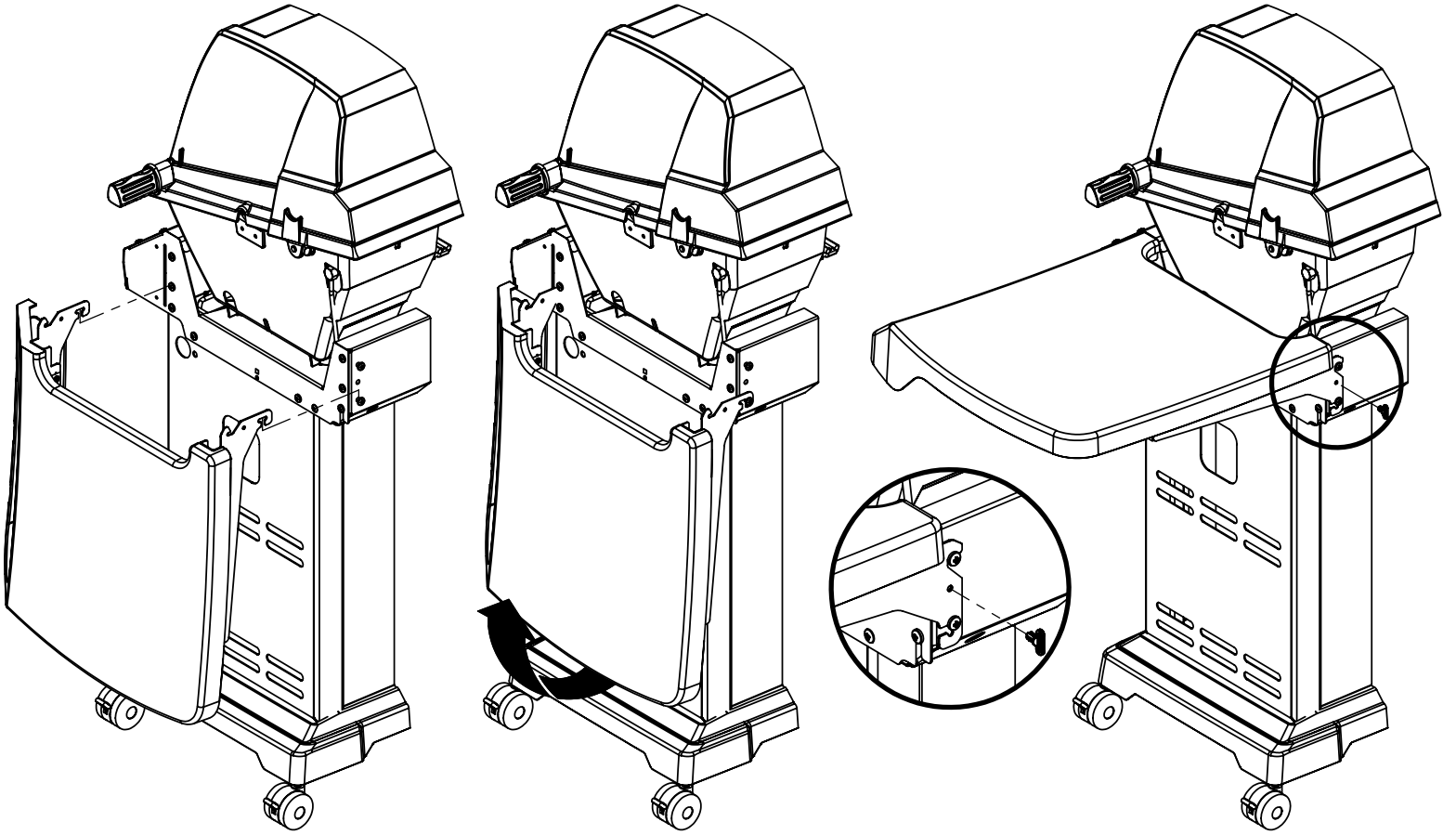
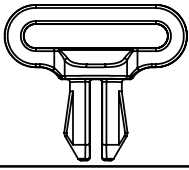


7

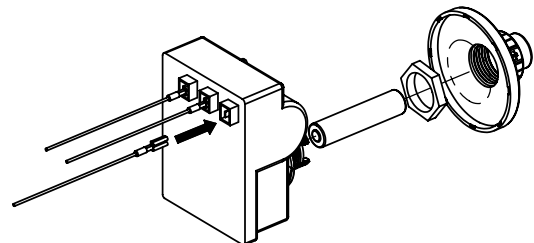
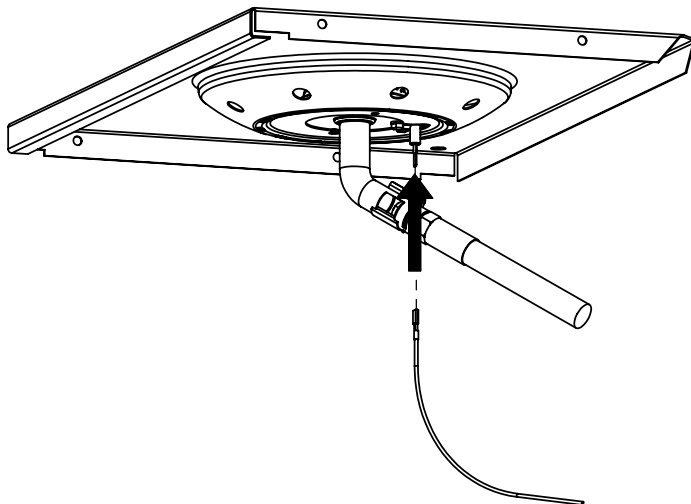
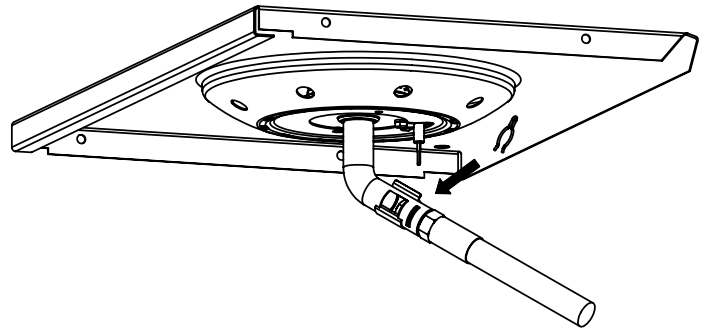
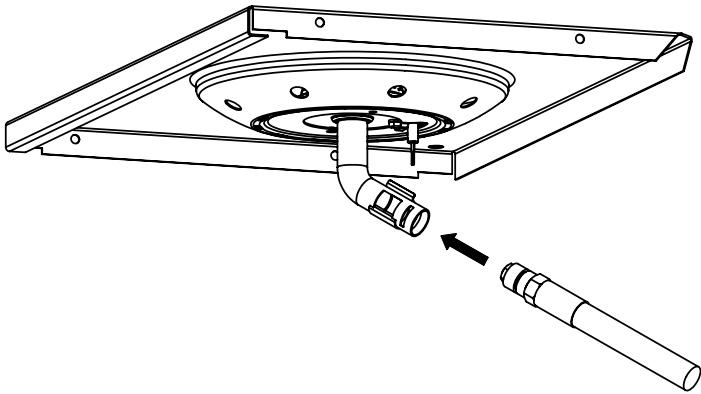
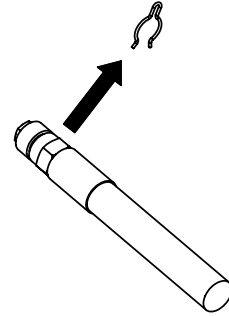
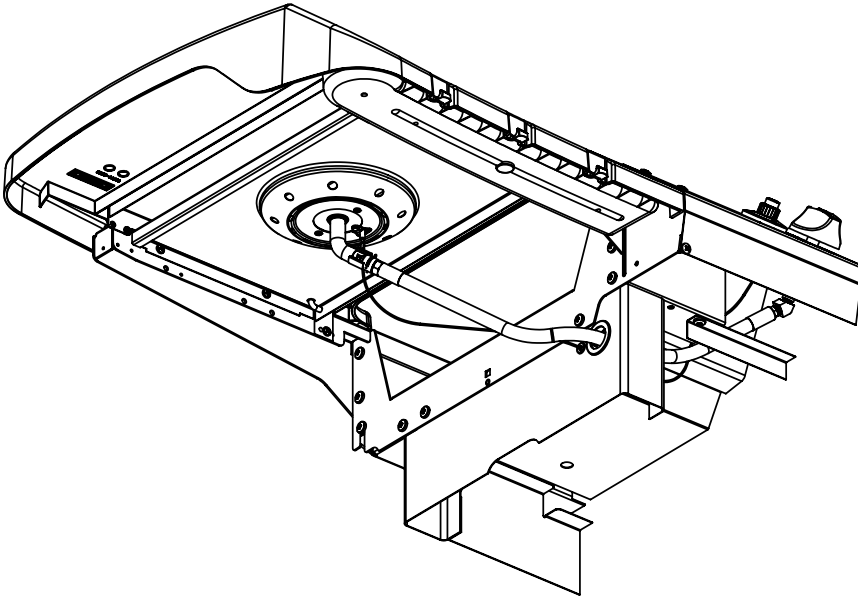
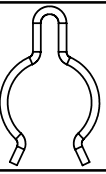


8

(2)



(1)



9

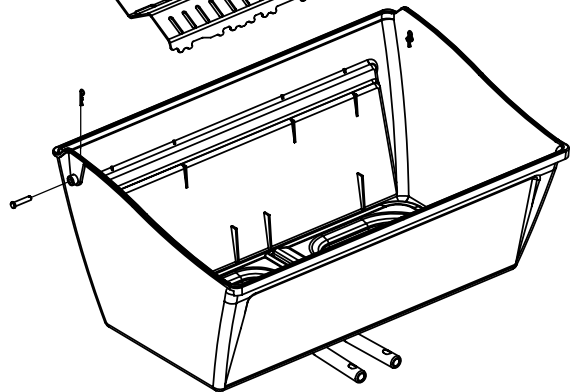
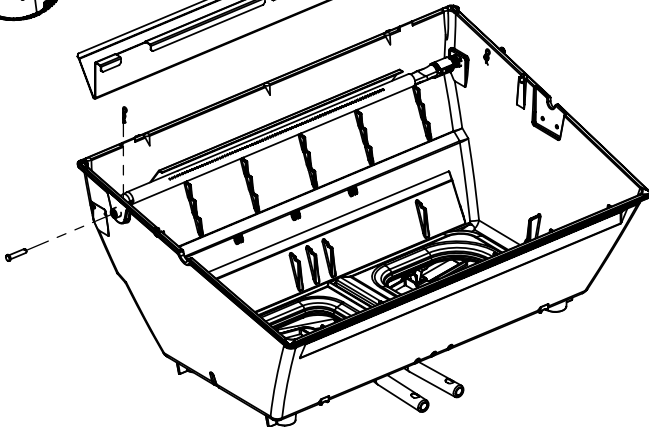
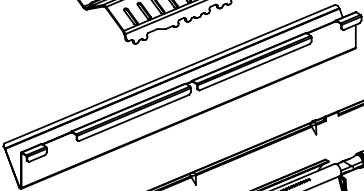
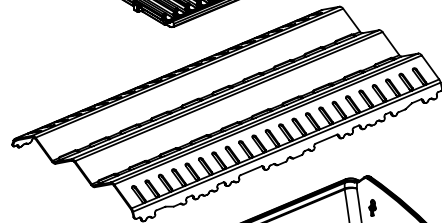
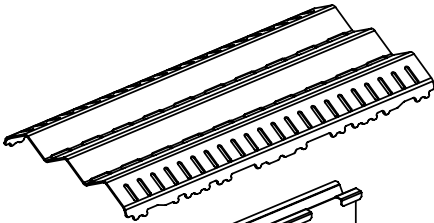
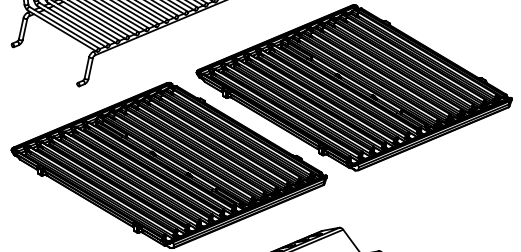
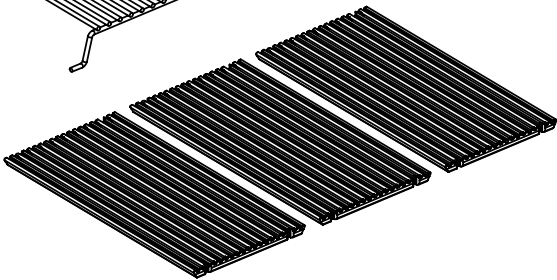
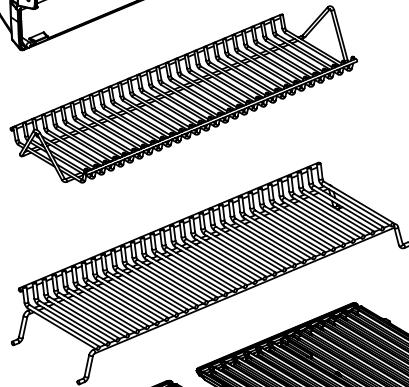
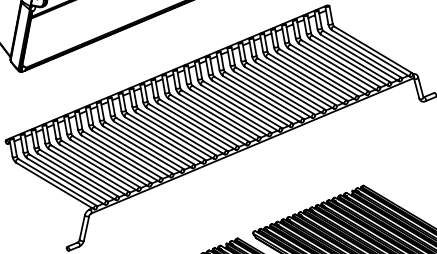
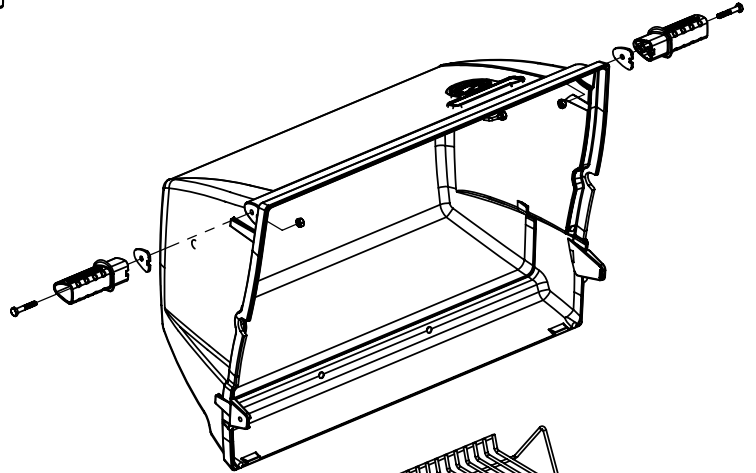
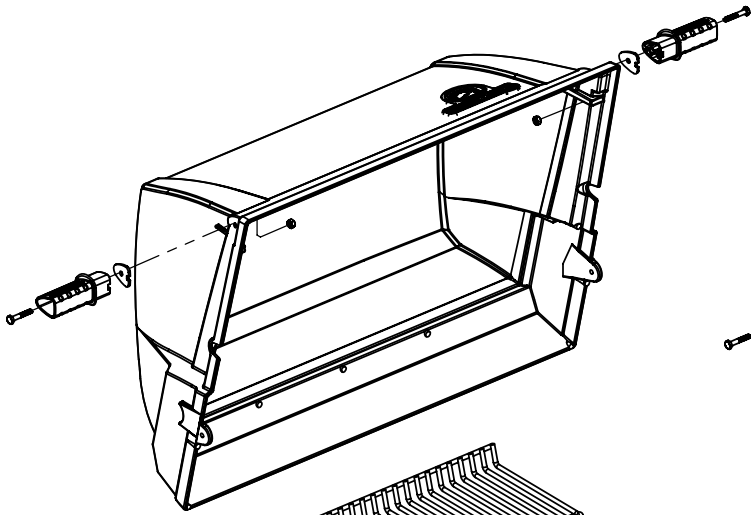
(2)

(2)

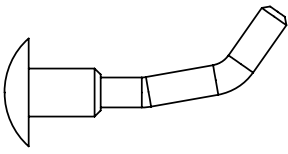
(2)

(2)

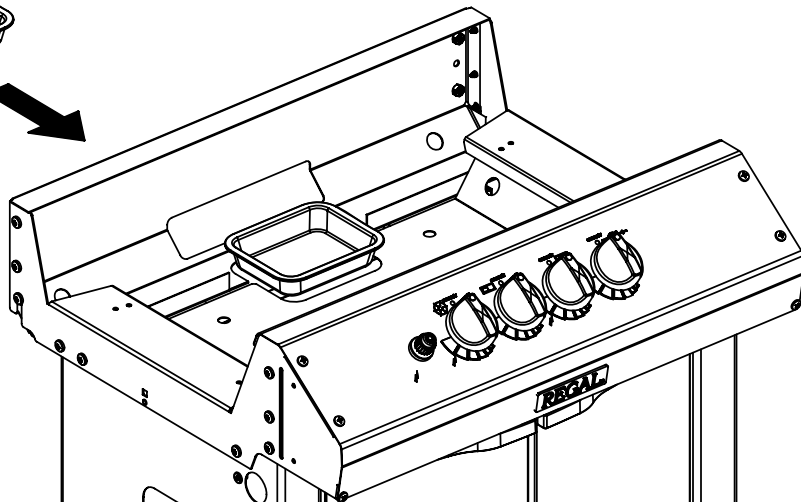
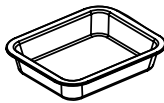
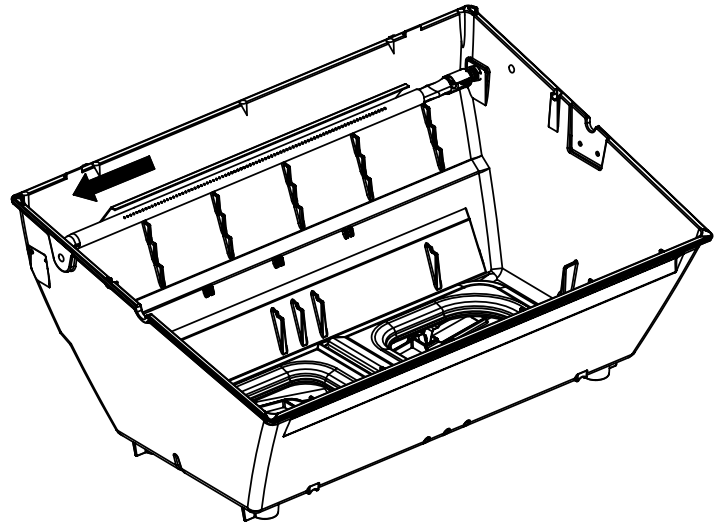
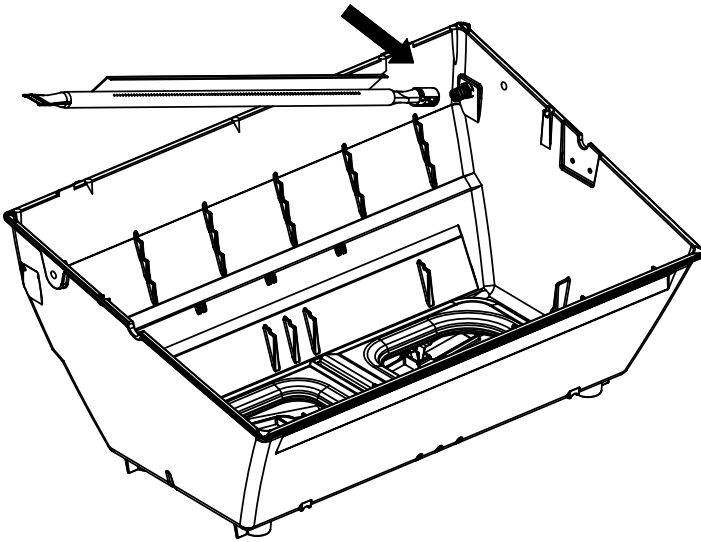
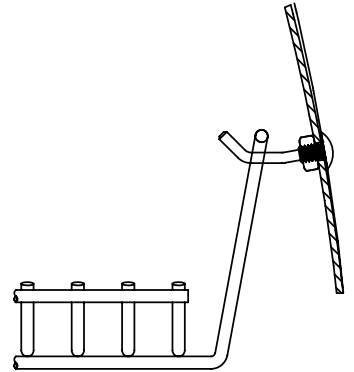
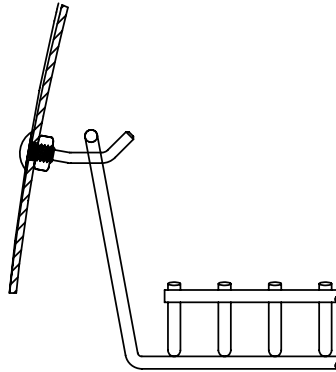
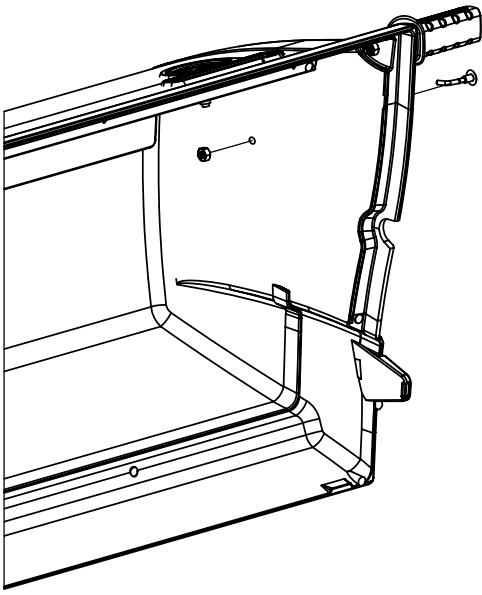
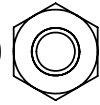
(2)



(2)



(2)



PARTS LIST / LISTE DES PIECES

KEY #	ITEM #	DESCRIPTION	DESCRIPTION	950-44	950-47	962-24	962-27	962-44	962-47	962-74	962-77
56	10892-7	WHEEL	ROUE	2	2	2	2	2	2	2	2
65	S13005	BURNER ROTISSERIE	BRÛLEUR DE TOURNEBROCHE	•	•	•	•	•	•	•	1
68	S21362	SPRING	RESSORT	•	•	•	•	•	•	•	1
70	Y-11990	HEX NUT	ÉCROU	•	•	•	•	•	•	•	1
71	10696-127	REARBURNER-ORIFICE LP	ORIFICE DU BRÛLEUR ARRIÈRE PL	•	•	•	•	•	•	•	1
	10696-185	REARBURNER-ORIFICE NG	ORIFICE DU BRÛLEUR ARRIÈRE GN	•	•	•	•	•	•	•	1
73	S21420	PUSH NUT	POUSSE ÉCROU	2	2	2	2	2	2	2	2
74	Y-6616	BOLT 1/4-20 X 1 1/2	BOULON – 1/4-20 X 1 1/2	2	2	2	2	2	2	2	2
75	10338-145	HANDLE	POIGNÉE	2	2	2	2	2	2	2	2
76	10239-7	WASHER-HANDLE	RONDELLE DE LA POIGNÉE	2	2	2	2	2	2	2	2
78	10892-15	CASTOR	ROULETTES	2	2	2	2	2	2	2	2
79	Y-12673	SHELF - LOCK PIN	ÉTAGÈRE - GOUPILLE DE SERRURE	2	2	2	2	2	2	2	2
80	Y-11546	SCREW- 1/4-20 X 3/8	VIS – 1/4-20 X 3/8	8	8	8	8	8	8	8	8
81	Y-11545	SCREW – 1/4-20 X 1 3/8	VIS – 1/4-20 X 1 3/8	4	4	4	4	4	4	4	4
82	Y-12855	SCREW 1/4-20 X 3/8	VIS – 1/4-20 X 3/8	14	14	14	14	14	14	14	14
82A.	Y-12855A	SCREW 1/4-20 X 3/8	VIS – 1/4-20 X 3/8	14	14	14	14	14	14	14	14
83	S21014	BOLT- 1/4-20 X 3/4	BOULON – 1/4-20 X 3/4	6	6	6	6	6	6	6	6
84	S15170	AXEL	ESSIEU	1	1	1	1	1	1	1	1
86	Y-11795	LOCK NUT – 1/4-20	ÉCROU DE SERRURE – 1/4-20	8	8	8	8	8	8	8	8
87	Y-11793	NUT - 1/4-20	ÉCROU – 1/4-20	20	20	18	18	18	18	18	18
97	Y-12642	SCREW – 8 X 1/2	VIS - 8 X 1/2	6	6	6	6	6	6	6	6
98	S21124	SCREW – 8 X 1/2	VIS - 8 X 1/2	10	10	10	10	10	10	10	10
98A	Y-12643	SCREW – 8 X 1/2	VIS - 8 X 1/2	12	12	12	12	12	12	12	12
99	Y-12646	SCREW – SHOULDER 8 X 1/2	VIS - 8 X 1/2	2	2	•	•	2	2	•	•
104	Y-12835	SCREW – 6-32 X 1/4	VIS – 6-32 X 1/4	2	2	•	•	2	2	•	•
105	Y-29307	NUT – 10-24	ECROU – 10-24	4	4	4	4	8	8	4	4
108	PB20-60	LID HANDLE	POIGNÉE	1	1	•	•	1	1	•	•
109	S21136	SCREW – 8-32 X 3/8	VIS – 8-32 X 3/8	4	4	2	2	4	4	2	2
110	10225-T10	GRID	GRILLE	1	1	•	•	1	1	•	•
111	10390-E10	SIDE BURNER	BRÛLEUR DE CÔTÉ	1	1	•	•	1	1	•	•
113	36200174	ELECTRODE – SIDE BURNER	ÉLECTRODE – BRÛLEUR DE CÔTÉ	1	1	•	•	1	1	•	•
114	10393-K40	COVER-SIDE BURNER	COUVERCLE LATÉRAL	1	1	•	•	1	1	•	•
115	Y-29304	SCREW – 10-24 X 3/8	VIS – 10/24 X 3/8	4	4	2	2	4	4	4	4
116	Y-29304	SCREW – 10-24 X 3/8	VIS – 10/24 X 3/8	4	4	4	4	8	8	4	4
117	10393-R50	SHELF-SIDE BURNER	SUPPORT DE BRÛLEUR DE CÔTÉ	1	1	•	•	1	1	•	•
123	S15115	GREASE PAN - DISPOSABLE	CUVETTE À GRAISSE	2	2	2	2	2	2	2	2
125	Y-12220	BUSHING	DOUILLE	1	1	•	•	1	1	•	•
135	Y-12119	3/8 HEYCO BUSHING	DOUILLE DE 3/8 HEYCO	1	1	•	•	1	1	•	•

