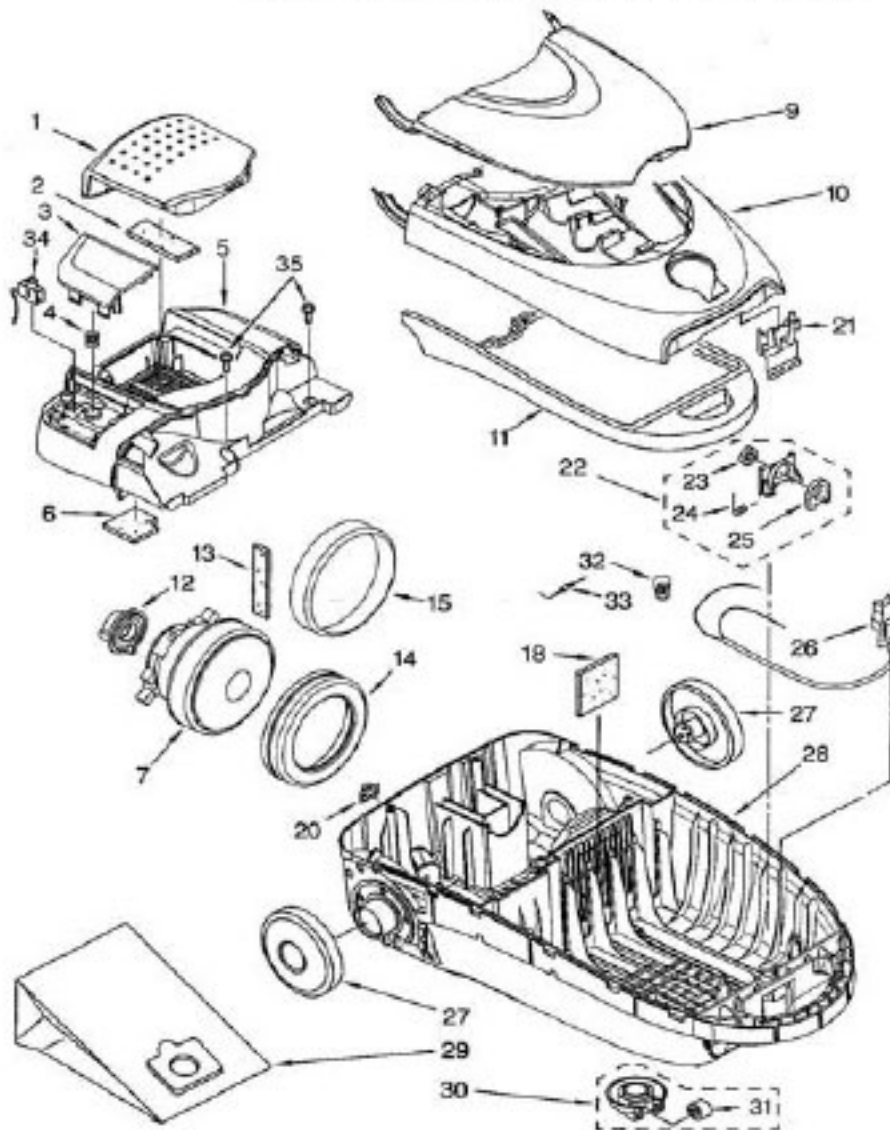


KENMORE Original & Replacement

CANISTER VACUUM Model 116.26212601

Power-Mate® Model: 116.56212601 Included with Canister.



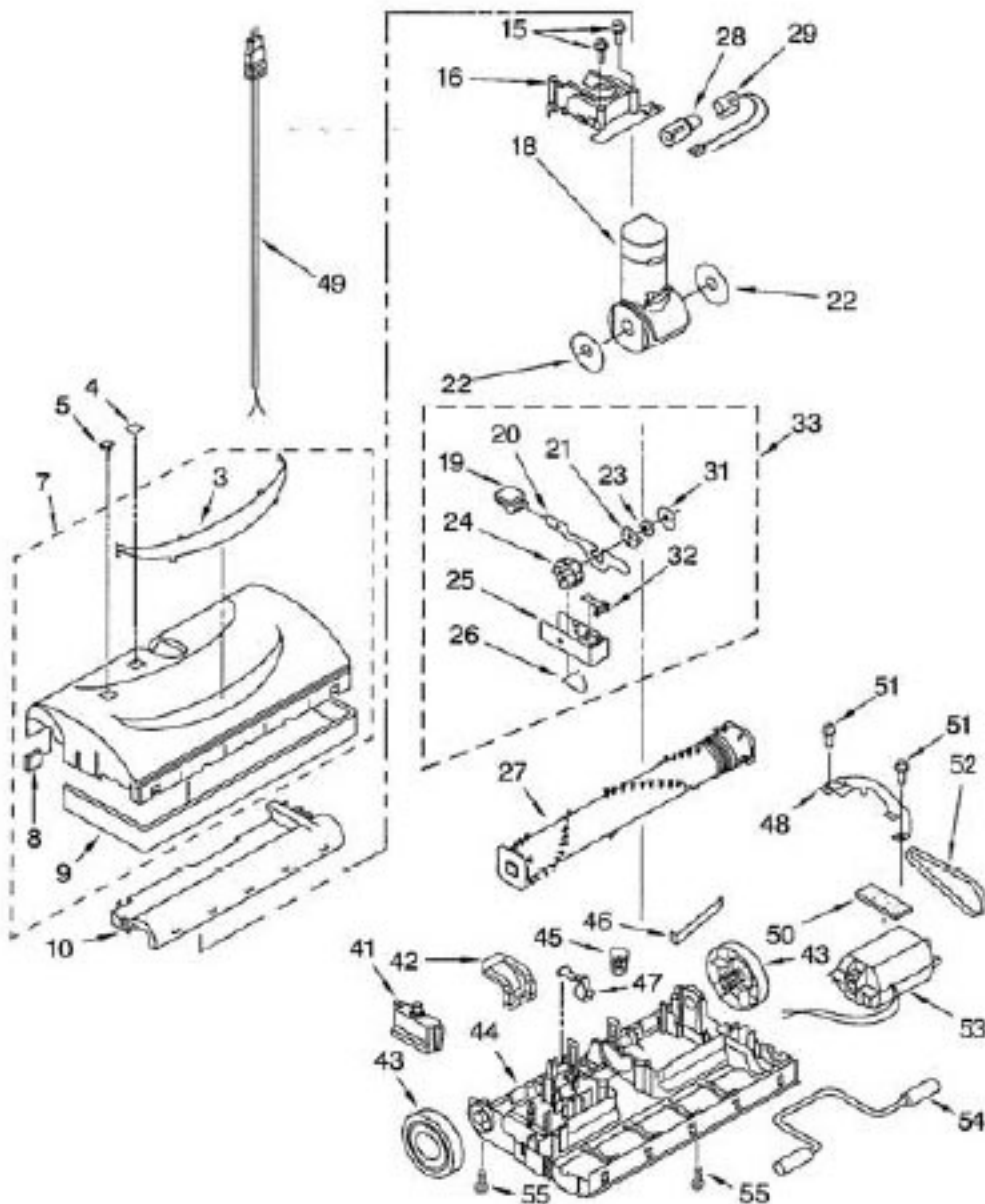
Original & Replacement **KENMORE** CANISTER VACUUM Model 116.26212601

KEY	PART NO.	DESCRIPTION
1	KE-8191689	COVER, FILTER
2	KER-1805	FILTER, EXHAUST SEARS NO. 20-86880/KENMORE STYLE NO. EF-2
3	KE-KC46NAXVZG0N	BUTTON, POWER ON/OFF
4	KE-8175183	SPRING, CORD BUTTON
5	KE-KC90QBPJ2G0N	CANOPY ASSEMBLY
6	KE-KC38KBAR1000	FILTER, SECONDARY
7	KE-KC92FCJNZ000	MOTOR, FAN
9	KE-KC74PCHZZGUN	TOOL COVER
10	KE-KC60KBPJZG0N	HOOD
11	KE-8191983	GUARD, FURNITURE
12	KE-8175182	SUPPORT, MOTOR REAR
13	KE-8174919	FILTER, MOTOR
14	KE-KC02FCUNZ000	SUPPORT, RUBBER FRONT MOTOR
15	KE-4369591	BELT
18	KER-1815	FILTER, MOTOR SAFETY (as of 9/23/08) SEARS NO. 20-86883/KENMORE STYLE NO. CF-
20	KE-4370314	HOOK, CORD
21	KE-8175094	LATCH, HOOD
22	KE-4370617	SUPPORT, BAG
23	KE-4370688	PACKING, INLET
24	KE-KS706024	SPRING, BAG MOUNT
25	KE-4370689	GASKET, BAG MOUNT
26	KE-8175144	RECEPTACLE, 2-WIRE
27	KE-8192663	WHEEL
28	KE-8192664	BASE, LOWER BODY
29	KER-14551	DUST BAG SEARS NO. 20-50558/KENMORE STYLE NO. C
30	KE-4370690	CASTER ROLLER UNIT
31	KE-4370691	CASTER ROLLER
32	KE-KS4154460	NUT, WIRE
33	KE-8175041	LEAD ASSEMBLY
34	KE-4370761	SWITCH, ON/OFF
35	KE-KS4148999	SCREW, CANOPY MOUNTING

KENMORE Original & Replacement

CANISTER VACUUM Model 116.26212601

For Models: 116.26212601

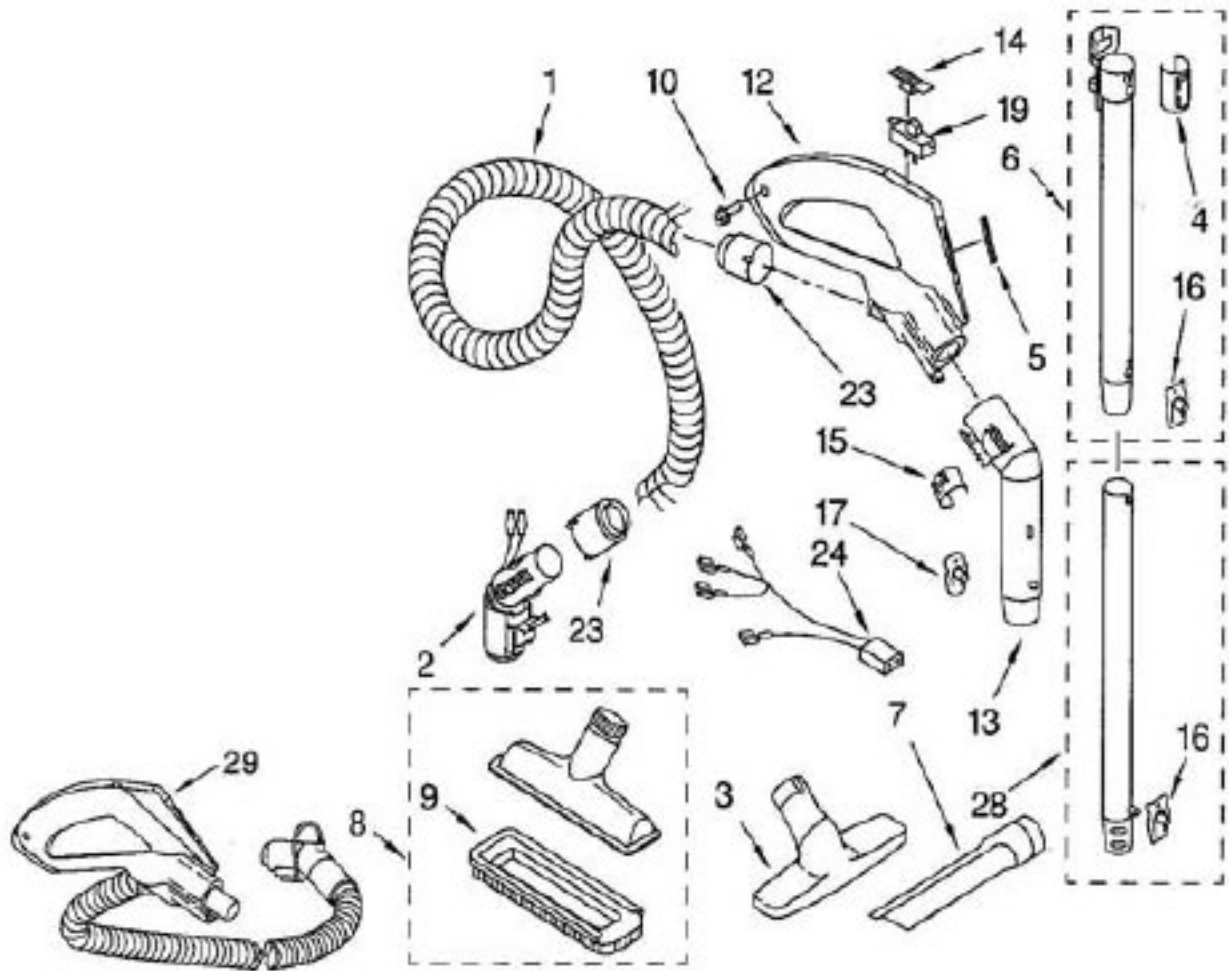


Original & Replacement **KENMORE** CANISTER VACUUM Model 116.26212601

KEY	PART NO.	DESCRIPTION
3	4370711	WINDOW, COVER (LIGHT)
4	4369687	WINDOW, COVER (HEIGHT ADJ.)
5	4370941	BUTTON, EXTENSION
7	KC98RCUZZG09	FLOOR NOZZLE UPPER UNIT (INCLUDES ILLUS. 3,8, AND 9)
8	4370713	FILTER, INTAKE/EXHAUST
9	KE-4370714	GUARD, FURNITURE
10	KE-4370715	COVER, AGITATOR
15	KE-KS681550	SCREW
16	KE-KC62VAKTZV06	SWIVEL CAP THERMAL UNIT
18	KE-KS4155049	SWIVEL
19	KE-4370577	PAD, FOOT PEDAL
20	KE-4370720	INDICATOR, LEVER
21	KE-KS722955	CATCH INDEXING
22	KE-KS742019	SWIVEL SEAL
23	KE-KS725635	WASHER
24	KE-KS747291	CAM, INDICATOR
25	KE-8195106	INDICATOR BLOCK
26	KE-KS725775	SPRING ASSIST
27	KE-8192535	AGITATOR UNIT
28	FA-3515	BULB SEARS NO. 20-5240
29	KE-8175249	SOCKET, BULB
31	KE-KS722909	WASHER, THRUST
32	KE-KS742016	RATCHET CATCH
33	KE-KC83MAKSZV06	INDICATOR BLOCK ASSEMBLY
41	KE-8175256	PROTECTOR, OVERLOAD
42	KE-KC47AGJ3V06	HANDLE RELEASE PEDAL
43	KE-4370724	WHEEL (REAR)
44	KE-4370725	FLOOR NOZZLE LOWER
45	KE-4368552	WIRE NUT
46	KE-KS742002	SPRING, MOTOR ADJUSTMENT
47	KE-4370726	LIFTER
48	KE-KS705093	MOTOR BRIDGE
49	KE-8192034	CORD AND PLUG
50	KE-KS747156	MOTOR GASKET
51	KE-KS681297	SCREW
52	KE-1000	BELT SEARS NO. 20-5201/KENMORE STYLE NO. CB-2
53	KE-8192730	MOTOR
54	KE-KS744029	FRONT AXLE ASSEMBLY
55	KE-KS681297	SCREW

KENMORE Original & Replacement

CANISTER VACUUM Model 116.26212601

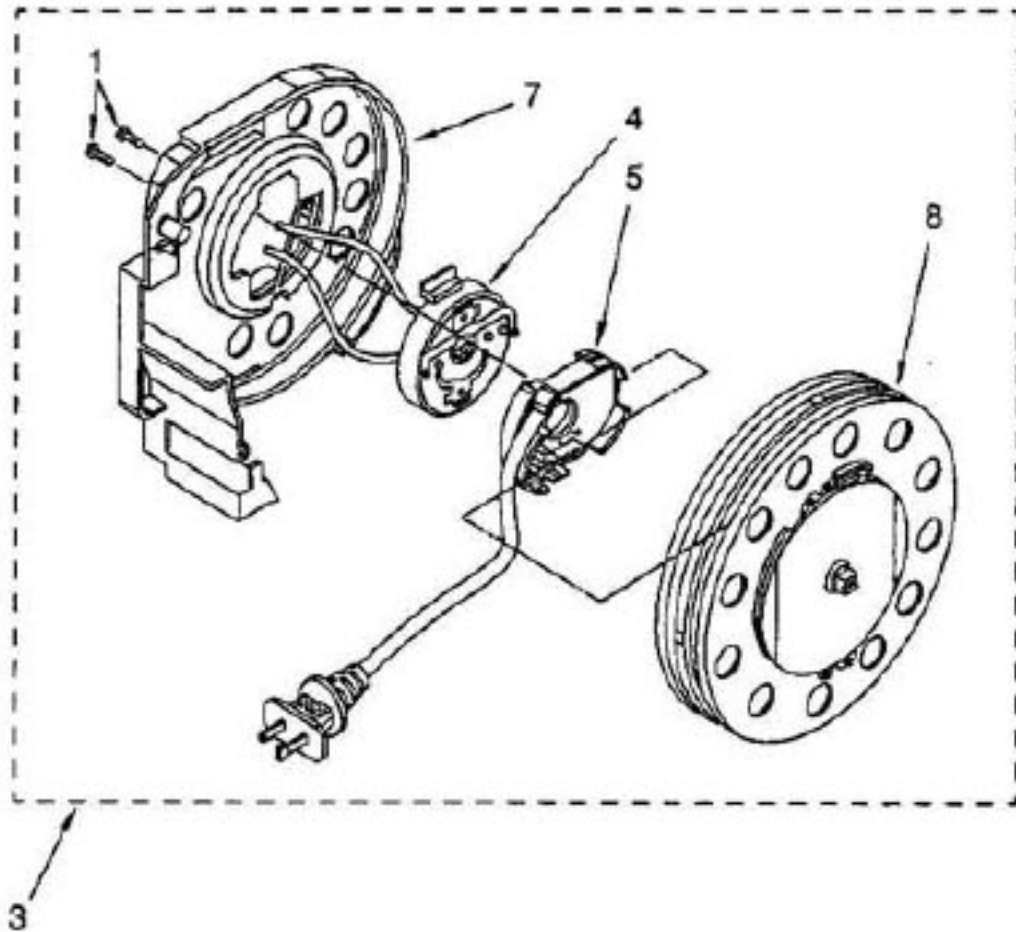


Original & Replacement **KENMORE**
CANISTER VACUUM Model 116.26212601

<u>KEY</u>	<u>PART NO.</u>	<u>DESCRIPTION</u>
1	KE-8175199	HOSE, 2-WIRE
2	KE-4370366	SWIVEL ASSEMBLY
3	KE-4370140	BRUSH, FLOOR
4	KE-8191628	QUICK RELEASE
5	KE-4370939	LABEL, HANDLE
6	KE-4370473	WAND (UPPER)
7	KE-8175100	TOOL, CREVICE
8	KE-8175098	BRUSH, COMBINATION
9	KE-8175099	HOLDER, BRUSH
10	KE-4369085	SCREW
12	KE-4370994	HANDLE ASSEMBLY
13	KE-4370996	TUBE, CENTER
14	KE-4370932	SLIDE, SWITCH
15	KE-4370593	CONTROL, SUCTION
16	KE-KS725419	SPRING, WAND LOCK
17	KE-4152093	SPRING, WAND LOCK
19	KE-4369245	SWITCH, 2-POSITION
23	KE-4370325	ADAPTER, HOSE
24	KE-4370928	HARNESS, WIRING
28	KE-4370489	WAND(LOWER)
29	KE-8175196	HOSE ASSEMBLY

KENMORE Original & Replacement

CANISTER VACUUM Model 116.26212601



Original & Replacement **KENMORE**
CANISTER VACUUM Model 116.26212601

<u>KEY</u>	<u>PART NO.</u>	<u>DESCRIPTION</u>
1	KE-4368563	SCREW
3	KE-8192089	CORD REEL (COMPLETE)
4	KE-4370924	CONTACT BASE
5	KE-8192088	CONTACT DISC ASSEMBLY RINGS (POWER CORD)
7	KE-8175105	BRACKET, CORD REEL
8	KE-8175156	HUB ASSEMBLY, CORD REEL