



Windsor VERSAMATIC VSE2-3 Owner's Manual

Shop genuine replacement parts for Windsor
VERSAMATIC VSE2-3

UPRIGHTS

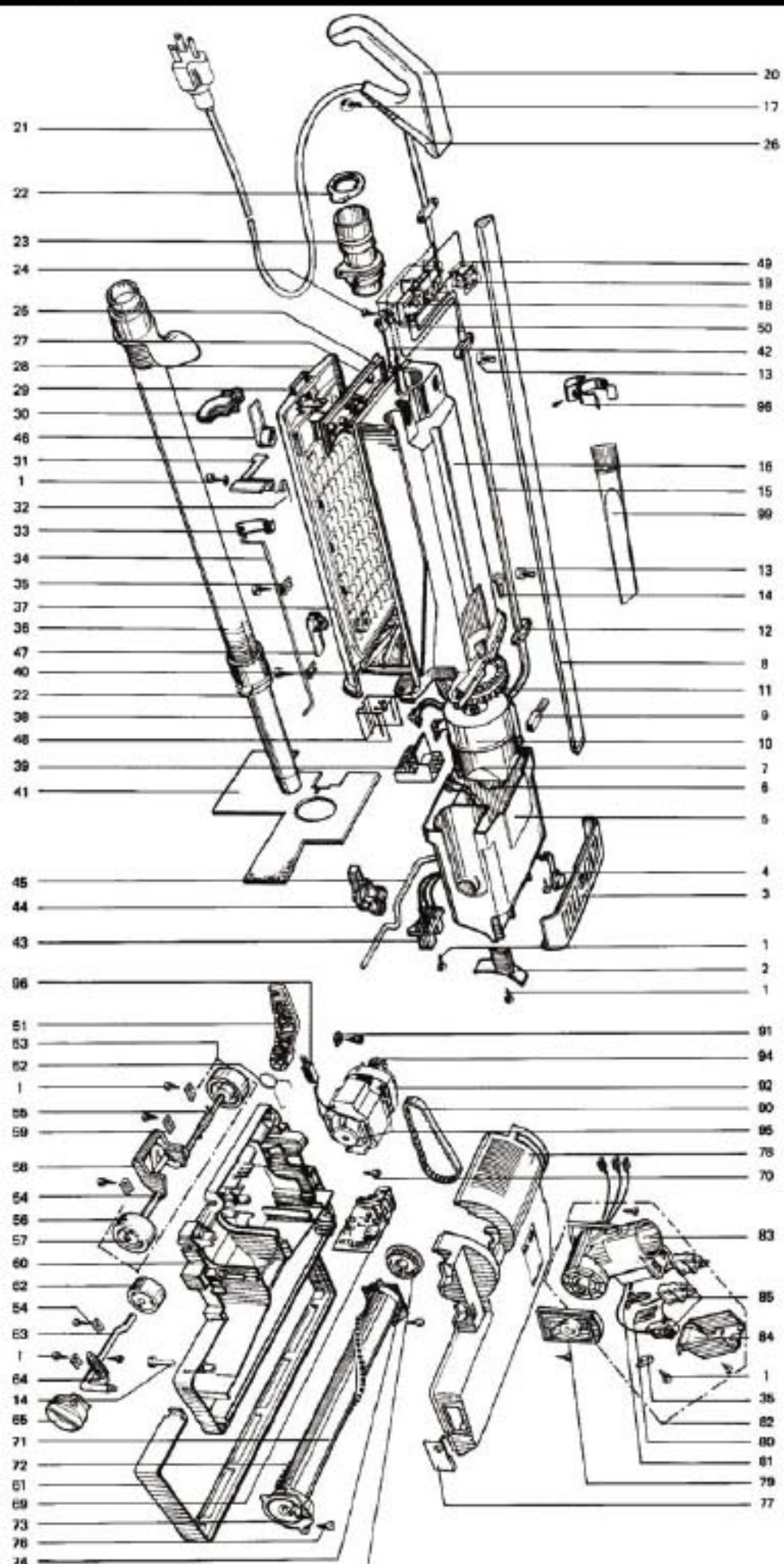
Models: Versamatic VSE1-3, VSE2-3

| | | |
|--|---|---|
| 1 WI-0102 Screw | 13 WI-0127 Screw | 25 WI-1420 Grommet |
| 2 WI-1529 Housing Cover | 14 WI-0111 Screw | 26 WI-1559WS Handle Grip Cover |
| 3 WI-1534 Exhaust Filter | 15 WI-1283 Internal Cable | 27 WI-1028UL Cover, switch housing |
| 4 WI-1535ER Retaining Button, filter | 16 WI-1514BL Housing, dust bag | 28 WI-1135BL Back Cover |
| 5 WI-1515M Motor Housing | 17 WI-0170 Screw | 29 WI-1057BL Lock, w/ spring & pins |
| 6 WI-1411 Motor Support | 18 WI-1477UL Plated Circuit Board | 30 WI-1069UL Switch Holder |
| 7 WI-1420JL Motor Cover | 19 WI-0517 Switch | 31 WI-1040 Lever, dust bag |
| 8 WI-1542 Handle | 20 WI-1583WS Handle Grip | 32 WI-1041 Return Spring |
| 9 WI-0511 Carbon Brush | 21 WI-2011 Cable, 3-wire | 33 WI-1027 Leaf Spring |
| 10 WI-1419 Vacuum Motor | 22 WI-1034 Retaining Ring | 34 WI-1025 Connecting Flood |
| 11 WI-1047 Seal, vacuum motor | 23 WI-1038BL Connecting Tube | 35 WI-1073 Clamo |
| 12 WI-1030UL Cable Clamp | 24 WI-0101 Screw | 36 WI-1516 Hose |
| | | 37 WI-1059 Seal, back cover |
| | | 38 WI-1517 Hand Nozzle |
| | | 39 WI-1265UL Terminal Block |
| | | 40 WI-1044 Filter, vacuum motor |
| | | 41 WI-1543 Sound Insulation |
| | | 42 WI-0819 Amistatic Wire |
| | | 43 WI-1545UL Holder, female contact, 3-wire |
| | | 44 WI-0819 Locking Catch |
| | | 45 WI-1530 Locking Rod |
| | | 46 WI-1461BL Cable Hook |
| | | 47 WI-1462BL Cable Hook, turnable |
| | | 48 WI-1280 Cover, switch |
| | | 49 WI-1281 Cover, PC board |
| | | 50 WI-0504 Cover, terminal block |
| | | 51 WI-2531 Support Lever |
| | | 52 WI-2545 Return Spring |
| | | 53 WI-2539 Axle Assy, VSE1-3 |
| | | 53 WI-4519 Axle Assy, VSE2-3 |
| | | 54 WI-2525 Axle, VSE1-3 |
| | | 54 WI-4523 Axle, VSE2-3 |
| | | 55 WI-2010 Axle Spring |
| | | 56 WI-2012 Wheel, VSE1-3 |
| | | 56 WI-4009 Wheel, VSE2-3 |
| | | 57 WI-0308 End Cap |
| | | 58 WI-2529 Foot Pedal |
| | | 59 WI-2014 Clamo |
| | | 60 WI-2543BL Chassis, VSE1-3 |
| | | 60 WI-4526BL Chassis, VSE2-3 |
| | | 61 WI-2522WS Bumper, VSE1-3 |
| | | 61 WI-4522WS Bumper, VSE2-3 |
| | | 62 WI-4072 Pile Adjust Wheel |
| | | 63 WI-2524 Axle, pile adjust, VSE1-3 |
| | | 63 WI-4006 Axle, pile adjust, VSE2-3 |
| | | 64 WI-4019 Spring |
| | | 65 WI-4013 Button, pile adjustment |
| | | 69 WI-2572ER PC Board, VSE1-3 |
| | | 69 WI-4532ER PC Board, VSE2-3 |
| | | 70 WI-0115 Screw |
| | | 71 WI-2009ER Brush Roll, no ends, VSE1-3 |
| | | 71 WI-4033ER Brush Roll, no ends, VSE2-3 |
| | | 72 WI-2046 Brush Strip, VSE1-3 |
| | | 72 WI-4039 Brush Strip, VSE2-3 |
| | | 73 WI-2047 Bearing Block, RH |
| | | 74 WI-2091 Bearing Block, LH |
| | | 75 WI-2458 Pulley, brush roll |
| | | 76 WI-0103 Screw |
| | | 77 WI-2542 Brush Strip Cover, wirescrew |
| | | 78 WI-2544M Cover, VSE1-3 |
| | | 78 WI-4530BLU Cover, VSE2-3 |
| | | 79 WI-2538 Swivel Support |
| | | 80 WI-2546 Leaf Spring |
| | | 81 WI-2534 Switch Lever |
| | | 82 WI-2510UL Swivel Neck Assy, 3-wire |
| | | 83 WI-2529UL Swivel Neck |
| | | 84 WI-2530 Cover, swivel neck |
| | | 85 WI-2541UL Wire-on Swivel Neck, w/col |
| | | 90 WI-4024 Drive Belt |
| | | 91 WI-0141 Locking Washer |
| | | 92 WI-2241UE Brush Motor, 150w, VSE1-3 |
| | | 92 WI-4022UE Brush Motor, 200w, VSE2-3 |
| | | 94 WI-2025 Motor Pulley |
| | | 95 WI-0207 Ball Bearing, motor |
| | | 96 WI-0512 Carbon Brush |
| | | 98 WI-1081 Clip |
| | | 99 WI-1052 Crinkle Tool |
| | | WI-2003CS Paper Bags, 10 pk |
| | | WI-1079 Cloth Bag Assembly |
| | | REPLACEMENT PARTS "MADE TO FIT" |
| | | 396 Paper Bags, 10 pack |
| | | WI-130 Belt, sol. each |

Find Your Windsor Vacuum Cleaner Parts - Select From 26 Models

----- Manual continues below -----

Models: Versamatic VSE1-3, VSE2-3



- 25 WI-1420
- 26 WI-1596
- 27 WI-1026
- 28 WI-1139
- 29 WI-1057
- 30 WI-1069
- 31 WI-1040
- 32 WI-1041
- 33 WI-1027
- 34 WI-1025
- 35 WI-1073
- 36 WI-1516
- 37 WI-1059
- 38 WI-1517
- 39 WI-1265
- 40 WI-1044
- 41 WI-1543
- 42 WI-0818
- 43 WI-1545
- 44 WI-0819
- 45 WI-1530
- 46 WI-1461
- 47 WI-1462
- 48 WI-1524
- 49 WI-1280
- 50 WI-1281
- 51 WI-2531
- 52 WI-2545
- 53 WI-2539
- 53 WI-4519
- 54 WI-2525
- 54 WI-4523
- 55 WI-2010
- 56 WI-2012
- 56 WI-4009
- 57 WI-0030
- 58 WI-2528
- 59 WI-2014
- 60 WI-2543
- 60 WI-4529
- 61 WI-2522
- 61 WI-4522
- 62 WI-4072
- 63 WI-2524
- 63 WI-4006
- 64 WI-4019
- 65 WI-4013
- 69 WI-2572
- 69 WI-4532
- 70 WI-0105
- 71 WI-2030
- 71 WI-4033
- 72 WI-2046
- 72 WI-4028
- 73 WI-2047
- 74 WI-2091
- 75 WI-2458
- 76 WI-0103
- 77 WI-2542
- 78 WI-2544
- 78 WI-4530
- 79 WI-2538
- 80 WI-2546
- 81 WI-2534
- 82 WI-2510
- 83 WI-2529
- 84 WI-2530
- 85 WI-2541