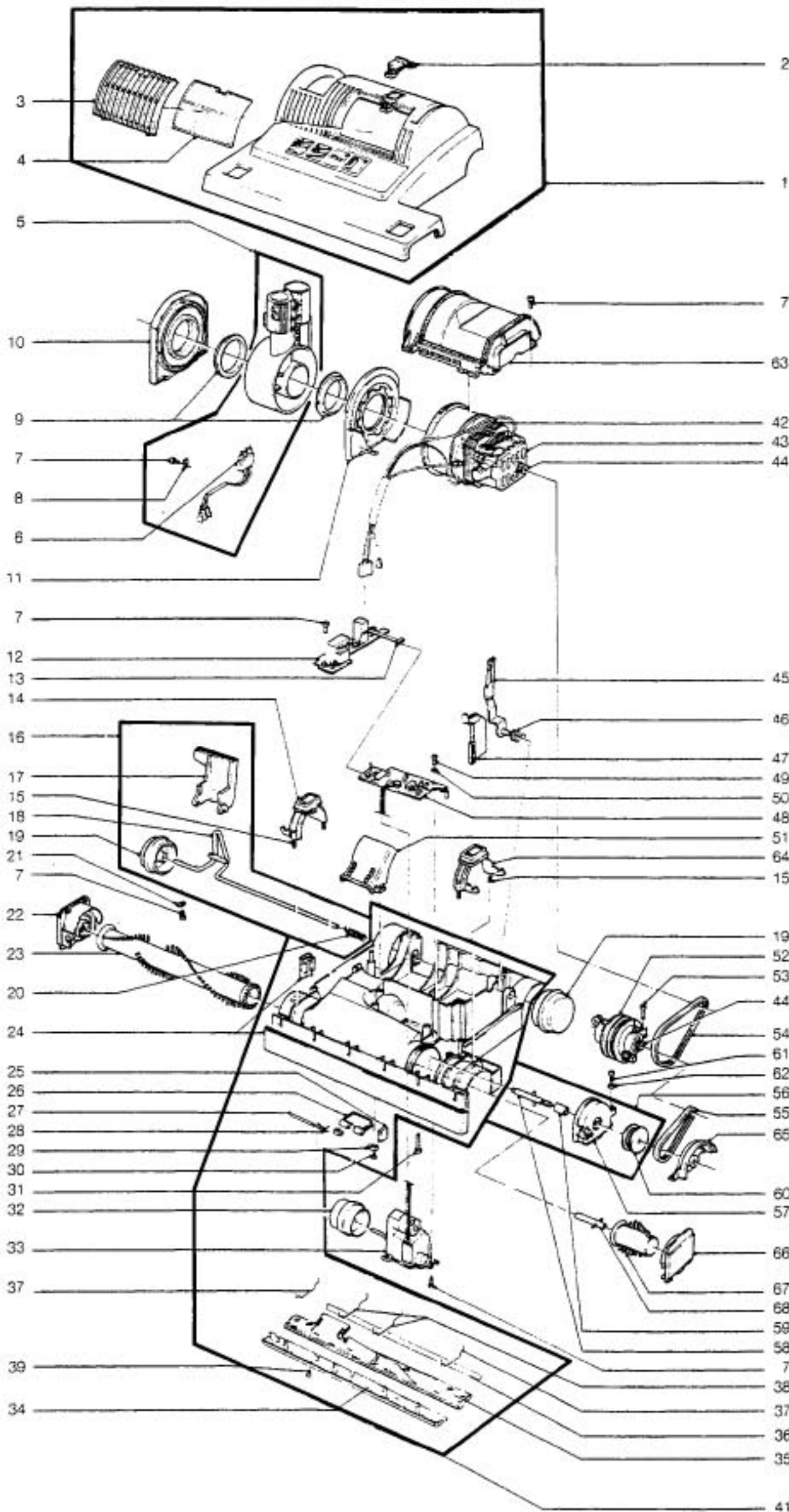
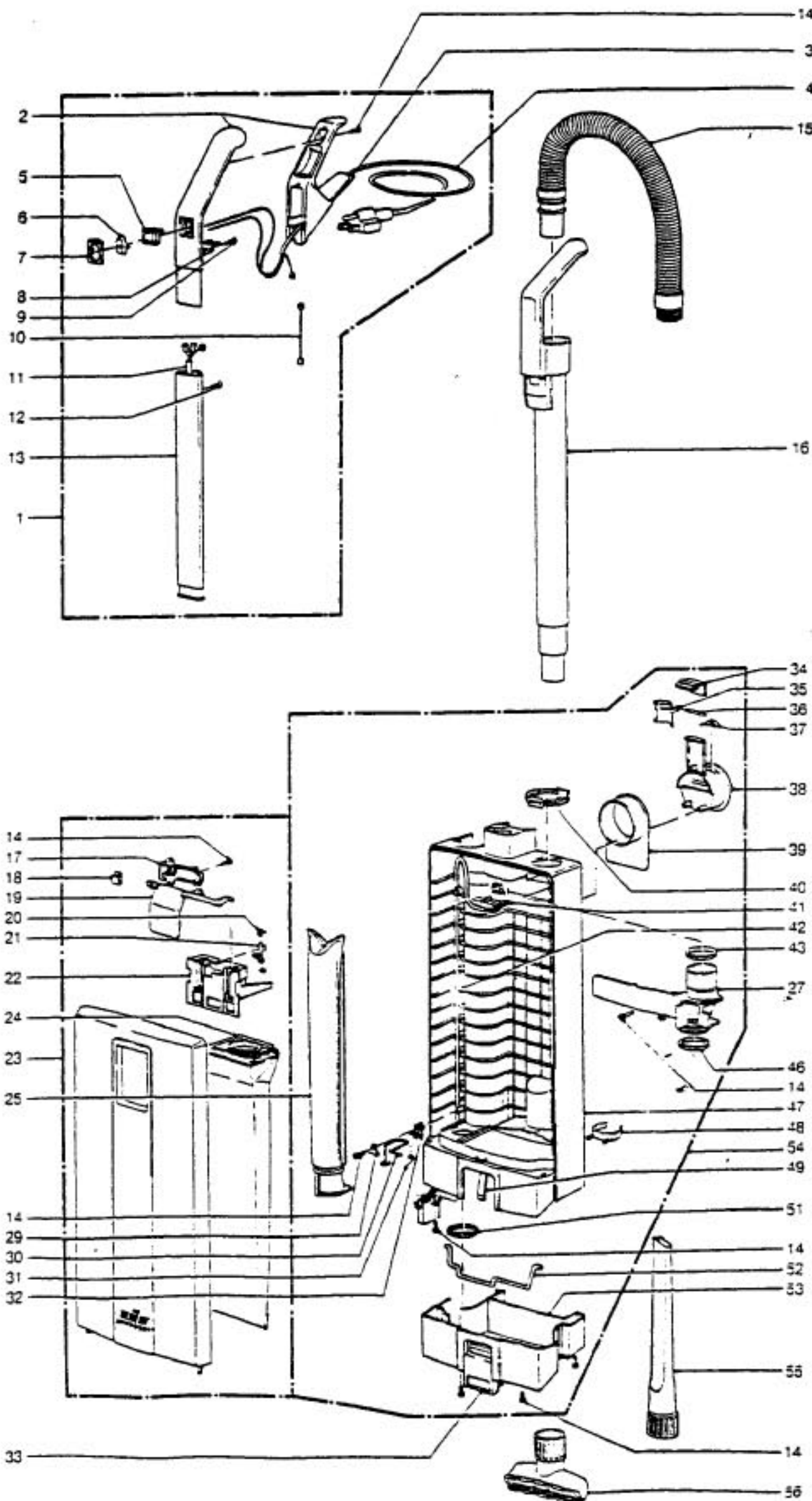


Models: Sensor SR12, SR15, SR18



Index	Part No.	Description
1	WI-5346UL	Cover, complete, SR12
	WI-5347UL	Cover, complete, SR15
	WI-5348UL	Cover, complete, SR18
2	WI-5008BL	Catch, exhaust filter
3	WI-5007UL	Cover, exhaust filter
4	WI-5143	Exhaust Filter
5	WI-5257HG	Swivel Neck
6	WI-5258UL	Male Contact Holder
7	WI-0102	Screw
8	WI-2494	Cable Clamp
9	WI-5101	Sleeve
10	WI-5178	Support, swivel neck, right
11	WI-5177	Support, swivel neck, left
12	WI-5203ER	12v Power Supply
13	WI-5205	Ribbon Cable
14	WI-5102BL	Brush Roller Release
15	WI-5103	Spring
16	WI-5051HG	Axle Assembly
17	WI-5059	Foot Pedal
18	WI-5053	Axle
19	WI-5055HG	Wheel
20	WI-2010	Axle Spring
21	WI-2014	Axle Clamp
22	WI-5287BL	Bearing Block, right side
23	WI-5010WI	Brush Roll, SR12
	WI-5290WI	Brush Roll (includes edge brush), SR15
	WI-5276WI	Brush Roll (includes edge brush), SR18
24	WI-5005HG	Bumper, SR12
	WI-5230HG	Bumper, SR15
	WI-5231HG	Bumper, SR18
25	WI-5155HG	Rubbing Plate
26	WI-5172OR	Access Door
27	WI-5303	Axle, access door
28	WI-5304	Spring, access door
29	WI-5154HG	Hinge
30	WI-0100	Screw
31	WI-0176	Screw
32	WI-5174HG	Pile Adjustment Wheel
33	WI-5060ER	Servo Motor, w/ gear box
34	WI-5411HG	Bottom Plate, SR12
	WI-5413HG	Bottom Plate, SR15
	WI-5275	Bottom Plate, SR18
35	WI-5412HG	Rear Bottom Plate, SR12
	WI-5414HG	Rear Bottom Plate, SR15
	WI-5416HG	Rear Bottom Plate, SR18
36	WI-54001	Sealing strip, SR12
	WI-54002	Sealing strip, SR15/SR18
37	WI-5401	Wire tie
38	WI-5402	Wire tie
39	WI-0112	Screw
41	WI-5320UL	Chassis, complete, SR12
	WI-5321UL	Chassis, complete, SR15
	WI-5322UL	Chassis, complete, SR18
42	WI-0511	Carbon brush vacuum motor
	WI-5272UL	Motor, 850W, 120V
43	WI-5100	Rubber mounting
44	WI-5117	Motor pulley
45	WI-5129	Support lever
46	WI-5107	Support spring
47	WI-5112SW	Motor pulley cover
48	WI-5740	Computer controller
49	WI-0107	Screw
50	WI-0143	Washer
51	WI-5173SW	Cover for air channel
52	WI-5318UL	Sensor, SR12
	WI-5331UL	Sensor, SR15/SR18
53	WI-0104	Screw
54	WI-5379	Belt
55	WI-5110	Belt
56	WI-5029HG	Bearing block, l.h. complete, SR12
	WI-5242HG	Bearing block, l.h. complete, SR15/SR18
57	WI-5044HG	Bearing block, l.h. SR12
	WI-5243HG	Bearing block, l.h. SR15/SR18
58	WI-5017	Drive shaft, SR12
	WI-5236	Drive Shaft, SR15/SR18
59	WI-5327	Bushing
60	WI-5179	Clutch
61	WI-0103	Screw
62	WI-0141	Locking washer
63	WI-5018UL	Motor cover
64	WI-5239BL	Brush roller release
65	WI-5244HG	Seal bearing
66	WI-5288BL	Brush cover
67	N/A	Edge brush
68	WI-5246	Shaft extension, complete

Models: Sensor SR12, SR15, SR18



Index	Part No.	Description
1	WI-5625UL	Handle, complete
2	WI-5296EW	Handle Grip
3	WI-5359HG	Grommet
4	WI-23011	Cable
5	WI-0532	Switch
6	WI-5160BL	Switch Cap
7	WI-5161HG	Holder, switch cap
8	WI-5162	Cable Clamp
9	WI-0103	Screw
10	WI-0846	Antistatic Wire
11	WI-5256ER	Handle Cable
12	WI-0129	Screw
13	WI-5187	Handle Tube
14	WI-0102	Screw
15	WI-5040HG	Hose
16	WI-5045HG	Extension Tube, w/o hose
17	WI-5307	Cover
18	WI-5319	Spring, bag holder
19	WI-5306BL	Cover Release
20	WI-5091	Spring, safety catch
21	WI-5360	Safety Catch
22	WI-5324	Bag Holder
23	WI-5286WI	Front Cover, complete
24	WI-5300CS	Paper Bags, 10 pack
25	WI-5301ER	Filter, micro hygiene
27	WI-5380HG	Internal Cover
29	WI-1073	Clamp
30	WI-5208	Filter, safety catch
31	WI-5210	Spring
32	WI-5164	Cable Clamp
33	WI-5082BL	Locking Catch, dust bag housing
34	WI-5098HG	Lock Catch
35	WI-5099	Lock Plate, handle
36	WI-0187	Lock Pin
37	WI-5146	Stop Spring
38	WI-5145HG	Carrying Handle
39	WI-5144HG	Cable Hook
40	WI-5137HG	Retaining Ring
41	WI-5255ER	Internal Cable
42	WI-5266	Cable Clamp
43	WI-5043	Seal
46	WI-5289	Seal
47	WI-5281HG	Dust Bag Housing
48	WI-5128	Spring, upholstery nozzle
49	WI-5084	Spring
50	WI-5127	Spring, crevice tool
51	WI-5163	Seal
52	WI-5083	Locking Rod
53	WI-5085HG	Bumper Base, dust bag housing
54	WI-5215UL	Dust Bag Housing, complete
55	WI-1092HG	Crevice Tool
56	WI-1491HG	Upholstery Nozzle