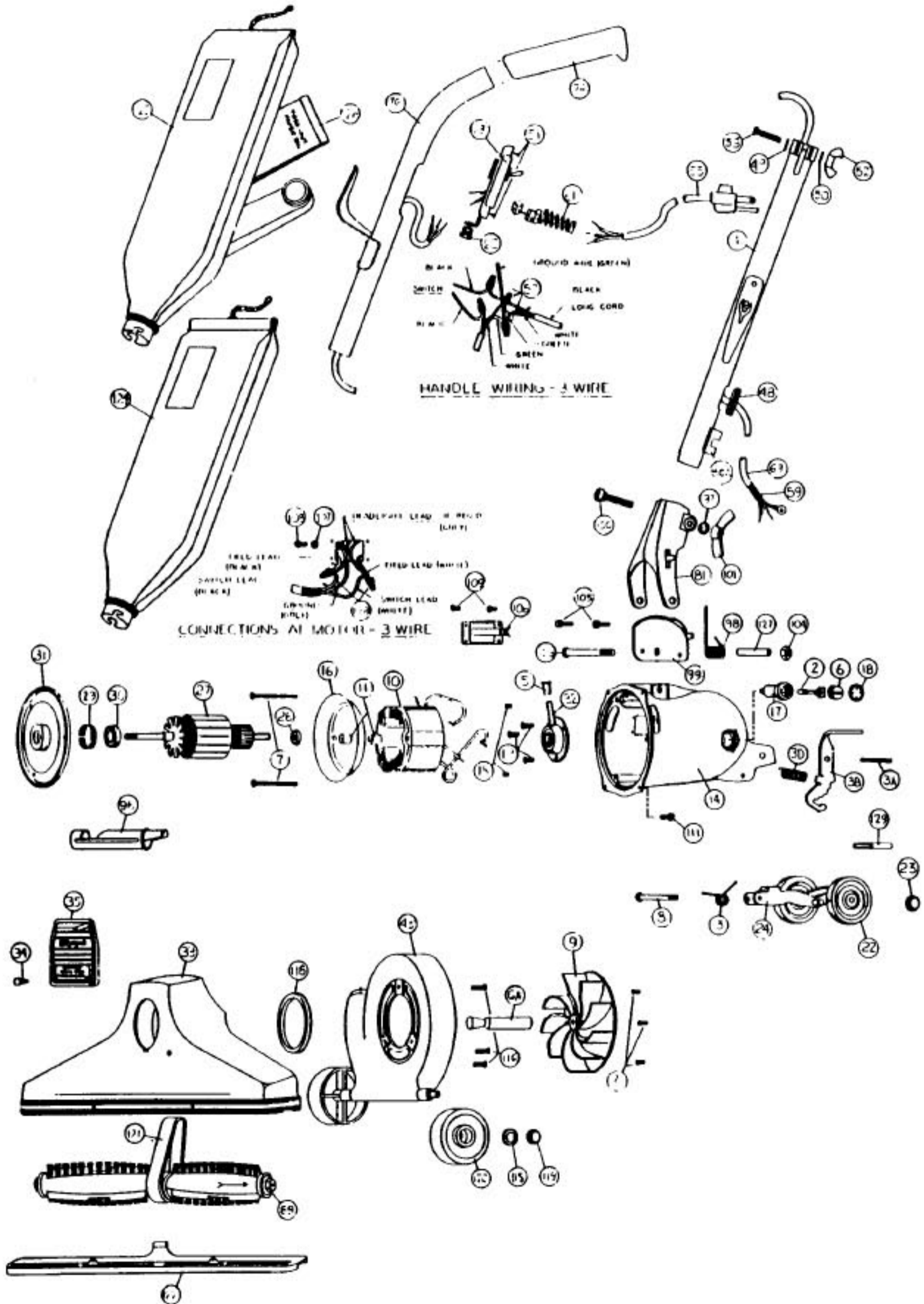


Models: 381



Models: 381

	NLA	Motor Unit Assy	53	R-801712	Screw, adaptor clamp
2	NLA	Carbon Brush Assy		R-060831	Switch & Cord Assembly, 50 ft
3	R-003008	Spring, rear fork	55	NLA	Cord & Plug Assembly, 50 ft
3A	R-670705	Spring Pin	61	R-259761	Wire Connector
3B	R-690715	Release Pedal, incremental	62	R-880304	Strain Relief, handle
3D	R-672009	Spring, release pedal	63	R-060837	Switch & Plate Assembly
4	R-670013	Screw, motor plate ret.	69	NLA	Short Cord & Lug Assembly
5	R-065028	Oiler Cap	70	NLA	Upper Handle Assembly
6	R-672103	Brush Holder & Screw Assembly	74	R-801314	Handle Grip
6A	R-380261	Drive Shaft	76	R-0655330	Handle Adaptor Assembly
7	R-618016	Screw, field retainer	80A	R-670844	Cord, clip
8	R-311031	Screw & Washer Assembly	81	R-028580	Handle Fork & Latch Assy
9	R-608005	Fan, heavy duty	89	R-692225	Revolving Brush Assembly
10	R-780002	Field, 120v	96	R-880262	Belt Lifter
11	R-618772	Spacer, baffle	97	R-003311	Washer, handle clamp bolt
14	NLA	Motor Housing Assembly	98	R-004723	Handle Ford Spring
15	R-801014	Set Screw, brush holder	99	R-133714	Handle Stop Plate
16	R-801017	Baffle Plate	100	R-230713	Bolt, handle clamp
17	R-801019	Brush Holder	101	R-285720	Wingnut, large
18	R-801034	Brush Holder Protector Cap	103	R-801708	Bolt, handle fork ret.
19	R-801701	Screw, rear bearing retainer	104	R-801714	Nut, nylon insert
	R-067105	Rear Wheel, Fork & Shaft Assy	105	R-990104	Screw, handle stop plate
22	R-880705	Wheel, 2 1/2" diam.	106	R-183749	Side Plate
23	NLA	Wheel Retainer	107	R-006318	Lockwasher
24	R-670007	Rear Fork & Shaft Assembly	108	R-880707	Screw, ground lead
	R-068007	Motor Plate & Armature Assy	109	R-360753	Screw, side plate
26	R-175053	Washer, oil slinger	111	R-980743	Screw, motor housing
27	R-780001	Armature, 120v	115	R-005138	Washer, wheel retainer
	NLA	Motor Plate & Bearing Assy	116	R-023309	Screw, nozzle & fan case
29	R-880046	Tolerance Ring	118	R-2854270	Gasket, nozzle sealing
30	R-880026	Ball Bearing	119	R-801711A	Wheel Retainer
31	R-884003	Motor Plate	120	R-671705	Wheel, wide
32	R-080126	Rear Bearing Assembly	121	R-672260	Belt
33	R-381026	Nozzle Assembly	122	R-692270	Nozzle Guard
34	NLA	Rivet, nozzle plug	124	R-066240	Bag Assy, shakeout, 691
35	R-670744B	Nozzle Plug	125	R-0662421	Bag Assy, zipper, 691Z
43	R-670118	Fancase Assembly	126	R-66247	Paper Bag
	R-067030	Handle & Cord Assembly, 50ft	127	R-110773	Insert, motor housing
48	R-230324	Grommet	128	R-259762	Wire Connector
49	R-003311	Washer, adaptor clamp screw	129	R-1300086	Foot Adjustment Cover
50	R-023311	Lockwasher			
51	R-801701	Screw, switch plate			
52	R-801710	Wingnut, small			