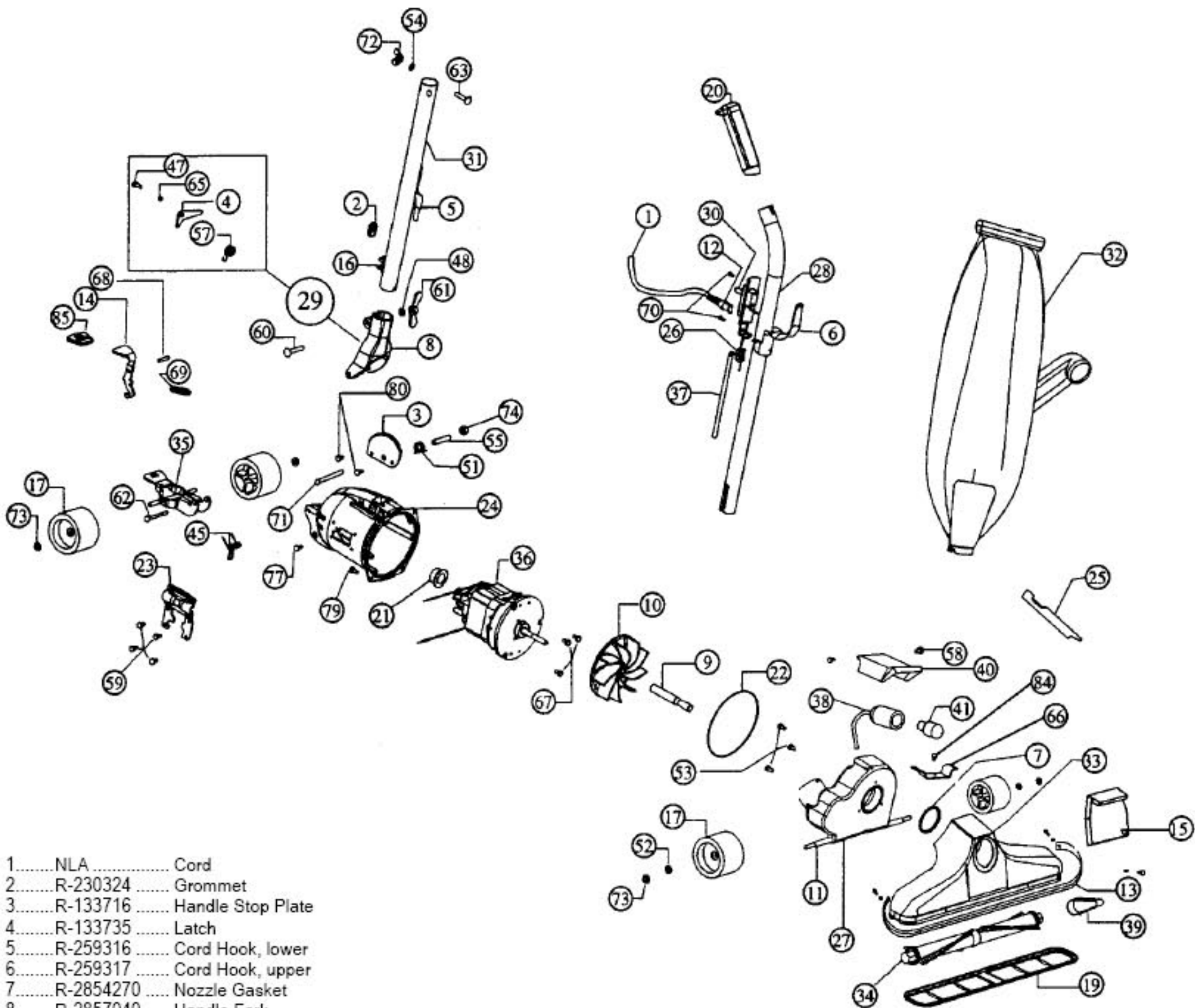


Models: 1040

For hardware items NOT listed in this schematic, refer to page 77.



- 1.....NLA Cord
- 2.....R-230324 Grommet
- 3.....R-133716 Handle Stop Plate
- 4.....R-133735 Latch
- 5.....R-259316 Cord Hook, lower
- 6.....R-259317 Cord Hook, upper
- 7.....R-2854270 Nozzle Gasket
- 8.....R-2857040 Handle Fork
- 9.....R-380261 Shaft Extension
- 10.....R-608005 Fan
- 11.....R-611101 Axle Stud
- 12.....R-322305 Strain Relief, flex type
- 13.....R-8012018 Bumper
- 14.....R-690715 Release Pedal, incremental
- 15.....R-670744B Nozzle Plug
- 16.....R-670844 Cord Clip
- 17.....R-880705 Wheel
- 18.....R-672260 Belt
- 19.....R-672270 Nozzle Guard
- 20.....R-801314\G... Grip, handle
- 21.....R-870006 Motor Grommet
- 22.....R-870014 Motor Housing O-Ring
- 23.....R-870130 Side Plate
- 24.....R-871101 Motor Housing
- 25.....R-880262 Belt Lifter
- 26.....R-880304 Strain Relief

- 27.....R-101161 Fancase Assembly
- 28.....R-891052 Upper Handle Assembly, w/ #6,20
- 29.....R-028580 Handle Fork and Latch Assembly
- 30.....R-163309 Switch
- 31.....R-065534 Handle Adaptor Assembly, w/ #5,16
- 32.....R-066240 Hinged Bag Assembly
- 32.....R-0662421 Zipper Bag Assy, grey, w/ inlet
- 33.....R-673026 Nozzle Assembly, w/ #13,15
- 34.....R-673273 Brush Roll Assy
- 35.....R-670007 Wheel Fork & Axle Assy
- 36.....R-701020 Motor Assy
- 37.....R-703236 Short Cord, black
- 38.....R-870065 Light Socket and Cord Assembly
- 39.....R-8012018 Bumper
- 40.....R-606628 Light Casting
- 41.....R-725629 Light Bulb, 12 volt