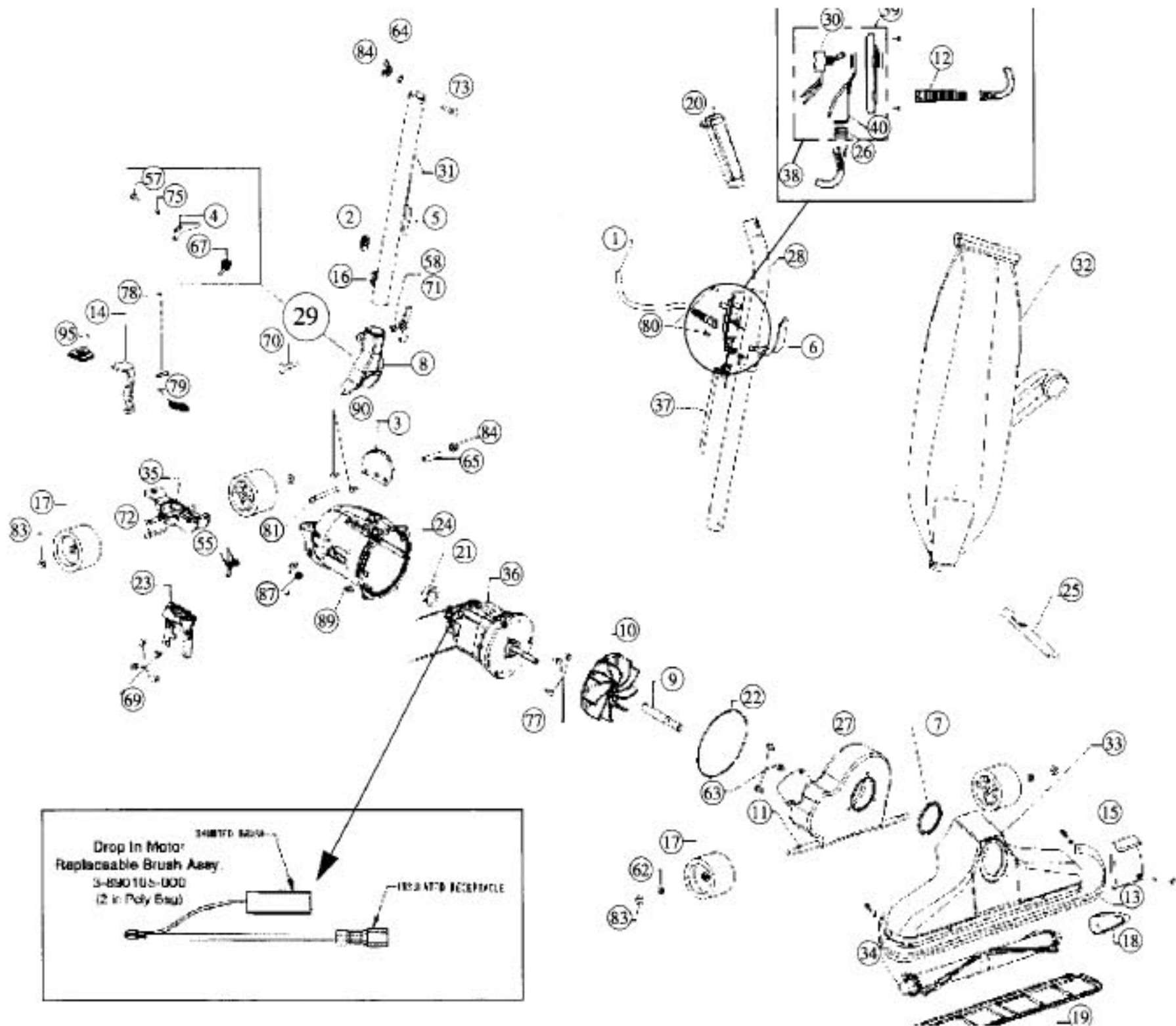


Models: 1050, 1058, 1058Z

For hardware items NOT listed in this schematic, refer to page 77.



- 1.....R-061136B.....Cord
- 2.....R-230324.....Grommet
- 3.....R-133716.....Handle Stop Plate
- 4.....R-133737.....Latch
- 5.....R-259316.....Cord Hook, lower
- 6.....R-259317.....Cord Hook, upper
- 7.....R-285427.....Nozzle Gasket
- 8.....R-285704.....Handle Fork
- 9.....R-380261.....Shaft Extension
- 10.....R-608005.....Fan
- 11.....R-618101.....Axle Stud
- 12.....R-611305.....Strain Relief
- 13.....R-618201.....Bumper, grey
- 14.....R-690715.....Release Peda
- 15.....R-670744.....Nozzle Plug, grey
- 16.....R-670844.....Cord Clip
- 17.....R-671705.....Wheel
- 18.....R-672260.....Belt
- 19.....R-692270.....Nozzle Guard, 18"
- 20.....R-801314G.....Grip, handle
- 21.....R-870006.....Motor Grommet
- 22.....R-870024.....Motor Housing O-Ring
- 23.....R-870130.....Side Plate
- 24.....R-871101.....Motor Housing
- 25.....R-880262.....Belt Lifter

- 26.....R-880304.....Strain Relief
- 27.....R-670118.....Fancase Assembly
- 28.....R-891052.....Upper Handle Assembly w/ #6,20
- 29.....R-028580.....Handle Fork and Latch Assembly
- 30.....R-163309.....Switch
- 31.....R-891061.....Handle Adaptor Assembly
- 32.....R-066240.....Hinged Bag Assembly
- 33.....R-381309.....Nozzle Assembly w/ #13,15
- 34.....R-692225.....Brush Roll Assy
- 35.....R-670007.....Wheel Fork & Axle Assy
- 36.....R-870102.....Motor Assy, 1050
- 36.....R-870114.....Motor Assy, 1058, 1058Z
- 37.....R-870323.....Short Cord, black
- R-060837.....Switch & Plate Assy
- R-608303.....Switch Plate
- R-031103.....Strain Relief