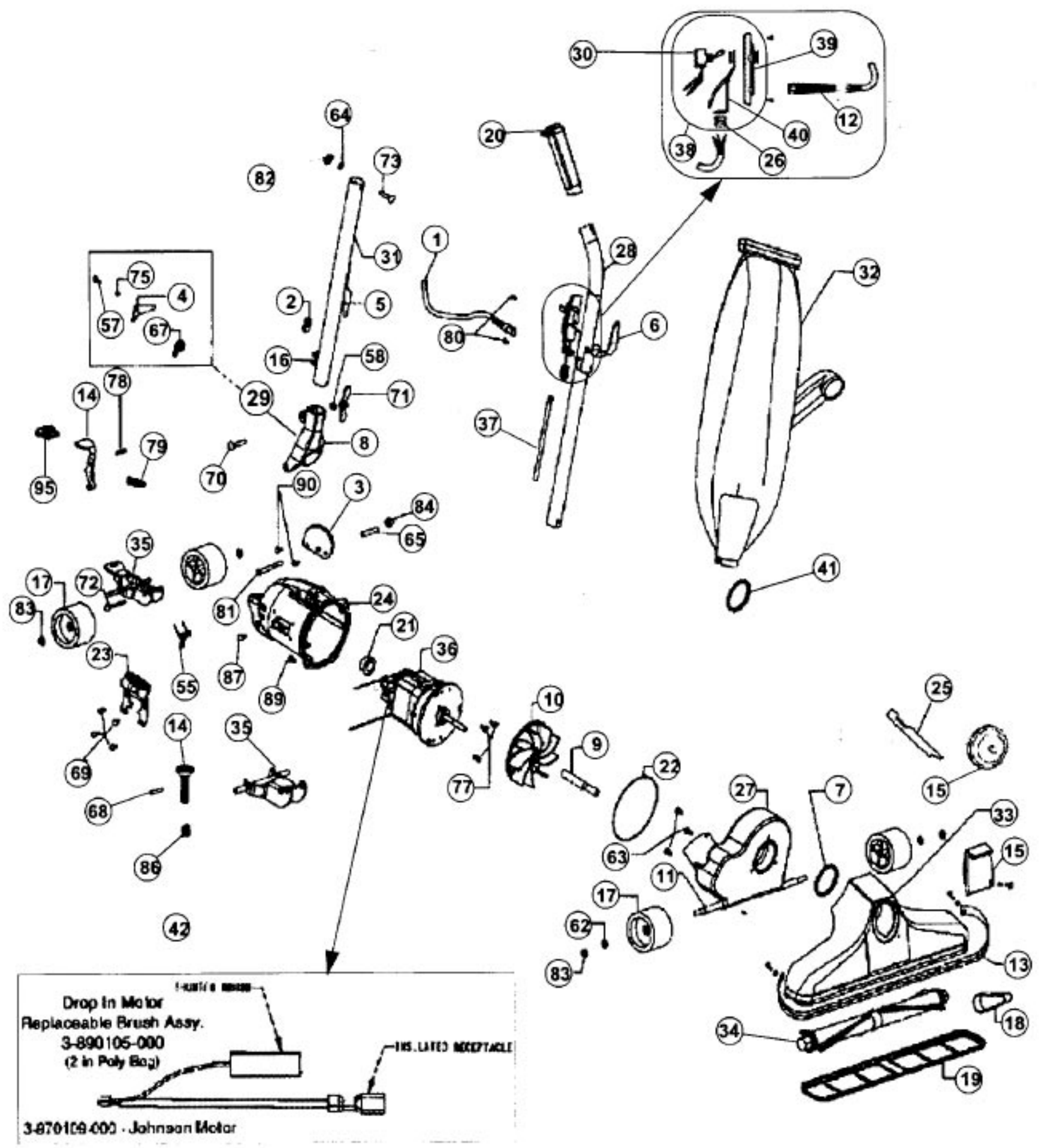


Model: 1058, 1058Z



Model: 1058, 1058Z

| Index | Part No.  | Description                                    |
|-------|-----------|--|
| 1     | R-061136  | Cord, 50 ft, orange                            |
| 2     | R-230324  | Grommet  |
| 3     | R-133716  | Handle stop plate                              |
| 4     | R-133737  | Handle fork latch                              |
| 5     | R-259316  | Cord hook, lower                               |
| 6     | R-259317  | Cord hook upper                                |
| 7     | R-2854270 | Gasket, nozzle sealing                         |
| 8     | R-2857040 | Handle fork, polished                          |
| 9     | R-380262  | Shaft extension                                |
| 10    | R-608005  | Fan, slip on                                   |
| 11    | R-618101  | Axle stud                                      |
| 12    | R-611305  | Strain relief, power cord                      |
| 13    | R-618201  | Bumper, black                                  |
|       | R-618201B | Bumper, gray                                   |
| 14    | R-690715  | Release pedal                                  |
|       | R-870012  | Adjustment bolt (1058Z)                        |
| 15    | R-167074  | Nozzle plug, black                             |
|       | R-701693  | Adjust-o-right plate with knob (1058Z)         |
| 16    | R-670844  | Cord clip                                      |
| 17    | R-671705  | Wheel  |
| 18    | R-672260  | Belt   |
| 19    | R-672270  | Nozzle guard, 14"                              |
| 20    | R-880314  | Handle grip, black                             |
| 21    | R-870006  | Grommet, motor                                 |
| 22    | R-870024  | Motor housing o-ring                           |
| 23    | R-870130  | Side plate                                     |
| 24    | R-871101  | Motor housing, polished (1058)                 |
|       | R-870201  | Motor housing, polished (1058Z)                |
| 25    | R-880262  | Belt lifter                                    |
| 26    | R-880304  | Strain relief, internal cord                   |
| 27    | R-670118  | Fancase assembly                               |
| 28    | R-891052  | Upper handle assembly, includes #6 and #20     |
| 29    | R-028580  | Handle fork and latch assembly                 |
| 30    | R-163309  | Switch   |
| 31    | R-891061  | Handle adaptor assembly, includes #5 and #16   |
| 32    | R-066240  | Hinged bag assembly, complete (1058)           |
|       | R-066248  | Shake out bag assembly, orange (1058)          |
|       | R-0662421 | Hinged bag assembly, complete, w/zipper orange |
| 33    | R-381309  | Nozzle assembly, includes #13                  |
| 34    | R-692225  | Brush assembly                                 |
| 35    | R-670007  | Rear wheel fork/axle assembly (1058)           |
|       | R-028574  | Rear wheel fork/axle assembly (1058Z)          |
| 36    | R-970102  | 7 amp motor w/replaceable brushes              |
| 37    | R-703236  | Short cord and lug assembly                    |
| 38    | R-060837  | Switch and plate assembly                      |
| 39    | R-608303  | Switch plate                                   |
| 40    | R-031103  | Strain relief stamping                         |
| 41    | R-601407  | Rubber inlet gasket                            |

| Index | Part No.      | Description   |
|-------|---------------|---|
| 42    | R-38901050000 | Carbon brush package, drop in motors                        |
|       | R-970109      | Carbon brush package, johnson drop in motors                |
| 55    | R-003008      | Wheel fork spring   |
| 56    | R-003009      | Rod spring  |
| 57    | R-003022      | Latch retainer screw  |
| 58    | R-003311      | Washer adaptor clamp screw                                  |
| 59    | R-003884      | Spring  |
| 60    | R-006318      | Lockwasher  |
| 61    | R-004723      | Handle fork spring  |
| 62    | R-005138      | Wheel retainer washer                                       |
| 63    | R-023309      | Screw   |
| 64    | R-074330      | Lockwasher  |
| 65    | R-110773      | Motor housing insert  |
| 66    | R-110775      | Rod adjustment sleeve (screw in)                            |
| 67    | R-133738      | Handle latch spring   |
| 68    | R-145734      | Screw   |
| 69    | R-186012      | Self tapping screw  |
| 70    | R-230713      | Carriage bolt, handle                                       |
| 71    | R-285720      | Large wingnut   |
| 72    | R-311031      | Rear axle screw   |
| 73    | R-074329      | Square neck bolt  |
| 74    | R-597743      | Screw   |
| 75    | R-601772      | Latch spacer  |
| 76    | R-606210      | Headlight spring clip                                       |
| 77    | R-670013      | Motor plate screw   |
| 78    | R-670705      | Spring pin (1018, 1025, 1030, 1038, 089000)                 |
| 79    | R-672009      | Release pedal spring (1018, 1025, 1030, 1038, 1058, 089000) |
| 80    | R-801701      | Screw   |
| 81    | R-801708      | Handle fork bolt  |
| 82    |               | Nut w/nylon insert  |
| 83    | R-801711A     | Wheel retainer cap  |
| 84    | R-801714      | Nut   |
| 85    | R-802244      | Screw   |
| 86    | R-870013      | Adjuster spring   |
| 87    | R-880707      | Screw   |
| 88    | R-884708      | Eye bolt  |
| 89    | R-980743      | Thread forming screw  |
| 90    | R-990104      | screw   |
| 91    | R-996011      | Adjuster rod  |
| 92    | R-996101      | Retaining pin   |
| 93    | R-996711      | E-ring  |
| 94    | NLA           | Screw   |
| 95    | R-130008B     | Foot adjustment lever cover                                 |