

1 **Parts to assemble:**
 2 Leg Assembly
 1 Front Panel
 2 Side Support Brace
 4 Carriage Bolt, 2"
 4 Plastic Tee Knob

A. Lay leg assemblies on their sides.
 B. Place front panel on legs.
 C. Braces attach to inside of legs.
 D. Secure with carriage bolts and tee knobs.

NOTE: To prevent scratching, lay grill on packing material to assemble.

2 **Parts to assemble:**
 1 Back Support Brace
 4 Carriage Bolt, 2"
 4 Plastic Tee Knob

A. Turn assembly upside-down.
 B. Secure back brace and side braces to legs with carriage bolts and tee knobs.

3 **Parts to assemble:**
 1 Tank Support Bracket
 2 Wheel
 2 Axle Bolt
 2 Hitch Pin
 2 Leg Extender

A. Insert axle bolts through wheels, left legs and bracket. Bracket fits inside legs.
 B. Secure with hitch pins in ends of axle bolts.
 C. Push leg extenders into right legs.

4 **Parts to assemble:**
 1 Grill Bottom Assembly
 4 Carriage Bolt, 1/4"
 4 Metal Wing Nut
 2 Control Knob

A. Stand cart upright.
 B. Make sure ignitor wire is connected to ignitor.
 C. Place grill bottom onto supports. Control panel overlaps front panel.
 D. Secure with carriage bolts and wing nuts.
 E. Press control knobs onto valves.

5 **Parts to assemble:**
 1 Vaporiser Bar
 1 Cooking Grate

A. Place vapouriser bar onto the two inner support ridges at each end of grill bottom. Bar should rest between the outer support ridges. See inset below.
 B. Place cooking grate onto grill bottom.

NOTE: Ceramic briquets are not required.

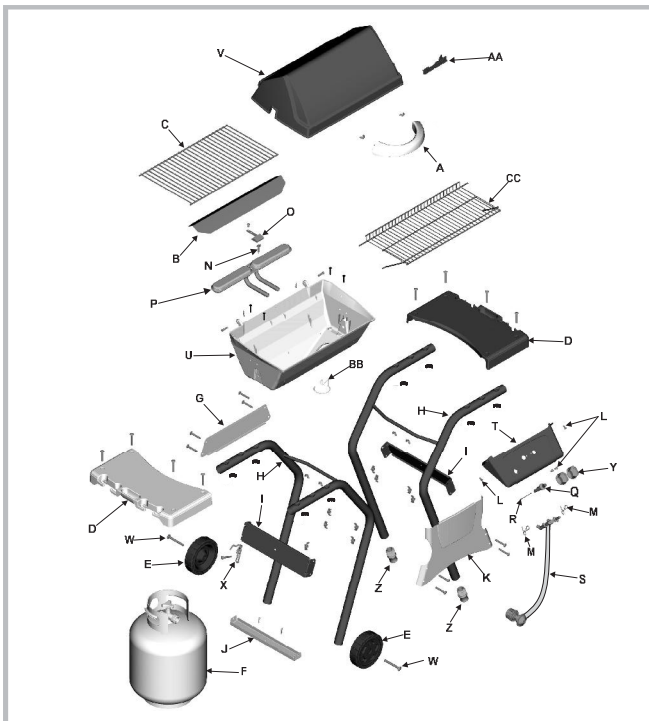
6 **Parts to assemble:**
 2 Side Shelf
 8 Carriage Bolt, 2"
 8 Plastic T Knobs

A. Place shelves onto legs (curved edge inward).
 B. Secure with carriage bolts and T knobs.

Parts List - Model 463660106

Key Qty.	Description	Part #	Key Qty.	Description	Part #
A	1 Handle	4154488	W	2 Axle Bolt	4080155
B	1 Vaporiser Bar	4151038	X	1 Tank Retainer Wire	4151018
C	1 Cooking Grate	4152738	Y	2 Control Knobs	4154470
D	2 Side Shelf	4154484	Z	2 Leg Extender	4154541
E	2 Wheel	4154569	AA	1 Logo Plate	4157147
F	1 LP Gas Tank	4158015	BB	1 Grease Clip	5156607
G	1 Back Support Brace	4500251	CC	1 SwingAway	4152866
H	2 Leg Assembly	4503118	1	Hardware Bag, Cart	4254079
I	2 Side Support Brace	4503120	2	Hardware Bag, Shelves	4254074
J	1 Tank Support Bracket	4503122			
K	1 Front Panel	4503136			
L	4 #10x1/2", T-20, Self-Tap Screw	4080043			
M	2 Valve Clip	4151043			
N	1 Electrode	5156119			
O	1 Collector Box	4500278			
P	1 Burner Assembly	4505076			
Q	1 Ignitor	4153713			
R	1 Ignitor Wire	4153196			
S	1 Valve/Hose/Regulator	4524206			
T	1 Control Panel	4526215			
U	1 Grill Bottom	4580163			
V	1 Grill Lid	4580045			

Optional Assembly Hardware
 We realize some customers prefer to use tools. Optional hex nuts have been provided for you to use.



NO TOOLS REQUIRED

Register your grill online at
WWW.GRILLREGISTRATION.COM

STOP

If you have any problems with this product,
 call 1-800-241-7548
 Open 8:00 A. M. To 6:00 P. M. EST
 Monday - Friday

Before returning this product to the store,
 We can help with damaged or missing parts,
 assembly and operation questions.

QUICKSET®

463660106
 ASSEMBLY MANUAL

**THIS GRILL IS FOR
 OUTDOOR USE ONLY**

CAUTION: Read and follow all safety statements, assembly instructions, and use and care directions before attempting to assemble and cook.

INSTALLER/ASSEMBLER: Leave these instructions with consumer.
CONSUMER: Keep this manual for future reference.

WARNING

Failure to follow all manufacturer's instructions could result in serious personal injury and/or property damage.

CAUTION

Some parts may contain sharp edges – especially as noted in the manual! Wear protective gloves if necessary.

If you have any questions or need assistance during assembly, please call 1-800-241-7548.

Visit us on the web at:
www.charbroil.com

