

1 **Parts to assemble:**
 2 Leg Assembly
 1 Front Panel
 1 Side Support Brace
 4 Carriage Bolt, 2"
 4 Plastic Tee Knob

A. Lay leg assemblies on their sides.
 B. Place front panel on legs.
 C. Braces attach to inside of legs.
 D. Secure with carriage bolts and tee knobs.
 NOTE: Leave tee knobs loose on right side.

NOTE: To prevent scratching, lay grill on packing material to assemble.

2 **Parts to assemble:**
 1 Back Support Brace
 4 Carriage Bot, 2"
 4 Plastic Tee Knob

A. Turn assembly upside-down.
 B. Secure back brace and side braces to legs with carriage bolts and tee knobs.

3 **Parts to assemble:**
 1 Tank Support Bracket
 2 Wheel
 2 Axle Bolt
 2 Hitch Pin
 2 Leg Extender

A. Insert axle bolts through wheels, left legs and bracket. Bracket fits inside legs.
 B. Secure with hitch pins in ends of axle bolts.
 C. Push leg extenders into right legs.

4 **Parts to assemble:**
 1 Grill Bottom Assembly
 4 Carriage Bolt, 1/4"
 4 Metal Wing Nut
 2 Control Knob

A. Stand cart upright.
 B. Make sure ignitor wire is connected to ignitor.
 C. Place grill bottom onto supports. Control panel overlaps front panel.
 D. Secure with carriage bolts and wing nuts.
 E. Press control knobs onto valves.

5 **Parts to assemble:**
 1 Vaporiser Bar
 1 Cooking Grate

A. Place vapouriser bar onto the two inner support ridges at each end of grill bottom. Bar should rest between the outer support ridges. See inset below.
 B. Place cooking grate onto grill bottom.

NOTE: Ceramic briquets are not required.

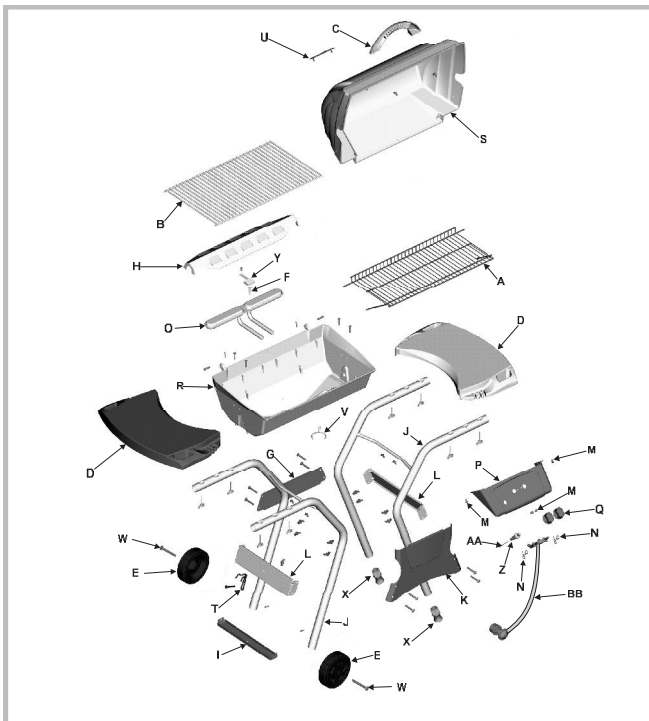
6 **Parts to assemble:**
 2 Side Shelf
 8 Wing Screw

A. Place shelves onto legs.
 B. Secure with four wing screws per shelf.

Parts List - Model 463660506

Key	Qty.	Description	Part #	Key	Qty.	Description	Part #
A	1	SwingAway	4152966	V	1	Grease Clip	5156607
B	1	Cooking Grate	4152738	W	2	Axle Bolts	4080155
C	1	Handle	4154488	X	2	Leg Extender	4154541
D	2	Side Shelf	4154543	Y	1	Collector Box	4500278
E	2	Wheel	4154569	Z	1	Ignitor	4153713
F	1	Electrode	5156119	AA	1	Ignitor Wire, 11"	4153196
G	1	Back Support Brace	4500251	BB	1	Valve/Hose/Regulator	4524206
H	1	V Bar	4151038		1	Hardware Bag, Cart	4254079
I	1	Tank Support Bracket	4502093		2	Hardware Bag, Shelves	4254050
J	2	Leg Assembly	4502376				
K	1	Front Panel	4502118				
L	2	Side Support Brace	4502373				
M	4	#10x1/2", T-20, Self-Tap Screw	4080043				
N	2	Valve Clip	4151043				
O	1	Burner Assembly	4505076				
P	1	Control Panel	4526219				
Q	2	Control Knob	4154470				
R	1	Grill Bottom	4580422				
S	1	Grill Lid	4581018				
T	1	Tank Retainer Wire	4151018				
U	1	Logo Plate	4157147				

Optional Assembly Hardware
 We realize some customers prefer to use tools. Optional hex nuts have been provided for you to use.



NO TOOLS REQUIRED

Register your grill online at
WWW.GRILLREGISTRATION.COM

STOP

If you have any problems with this product,
 call 1-800-241-7548
 Open 8:00 A. M. To 6:00 P. M. EST
 Monday - Friday

Before returning this product to the store,
 We can help with damaged or missing parts,
 assembly and operation questions.

QUICKSET®

463660506
 ASSEMBLY MANUAL

THIS GRILL IS FOR
 OUTDOOR USE ONLY

CAUTION: Read and follow all safety statements, assembly instructions, and use and care directions before attempting to assemble and cook.

INSTALLER/ASSEMBLER: Leave these instructions with consumer.
CONSUMER: Keep this manual for future reference.

WARNING

Failure to follow all manufacturer's instructions could result in serious personal injury and/or property damage.

CAUTION

Some parts may contain sharp edges – especially as noted in the manual! Wear protective gloves if necessary!

If you have any questions or need assistance during assembly, please call 1-800-241-7548.

Visit us on the web at:
www.charbroil.com

