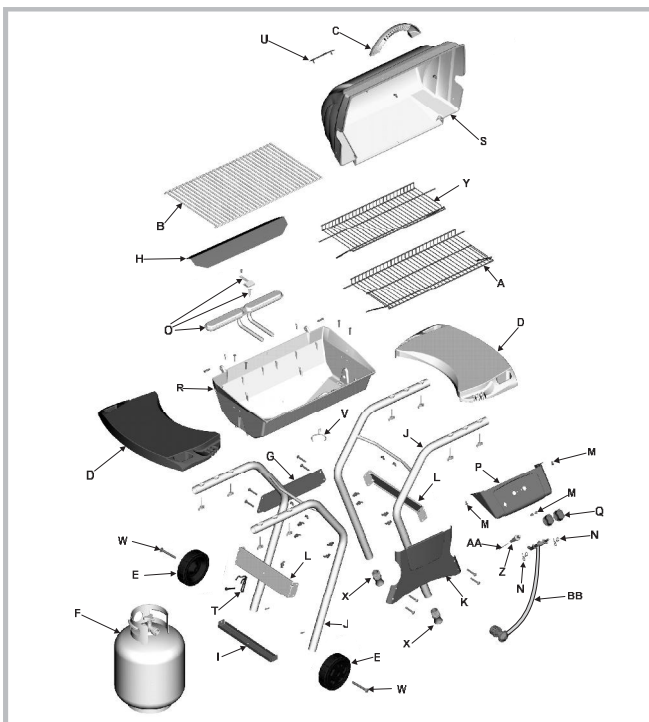


## Parts List - Model 463660806

| Key | Qty. | Description                    | Part #  | Key | Qty. | Description           | Part #  |
|-----|------|--------------------------------|---------|-----|------|-----------------------|---------|
| A   | 1    | SwingAway, Bottom              | 4152966 | V   | 1    | Grease Clip           | 5156607 |
| B   | 1    | Cooking Grate                  | 4152738 | W   | 2    | Axle Bolts            | 4080155 |
| C   | 1    | Handle                         | 4154488 | X   | 2    | Leg Extender          | 4154541 |
| D   | 2    | Side Shelf                     | 4154543 | Y   | 1    | SwingAway, Top        | 4152865 |
| E   | 2    | Wheel                          | 4154569 | Z   | 1    | Ignitor               | 4153713 |
| F   | 1    | LP Tank                        | 4158015 | AA  | 1    | Ignitor Wire, 11"     | 4153196 |
| G   | 1    | Back Support Brace             | 4500251 | BB  | 1    | Valve/Hose/Regulator  | 4524206 |
| H   | 1    | V Bar                          | 4151038 |     | 1    | Hardware Bag, Cart    | 4254079 |
| I   | 1    | Tank Support Bracket           | 4502093 |     | 2    | Hardware Bag, Shelves | 4254050 |
| J   | 2    | Leg Assembly                   | 4502376 |     |      |                       |         |
| K   | 1    | Front Panel                    | 4502118 |     |      |                       |         |
| L   | 2    | Side Support Brace             | 4502373 |     |      |                       |         |
| M   | 4    | #10x1/2", T-20, Self-Tap Screw | 4080043 |     |      |                       |         |
| N   | 2    | Valve Clip                     | 4151043 |     |      |                       |         |
| O   | 1    | Burner Assembly                | 4505081 |     |      |                       |         |
| P   | 1    | Control Panel                  | 4526219 |     |      |                       |         |
| Q   | 2    | Control Knob                   | 4154470 |     |      |                       |         |
| R   | 1    | Grill Bottom                   | 4580422 |     |      |                       |         |
| S   | 1    | Grill Lid                      | 4581018 |     |      |                       |         |
| T   | 1    | Tank Retainer Wire             | 4151018 |     |      |                       |         |
| U   | 1    | Logo Plate                     | 4151747 |     |      |                       |         |

### Optional Assembly Hardware

We realize some customers prefer to use tools. Optional hex nuts have been provided for you to use.



# NO TOOLS REQUIRED

Register your grill online at  
[WWW.GRILLREGISTRATION.COM](http://WWW.GRILLREGISTRATION.COM)

## STOP

If you have any problems with this product,  
call 1-800-241-7548  
Open 8:00 A. M. To 6:00 P. M. EST  
Monday - Friday

Before returning this product to the store,  
We can help with damaged or missing parts,  
assembly and operation questions.

## QUICKSET®

463660806  
ASSEMBLY MANUAL

THIS GRILL IS FOR  
OUTDOOR USE ONLY

**CAUTION:** Read and follow all safety statements, assembly instructions, and use and care directions before attempting to assemble and cook.

**INSTALLER/ASSEMBLER:** Leave these instructions with consumer.  
**CONSUMER:** Keep this manual for future reference.

### WARNING

Failure to follow all manufacturer's instructions could result in serious personal injury and/or property damage.

### CAUTION

Some parts may contain sharp edges – especially as noted in the manual! Wear protective gloves if necessary. If you have any questions or need assistance during assembly, please call 1-800-241-7548.

Visit us on the web at:  
[www.charbroil.com](http://www.charbroil.com)

**Char-Broil**  
KEEPERS OF THE FLAME  
COLUMBUS, GA