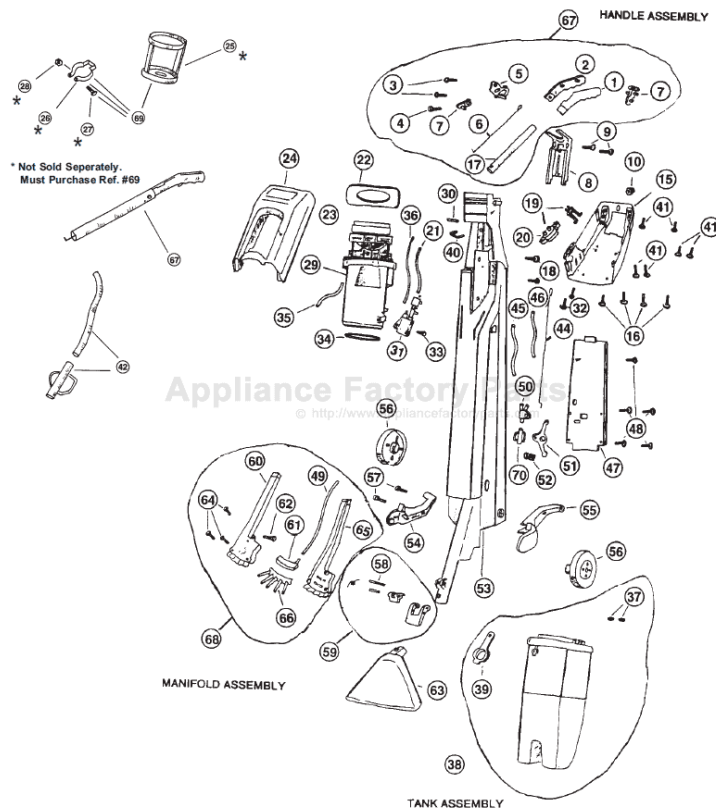


This Owner's Manual is provided and hosted by [Appliance Factory Parts](http://ApplianceFactoryParts.com).



# Regina S176 Owner's Manual

[Shop genuine replacement parts for Regina S176](#)



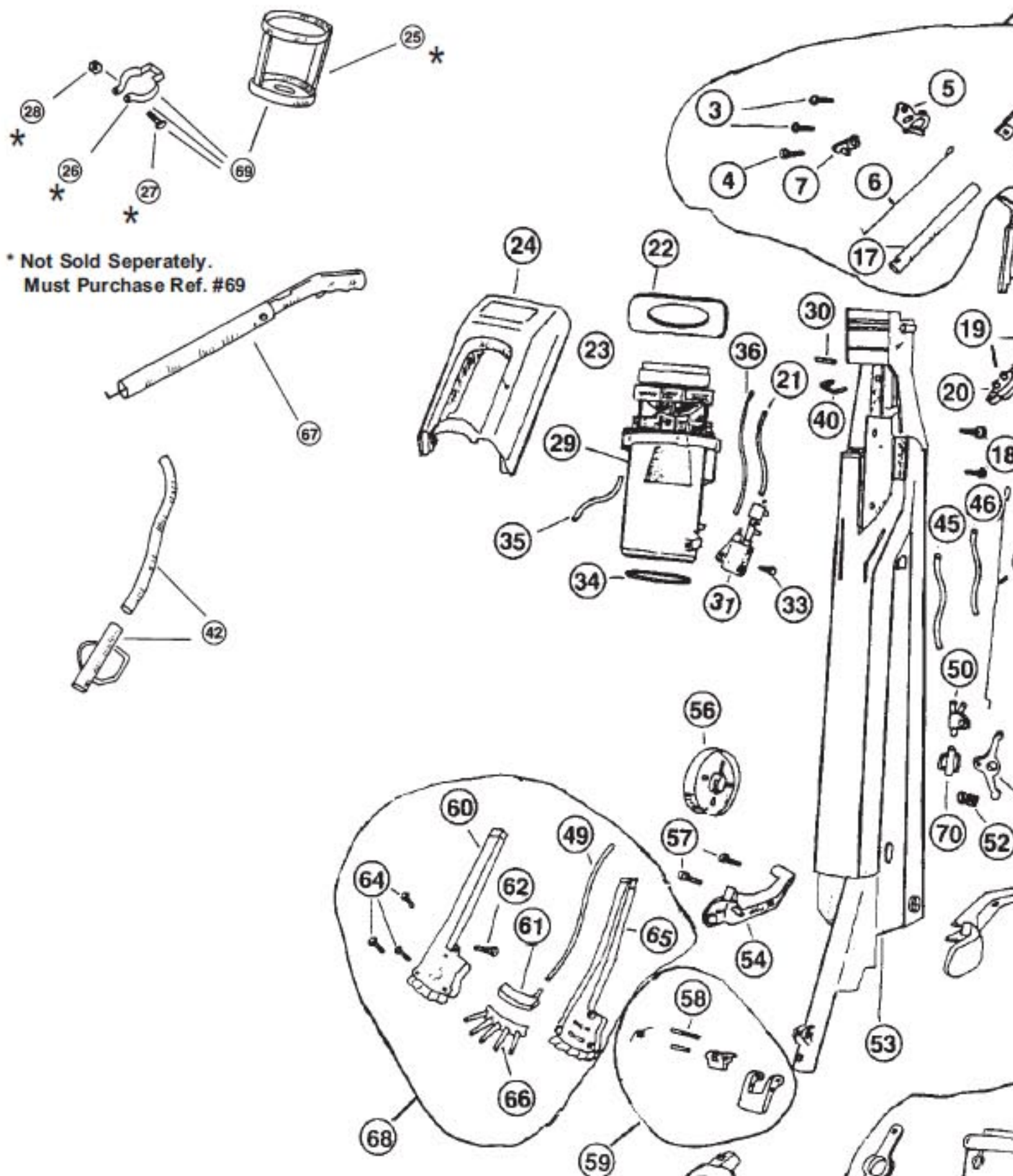
[Find Your Regina Vacuum Cleaner Parts - Select From 111 Models](#)

----- Manual continues below -----

# REGINA

Models: S166, S176, S278, S300, ES166, ES278, ES300

## Regina Steamer pre 7/15/91 production



# REGINA

Models: S166, S176, S278, S300, ES166, ES278, ES300

## Regina Steamer pre 7/15/91 production

1	RG-52053P3CR	Grip, handle, right	35	RG-52024P2	Tube, sep. / b
2	N/A	Grip, handle, left, ES166, E166	36	RG-52024P3	Tube, sep. / s
2	RG-52052P6CR	Grip, handle, left, ES278, ES300, S176, S278, S300	37	RG-5267701	Seal, port
3	RG-03729	Screw	38	RG-95220065	Reservoir Ass
4	RG-03729	Screw	38	RG-952200G4	Reservoir Ass
5	RG-52055P1BR	Trigger, dispenser, S166, S278	38	RG-952200G5	Reservoir Ass
5	RG-52055P1AA	Trigger, dispensing, ES166, ES278, ES300, S176, S300	39	RG-52045P1AQ	Cap, fill
6	RG-52076P3	Wire, upper control	40	RG-52111P1	Gasket, body
7	RG-52056P4BR	Button, spotter	41	N/A	Screw
8	RG-52023P1BS	Clamp, handle, S166, S278, S300	42	N/A	Tube, pinch k
8	RG-52023P1CR	Clamp, handle, ES166, ES278, ES300, S176	44	RG-5267601	Wire, lower c
9	RG-030047601	Screw	45	RG-52003P1	Tube, "Y" cor
10	N/A	Knob, switch, S166, S278	46	RG-52024P1	Tube, "Y" cor
10	N/A	Knob, switch, ES166, ES278, ES300, S176, S300	47	RG-52019P1CR	Cover, frame
	RG-52047P3	Switch, ES166, S166, S176	48	N/A	Screw
	RG-52047P4	Switch, ES278, S278	49	RG-52024P6	Tube, spray h
	RG-52047P6	Switch, ES300, S300	50	RG-5200	Hose Connect
	RG-030043401	Screw	50	RG-52001P1CR	Hose Connect
	SS-34	Strain Relief, sold ea (R)	51	RG-52000P2AA	Arm, flow con
14	N/A	Line Cord, all except S176	52	RG-52002P1	Spring, flow a
14	N/A	Line Cord, S176	53	RG-952286G3	Air Duct Cove
15	N/A	Housing, rear, S166, S300	54	RG-52086P1CR	Strut, right wh
15	RG-52018P1CR	Housing, rear, ES166, ES278, ES300, S176	55	RG-52059P1CR	Strut, left whe
15	RG-52018P1BR	Housing, rear, S278	56	RG-52060P2AA	Wheel
16	RG-030039215	Screw	57	RG-03733	Screw
17	RG-52282P1BS	Tube Handle, S166, S278, S300	58	RG-52033P2	Pin, latch
17	RG-52282P1AA	Tube Handle, ES166, ES278, ES300, S176	59	RG-952072G1	Lever Assy, la
18	RG-030047601	Screw	59	RG-952072G2	Lever Assy, la
19	RG-952109G1	Bottle Docking Assembly	60	RG-52034P1CR	Manifold, air (
20	RG-095310601	Bottle Docking	61	RG-52036P1AQ	Duct, water
21	RG-52024P4	Tube, ell ftg / bottle docking	62	RG-03749	Screw
22	RG-52130P1	Baffle, cooling air	63	RG-952027G3	Nozzle Assy
23	RG-52167P1AQ	Cap, bypass	64	RG-03729	Screw
24	N/A	Housing, front, S166	65	RG-52035P1CR	Manifold, air (
24	RG-52108P1CM	Housing, front, ES166, ES278, ES300, S176, S300	66	RG-52037P1AQ	Manifold, wat
24	RG-52017P1BR	Housing, front, S278	67	RG-952282G8	Handle Asser
29	RG-095836701	Motor & Separator Assy, ES166, ES278, S166, S176, S278	68	RG-952034G2	Manifold Asser
29	RG-952008G11	Motor & Separator Assy, ES300, S300	69	RG-909049	Prep Caddy P
30	RG-52229P1	Gasket, body / frame	70	RG-52196P1	Pinch Tube
31	RG-952004G2	Block, supply & fitting assy	71	RG-952212G1	Nozzle Brush
32	RG-030039215	Screw			
33	RG-03728	Screw			
34	RG-52041P1	Seal Separator			