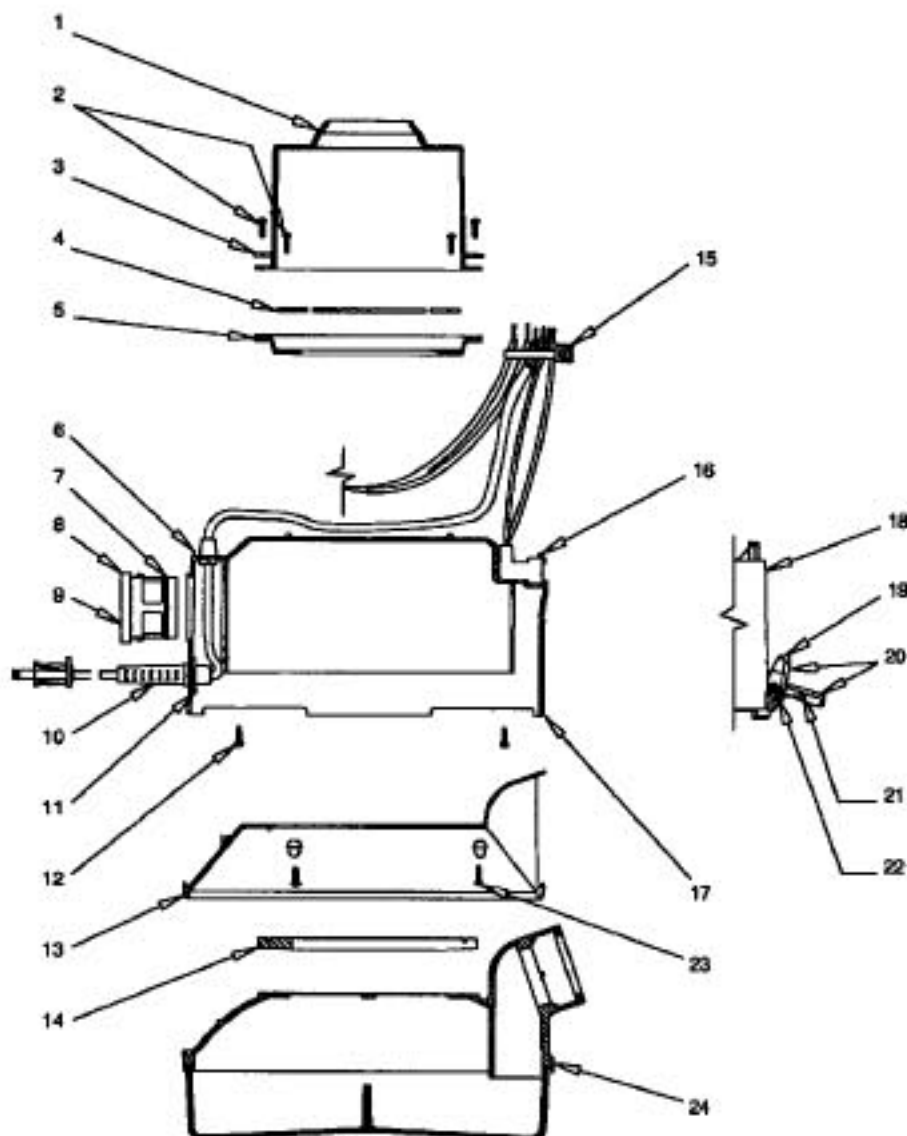


CAP AND CAP COVER ASSEMBLY

- | | |
|----------------|---|
| RX-R3240 | Cap & Cap Cover Assy, 4-hole top & bottom |
| RX-R3584 | Cap & Cap Cover Assy, w/o baffle |
| 1.....RX-R2721 | Handle Applique Top |
| 2.....RX-R3160 | Cap Cover Assy, includes handle pad, handle applique (top and side) |
| 3.....RX-R2584 | Handle Pad |
| 4.....RX-R4369 | Cap Assy, includes cap applique |
| 5.....RX-H515 | Screw, plastic |
| 6.....RX-R3127 | Switch, snap-in |
| | RX-R2728 Switch, prior to S.N. 6171010 |
| 7.....RX-R2722 | Handle Applique, side |
| 8.....RX-R5403 | Cap Applique, fits all models |
| 8.....RX-R2592 | Cap Applique, for caps made before 6/93 |
| 9.....RX-R4373 | Outer Baffle Assembly |

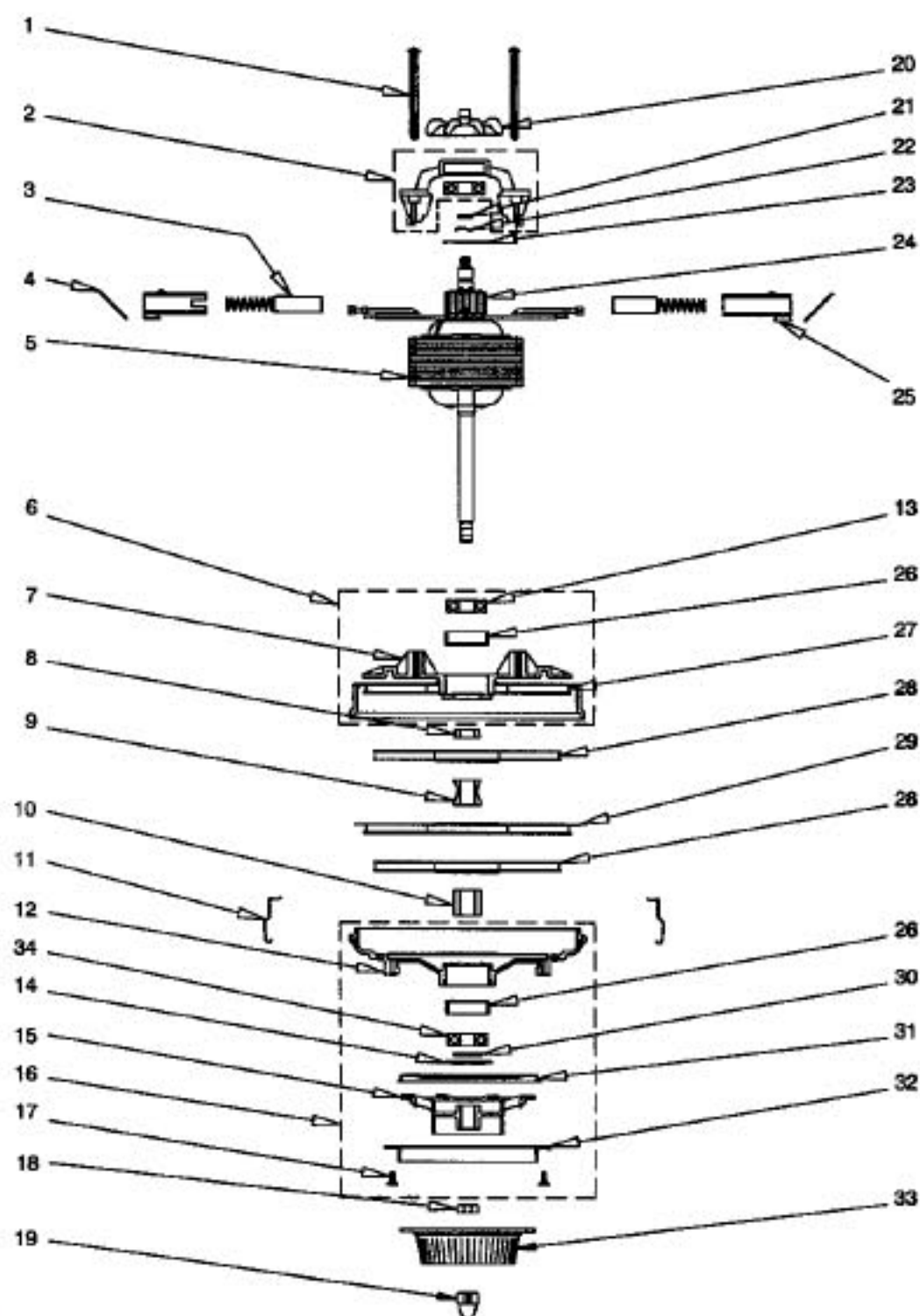


MAIN HOUSING AND WATERPAN ASSEMBLY

- | | |
|-----------------|--|
| 1.....RX-R2582 | Motor Shroud |
| 2.....RX-H556 | Screw, plastic |
| 3.....RX-R2172 | Clamp Ring Segment |
| 4.....RX-R2585 | Clamp Ring Segment |
| 5.....RX-R2701 | Motor Support Ring |
| 6.....RX-R2607 | Strain Relief Clip |
| 7.....RX-R4148 | "O" Ring, for closure cover |
| 8.....RX-R3845 | Closure Cover, w/ applique & "O" ring |
| 8.....RX-R2708 | Closure Cover Assy, prior to S.N. 6878827 |
| | RX-R2706 Latch Assy, for for RX-R2708 |
| 9.....RX-R2772 | Applique, closure cover |
| 10.....RX-R4052 | Cord, s/n 0000001-7000000 |
| 11.....RX-R2605 | Strain Relief Support |
| 12.....RX-H515 | Screw, main housing to cap |
| 13.....RX-R5080 | Baffle Plate Assy |
| 14.....RX-R2702 | Motor Gasket |
| 15.....RX-R2380 | Cable Tie |
| 16.....RX-R3184 | Power Nozzle Receptacle |
| 17.....N/A | Main Housing Sub-Assembly |
| 18.....RX-R4201 | Applique, main housing |
| 18.....RX-R2586 | Applique, main housing, glossy |
| 19.....RX-R6178 | Latch Only, w/o applique, after & including S.N. 8000000 |
| 19.....RX-R3833 | Latch Assy, w/ applique, up to S.N. 8000000 |
| 20.....RX-R4203 | Applique, latch, up to S.N. 8000000 |
| 21.....RX-R2654 | Latch Spring |
| 22.....RX-R1566 | Latch Pin |
| 23.....RX-H491 | Screw, plastic |
| 24.....RX-R6854 | Water Pan Assy |

MOTOR ASSEMBLY

| | | |
|-----|----------|---|
| | RX-R3242 | Motor Assy |
| 1 | RX-H545 | Screw, plastic |
| 2 | RX-R2677 | Bearing Bridge Assy |
| 3* | RX-R5125 | Carbon Brush |
| 3 | RX-R2421 | Carbon Brush, up to S.N. 7520714 |
| 4 | RX-R2703 | Brush Holder Clip |
| 5 | RX-R3159 | Field Assy |
| 6 | RX-R2773 | Motor Base & Bearing Assy |
| 7 | RX-R2636 | Motor Base Assy |
| 8 | RX-R2680 | Fan Spacer, top |
| 9 | RX-R2681 | Fan Spacer, middle |
| 10 | RX-R2679 | Fan Spacer, lower |
| 11 | RX-R2682 | Stage Housing Clip |
| 12 | RX-R2774 | Lower Housing & Inner Baffle Plate Assy |
| 13 | RX-R1981 | Ball Bearing |
| 14 | RX-R2630 | Bearing Retainer Shield |
| 15 | RX-R4101 | Spider |
| 16 | RX-R4612 | Lower Housing Assy |
| 17 | RX-H542 | Screw |
| 18 | RX-H426 | Nut, armature shaft |
| 19 | RX-H555 | Separator Nut, flat |
| 20 | RX-R3277 | Fan, motor |
| 21 | RX-R2936 | "O" Ring |
| 22 | RX-R2525 | Wave Washer |
| 23 | RX-R2946 | Insulator Washer |
| 24* | RX-R5319 | Armature Assy |
| 25* | RX-R5124 | Brush Holder |
| 25 | RX-R2700 | Brush Holder, up to S.N. 7520714 |
| 26 | RX-R1987 | Bearing Boot |
| 27 | RX-R2613 | Upper Stage Assy |
| 28 | RX-R2609 | Fan Assy |
| 29 | RX-R2617 | Lower Stage Assy |
| 30 | RX-R1979 | Slinger Ring |
| 31 | RX-R2698 | Outer Baffle Plate |
| 32 | RX-R747 | Motor Gasket Flange |
| 33 | RX-R4100 | Separator |
| 34 | RX-R5238 | Ball Bearing |



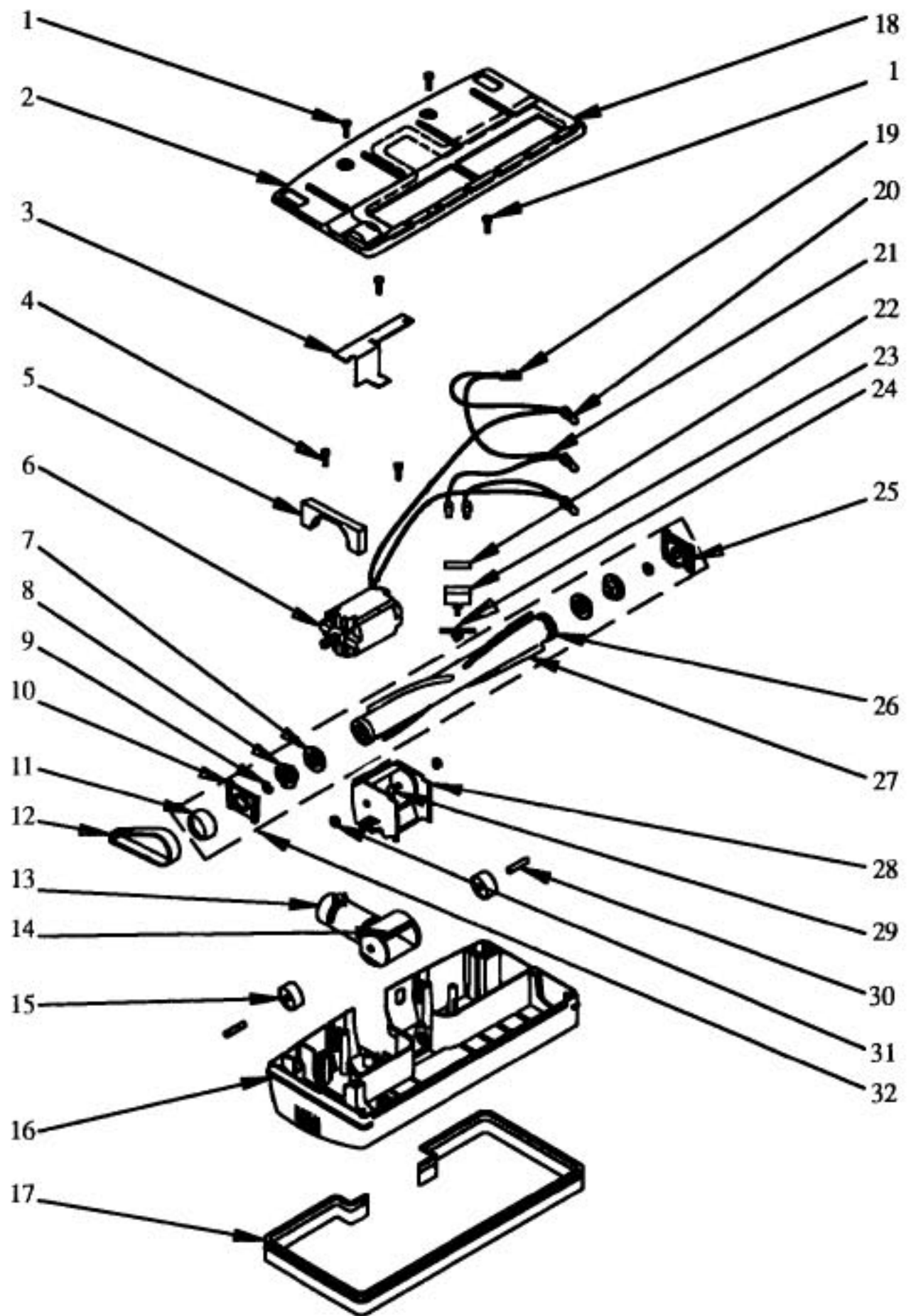
* Effective 3/29/93, RX-R2598 Armature is obsolete and is replaced by RX-R5319 Armature. RX-R5124 Tall Brush Holder and RX-R5125 Tall Carbon Brushes are not to be used with RX-R2598 Armature. RX-R2677 Bearing Bridge Assy produced after 9/92 will accept RX-R5124 Tall Brush Holders and RX-R5125 Tall Carbon Brushes.

ATTACHMENTS / OPTIONAL EQUIPMENT

| | |
|-----------|------------------------------------|
| RX-R933 | Straight Wand |
| RX-R2807 | Curved Wand |
| RX-R2792 | Suction Control Sleeve |
| RX-R934 | Bottom Wand |
| RX-R4530 | Floor Tool Assembly |
| RX-R4659 | Body w/ Logo Only, floor tool |
| RX-R2540 | Bristles, floor tool |
| RX-R2816 | Guard, floor tool |
| RX-R2556 | Crevice Tool |
| RX-R12439 | Dusting Brush Assy |
| RX-R192 | Bristles, dusting brush |
| RX-R3076 | Body w/ Logo Only, dusting brush |
| RX-R2535 | Upholstery Tool Assy |
| RX-R2537 | Brush, upholstery tool |
| RX-R3079 | Body w/ Logo Only, upholstery tool |
| N/A | Rainbow Logo |

| | |
|----------|---------------------------------------|
| RX-R4142 | Coil Cleaner |
| RX-R3358 | Inflator Tool Assy |
| RX-R2709 | Attachment Caddy |
| RX-R3816 | Pin, caddy swivel arm |
| RX-H564 | Spring, caddy swivel arm |
| RX-H565 | E-Ring, caddy swivel arm |
| RX-R2785 | Hose, w/ molded tip, all except D4CSE |
| RX-R2784 | Hose Coupling Assy |
| RX-R579 | Hose Tip Only |
| RX-R841 | Separator Brush |
| RX-R2811 | Dolly, w/o casters |
| RX-R2812 | Caster, sold each |
| RX-R3055 | Applique, dolly, glossy |
| N/A | Applique, dolly, satin |

POWER NOZZLE Model: R-2800C

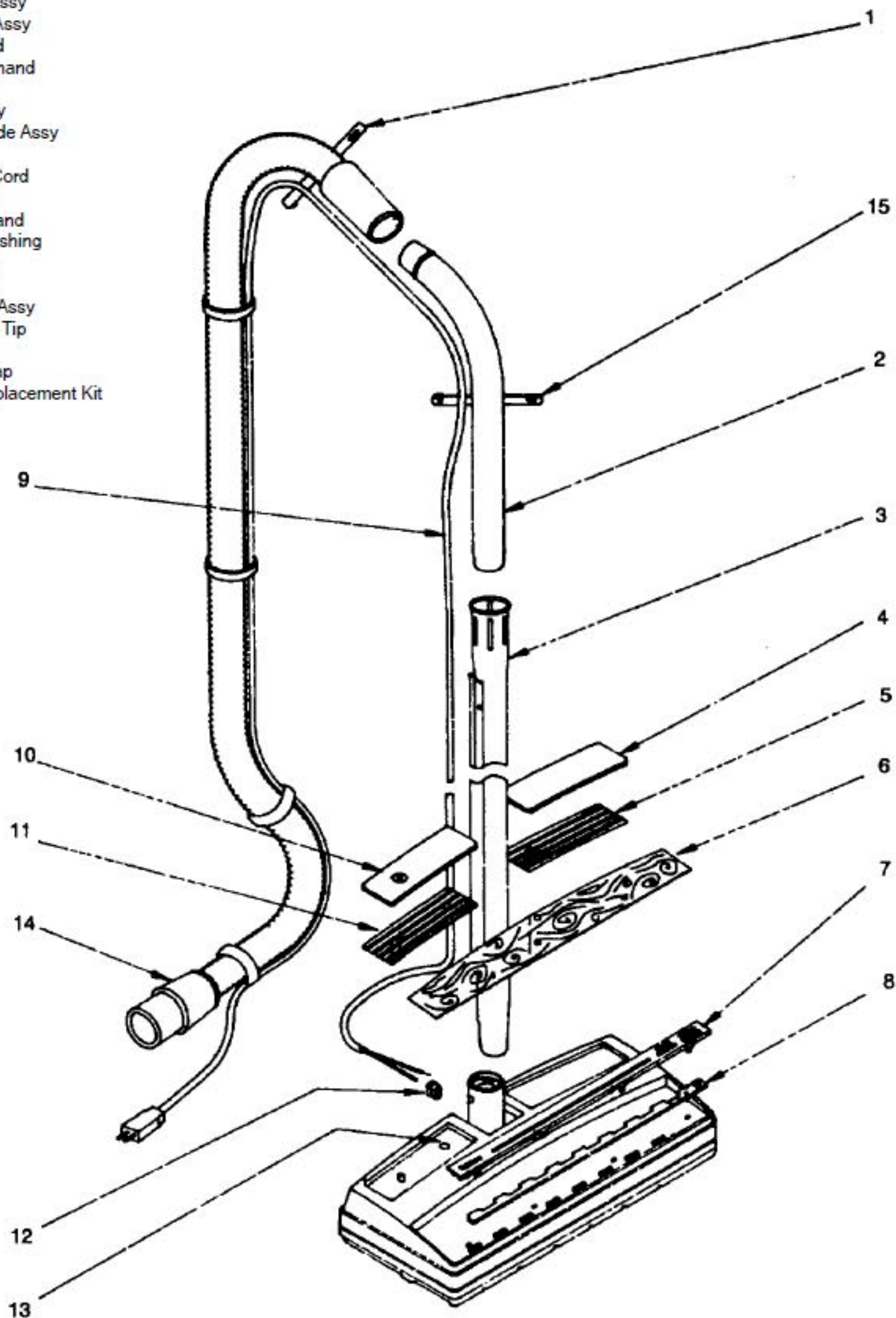


- | | | |
|----|----------|--------------------------------|
| 1 | RX-H515 | Screw |
| 2 | RX-R2004 | Bottom Plate Assy |
| 3 | RX-R1997 | Insulator |
| 4 | RX-H552 | Screw |
| 5 | RX-R1813 | Air Barrier |
| 6 | RX-R1871 | Motor Assy |
| | RX-R4662 | Carbon Brush, p/n motor |
| | RX-R4663 | Rear Bearing, p/n motor |
| | RX-R3550 | Sleeve Assy, p/n motor |
| 7 | RX-R1692 | Seal, brush assy |
| 8 | RX-R1691 | Keeper, brush assy |
| 9 | RX-R1698 | Thrust Washer |
| 10 | RX-R2443 | End Cap |
| 11 | RX-R3472 | Power Nozzle Pulley Assy |
| 12 | RX-R1699 | Belt, sold each |
| 13 | RX-R2801 | Pivot Arm Assy |
| | RX-R3300 | Pivot Arm & Housing Assy |
| 14 | RX-R2069 | Felt Pad |
| 15 | RX-R1703 | Wheel, p/n |
| 16 | N/A | Main Housing Assy |
| 17 | RX-R2795 | Bumper |
| 18 | RX-R2003 | Gasket, bottom plate |
| 19 | RX-R1818 | Pilot Light Assy |
| 20 | RX-R1775 | Closed End Splice |
| 21 | RX-R1754 | Lead Assy |
| 22 | RX-R1780 | Insulator, circuit breaker |
| 23 | RX-R4291 | Circuit Breaker, 2 amp |
| 24 | RX-R4290 | Adaptor Plate, curcuit breaker |
| 25 | RX-R1744 | Bearing Assy |
| 26 | RX-R1690 | Brush Roll Only |
| 27 | RX-R1695 | Beater Bar |
| 28 | RX-R2803 | Pivot Housing |
| 29 | RX-R1996 | Clevis Pin |
| 30 | RX-R1704 | Wheel Pins, p/n |
| 31 | RX-H527 | "E" Ring |
| 32 | RX-R1866 | Brush Roll Assy, complete |

POWER NOZZLE

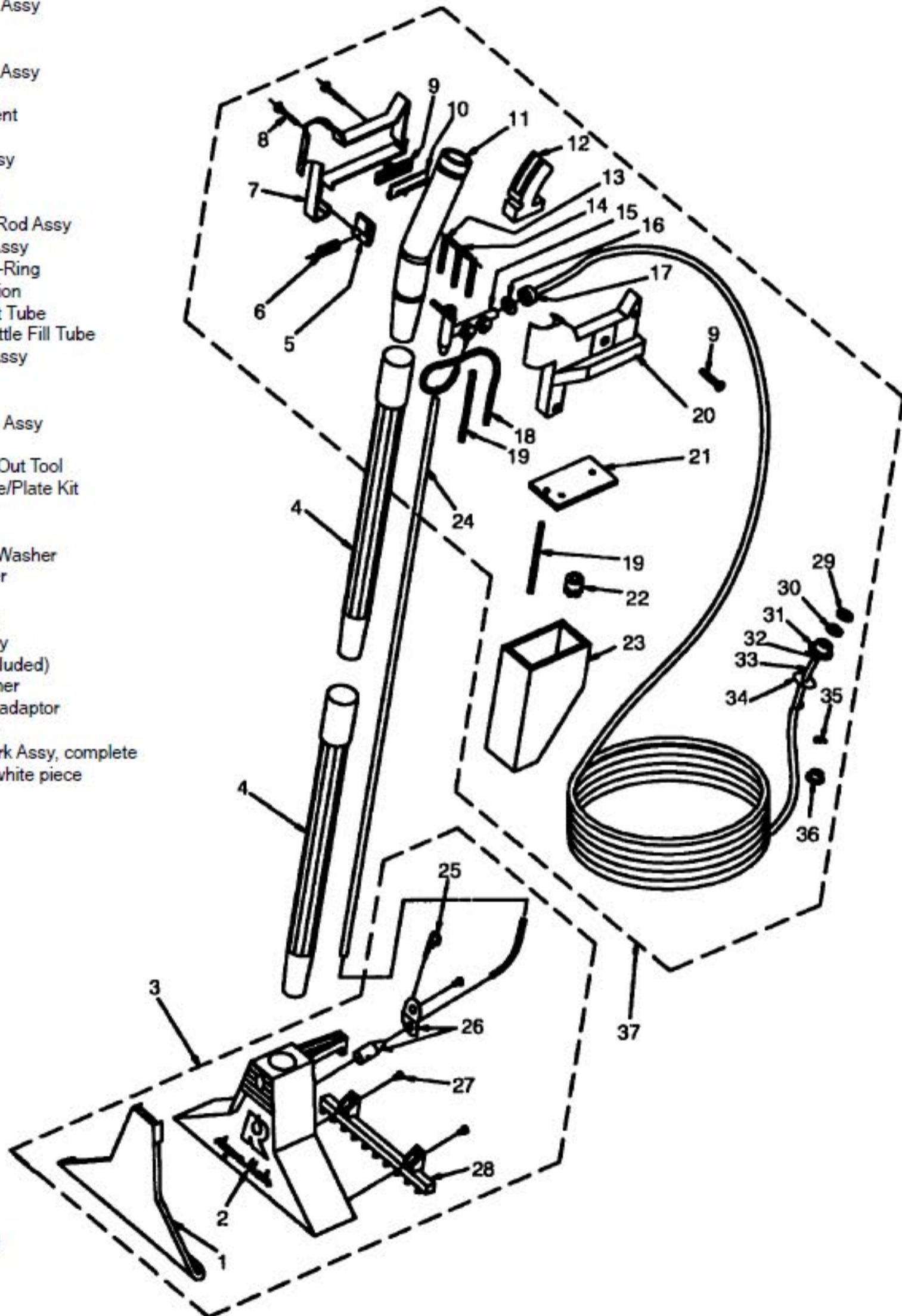
Model: R-2800C

- | | | |
|----|----------|----------------------------|
| 1 | RX-R1045 | Hose Cord Strap |
| 2 | RX-R1999 | Curved Wand Assy |
| 3 | RX-R5066 | Straight Wand Assy |
| 4 | RX-R2789 | Lens, right-hand |
| 5 | N/A | Applique, right-hand |
| 6 | N/A | Applique, satin |
| 6 | RX-R2793 | Applique, glossy |
| 7 | RX-R2775 | Slide Valve Guide Assy |
| 8 | RX-R1990 | Slide Valve |
| 9 | RX-R2496 | Power Nozzle Cord |
| 10 | RX-R2685 | Lens, left-hand |
| 11 | RX-R2797 | Applique, left-hand |
| 12 | RX-R4053 | Strain Relief Bushing |
| 13 | RX-R1863 | Pilot Light Lens |
| 14 | RX-R6621 | Hose Assembly |
| | RX-R2784 | Hose Coupling Assy |
| | RX-R4718 | Hose & Molded Tip |
| | RX-R579 | Molded Tip |
| 15 | RX-R1045 | Wand Cord Strap |
| | RX-R3520 | Cord Guide Replacement Kit |



AQUAMATE

- | | | | |
|---------|----------|-------|--------------------------------|
| 1..... | RX-R2269 | | Front Plate |
| 2..... | RX-R3581 | | Aquamate Head Decal |
| 3..... | N/A | | Extraction Head Assy, complete |
| 4..... | RX-R2846 | | Straight Wand Assy |
| 5..... | RX-R2322 | | Bottle Latch |
| 6..... | RX-R2321 | | Latch Spring |
| 7..... | RX-R4621 | | Right Housing Assy |
| 8..... | RX-H537 | | Screw |
| 9..... | RX-R2326 | | Slide Adjustment |
| 10..... | RX-R2318 | | Pinch Arm |
| 11..... | RX-R2849 | | Bent Wand Assy |
| 12..... | RX-R2340 | | Trigger |
| 13..... | RX-R6977 | | Trigger Spring |
| 14..... | RX-R2571 | | Valve Cpntrl Rod Assy |
| 15..... | RX-R2400 | | Fluid Control Assy |
| 16..... | RX-R2401 | | Hose Conn. O-Ring |
| 17..... | RX-R2402 | | Hose Connection |
| 18..... | RX-R2602 | | Detergent Inlet Tube |
| 19..... | RX-R2483 | | Overflow & Bottle Fill Tube |
| 20..... | RX-R4622 | | Left Housing Assy |
| 21..... | RX-R2317 | | Foam Gasket |
| 22..... | RX-R7351 | | Flow Control |
| 23..... | N/A | | Solution Bottle Assy |
| 24..... | RX-R2026 | | 40" tube |
| 25..... | N/A | | Nozzle Clean-Out Tool |
| 26..... | RX-R2260 | | Sprayer Nozzle/Plate Kit |
| 27..... | RX-H491 | | Screw |
| 28..... | RX-R2262 | | Brush Assy |
| 29..... | RX-R2080 | | Long Adaptor Washer |
| 30..... | RX-R7356 | | Screen Washer |
| 31..... | RX-R6138 | | Stem Nut |
| 32..... | RX-R2040 | | Tubing Clamp |
| 33..... | RX-R4651 | | 50 ft Hose Assy |
| 33..... | RX-R4619 | | 50 ft Hose (included) |
| 34..... | RX-R2065 | | Anti-Drip Washer |
| 35..... | RX-R2079 | | Washer, short adaptor |
| 36..... | RX-R2045 | | Adaptor, short |
| 37..... | RX-R4617 | | Control Network Assy, complete |
| | RX-R2042 | | Swivel Stem, white piece |



RX-R5426
Stainless Steel Wands, 2 used