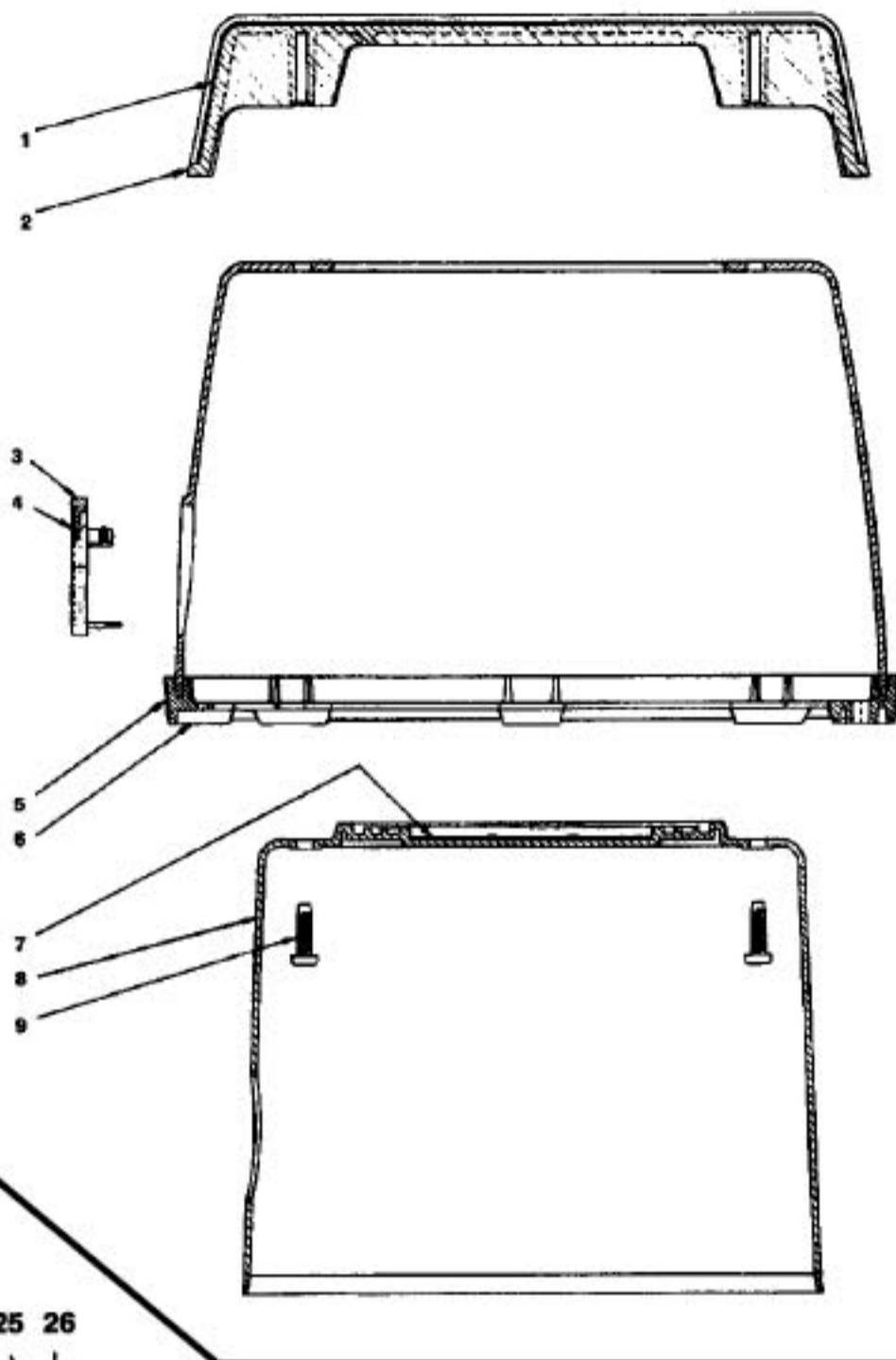


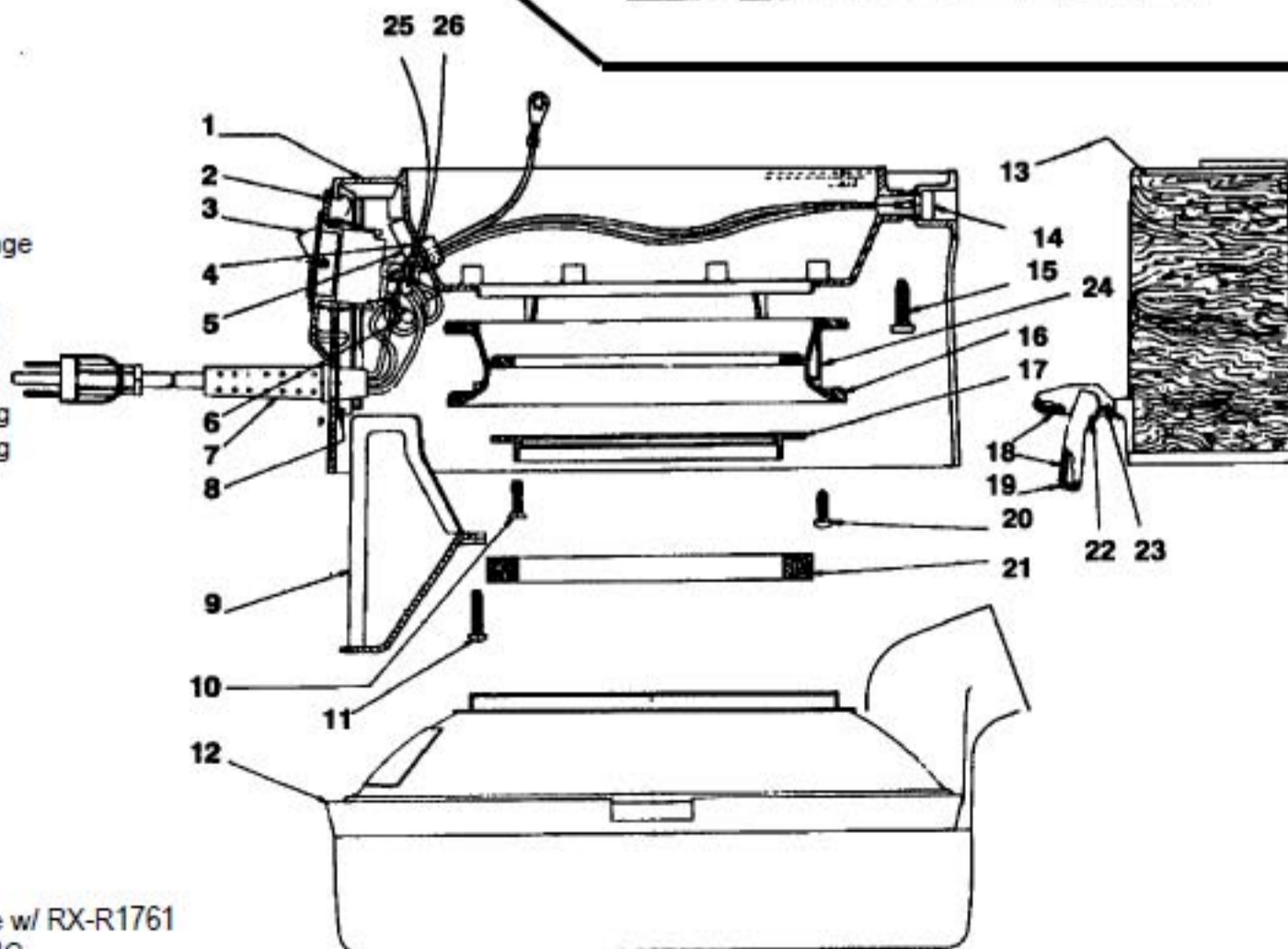
### CAP AND CAP COVER ASSEMBLY

	RX-R1530	Cap & Baffle Assembly
1	RX-R1567	Decal, handle
2	RX-R1574	Handle Assy
3	RX-R1652	Closure Cover Assy
4	RX-R1569	Closure Cover Decal
5	RX-R1568	Cap Ring Decal
6	RX-R1822	Cap & Cap Ring Assy
7	RX-R1570	Rainbow - Baffle Decal
8	RX-R1573	Baffle Assy
9	RX-H489	Screw, cap handle
	RX-H519	Rivet, closure cord to cap ring (blower cord to top housing)



### MAIN HOUSING AND WATERPAN ASSEMBLY

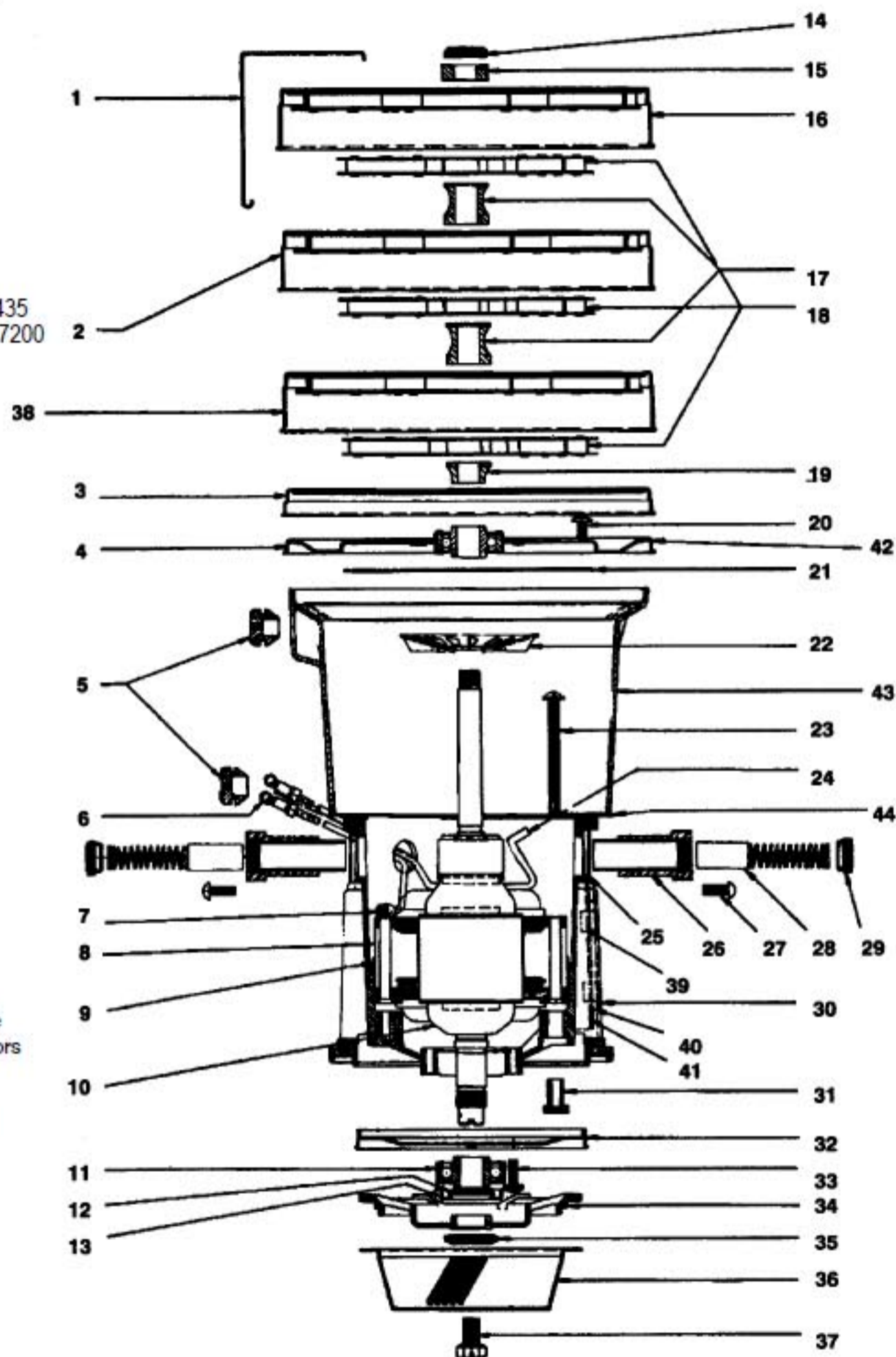
2	RX-R1644	Switch Bracket
3	RX-R1645	Switch, snap-in
4	RX-R1158	Open/Closed Bushing
5	RX-R1734	Insulation Boot, switch
6	RX-R1642	Terminal
7	RX-R1753	Cord, 3 wire, w/ plug
8	RX-R1528	Strain Relief Support
9	RX-R1526	Switch Cover
10	RX-H378	Screw, motor gasket flange
11	RX-H492	Screw, switch cover
12	RX-R1556	Water Pan Assy, 2 quart
12	RX-R1743	Water Pan Assy, 4 quart
13	RX-R1572	Applique, main housing
14	RX-R1582	Receptacle Assy, 2 prong
14	RX-R1761	Receptacle Assy, 3 prong
15	RX-H489	Screw, cap to housing
16	RX-R599	Motor Support Ring
17	RX-R747	Motor Gasket Flange
18	N/A	Applique, latch
19	RX-R3833	Latch Assy, w/ applique
20	RX-H491	Screw, clamp ring
21	RX-R912	Gasket, motor
22	RX-R1585	Spring, latch
23	RX-R1566	Pin, latch
24	RX-R598	Outer Clamp Ring
25	RX-H511	Screw, switch terminal
26	RX-R1642	Terminal, cord
	RX-R1225	Eyelet Terminal
	RX-H519	Pop Rivet, D3A only, use w/ RX-R1761
	RX-R1518	Dolly Assy, complete, D3C



## MOTOR ASSEMBLY

Model: R-1767, beginning serial number 4388126,  
6/30/80, replaced by R-2104

- |         |          |   |
|---------|----------|---|
| 1.....  | RX-R1423 | Stage Housing Clip  |
| 2.....  | RX-R1419 | Stage Assembly  |
| 3.....  | RX-R1418 | Air Guide   |
| 4.....  | RX-R1411 | Bearing Plate Assy  |
| 5.....  | RX-R665  | Grommet   |
| 6.....  | RX-R1853 | Terminal, insulated   |
| 7.....  | RX-H487  | Cable Clamp   |
| 8.....  | RX-R1435 | Field Assy, revised, up to<br>S.N. 4545550  |
| 8.....  | RX-R2424 | Field Assy  |
| 9.....  | RX-R1454 | Field Insulator   |
| 10*     | RX-R1426 | Armature Assy, use w/ RX-R1435  |
| 10..... | RX-R1909 | Armature Assy, up to S.N. 4607200   |
| 11..... | NLA      | Lower Bearing   |
| 12..... | RX-R147  | Slinger Ring  |
| 13..... | RX-R146  | Bearing Shield  |
| 14..... | RX-H306  | Shaft Nut   |
| 15..... | RX-R1486 | Spacer  |
| 16..... | RX-R1421 | Stage Assy, upper   |
| 17..... | N/A      | Fan Spacer, middle  |
| 18..... | RX-R675  | Fan Assembly  |
| 19..... | RX-R1416 | Fan Spacer, lower   |
| 20..... | RX-H475  | Screw, bearing plate  |
| 21..... | RX-R1415 | Gasket, bearing plate   |
| 22..... | RX-R1469 | Cooling Fan, armature   |
| 23..... | RX-H535  | Screw, field  |
| 24..... | RX-R1578 | Terminal, brush (flag)  |
| 24..... | RX-R2423 | Terminal, brush (eyelet)  |
| 25..... | RX-R1455 | Gasket, brush holder  |
| 26..... | RX-R2490 | Brush & Holder Kit  |
| 27..... | RX-H309  | Screw, brush holder   |
| 28..... | RX-R1552 | Carbon Brush & Spring   |
| 29..... | RX-R663  | Screw Cap   |
| 30..... | RX-R1448 | Motor Housing   |
| 31..... | RX-R1449 | Insulator, fld Scr Insert   |
| 32..... | RX-R1424 | Air Deflector   |
| 33..... | RX-H308  | Screw, lower bearing  |
| 34..... | RX-R1425 | Spider  |
| 35..... | RX-H13   | Shaft Nut   |
| 36..... | RX-R312  | Separator, this is the new style<br>w/ large hole. Older separators<br>will not fit newer motors. |
| 37..... | RX-R3450 | Screw, separator  |
| 38..... | RX-R1752 | Stage Assy, lower, w/ ground  |
| 39..... | RX-R1473 | Retainer, cover plate   |
| 40..... | RX-R1471 | Cover Plate   |
| 41..... | RX-R1470 | Gasket, cover plate   |
| 42..... | RX-R1794 | Gasket  |
| 43..... | RX-R1407 | Shell, motor housing  |
| 44..... | RX-R1795 | Gasket, lower shell   |
|         | RX-R1425 | Spider  |



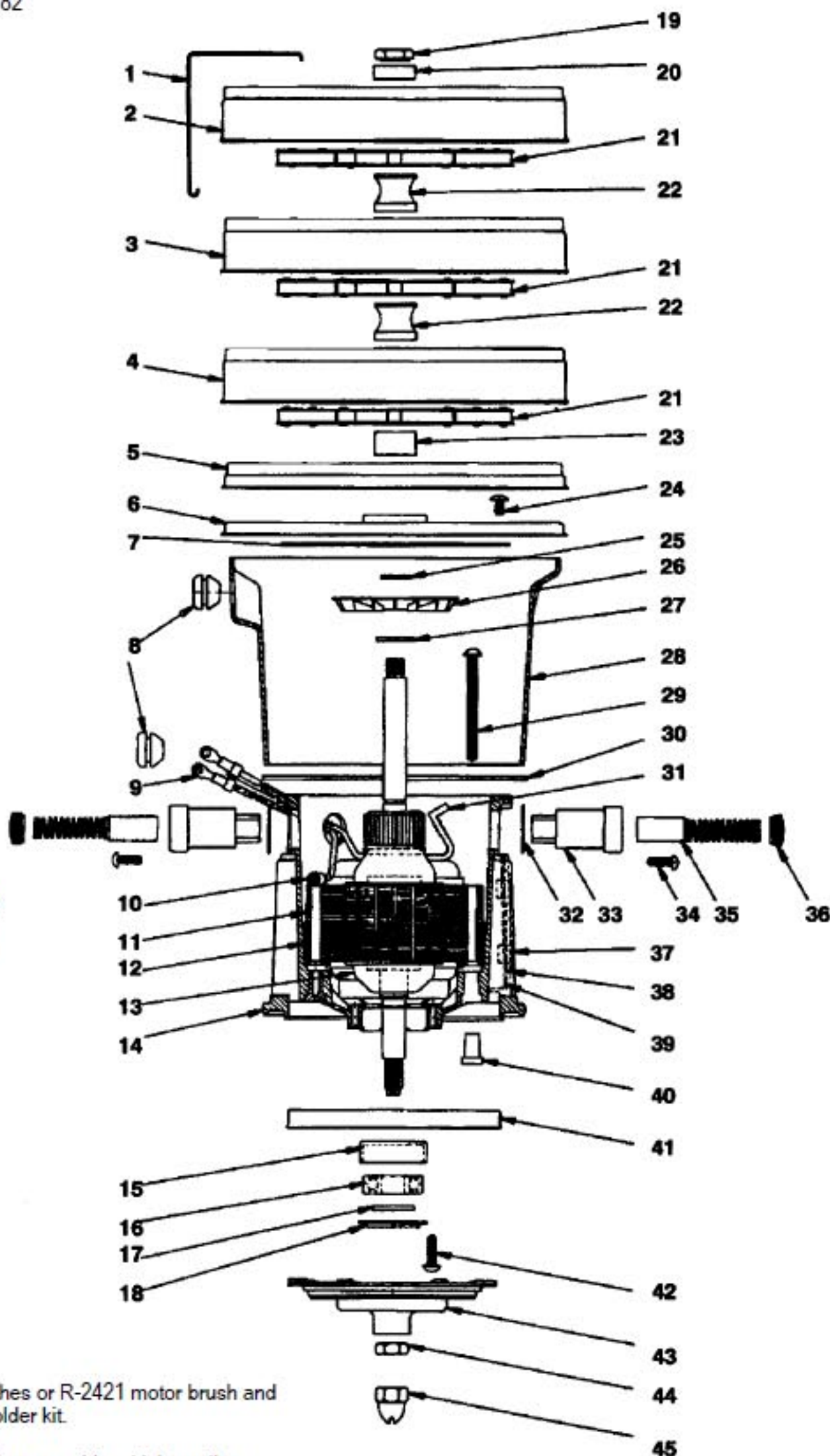
Note: when replacing old style R-1910 field with RX-R2424,  
you must include RX-R2490 brush and holder kit.

The armature and bearing construction were changed in order to provide a high-quality motor bearing. The following parts cannot be interchanged with previous constructions: armature assy, bearing plate assy, ball bearing, bearing boot, spider, bearing shield, slinger ring, lock nut (spider) acorn nut, motor fan, fan spacer, lower middle and upper fan spacers and fan assy.

### CURRENT MOTOR ASSEMBLY

Model: R-2104, beginning serial number 4607000, 6/5/82

- |     |          |   |
|-----|----------|---|
|     | RX-R2104 | Motor, complete   |
| 1   | RX-R1423 | Stage Housing Clip  |
| 2   | RX-R1421 | Stage Assy, upper   |
| 3   | RX-R1419 | Stage Assy, middle  |
| 4   | RX-R1752 | Stage Assy, lower, w/ ground                              |
| 5   | RX-R1418 | Air Guide   |
| 6   | RX-R1991 | Bearing Plate Assy  |
| 7   | RX-R1415 | Gasket, bearing plate                                     |
| 8   | RX-R665  | Grommet   |
| 9   | RX-R1642 | Terminal, insulated, revised                              |
| 9   | RX-R1853 | Terminal, after S.N. 4838444 & S.N. 4826642 - 4830159     |
| 10  | RX-H487  | Cable Clamp   |
| 11* | RX-R2424 | Field Assy  |
| 12  | RX-R1454 | Insulator, field  |
| 13  | RX-R1974 | Armature Assy   |
| 14  | RX-R1448 | Motor Housing   |
| 15  | RX-R1987 | Bearing Boot  |
| 16  | RX-R1981 | Ball Bearing  |
| 17  | RX-R1979 | Slinger Ring  |
| 18  | RX-R1980 | Bearing Shield  |
| 19  | RX-H306  | Shaft Nut   |
| 20  | RX-R1984 | Fan Spacer, upper   |
| 21  | RX-R1978 | Fan Assy  |
| 22  | N/A      | Fan Spacer, middle  |
| 23  | RX-R1982 | Fan Spacer, lower   |
| 24  | RX-H475  | Screw, bearing plate                                      |
| 25  | RX-H523  | Retaining Ring  |
| 26  | RX-R1975 | Cooling Fan, armature                                     |
| 27  | RX-R2107 | Fan Spacer  |
| 28  | RX-R1407 | Shell Motor Housing                                       |
| 29  | RX-H474  | Screw, motor field  |
| 30  | RX-R1795 | Gasket, lower shell                                       |
| 31  | RX-R2423 | Terminal, brush   |
| 32  | RX-R1455 | Gasket, brush holder                                      |
| 33  | RX-R2490 | Brush Holder Kit  |
| 33  | RX-R2421 | Carbon Brush, after S.N. 4838444 & S.N. 4826642 - 4830159 |
| 34  | RX-R2420 | Brush Holder, after S.N. 4838444 & S.N. 4826642 - 4830159 |
|     | RX-R2423 | Field Terminal  |
| 35  | RX-H309  | Screw, brush holder                                       |
| 36  | RX-R663  | Screw Cap, prior to 9/84                                  |
| 37  | RX-R1473 | Retainer, cover plate                                     |
| 38  | RX-R1471 | Cover Plate   |
| 39  | RX-R1470 | Gasket, cover plate                                       |
| 40  | RX-R1449 | Insulator, Fld Scr insert                                 |
| 41  | RX-R1424 | Air Deflector   |
| 42  | RX-H308  | Screw, lower bearing                                      |
| 43  | RX-R1976 | Spider  |
| 44  | RX-H526  | Lock Nut Spider   |
| 45  | RX-H524  | Acorn Nut, bevel  |
|     | RX-R312  | Separator   |



Note: If machine being serviced has old R-1552 carbon brushes or R-2421 motor brush and R2420 brush holder, you must purchase RX-R2490 brush holder kit.

The armature and bearing construction were changed in order to provide a high-quality motor bearing. The following parts cannot be interchanged with previous constructions: armature assy, bearing plate assy, ball bearing, bearing boot, spider, bearing shield, slinger ring, lock nut (spider) acorn nut, motor fan, fan spacer, lower middle and upper fan spacers and fan assy.

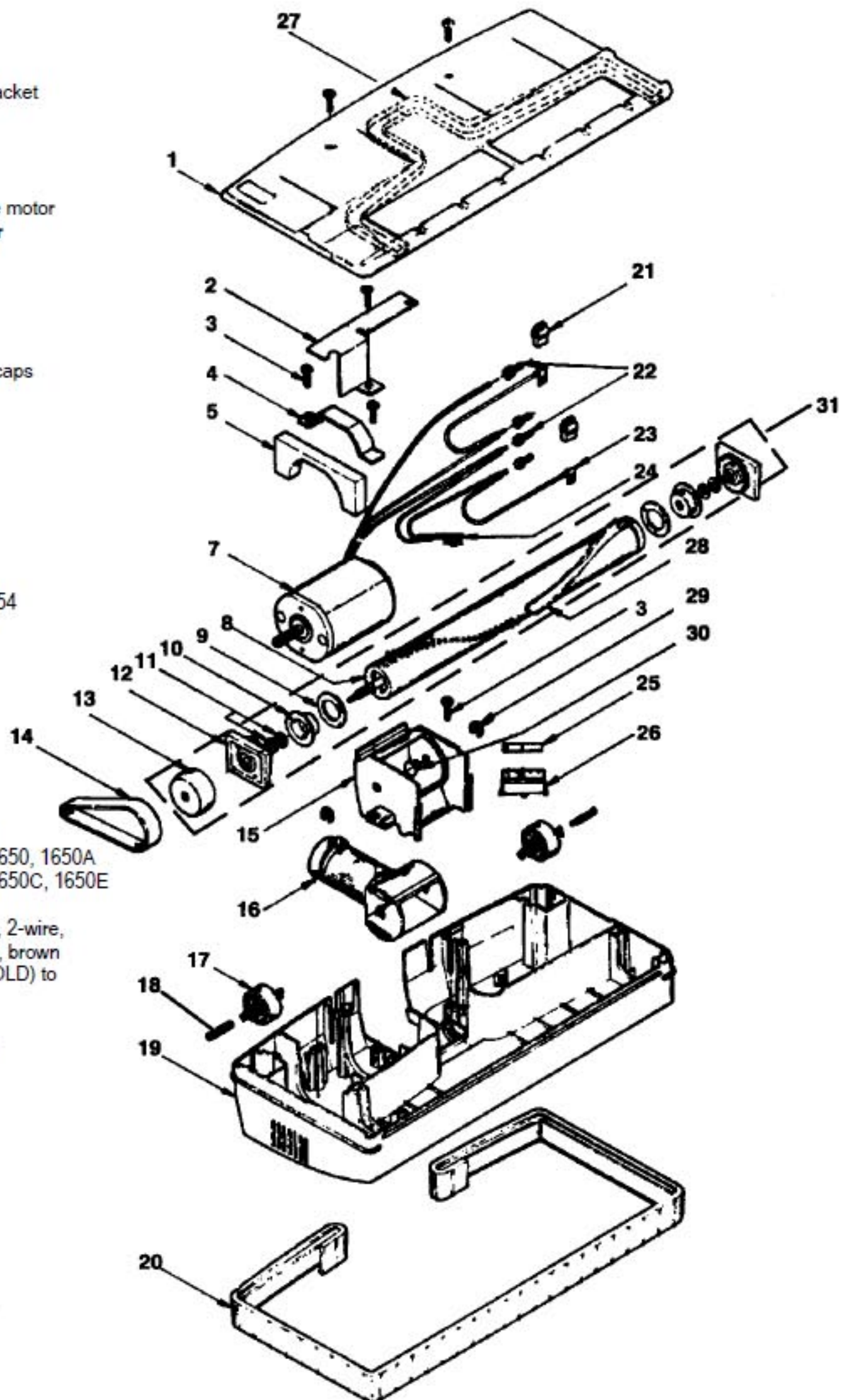
## POWER NOZZLE ASSEMBLY

Models: R-1650 /A/C/E

- |    |          |  |
|----|----------|--|
| 1  | RX-R2004 | Bottom Plate Assy  |
| 2  | RX-R1997 | Insulator  |
| 3  | RX-H515  | Screw  |
| 3  | RX-H552  | Screw, for use w/o motor bracket                                   |
| 4  | RX-R1716 | Motor Bracket  |
| 5  | RX-R1813 | Air Barrier  |
| 6  | RX-R2069 | Felt Pad   |
| 7  | RX-R1871 | Motor  |
|    | RX-R4662 | Carbon Brush, power nozzle motor                                   |
|    | RX-R4663 | Bearing, power nozzle motor  |
|    | RX-R3550 | Sleeve Assy  |
| 8  | RX-R1690 | Brush Roll Only, no ends   |
| 9  | RX-R1692 | Felt Seal  |
| 10 | RX-R1691 | Keeper   |
| 11 | RX-R1698 | Thrust Washer  |
| 12 | RX-R1744 | Bearing Assy, includes end caps                                    |
|    | RX-R2443 | End Caps   |
| 13 | RX-R1702 | Pulley   |
| 14 | RX-R1699 | Drive Belt   |
| 15 | RX-R1957 | Pivot Housing  |
| 16 | RX-R2081 | Pivot Arm Assy   |
| 17 | RX-R1703 | Wheel  |
| 18 | RX-R1704 | Wheel Pin  |
| 19 | NLA      | Main Housing   |
| 20 | RX-R2795 | Bumper   |
| 21 | NLA      | Insulation Pod, use RX-R1754                                       |
| 22 | RX-R1775 | Closed End Splice  |
| 23 | RX-R1754 | Lead Assy, w/ pod  |
| 24 | RX-R1818 | Indicator Light Assy   |
| 25 | RX-R1780 | Insulator, circuit breaker   |
| 26 | RX-R1747 | Circuit Breaker  |
| 27 | RX-R2003 | Gasket, bottom plate   |
| 28 | RX-R1695 | Beater Bar   |
| 29 | RX-H527  | E-Ring   |
| 30 | RX-R1996 | Clevis Pin   |
| 31 | RX-R1866 | Brush Roll Assy, complete  |
|    | RX-R2228 | Pivot Arm & Housing Kit, R1650, 1650A                              |
|    | RX-R3301 | Pivot Arm & Housing Kit, R1650C, 1650E                             |
|    | RX-H514  | Ground Screw, R1650A   |
|    | RX-R2496 | Power Nozzle Cord, 1 piece, 2-wire, machine to power nozzle, brown |
|    | RX-R1877 | Conversion Cord, 2 prong (OLD) to 3 prong (NEW)                    |

Rexair Parts for old Eureka style Power Nozzle that are not shown in Eureka Catalog.

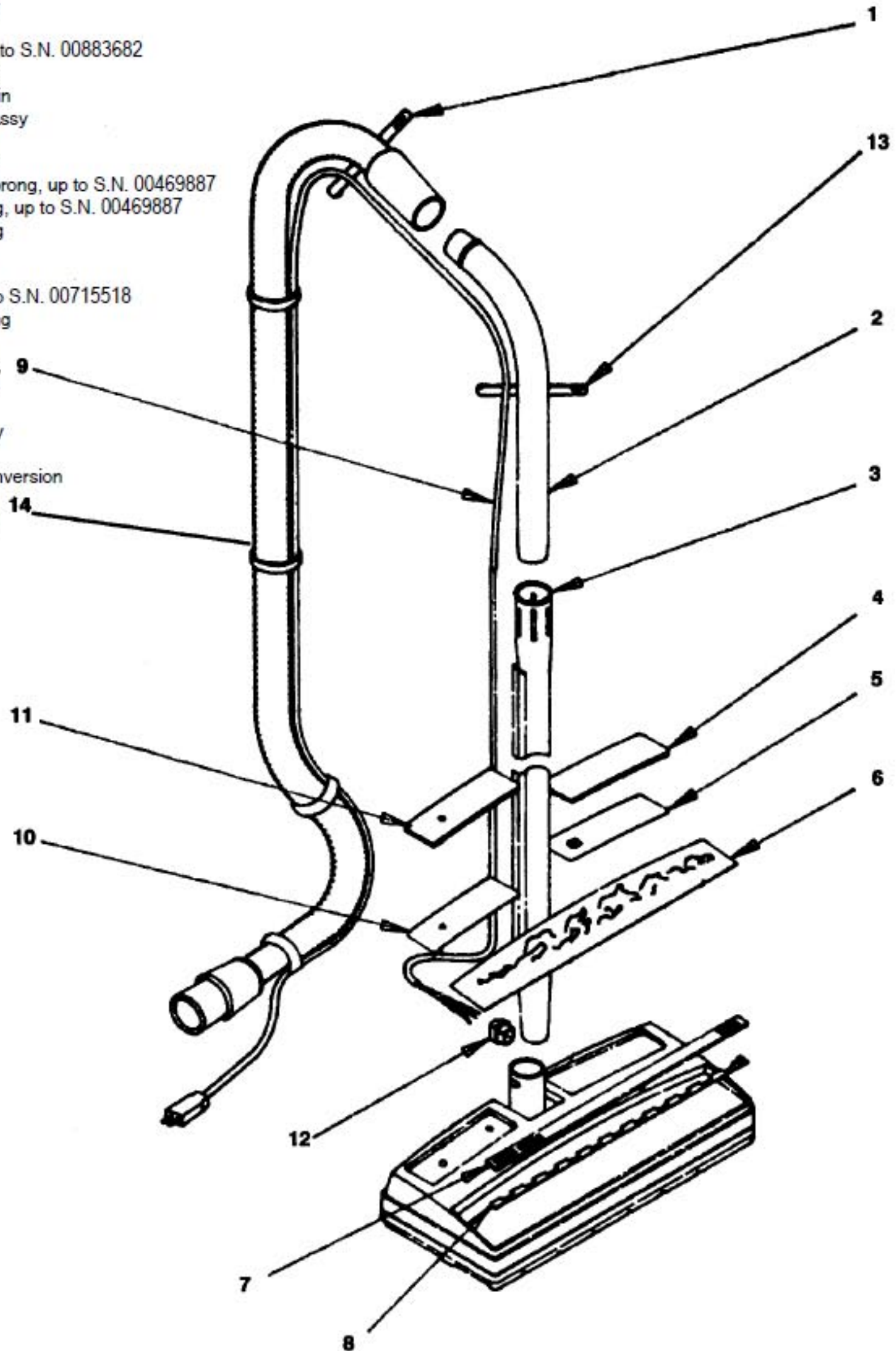
- |          |                   |
|----------|-------------------|
| RX-R6621 | Hose Assy         |
| RX-R1836 | Hose Cord, 3-wire |
| RX-R1868 | Wand Cord, 3-wire |



### POWER NOZZLE ASSEMBLY

Models: R-1650 /A/C/E

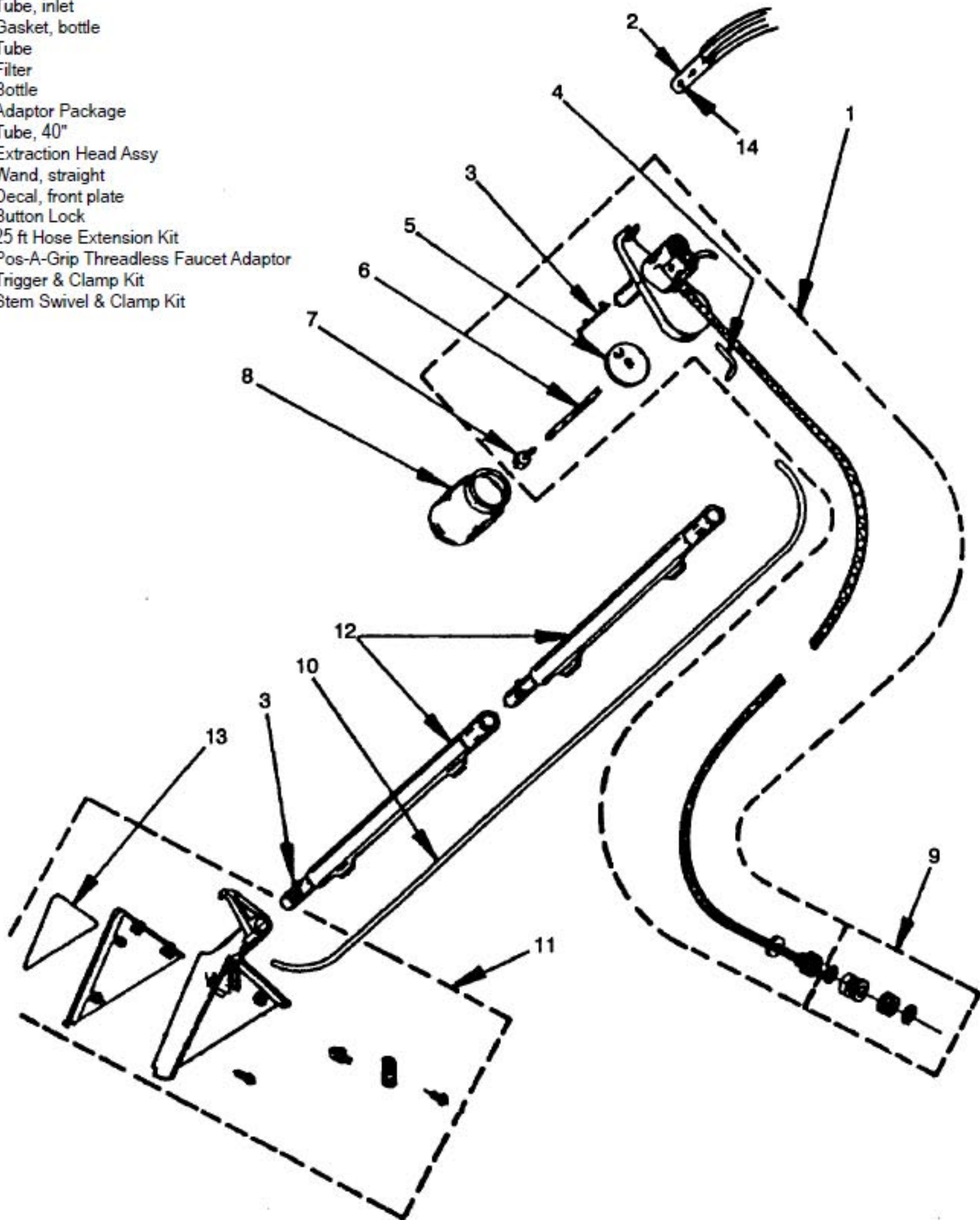
- |         |          |  |
|---------|----------|--|
| 1.....  | RX-R1045 | Hose Cord Strap                              |
| 2.....  | RX-R1999 | Curved Wand Assy                             |
| 3.....  | RX-R5066 | Straight Wand Assy                           |
| 4.....  | RX-R3051 | Lens, right side                             |
| 4.....  | N/A      | Lens, right side, up to S.N. 00883682        |
| 5.....  | RX-R3052 | Applique, right side                         |
| 6.....  | RX-R1994 | Applique, wood grain                         |
| 7.....  | RX-R1993 | Slide Valve Guide Assy                       |
| 8.....  | RX-R1990 | Slide Valve                                  |
| 9.....  | RX-R2496 | Cord, power nozzle                           |
| 9.....  | RX-R1717 | Extension Cord, 2 prong, up to S.N. 00469887 |
| 9.....  | RX-R1714 | Wand Cord, 2 prong, up to S.N. 00469887      |
| 9.....  | RX-R1836 | Wand Cord, 3 prong                           |
| 10..... | RX-R1729 | Applique, left side                          |
| 11..... | RX-R2685 | Lens, left side                              |
| 11..... | RX-R1684 | Lens, left side, up to S.N. 00715518         |
| 12..... | RX-R4053 | Strain Relief Bushing                        |
| 13..... | RX-R1045 | Strap, wand cord                             |
| 14..... | RX-R6621 | Hose Assy, 18 yarn, all except D4CSE         |
- 
- |          |                            |
|----------|----------------------------|
| RX-R2784 | Hose Coupling Assy         |
| RX-R579  | Molded Tip Only            |
| RX-R1877 | Extension Cord Conversion  |
| RX-R3520 | Cord Guide Replacement Kit |



### AQUAMATE EXTRACTION UNIT

Original Series R-2031

- |         |          |                                      |
|---------|----------|--------------------------------------|
| 1.....  | N/A      | Trigger Valve & 50 ft Hose Assy      |
| 2.....  | N/A      | Curved Wand Assy                     |
| 3.....  | NLA      | Button Lock                          |
| 4.....  | NLA      | Tube, inlet                          |
| 5.....  | N/A      | Gasket, bottle                       |
| 6.....  | NLA      | Tube                                 |
| 7.....  | N/A      | Filter                               |
| 8.....  | NLA      | Bottle                               |
| 9.....  | N/A      | Adaptor Package                      |
| 10..... | RX-R2026 | Tube, 40"                            |
| 11..... | NLA      | Extraction Head Assy                 |
| 12..... | N/A      | Wand, straight                       |
| 13..... | NLA      | Decal, front plate                   |
| 14..... | NLA      | Button Lock                          |
|         | RX-R2091 | 25 ft Hose Extension Kit             |
|         | RX-R2090 | Pos-A-Grip Threadless Faucet Adaptor |
|         | N/A      | Trigger & Clamp Kit                  |
|         | RX-R2233 | Stem Swivel & Clamp Kit              |



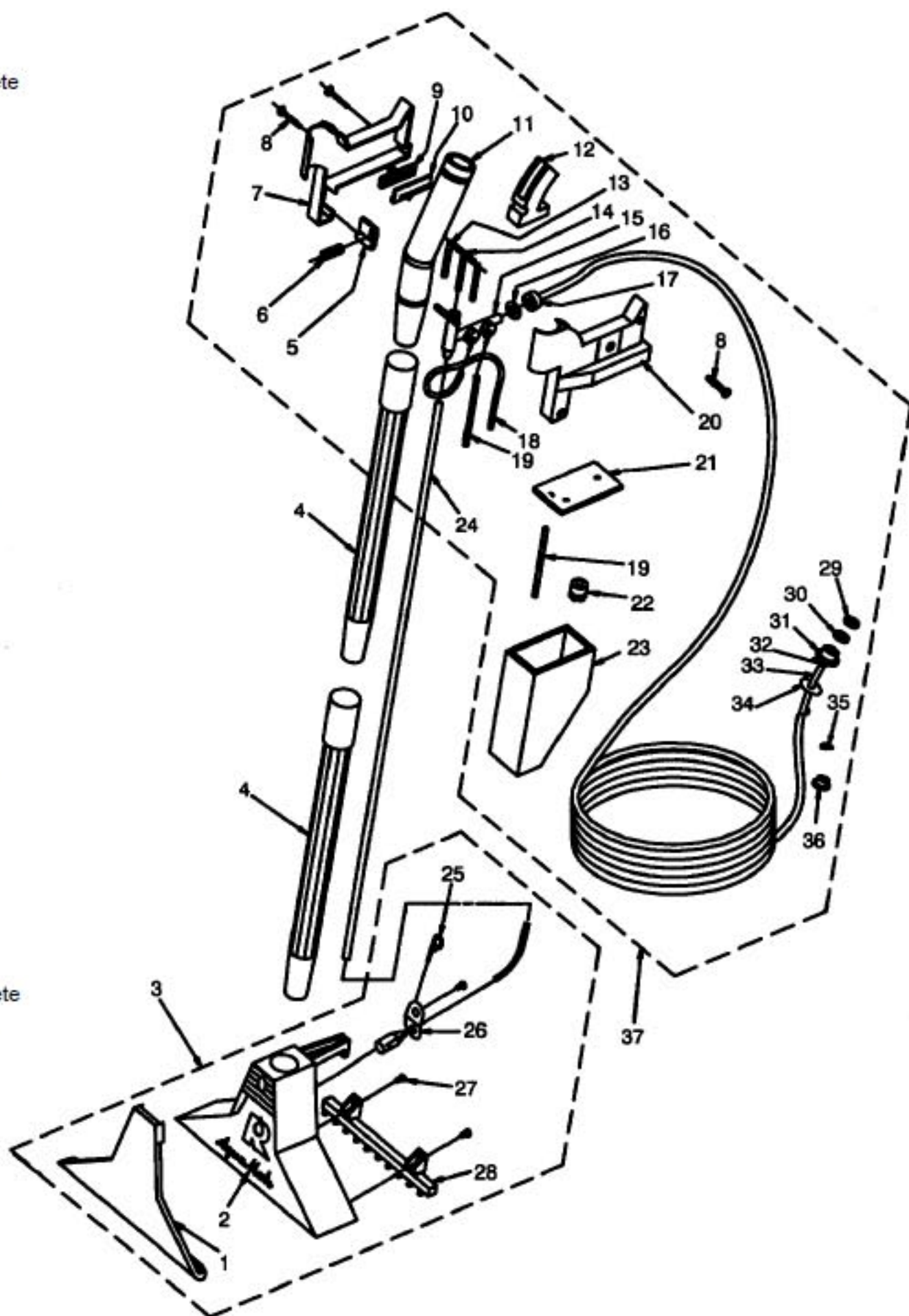
## "AQUAMATE" WATER EXTRACTION UNIT

Oxford Brown

- |         |          |       |                                |
|---------|----------|-------|--------------------------------|
| 1.....  | RX-R2269 | ..... | Front Plate                    |
| 2.....  | RX-R3581 | ..... | AquaMate Head Decal            |
| 3.....  | N/A      | ..... | Extraction Head Assy, complete |
| 4.....  | N/A      | ..... | Straight Wand Assy             |
| 5.....  | RX-R2322 | ..... | Bottle Latch                   |
| 6.....  | RX-R2321 | ..... | Latch Spring                   |
| 7.....  | N/A      | ..... | Right Housing Assy             |
| 8.....  | RX-H537  | ..... | Screw                          |
| 9.....  | RX-R2326 | ..... | Slide Adjustment               |
| 10..... | RX-R2318 | ..... | Pinch Arm                      |
| 11..... | N/A      | ..... | Bent Arm Assy                  |
| 12..... | RX-R2340 | ..... | Trigger                        |
| 13..... | RX-R6977 | ..... | Spring, trigger                |
| 14..... | RX-R2571 | ..... | Valve Control Rod Assy         |
| 15..... | RX-R2400 | ..... | Fluid Control Assy             |
| 16..... | RX-R2401 | ..... | "O" Ring                       |
| 17..... | RX-R2402 | ..... | Hose Connection                |
| 18..... | RX-R2602 | ..... | Detergent Inlet Tube           |
| 19..... | RX-R2483 | ..... | Overflow & Bottle Fill Tube    |
| 20..... | RX-R2471 | ..... | Left Housing Assy              |
| 21..... | RX-R2317 | ..... | Foam Gasket                    |
| 22..... | RX-R7351 | ..... | Flow Control                   |
| 23..... | N/A      | ..... | Solution Bottle Assy           |
| 24..... | RX-R2026 | ..... | 40" Tube                       |
| 25..... | N/A      | ..... | Nozzle Clean-Out Tool          |
| 26..... | RX-R2260 | ..... | Spray Nozzle Plate Kit         |
|         | RX-R2626 | ..... | Brass Spray Nozzle             |
|         | RX-R2627 | ..... | Support Plate                  |
| 27..... | RX-H491  | ..... | Screw                          |
| 28..... | RX-R2262 | ..... | Brush Assy                     |
| 29..... | RX-R2080 | ..... | Long Adaptor Thick Washer      |
| 30..... | RX-R7356 | ..... | Screen Washer                  |
| 31..... | RX-R6138 | ..... | Stern Nut                      |
| 32..... | RX-R2040 | ..... | Tubing Clamp                   |
| 33..... | RX-R4651 | ..... | 50 ft Hose Assy                |
| 34..... | RX-R2065 | ..... | Anti-Drip Washer               |
| 35..... | RX-R2079 | ..... | Washer, short adaptor          |
| 36..... | RX-R2045 | ..... | Adaptor, short                 |
| 37..... | N/A      | ..... | Control Network Assy, complete |
|         | RX-R2469 | ..... | Adaptor Package (included)     |
|         | RX-R2042 | ..... | Swivel Stem, white piece       |

RX-R5426

Stainless Steel Wands, 2 used



## D3 ATTACHMENTS

- |               |                        |               |                         |               |                       |
|---------------|------------------------|---------------|-------------------------|---------------|-----------------------|
| RX-R933.....  | Straight Wand          | RX-H528.....  | Screw, for floor tool   | RX-R1847..... | Body, upholstery tool |
| RX-R2807..... | Curved Wand            | RX-R981.....  | Crevice Tool            | RX-R841.....  | Separator Brush       |
| RX-R2792..... | Suction Control Sleeve | RX-R1730..... | Attachment Caddy        | RX-R6621..... | Hose Assembly, 9-yarn |
| RX-R934.....  | Bottom Wand            | RX-R588.....  | Dusting Brush Assy      | RX-R1518..... | Dolly Assy, complete  |
| RX-R2007..... | Floor Tool Assy        | RX-R192.....  | Bristles, dusting brush | NLA.....      | Dolly, w/o casters    |
| RX-R188.....  | Bristles, floor tool   | RX-R589.....  | Back, dusting brush     | RX-R1897..... | Casters, for dolly    |
| RX-R587.....  | Guard, floor tool      | N/A.....      | Upholstery Tool Assy    | RX-R3251..... | Applique, dolly       |
| N/A.....      | Lower Body, floor tool | RX-R900.....  | Brush, upholstery tool  | N/A.....      | Attachment Kit        |
| N/A.....      | Upper Body, floor tool |               |                         |               |                       |