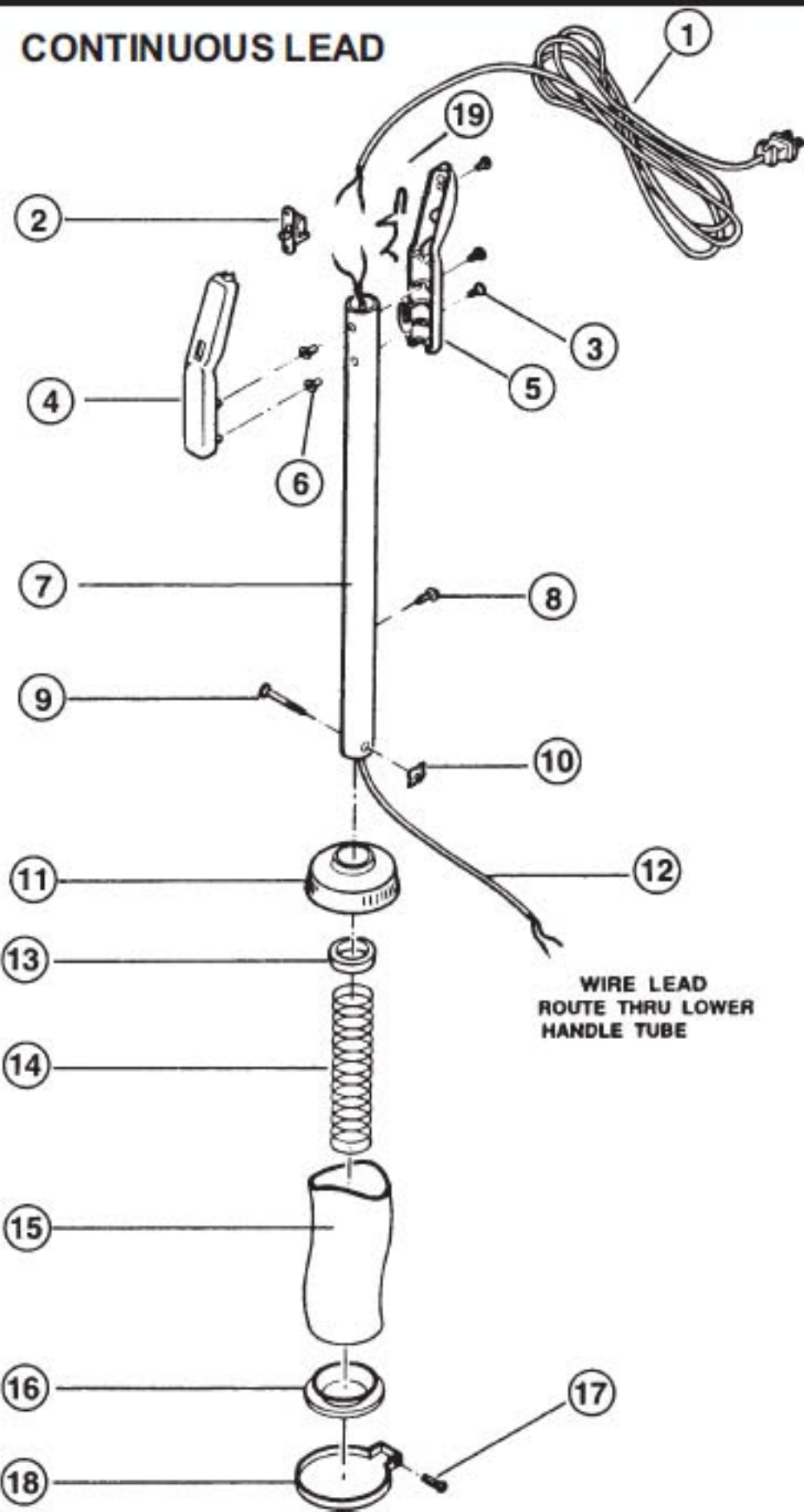


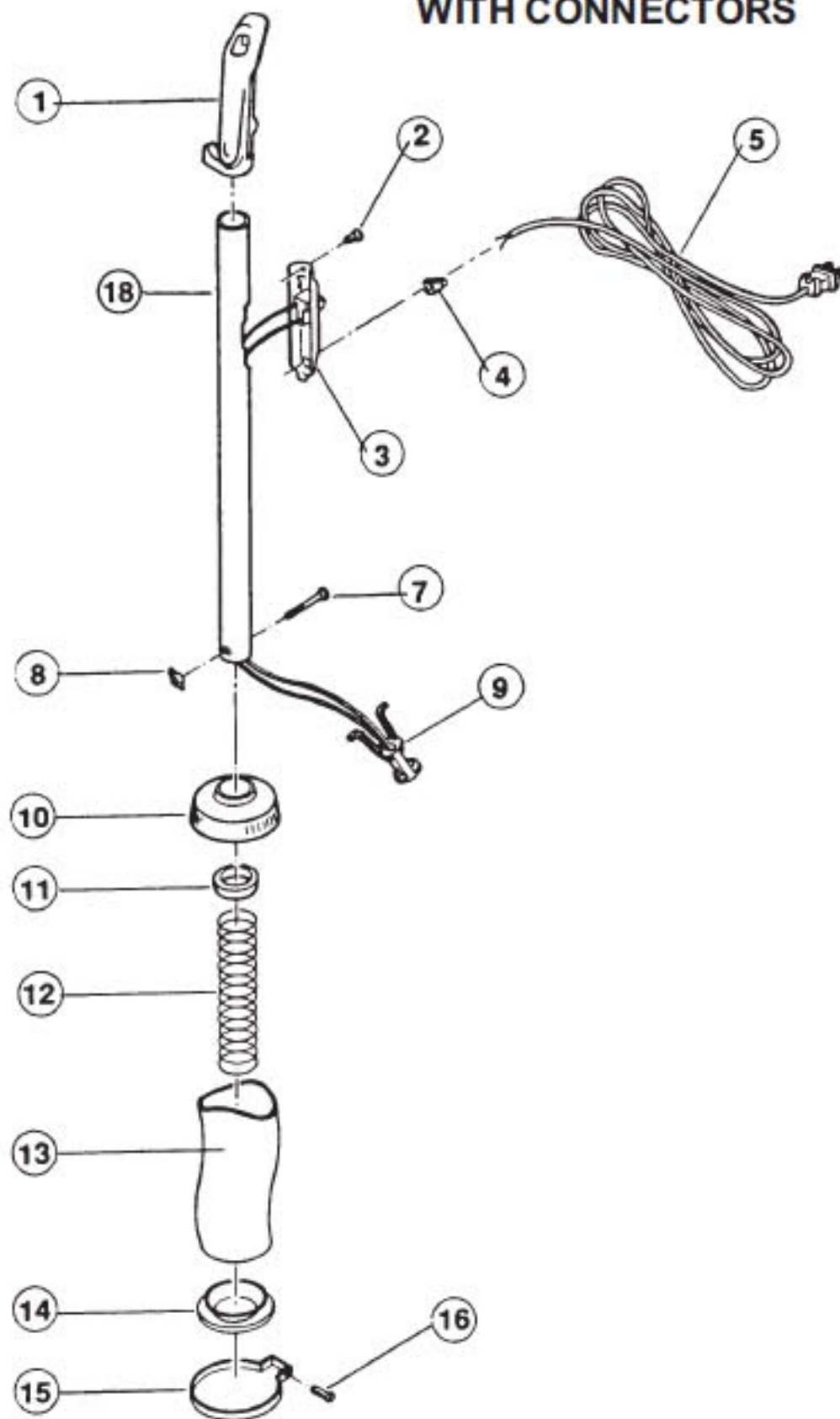
Models: SHB6910

Regina Powerteam Upper Assembly

CONTINUOUS LEAD



WITH CONNECTORS



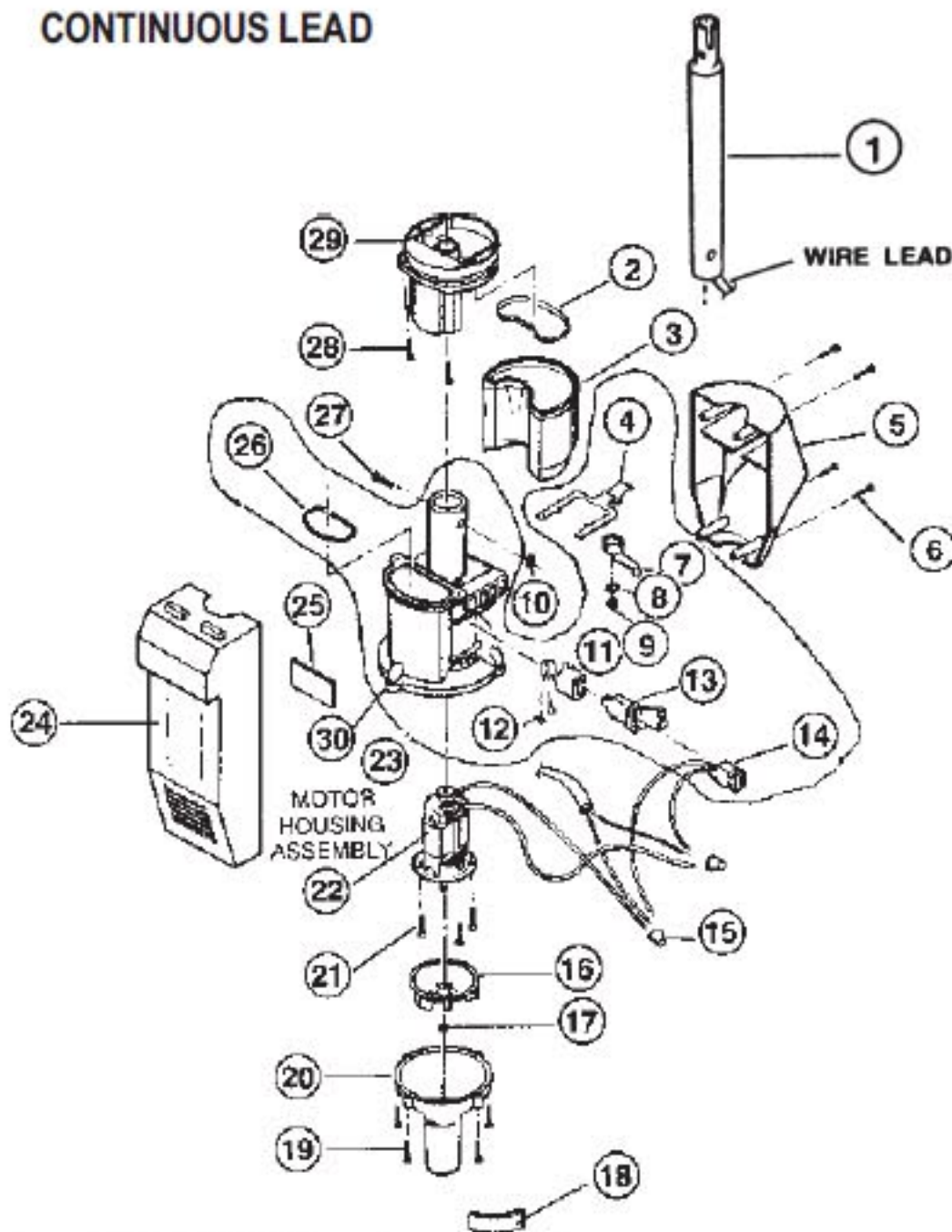
1	RG-071000499	Line Cord
2	RG-25511P1	Switch
3	RG-03794	Screw, handle grip
4	RG-25516P3AC	Upper Handle Grip
5	RG-25517P4AC	Lower Handle Grip
6	RG-03815	Eyelet
7	RG-0976100440328	Upper Handle Tube
8	RG-03530D	Screw
9	RG-03700D	Screw
10	RG-03712	Wing Nut
11	RG-25162P2AC	Filter Top, outer
12	RG-25548P1	Wire Lead, switch
13	RG-20122	Washer, filter top
14	RG-25193P1	Spring, filter top
15	RG-25246P7	Paper Bag
16	RG-25515P1AC	Filter Top, inner
17	RG-03572	Screw, filter top
18	RG-24624P1046	Filter Clamp
19	RG-2555501	Static Eliminator

1	order #6	Handle Grip
2	order #6	Screw
3	order #6	Switch Assembly
4	order #6	Strain Relief
5	order #6	Power Cord
6	RG-096300162	Upper Handle Tube Kit, includes #1, 2, 3, 4, 5, 6, 7, 8, 9, 18
7	RG-03700D	Screw, upper tube
8	RG-03712	Wing Nut
9	order #6	Connector Socket
10	RG-25162P2AC	Filter Top, outer
11	RG-20122	Washer, filter top
12	RG-25193P1	Spring, filter top
13	RG-25246P4	Paper Bag
14	RG-25515P1AC	Filter Top, inner
15	RG-24624P1046	Filter Clamp
16	RG-03572	Screw, filter clamp
18	order #6	Handle Tube

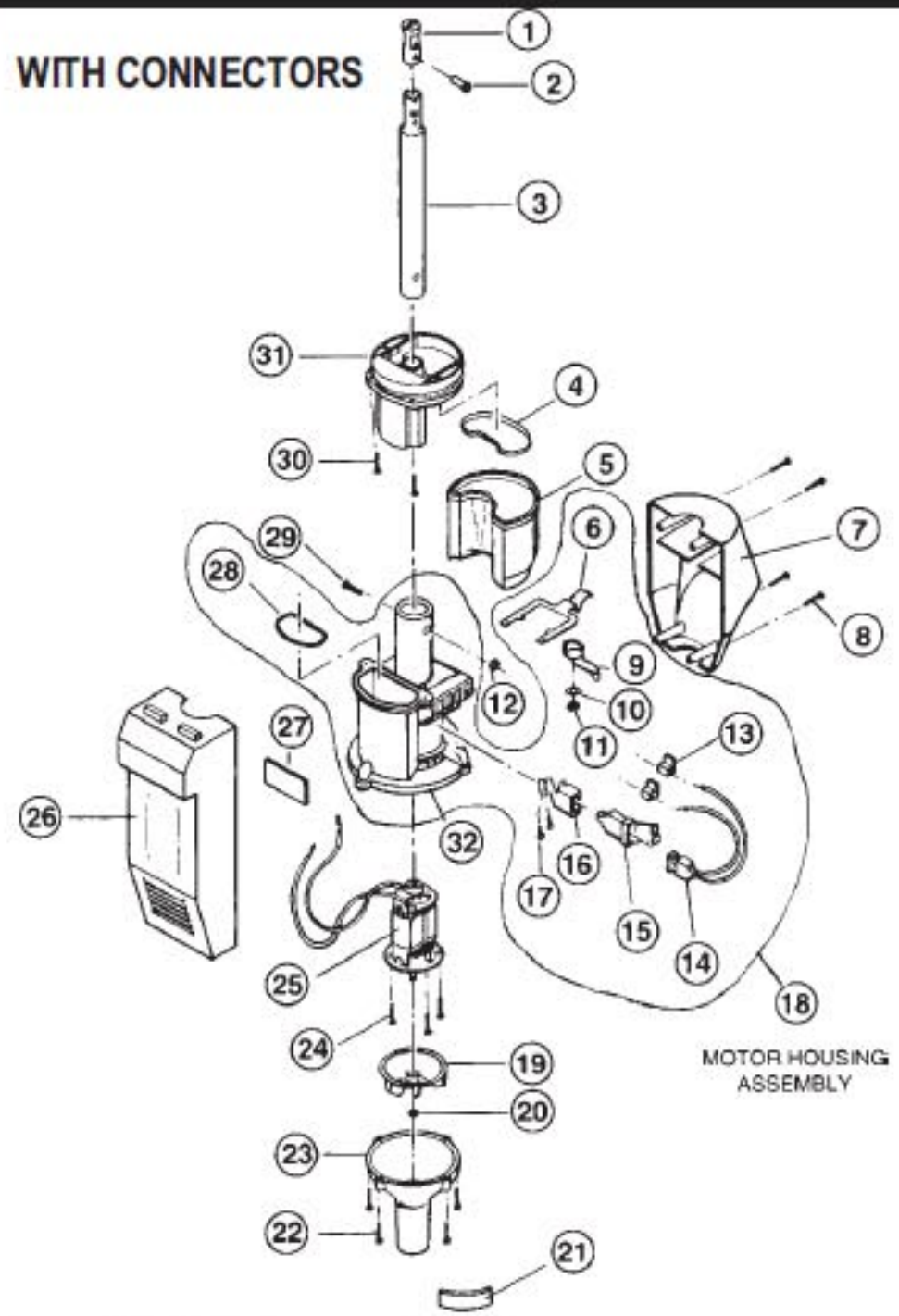
Models: SHB6910

Regina Powerteam Lower Assembly

CONTINUOUS LEAD



WITH CONNECTORS



- | | | |
|----|------------------|--|
| 1 | RG-0976100430328 | Lower Handle Tube |
| 2 | RG-24439P1 | Dirt Cup Sealing Ring |
| 3 | RG-25506P1AD | Dirt Cup |
| 4 | RG-24881P1 | Spring, dirt cup |
| 5 | RG-25021P1BS | Rear Shield |
| 6 | RG-03498 | Screw |
| 7 | order #23 | Locking Cam |
| 8 | order #23 | Washer |
| 9 | order #23 | Hex Nut |
| 10 | RG-03712 | Wing Nut |
| 11 | order #23 | Receptacle Bracket Kit |
| 12 | order #23 | Rivet |
| 13 | order #23 | Enclosure |
| 14 | order #23 | Power Cord, nozzle |
| 15 | RG-03318 | Connector, lead wire |
| 16 | RG-24340P1175 | Fan |
| 17 | RG-20252 | Nut, fan |
| 18 | RG-25022P1 | Gasket, fan housing |
| 19 | RG-03494 | Screw, fan housing |
| 20 | RG-25508P3BS | Fan Housing |
| 21 | RG-03526 | Screw, motor |
| 22 | RG-25009P15 | Motor |
| 23 | RG-925500G17 | Motor Housing Assy, #4,7,8,9,11,12,
13,14,26,30 |
| 24 | RG-925020G4 | Front Shield, w/ label |
| 25 | RG-25031P1 | Gasket, motor housing |
| 26 | RG-24632P1 | Seal, motor housing |
| 27 | RG-03625D | Screw, motor housing |
| 28 | RG-03490D | Screw, filter ring |
| 29 | RG-924440G2AC | Filter Ring Assembly |
| 30 | order #23 | Motor Housing |

- | | | |
|----|---------------|--|
| 1 | RG-25101P2AQ | Housing Connector |
| 2 | RG-25109P1AQ | Wire Protector Sleeve |
| 3 | RG-25104P3AC | Lower Handle Tube |
| 4 | RG-24439P1 | Sealing Ring, dirt cup |
| 5 | RG-25506P1AD | Dirt Cup |
| 6 | RG-24881P1 | Spring, dirt cup |
| 7 | RG-925021G1 | Rear Shield |
| 8 | RG-03498 | Screw |
| 9 | order #18 | Locking Cam |
| 10 | order #18 | Washer |
| 11 | order #18 | Hex Nut |
| 12 | RG-03712 | Wing Nut |
| 13 | RG-03645 | Connector, red |
| 14 | order #18 | Power Cord, nozzle |
| 15 | order #18 | Enclosure |
| 16 | order #18 | Receptacle Bracket Kit |
| 17 | order #18 | Rivet |
| 18 | RG-925500G17 | Motor Housing Assy, includes #6,9,10,
11,13,14,15,16,17,28,32 |
| 19 | RG-24340P1175 | Fan |
| 20 | RG-20252 | Nut, fan |
| 21 | RG-25022P1 | Gasket, fan housing |
| 22 | RG-03494 | Screw, fan housing |
| 23 | RG-25508P3BS | Fan Housing |
| 24 | RG-03526 | Screw, motor |
| 25 | RG-25009P8 | Motor |
| 26 | RG-925020G4 | Front Shield |
| 27 | RG-25031P1 | Gasket, motor housing |
| 28 | RG-24632P1 | Seal, motor housing |
| 29 | RG-03625D | Screw, filter ring |
| 30 | RG-03490D | Screw, filter ring |
| 31 | RG-924440G2AC | Filter Ring Assy |
| 32 | order #23 | Motor Housing |