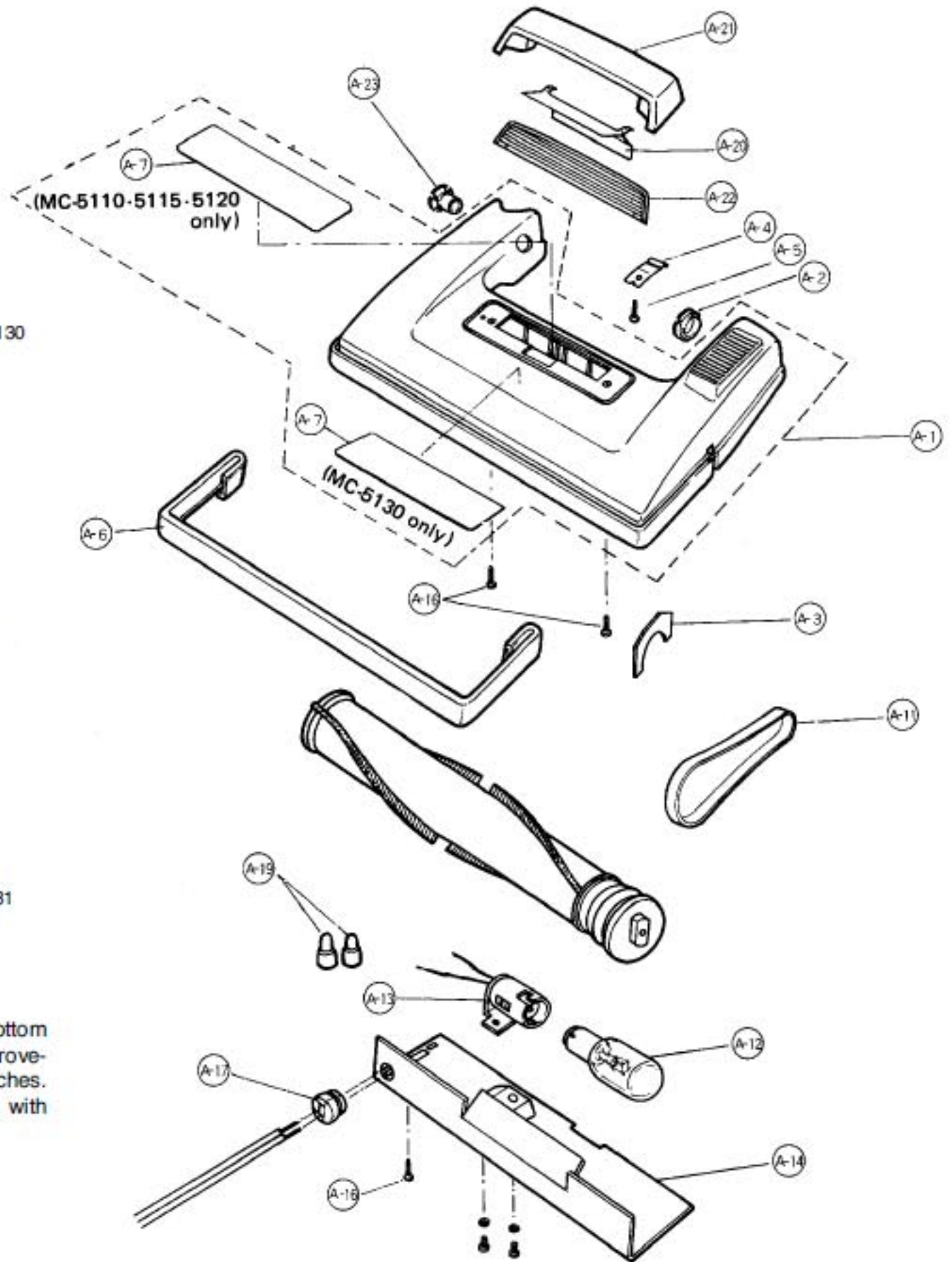


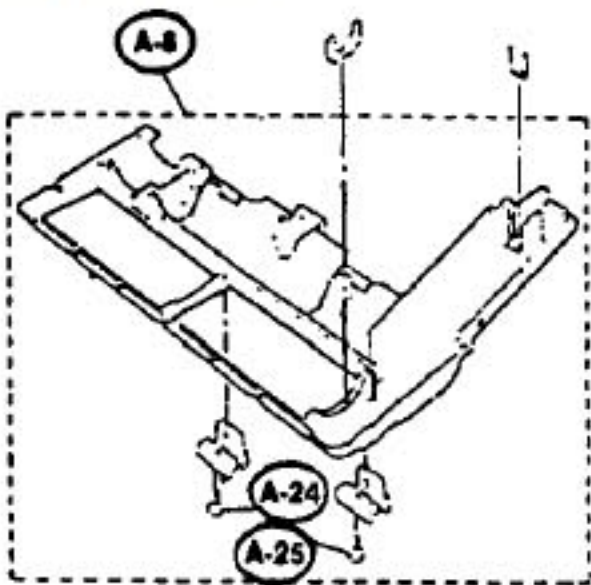
Models: MC-5110, MC-5111, MC-5115, MC-5116, MC-5120, MC-5121, MC-5130, MC-5131

Nozzle Housing

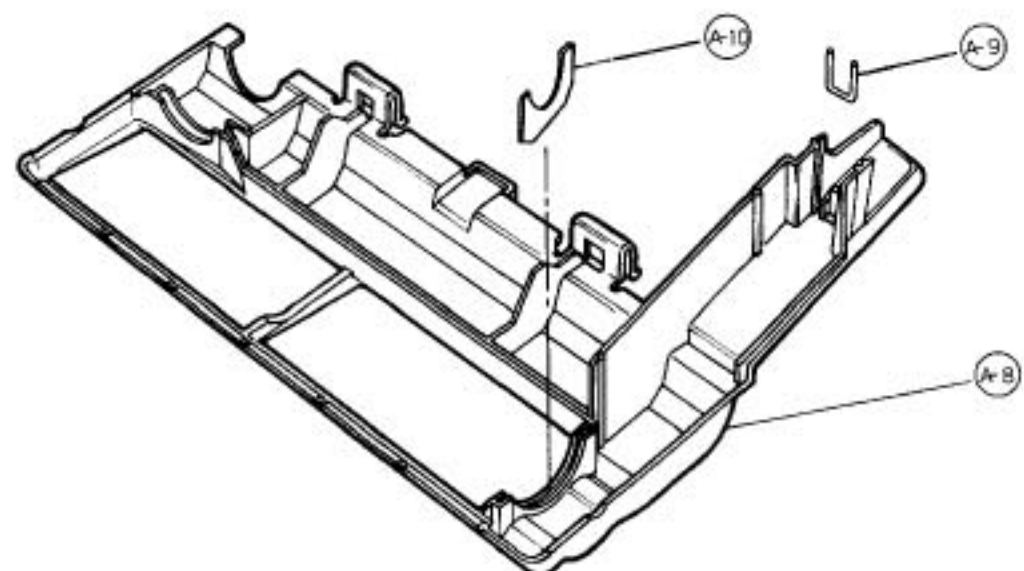
A1	P-0101	Nozzle Housing, 5110
A1	P-0190	Nozzle Housing, 5115
A1	P-0111	Nozzle Housing, 5120
A1	P-0120	Nozzle Housing, 5130
A1	P-0121	Nozzle Housing, 5111
A1	P-0122	Nozzle Housing, 5116
A1	P-0123	Nozzle Housing, 5121
A1	P-0124	Nozzle Housing, 5131
A2	P-78	Plastic Holder
A3	P-81	Tight Packing
A4	P-58	Pedal Spring
A5	P-416	Screw, 10 pk
A6	P-1012	Furniture Guard, 5110,5120,5130
A6	N/A	Furniture Guard, 5115
A6	P-1005	Furniture Guard, 5111
A6	P-1006	Furniture Guard, 5116
A6	P-1007	Furniture Guard, 5121,5131
A7	P-0200	Top Mark, 5110
A7	P-0291	Top Mark, 5115
A7	P-0211	Top Mark, 5120
A7	N/A	Top Mark, 5130
A7	P-0221	Top Mark, 5111
A7	P-0222	Top Mark, 5116
A7	N/A	Top Mark, 5121
A7	P-0224	Top Mark, 5131
A8	P-9101	Bottom Plate Assy, new style
A9	P-4303	Belt Cover
A10	P-7500	Body Packing
A11	P-2287	Belt, 2 pack
A11	P-200	Belt, sold each (R)
A12	MP-25K	Bulb, 25 watt (R)
A13	N/A	Lamp Holder
A14	P-8520	Bulb Supporter
A16	P-416	Screw, 10 pk
A17	SS-34	Wire Bushing, sold each (R)
A19	SS-71B	Wire Nut, 100 pack (R)
A20	P-842	Reflection Plate
A21	P-8620	Supporter, reflection plate
A21	P-8621	Supporter, reflection plate, 5131
A22	P-2120	Window
A23	P-2500	Shaft, plastic



Early production 5100 series used a one piece bottom plate with molded latches. There has been an improvement on current production featuring replaceable latches. Early bottom plates that break, must be replaced with bottom plate # P-2702.

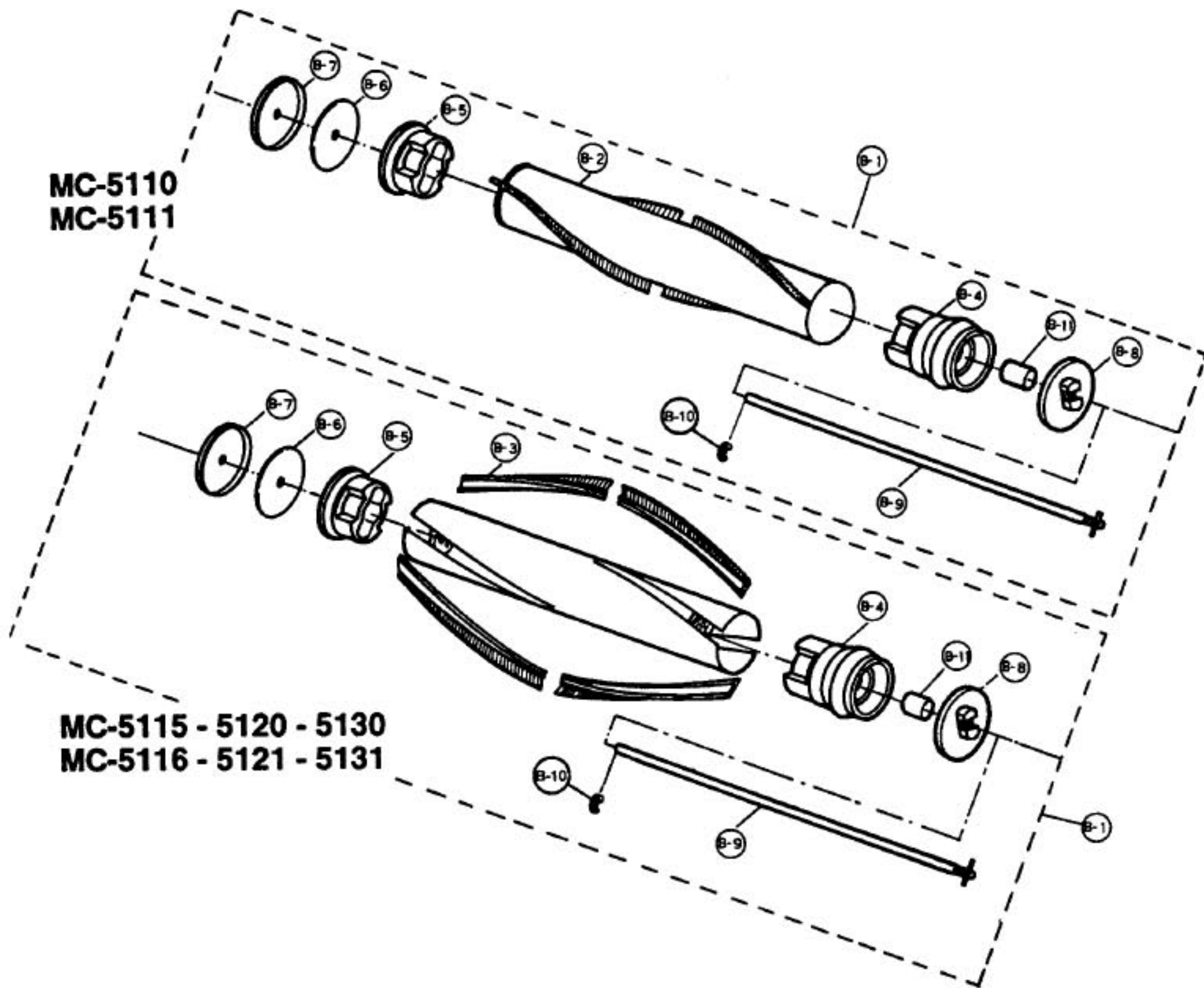


A8	P-9101	Bottom Plate Assy
A24	P-0800	Latch
A24	P-8	Latch
A25	P-416	Screw, 10 pk



Models: MC-5110, MC-5111, MC-5115, MC-5116, MC-5120, MC-5121, MC-5130, MC-5131

Agitator Assembly



MC-5110
MC-5111

MC-5115 - 5120 - 5130
MC-5116 - 5121 - 5131

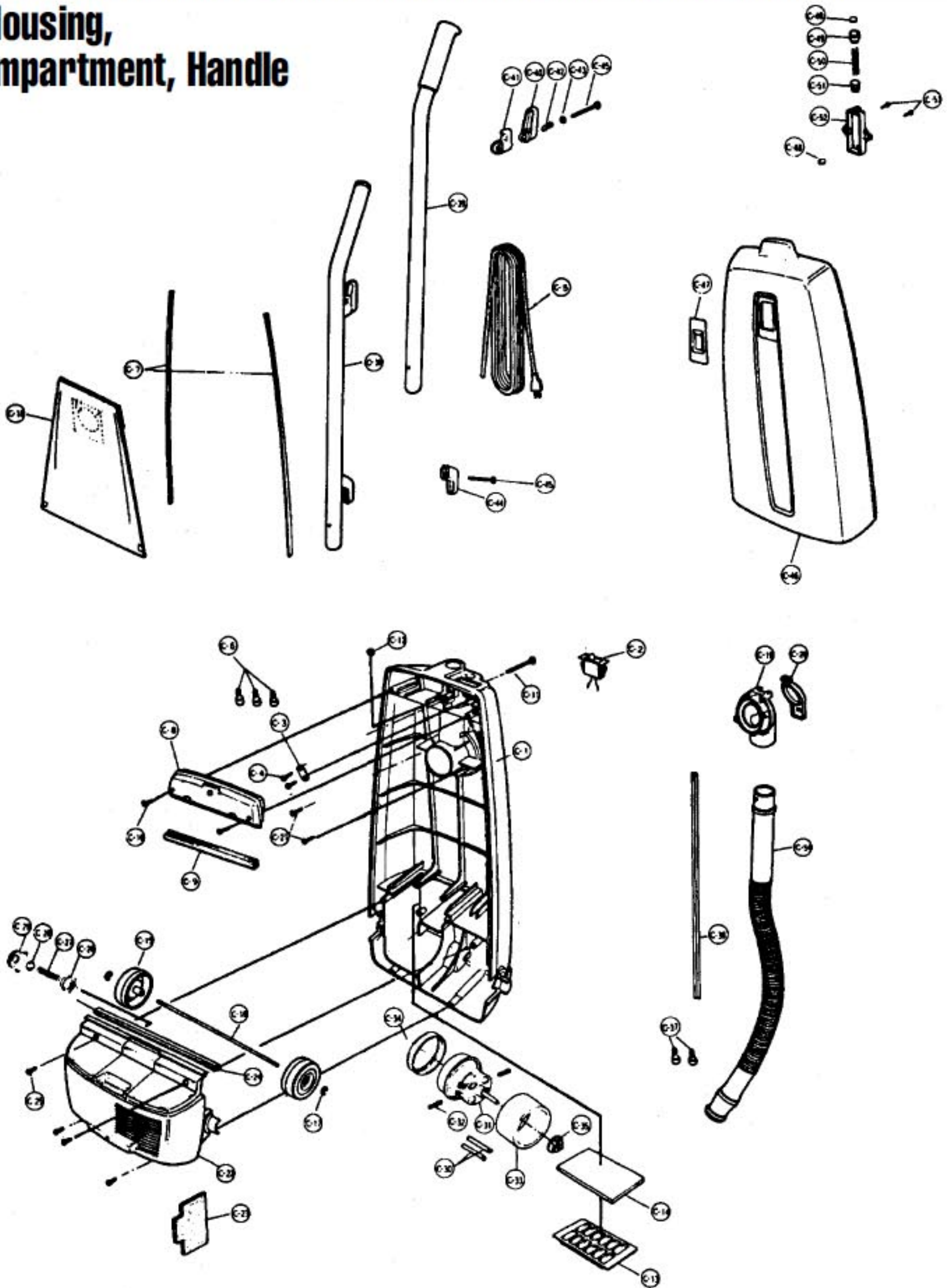
B1 P-9 Agitator Assy, 5110,5111
 B1 P-921 Agitator Assy, 5115,5120,5130,
 5116,5121,5131
 B1 P-510 Agitator Assy, 5100 series (R)
 B2 P-84 Agitator Tube

B3 P-85 Brush Insert
 B3 P-425 Brush Insert, (R)
 B4 N/A Agitator Pulley, w/ bearing
 B5 P-4101 Agitator Holder, w/ bearing
 B6 P-321 Filter

B8 P-00125 ... End Cap, right
 B7 P-960 End Cap, left
 B9 P-57 Agitator Shaft
 B10 P-411 E-Clip
 B11 P-74 Spacer

Models: MC-5110, MC-5111, MC-5115, MC-5116, MC-5120, MC-5121, MC-5130, MC-5131

Motor Housing, Dust Compartment, Handle



Models: MC-5110, MC-5111, MC-5115, MC-5116, MC-5120, MC-5121, MC-5130, MC-5131

Motor Housing, Dust Compartment, Handle

C1	P-400	Dust Compartment	C38	P-333	Protector Filter
C1	P-4002	Dust Compartment, 5111,5116,5121, 5131	C39	P-6400	Handle, 5110
C2	H-339	Switch, on/off (R)	C39	P-6410	Handle, 5115
C3	P-622	Cord Stopper	C39	P-6411	Handle, 5120
C4	P-416	Screw, 10 pk	C39	P-6412	Handle, 5130
C5	MP-225	Cord, 20 ft, white (R)	C39	P-6401	Handle, 5111
C5	MP-230	Cord, 30 ft, white (R)	C39	P-6415	Handle, 5116
C6	SS-71B	Wire Nut, 100 pack (R)	C39	P-6416	Handle, 5121
C7	P-66	Gasket, rubber	C39	P-6420	Handle, 5131
C8	P-031	Switch Cover	C40	P-5337	Cord Hook, upper
C8	P-0304	Switch Cover, 5111,5116,5121,5131	C40	P-5301	Cord Hook, upper, 5111
C9	P-73	Gasket, rubber	C40	P-5302	Cord Hook, upper, 5116
C10	P-416	Screw, 10 pk	C40	P-5303	Cord Hook, upper, 5121,5131
C11	P-7301	Screw, handle	C41	P-5501	Cord Hook
C12	P-2117	Nut	C41	P-5503	Cord Hook, 5111
C13	P-3200	Filter Supporter	C41	P-5500	Cord Hook, 5116
C14	P-375	Secondary Filter	C41	P-5502	Cord Hook, 5121,5131
C15	P-0102	Roller	C42	P-7670	Spring, cord hook
C15	P-0107	Roller, 5111,5116,5121,5131	C43	P-587	Washer
C16	P-161	Shaft, roller	C44	P-5407	Cord Hook, lower
C17	P-05	E-Clip, 30 pk	C44	P-541	Cord Hook, lower, 5111
C18	P-115P	Paper Bag, type "U", 3 pack	C44	P-543	Cord Hook, lower, 5116
C18	P-115PT	Paper Bag, type "U", 12 pack	C45	P-430	Screw
C18	253	Paper Bag, type "U", 3 pack (R)	C46	P-606	Dust Cover, 5110,5115
C18	253-12	Paper Bag, type "U", 12 pack (R)	C46	P-602	Dust Cover, 5120,5130
C18	MF11	Paper Bag, microfiltration, 3 pack (R)	C46	P-6020	Dust Cover, 5111
	P-9923	Cloth Bag, w/ slide, blue	C46	P-6024	Dust Cover, 5116
	P-55	Cloth Bag, w/ zipper (R)	C46	P-6025	Dust Cover, 5121,5131
C19	P-607	Suction Inlet	C47	P-1122	Indicator Plate
C19	P-6075	Suction Inlet, 5111,5116,5121,5131		P-2121	Ornamental Plate, 5111
C20	P-0271	Cover		P-2122	Ornamental Plate, 5116
C20	P-02712	Cover, 5111,5116,5121,5131		P-1121	Vac Gauge Plate, 5121
C21	P-416	Screw, 10 pk		P-1123	Vac Gauge Plate, 5131
C22	P-091	Motor Case	C48	P-9300	Packing, indicator
C22	P-0901	Motor Case, 5111,5116,5121,5131	C49	P-1720	Indicator Cap
C23	P-201	Packing, rear cover	C50	P-4212	Spring, indicator
C24	P-195	Packing, motor case	C51	P-0368	Indicator Lead
C25	P-416	Screw, 10 pk	C52	P-1520	Indicator Pipe
C26	P-6921	Protector	C53	P-4100	Screw
C27	P-7000	Spring, protector	C54	P-3403	Nozzle Hose
C28	P-6820	Protector Case	C54	P-3404	Nozzle Hose, 5121,5131
C29	P-182	Supporter, protector			
C30	P-441	Lead Wire			
C31	P-926	Motor			
C32	P-272	Carbon Brush, 5111,5116,5121,5131			
C33	P-9920	Noise Suppressor			
C34	P-0293	Motor Support Rubber, front			
C35	P-0303	Motor Support Rubber, rear			
C36	P-377	Wire Cord, all models except 5130			
C36	P-376	Wire Cord, 5130			
C37	SS-71B	Wire Nut, 100 pack (R)			