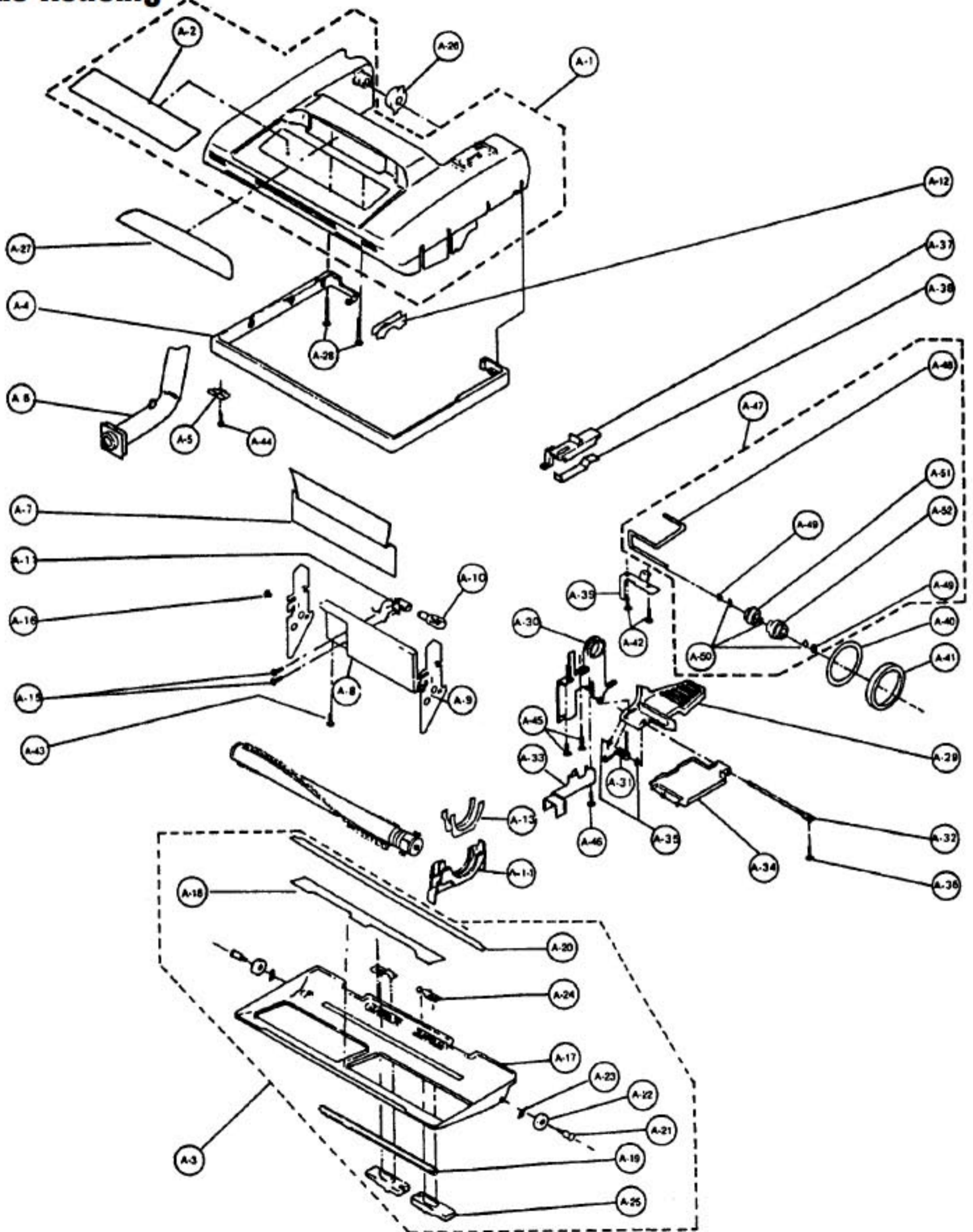


Models: MC-6217, MC-6250, MC-6255

## Nozzle Housing



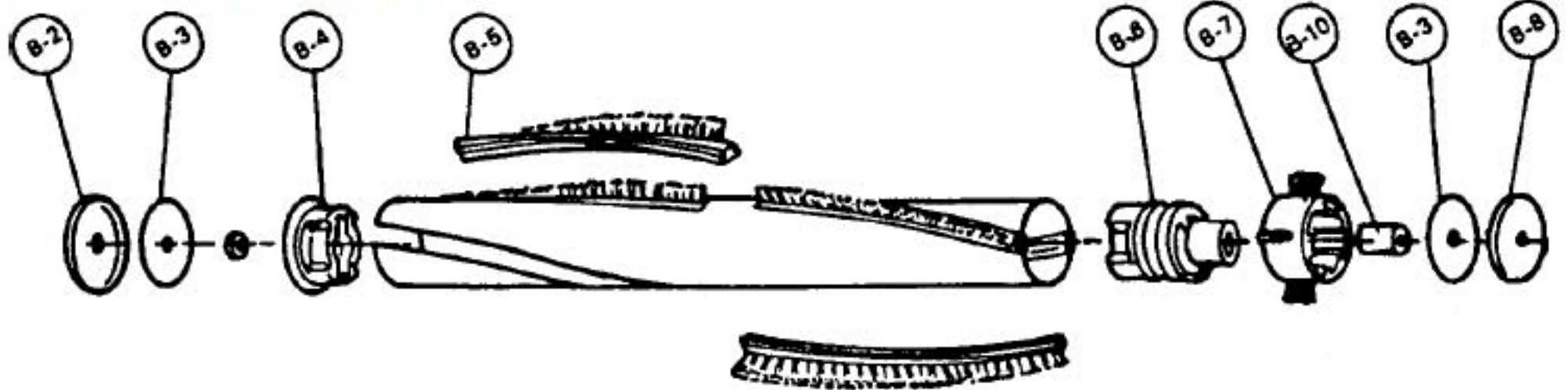


Models: MC-6217, MC-6250, MC-6255

A1..... P-0191..... Nozzle Housing, 6217	A17..... P-0014..... Lower Plate, 6250, 6255	A39..... P-593..... Fitting Board
A1..... P-0001..... Nozzle Housing, 6250	A18..... P-193..... Packing, lower plate, front	A40..... P-245..... Belt Pkg, 1 round/1 flat
A1..... P-0002..... Nozzle Housing, 6255	A19..... P-1032..... Floor Nozzle Rubber	A40..... P-324..... Belt, round, sold each (R)
A2..... P-0003..... Top Mark 6250	A20..... P-7430..... Packing, lower plate, back	A41..... P-242..... Belt, flat, 2 pack
A2..... P-0005..... Top Mark, 6255	A21..... P-503..... Shaft, floor nozzle roller	A41..... P-325..... Belt, flat, sold each
A2..... P-29..... Top Mark, 6217	A22..... P-909..... Roller, floor nozzle	A42..... P-416..... Screw, fitting board, 10 pk
A3..... P-9130..... Lower Plate Assy, 6217	A23..... P-04..... Spring Nut, push-on	A43..... P-416..... Screw, bulb supporter, 10 pk
A3..... P-0006..... Lower Plate Assy, 6250, 6255	A24..... P-704..... Spring, stop latch	A44..... P-416..... Screw, hose fitting plate, 10 pk
A4..... P-1036..... Furniture Guard, 6217	A25..... P-2751..... Latch	A45..... P-418..... Screw, frame
A4..... P-0008..... Furniture Guard, 6250, 6255	A26..... P-2530..... Shaft, plastic	A46..... P-263..... Screw, guide lever
A5..... P-2731..... Hose Fitting Plate	A27..... P-2131..... Window	A47..... P-8510..... Pulley Assembly
A6..... P-7030..... Nozzle Pipe	A28..... P-683..... Screw, nozzle housing	A48..... P-1014..... Idler Pulley Shaft
A7..... P-6010..... Reflector, 6217	A29..... P-2433..... Pedal, 6217, 6255	A49..... P-05..... E-Clip, 30 pl
A7..... P-0010..... Reflector, 6250, 6255	A29..... P-0016..... Pedal, 6250	A50..... P-1600..... Washer
A8..... P-853..... Bulb Supporter, 6217	A30..... P-433..... Frame	A51..... P-334..... Pulley
A8..... P-0011..... Bulb Supporter, 6250, 6255	A31..... P-583..... Spring, pedal	A52..... P-901..... Idler Pulley
A9..... P-863..... Side Plate, bulb supporter, 6217	A32..... P-513..... Shaft, pedal	P-2424..... Wire Cord, 6250, 6255
A9..... P-0012..... Side Plate, bulb supporter, 6250, 6255	A33..... P-754..... Guide Lever	P-9425..... Attachment Hose, 6250, 6255
A10..... MP-25K..... Bulb, 25 watt (R)	A34..... P-1130..... Belt Cover, rear	
A11..... P-938..... Bulb Socket	A35..... P-411..... E-Clip	
A12..... P-813..... Tight Packing	A36..... P-416..... Screw, pedal shaft, 10 pk, 6217	
A13..... P-753..... Packing, body	A36..... P-4201..... Screw, pedal shaft, 10 pk, 6250, 6255	
A14..... P-4330..... Belt Cover	A37..... P-1832..... Selector Lever, 6217	
A15..... P-360..... Screw, bulb socket	A37..... P-0019..... Selector Level, 6250	
A16..... P-2423..... Wire Bushing	A37..... P-0020..... Selector Level, 6255	
A17..... P-2733..... Lower Plate, 6217	A38..... P-243..... Spring, selector	

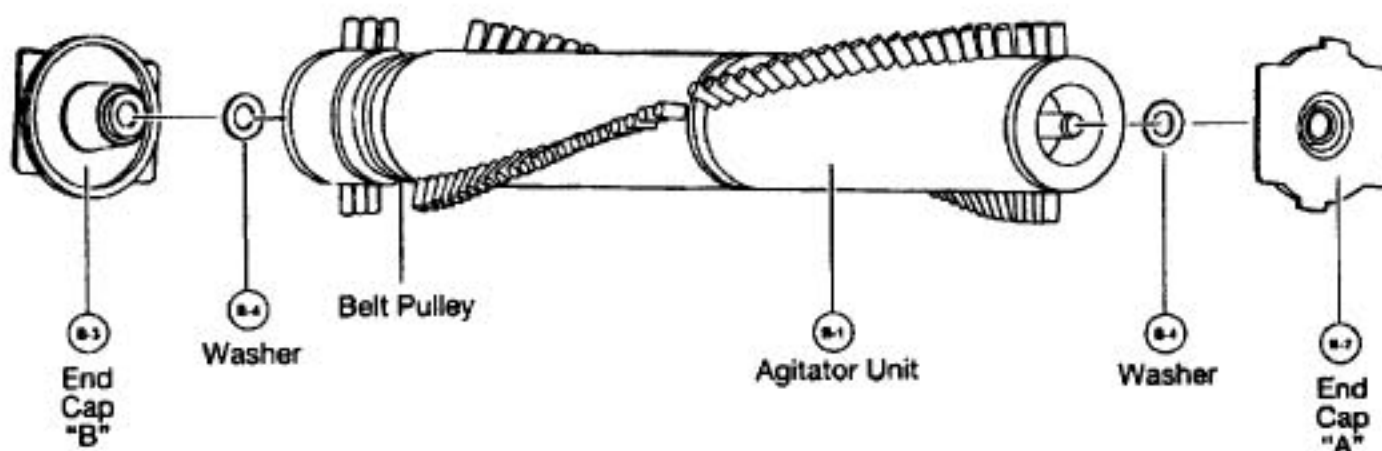
## Agitator Assembly

MC-6217



P-9231..... Agitator Assembly, complete	B5..... P-85..... Brush Strip, 4 used	P-411..... E-Clip
B2..... P-00125..... End Cap, left	B6..... P-783..... Agitator Pulley	B10..... P-7431..... Spacer
B3..... P-304..... Filler	B7..... P-9034..... Brush Holder	P-5730..... Agitator Shaft
B4..... P-881..... Agitator Holder, w/ bearing	B8..... N/A..... End Cap, right	

MC-6250, MC-6255

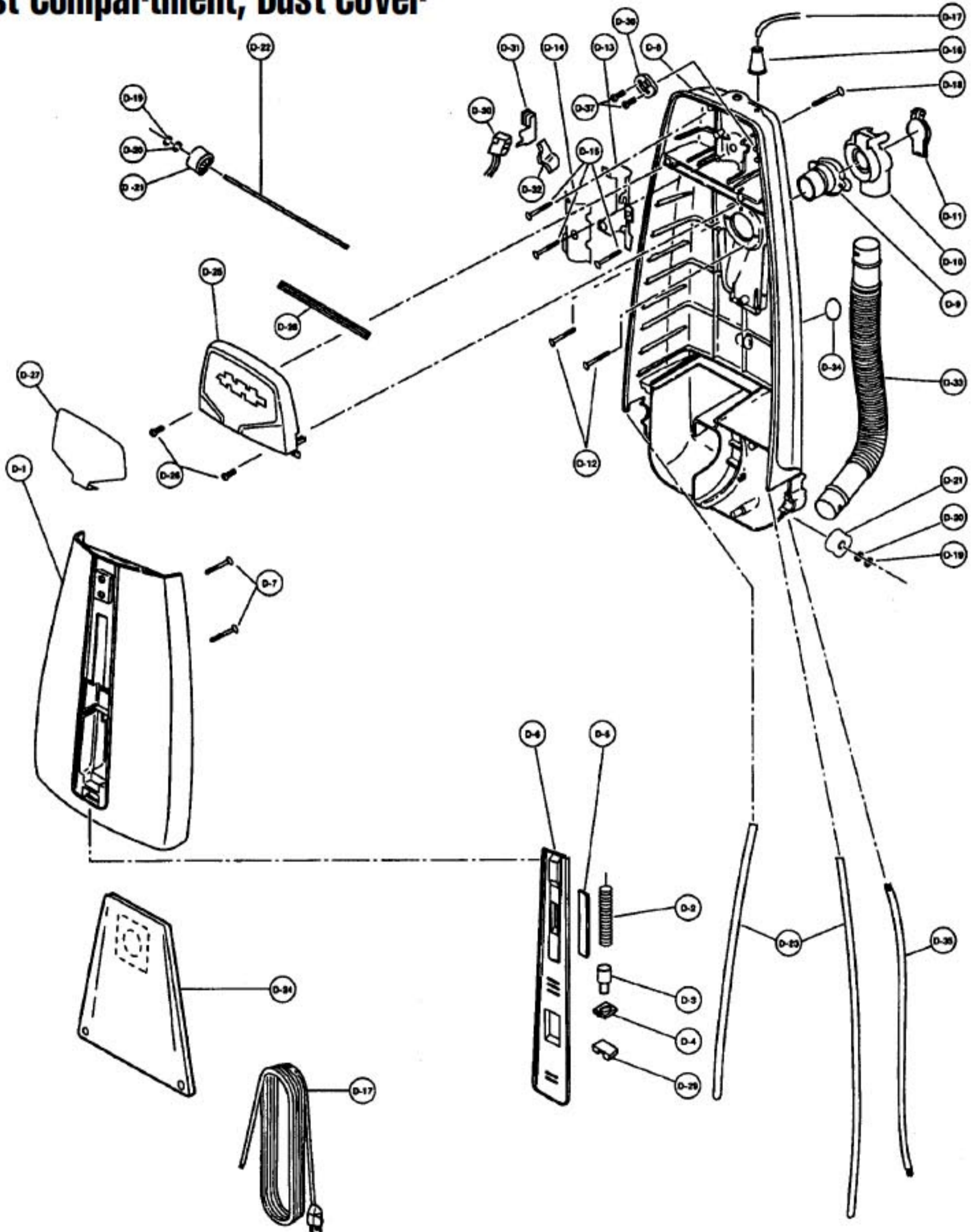


B1..... P-962..... Agitator Body Only, w/o ends
B2..... P-0693..... End Cap "A"
B3..... P-0694..... End Cap "B"
B4..... P-0030..... Washer



Models: MC-6217, MC-6250, MC-6255

## Dust Compartment, Dust Cover



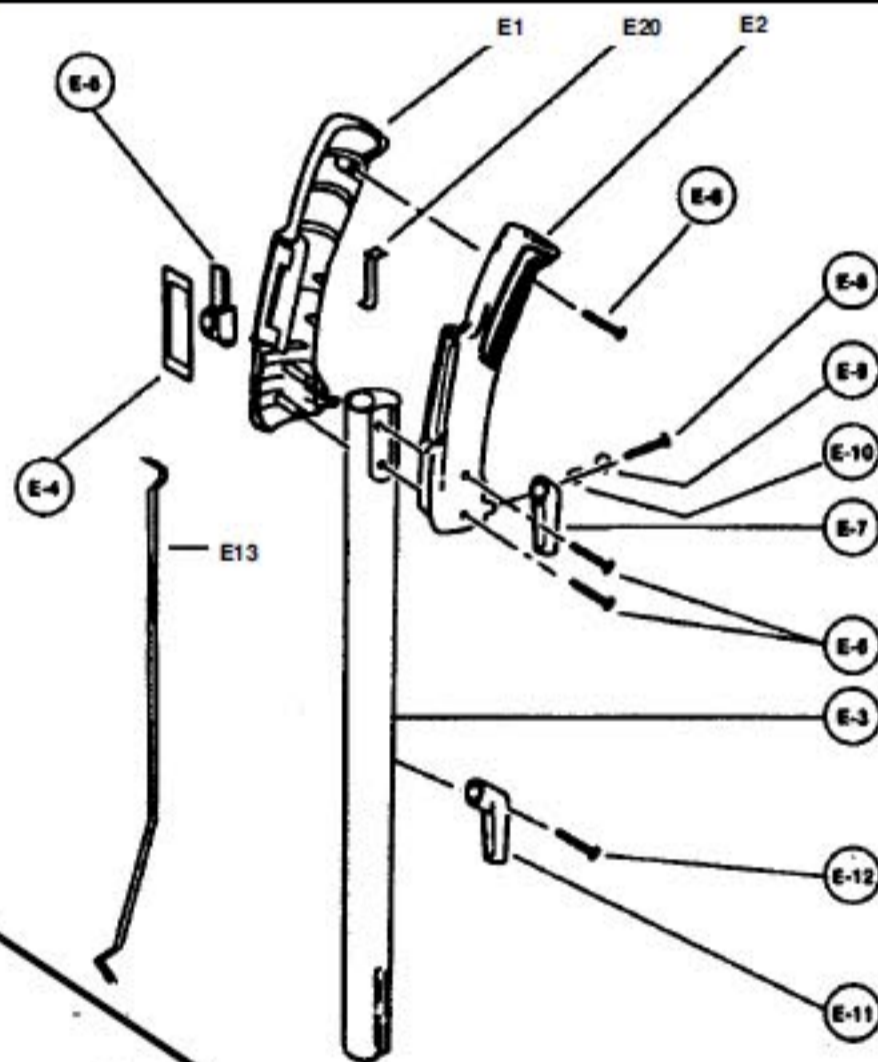


Models: MC-6217, MC-6250, MC-6255

D1 ..... P-60403 ..... Dust Cover, 6217	D12 .... N/A ..... Screw	D25 .... P-0065 ..... Switch Cover, 6255
D1 ..... P-0046 ..... Dust Cover, 6250	D13 .... P-2485 ..... Handle Supporter	D26 .... P-000132 ..... Screw, switch cover
D1 ..... P-0047 ..... Dust Cover, 6255	D14 .... P-2486 ..... Handle Fitting	D27 .... P-0219 ..... Ornamental Plate, 6217
D2 ..... P-0430 ..... Spring, indicator	D15 .... P-000132 ..... Screw	D27 .... P-0066 ..... Ornamental Plate, 6250
D3 ..... P-0049 ..... Lead, indicator	D16 .... P-2482 ..... Cord Bushing, 6250	D27 .... P-0067 ..... Ornamental Plate, 6255
D4 ..... P-203 ..... Supporter, indicator lead	D16 .... P-2481 ..... Cord Bushing, 6255	D28 .... P-0068 ..... Packing, switch cover
D5 ..... P-0830 ..... Window, indicator	D17 .... N/A ..... Cord, 6217	D29 .... P-0069 ..... Packing, indicator
P-0630 ..... Lever, alarm switch, 6217	D17 .... P-0059 ..... Cord, 6250	D30 .... P-987 ..... Main Switch, 6217
D6 ..... P-0147 ..... Front Cover, 6217	D17 .... P-0060 ..... Cord, 6255	D30 .... P-0070 ..... Main Switch
D6 ..... P-0050 ..... Front Cover, 6250	D18 .... P-7330 ..... Screw, handle	D31 .... P-453 ..... Terminal Cover, 6217
D6 ..... P-0051 ..... Front Cover, 6255	D19 .... N/A ..... E-Clip	D31 .... P-0071 ..... Terminal Cover
D7 ..... P-000132 ..... Screw	D20 .... N/A ..... Washer	D32 .... P-153 ..... Switch Lever
D8 ..... P-4034 ..... Dust Compartment, 6217	D21 .... P-0062 ..... Roller, (wheel), 6250	D33 .... P-3433 ..... Nozzle Hose, 6217
D8 ..... N/A ..... Dust Compartment, 6250	D21 .... P-0107 ..... Roller, (wheel), 6255	D33 .... P-0072 ..... Nozzle Hose, 6250
D8 ..... P-0053 ..... Dust Compartment, 6255	D22 .... P-163 ..... Shaft, roller	D33 .... P-0073 ..... Nozzle Hose, 6255
D9 ..... P-1034 ..... Packing, suction inlet	D23 .... P-2488 ..... Packing, dust box	D34 .... P-2497 ..... Sticker, warning
D10 .... N/A ..... Suction Inlet, 6217	D24 .... P-115P ..... Paper Bag, type "U", 3 pack	D34 .... P-0570 ..... Sticker, 6217
D10 .... P-0054 ..... Suction Inlet, 6250	D24 .... P-115PT ..... Paper Bag, type "U", 12 pack	D35 .... P-0074 ..... Wire Cord
D10 .... P-0055 ..... Suction Inlet, 6255	D24 .... 253 ..... Paper Bag, type "U", 3 pack (R)	D36 .... N/A ..... Cord Stopper
D-11 .... N/A ..... Cover, 6217	D24 .... 253-12 ..... Paper Bag, type "U", 12 pack (R)	D37 .... P-000132 ..... Screw
D11 .... P-0056 ..... Cover, 6250	D25 .... P-39 ..... Switch Cover, 6217	
D11 .... P-0057 ..... Cover, 6255	D25 .... P-0064 ..... Switch Cover, 6250	

## Handle Assembly

E1 ..... P-0075 ..... Handle Grip, right, 6250
E1 ..... P-2233 ..... Handle Grip, right, 6217, 6255
E2 ..... P-0076 ..... Handle Grip, left, 6250
E2 ..... P-2332 ..... Handle Grip, left, 6217, 6255
E3 ..... P-6414 ..... Handle, 6217
E3 ..... P-0077 ..... Handle, 6250
E3 ..... P-0078 ..... Handle, 6255
E4 ..... N/A ..... Window, switch
E5 ..... P-6931 ..... Switch Knob
E6 ..... P-4201 ..... Screw
E7 ..... P-0079 ..... Cord Hook, upper, 6250
E7 ..... P-2548 ..... Cord Hook, upper, 6217, 6255
E8 ..... P-4201 ..... Screw
E9 ..... P-587 ..... Washer, handle
E10 .... P-7670 ..... Spring, cord hook
E11 .... P-0080 ..... Cord Hook, lower, 6250
E11 .... P-2552 ..... Cord Hook, lower, 6217, 6255
E12 .... P-4201 ..... Screw
E13 .... P-623 ..... Handle Lever



## Motor Housing

C1 ..... P-0031 ..... Motor Case, 6250
C1 ..... P-0032 ..... Motor Case, 6255
C2 ..... P-0232 ..... Packing, rear cover, 6217
C2 ..... P-2465 ..... Packing, rear cover
C3 ..... P-2466 ..... Support Rubber, motor case, 6217
C3 ..... P-0033 ..... Support Rubber, motor case
C4 ..... P-3200 ..... Supporter, filter
C5 ..... P-2463 ..... Filter, 6217
C5 ..... P-3030 ..... Filter
C6 ..... P-000062 ..... Motor, complete
C7 ..... P-272 ..... Carbon Brush, set, 6217
C7 ..... P-0035 ..... Carbon Brush, set
C8 ..... P-0036 ..... Brush Bracket
C9 ..... P-0037 ..... Screw, bracket
C10 .... P-24 ..... Motor Support Rubber, front
C11 .... P-0300 ..... Motor Support Rubber, rear
C12 .... P-9920 ..... Noise Suppressor
C13 .... SS-71B ..... Wire Nut, 100 pack (R)
C14 .... P-000132 ..... Screw
P-99303 ..... Spring, motor case, 6217
P-441 ..... Lead Wires, w/ AMP terminal, 6217

