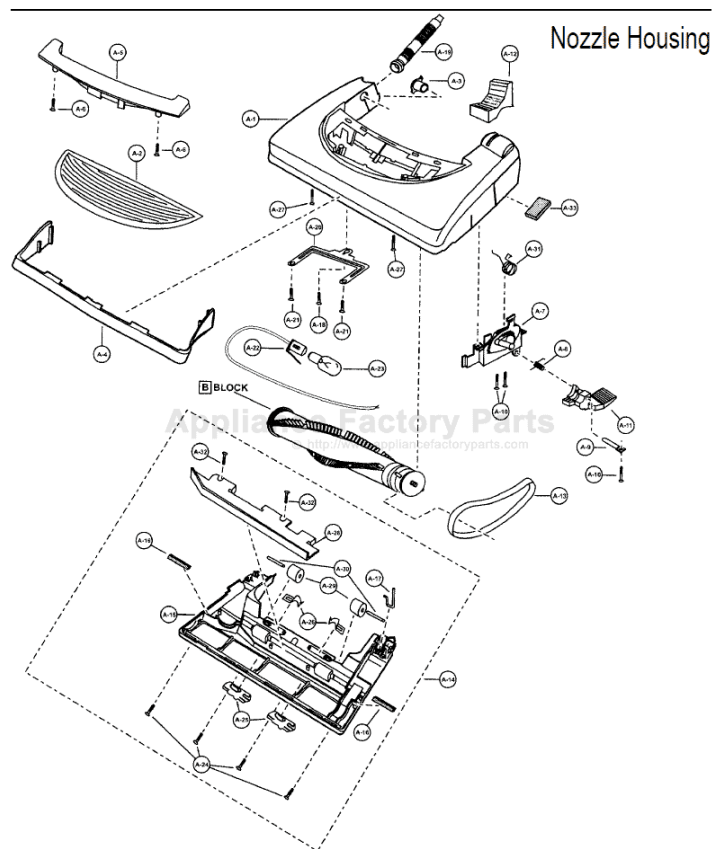


This Owner's Manual is provided and hosted by [Appliance Factory Parts](http://ApplianceFactoryParts.com).



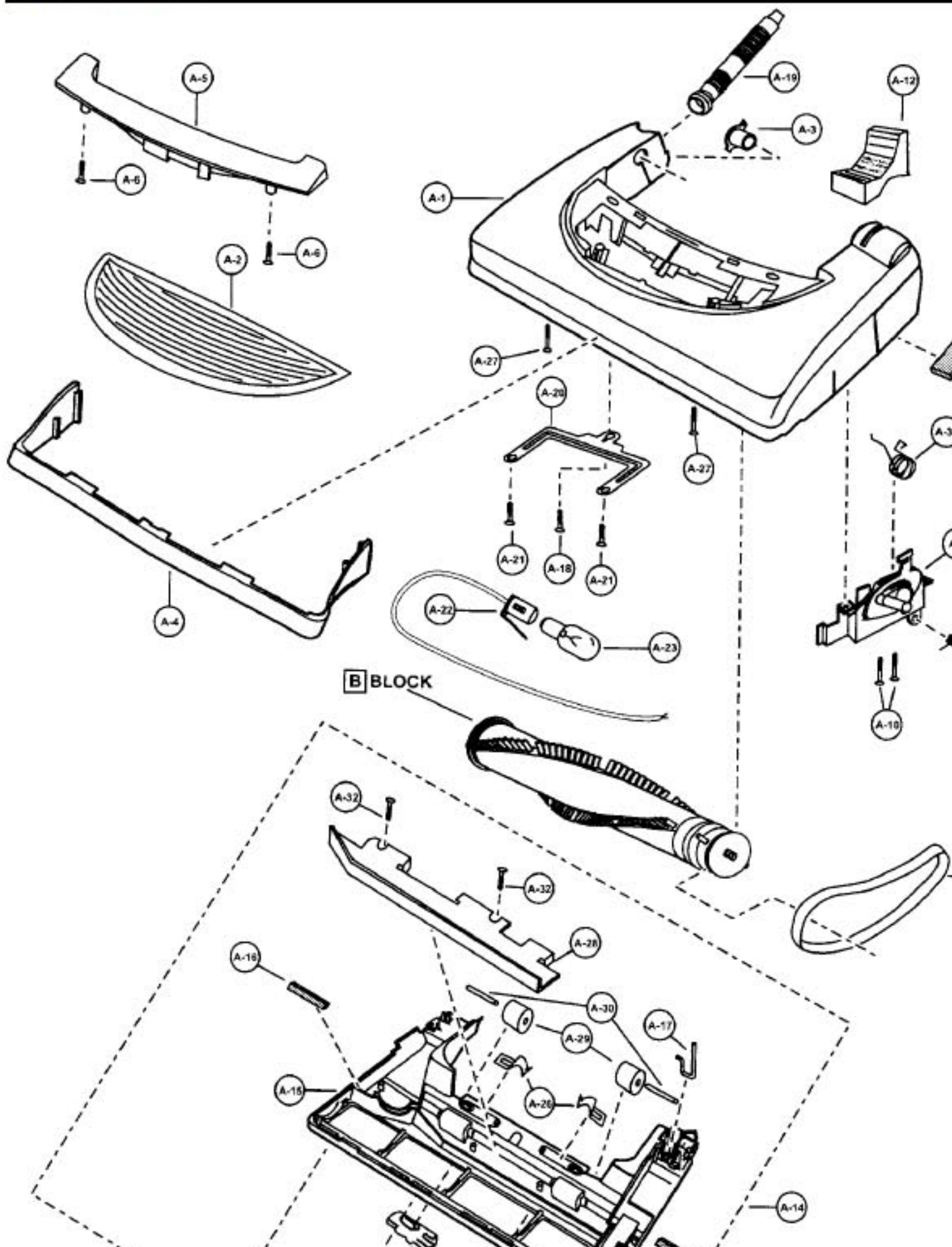
PANASONIC V7358 Owner's Manual

[Shop genuine replacement parts for PANASONIC V7358](#)



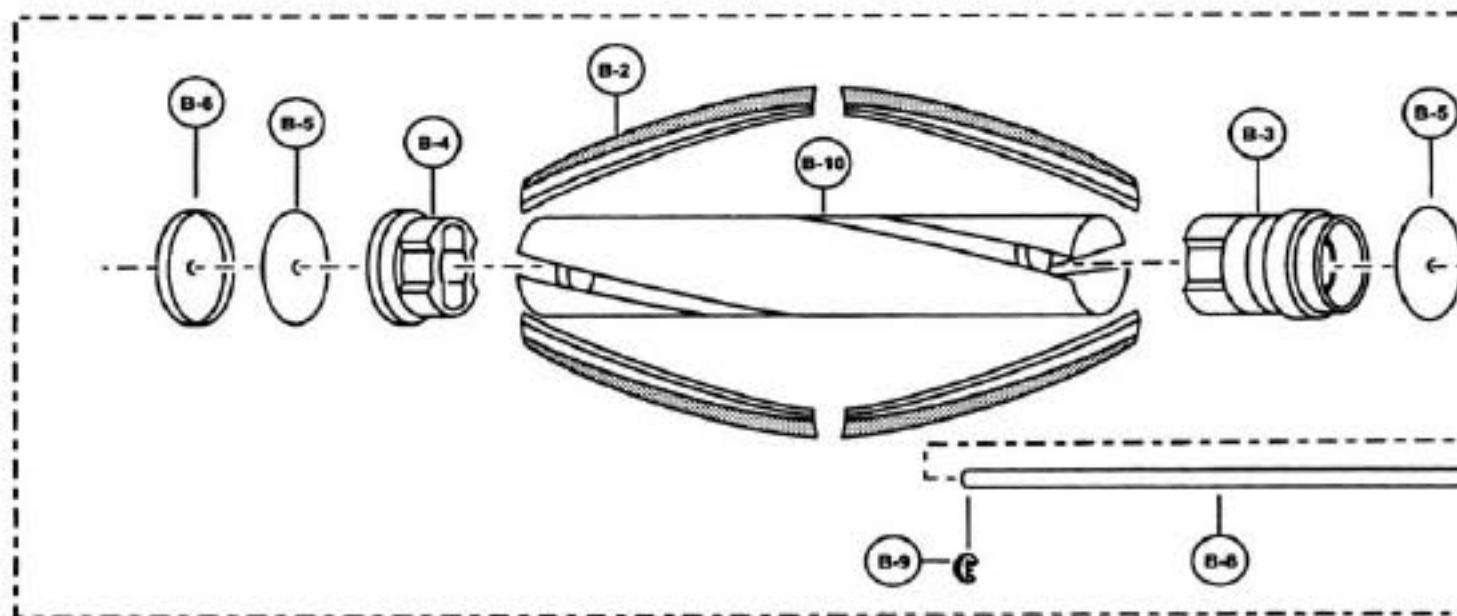
[Find Your PANASONIC Vacuum Cleaner Parts - Select From 605 Models](#)

----- Manual continues below -----



Models: MC-V7358

- | | | | | | |
|----|---------------|---|----|-------------|--------------------------------|
| 1 |P-111225 | Nozzle housing | 18 |P-6800 | Screw, slider support |
| 2 |P-9854 | Window | 19 |P-10304 | Nozzle hose |
| 3 |P-10819 | Shaft, plastic | 20 |P-10353 | Slider support |
| 4 |P-10351 | Furniture guard | 21 |P-6140 | Screw, slider support |
| 5 |P-10920 | Light cover | 22 |P-9367 | Socket, bulb |
| 6 |P-8172 | Screw (light cover) | 23 |P-7550 | Bulb |
| 7 |P-10733 | Carpet/bare floor - handle release assembly | 24 |P-98104 | Screw, metal lower plate |
| 8 |P-9857 | Spring (pedal) | 25 |P-2444 | Latch, lower plate |
| 9 |P-513 | Shaft (pedal) | 26 |P-9846 | Spring, stop latch |
| 10 |P-02181 | Screw (pedal/frame assembly) | 27 |P-683 | Screw, nozzle housing, f |
| 11 |P-4720 | Pedal, black | 28 |P-9766 | Body, lower plate |
| 12 |P-9880 | Foot pedal cover | 29 |P-9888 | Wheel |
| 13 |P-00181 | Belt | 30 |P-10357 | Shaft, wheel |
| 14 |P-10672 | Lower plate assembly | 31 |P-02184 | Spring, shifter return |
| 15 |P-10681 | Lower plate | 32 |P-6140 | Screw (body, lower plate |
| 16 |P-10394 | Packing (lower plate/body, lower plate) | 33 |P-98103 | Packing (nozzle) |
| 17 |P-9861 | Belt cover | | | |

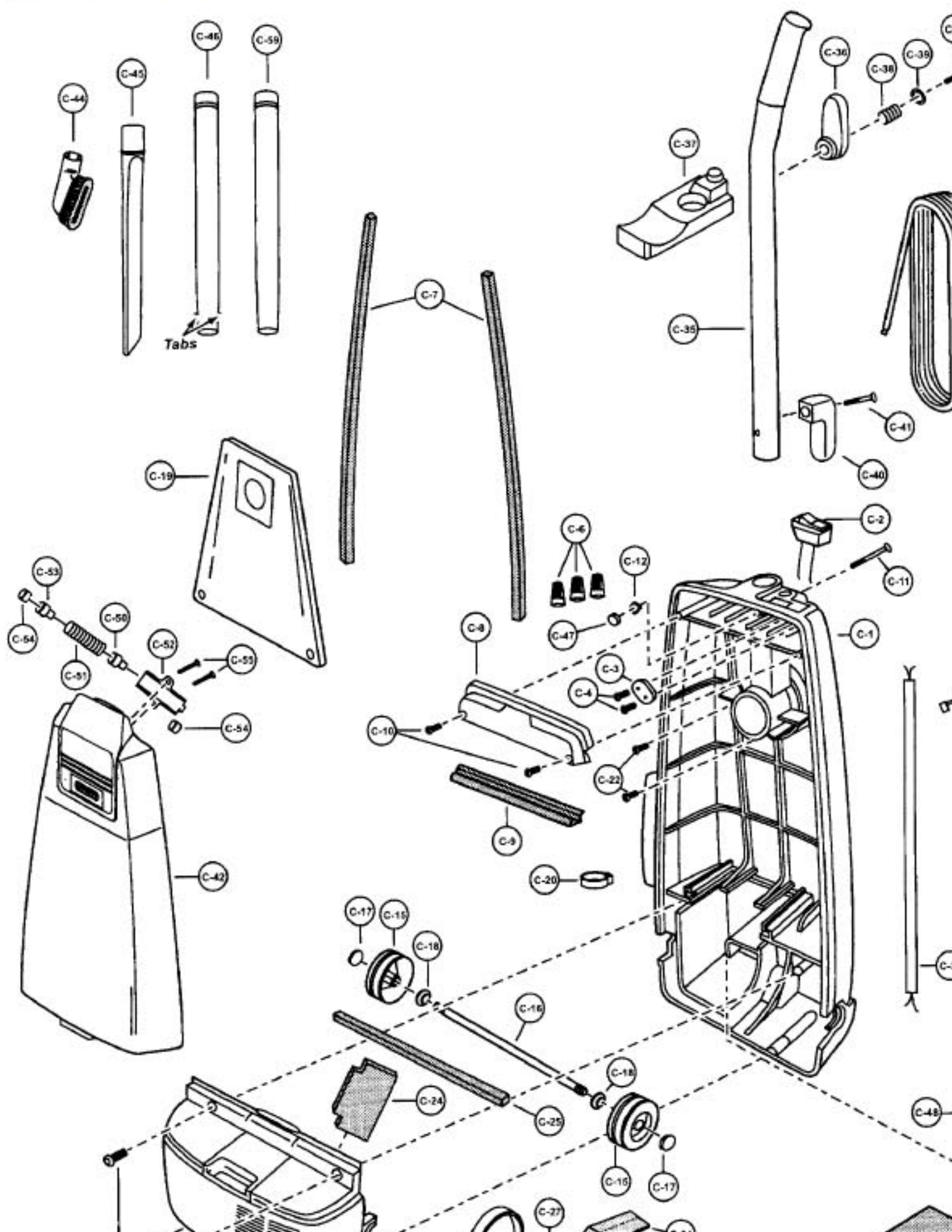


- | | | |
|----|--------------|-------------------------|
| 1 |P-10682 | Agitator Assembly |
| 2 |P-10375 | Brush (4 pcs) |
| 3 |P-10683 | Agitator pulley |
| 4 |P-10801 | Agitator holder |
| 5 |P-10376 | Filter |
| 6 |P-9709 | End cap, right |
| 7 |P-9708 | End cap, left |
| 8 |P-10684 | Agitator shaft |
| 9 |P-4003 | E-clip |
| 10 |P-8403 | Brush holder |

PANASONIC

V

Models: MC-V7358



Models: MC-V7358

- 1.....P-10836..... Dust compartment unit
- 2.....P-8913..... On-off switch
- 3.....P-0698..... Cord stopper
- 4.....P-6140..... Screw (cord stopper)
- 5.....P-10802..... Power cord
- 6.....P-000623... Wire connector
- 7.....P-660106... Packing, dust container
- 8.....P-30606..... Switch cover
- 9.....P-73006..... Packing, switch cover
- 10....P-6140..... Screw, switch cover
- 11....P-7301..... Handle screw
- 12....P-2117..... Nut, handle screw
- 13....P-3200..... Filter supporter
- 14....P-9994..... Secondary filter
- 15....P-0114..... Wheel
- 16....P-10698..... Shaft wheel
- 17....P-74009..... Stopper wheel
- 18....P-6115..... Washer
- 19....P-10969..... Dust bag (type u6)
- 20....P-10340..... Hose hook
- 21....P-8972..... cover, suction inlet
- 22....P-6140..... Screw, suction inlet
- 23....P-11216..... Motor case
- 24....P-201..... packing, rear cover
- 25....P-1906..... Packing, motor case
- 26....P-8172..... Screw, motor case
- 27....P-10933..... Fan motor unit
- 28....P-8182..... Carbon brush
- 29....P-9823..... Screw, brush (not illustrated)
- 30....P-10670..... Noise suppressor
- 31....P-111226... Motor support, front
- 32....P-9911..... Motor support rubber, rear
- 33....P-3820..... Wire cord
- 34....P-000623... Wire connector
- 35....P-111227... Handle
- 36....P-53007..... Upper cord storage hook
- 37....P-9837..... Hose holder
- 38....P-7670..... Spring, cord hook
- 39....P-587..... Washer, cord storage hook
- 40....P-9838..... Lower cord storage hook
- 41....P-43096..... Screw, cord storage hook
- 42....P-10927..... Dust cover
- 43....P-8946..... Hose
- 44....P-6088..... Dusting brush
- 45....P-10805..... crevice tool
- 46....P-10781..... Wand, with tabs
- 47....P-6106..... Packing, insulator
- 48....P-10697..... Packing, right
- 49....P-10698..... Packing, left
- 50....P-10674..... Lead, indicator
- 51....P-10400..... Spring, indicator
- 52....P-98109..... Body, indicator
- 53....P-000147... Cap, indicator
- 54....P-9300..... Packing, indicator
- 55....P-4104..... Screw, indicator
- 56....P-8184..... Ring spacer
- 57....P-10712..... Lead wire, motor