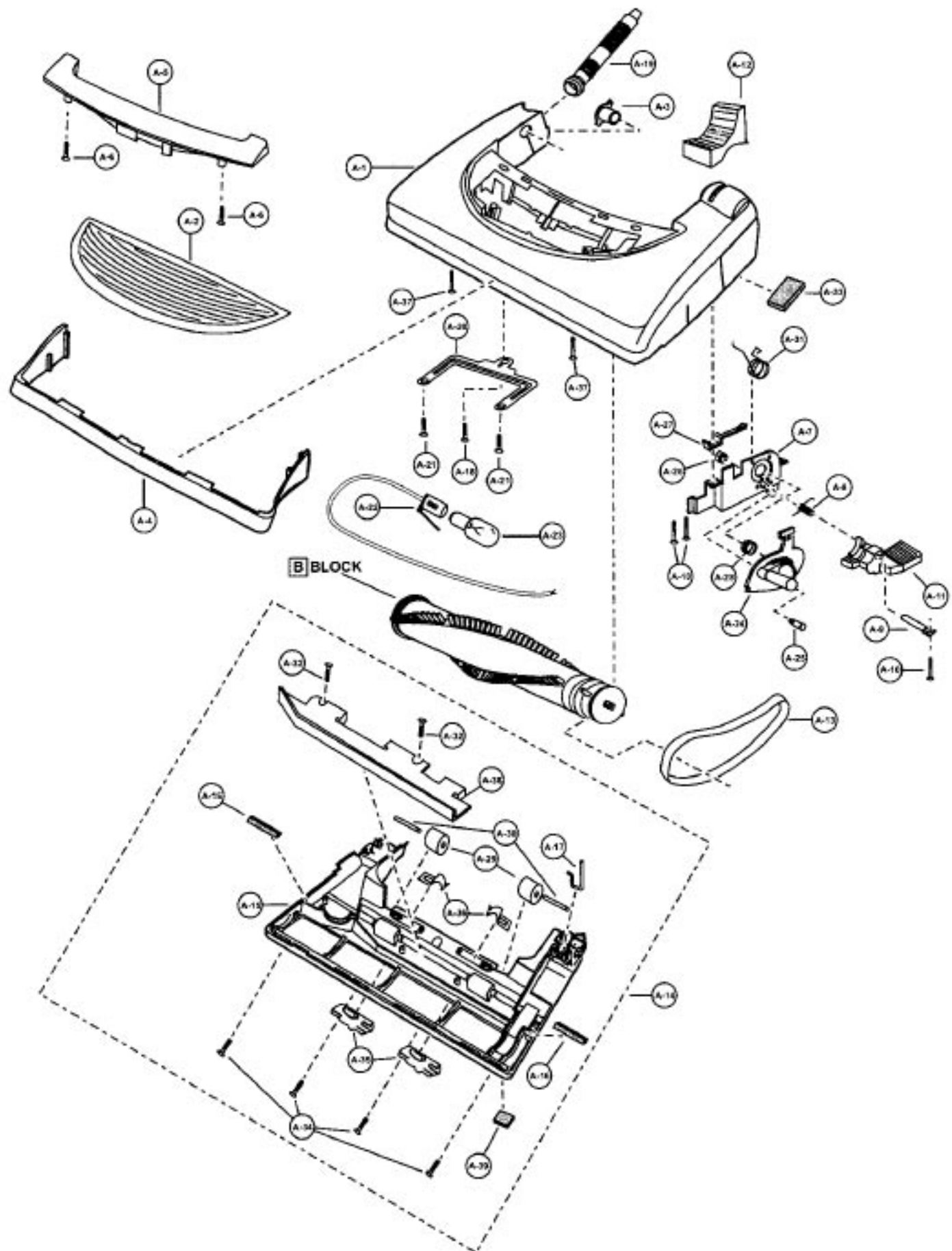


Models: MC-V7368

Nozzle Housing

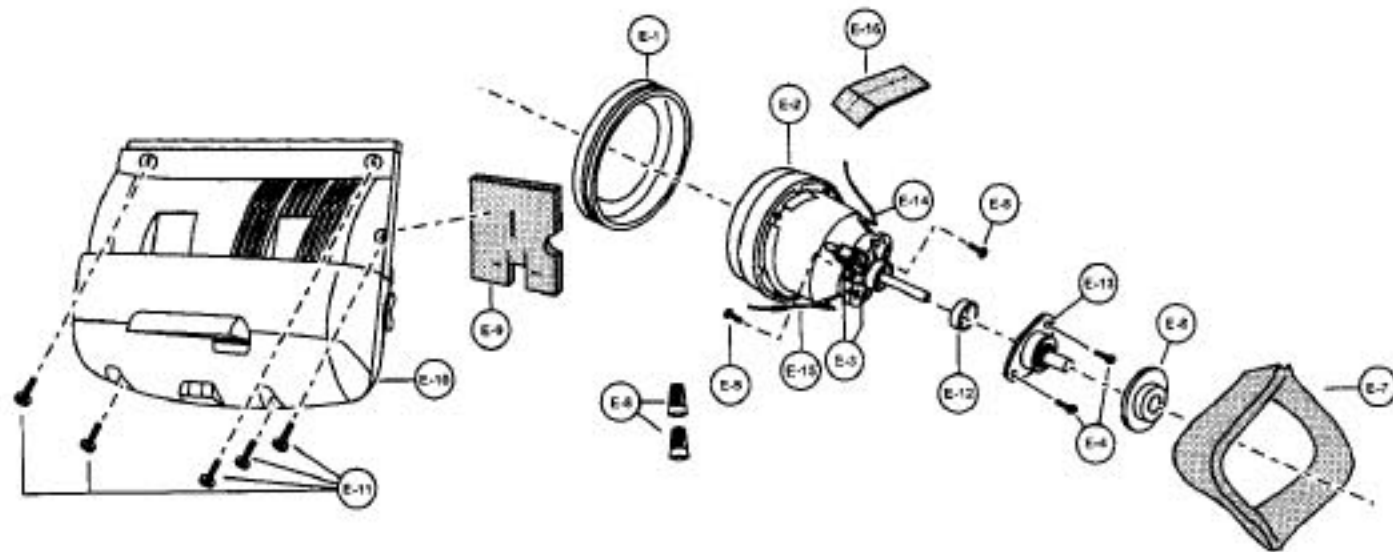
1	P-10919	Nozzle housing
2	P-9854	Window
3	P-10819	Shaft, plastic
4	P-10351	Furniture guard
5	P-10920	Light cover
6	P-8172	Screw, light cover
7	P-111251	Frame
8	P-9857	Spring, pedal
9	P-513	Shaft, pedal
10	P-02181	Screw, pedal/frame assembly
11	P-4720	Pedal, black
12	P-9880	Foot pedal cover
13	P-00181	Belt, flat
14	P-10672	Lower plate assembly
15	P-10681	Lower plate
16	P-10394	Packing, lower plate/body, lower plate
17	P-9861	Belt cover
18	P-6800	Screw, slider support
19	P-9862	Nozzle house
20	P-10353	Slider support
21	P-6140	Screw, slider support
22	P-7550	Bulb
23	P-111252	Pedal gear assembly
24	P-111252	Pedal gear assembly
25	P-9884	Shoulder screw
26	P-9885	Nut/lock washer
27	P-02183	Spring, foot gear assembly
28	P-9887	Spring, pedal gear assembly
29	P-9888	Wheel
30	P-10357	Shaft, wheel
31	P-02184	Spring, shifter return
32	P-6140	Screw, body/lower plate
33	P-98103	Packing, nozzle
34	P-98104	Screw, metal lower plate
35	P-2444	Latch, lower plate
36	P-9846	Spring, stop latch
37	P-683	Screw, nozzle housing, for latch
38	P-9766	Body, lower plate
39	P-10715	Packing, dirt guard



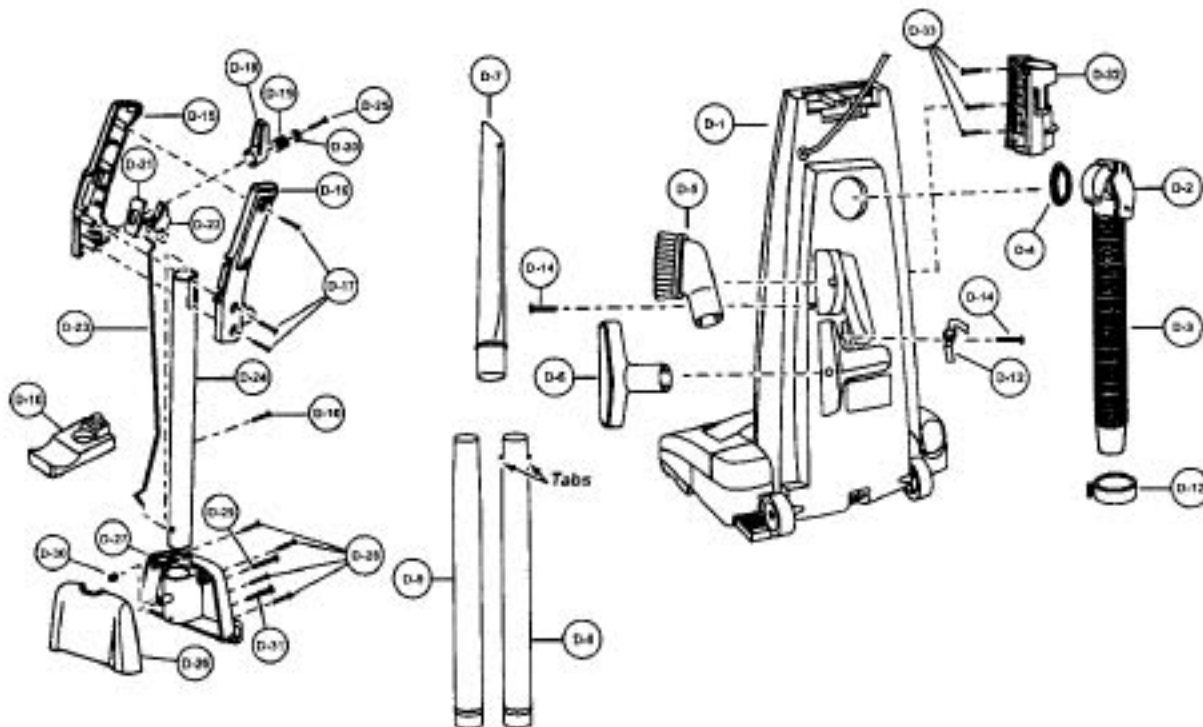
Models: MC-V7368

Motor Case and Motor

- | | | |
|---------|---------------|------------------------------|
| 1..... | P-0293..... | Motor support rubber, front |
| 2..... | P-10933..... | Fan motor unit |
| 3..... | P-8182..... | Carbon brush assembly |
| 4..... | P-10690..... | Screw, flange |
| 5..... | P-9823..... | Screw, carbon brush assembly |
| 6..... | P-9911..... | Motor support rubber, rear |
| 7..... | P-10670..... | Noise suppressor |
| 8..... | P-000623..... | Wire connector |
| 9..... | P-9874..... | Packing, rear cover |
| 10..... | P-10934..... | Motor case |
| 11..... | P-8172..... | Screw, motor case |
| 12..... | P-8184..... | Ring spacer |
| 13..... | P-9960..... | Flange |
| 14..... | P-10712..... | Lead wire |
| 15..... | P-10688..... | Lead wire assembly |
| 16..... | P-10649..... | Coling guide |



Handle Assembly and Rear Dust Compartment

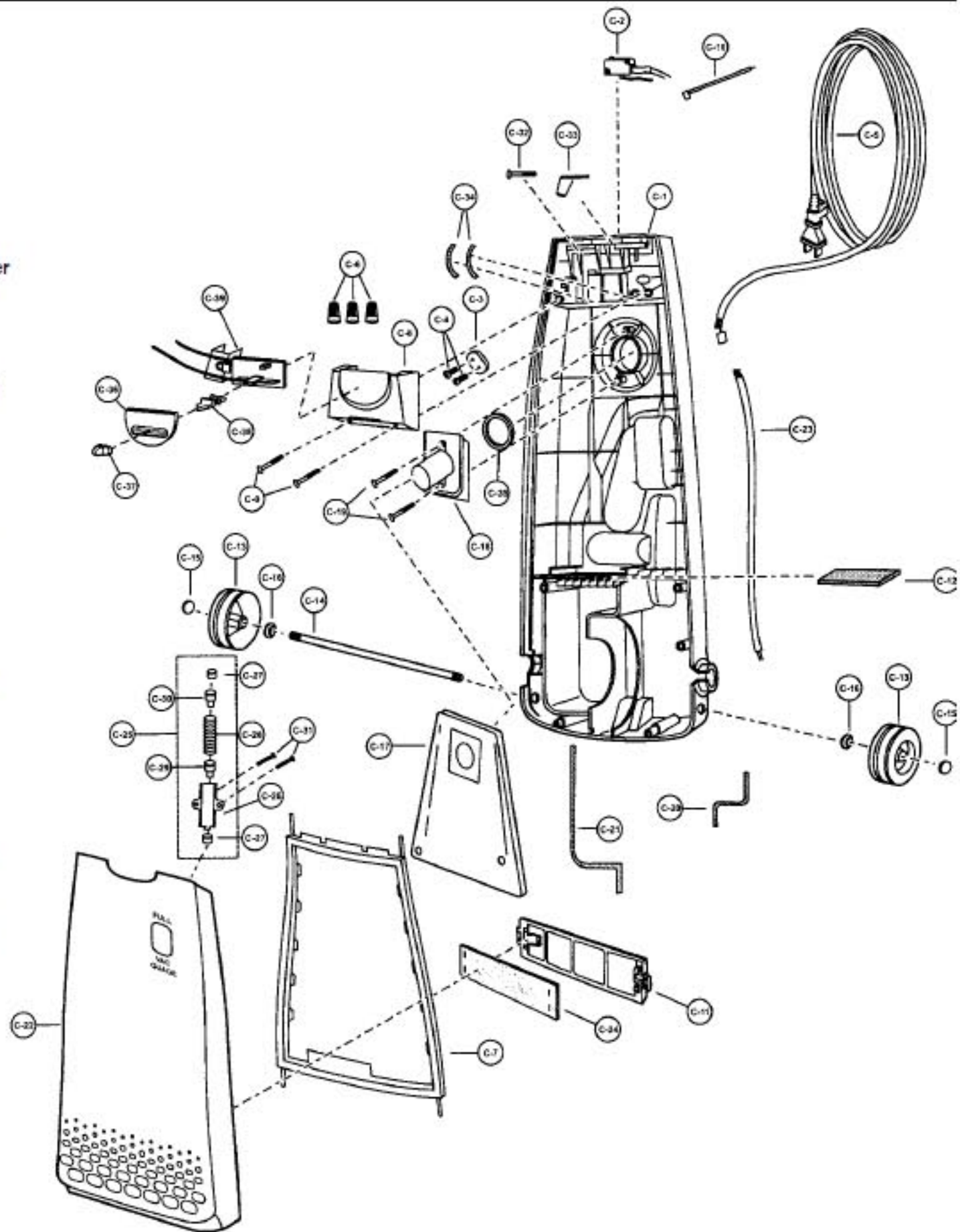


- | | | | | | |
|---------|--------------|------------------------|---------|--------------|------------------------|
| 1..... | P-40507..... | Dust compartment | 18..... | P-9819..... | Upper cord hook |
| 2..... | P-8972..... | Cover, suction inlet | 19..... | P-7670..... | Spring, cord hook |
| 3..... | P-10436..... | Hose | 20..... | P-587..... | Washer, cord hook |
| 4..... | P-10512..... | Packing, suction inlet | 21..... | P-9820..... | Window, switch |
| 5..... | P-6088..... | Dusting brush | 22..... | P-9821..... | knob, switch |
| 6..... | P-6620..... | Upholstery tool | 23..... | P-7554..... | Lever, handle |
| 7..... | P-10805..... | Crevice tool | 24..... | P-10404..... | Handle |
| 8..... | P-10781..... | Wand, with tabs | 25..... | P-8172..... | Screw, cord hook |
| 9..... | P-60104..... | Extension wand | 26..... | P-10932..... | Handle cover, front |
| 10..... | P-10403..... | Hose holder | 27..... | P-8934..... | Handle cover, rear |
| 11..... | P-10449..... | Screw, hose holder | 28..... | P-8172..... | Screw, handle cover |
| 12..... | P-9873..... | Hose ring | 29..... | P-7301..... | Screw, handle |
| 13..... | P-9897..... | Holder, dusting brush | 30..... | P-2117..... | Nut, handle screw |
| 14..... | P-6140..... | Screw | 31..... | P-9907..... | Screw, handle assembly |
| 15..... | P-9817..... | Handle grip, right | 32..... | P-5465..... | Wand holder |
| 16..... | P-9818..... | Handle grip, left | 33..... | P-6140..... | Screw, wand holder |
| 17..... | P-8172..... | Screw, handle grip | | | |

Models: MC-V7368

Body

- | | | |
|----|-----------|----------------------------|
| 1 | P-40507 | Dust compartment |
| 2 | P-0696 | On-off switch |
| 3 | P-0698 | Cord stopper |
| 4 | P-6140 | Screw, cord-stopper |
| 5 | P-10717 | Power cord |
| 6 | P-000623 | Wire connector |
| 7 | P-10925 | Packing, dust container |
| 8 | P-10926 | Switch cover |
| 9 | P-6140 | Screw, switch cover |
| 10 | P-9892 | Lead wire, black |
| 11 | P-9893 | Filter supporter |
| 12 | P-7023 | Secondary filter, foam |
| 13 | P-0114 | Wheel |
| 14 | P-16005 | Shaft, wheel |
| 15 | P-74009 | Stopper, wheel |
| 16 | P-6115 | Washer, wheel |
| 17 | P-145M | Dust bag, type U6 |
| 18 | P-10358 | Bag supporter |
| 19 | P-6140 | Screw, bag supporter |
| 20 | P-10697 | Packing, right |
| 21 | P-10698 | Packing, left |
| 22 | P-10927 | Dust cover |
| 23 | P-3820 | Wire cord |
| 24 | P-10928 | Exhaust filter, HEPA |
| 25 | P-10718 | Indicator assembly |
| 26 | P-98109 | Body, indicator |
| 27 | P-9300 | Packing, indicator |
| 28 | P-10400 | Spring, indicator |
| 29 | P-000149 | Lead, indicator |
| 30 | P-000147 | Cap, indicator |
| 31 | P-4104 | Screw, indicator |
| 32 | P-6800 | Screw, on-off switch |
| 33 | P-0701 | Switch lever |
| 34 | P-811105 | Tight packing |
| 35 | P-10719 | Packing, suction inlet |
| 36 | P-MCV193H | Ornamental plate |
| 37 | P-10929 | Button |
| 38 | P-10930 | Slider |
| 39 | P-10931 | PCB assembly with heatsink |



Agitator Assembly

- | | | |
|----|---------|-------------------|
| 1 | P-10922 | Agitator Assembly |
| 2 | P-10915 | Brush, 4 pcs. |
| 3 | P-10683 | Agitator pulley |
| 4 | P-10923 | Agitator holder |
| 5 | P-10376 | Filter |
| 6 | P-9709 | End cap, right |
| 7 | P-9708 | End cap, left |
| 8 | P-10684 | Agitator shaft |
| 9 | P-10924 | Bearing |
| 10 | P-4003 | E-clip |
| 11 | P-10378 | Spring pin |
| 12 | P-10716 | Spacer |

