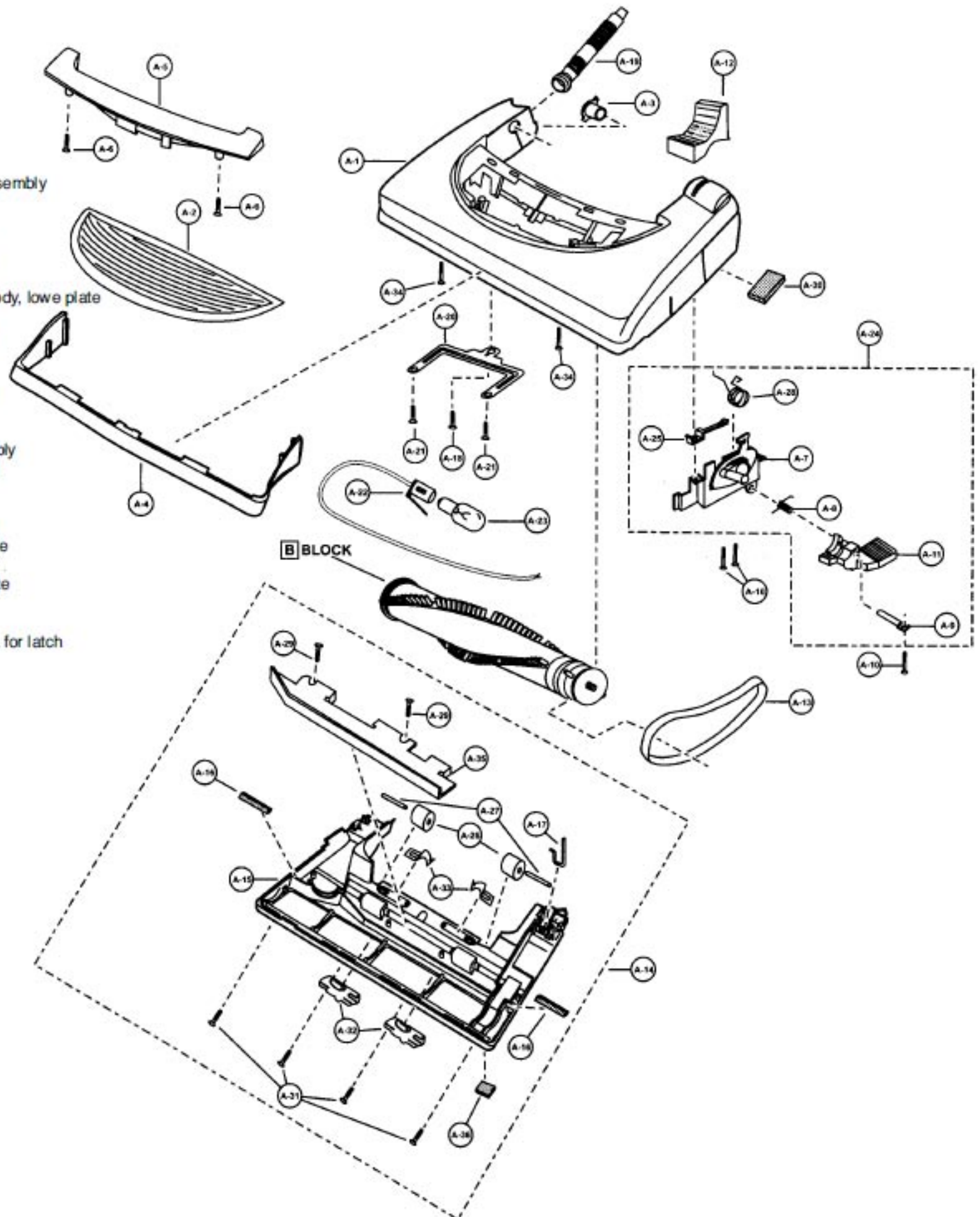


Models: MC-V7388

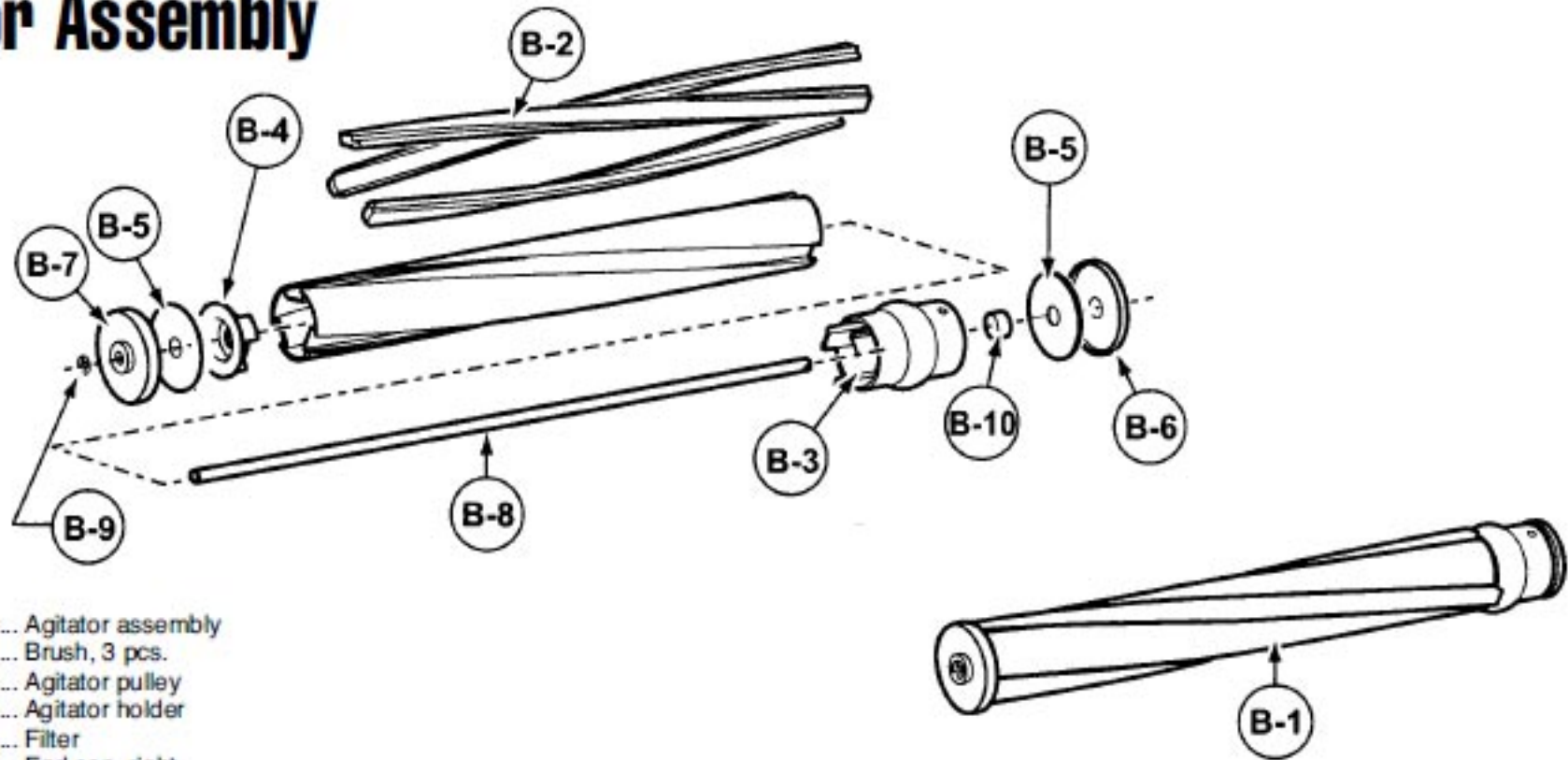
Nozzle Housing

- 1 ... P-111441 Nozzle housing
- 2 ... P-9854 Window
- 3 ... P-10819 Shaft, plastic
- 4 ... P-10351 Furniture guard
- 5 ... P-10920 Light cover
- 6 ... P-8172 screw, light cover
- 7 ... P-111251 Bracket assembly
- 8 ... P-9857 Spring, pedal
- 9 ... P-513 Shaft, pedal
- 10 ... P-000132 Screw, pedal/frame assembly
- 11 ... P-4720 Pedal, black
- 12 ... P-10835 Foot pedal cover
- 13 ... P-10599 Belt, flat
- 14 ... P-10672 Lower plate assembly
- 15 ... P-10681 Lower plate
- 16 ... P-10394 Packing, lower plate/body, lower plate
- 17 ... P-9861 Belt cover
- 18 ... P-6800 Screw, slider support
- 19 ... P-10304 Nozzle hose
- 20 ... P-10353 Slider support
- 21 ... P-0001322 ... Screw, slider support
- 22 ... P-11103 Socket, bulb
- 23 ... P-7550 bulb
- 24 ... P-10733 Handle release assembly
- 25 ... P-9886 Spring, foot gear pedal
- 26 ... P-9888 Wheel
- 27 ... P-10968 Shaft, wheel
- 28 ... P-02184 Spring, shifter return
- 29 ... P-6140 Screw, body, lower plate
- 30 ... P-98103 Packing, nozzle
- 31 ... P-98104 Screw, metal lower plate
- 32 ... P-2444 Latch
- 33 ... P-9846 Spring, stop latch
- 34 ... P-683 Screw, nozzle housing, for latch
- 35 ... P-9766 Body, lower plate
- 36 ... P-10715 Packing dirt guard



Models: MC-V7388

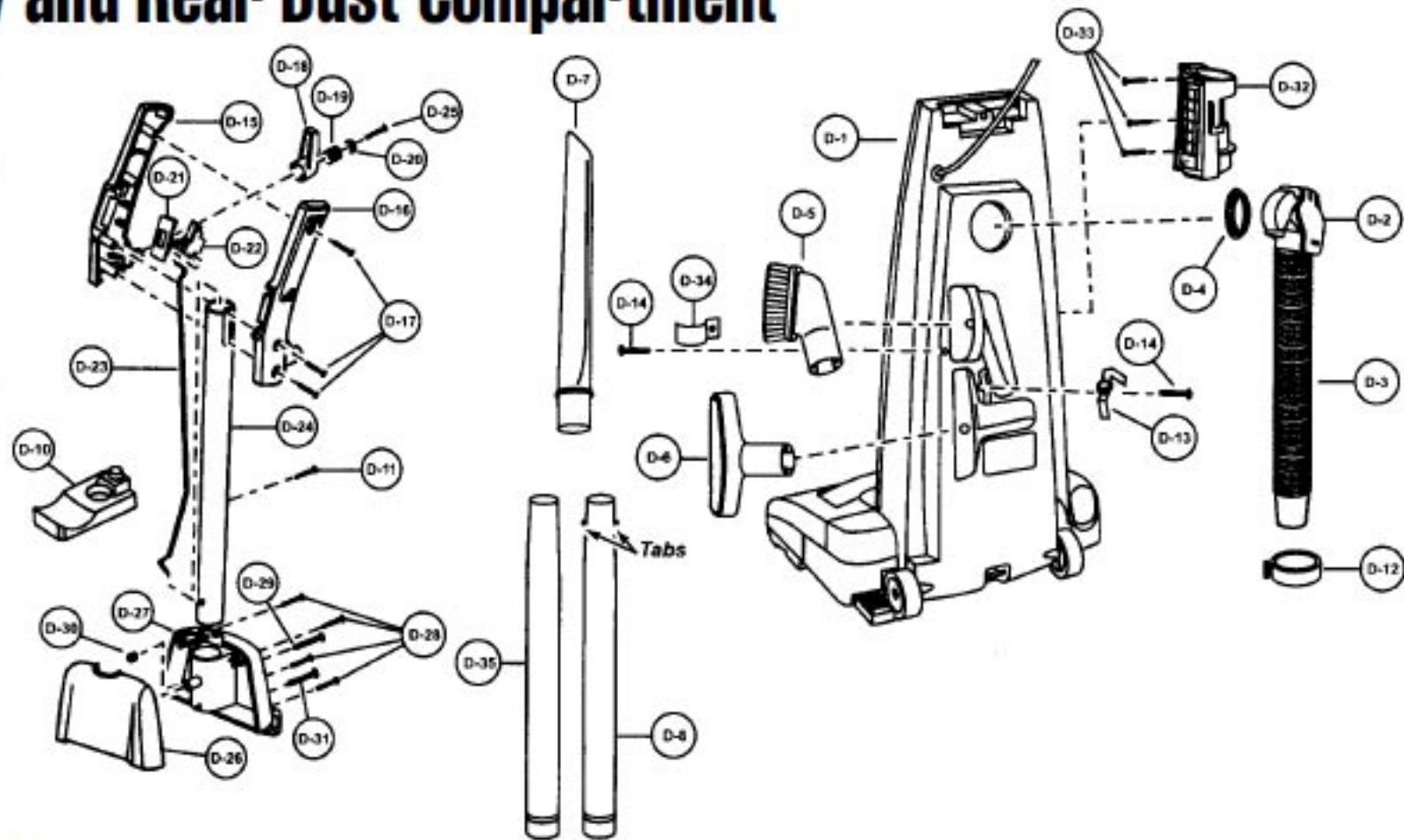
Agitator Assembly



- 1 P-111441 Agitator assembly
- 2 P-111463 Brush, 3 pcs.
- 3 P-111464 Agitator pulley
- 4 P-10801 Agitator holder
- 5 P-10376 Filter
- 6 P-9709 End cap, right
- 7 P-9708 End cap, left
- 8 P-5701 Agitator shaft
- 9 P-111465 Ring clip
- 10 P-111466 Spacer

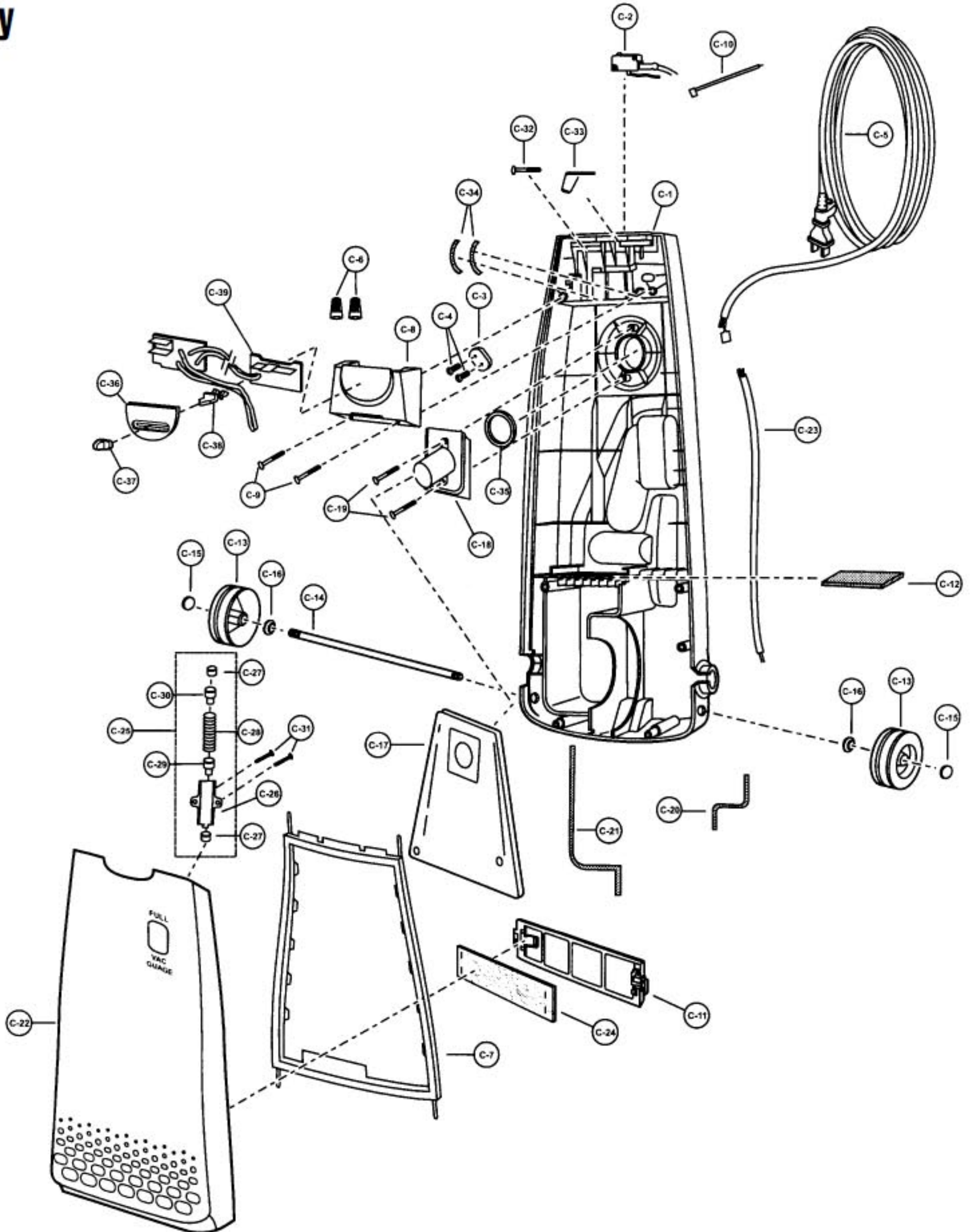
Handle Assembly and Rear Dust Compartment

- 1 P-111445 Dust compartment
- 2 P-8972 Cover, suction inlet
- 3 P-10436 Hose
- 4 P-10512 Packing, suction inlet
- 5 P-6088 Dusting brush
- 6 P-6620 Upholstery tool
- 7 P-6069 Crevice tool
- 8 P-8180 Wand, with tabs
- 10 P-10403 Hose holder
- 11 P-10449 Screw, hose holder
- 12 P-9873 Hose ring
- 13 P-9897 Holder dusting brush
- 14 P-6140 Screw
- 15 P-9817 Handle grip, right
- 16 P-9818 Handle grip, left
- 17 P-8172 Screw, handle grip
- 18 P-9819 Upper cord hook
- 19 P-7670 Spring, cord hook
- 20 P-587 Washer, cord hook
- 21 P-9820 Window, switch
- 22 P-9821 Knob, switch
- 23 P-7554 Lever, handle
- 24 P-10404 handle
- 25 P-8172 Screw, cord hook
- 26 P-10932 handle cover, front
- 27 P-8934 handle cover, rear
- 28 P-8172 Screw, handle cover
- 29 P-7301 Screw, handle
- 30 P-2117 Nut, handle screw
- 31 P-9907 Screw, handle assembly
- 32 P-111459 Wand holder
- 33 P-6140 Screw, wand holder
- 34 P-7070 Extension wand holder



Models: MC-V7388

Body

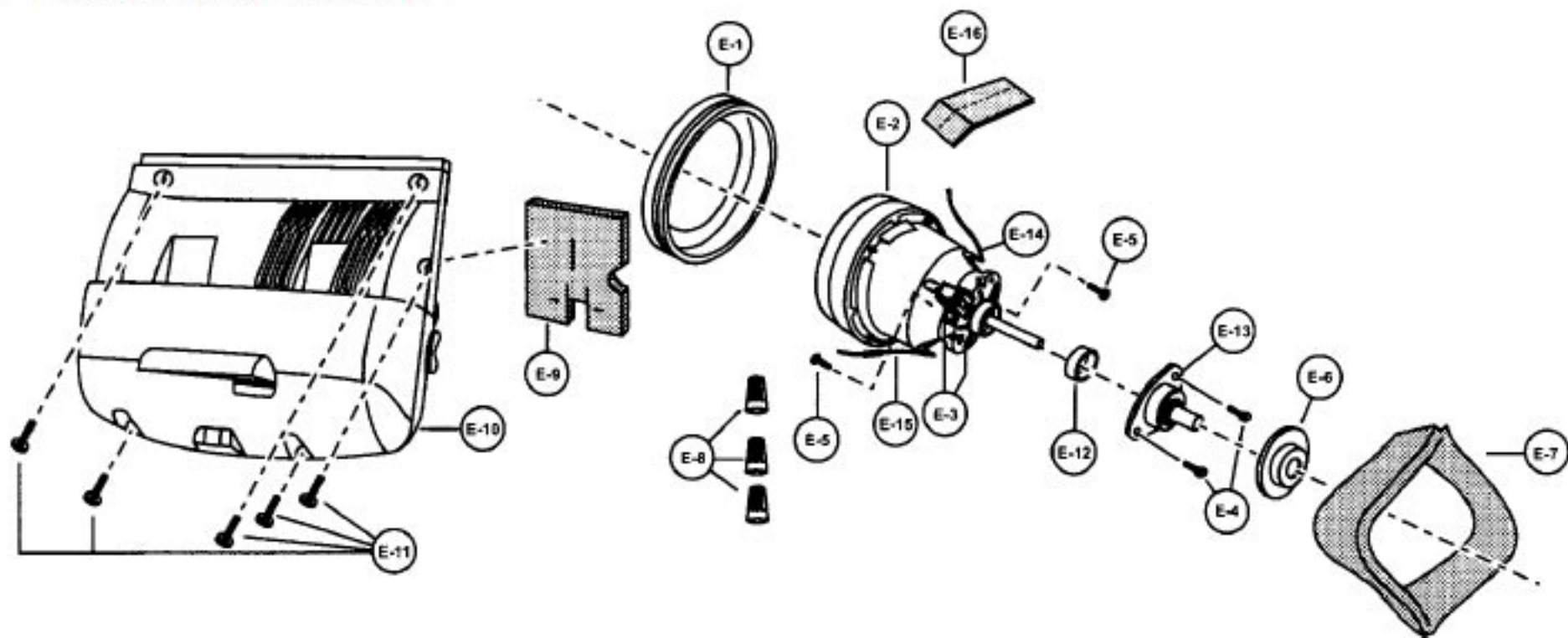


Models: MC-V7388

Body

- | | | | | | | | | | |
|----|-------|----------|-------|-------------------------|----|-----|----------|-------|------------------------|
| 1 | | P-111442 | | Dust compartment, mach | 21 | ... | P-10698 | | Packing, left |
| 2 | | P-000025 | | On/off switch | 22 | ... | P-111444 | | Dust cover |
| 3 | | P-0698 | | Cord stopper | 23 | ... | P-3820 | | Wire cord |
| 4 | | P-6140 | | Screw, cord stopper | 24 | ... | P-10928 | | Exhaust filter, HEPA |
| 5 | | P-10713 | | Power cord | 25 | ... | 10718 | | Indicator assembly |
| 6 | | P-000623 | | Wire connector | 26 | ... | P-98109 | | Body, indicator |
| 7 | | P-10925 | | Packing, dust container | 27 | ... | P-9300 | | Packing, indicator |
| 8 | | P-11207 | | Switch cover | 28 | ... | P-10400 | | Spring, indicator |
| 9 | | P-6140 | | Screw, switch cover | 29 | ... | P-000149 | | Lead, indicator |
| 10 | ... | P-9892 | | Lead wire, black | 30 | ... | P-000147 | | Cap, indicator |
| 11 | ... | P-9893 | | Filter supporter | 31 | ... | P-4104 | | Screw, indicator |
| 12 | ... | P-7023 | | Secondary filter, foam | 32 | ... | P-6800 | | Screw, on/off switch |
| 13 | ... | P-111443 | | Wheel | 33 | ... | P-0701 | | Switch lever |
| 14 | ... | P-10968 | | Shaft, wheel | 34 | ... | P-81105 | | Tight packing |
| 15 | ... | P-74009 | | Stopper, wheel | 35 | ... | P-10719 | | Packing, suction inlet |
| 16 | ... | P-6115 | | Washer, wheel | 36 | ... | P-111434 | | Ornamental plate |
| 17 | ... | P-111387 | | Dust bag, type U6 | 37 | ... | P-10929 | | Button |
| 18 | ... | P-10358 | | Bag supporter | 38 | ... | P-10930 | | Slider |
| 19 | ... | P-6140 | | Screw, bag supporter | 39 | ... | P-111467 | | PCB Assembly |
| 20 | ... | P-3990 | | Packing, right | | | | | |

Motor Case and Motor



- | | | | | |
|----|-------|----------|-------|------------------------------|
| 1 | | P-0293 | | Motor support rubber, front |
| 2 | | P-10933 | | Fan motor unit |
| 3 | | P-8182 | | Carbon brush assembly |
| 4 | | P-111435 | | Screw, flange |
| 5 | | P-9823 | | Screw, carbon brush assembly |
| 6 | | P-9911 | | Motor support rubber, rear |
| 7 | | P-10670 | | Noise suppressor |
| 8 | | P-000623 | | Wire connector |
| 9 | | P-9874 | | Packing, rear cover |
| 10 | ... | P-10934 | | Motor case |
| 11 | ... | P-8172 | | Screw, motor case |
| 12 | ... | P-8184 | | Ring, spacer |
| 13 | ... | P-111436 | | Flange |
| 14 | ... | P-10712 | | Lead wire |
| 15 | ... | P-10688 | | Lead wire assembly |
| 16 | ... | P-10649 | | cooling guide |