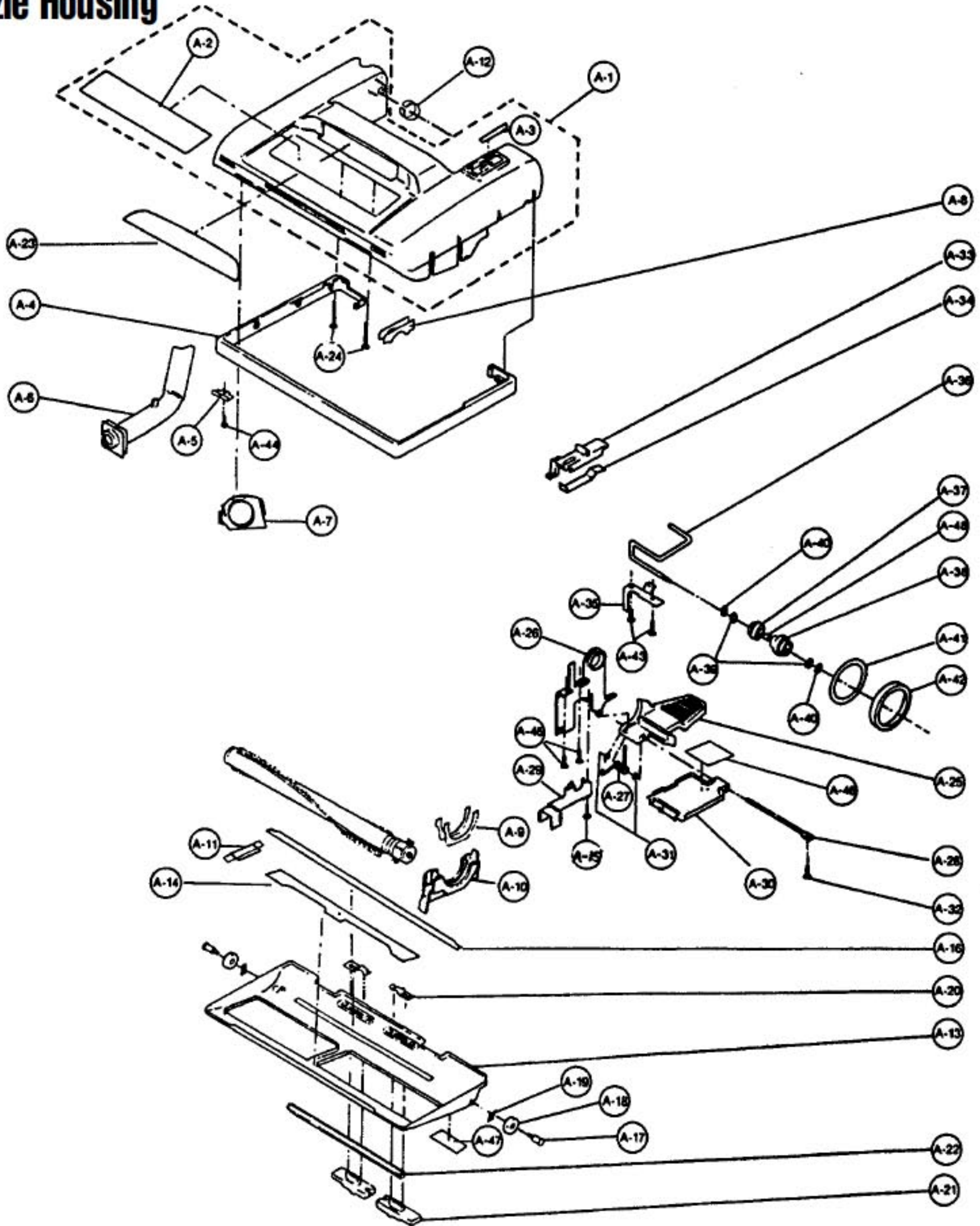


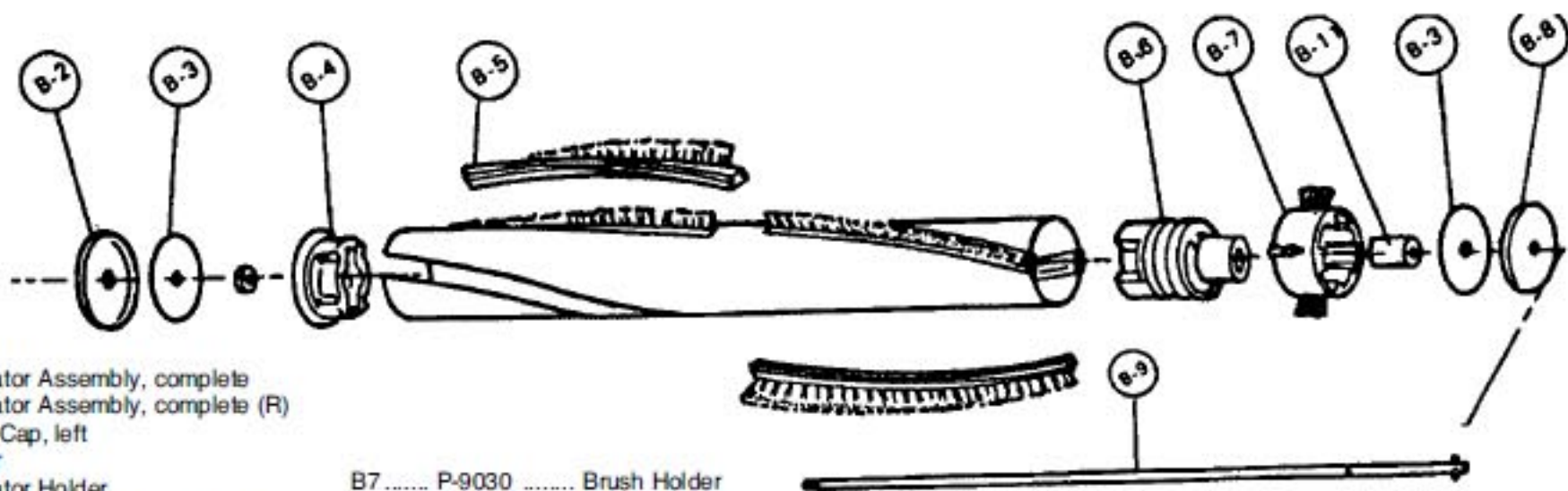
## Nozzle Housing



Models: MC-6640, MC-6647

A1..... P-0110 ..... Nozzle Housing, 6640	A17..... P-503 ..... Shaft, floor nozzle roller, 6647	A34..... P-243 ..... Spring, selector
A1..... P-01000 ..... Nozzle Housing, 6647	A18..... P-909 ..... Roller, floor nozzle	A35..... P-593 ..... Fitting Board
A2..... P-02100 ..... Top Mark, 6640	A19..... P-04 ..... Spring Nut, push-on	A36..... P-1014 ..... Shaft, idler pulley
A2..... P-02000 ..... Top Mark, 6647	A20..... P-704 ..... Spring, stop latch	A37..... P-334 ..... Pulley, 6640
A3..... NLA ..... Selector Mark	A21..... P-684 ..... Latch, 6640	A37..... P-8510 ..... Pulley Assy, 6647
A4..... P-1035 ..... Furniture Guard, 6640	A21..... P-2751 ..... Latch, 6647	A38..... P-901 ..... Idler Pulley
A4..... P-10300 ..... Furniture Guard, 6647	A22..... P-1032 ..... Floor Nozzle Rubber	A39..... P-051 ..... Washer, 6640
A5..... P-2731 ..... Hose Fitting Plate, 6640	A23..... N/A ..... Window, 6640	A39..... P-1600 ..... Washer, 6647
A5..... P-27300 ..... Hose Fitting Plate, 6647	A23..... P-21104 ..... Window, 6647	A40..... P-05 ..... E-Clip, 30 pk
A6..... P-703 ..... Nozzle Pipe	A24..... P-683 ..... Screw, nozzle housing, 6640	A41..... P-324 ..... Belt, round, sold each (R)
A7..... P-691 ..... Brush Holder	A24..... P-88300 ..... Screw, nozzle housing, 6647	A42..... P-325 ..... Belt, flat, sold each (R)
A8..... P-813 ..... Tight Packing	A25..... P-4730 ..... Pedal	P-245 ..... Belts, 1 round / 1 flat, 2 pack
A9..... P-753 ..... Body Packing	A26..... P-433 ..... Frame	A43..... P-418 ..... Screw, fitting board
A10..... P-4330 ..... Belt Cover	A27..... P-583 ..... Spring, pedal	A44..... P-416 ..... Screw, hose fitting plate, 6640, 10 pk
A11..... P-391 ..... Packing, lower plate, right	A28..... P-513 ..... Shaft, pedal	A44..... P-516 ..... Screw, hose fitting plate, 6647
A12..... P-0210 ..... Body Supporter	A29..... P-754 ..... Guide Lever	A45..... P-418 ..... Screw, frame
A13..... P-0006 ..... Lower Plate	A30..... P-1130 ..... Belt Cover, rear	A46..... P-0730 ..... Caution Label A
A14..... P-191 ..... Packing, lower plate, front	A31..... P-411 ..... E-Clip	A47..... P-083 ..... Caution Label
A15..... P-263 ..... Screw, frame	A32..... P-416 ..... Screw, pedal shaft, 10 pk	A48..... P-7410 ..... Spacer
A16..... P-741 ..... Packing, lower plate, back	A33..... P-183 ..... Selector Lever, 6640	
A17..... P-503 ..... Shaft, floor nozzle roller, 6640	A33..... P-0019 ..... Selector Lever, 6647	

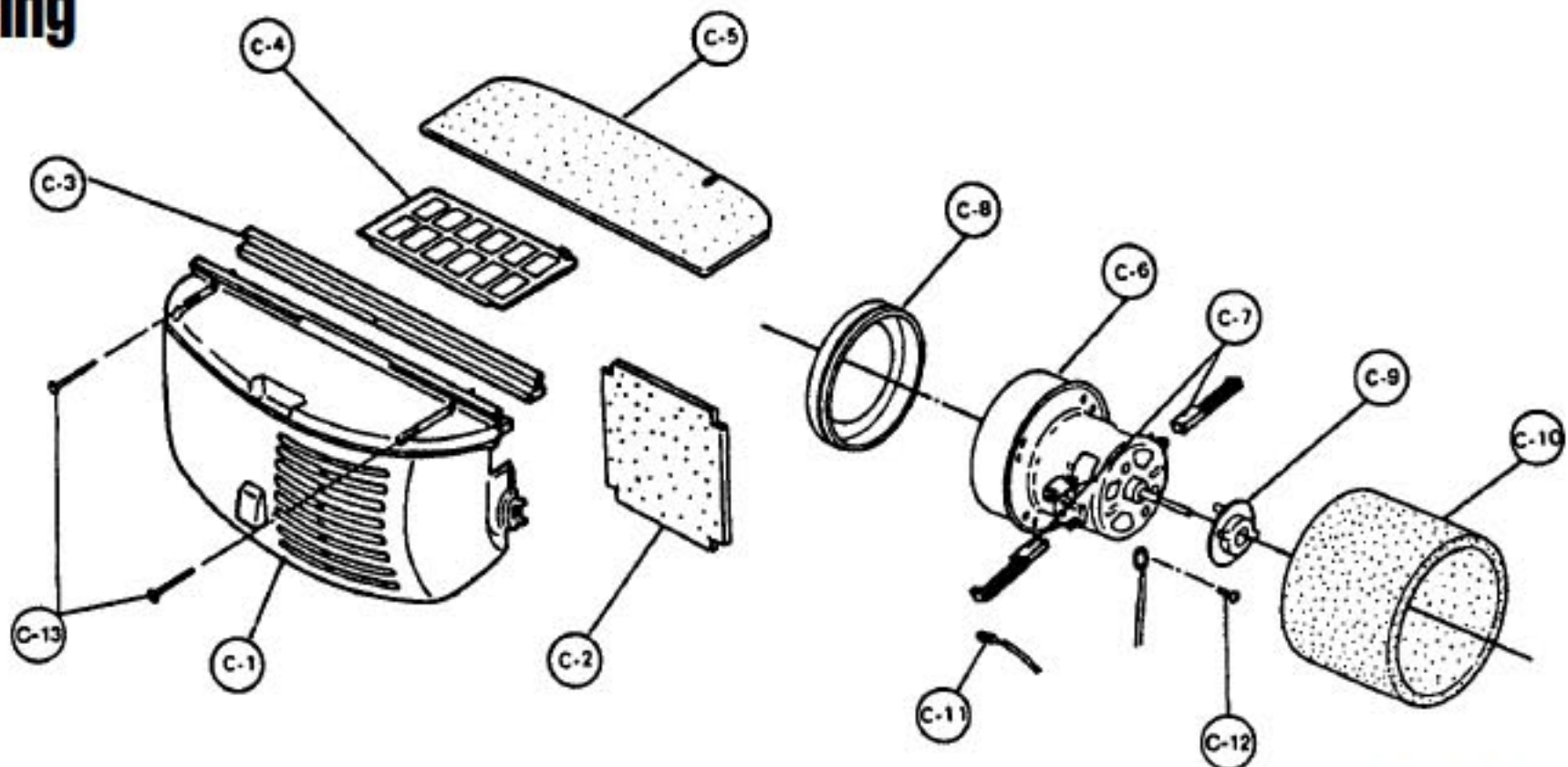
## Agitator Assembly



P-9231 ..... Agitator Assembly, complete  
P-6200 ..... Agitator Assembly, complete (R)

B2..... N/A ..... End Cap, left	B7..... P-9030 ..... Brush Holder
B3..... P-321 ..... Filter	B8..... P-00125 ..... End Cap, right
B4..... P-4101 ..... Agitator Holder	B9..... P-5730 ..... Agitator Shaft
B5..... P-85 ..... Brush Strip, 4 used, sold each	P-411 ..... E-Clip
B5..... P-425 ..... Brush Strip, 4 used, sold per pair (R)	B11..... P-7431 ..... Spacer
B6..... P-2931 ..... Agitator Pulley	

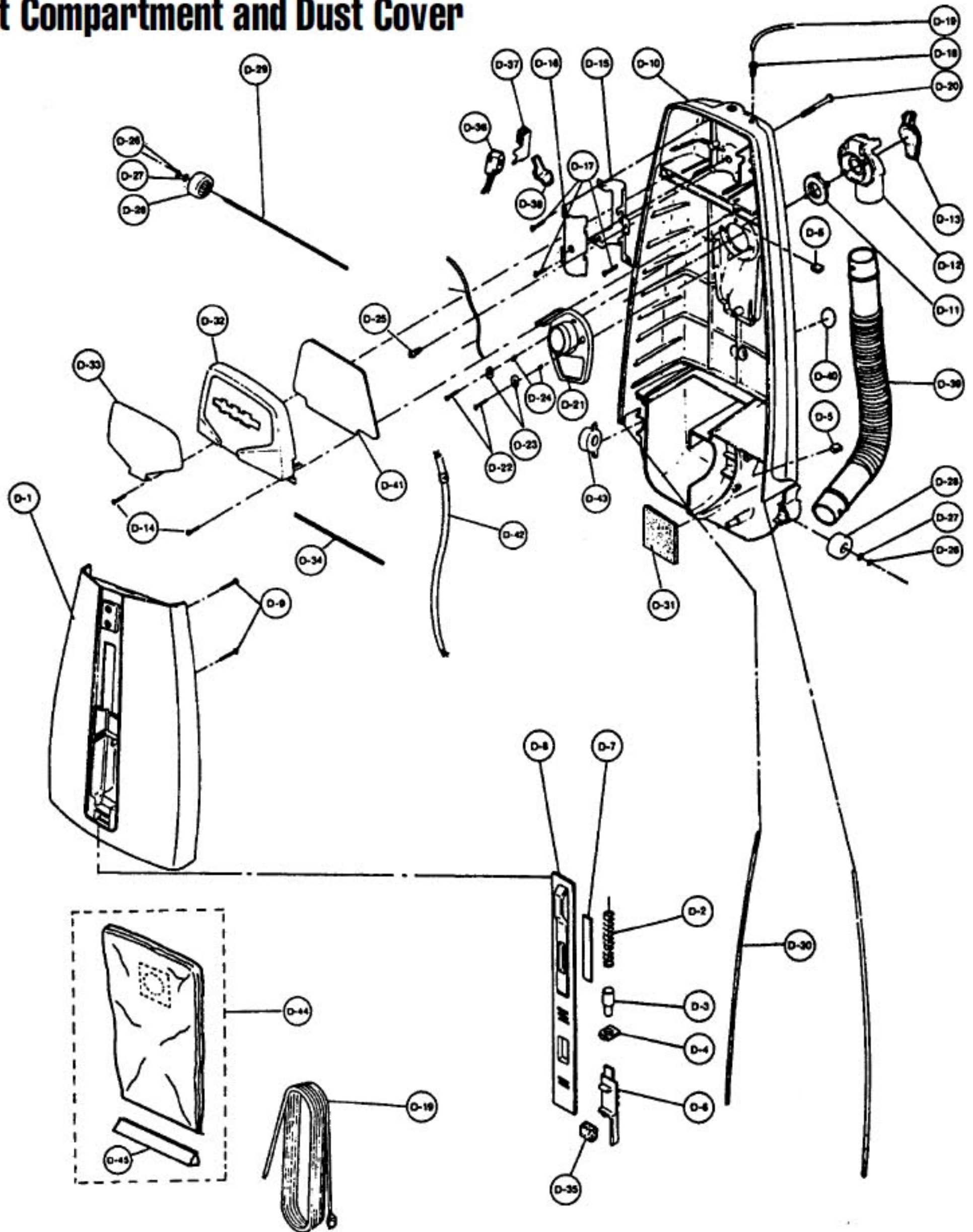
## Motor Housing



C1..... P-0932 ..... Motor Case, 6640	C6..... P-000062 ..... Motor, complete
C1..... P-9304 ..... Motor Case, 6647	C7..... P-272 ..... Carbon Brush, USA models
C2..... P-0232 ..... Packing, rear cover	C7..... P-0035 ..... Carbon Brush, Japanese models
C3..... P-1931 ..... Support Rubber, motor cover	C8..... P-24 ..... Support Rubber, motor, front
C4..... P-3200 ..... Supporter, filter	C9..... P-0300 ..... Support Rubber, motor, rear
C5..... P-3030 ..... Filter	C10..... P-9920 ..... Noise Suppressor

C11..... P-441 ..... Lead Wires, w/ AMP terminal, 6640
C11..... P-44000 ..... Lead Wires, w/ AMP terminal, 6647
C12..... P-480 ..... Screw, ground wire
C13..... P-418 ..... Screw, motor case

## Dust Compartment and Dust Cover



Models: MC-6640, MC-6647

D1	N/A	Dust Cover, 6640	D15	P-5311	Handle Supporter	D30	P-86300	Packing, dust box, 6647
D1	P-60404	Dust Cover, 6647	D16	P-2486	Handle Fitting	D31	N/A	Packing
D2	P-4105	Spring, indicator	D17	P-416	Screw, handle supporter, 10 pk	D32	P-0331	Switch Cover, 6640
D3	P-0049	Lead, indicator	D18	SS-35	Cord Lock, sold each (R)	D32	P-03904	Switch Cover, 6647
D4	P-203	Supporter, indicator lead	D19	P-94110	Cord, 6647	D33	P-2112	Ornamental Plate, 6640
D5	P-811	Tight Packing	D19	MP-503	Cord, 50 ft, 18/3, black (R)	D33	P-21000	Ornamental Plate, 6647
D6	P-0630	Lever, suction control, 6640	D20	P-000132	Screw, handle	D34	P-7332	Packing, dust cover
D6	P-06300	Lever, suction control, 6647	D21	N/A	Bag Supporter, 6640	D35	P-0069	Packing, indicator
D7	P-0830	Window, indicator	D21	P-10310	Bag Supporter, 6647	D36	P-987	Main Switch
D8	N/A	Front Cover, 6640	D22	P-418	Screw, bag supporter	D37	P-453	Terminal Cover
D8	P-00100	Front Cover, 6647	D23	P-587	Washer	D38	P-153	Switch Lever
D9	P-416	Screw, dust cover, 10 pk	D24	P-341	Spacer	D39	P-3431	Nozzle Hose, 6640
D10	N/A	Dust Compartment	D25	P-418	Screw, connection cord	D39	P-0081	Nozzle Hose, 6647
D11	P-647	Packing, suction inlet, 6640	D26	P-05	E-Clip, 30 pk	D40	P-0570	Sticker
D11	P-1034	Packing, suction inlet, 6647	D27	P-051	Washer, 6640	D41	P-463	Partition Board, 6640
D12	P-607	Suction Inlet, 6640	D27	P-1600	Washer, 6647	D42	P-6413	Connection Cord
D12	P-2495	Suction Inlet, 6647	D28	P-0107	Roller, 6640	D43	P-2530	Shaft, plastic
D13	N/A	Cover, 6640	D28	P-0114	Roller, 6647	D44	P-9923	Cloth Bag, w/ slide
D13	P-2493	Cover, 6647	D29	P-163	Shaft, roller	D44	P-55	Cloth Bag, red, w/ slide (R)
D14	P-416	Screw, switch cover, 10 pk	D30	P-663	Packing, dust box, 6640	D45	P-232	Supporter, dust bag

## Handle Assembly

E1	P-2210	Handle Grip, right, 6640
E1	P-22104	Handle Grip, right, 6647
E2	P-2310	Handle Grip, left, 6640
E2	P-23104	Handle Grip, left, 6647
E3	P-6414	Handle
E4	P-9318	Window, switch
E5	P-6931	Knob, switch, 6640
E5	P-06930	Knob, switch, 6647
E6	P-416	Screw, handle grip, 10 pk
E7	P-5312	Cord Hook, upper, 6640
E7	P-10534	Cord Hook, upper, 6647
E8	P-416	Screw, upper cord hook, 10 pk
E9	P-623	Handle Lever

