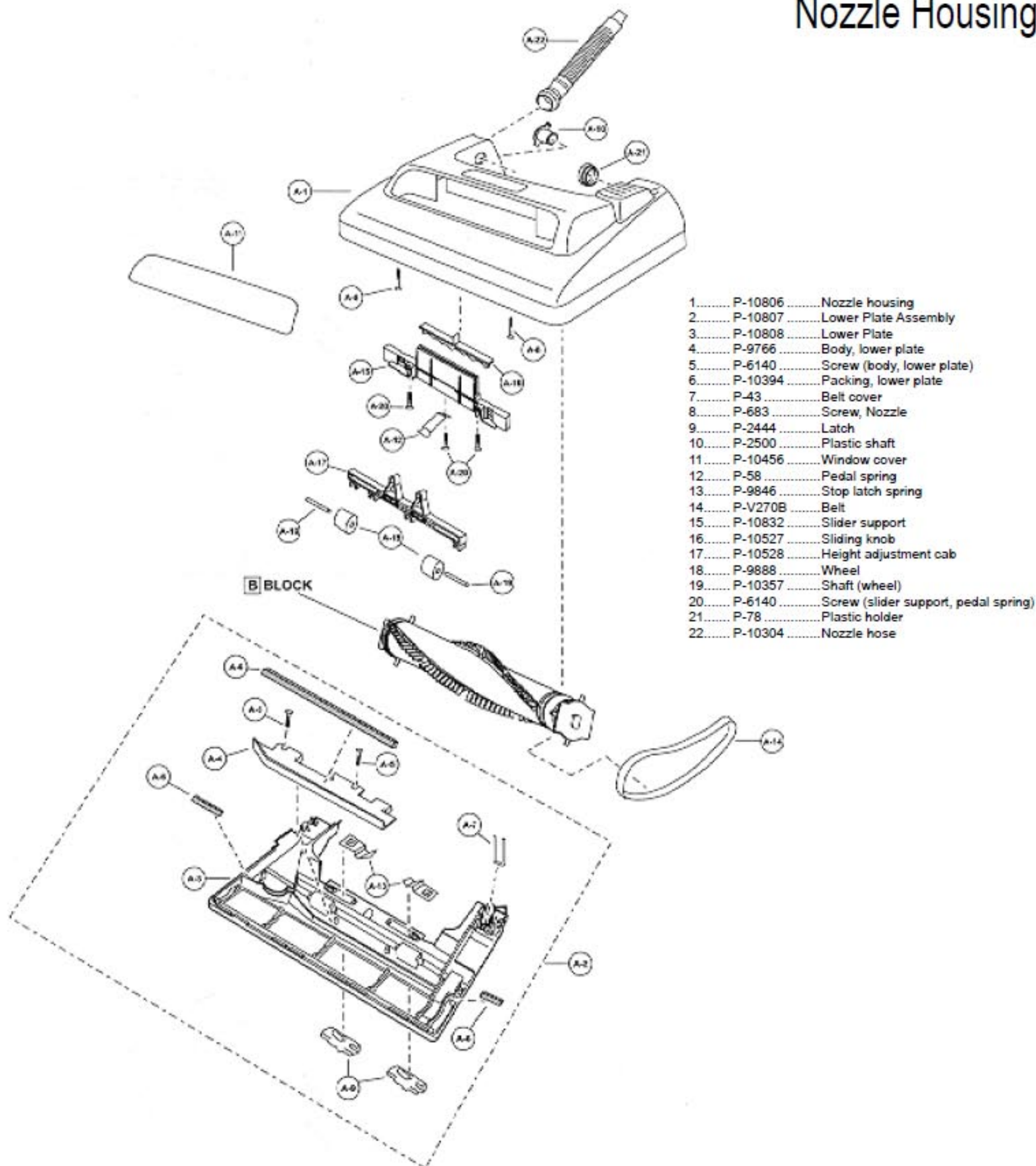


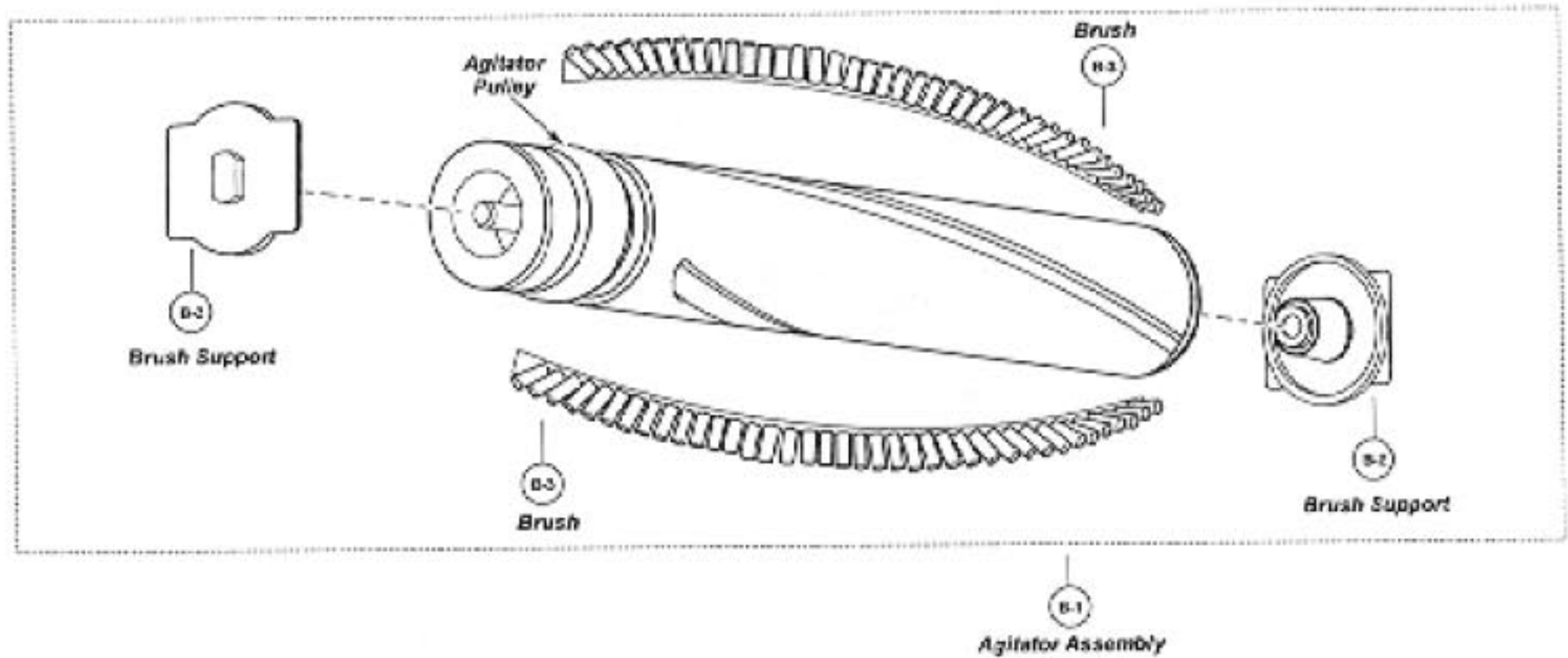
Nozzle Housing



- 1..... P-10806 Nozzle housing
- 2..... P-10807 Lower Plate Assembly
- 3..... P-10808 Lower Plate
- 4..... P-9766 Body, lower plate
- 5..... P-6140 Screw (body, lower plate)
- 6..... P-10394 Packing, lower plate
- 7..... P-43 Belt cover
- 8..... P-683 Screw, Nozzle
- 9..... P-2444 Latch
- 10..... P-2500 Plastic shaft
- 11..... P-10456 Window cover
- 12..... P-58 Pedal spring
- 13..... P-9846 Stop latch spring
- 14..... P-V270B Belt
- 15..... P-10832 Slider support
- 16..... P-10527 Sliding knob
- 17..... P-10528 Height adjustment cap
- 18..... P-9888 Wheel
- 19..... P-10357 Shaft (wheel)
- 20..... P-6140 Screw (slider support, pedal spring)
- 21..... P-78 Plastic holder
- 22..... P-10304 Nozzle hose

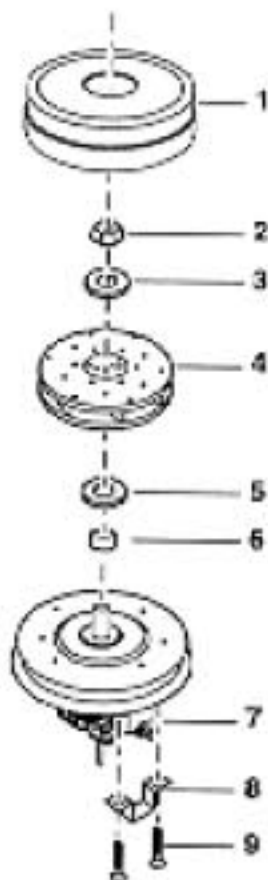
Agitator Assembly

- 1..... P-10809Agitator Unit
- 2..... P-9906End Cap
- 3..... P-10810Brush Unit



Motor Fan Assembly

- 1..... P-00067Fan case
- 2..... P-00068Nut
- 3..... P-00621Washer (A)
- 4..... P-000152Fan
- 5..... P-6206Washer (B)
- 6..... P-10329Spacer
- 7..... P-10393Brush assembly
- 8..... P-0036Bracket
- 9..... P-0037Screws



Body, Motor Housing, and Motor

- | | |
|---|--|
| 1..... P-10803Dust compartment unit | 27..... P-9912Screw, ground |
| 2..... P-10451On/Off switch | 28..... P-10670Noise suppressor |
| 3..... P-10804Power cord | 29..... P-10338Motor support (rear) |
| 4..... P-000623Wire connector | 30..... P-0293Motor support rubber (front) |
| 5..... P-660106Packing (dust container) | 31..... P-10385Wire cord |
| 6..... P-10452Switch cover | 32..... P-000623Wire connector |
| 7..... P-73006Packing (switch cover) | 33..... P-10537Handle assembly |
| 8..... P-6140Screw (switch cover) | 34..... P-10816Lead wire assembly |
| 9..... P-7301Handle screw | 35..... P-10833Dust cover |
| 10..... P-2117Nut (handle screw) | 36..... P-8946Hose |
| 11..... P-3200Filter supporter | 37..... P-00104Plastic cover (motor) |
| 12..... P-375Secondary filter | 38..... P-10779Wire tie |
| P-9994Secondary Filter, HEPA | 39..... P-000057Protector |
| 13..... P-10441Wheel | 40..... P-692Protector spring (blue) |
| 14..... P-16005Shaft (wheel) | 41..... P-1806Protector supporter |
| 15..... P-74009Stopper (wheel) | 42..... P-6806Protector case |
| 16..... P-6115Washer (wheel) | 43..... P-10389Rubber protector |
| 17..... P-145MDust bag (type U6) | 44..... P-10390Flat washer, round |
| 18..... P-10449Screw (hose holder) | 45..... P-10391Cord retainer |
| 19..... P-10382Cover (suction inlet) | 46..... P-6106Packing (insulator) |
| 20..... P-6140Screw (suction inlet) | 47..... P-10340Hose hook |
| 21..... P-11197Motor case | 48..... P-10463Hose adapter |
| 22..... P-201Packing (rear cover) | 49..... P-10805Crevice tool |
| 23..... P-9899Packing (motor case) | 50..... P-6088Dusting brush |
| 24..... P-8172Screw (motor case) | 51..... P-10781Extension wand |
| 25..... P-10533Fan motor unit | 52..... P-9837Hose holder |
| 26..... P-10384Cover cap | |

Body, Motor Housing, and Motor

