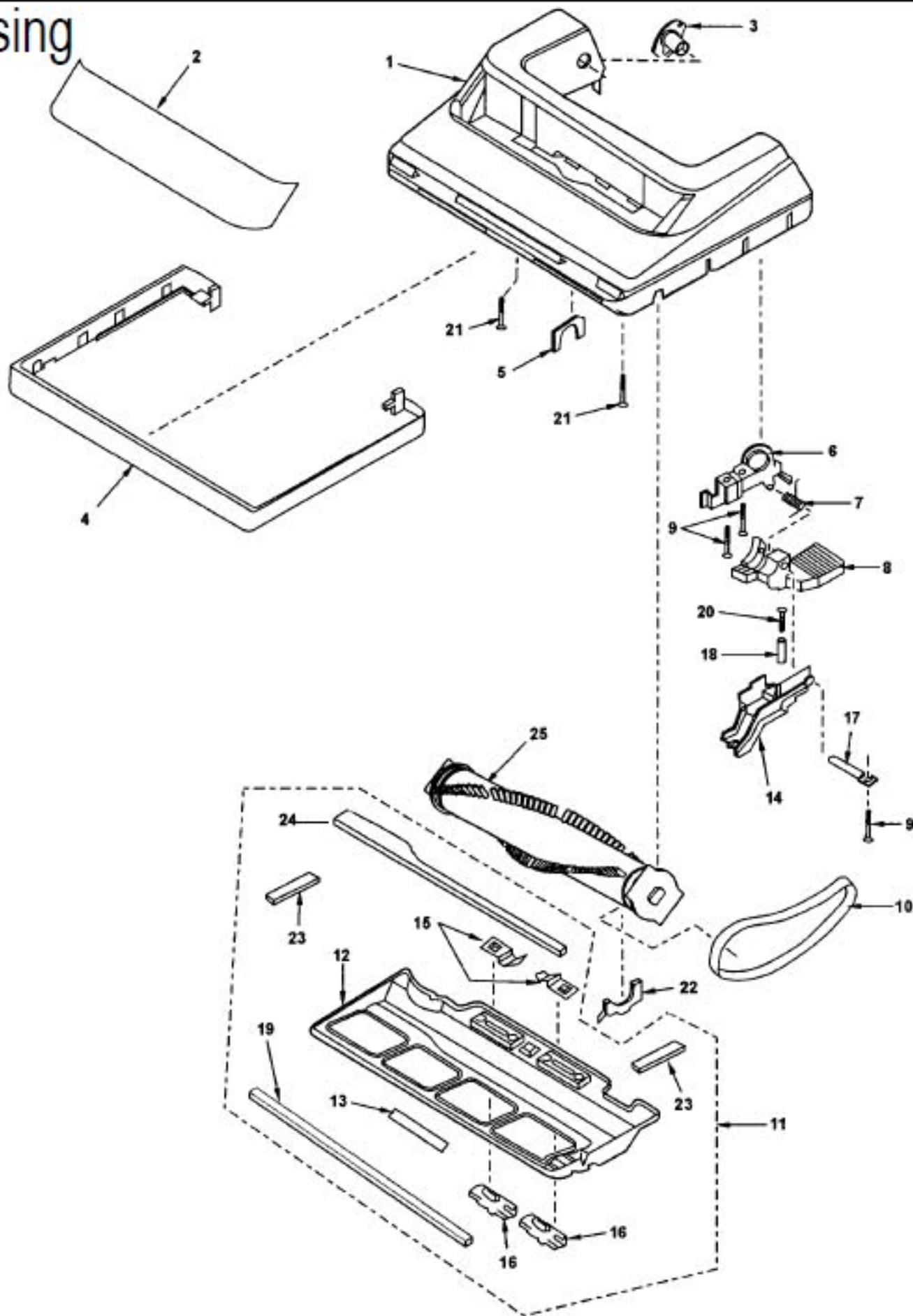


Models: MC-V5504

Nozzle Housing

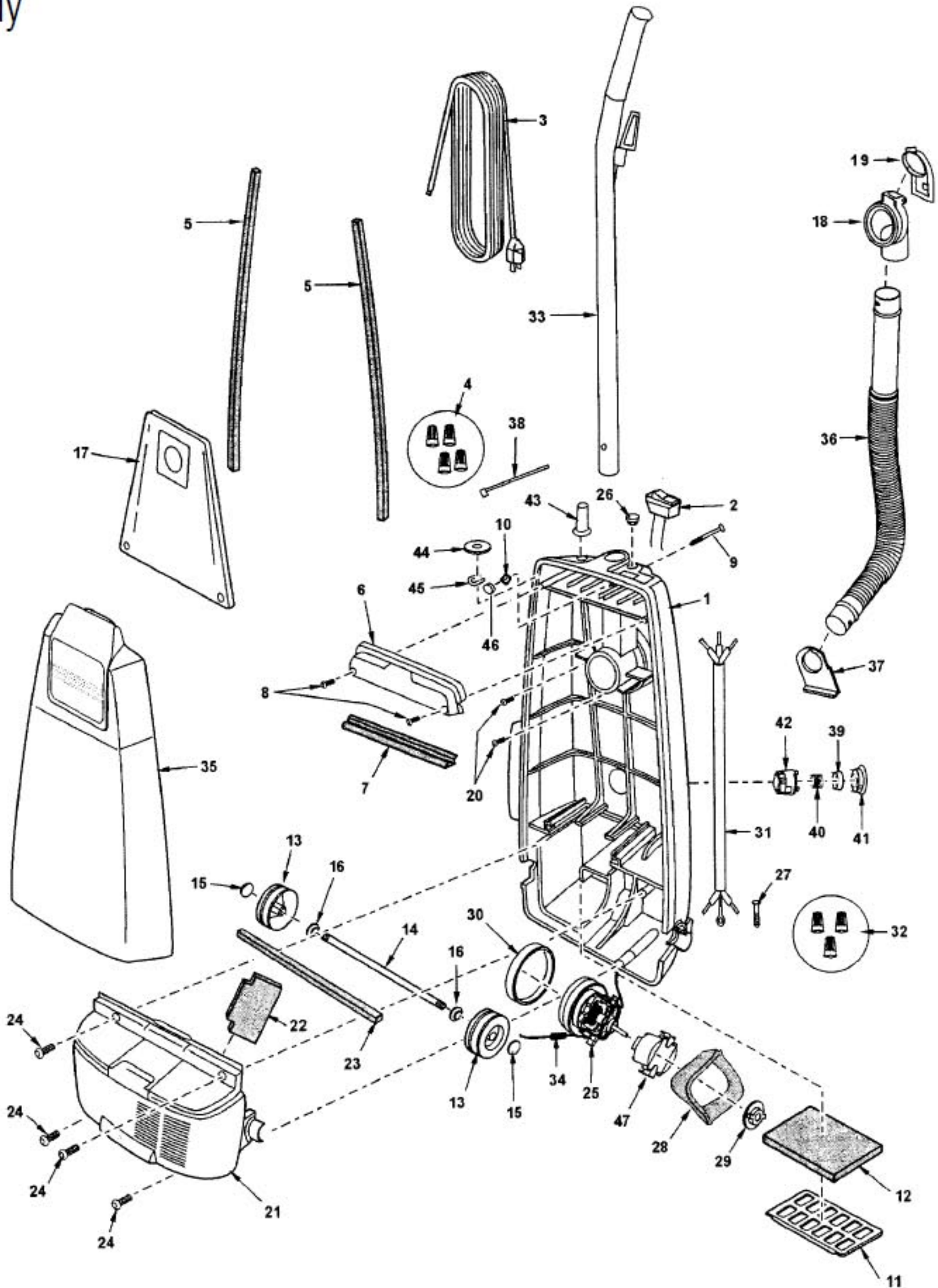


| Index | Part No. | Description |
|-------|----------|----------------------|
| 1 | P-111778 | Nozzle housing |
| 2 | P-10369 | Window |
| 3 | P-10819 | Shaft (plastic) |
| 4 | P-000274 | Furniture guard |
| 5 | P-81 | Packing (nozzle) |
| 6 | P-000095 | Frame |
| 7 | P-111427 | Spring (pedal) |
| 8 | P-4720 | Pedal |
| 9 | P-6140 | Screw (frame) |
| 10 | P-V270B | Belt |
| 11 | P-10370 | Lower plate assembly |
| 12 | P-10371 | Lower plate |
| 13 | P-9826 | Warning label |

| Index | Part No. | Description |
|-------|----------|-----------------------------|
| 14 | P-1124 | Belt cover (rear) |
| 15 | P-9846 | Stop latch spring |
| 16 | P-2751 | Latch |
| 17 | P-00051 | Pedal shaft |
| 18 | NLA | Spacer |
| 19 | P-10373 | Packing (lower plate front) |
| 20 | P-10812 | Screw (spacer) |
| 21 | P-683 | Screw (nozzle) |
| 22 | P-8220 | Agiator holder |
| 23 | P-392 | Packing (lower plate sides) |
| 24 | P-742 | Packing (lower plate back) |
| 25 | P-111482 | Agiator unit |

Models: MC-V5504

Body



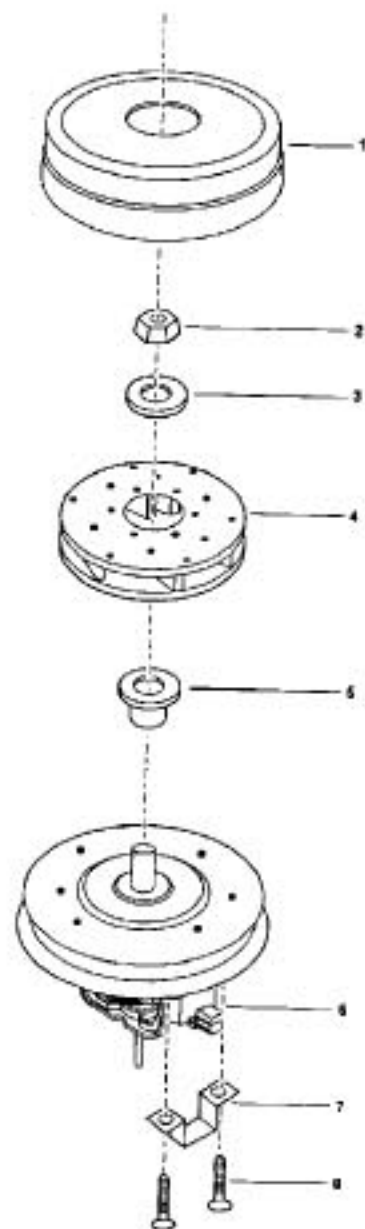
Models: MC-V5504

Body

| Index | Part No. | Description |
|-------|----------|--------------------------|
| 1 | P-10379 | Dust compartment |
| 2 | P-10451 | On/off switch |
| 3 | P-10804 | Power cord |
| 4 | P-000623 | Wire connector |
| 5 | P-660106 | Packing (dust container) |
| 6 | P-10452 | Switch cover |
| 7 | P-73006 | Packing (switch cover) |
| 8 | P-6140 | Screw (switch cover) |
| 9 | P-7301 | Handle screw |
| 10 | P-2117 | Nut (handle screw) |
| 11 | P-3200 | Filter supporter |
| 12 | P-375 | Secondary filter |
| | P-9994 | Secondary filter, HEPA |
| 13 | P-111315 | Wheel |
| 14 | P-10968 | Shaft roller |
| 15 | P-74009 | Stopper (wheel) |
| 16 | P-6115 | Washer (wheel) |
| 17 | P-14514 | Dust bag (type U6) |
| 18 | P-000625 | Suction inlet |
| 19 | P-111502 | Cover (suction inlet) |
| 20 | P-6140 | Screw (suction inlet) |
| 21 | P-10383 | Motor case |
| 22 | P-200 | Packing (rear cover) |
| 23 | P-10825 | Packing (motor case) |

| Index | Part No. | Description |
|-------|----------|------------------------------|
| 24 | P-8172 | Screw (motor case) |
| 25 | P-000629 | Motor fan |
| 26 | P-10459 | Cover cap |
| 27 | P-9912 | Screw ground |
| 28 | P-111730 | Noise suppressor |
| 29 | P-10338 | Motor support (rear) |
| 30 | P-0293 | Motor support rubber (front) |
| 31 | P-10385 | Wire cord |
| 32 | P-000623 | Wire connector |
| 33 | P-111485 | Handle |
| 34 | P-10816 | Lead wire assembly |
| 35 | P-111777 | Dust cover |
| 36 | P-8917 | Hose |
| 37 | P-2420 | Hose supporter |
| 38 | P-00104 | Wire tie |
| 39 | P-000057 | Protector |
| 40 | P-10388 | Protector spring yellow |
| 41 | P-1806 | Protector spring |
| 42 | P-6806 | Protector case |
| 43 | P-10389 | Rubber protector |
| 44 | P-10390 | Washer |
| 45 | P-10391 | Cord retainer |
| 46 | P-6106 | Packing (insulator) |
| 47 | P-93033 | Plastic cover (motor) |

Motor Fan



| Index | Part No. | Description |
|-------|----------|----------------|
| 1 | P-000067 | Fan Case |
| 2 | P-000068 | Nut |
| 3 | P-00621 | Washer |
| 4 | P-000152 | Fan |
| 5 | P-000071 | Spacer |
| 6 | P-270091 | Brush assembly |
| 7 | P-10444 | Bracket |
| 8 | P-10445 | Screw |