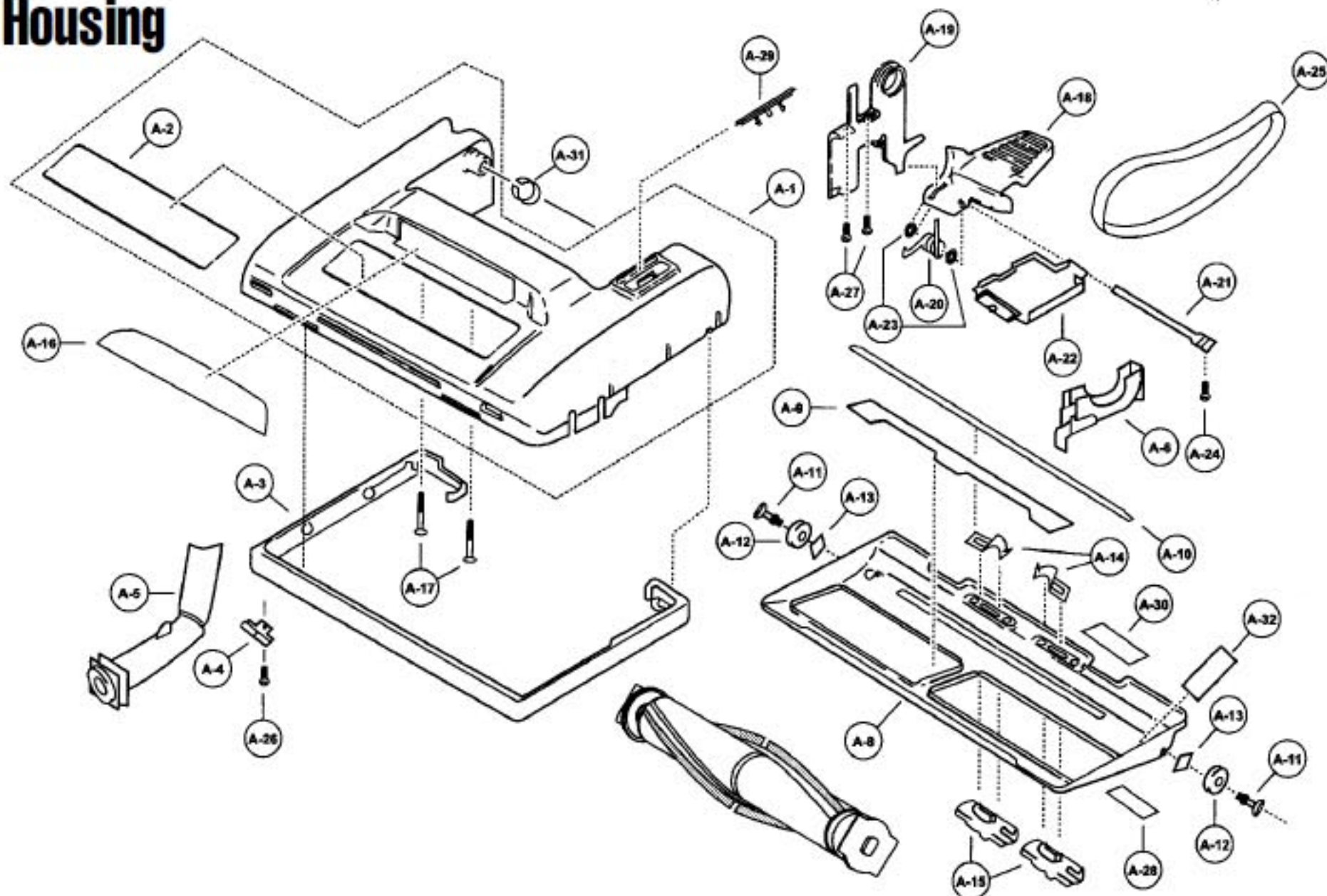


Models: MC-V6602

Nozzle Housing

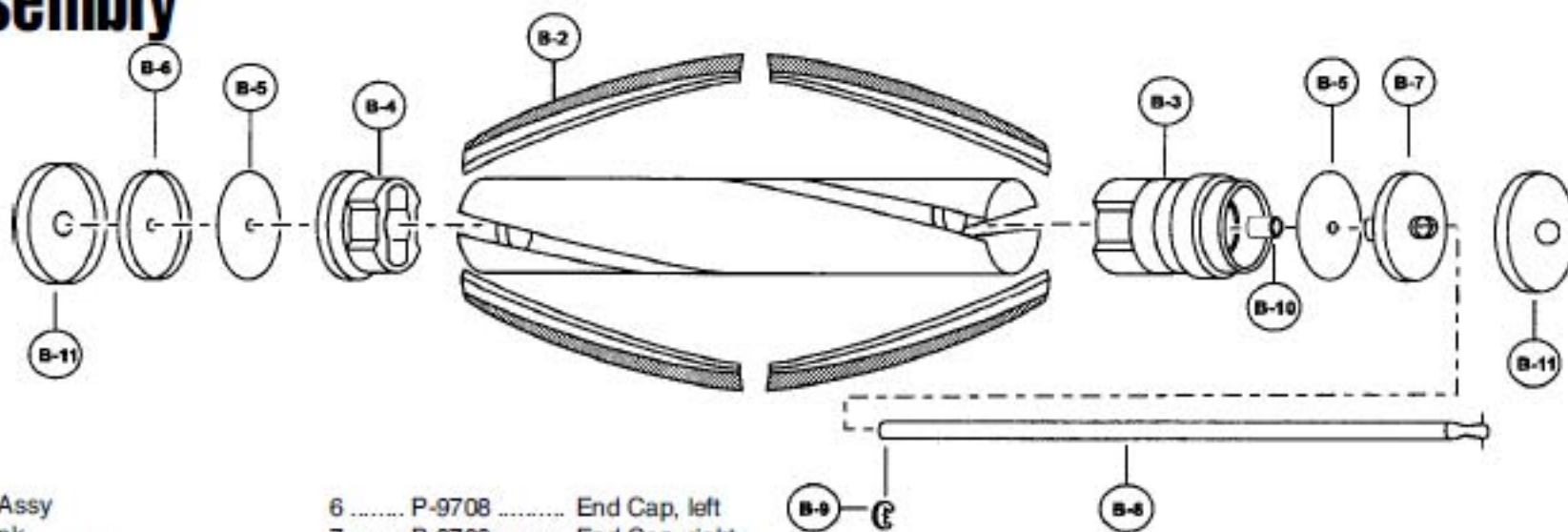


- 1 P-10416 Nozzle Housing
- 2 P-10417 Top Mark
- 3 P-10307 Furniture Guard
- 4 P-2731 Hose Fitting Plate
- 5 P-7030 Nozzle Pipe
- 6 P-4305 Belt Cover
- 7 P-10418 Lower Plate Assy
- 8 P-10419 Lower Plate
- 9 P-193 Packing, lower plate, front
- 10 P-7430 Packing, lower plate, back
- 11 P-503 Roller Shaft

- 12 P-10420 Roller, floor nozzle
- 13 P-04 Spring Nut, push on
- 14 P-9846 Stop Latch Spring
- 15 P-2751 Latch
- 16 P-21107 Window
- 17 P-683 Screw, nozzle housing
- 18 P-0016 Pedal
- 19 P-433 Frame
- 20 P-583 Pedal, spring
- 21 P-513 Pedal Shaft
- 22 P-1130 Rear Belt Cover

- 23 P-4003 E-Clip
- 24 P-8172 Screw, pedal shaft
- 25 P-10421 Flat Belt
- 26 P-6140 Screw, hose fitting plate
- 27 P-8172 Screw, frame
- 28 P-083 Warning Label
- 29 P-24007 Cover Plate
- 30 P-9826 Caution Label
- 31 P-0210 Body Supporter
- 32 P-10422 Packing, lower plate

Agitator Assembly

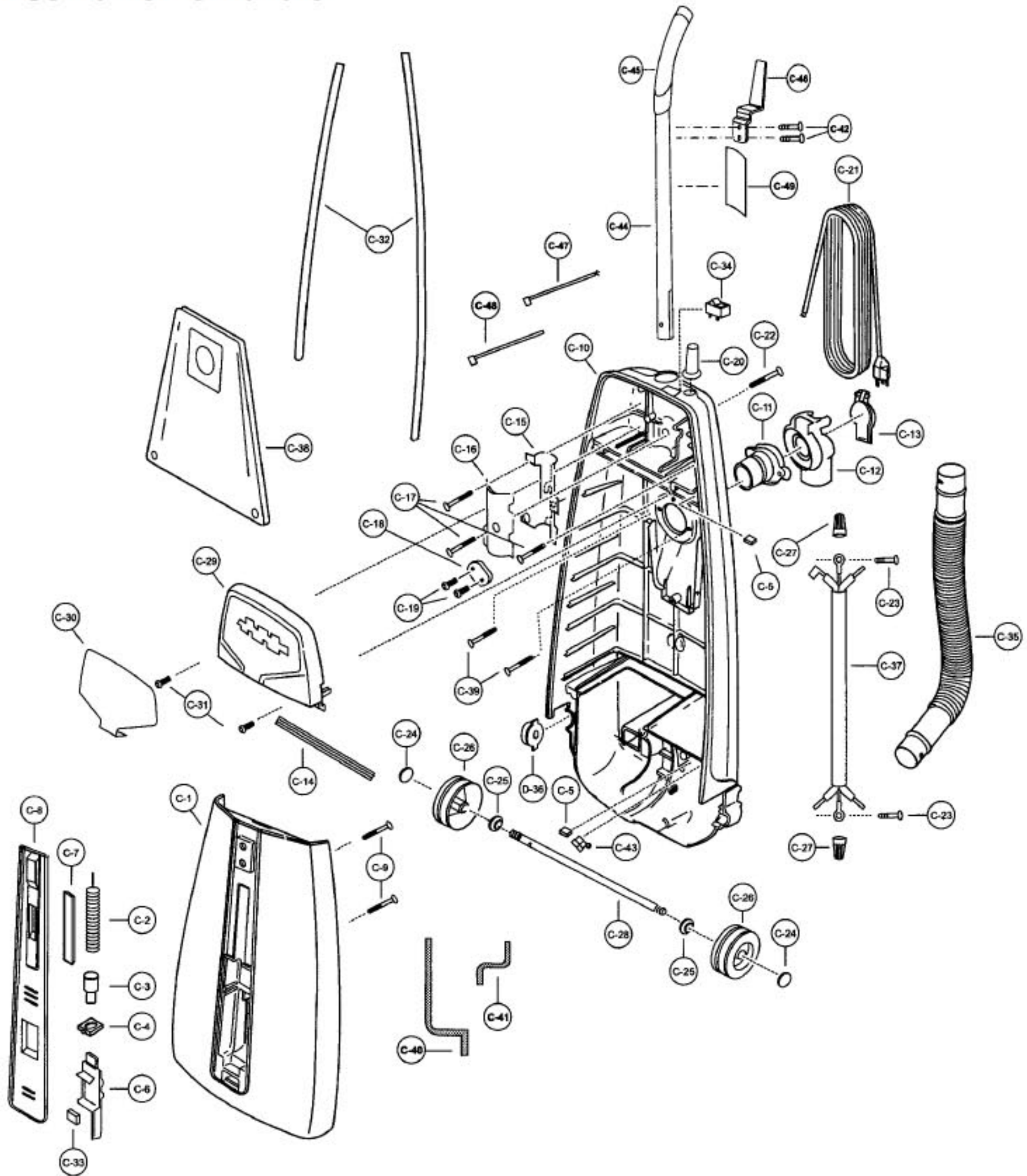


- P-925 Agitator Assy
- 2 P-10375 Brush, 4pk
- 3 P-10683 Agitator Pulley, 6602
- 3 P-5918 Agitator Pulley, 6602-01
- 4 P-5919 Agitator Holder
- 5 P-10376 Filter

- 6 P-9708 End Cap, left
- 7 P-9709 End Cap, right
- 8 P-59200 Agitator Shaft
- 9 P-4003 E-Clip
- 10 P-10423 Spacer
- 11 P-10377 End Cap Cover

Models: MC-V6602

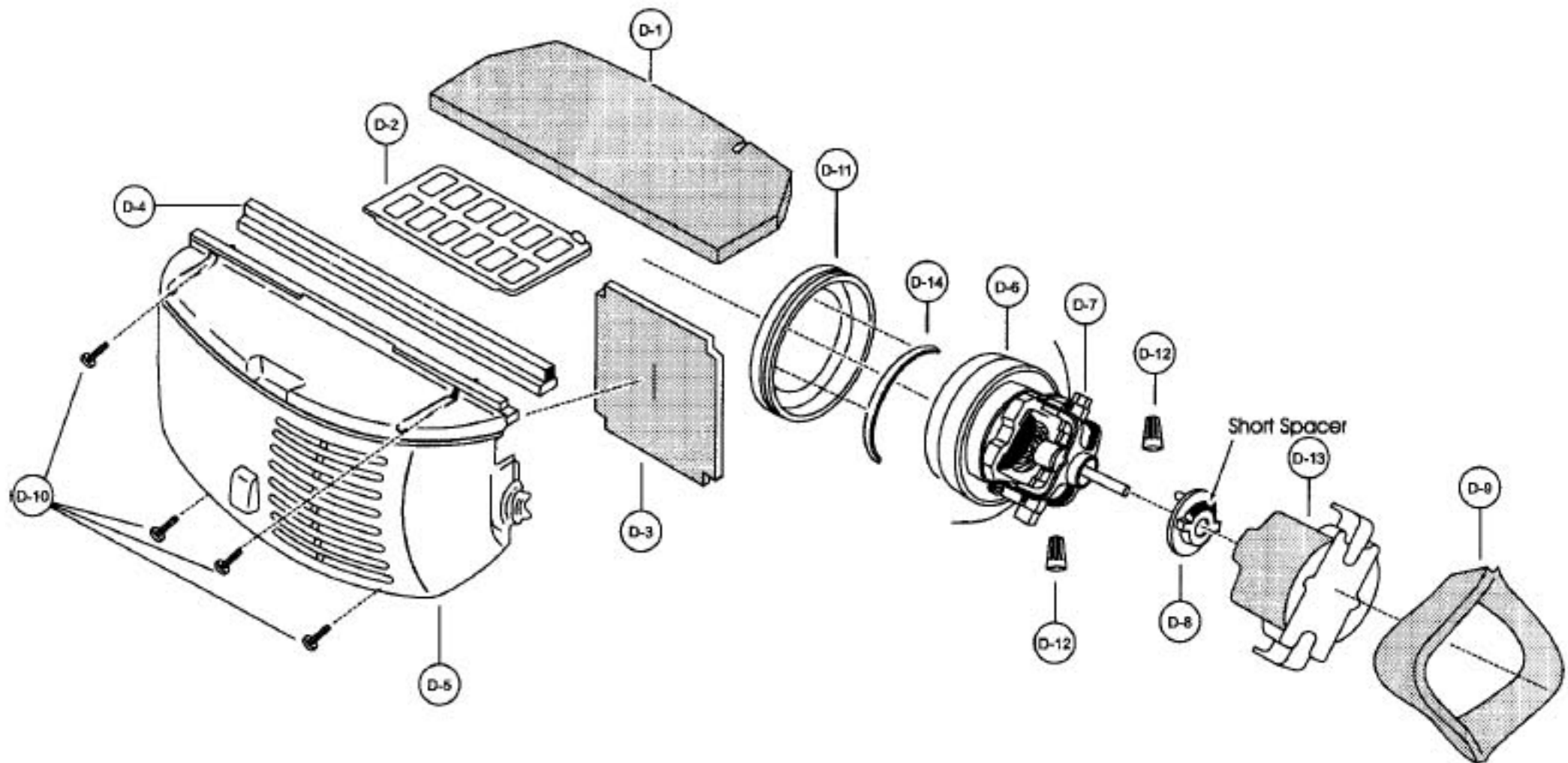
Dust Container & Handle



Models: MC-V6602

- | | | |
|--|--|---|
| 1 P-10424 Dust Cover | 18 P-62001 Cord Stopper | 35 P-10432 Nozzle Hose |
| 2 P-4105 Indicator Spring | 19 P-6140 Screw | 36 P-2530 Plastic Shaft |
| 3 P-0049 Indicator Lead | 20 P-10389 Rubber Protector | 37 P-6405 Connection Cord |
| 4 P-203 Indicator Lead Supporter | 21 P-10429 Power Cord | 38 P-145M Paper Bag, type U6, micro, 3pk |
| 5 P-81105 Tight Packing | 22 P-7330 Handle Screw | 39 P-6140 Screw, suction inlet packing |
| 6 P-10425 Suction Control Lever | 23 P-9912 Screw, grounding | 40 P-5860 Packing, left |
| 7 P-0830 Indicator Window | 24 P-74009 Stopper, wheel | 41 P-3990 Packing, right |
| 8 P-10426 Front Cover | 25 P-6115 Washer | 42 P-6800 Screw, upper cord hook |
| 9 P-6140 Screw, dust cover | 26 P-0114 Wheel | 43 P-62100 Cord Stopper |
| 10 P-10427 Dust Container | 27 P-10450 Wire Nut | 44 P-000631 ... Handle |
| 11 P-1034 Suction Inlet Packing | 28 P-1605 Roller Shaft | 45 P-5016 Handle Grip |
| 12 P-10381 Suction Inlet | 29 P-10430 Switch Cover | 46 P-000633 ... Upper Cord Hook, metal |
| 13 P-10382 Cover | 30 P-10431 Ornamental Plate | 47 P-4410 Lead Wire |
| 14 P-10428 Packing, switch cover | 31 P-6140 Screw | 48 P-00104 Tie Cable |
| 15 P-5109 Handle Supporter | 32 P-2488 Packing, dust container | 49 P-10392 Label, wet surface |
| 16 P-69300 Handle Fitting | 33 P-0069 Packing, indicator | |
| 17 P-6140 Screw, handle supporter | 34 P-7938 Switch, on/off | |

Motor Unit



- | | | |
|--|--|------------------------------------|
| 1 P-3030 Secondary Filter | 7 P-10393 Carbon Brush, set | 12 P-000623 ... Wire Nut |
| 2 P-3200 Filter Supporter | 8 P-10434 Motor Support Rubber, rear | 13 P-93033 Motor Cover |
| 3 P-0232 Rear Cover Packing | 9 P-9931 Noise Suppressor | 14 P-10435 Spacer, long |
| 4 P-10433 Motor Case Packing | 10 P-6140 Screw | |
| 5 P-93407 Motor Case | 11 P-24 Motor Support Rubber, front | |
| 6 P-92105 Motor Assy | | |