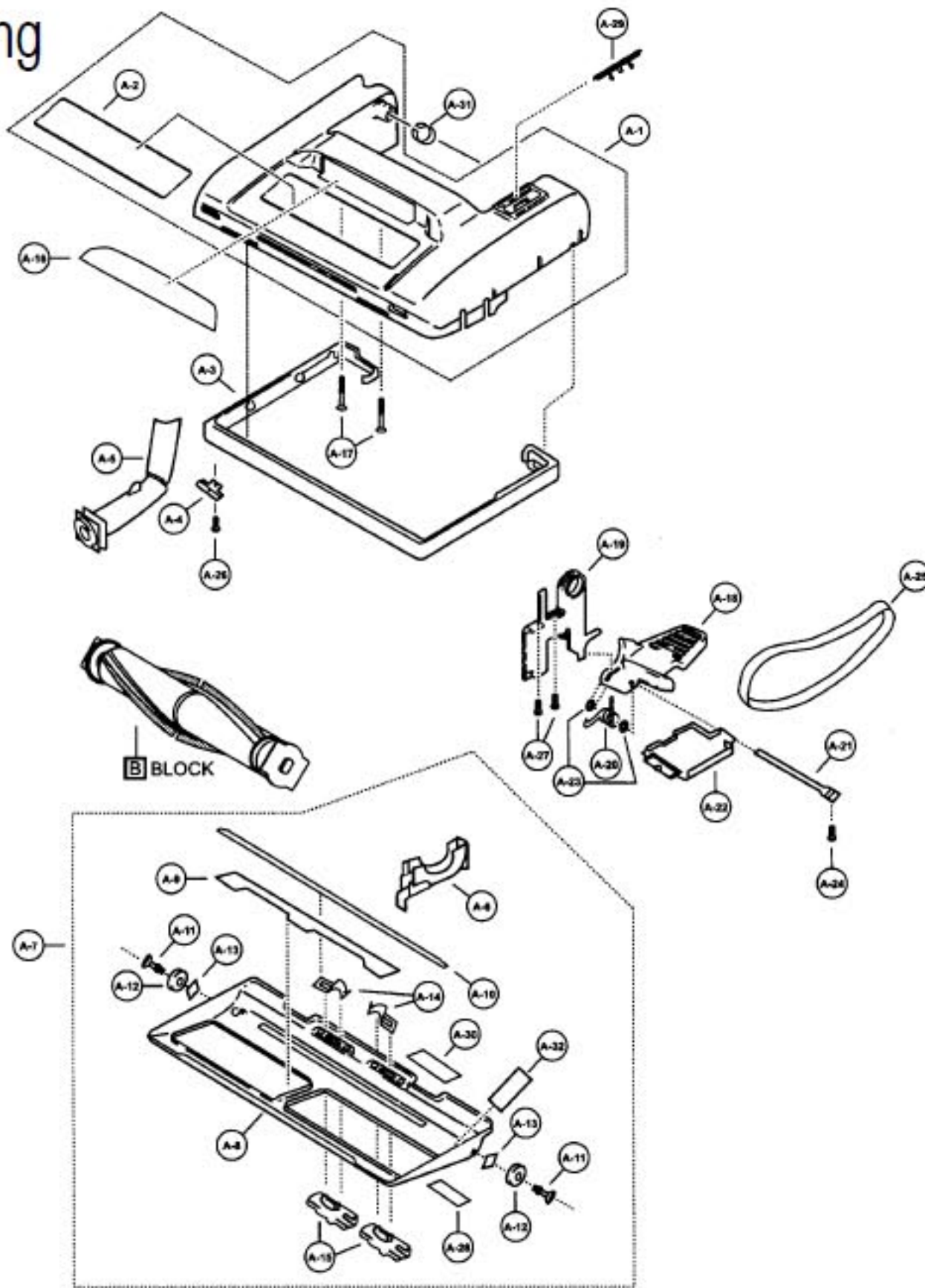


Nozzle Housing

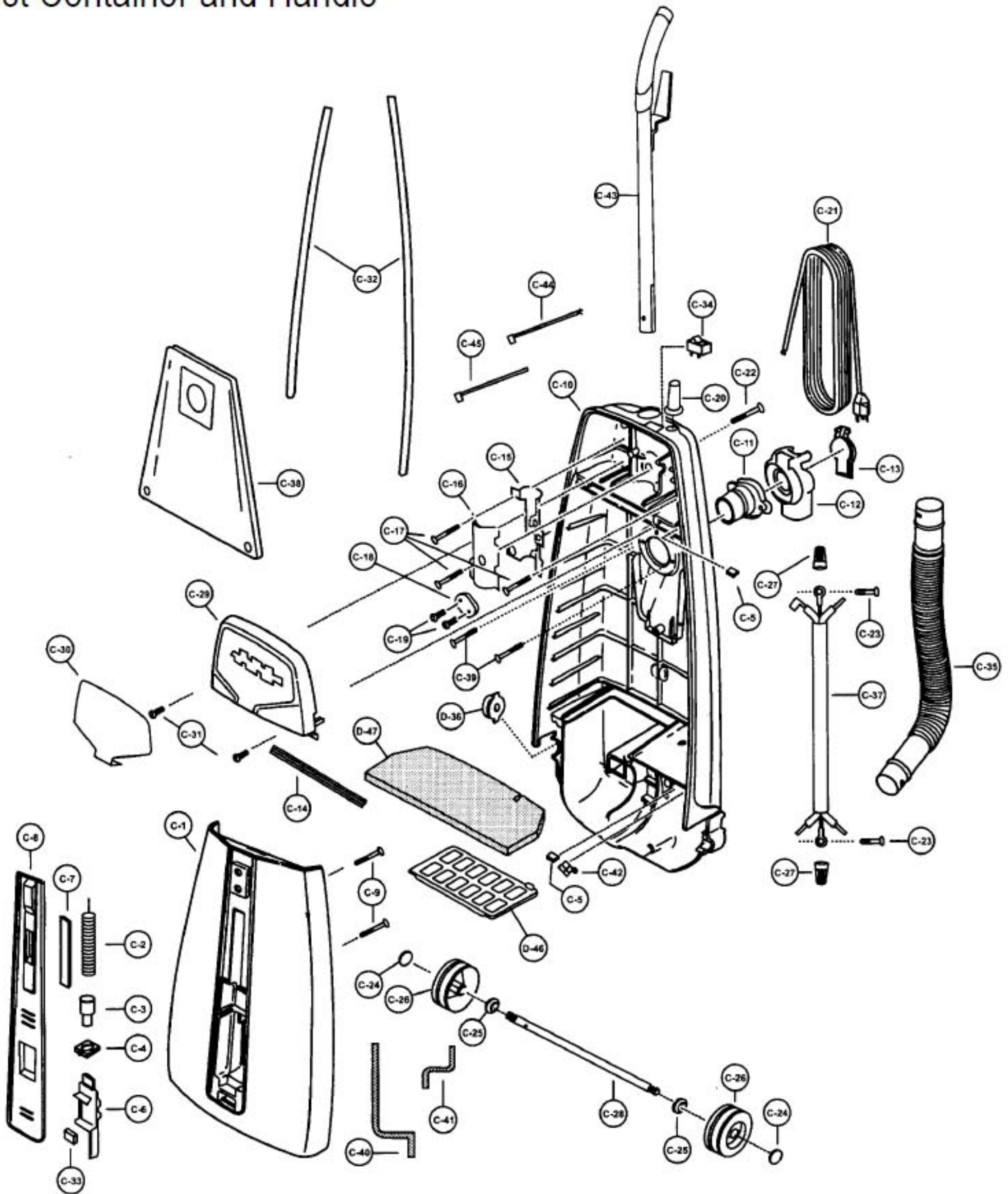


Index	Part No.	Description
1	P-111617	Nozzle housing
2	P-111618	Top mark
3	P-1035	Furniture guard
4	P-2731	Hose fitting plate
5	P-7030	Nozzle pipe
6	P-4305	Belt cover
7	P-10418	Lower plate assembly
8	P-10419	Lower plate
9	P-193	Packing (lower plate front)
10	P-7430	Packing (lower plate back)
11	P-503	Roller shaft
12	P-10420	Roller (floor nozzle)
13	P-04	Spring nut (push on)
14	P-9846	Stop latch spring
15	P-2751	Latch
16	P-111619	Window
17	P-683	Screw (nozzle housing)

Index	Part No.	Description
18	P-0016	Pedal
19	P-433	Frame
20	P-583	Pedal (spring)
21	P-513	Pedal shaft
22	P-1130	Rear belt cover
23	P-4003	E-clip
24	P-8172	Screw (pedal shaft)
25	P-111620	Flat belt
26	P-6140	Screw (hose fitting plate)
27	P-8172	Screw (frame)
28	P-083	Caution label
29	P-111621	Cover plate
30	P-9826	Caution label
31	P-0210	Body supporter
32	P-10422	Packing (lower plate)

Models: MC-V6603

Dust Container and Handle

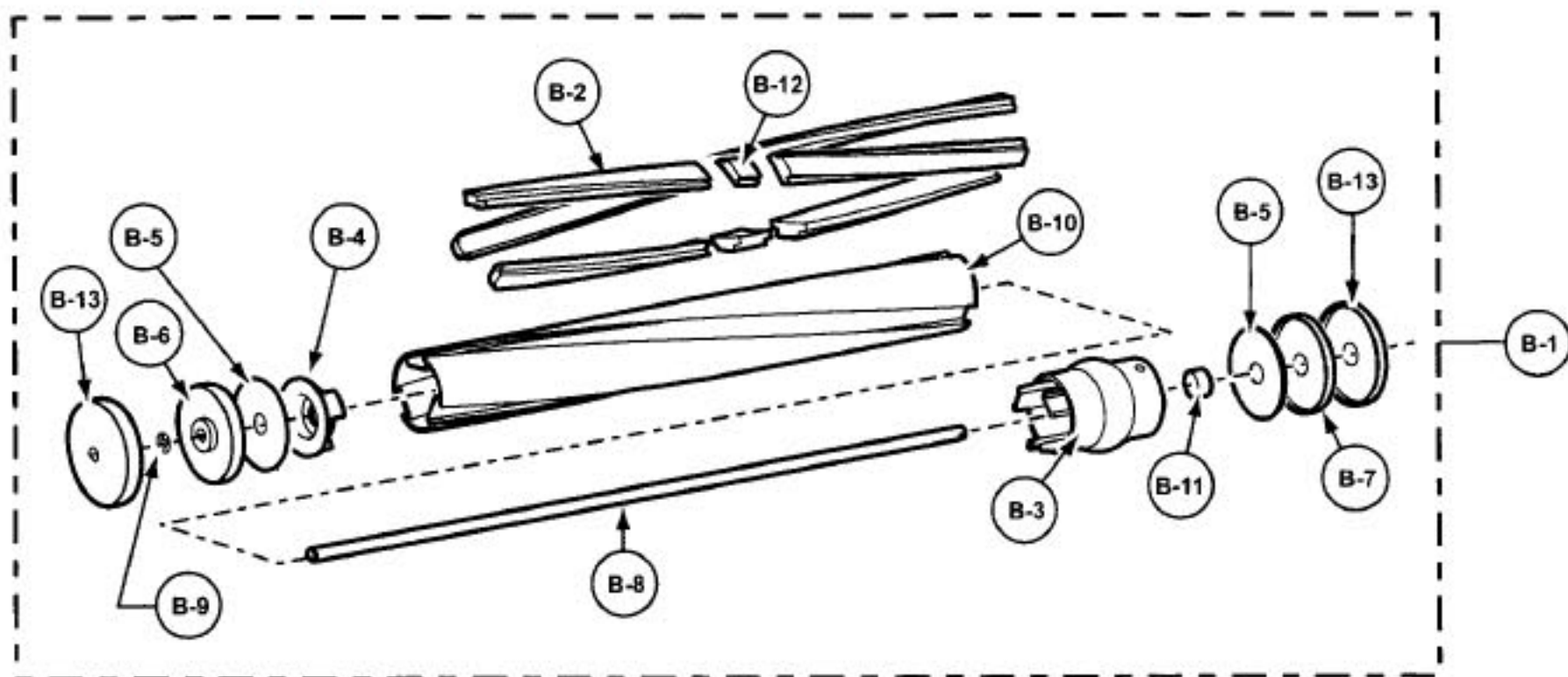


Dust Container and Handle

Index	Part No.	Description
1	P-111626	Dust cover
2	P-4105	Indicator spring
3	P-0049	Indicator lead
4	P-203	Indicator lead supporter
5	P-81105	Tight packing
6	P-10425	Suction control lever
7	P-0830	Indicator window
8	P-111627	Front cover
9	P-6140	Screw (dust cover)
10	P-10509	Dust container
11	P-10509	Suction inlet packing
12	P-111484	Suction inlet
13	P-02704	Cover
14	P-10428	Packing (switch cover)
15	P-10549	Handle supporter
16	P-6930	Handle fitting
17	P-6140	Screw (handle supporter)
18	P-62001	Cord stopper
19	P-6140	Screw
20	P-10389	Rubber protector
21	P-10823	Power cord
22	P-7330	Handle screw
23	P-9912	Scrw (grounding) motor handle fitting
24	P-74009	Stopper, wheel
25	P-6115	Washer

Index	Part No.	Description
26	P-111628	Wheel
27	P-111629	Wire nut
28	P-1605	Roller shaft
29	P-111630	Switch cover
30	P-111631	Ornamental plate
31	P-6140	Screw
32	P-2488	Packing (dust container)
33	P-0069	Packing (indicator)
34	P-7938	Switch - on/off
35	P-10432	Nozzle hose
36	P-2530	Plastic shaft
37	P-6405	Connection cord
38	P-111477	Dust bag type U6
39	P-6140	Screw (suction inlet packing)
40	P-5860	Packing (left)
41	P-3990	Packing (right)
42	P-62100	Cord stopper (wire bushing)
43	P-111485	Handle assembly
44	P-4410	Lead wire
45	P-00104	Tie cable
46	P-3200	Filter supporter
47	P-111632	Secondary Filter

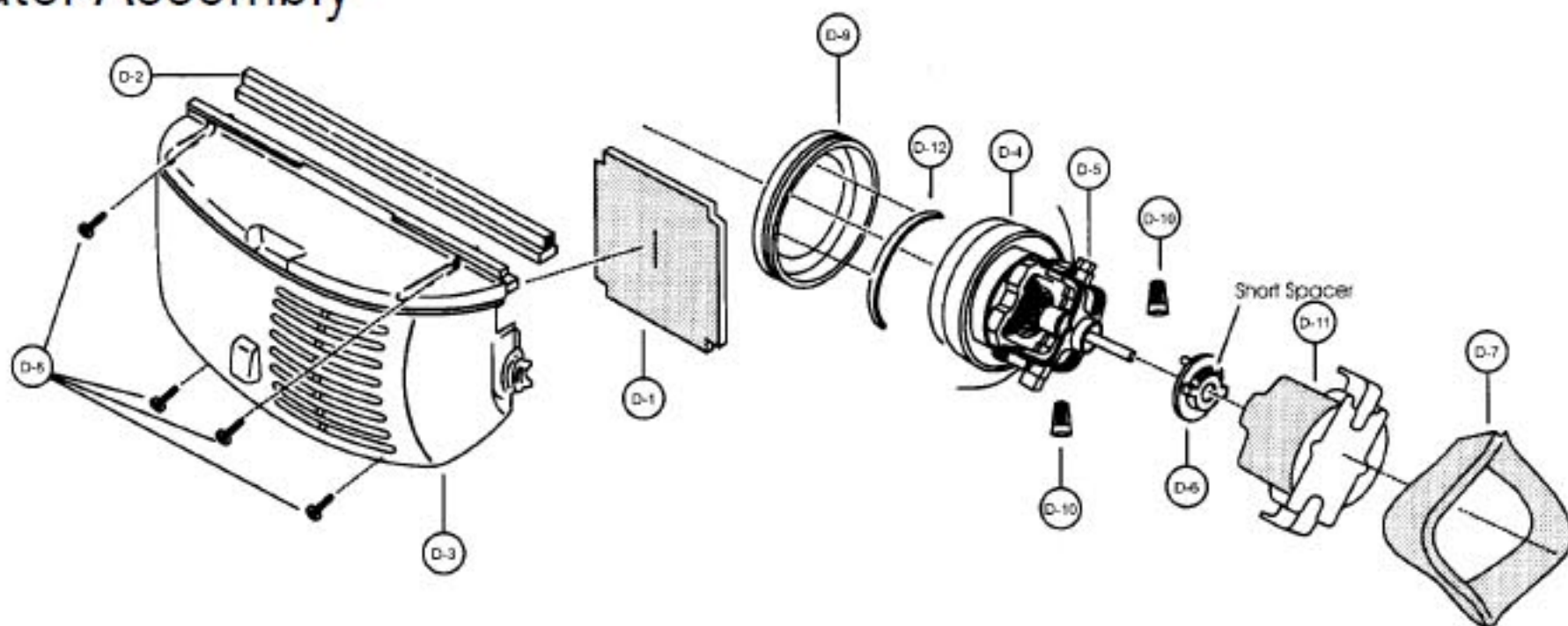
Agitator Assembly



Index	Part No.	Description
1	P-111622	Agitator assembly
2	P-111623	Brush (6 pcs)
3	P-111441	Agitator pulley
4	P-111513	Agitator holder
5	P-111515	Filter
6	P-111517	End cap (right)
7	P-111516	End cap (left)

Index	Part No.	Description
8	P-111750	Agitator shaft
9	P-111465	E-clip
10	P-111624	Brush holder
11	P-111751	Spacer
12	P-111724	Spacer (brushes)
13	P-111625	Agitator end cap

Agitator Assembly



Index	Part No.	Description
1	P-0232	Rear cover packing
2	P-10433	Motor case packing
3	P-111634	Motor case
4	P-92105	Fan motor unit
5	P-2720	Carbon brush (set)
6	P-10434	Motor support rubber (rear)

Index	Part No.	Description
7	P-9931	Noise suppressor
8	P-6140	Screw
9	P-24	Motor support rubber (front)
10	P-111633	Wire nut
11	P-111635	Motor cover
12	P-10435	Spacer; long