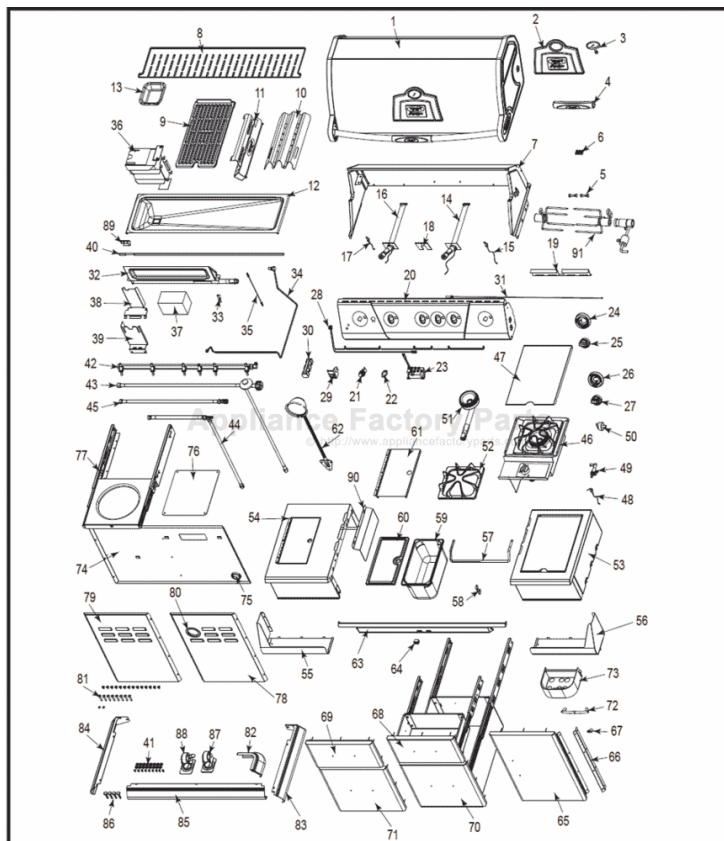


This Owner's Manual is provided and hosted by [Appliance Factory Parts](#).



Vermont Castings VCS5018 Owner's Manual

[Shop genuine replacement parts for Vermont Castings VCS5018](#)



[Find Your Vermont Castings Grill Parts - Select From 273 Models](#)

----- Manual continues below -----



TASTE THE
VERMONT CASTINGS
DIFFERENCE

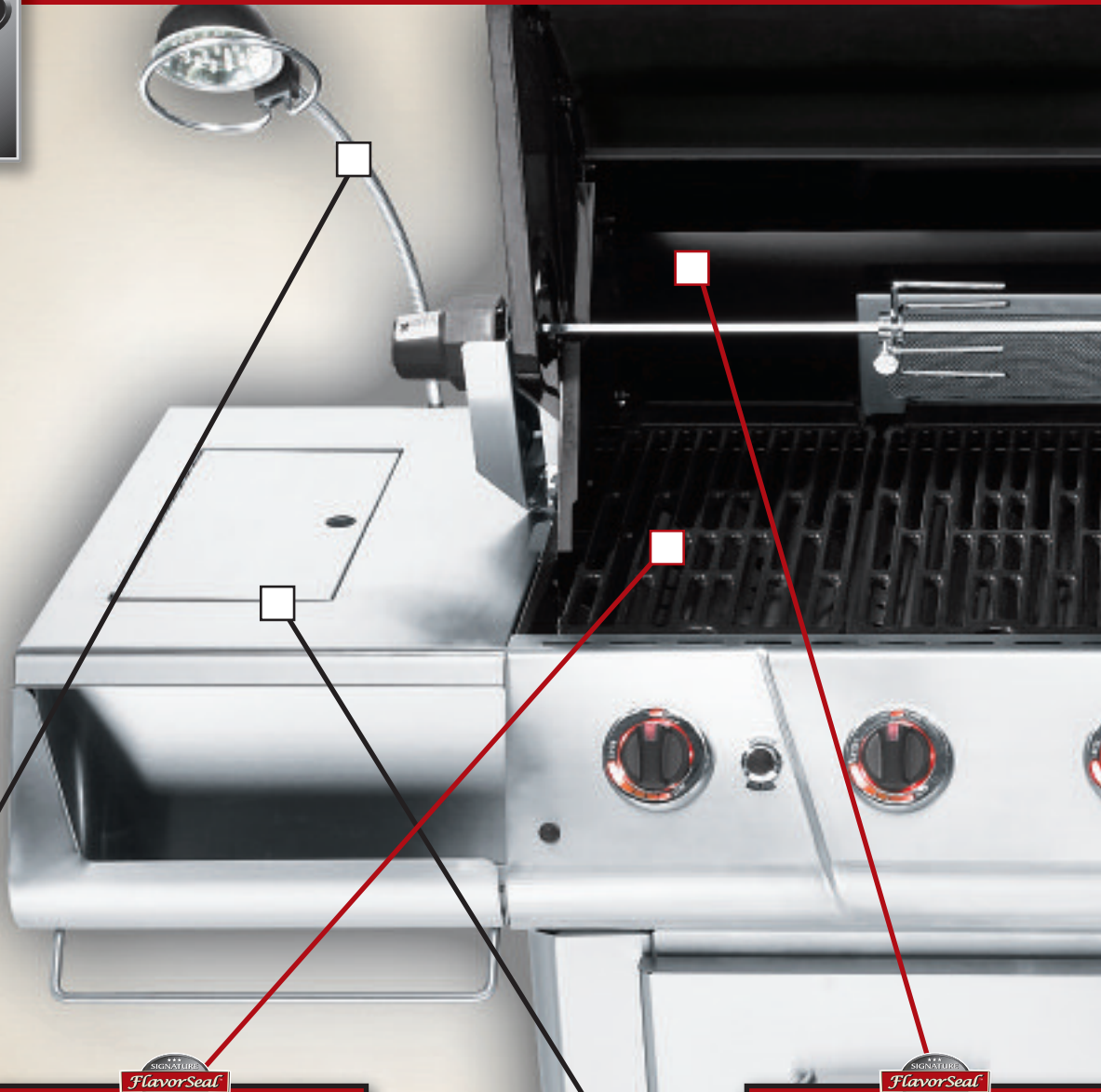
AND GET A TASTE
FOR THE BEST.



2008
GAS GRILLS,
SMOKERS &
ACCESSORIES

BRING OUT THE BEST IN YOUR

The FlavorSeal System and our exclusive cast



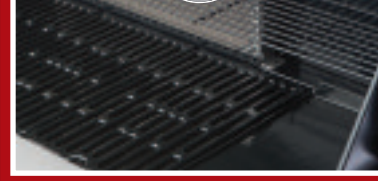
Innovative LED FLEX LIGHT allows you to see across the entire cooking surface in low or no light situations.



HEAVY CAST IRON PORCELAIN-COATED COOKING GRATES retain heat for even cooking.



MARINATING TRAY with REMOVABLE CUTTING BOARD for indoor or outdoor food prep.

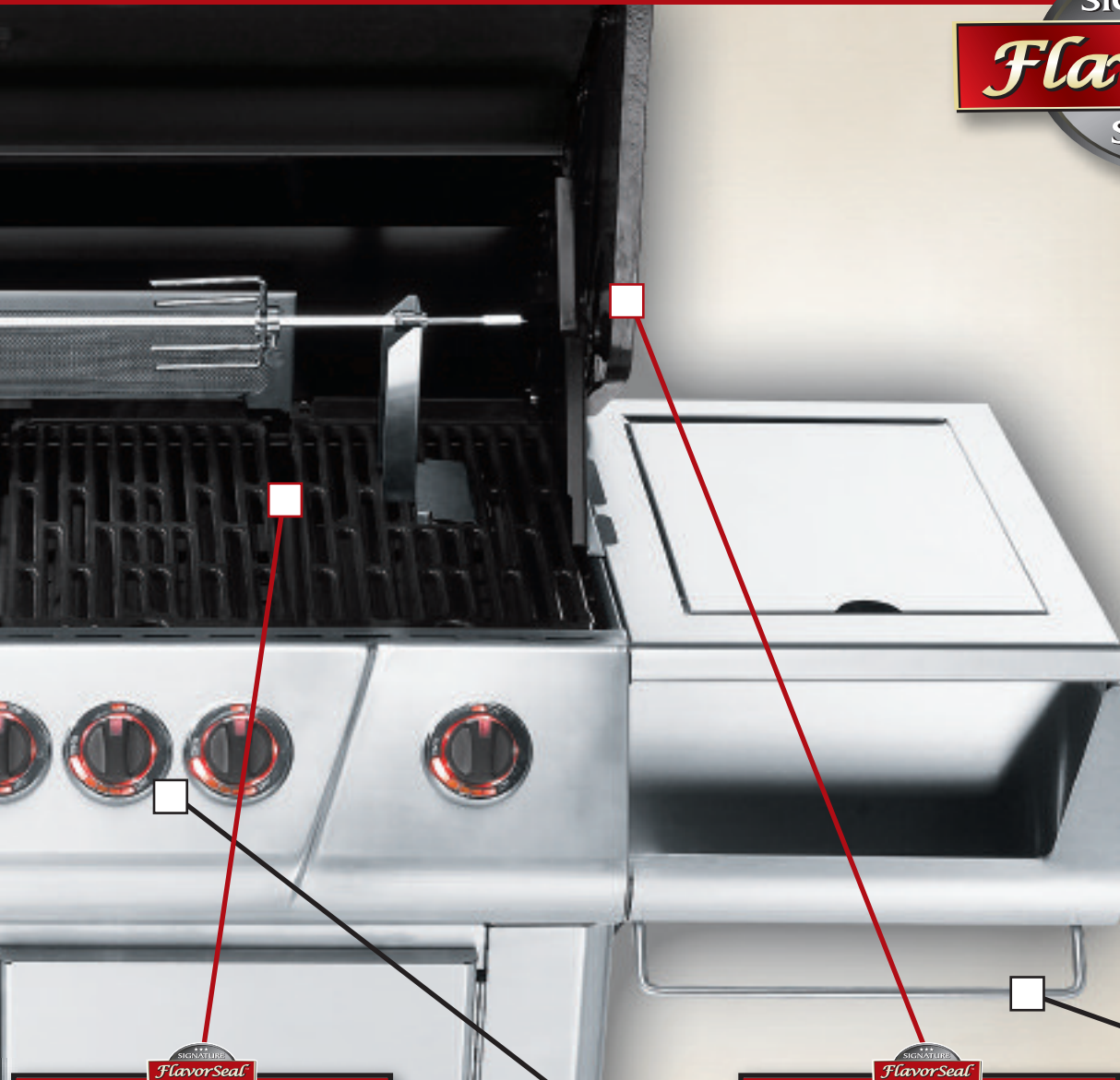


EXTRA DEEP FIRE BOX creates a convection-style cooking so food stays amazingly moist.

What makes the Vermont Castings Signature Series better than the rest? Our cast iron construction and our Signature FlavorSeal System. Once you've experienced our unique Signature FlavorSeal System firsthand - you'll be grilling like a pro. With the Vermont Casting's Signature FlavorSeal System, there's no second-guessing about cooking times and temperatures - all your foods will turn out moist, delicious and perfectly cooked every time!

OOD WITH VERMONT CASTINGS

iron construction makes all the difference.



SIGNATURE SEAR PLATES are optimally designed for heat distribution across the entire cooking surface.



"SOFTTOUCH" BACK-LIT DIALS makes cooking at night easier than ever with a bright orange glow.



REDESIGNED CAST IRON END CAPS help retain heat for superior flavor retention.



TOWEL BARS allow you to keep the grilling area clean and tidy.

And no more fussing about messy clean-up either. When you're barbecuing on Vermont Castings porcelain-coated, cast iron grill surfaces, clean-up's a breeze. From beginning to end, we've got your barbecue covered - so relax and enjoy! Treat your family, friends - and yourself - to the very best grilling experience there is. You'll find it here in the Vermont Castings Signature Series - and once you get a taste for the best, you'll be won over for good!



THE BEST IN CAST IRON GRILLING. NOW EVEN BETTER

Great performance and a great new look!

For decades, Vermont Castings has been building one of the most sought after gas grills there is, the Vermont Castings Signature Series. Winning awards from some of the top magazines around while bringing friends and families together for delicious, tender, perfectly prepared grilled foods is what we're all about. And this year, Vermont Castings Signature Series adds a great new look to the heritage, quality and workmanship that has made Vermont Castings the grill that brings out the best in you and your foods!





The Grand | SIGNATURE SERIES 5-BURNER GRILL



MARINATING TRAY with REMOVABLE CUTTING BOARD for indoor or outdoor food prep.



Innovative LED FLEX LIGHT allows you to see across the entire cooking surface in low or no light situations.



ROTISSERIE STORAGE keeps all accessories clean and stored within the unit for easy reach.



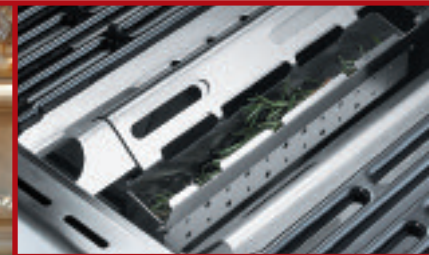
How can you improve on the best? Add even more unique and innovative features so you give grillers just the features they want. And, make it even better looking than before so you'll be even more proud to have a Vermont Castings Signature Series in your backyard!

- Larger cooking area - 651 sq. in. of primary cooking area and 286 sq. in. of secondary cooking space!
- 15,000 BTU Side Burner with Single Source Electronic Ignition
- 20,000 BTU Infra-Red Rotisserie Burner and Heavy Duty Rotisserie Kit
- Innovative LED Flex Light allows you to see across the entire grilling surface in low or no light situations

The Vermont Castings Signature Series 5-burner grill is one of the most sophisticated outdoor cooking systems you can buy- delivering outstanding heat retention, remarkable efficiency and, most important, consistently superior flavor. Available with a Stainless Steel Lid or Limited Edition Porcelain Enamelled lids in: Mica Black, Mica Green or Deep Bronze.



The Chef | SIGNATURE SERIES 4-BURNER GRILL



INTEGRATED SMOKER BOX lets you add authentic wood chip flavoring to your foods.



TANK PULL OUT TRAY gives you easy access to your LP tank when needed.



ROTISSERIE STORAGE keeps all accessories clean and stored within the unit for easy reach.

Cast Iron and Stainless Steel, this 4-burner grill is a monument to modern grilling. The perfect size for many different outdoor applications makes this the grill to envy.

- Larger cooking area - 493 sq. in. of primary cooking area and 214 sq. in. of secondary cooking space!
- 15,000 BTU Side Burner with Single Source Electronic Ignition
- 15,000 BTU Infra-Red Rotisserie Burner and Heavy Duty Rotisserie Kit
- Innovative LED Flex Light allows you to see across the entire grilling surface in low or no light situations

The Vermont Castings Signature Series 4-burner grill also features porcelain coated cast iron end caps and cooking grates with an extra deep firebox for outstanding heat retention and great flavor, every time. It all adds up to a great grill and a great value. Available with a Stainless Steel Lid or Limited Edition Porcelain Enameled lids in: Mica Black, Mica Green or Deep Bronze.

BRING OUT THE BEST IN YOUR FOOD. AND YOU.

Be the envy of your neighborhood! The most accomplished outdoor chefs can tell you the secret of perfectly-barbecued food: It's all in their Vermont Castings grills. And with good reason! We enjoy a proud heritage of creating the highest quality, cast-iron grills. With superior workmanship, distinctive design, and an award-winning cooking system, it's no wonder grilling perfectionists depend on their Signature Series Grills. Our grills have always brought out the best in all your foods – and that's why Vermont Castings Signature Series continues to be one of the most sought-after names in outdoor grilling!



THE BEST TASTE. THE PERFECT SIZE

Simply put, everything about it is more appealing!

From the strikingly handsome design to the incredibly moist and delicious meals you'll be cooking, a Vermont Castings Signature Series Grill represents our very best! Crafted in the Vermont Castings tradition; with quality workmanship and highest-grade cast iron to seal in foods' flavor, this award-winning grill will keep friends and family impressed, delighted and well-fed for years to come!

No need to wonder why Vermont Castings Signature Series Grills have such an unbeatable reputation – just one taste will tell you!





The Master | SIGNATURE SERIES 3-BURNER GRILL



TOWEL BARS allow you to keep the grilling area clean and tidy.



"SOFTTOUCH" BACK-LIT DIALS makes cooking at night easier than ever with a bright orange glow.



Sleek looking BOLTLESS CART DESIGN adds a built-in appliance look to your outdoor grill.



When you fit the amazing FlavorSeal Process into a 3-burner grill, you know you have the best value in grilling around. As with all Signature Series grills, this one is packed with features for the ultimate grilling experience.

- Larger cooking area - 440 sq. in. of primary cooking area and 190 sq. in. of secondary cooking space!
- 15,000 BTU Side Burner with Single Source Electronic Ignition
- Hidden stainless steel marinating tray with removable cutting board for indoor or outdoor food preparation
- Towel bars allow you to keep the grilling area clean and tidy

NeverFail Electronic Ignition, Porcelain-Coated Cast Iron cooking surface and Signature Cast Iron End Caps mean you get quality, dependability, and outstanding grilling results in a grill that fits almost anywhere. Available with a Stainless Steel Lid or Limited Edition Porcelain Enameled lids in: Mica Black, Mica Green or Deep Bronze.

BUILD IN THE VERMONT CASTINGS

A Vermont Castings Built-in Gas Grill is the perfect way to complement your outdoor living and add real value to your home! Plus, our special Lid Colors can match any

The Grand

SIGNATURE SERIES 5-BURNER BUILT-IN GRILL



(island not included)



OPTIONAL DOOR KITS give you lots of additional storage space for cooking utensils and more.



OPTIONAL 15,000 BTU SIDE BURNER is perfect for sautéing vegetables or preparing your secret sauce.



"SOFTTOUCH" BACK-LIT DIALS makes cooking at night easier than ever with a bright orange glow.

The ultimate in outdoor cooking, this 5-burner built-in gas grill is every inch a Vermont Castings Signature Series masterpiece. Installed into a complete outdoor cooking center, with superb features and excellent available options to make your outdoor entertaining the best it can be.

- Larger cooking area - 651 sq. in. of primary cooking area and 286 sq. in. of secondary cooking space!
- 20,000 BTU Infra-Red Rotisserie Burner and Heavy Duty Rotisserie Kit
- New curved handle design with soft grip keeps hands cool and comfortable
- Redesigned porcelain coated cast iron end caps makes the lid 25% easier to open

The Signature Series 5-burner grill is one of the most sophisticated outdoor cooking systems you can buy - and the center of an integrated outdoor environment for year-round cooking and enjoyment. Available with a Stainless Steel Lid or Limited Edition Porcelain Enameled lids in: Mica Black, Mica Green or Deep Bronze.

DIFFERENCE FOR THE BEST OF TIMES.

outdoor room or patio environment you have! Beautiful, solid and dependable, a Vermont Castings Signature Series Built-in Grill is a distinctive addition to any home.



The Master

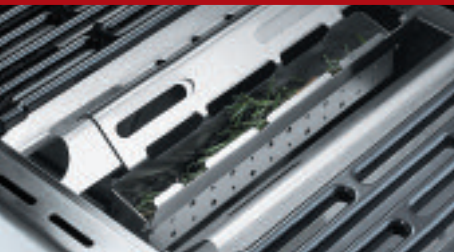
SIGNATURE SERIES 3-BURNER BUILT-IN GRILL



OPTIONAL LIMITED EDITION COLORED LIDS add style and keeps your grill looking great for years.



OPTIONAL MARINATING TRAY with REMOVABLE CUTTING BOARD for indoor or outdoor food prep.



INTEGRATED SMOKER BOX lets you add authentic wood chip flavoring to your foods.



(island not included)

More compact, but still a giant in built-in efficiency and beauty, this Signature Series 3-burner built-in gas grill makes it possible to create amazing meals for your friends and family.

- Larger cooking area - 440 sq. in. of primary cooking area and 190 sq. in. of secondary cooking space!
- 15,000 BTU Infra-Red Rotisserie Burner and Heavy Duty Rotisserie Kit
- Porcelain coated cast iron end caps and cooking grates for the ultimate cooking experience
- Soft Touch back-lit dials allow you to easily set your temperature in low or no-light situations

A built-in beauty that lets you enjoy outdoor barbecuing at its very best! Spending time outdoors has never tasted this good! Available with a Stainless Steel Lid or Limited Edition Porcelain Enameled lids in: Mica Black, Mica Green or Deep Bronze.



WHERE THERE'S SMOKE, THERE'S FLAVOR. SIGNATURE SERIES | SMOKER



CAST IRON WOOD CHIP BOX has a convenient sliding shelf for easy chip removal.

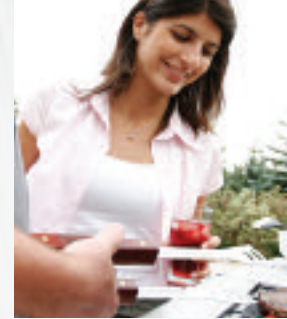


FULLY ADJUSTABLE DAMPERS allow for precise smoking.



ELECTRONIC IGNITION starts quickly every time - whenever you're ready.

With 17,500 BTUs and 3 adjustable dampers at your command, you'll really be smoking! Imagine the incredible meals you can create with 1033 square inches of cooking area and four adjustable, oven-style cooking grids! Our double-walled design provides excellent heat retention and the cast nameplate features a full-range heat indicator. Plus, the cast-iron wood chip box is set on a convenient sliding shelf for easy chip removal. The cast brass burner with adjustable control and quick-start electronic ignition make it easy to use. And the cool-grip locking front-door handle and wide-stance legs means it's sturdy and practical to use in any outdoor cooking area.



LIMITED EDITION LIDS FOR UNLIMITED STYLE

Mica Black Porcelain Enamel



Mica Green Porcelain Enamel

Deep Bronze Porcelain Enamel



Presenting our exclusive Limited Edition Porcelain Enameled Lids.

As beautiful as they are durable, these special lids can add the perfect touch of color to any outdoor setting. Pick the color that coordinates best with your outdoor furniture to give your deck, patio or terrace a sophisticated, designer-inspired ambience. Low-maintenance and easy-to-clean, these stylish lids will keep your grill looking good for years of grilling seasons!

Cast iron griddle plate
 Replace one cooking grate with this
 griddle and you've got the perfect outdoor
 stir-fry surface. Great for pizza, bacon
 & eggs in hardly any time at all.
 (VCSGP8A)



Signature Series Grill Knife
 Long wood handle, with sharp
 stainless steel blade and serrated tip.
 (VCK6A)

Deluxe Barbeque Cover
 Keep your grill protected and clean with
 a Deluxe Barbecue Cover to
 ward off the exterior elements.



Signature Series Grill Turner
 Long wood handle, with stainless steel
 serrated end and convenient
 built-in bottle opener.
 (VCS6A)

Signature Series Grill Mitt
 Durable Vermont Castings canvas mitt
 with comfortable soft cloth lining.
 (VCBM6A)



Signature Series Grill Fork
 Long wood handle, with 3 prong
 stainless steel tines.
 (VCF6A)

VERMONT CASTINGS SIGNATURE SERIES ACCESSORIES THE BEST TOOLS - FOR THE TOTAL EXPERIENCE

Complete your grilling experience with top-quality accessories from the Vermont Castings Signature Series.

Signature Series
 Grill Apron
 Durable Vermont Castings
 canvas apron with two
 large pockets. One size fits
 all. (VCBA6A)



Signature Series 4 Piece
 Tool Set with Case
 Includes Signature Series
 tongs, turner, fork,
 basting brush (boar bristle)
 and extra basting head
 (silicone). (VCTK6A)



Signature Series 2-Pack Replacement
 Basting Brush Heads
 Replace the heads on our basting brush with
 a new set of boar bristles.
 (VCBB6AR)



Signature Series Basting Brush
 Long wood handle, with angled stainless
 steel end. Removable basting heads
 (silicone or boar bristle).
 (VCBB6A)

Signature Series 4-Pack Skewer Set
 Elegant wood handle grilling skewers with flat
 stainless steel skewer ends so your food does
 not spin as you turn.
 (VCSK6A)



Signature Series Grill Tongs
 Long wood handle, with specially designed
 stainless steel ends for use as a turner
 or a tong. 3 settings to adjust to your
 hand size.
 (VCT6A)

Signature Series Stainless Steel Wipes
 A quick and easy way to clean, protect &
 restore the luster to your stainless steel grill.
 Contains: 25 wipes Size: 7 x 8 in
 (VCSSW6A)



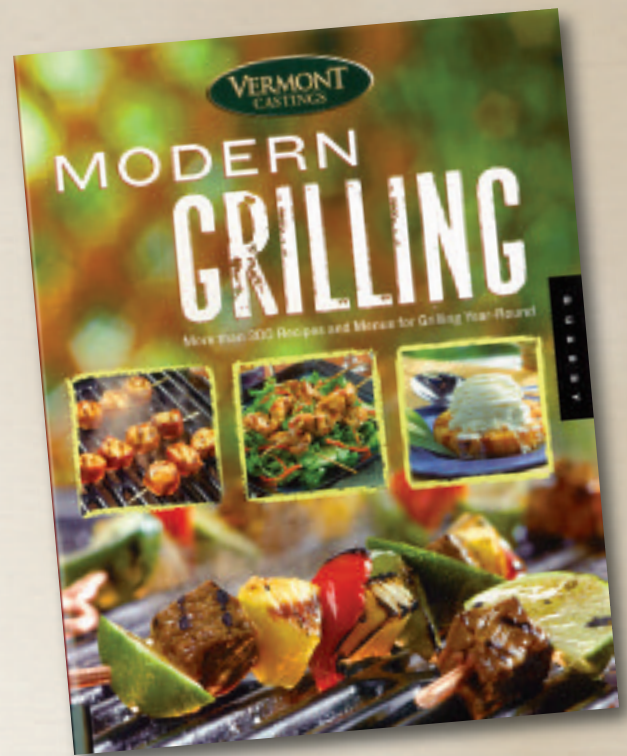
Signature Series Grill Cleaning Brush
 Long wood handle, with stainless steel
 scraper and brass bristles.
 (VCGB6A)

Ready to enjoy the best barbecue ever?

Before you fire up the grill, boot up the laptop and visit our website at www.myownbbq.com, here's where you'll find all the information you'll need about all our outstanding Vermont Castings Signature Series grills, smokers, patio fireplaces and accessories - including features, product guides and support. You'll also be able to find the Vermont Castings Signature Series dealers in your area and learn about our current promotional programs.

And that's not all. Check the website for tips on successful outdoor cooking, including a handy timing chart for perfectly grilled meats and side dishes every time. We also provide you with downloadable templates for invitations for your next barbecue - and even a step-by-step guide on how to plan and host the Best Barbecue you can imagine!

But the best thing about our website - and we think you'll agree - is our online Recipe Center.



Vermont Castings Modern Grilling Cookbook
(1-59253-328-0)

BEFORE YOU FIRE UP - READ ON. AND LOG ON.



Welcome to the Recipe Center!

Try new recipes - and trade your favorites! This interactive section gives you the chance to swap the best ideas with grilling fans everywhere! You'll find categories covering Appetizers, Fish & Seafood, Meats, Poultry - even Desserts and Sauces. With literally hundreds of recipes to choose from, there's no doubt you'll find the perfect dish for your next outdoor celebration.

The Recipe Center also allows you to save your favorites in the "My Cookbook" section. Share with the online grilling community and add a recipe of your own. Found a recipe that you really like? Go ahead and write a review and let everyone know that this recipe tops the list for your next BBQ feast!

It's all another part of our plan to give you a taste for the best - so visit us at www.myownbbq.com, fire up the grill and dine on!

TASTE THE VERMONT CASTINGS DIFFERENCE.



	THE GRAND	THE CHEF	THE MASTER	THE GRAND BUILT-IN	THE MASTER BUILT-IN
Stainless Steel Main Burners	5	4	3	5	3
Main Burners BTU's	62,500	50,000	37,500	62,500	37,500
Primary Cooking Area (sq. in.)	651	493	440	651	440
Porcelain Coated Warming Rack (sq. in.)	286	214	190	286	190
Total Cooking Area (sq. in.)	937	707	630	937	630
Porcelain Coated Cast Iron Cooking Grates	•	•	•	•	•
Signature Sear Plates (Stainless Steel)	•	•	•	•	•
15,000 BTU Side Burner with Single Source Electronic Ignition	•	•	•		
Infrared Rear Rotisserie Burner BTU's	20,000	15,000		20,000	15,000
Rotisserie Kit	•	•		•	•
Rotisserie Kit & Motor Storage Caddy	•	•		•	•
NeverFail Electronic Ignition System	•	•	•	•	•
Stainless Steel Lid With Double Wall Construction	•	•	•	•	•
Limited Edition Porcelain Enameled Lids					
Mica Green Porcelain Enameled Lid	•	•	•	•	•
Mica Black Porcelain Enameled Lid	•	•	•	•	•
Deep Bronze Porcelain Enameled Lid	•	•	•	•	•
Stainless Steel Enclosed Cart	•	•	•		
Additional Drawer Storage	•				
Curved Stainless Steel Lid Handle with Cool Comfort Grip	•	•	•	•	•
Heavy Duty Commercial Casters	•	•	•		
LED Flex Light	•	•			
Patented Soft Touch Back-lit Dials with Chrome Bezels	•	•	•	•	•
Integrated Tool Holders	•	•	•		
Stainless Steel Condiment Trays	•	•	•		
Towel Bars	•	•	•		
Stainless Steel Smoker Box	•	•		•	•
Stainless Steel Marinating Tray with Removable Cutting Board	•	•	•	(optional)	(optional)
Optional 15,000 BTU Side Burner				•	•
Tank Pull Out Tray	•	•			
Propane or Natural Gas	•	•	•	•	•

Note: For exact information on dimensions on all 2008 grills, please refer to www.myownbbq.com or www.vermontcastings.com

Your Dealer



CFM Corporation
2695 Meadowvale Blvd.
Mississauga, Ontario
Canada, L5N 8A3

ph: 905.858.8010
fx: 905.858.3966
www.vermontcastings.com
www.myownbbq.com



Vermont Castings is a registered trademark of CFM Corporation. V2 1001-0494 12/07

In the interest of constant product improvements, we reserve the right to change specifications without notice. Before installation, please read installation instructions and check all local building codes and gas regulators