

This Owner's Manual is provided and hosted by [Appliance Factory Parts](#).



ProFire PF27RIH Owner's Manual

[Shop genuine replacement parts for ProFire PF27RIH](#)



[Find Your ProFire Grill Parts - Select From 68 Models](#)

----- Manual continues below -----

ProFire[®] Grills

Perfection by Design

Professional Quality Grills for Your Backyard



An American Made Grill

ProFire® Grills

Perfection by Design



Restaurant Quality In Your Own Backyard Adds To The Value of Your Home

The ProFire built-in grills offer you truly diverse choices as you plan a custom outdoor kitchen, integrating beautifully with a wide variety of backyard décors. An outdoor kitchen is a valuable addition to the home investment...adding to its appeal and resale value.

Built-In or Portable

All ProFire grills can be mounted on a stylish stainless steel cart or built into a brick, stone or stucco enclosure. The only limit is your imagination. You can even build your enclosure out of wood by using our patented insulated sleeve.

HYBRID SERIES—2 in 1 Grill For Greater Cooking Versatility

Advantages of Infrared

- **Fast...**heats up in approximately 3 minutes
- **Intense heat—seals in meat juices** for better flavor
- **Time saver...**heats up faster with shorter grilling time
- High intense heat **reduces flare-ups** by vaporizing juices instantly
- Spacious 9" x 14-3/4" Infrared Burner
- 32,000 BTU Output



Infrared Plus...Stainless Steel Traditional Burners

Perfection By Design

All ProFire components are designed with the latest computer technology. Precision laser cutting ensures perfect fitting parts. ProFire grills are then hand finished and tested to give you super quality control and the most trouble-free grill in the business.

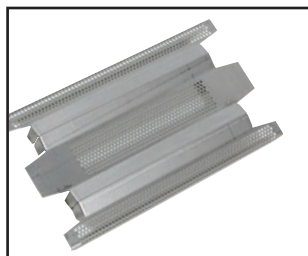
Standard on all ProFire Models:

- Commercial Grade Stainless Steel Construction
- 5/16" Commercial Grade Stainless Steel Cooking Grids
- Commercial Grade Stainless Steel Flavor Plates
- Lifetime Stainless Steel Burners
- Electronic Multiple Spark Ignition
- Dual Purpose Thermometer
- Stainless Steel Smoker Tray is Standard on the PF Series



Infra-Roast® Rotisserie Burner
Infrared rear burner heats up fast to quickly put a seal around meats for juicier and more moist results.

Standard on all "R" model number grills.



Flavor Plate
Flavor plates distribute heat evenly over the entire cooking surface and produce barbecue flavor while reducing flame-ups. The 16-gauge stainless steel flavor plates are self-cleaning and easy to maintain. Exclusive on the PF series.



ProFire Grill Lids
All ProFire grill lids have 2 layers of heavy-duty stainless steel that prevent heat loss and keep the outer lid cooler. The PF Series sports a seamless lid that is accented with a polished mirror finish. Lifetime Warranty.



Stainless Steel Cooking Grids
5/16" thick rods with spacing to accommodate small items. Lifetime Warranty.



PROFESSIONAL PF SERIES



48" Grill | 966 sq. inch cooking area

PF48G 88,000 BTUs without Infrared rear burner & heavy-duty rotisserie (*shown*)
PF48R 88,000 BTUs with Infrared rear burner and heavy-duty rotisserie
PF48IH 98,000 BTU Hybrid with rear burner and heavy-duty rotisserie
PF48GIH 98,000 BTU Hybrid without rear burner & heavy-duty rotisserie



48" Grill | 714 sq. inch cooking area

PF48S 66,000 BTUs with double side burner but without Infrared rear burner
PF48RS 66,000 BTUs with Infrared rear burner, heavy-duty rotisserie & double side burner (*shown*)
PF48RSIH 76,000 BTU Hybrid with Infrared rear burner, heavy-duty rotisserie & double side burner
PF48SIH 76,000 BTU Hybrid with double side burner, without rear burner & heavy-duty rotisserie



36" Grill | 714 sq. inch cooking area

PF36G 66,000 BTUs without Infrared rear burner & heavy-duty rotisserie (*shown*)
PF36R 66,000 BTUs with Infrared rear burner & heavy-duty rotisserie
PF36RIH 76,000 BTUs Hybrid with rear burner & heavy-duty rotisserie
PF36GIH 76,000 BTUs Hybrid without rear burner & heavy-duty rotisserie



27" Grill | 525 sq. inch cooking area

PF27G 44,000 BTUs without Infrared rear burner & rotisserie
PF27R 44,000 BTUs with Infrared rear burner & heavy-duty rotisserie (*shown*)
PF27RIH 54,000 BTU Hybrid with Infrared rear burner & heavy-duty rotisserie
PF27GIH 54,000 BTU Hybrid without rear burner & rotisserie

PERFORMANCE SERIES—Counter Top Trim Kit Included



42" Grill | 60,000 BTUs | 665 sq. inch cooking area

PERF42G without Infrared rear burner and heavy-duty rotisserie
PERF42R with Infrared rear burner and heavy-duty rotisserie (*shown*)



30" Grill | 40,000 BTUs | 450 sq. inch cooking area

PERF30G without Infrared rear burner, heavy-duty rotisserie
PERF30R with Infrared rear burner, heavy-duty rotisserie (*shown*)

PROFESSIONAL PF SERIES PORTABLE CARTS



27" Stainless Steel Cart

(Fits PF27R, PF27G, PF27RIH, PF27GIH)

PF27SSCBN For use with Natural Gas Grills. Includes 12-Foot Hose with Quick Disconnect & 1 Stainless Steel Fold-Down Shelf

PF27SSCBP For use with LP Gas Grills & Includes 1 Stainless Steel Fold-Down Shelf



36" Stainless Steel Cart

(Fits PF36R, PF36G, PF36RIH, PF36GIH)

PF36SSCBN For use with Natural Gas Grills. Includes 12-Foot Hose with Quick Disconnect & 2 Stainless Steel Fold-Down Shelves

PF36SSCBP For use with LP Gas Grills. Includes LP Tank Slide-Out Drawer & 2 Stainless Steel Fold-Down Shelves



48" Stainless Steel Cart

(Fits PF48R, PF48G, PF48RS, PF48S, PF48RIH, PF48GIH, PF48RSIH, PF48SIH)

PF48SSCBN For use with Natural Gas Grills. Includes 12-Foot Hose with Quick Disconnect & 2 Stainless Steel Fold-Down Shelves

PF48SSCBP For use with LP Gas Grills. Includes LP Tank Slide-Out Drawer & 2 Stainless Steel Fold-Down Shelves

PERFORMANCE SERIES PORTABLE CARTS



30" Stainless Steel Cart

(Fits PERF30R, PERF30G Grill Heads)

PERF30SSCBN For use with Natural Gas Grills. Includes 12-Foot Hose with Quick Disconnect and 2 Stainless Steel Fixed Shelves.

PERF30SSCBP For use with LP Gas Grills. Includes 2 Stainless Steel Fixed Shelves.



42" Stainless Steel Cart

(Fits PERF42R, PERF42G Grill Heads)

PERF42SSCBN For use with Natural Gas Grills. Includes 12-Foot Hose with Quick Disconnect and 2 Stainless Steel Fixed Shelves.

PERF42SSCBP For use with LP Gas Grills. Includes 2 Stainless Steel Fixed Shelves.



Professional PF Series Tank Slide-Out Drawer

Easy LP tank access features a large drawer that fully extends offering direct access to refill and replace an LP tank. Included on models PF48SSCBP and PF36SSCBP.

Model PF27SSCBP offers a door with access to the LP tank.

PREMIUM ACCESSORIES FOR OUTDOOR ENTERTAINMENT CENTERS

All of our accessories are also made in the USA and are constructed of Heavy-Duty 18-Gauge Commercial Grade Stainless Steel. Covered by a Limited Lifetime Warranty.

DRAWERS



Item Number	Description	Opening Needed
PFSINGLEDRAWER	Single Drawer (Overall Dimension 17" W x 9" H)	14-1/2" W x 6-1/2" H
PFDLDRW	Double Drawer (Overall Dimension 17" W x 17" H)	14-1/2" W x 14-1/2" H
PFDRAWER	Triple Drawer (Overall Dimension 17" W x 28" H)	14-1/2" W x 25-1/2" H

DOORS*



Item Number	Description	Opening Needed
PFDD	Large Double Doors (Overall Dimension 36" W x 20" H)	32-1/4" W x 16-1/4" H
PFSMDD	Small Double Doors (Overall Dimension 29" W x 18" H)	27-1/4" W x 16-1/2" H
PFSD2014R	Small Vertical Single Door-Right Open (Overall Dimension 18" W x 24" H)	14-1/4" W x 20-1/4" H
PFSD2014L	Small Vertical Single Door-Left Open (Overall Dimension 18" W x 24" H)	14-1/4" W x 20-1/4" H
PFSWD1420R	Small Horizontal Single Door-Right Open (Overall Dimension 24" W x 18" H)	20-1/4" W x 14-1/4" H
PFSWD1420L	Small Horizontal Single Door-Left Open (Overall Dimension 24" W x 18" H)	20-1/4" W x 14-1/4" H
PFDOR/DRAWER	Door and Drawer Combination (Overall Dimension 17" W x 28" H)	14-1/4" W x 25-1/2" H
PFLGDOORR	Large Vertical Single Door-Right Open (Overall Dimension 17" W x 28" H)	14-1/2" W x 25-1/2" H
PFLGDOORL	Large Vertical Single Door-Left Open (Overall Dimension 17" W x 28" H)	14-1/2" W x 25-1/2" H

*Door images above are shown with left opening.

COMBO UNITS



Item Number	Description	Opening Needed
PFPULLOUT	Pull-Out Trash Compartment (Overall Dimension 17" W x 28" H)	14-1/2" W x 25-1/2" H
PFCOCKTAILPRO	Cocktail Pro (Overall Dimension 19" W x 10" H x 24-1/2" D)	19-1/4" W x 10" H x 24-1/2" D
PFCOOLER	Cooler Pull-Out (Overall Dimension 30" W x 20" H)	27-1/2" W x 17-1/2" H

STAINLESS STEEL SIDE BURNERS



Double Side Burner

PFDSB | 30,000 BTUs

Overall Dimension: 12-1/2" W x 10" H x 24-1/2" D

Opening Needed: 12-3/4" W x 10" H x 24-1/2" D

Single Side Burner

PFSSB | 15,000 BTUs

Overall Dimension: 12-1/2" W x 10" H x 14-1/4" D

Opening Needed: 12-3/4" W x 10" H x 14-1/4" D

Drop-In Single Side Burner

PFLSB | 14,000 BTUs | Includes Counter Top Trim Kit

Overall Dimension: 9-3/4" W x 15-3/4" D

Opening Needed: 8-3/4" W x 14-1/4" D

Side Burner Installation Kit

PFSBK | for stainless steel carts

Fits PFDSB and PFSSB only

PATENTED INSULATED SLEEVE

When installing the grill into an island made of combustible materials, an insulated sleeve is required.



PFIS27 | 27" grill
30" W x 11-1/8" H x 24-1/2" D

PFIS30 | 30" grill
29-1/4" W x 9-3/4" H x 21" D

PFIS36 | 36" grill
39" W x 11-1/8" H x 24-1/2" D

PFIS42 | 42" grill
41-1/4" W x 9-3/4" H x 21" D

PFIS48 | 48" grill
51" W x 11-1/8" H x 24-1/2" D

PFISSSB | single side burner
15-3/4" W x 11-1/8" H x 14" D

PFISDSB | double side burner
15-3/4" W x 11-1/8" H x 24-1/2" D

GRILL COVERS



All-Weather Grill Covers

PFVC26C	Fits 26" Cart Model Grill
PFVC27B	Fits 27" Built-In Grill
PFVC27C	Fits 27" Cart Model Grill
PFVC30B	Fits 30" Built-In Grill
PFVC36C	Fits 36" Cart Model Grill
PFVC36B	Fits 36" Built-In Grill
PFVC48C	Fits 48" Cart Model Grill
PFVC48B	Fits 48" Built-In Grill
PFVC48BS	Fits 36" Built-In Grill with Side Burner
PFVC48CS	Fits 36" Cart Model Grill with Side Burner

GRIDDLES

Cast Aluminum Griddle

PFGRIDDLE27	Fits 27" Grill
PFGRIDDLE36	Fits 36" or 48" Grill
PFGRIDDLE26	Fits 26" or 30" Grill



OPTIONAL COUNTER TOP TRIM KITS

Our Counter Top Trim Kits are constructed of heavy-duty commercial grade stainless steel.

Grill Trim Kits

PFTRIM27 For 27" Grill

PFTRIM36 For 36" Grill

PFTRIM48 For 48" Grill

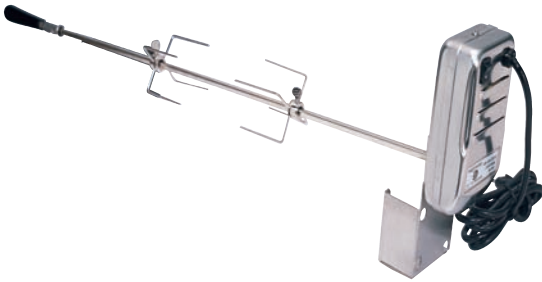
Side Burner Trim Kits

PFTRIMDS
For Double Side Burner

PFTRIMSS
For Single Side Burner

ROTISSERIE KITS

Heavy-Duty Rotisserie Kits



27" Rotisserie Kit with Heavy-Duty Stainless Steel Motor

PFR27 25 lb. capacity

30" Rotisserie Kit with Heavy-Duty Stainless Steel Motor

PFR30 25 lb. capacity

Super Heavy-Duty Rotisserie Kits



27" Rotisserie Kit with Heavy-Duty Stainless Steel Motor

PFR27HD 50 lb. capacity

36" Rotisserie Kit with Heavy-Duty Stainless Steel Motor

PFR36HD 50 lb. capacity

48" Rotisserie Kit with Heavy-Duty Stainless Steel Motor

PFR48HD 50 lb. capacity

MOTORS



PFR80-97
(Motor Bracket Included)

Heavy-Duty Stainless Steel Motor

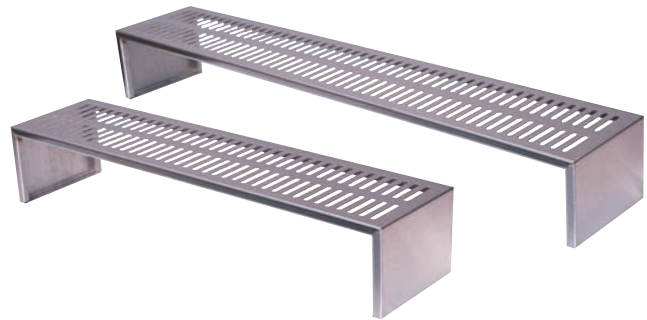
PFR80-97 25 lb. capacity

PFR80-97HD 50 lb. capacity



PFR80-97HD

WARMING RACKS



Warming Shelf/Rack

PF27WRM Fits 27" Grill

PF30WRM Fits 26" and 30" Grill

PF36WRM Fits 36" Grill

PF48WRM Fits 48" Grill

INDOOR GRILL



30" Grill | Stainless Steel Indoor Gas Grill*

PFINDOOR (shown)

Opening needed: 28-3/8" W x 12" H x 19-3/8" D

Available Accessories

PFR0TIS Indoor Heavy-Duty Rotisserie Kit

PFGRIDDLE Cast Aluminum Griddle

*Vent Required

PROFESSIONAL PF SERIES STAINLESS STEEL GRILL HEAD INFORMATION

Built-In – Optional Counter Top Trim Kits available for these grills.

	PF48R	PF48RIH	PF48G	PF48GIH	PF48RS	PF48RSIH	PF48S	PF48SIH
BTU's	88,000	98,000	88,000	98,000	66,000	76,000	66,000	76,000
# of Burners (Traditional)	8	6	8	6	6	4	6	4
# of Burners (Infrared)	-	2	-	2	-	2	-	2
# of Controlled Cooking Zones	4	4	4	4	3	3	3	3
Infrared Rear Burner BTU's	13,500	13,500	-	-	11,500	11,500	-	-
Heavy-Duty Rotisserie	✓	✓	-	-	✓	✓	-	-
Side Burner	-	-	-	-	Double	Double	Double	Double
Side Burner BTU's	-	-	-	-	30,000	30,000	30,000	30,000
Cooking Area	966 Sq Inch	966 Sq Inch	966 Sq Inch	966 Sq Inch	714 Sq Inch	714 Sq Inch	714 Sq Inch	714 Sq Inch
Overall Dimensions	48" W x 10" H x 24-1/2" D	48" W x 10" H x 24-1/2" D	48" W x 10" H x 24-1/2" D	48" W x 10" H x 24-1/2" D	48" W x 10" H x 24-1/2" D	48" W x 10" H x 24-1/2" D	48" W x 10" H x 24-1/2" D	48" W x 10" H x 24-1/2" D
Opening Needed	48-1/4" W x 10" H x 24-1/2" D	48-1/4" W x 10" H x 24-1/2" D	48-1/4" W x 10" H x 24-1/2" D	48-1/4" W x 10" H x 24-1/2" D	48-1/4" W x 10" H x 24-1/2" D	48-1/4" W x 10" H x 24-1/2" D	48-1/4" W x 10" H x 24-1/2" D	48-1/4" W x 10" H x 24-1/2" D

PERFORMANCE SERIES STAINLESS STEEL GRILL HEAD INFORMATION

Built-In – Counter Top Trim Kits Included

	PERF42R	PERF42G	PERF30R	PERF30G
BTU's	60,000	60,000	40,000	40,000
# of Burners	3	3	2	2
# of Controlled Cooking Zones	3	3	2	2
Infrared Rear Burner BTU's	11,500	-	10,000	-
Heavy-Duty Rotisserie	✓	-	✓	-
Side Burner	-	-	-	-
Side Burner BTU's	-	-	-	-
Cooking Area	655 Sq Inch	655 Sq Inch	450 Sq Inch	450 Sq Inch
Overall Dimensions	42-1/2" W x 8-1/2" H x 24-1/2" D	42-1/2" W x 8-1/2" H x 24-1/2" D	30" W x 8-1/2" H x 24-1/2" D	30" W x 8-1/2" H x 24-1/2" D
Opening Needed	39" W x 8-5/8" H x 19-3/4" D	39" W x 8-5/8" H x 19-3/4" D	26-3/4" W x 8-5/8" H x 19-3/4" D	26-3/4" W x 8-5/8" H x 19-3/4" D

*Please specify Natural or LP Gas
when ordering any grills*

ProFire® Grills
Perfection by Design

PF36R	PF36RIH	PF36G	PF36GIH	PF27R	PF27RIH	PF27G	PF27GIH
66,000	76,000	66,000	76,000	44,000	54,000	44,000	54,000
6	4	6	4	4	2	4	2
-	2	-	2	-	2	-	2
3	3	3	3	2	2	2	2
11,500	11,500	-	-	11,500	11,500	-	-
✓	✓	-	-	✓	✓	-	-
-	-	-	-	-	-	-	-
-	-	-	-	-	-	-	-
714 Sq Inch	714 Sq Inch	714 Sq Inch	714 Sq Inch	525 Sq Inch	525 Sq Inch	525 Sq Inch	525 Sq Inch
36" W x 10" H x 24-1/2" D	36" W x 10" H x 24-1/2" D	27" W x 10" H x 24-1/2" D	27" W x 10" H x 24-1/2" D	27" W x 10" H x 24-1/2" D	27" W x 10" H x 24-1/2" D	27" W x 10" H x 24-1/2" D	27" W x 10" H x 24-1/2" D
36-1/4" W x 10" H x 24-1/2" D	36-1/4" W x 10" H x 24-1/2" D	36-1/4" W x 10" H x 24-1/2" D	36-1/4" W x 10" H x 24-1/2" D	27-1/4" W x 10" H x 24-1/2" D	27-1/4" W x 10" H x 24-1/2" D	27-1/4" W x 10" H x 24-1/2" D	27-1/4" W x 10" H x 24-1/2" D

PROFESSIONAL SERIES PORTABLE CARTS

	DESCRIPTION	FITS GRILL HEAD	Nat. Gas	LP Gas
PF48SSCBN	48" cart includes 12-foot hose with quick disconnect and 2 stainless steel fold-down shelves	PF48R, PF48G, PF48S, PF48RS, PF48GIH, PF48RSIH, PF48SIH. PF48RIH	✓	
PF48SSCBP	48" cart with LP tank slide-out drawer and 2 stainless steel fold-down shelves	PF48R, PF48G, PF48S, PF48RS, PF48GIH, PF48RSIH, PF48SIH. PF48RIH		✓
PF36SSCBN	36" cart includes 12-foot hose with quick disconnect and 2 stainless steel fold-down shelves	PF36R, PF36G, PF36RIH, PF36GIH	✓	
PF36SSCBP	36" cart with LP tank slide-out drawer and 2 stainless steel fold-down shelves	PF36R, PF36G, PF36RIH, PF36GIH		✓
PF27SSCBN	27" cart includes 12-foot hose with quick disconnect and 1 stainless steel fold-down shelf	PF27R, PF27G, PF27RIH, PF27GIH	✓	
PF27SSCBP	27" cart with 1 stainless steel fold-down shelf 1 stainless steel fold-down shelf	PF27R, PF27G, PF27RIH, PF27GIH		✓

PERFORMANCE SERIES PORTABLE CARTS

	DESCRIPTION	FITS GRILL HEAD	Nat. Gas	LP Gas
PERF42SSCBN	42" cart includes 12-foot hose with quick disconnect and 2 stainless steel fixed shelves	PERF42R, PERF42G	✓	
PERF42SSCBP	42" cart with 2 stainless steel fixed shelves	PERF42R, PERF42G		✓
PERF30SSCBN	30" cart includes 12-foot hose with quick disconnect and 2 stainless steel fixed shelves	PERF30R, PERF30G	✓	
PERF30SSCBP	30" cart with 2 stainless steel fixed shelves	PERF30R, PERF30G		✓

ProFire Grills are made in the U.S.A. and the beauty goes far beyond its appearance. Each ProFire grill is precision engineered and constructed of quality materials. The result is a wide selection of grills that offer long-term performance and a lifetime of reliable use.

LIFETIME WARRANTY

PROFIRE STAINLESS STEEL GRILL HOUSING, STAINLESS STEEL BURNERS, STAINLESS STEEL COOKING GRIDS, STAINLESS STEEL PORTABLE CARTS, STAINLESS STEEL HOUSING ON SIDE BURNERS AND ALL STAINLESS STEEL ISLAND ACCESSORIES ARE WARRANTED AS LONG AS THE ORIGINAL PURCHASER OWNS THE GRILL

3-YEAR WARRANTY

PROFIRE STAINLESS STEEL FLAVOR PLATES, CAST IRON BURNERS AND MANIFOLD ASSEMBLIES ARE WARRANTED FOR THREE YEARS

1-YEAR WARRANTY

IGNITION SYSTEMS, DRAWER SLIDES, KNOBS AND GRILL ACCESSORIES ARE WARRANTED FOR ONE YEAR

For additional questions or information on ProFire's complete warranty please ask your ProFire sales representative or contact us directly.

ProFire[®] Grills *Perfection by Design*

A division of Modern Home Products Corp.

5565 North 124th Street • Butler, WI 53007

Phone: 262.781.4657 • 888.781.4657

Fax: 262.781.3965 • 888.781.3965

email: info@profiregrills.com • www.profiregrills.com

Other Quality Products From Modern Home Products



Heritage Series



For Most Major Brands



Outdoor Lighting

Prices and specifications subject to change without notice