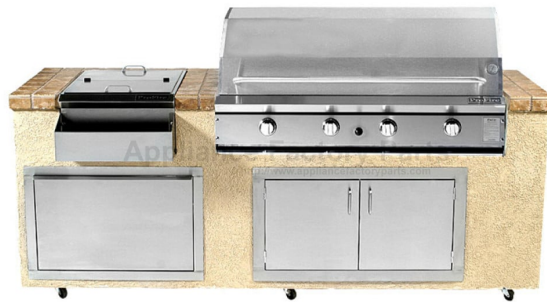


This Owner's Manual is provided and hosted by [Appliance Factory Parts](#).



# ProFire PF48GIH Owner's Manual

[Shop genuine replacement parts for ProFire PF48GIH](#)



[Find Your ProFire Grill Parts - Select From 68 Models](#)

----- Manual continues below -----

# ProFire<sup>®</sup> Grills

*Perfection by Design*

Professional Quality Grills for Your Backyard



*An American Made Grill*

# ProFire® Grills

*Perfection by Design*



## Restaurant Quality In Your Own Backyard Adds To The Value of Your Home

The ProFire built-in grills offer you truly diverse choices as you plan a custom outdoor kitchen, integrating beautifully with a wide variety of backyard décors. An outdoor kitchen is a valuable addition to the home investment...adding to its appeal and resale value.

### Built-In or Portable

All ProFire grills can be mounted on a stylish stainless steel cart or built into a brick, stone or stucco enclosure. The only limit is your imagination. You can even build your enclosure out of wood by using our patented insulated sleeve.

## HYBRID SERIES—2 in 1 Grill For Greater Cooking Versatility

### Advantages of Infrared

- **Fast...**heats up in approximately 3 minutes
- **Intense heat—seals in meat juices** for better flavor
- **Time saver...**heats up faster with shorter grilling time
- High intense heat **reduces flare-ups** by vaporizing juices instantly
- Spacious 9" x 14-3/4" Infrared Burner
- 32,000 BTU Output



*Infrared Plus...Stainless Steel Traditional Burners*

## Perfection By Design

*All ProFire components are designed with the latest computer technology. Precision laser cutting ensures perfect fitting parts. ProFire grills are then hand finished and tested to give you super quality control and the most trouble-free grill in the business.*

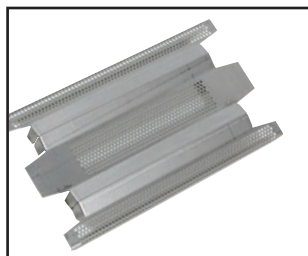
### Standard on all ProFire Models:

- Commercial Grade Stainless Steel Construction
- 5/16" Commercial Grade Stainless Steel Cooking Grids
- Commercial Grade Stainless Steel Flavor Plates
- Lifetime Stainless Steel Burners
- Electronic Multiple Spark Ignition
- Dual Purpose Thermometer
- Stainless Steel Smoker Tray is Standard on the PF Series



**Infra-Roast® Rotisserie Burner**  
Infrared rear burner heats up fast to quickly put a seal around meats for juicier and more moist results.

**Standard on all "R" model number grills.**



**Flavor Plate**  
Flavor plates distribute heat evenly over the entire cooking surface and produce barbecue flavor while reducing flame-ups. The 16-gauge stainless steel flavor plates are self-cleaning and easy to maintain. Exclusive on the PF series.



**ProFire Grill Lids**  
All ProFire grill lids have 2 layers of heavy-duty stainless steel that prevent heat loss and keep the outer lid cooler. The PF Series sports a seamless lid that is accented with a polished mirror finish. Lifetime Warranty.



**Stainless Steel Cooking Grids**  
5/16" thick rods with spacing to accommodate small items. Lifetime Warranty.



## PROFESSIONAL PF SERIES



### 48" Grill | 966 sq. inch cooking area

**PF48G** 88,000 BTUs without Infrared rear burner & heavy-duty rotisserie (*shown*)  
**PF48R** 88,000 BTUs with Infrared rear burner and heavy-duty rotisserie  
**PF48IH** 98,000 BTU Hybrid with rear burner and heavy-duty rotisserie  
**PF48GIH** 98,000 BTU Hybrid without rear burner & heavy-duty rotisserie



### 48" Grill | 714 sq. inch cooking area

**PF48S** 66,000 BTUs with double side burner but without Infrared rear burner  
**PF48RS** 66,000 BTUs with Infrared rear burner, heavy-duty rotisserie & double side burner (*shown*)  
**PF48RSIH** 76,000 BTU Hybrid with Infrared rear burner, heavy-duty rotisserie & double side burner  
**PF48SIH** 76,000 BTU Hybrid with double side burner, without rear burner & heavy-duty rotisserie



### 36" Grill | 714 sq. inch cooking area

**PF36G** 66,000 BTUs without Infrared rear burner & heavy-duty rotisserie (*shown*)  
**PF36R** 66,000 BTUs with Infrared rear burner & heavy-duty rotisserie  
**PF36RIH** 76,000 BTUs Hybrid with rear burner & heavy-duty rotisserie  
**PF36GIH** 76,000 BTUs Hybrid without rear burner & heavy-duty rotisserie



### 27" Grill | 525 sq. inch cooking area

**PF27G** 44,000 BTUs without Infrared rear burner & rotisserie  
**PF27R** 44,000 BTUs with Infrared rear burner & heavy-duty rotisserie (*shown*)  
**PF27RIH** 54,000 BTU Hybrid with Infrared rear burner & heavy-duty rotisserie  
**PF27GIH** 54,000 BTU Hybrid without rear burner & rotisserie

## PERFORMANCE SERIES—Counter Top Trim Kit Included



### 42" Grill | 60,000 BTUs | 665 sq. inch cooking area

**PERF42G** without Infrared rear burner and heavy-duty rotisserie  
**PERF42R** with Infrared rear burner and heavy-duty rotisserie (*shown*)



### 30" Grill | 40,000 BTUs | 450 sq. inch cooking area

**PERF30G** without Infrared rear burner, heavy-duty rotisserie  
**PERF30R** with Infrared rear burner, heavy-duty rotisserie (*shown*)

## PROFESSIONAL PF SERIES PORTABLE CARTS



### 27" Stainless Steel Cart

(Fits PF27R, PF27G, PF27RIH, PF27GIH)

**PF27SSCBN** For use with Natural Gas Grills. Includes 12-Foot Hose with Quick Disconnect & 1 Stainless Steel Fold-Down Shelf

**PF27SSCBP** For use with LP Gas Grills & Includes 1 Stainless Steel Fold-Down Shelf



### 36" Stainless Steel Cart

(Fits PF36R, PF36G, PF36RIH, PF36GIH)

**PF36SSCBN** For use with Natural Gas Grills. Includes 12-Foot Hose with Quick Disconnect & 2 Stainless Steel Fold-Down Shelves

**PF36SSCBP** For use with LP Gas Grills. Includes LP Tank Slide-Out Drawer & 2 Stainless Steel Fold-Down Shelves



### 48" Stainless Steel Cart

(Fits PF48R, PF48G, PF48RS, PF48S, PF48RIH, PF48GIH, PF48RSIH, PF48SIH)

**PF48SSCBN** For use with Natural Gas Grills. Includes 12-Foot Hose with Quick Disconnect & 2 Stainless Steel Fold-Down Shelves

**PF48SSCBP** For use with LP Gas Grills. Includes LP Tank Slide-Out Drawer & 2 Stainless Steel Fold-Down Shelves

## PERFORMANCE SERIES PORTABLE CARTS



### 30" Stainless Steel Cart

(Fits PERF30R, PERF30G Grill Heads)

**PERF30SSCBN** For use with Natural Gas Grills. Includes 12-Foot Hose with Quick Disconnect and 2 Stainless Steel Fixed Shelves.

**PERF30SSCBP** For use with LP Gas Grills. Includes 2 Stainless Steel Fixed Shelves.



### 42" Stainless Steel Cart

(Fits PERF42R, PERF42G Grill Heads)

**PERF42SSCBN** For use with Natural Gas Grills. Includes 12-Foot Hose with Quick Disconnect and 2 Stainless Steel Fixed Shelves.

**PERF42SSCBP** For use with LP Gas Grills. Includes 2 Stainless Steel Fixed Shelves.



### Professional PF Series Tank Slide-Out Drawer

Easy LP tank access features a large drawer that fully extends offering direct access to refill and replace an LP tank. Included on models PF48SSCBP and PF36SSCBP.

Model PF27SSCBP offers a door with access to the LP tank.

# PREMIUM ACCESSORIES FOR OUTDOOR ENTERTAINMENT CENTERS

All of our accessories are also made in the USA and are constructed of Heavy-Duty 18-Gauge Commercial Grade Stainless Steel. Covered by a Limited Lifetime Warranty.

## DRAWERS



Item Number	Description	Opening Needed
<b>PFSINGLEDRAWER</b>	Single Drawer (Overall Dimension 17" W x 9" H)	14-1/2" W x 6-1/2" H
<b>PFDDLDRW</b>	Double Drawer (Overall Dimension 17" W x 17" H)	14-1/2" W x 14-1/2" H
<b>PFDRAWER</b>	Triple Drawer (Overall Dimension 17" W x 28" H)	14-1/2" W x 25-1/2" H

## DOORS\*



Item Number	Description	Opening Needed
<b>PFDD</b>	Large Double Doors (Overall Dimension 36" W x 20" H)	32-1/4" W x 16-1/4" H
<b>PFSMDD</b>	Small Double Doors (Overall Dimension 29" W x 18" H)	27-1/4" W x 16-1/2" H
<b>PFSD2014R</b>	Small Vertical Single Door-Right Open (Overall Dimension 18" W x 24" H)	14-1/4" W x 20-1/4" H
<b>PFSD2014L</b>	Small Vertical Single Door-Left Open (Overall Dimension 18" W x 24" H)	14-1/4" W x 20-1/4" H
<b>PFSWD1420R</b>	Small Horizontal Single Door-Right Open (Overall Dimension 24" W x 18" H)	20-1/4" W x 14-1/4" H
<b>PFSWD1420L</b>	Small Horizontal Single Door-Left Open (Overall Dimension 24" W x 18" H)	20-1/4" W x 14-1/4" H
<b>PFDOR/DRAWER</b>	Door and Drawer Combination (Overall Dimension 17" W x 28" H)	14-1/4" W x 25-1/2" H
<b>PFLGDOORR</b>	Large Vertical Single Door-Right Open (Overall Dimension 17" W x 28" H)	14-1/2" W x 25-1/2" H
<b>PFLGDOORL</b>	Large Vertical Single Door-Left Open (Overall Dimension 17" W x 28" H)	14-1/2" W x 25-1/2" H

\*Door images above are shown with left opening.

## COMBO UNITS



Item Number	Description	Opening Needed
<b>PFPULLOUT</b>	Pull-Out Trash Compartment (Overall Dimension 17" W x 28" H)	14-1/2" W x 25-1/2" H
<b>PFCOCKTAILPRO</b>	Cocktail Pro (Overall Dimension 19" W x 10" H x 24-1/2" D)	19-1/4" W x 10" H x 24-1/2" D
<b>PFCOOLER</b>	Cooler Pull-Out (Overall Dimension 30" W x 20" H)	27-1/2" W x 17-1/2" H

## STAINLESS STEEL SIDE BURNERS



### Double Side Burner

**PFDSB** | 30,000 BTUs

Overall Dimension: 12-1/2" W x 10" H x 24-1/2" D

Opening Needed: 12-3/4" W x 10" H x 24-1/2" D

### Single Side Burner

**PFSSB** | 15,000 BTUs

Overall Dimension: 12-1/2" W x 10" H x 14-1/4" D

Opening Needed: 12-3/4" W x 10" H x 14-1/4" D

### Drop-In Single Side Burner

**PFLSB** | 14,000 BTUs | Includes Counter Top Trim Kit

Overall Dimension: 9-3/4" W x 15-3/4" D

Opening Needed: 8-3/4" W x 14-1/4" D

### Side Burner Installation Kit

**PFSBK** | for stainless steel carts

Fits PFDSB and PFSSB only

## PATENTED INSULATED SLEEVE

When installing the grill into an island made of combustible materials, an insulated sleeve is required.



**PFIS27** | 27" grill  
30" W x 11-1/8" H x 24-1/2" D

**PFIS30** | 30" grill  
29-1/4" W x 9-3/4" H x 21" D

**PFIS36** | 36" grill  
39" W x 11-1/8" H x 24-1/2" D

**PFIS42** | 42" grill  
41-1/4" W x 9-3/4" H x 21" D

**PFIS48** | 48" grill  
51" W x 11-1/8" H x 24-1/2" D

**PFISSSB** | single side burner  
15-3/4" W x 11-1/8" H x 14" D

**PFISDSB** | double side burner  
15-3/4" W x 11-1/8" H x 24-1/2" D

## GRILL COVERS



### All-Weather Grill Covers

<b>PFVC26C</b>	Fits 26" Cart Model Grill
<b>PFVC27B</b>	Fits 27" Built-In Grill
<b>PFVC27C</b>	Fits 27" Cart Model Grill
<b>PFVC30B</b>	Fits 30" Built-In Grill
<b>PFVC36C</b>	Fits 36" Cart Model Grill
<b>PFVC36B</b>	Fits 36" Built-In Grill
<b>PFVC48C</b>	Fits 48" Cart Model Grill
<b>PFVC48B</b>	Fits 48" Built-In Grill
<b>PFVC48BS</b>	Fits 36" Built-In Grill with Side Burner
<b>PFVC48CS</b>	Fits 36" Cart Model Grill with Side Burner

## GRIDDLES

### Cast Aluminum Griddle

<b>PFGRIDDLE27</b>	Fits 27" Grill
<b>PFGRIDDLE36</b>	Fits 36" or 48" Grill
<b>PFGRIDDLE26</b>	Fits 26" or 30" Grill



## OPTIONAL COUNTER TOP TRIM KITS

Our Counter Top Trim Kits are constructed of heavy-duty commercial grade stainless steel.

### Grill Trim Kits

**PFTRIM27** For 27" Grill

**PFTRIM36** For 36" Grill

**PFTRIM48** For 48" Grill

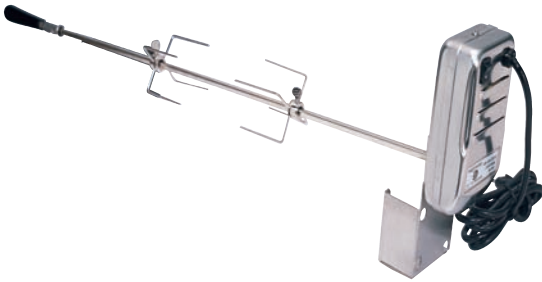
### Side Burner Trim Kits

**PFTRIMDS**  
For Double Side Burner

**PFTRIMSS**  
For Single Side Burner

## ROTISSERIE KITS

### Heavy-Duty Rotisserie Kits



#### 27" Rotisserie Kit with Heavy-Duty Stainless Steel Motor

**PFR27** 25 lb. capacity

#### 30" Rotisserie Kit with Heavy-Duty Stainless Steel Motor

**PFR30** 25 lb. capacity

### Super Heavy-Duty Rotisserie Kits



#### 27" Rotisserie Kit with Heavy-Duty Stainless Steel Motor

**PFR27HD** 50 lb. capacity

#### 36" Rotisserie Kit with Heavy-Duty Stainless Steel Motor

**PFR36HD** 50 lb. capacity

#### 48" Rotisserie Kit with Heavy-Duty Stainless Steel Motor

**PFR48HD** 50 lb. capacity

## MOTORS



PFR80-97  
(Motor Bracket Included)

#### Heavy-Duty Stainless Steel Motor

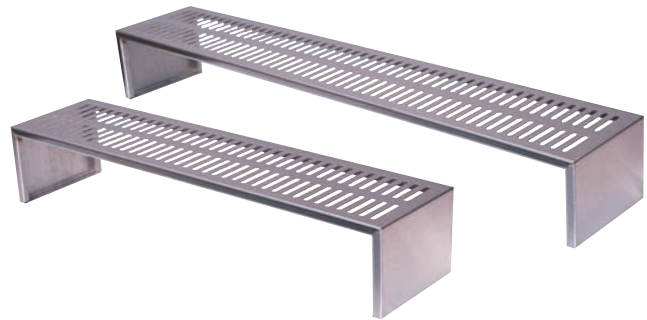
**PFR80-97** 25 lb. capacity

**PFR80-97HD** 50 lb. capacity



PFR80-97HD

## WARMING RACKS



#### Warming Shelf/Rack

**PF27WRM** Fits 27" Grill

**PF30WRM** Fits 26" and 30" Grill

**PF36WRM** Fits 36" Grill

**PF48WRM** Fits 48" Grill

## INDOOR GRILL



#### 30" Grill | Stainless Steel Indoor Gas Grill\*

##### PFINDOOR (shown)

Opening needed: 28-3/8" W x 12" H x 19-3/8" D

Available Accessories

**PFR0TIS** Indoor Heavy-Duty Rotisserie Kit

**PFGRIDDLE** Cast Aluminum Griddle

\*Vent Required

## PROFESSIONAL PF SERIES STAINLESS STEEL GRILL HEAD INFORMATION

**Built-In – Optional Counter Top Trim Kits available for these grills.**

	PF48R	PF48RIH	PF48G	PF48GIH	PF48RS	PF48RSIH	PF48S	PF48SIH
<b>BTU's</b>	88,000	98,000	88,000	98,000	66,000	76,000	66,000	76,000
<b># of Burners (Traditional)</b>	8	6	8	6	6	4	6	4
<b># of Burners (Infrared)</b>	-	2	-	2	-	2	-	2
<b># of Controlled Cooking Zones</b>	4	4	4	4	3	3	3	3
<b>Infrared Rear Burner BTU's</b>	13,500	13,500	-	-	11,500	11,500	-	-
<b>Heavy-Duty Rotisserie</b>	✓	✓	-	-	✓	✓	-	-
<b>Side Burner</b>	-	-	-	-	Double	Double	Double	Double
<b>Side Burner BTU's</b>	-	-	-	-	30,000	30,000	30,000	30,000
<b>Cooking Area</b>	966 Sq Inch	966 Sq Inch	966 Sq Inch	966 Sq Inch	714 Sq Inch	714 Sq Inch	714 Sq Inch	714 Sq Inch
<b>Overall Dimensions</b>	48" W x 10" H x 24-1/2" D	48" W x 10" H x 24-1/2" D	48" W x 10" H x 24-1/2" D	48" W x 10" H x 24-1/2" D	48" W x 10" H x 24-1/2" D	48" W x 10" H x 24-1/2" D	48" W x 10" H x 24-1/2" D	48" W x 10" H x 24-1/2" D
<b>Opening Needed</b>	48-1/4" W x 10" H x 24-1/2" D	48-1/4" W x 10" H x 24-1/2" D	48-1/4" W x 10" H x 24-1/2" D	48-1/4" W x 10" H x 24-1/2" D	48-1/4" W x 10" H x 24-1/2" D	48-1/4" W x 10" H x 24-1/2" D	48-1/4" W x 10" H x 24-1/2" D	48-1/4" W x 10" H x 24-1/2" D

## PERFORMANCE SERIES STAINLESS STEEL GRILL HEAD INFORMATION

**Built-In – Counter Top Trim Kits Included**

	PERF42R	PERF42G	PERF30R	PERF30G
<b>BTU's</b>	60,000	60,000	40,000	40,000
<b># of Burners</b>	3	3	2	2
<b># of Controlled Cooking Zones</b>	3	3	2	2
<b>Infrared Rear Burner BTU's</b>	11,500	-	10,000	-
<b>Heavy-Duty Rotisserie</b>	✓	-	✓	-
<b>Side Burner</b>	-	-	-	-
<b>Side Burner BTU's</b>	-	-	-	-
<b>Cooking Area</b>	655 Sq Inch	655 Sq Inch	450 Sq Inch	450 Sq Inch
<b>Overall Dimensions</b>	42-1/2" W x 8-1/2" H x 24-1/2" D	42-1/2" W x 8-1/2" H x 24-1/2" D	30" W x 8-1/2" H x 24-1/2" D	30" W x 8-1/2" H x 24-1/2" D
<b>Opening Needed</b>	39" W x 8-5/8" H x 19-3/4" D	39" W x 8-5/8" H x 19-3/4" D	26-3/4" W x 8-5/8" H x 19-3/4" D	26-3/4" W x 8-5/8" H x 19-3/4" D

*Please specify Natural or LP Gas  
when ordering any grills*

**ProFire® Grills**  
Perfection by Design

PF36R	PF36RIH	PF36G	PF36GIH	PF27R	PF27RIH	PF27G	PF27GIH
66,000	76,000	66,000	76,000	44,000	54,000	44,000	54,000
6	4	6	4	4	2	4	2
-	2	-	2	-	2	-	2
3	3	3	3	2	2	2	2
11,500	11,500	-	-	11,500	11,500	-	-
✓	✓	-	-	✓	✓	-	-
-	-	-	-	-	-	-	-
-	-	-	-	-	-	-	-
714 Sq Inch	714 Sq Inch	714 Sq Inch	714 Sq Inch	525 Sq Inch	525 Sq Inch	525 Sq Inch	525 Sq Inch
36" W x 10" H x 24-1/2" D	36" W x 10" H x 24-1/2" D	27" W x 10" H x 24-1/2" D	27" W x 10" H x 24-1/2" D	27" W x 10" H x 24-1/2" D	27" W x 10" H x 24-1/2" D	27" W x 10" H x 24-1/2" D	27" W x 10" H x 24-1/2" D
36-1/4" W x 10" H x 24-1/2" D	36-1/4" W x 10" H x 24-1/2" D	36-1/4" W x 10" H x 24-1/2" D	36-1/4" W x 10" H x 24-1/2" D	27-1/4" W x 10" H x 24-1/2" D	27-1/4" W x 10" H x 24-1/2" D	27-1/4" W x 10" H x 24-1/2" D	27-1/4" W x 10" H x 24-1/2" D

## PROFESSIONAL SERIES PORTABLE CARTS

	DESCRIPTION	FITS GRILL HEAD	Nat. Gas	LP Gas
<b>PF48SSCBN</b>	48" cart includes 12-foot hose with quick disconnect and 2 stainless steel fold-down shelves	PF48R, PF48G, PF48S, PF48RS, PF48GIH, PF48RSIH, PF48SIH. PF48RIH	✓	
<b>PF48SSCBP</b>	48" cart with LP tank slide-out drawer and 2 stainless steel fold-down shelves	PF48R, PF48G, PF48S, PF48RS, PF48GIH, PF48RSIH, PF48SIH. PF48RIH		✓
<b>PF36SSCBN</b>	36" cart includes 12-foot hose with quick disconnect and 2 stainless steel fold-down shelves	PF36R, PF36G, PF36RIH, PF36GIH	✓	
<b>PF36SSCBP</b>	36" cart with LP tank slide-out drawer and 2 stainless steel fold-down shelves	PF36R, PF36G, PF36RIH, PF36GIH		✓
<b>PF27SSCBN</b>	27" cart includes 12-foot hose with quick disconnect and 1 stainless steel fold-down shelf	PF27R, PF27G, PF27RIH, PF27GIH	✓	
<b>PF27SSCBP</b>	27" cart with 1 stainless steel fold-down shelf 1 stainless steel fold-down shelf	PF27R, PF27G, PF27RIH, PF27GIH		✓

## PERFORMANCE SERIES PORTABLE CARTS

	DESCRIPTION	FITS GRILL HEAD	Nat. Gas	LP Gas
<b>PERF42SSCBN</b>	42" cart includes 12-foot hose with quick disconnect and 2 stainless steel fixed shelves	PERF42R, PERF42G	✓	
<b>PERF42SSCBP</b>	42" cart with 2 stainless steel fixed shelves	PERF42R, PERF42G		✓
<b>PERF30SSCBN</b>	30" cart includes 12-foot hose with quick disconnect and 2 stainless steel fixed shelves	PERF30R, PERF30G	✓	
<b>PERF30SSCBP</b>	30" cart with 2 stainless steel fixed shelves	PERF30R, PERF30G		✓

*ProFire Grills are made in the U.S.A. and the beauty goes far beyond its appearance. Each ProFire grill is precision engineered and constructed of quality materials. The result is a wide selection of grills that offer long-term performance and a lifetime of reliable use.*

#### **LIFETIME WARRANTY**

PROFIRE STAINLESS STEEL GRILL HOUSING, STAINLESS STEEL BURNERS, STAINLESS STEEL COOKING GRIDS, STAINLESS STEEL PORTABLE CARTS, STAINLESS STEEL HOUSING ON SIDE BURNERS AND ALL STAINLESS STEEL ISLAND ACCESSORIES ARE WARRANTED AS LONG AS THE ORIGINAL PURCHASER OWNS THE GRILL

#### **3-YEAR WARRANTY**

PROFIRE STAINLESS STEEL FLAVOR PLATES, CAST IRON BURNERS AND MANIFOLD ASSEMBLIES ARE WARRANTED FOR THREE YEARS

#### **1-YEAR WARRANTY**

IGNITION SYSTEMS, DRAWER SLIDES, KNOBS AND GRILL ACCESSORIES ARE WARRANTED FOR ONE YEAR

*For additional questions or information on ProFire's complete warranty please ask your ProFire sales representative or contact us directly.*

# **ProFire<sup>®</sup> Grills** *Perfection by Design*

**A division of Modern Home Products Corp.**

5565 North 124th Street • Butler, WI 53007

Phone: 262.781.4657 • 888.781.4657

Fax: 262.781.3965 • 888.781.3965

email: [info@profiregrills.com](mailto:info@profiregrills.com) • [www.profiregrills.com](http://www.profiregrills.com)

### *Other Quality Products From Modern Home Products*



Heritage Series



For Most Major Brands



Outdoor Lighting

*Prices and specifications subject to change without notice*