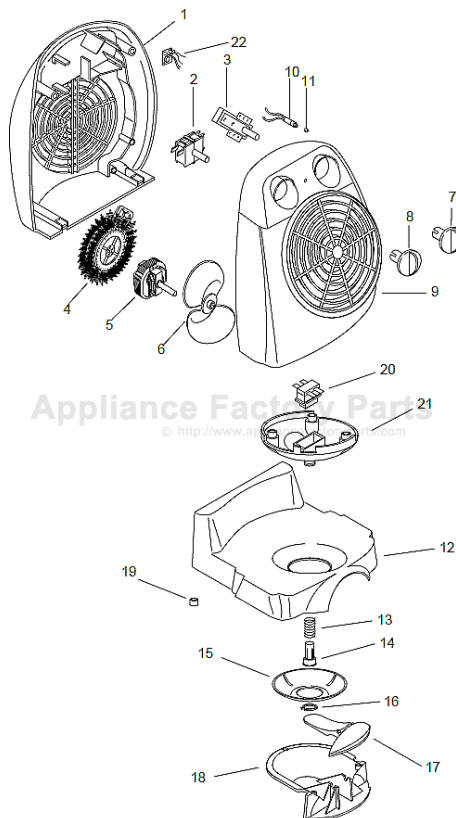


This Owner's Manual is provided and hosted by [Appliance Factory Parts](http://ApplianceFactoryParts.com).



# DE'LONGHI DFH233 Owner's Manual

**[Shop genuine replacement parts for DE'LONGHI DFH233](#)**



**[Find Your DE'LONGHI HVAC Parts - Select From 166 Models](#)**

----- Manual continues below -----

---

**OWNER'S INSTRUCTION  
MODE D'EMPLOI  
INSTRUCCIONES DE USO**



**FAN HEATER  
RADIATEUR SOUFLANT  
TERMOVENTILADOR**

**READ AND SAVE THESE INSTRUCTIONS  
LISEZ ET GARDEZ CES INSTRUCTIONS  
REPASE Y GUARDE ESTAS INSTRUCCIONES**

---



## IMPORTANT SAFEGUARDS

When using electrical appliances, basic precautions should always be followed to reduce risk of fire, electric shock, and injury to persons, including the following:

1. Read all instructions before using the appliance.
2. This appliance is hot when in use. To avoid burns, do not let bare skin touch hot surfaces. Use handle when moving this heater. Keep combustible materials, such as furniture, pillows, bedding, papers, clothes and curtains at least 3 feet (0,9 m) from the front and top of the heater and keep them away from the sides and rear.
3. Extreme caution is necessary when any appliance is used by or near children or invalids and whenever the heater is left operating and unattended.
4. Always unplug appliance when not in use.
5. **Do not operate any appliance with a damaged cord or plug or after the appliance malfunctions, has been dropped or damaged in any manner. Return heater to authorized service facility for examination, electrical or mechanical adjustment, or repair.**
6. Do not use outdoors.
7. This heater is not intended for use in bathrooms, laundry areas and similar indoor locations. Never locate appliance where it may fall into a bathtub or other water container.
8. **Do not run cord under carpeting. Do not cover cord with throw rugs, runners, or the like. Arrange cord away from traffic area and where it will not be tripped over.**
9. To disconnect the appliance, turn controls to off, then remove plug from outlet.
10. Connect to properly polarized outlets only.
11. Do not insert or allow foreign objects to enter any ventilation opening as this may cause an electric shock, fire or damage the appliance.
12. To prevent a possible fire, do not block air intakes or exhaust in any manner. Do not use on soft surfaces, like a bed, where openings may become blocked.
13. **A fan heater has hot or arcing or sparking parts inside. Do not use it in areas where gasoline, paint, or flammable liquids are used or stored.**
14. Use this appliance only as described in this manual. Any other use not recommended by the manufacturer may cause fire, electric shock, or injury to persons.
15. To prevent overload and blown fuses, be sure that no other appliance is plugged into the same outlet (receptacle) or into another outlet (receptacle) wired into the same circuit.
16. It is normal for the heater's plug and cord to feel warm to the touch. A plug or cord which becomes hot to the touch or becomes distorted in shape may be a result of a worn electrical outlet (receptacle). Worn outlets or receptacles should be replaced prior to further use of the heater. Plugging heater into a worn outlet/receptacle/ may result in overheating of the power cord or fire.
17. **Do not use an extension cord because the extension cord may overheat and cause a risk of fire. However, if you have to use an extension cord, the cord shall be no. 14 AWG minimum size and rated not less than 1875 watts, and has to be used only for supplying power to this appliance.**
18. Be sure that the plug is fully inserted into an appropriate receptacle. Please remember that receptacles also deteriorate due to aging and continuous use: check periodically if signs overheating or deformations are evidenced by the plug. Do not use the receptacle and CALL your electrician.
19. Check that neither the appliance nor the power cable have been damaged in any way during transportation.

20. **CAUTION:** to prevent electric shock match wide blade of plug to wide slot, fully insert.  
 21. Do not cover the appliance while it is functioning in order to avoid overheating with the attendant risk of fire.

## SAVE THESE INSTRUCTIONS

Your product is equipped with a polarized alternating current line plug (a plug having one blade wider than the other). This plug will fit into the power outlet only one way. This is a safety feature. If you are unable to insert the plug fully into the outlet, try reversing the plug. If the plug should still fail to fit, contact your electrician to replace your obsolete outlet. Do not defeat the safety purpose of the polarized plug.

### ELECTRIC CONNECTION

The fan heater must be connected to a properly polarized A/C 110/120 V household outlet in perfect working conditions.

Keep loose clothing or bedding, furniture and flammable material away from the wall outlet where the heater plug is fitted in.

### INSTALLATION

The fan heater can easily be positioned on any horizontal support surface in an upright position.

### FAN HEATER CONTROLS

#### **Foot switch**

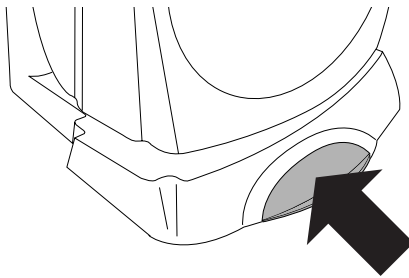
This appliance is supplied with a ON/OFF foot switch.

After having set the thermostat and the functions as here after described, simply press the foot switch to start the appliance.

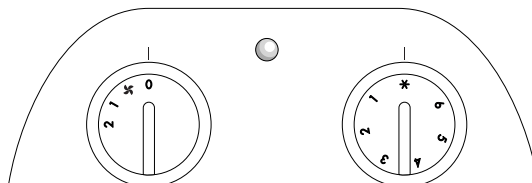
To switch it off, simply press the foot switch again.

#### **IMPORTANT**


**The appliance can only be started when the pedal switch is activated**



#### **Models with function selector and thermostat knob**



### Operation and use

- Press the **ON/OFF** foot switch
- Turn the thermostat knob (right) in a clockwise direction until it reaches the maximum setting.
- **Summer service (ventilation only)**: turn the function selector (left) to .
- **Heating at reduced power**: turn the knob (left) to setting **1**.
- **Heating at full power**: turn the knob (left) to setting **2**.
- To switch it off, simply press the foot switch again.


**It is always advisable to disconnect the plug when the appliance is not in use.**

### Regulating the thermostat

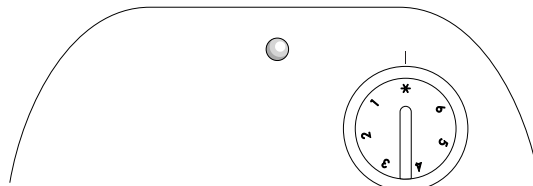
When the room has reached the required temperature turn the right thermostat knob (where included) in an anti-clockwise direction up to the point where the appliance switches off and not beyond. The temperature fixed in this way will be automatically regulated and kept at a constant level by the thermostat.

### Antifreeze function

Press the **ON/OFF** foot switch

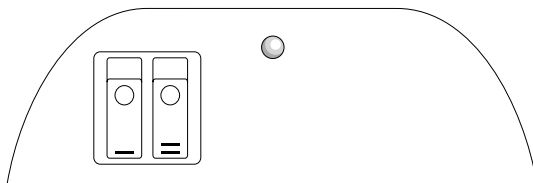
Turn the left knob to setting 2 then turn the right thermostat knob to setting . When it is set in this way the appliance keeps the room at a temperature of approx. 5° C (42°F) with minimal energy expenditure.

### Models with thermostat only



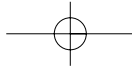
The appliance is switched on by turning the knob in a clockwise direction until it reaches the maximum setting and by pressing the foot switch; to switch the appliance completely off, turn the knob to the minimum setting and press the **ON/OFF** switch.

### Models with switches only



### Operation and use

- Press the **ON/OFF** foot switch
- **Heating at full power**: press both the switches.
- **Heating at reduced power**: press a single switch.
- To switch the appliance completely off, turn both switches off and press the **ON/OFF** foot switch



**FLOW DIRECTION**

The appliance can be adjusted and inclined manually so as to aim the flow of air in the desired direction

**MAINTENANCE AND SERVICE**

Always remove the plug from the power socket and allow the heater to cool. Wipe the heater with a soft damp cloth, do not use detergents and abrasive. Periodically clean the air intake and outlet grilles during the period in which the heater is in use with a vacuum cleaner.

Should the heater not be in use over a certain length of time, store it in a dry place.

This appliance has been built to give many years of trouble free service.

In case of malfunction or doubt, do not try to repair the heater by yourself: it may result in fire hazard or electric shock. Call nearest Service Center (see attached list of Service Centers).

**ATTENTION**

A safety device switches the fan heater off if it accidentally overheats. An audible signal warns of any problems. To reset the unit for normal operation, remove the plug from the mains socket for a few minutes, eliminate the cause of the overheating (e.g. air intake or outlet grilles obstructed) and then plug the fan heater back in again. Contact your nearest Technical Assistance Service if the fan heater does not start operating normally again.



**LIMITED WARRANTY**

**What Does This Warranty Cover?** We warrant each appliance to be free from defects in material and workmanship. Our obligation under this warranty is limited to replacement or repair, free of charge at our factory or authorized service centers, of any defective part or parts thereof other than parts damaged in transit, which shall be returned to us, transportation prepaid. This warranty shall apply only if the appliance is used in accordance with the factory directions which accompany it, and on an Alternating Current (AC) circuit.

**How Long Does The Coverage Last?** This warranty runs for one year from the date of delivery and applies only to the original purchaser for use.

**What Does This Warranty Not Cover?** This warranty does not cover defects or damage of the appliance which result from repairs or alterations to the appliance outside our factory or authorized service centers, nor shall it apply to any appliance which has been subject to abuse, misuse, negligence or accidents. Also, consequential and incidental damages resulting from the use of this product or arising out of any breach of contract or breach of this warranty are not recoverable under this warranty. Some states do not allow the exclusion or limitation of incidental or consequential damages, so the above limitation may not apply to you.

**How Do You Get Service?** If repairs become necessary or spare parts are needed, please write to:

**DE' LONGHI AMERICA INC.**  
Park 80 West Plaza One, 4th floor  
Saddle Brook, NJ 07663  
or call Service Tel. No. 1-800-322-3848  
or visit our internet site [www.delonghiusa.com](http://www.delonghiusa.com)

The above warranty is in lieu of all other express warranties and representations. All implied warranties are limited to the applicable warranty period set forth above. This limitation does apply if you enter into an extended warranty with De' Longhi. Some states do not allow limitations on how long an implied warranty lasts, so the above exclusions may not apply to you. De' Longhi does not authorize any other person or company to assume for it any liability in connection with the sale or use of its appliance.

**How Does State Law Apply?** This warranty gives you specific legal rights, and you may also have other rights which vary from state to state.

